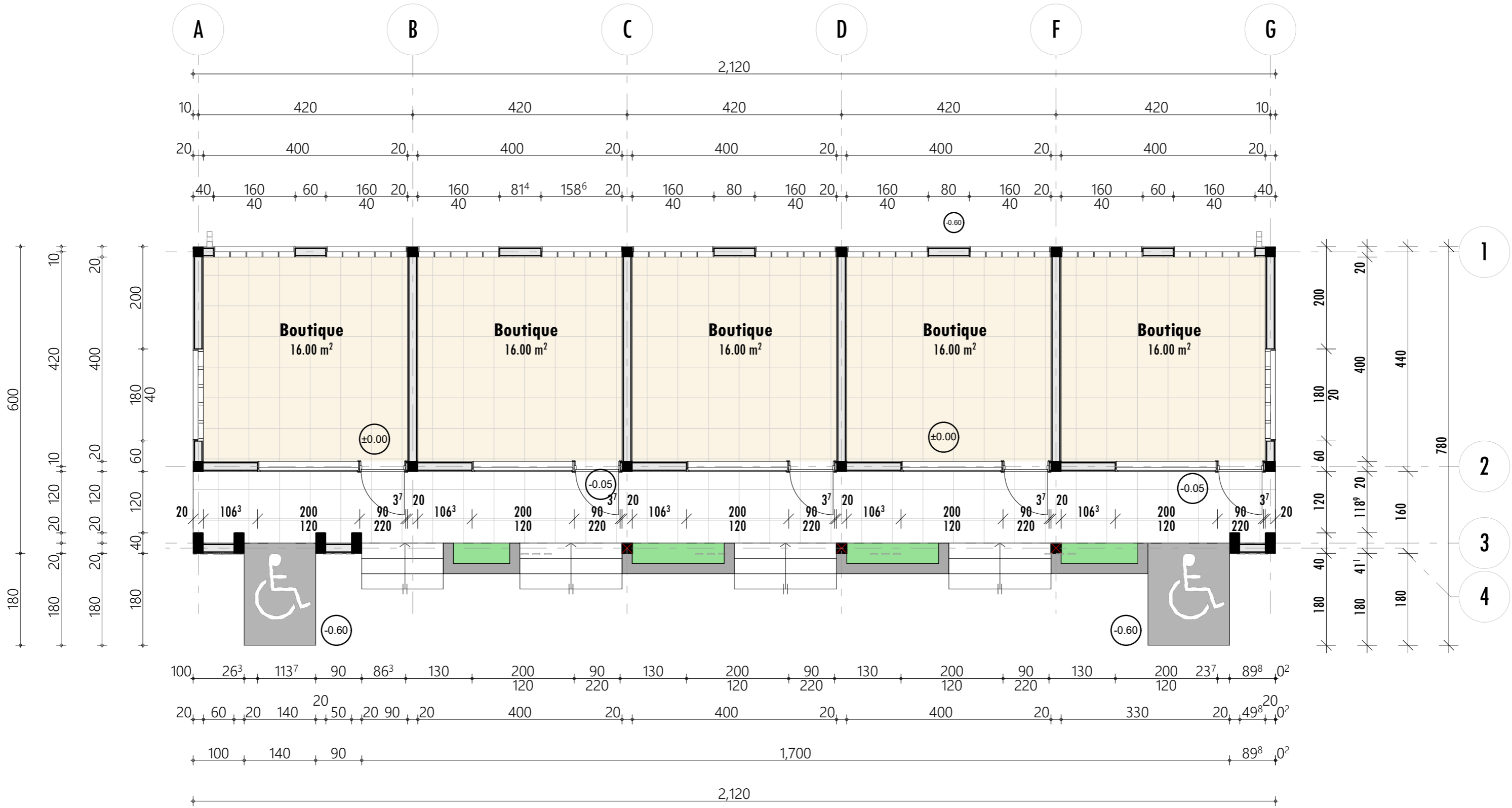
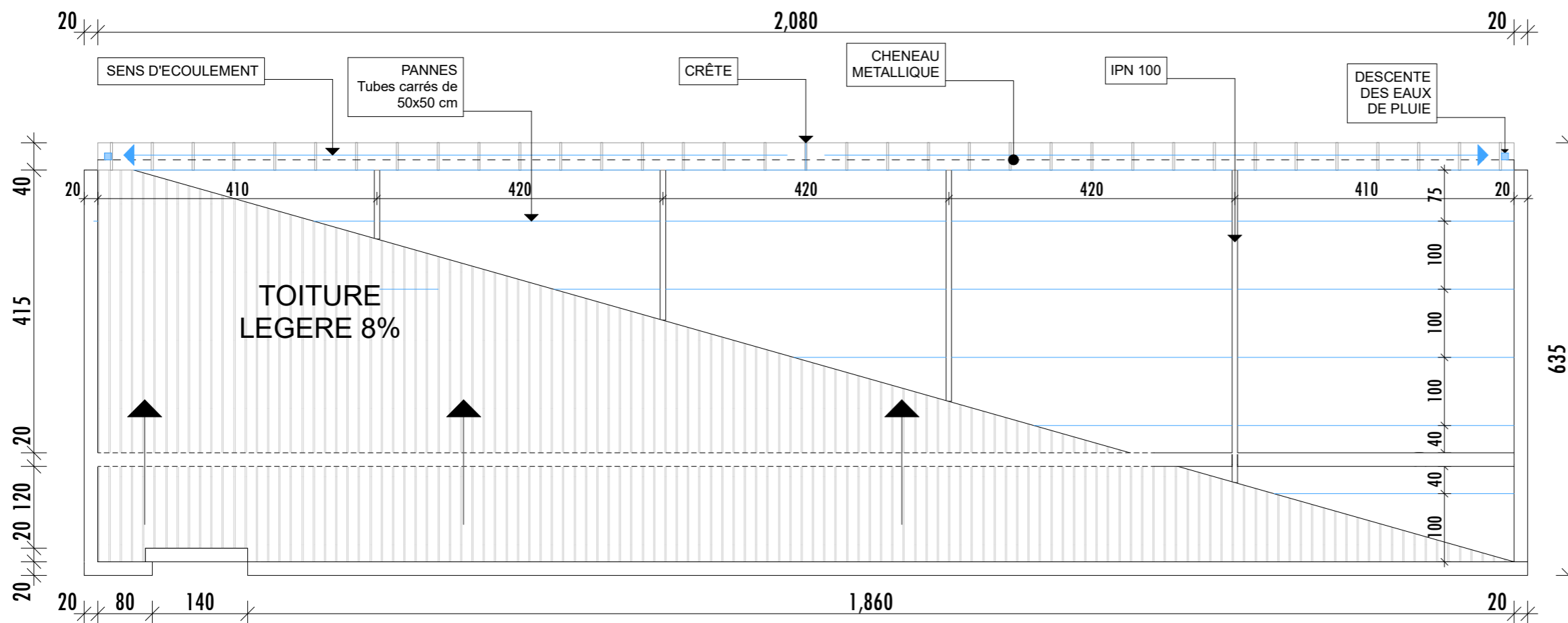


PLANS ARCHITECTURAUX



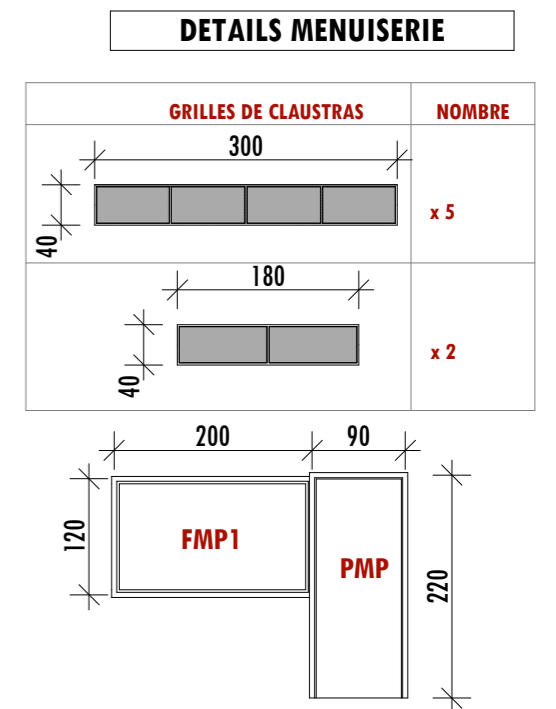
PLAN DE NIVEAU - RDC **1/75**

ETUDES ARCHITECTURALES DE LA CONSTRUCTION DES INFRASTRUCTURES ECONOMIQUES DANS LA REGION DU CENTRE-EST

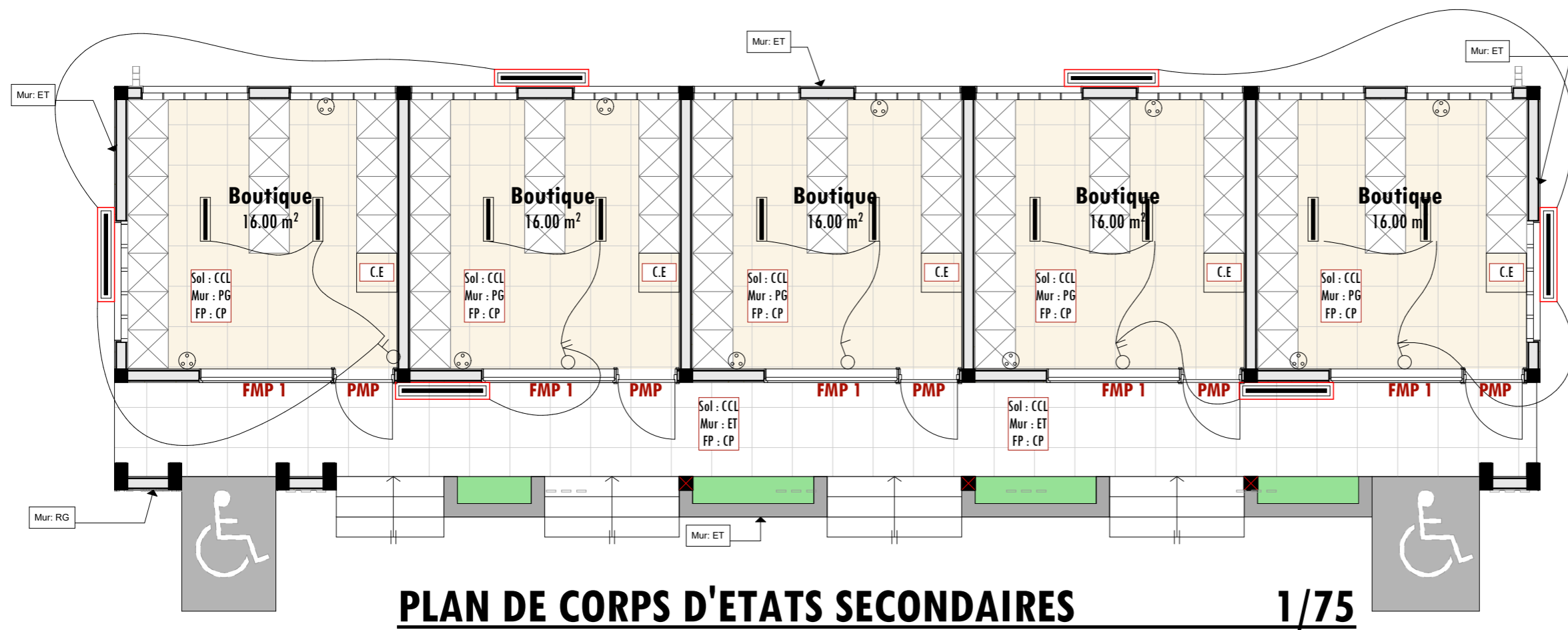


PLAN DE TOITURE 1/75

Menuiserie métallique	
PMP	Porte métallique pleine de 90 x 220
FMP1	Fenêtre métallique pleine ouvrant à l'italienne de 200 x 120 à un seul battant.



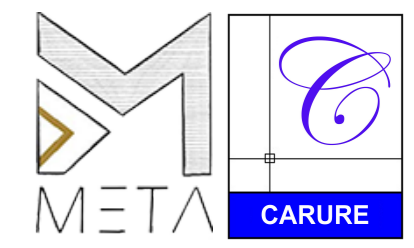
LEGENDE D'ELECTRICITE	
	Interrupteur double allumage mosaïc de chez LEGRAND
	Coffret électrique apparent
	Prise de courant 2P+T type mosaïc de chez LEGRAND
	Tube led étanche de 120
	Tube led de 60



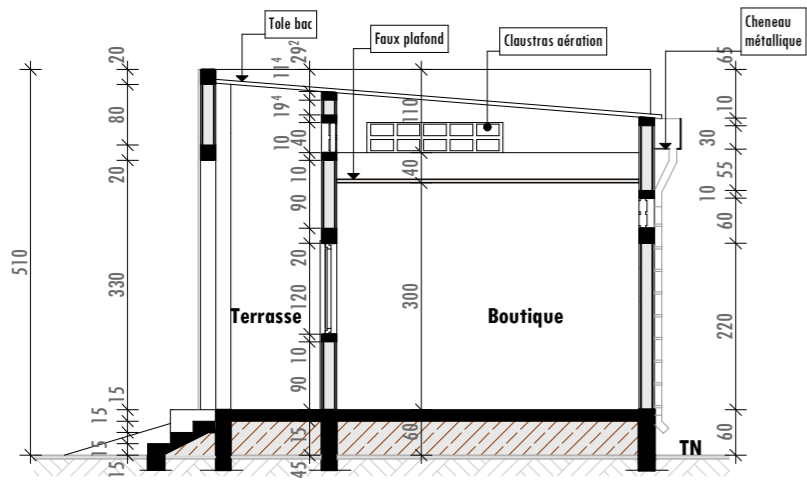
PLAN DE CORPS D'ETATS SECONDAIRES 1/75

LEGENDE REVETEMENTS	
Sol	
CCL	Ciment chappe Lisse
Mur	
PG	Peinture glycérophtalique
ET	Enduit Tyrolien
RG	Revêtement en granite
Faux plafond	
CP	contreplaqué de 6mm

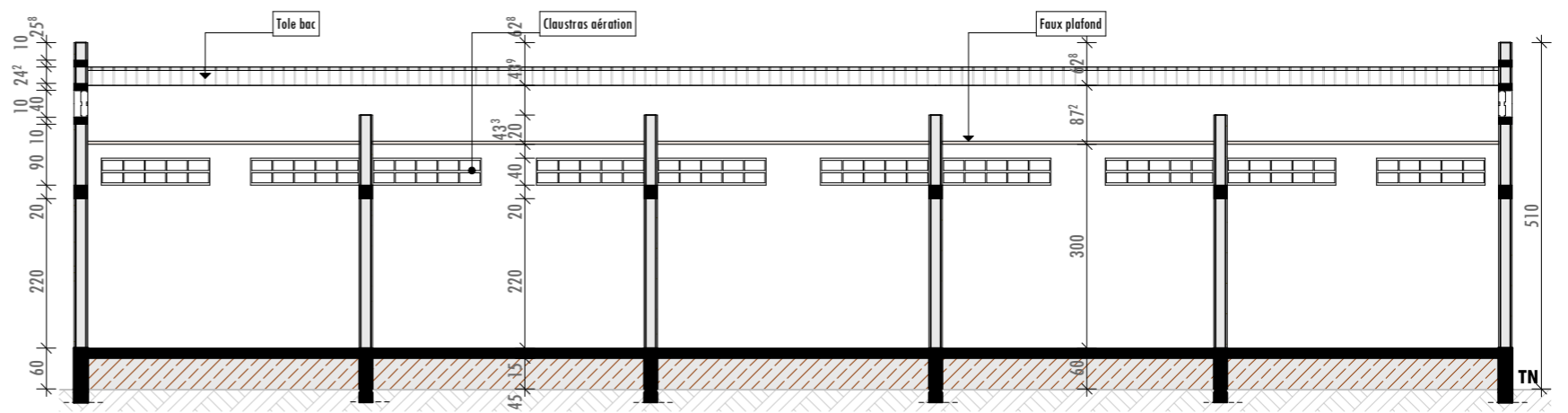
PLAN TYPE - BOUTIQUES



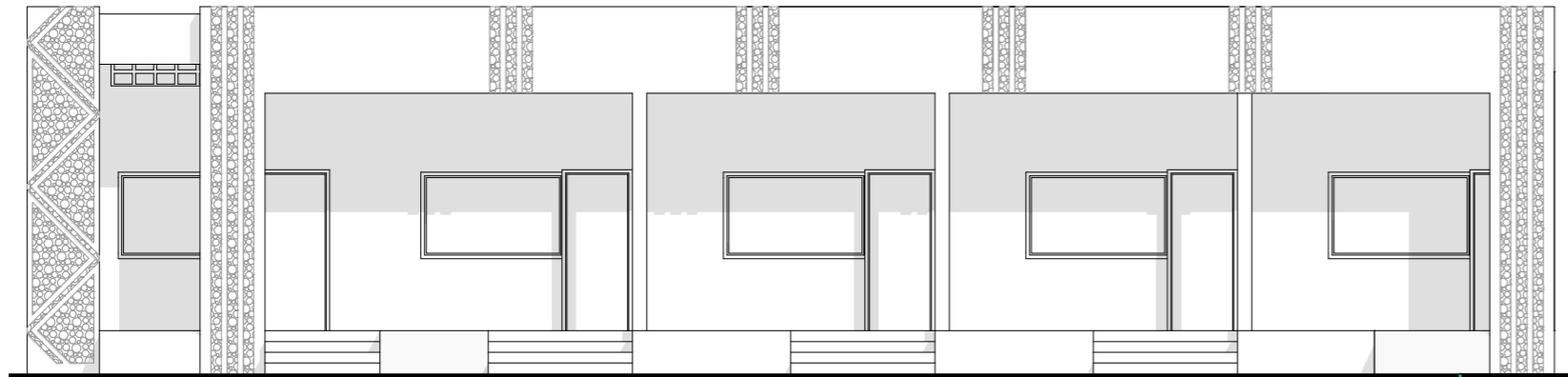
ETUDES ARCHITECTURALES DE LA CONSTRUCTIONS DES INFRASTRUCTURES ECONOMIQUES DANS LA REGION DU CENTRE-EST



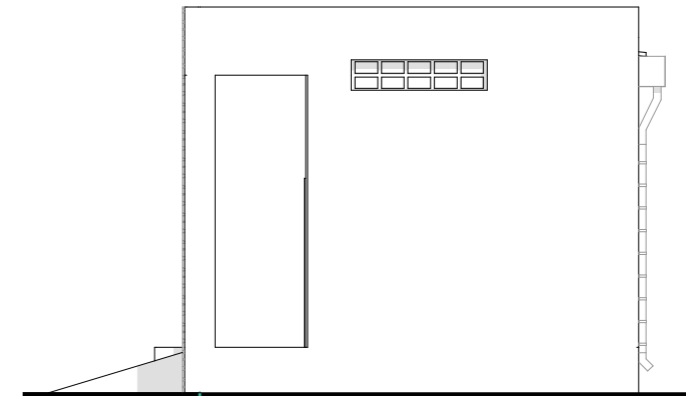
COUPE TRANSVERSALE AA 1/100



COUPE LONGITUDINALE BB 1/100



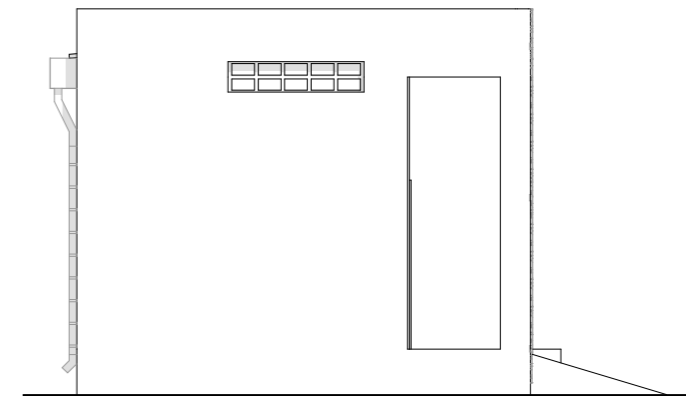
FACADE PRINCIPALE 1/100



FACADE LATERALE DROITE 1/100



FACADE ARRIERE 1/100



FACADE LATERALE GAUCHE 1/100

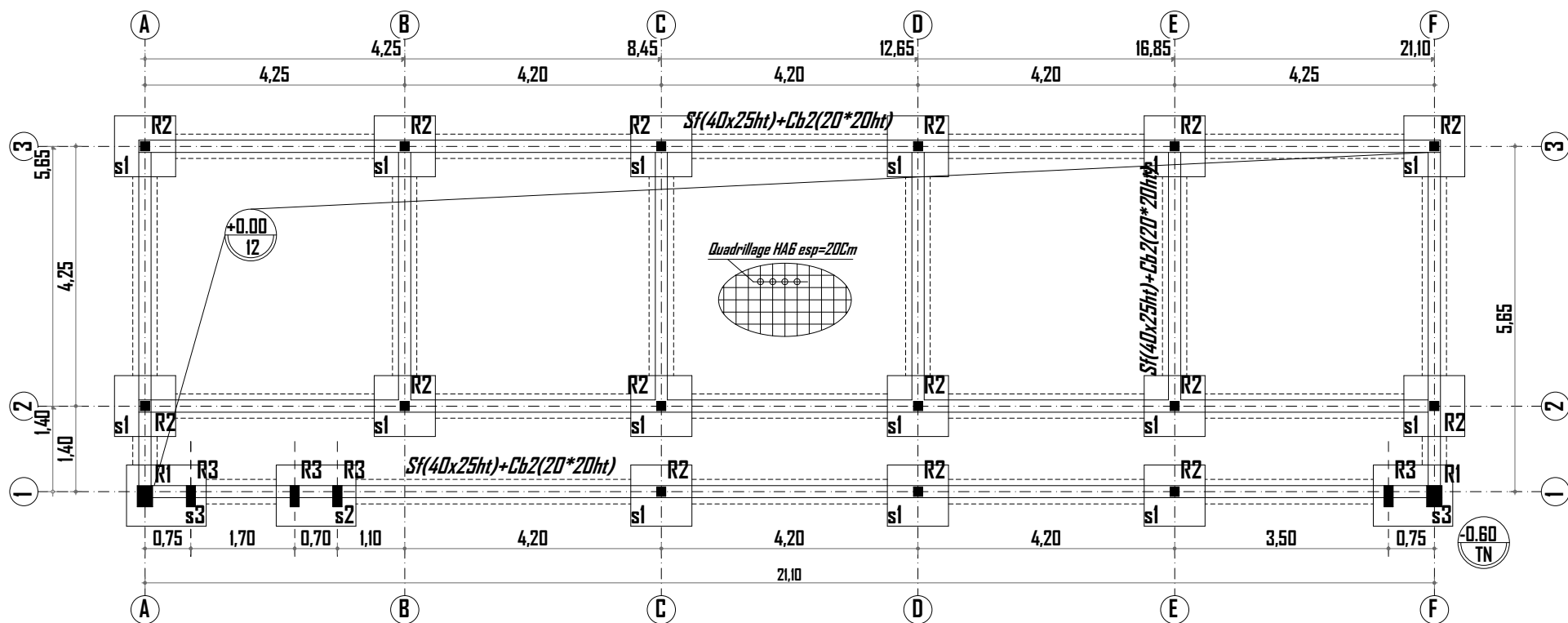
ETUDES ARCHITECTURALES DE LA CONSTRUCTIONS DES INFRASTRUCTURES ECONOMIQUES DANS LA REGION DU CENTRE-EST



PLAN TYPE - BOUTIQUES

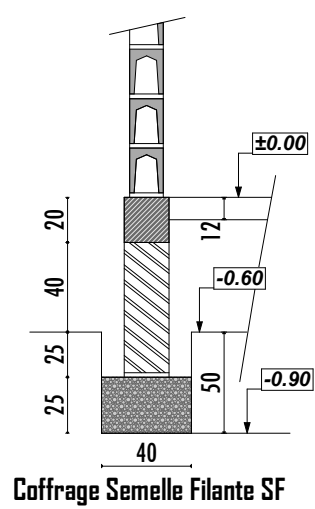
INGENIERIE

FONDATION

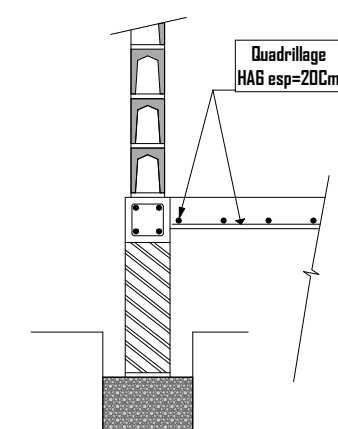


Nomenclature des raidisseurs		
Codes	Sections	Quantités
R1	35x25	04
R2	15x15	15
R3	35x15	04

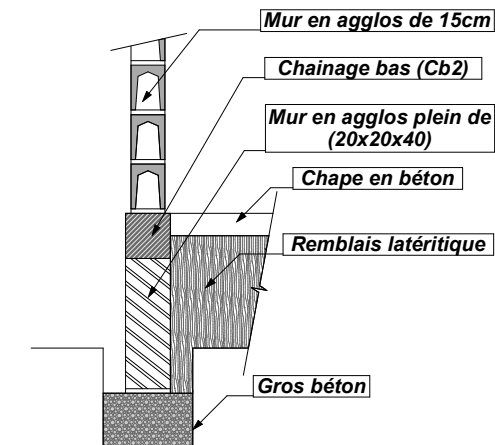
Nomenclature des Semelles Isolées		
Codes	Sections	Quantités
S1	100x100x30	15
S2	100x130x30	01
S3	100x130x30	02



Coffrage Semelle Filante SF



Ferrailage Semelle Filante SF



Nomenclature Semelle Filante SF

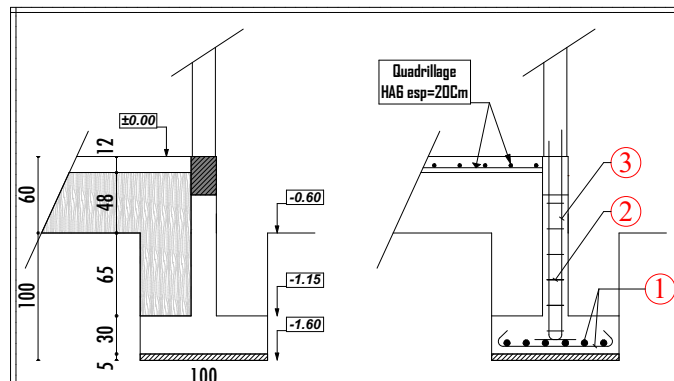
ING. ETUDE:
SAMPEBGO Sidiki
 Tél:
 (+226) 72 33 03 50/ 74 69 96 16

Maitre d'ouvrage:
ENABEL

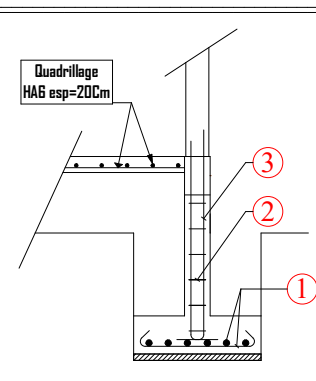
Titre:
**PROJET DE CONSTRUCTIONS DES
 INFRASTRUCTURES ECONOMIQUES
 DANS LA REGION DU SUD-EST**

Titre infrastructure:
BOUTIQUES

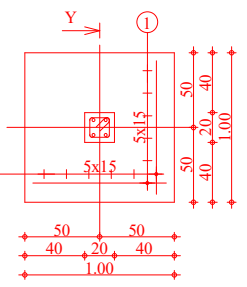
Plan de fondation



Coffrage Semelle Isolée SI

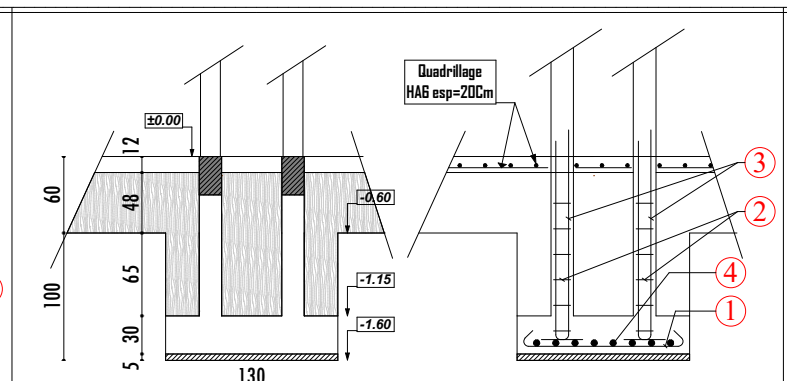


Ferrailage Semelle Isolée SI

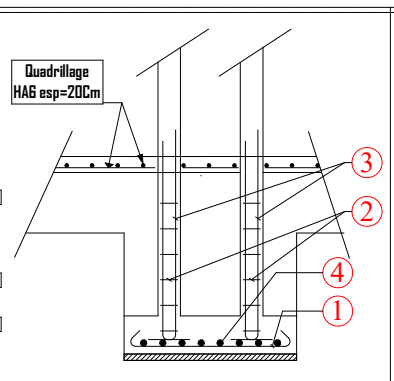


Vue en Plan Semelle Isolée SI

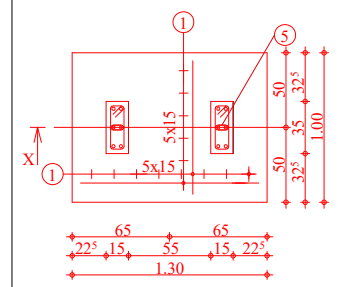
Pos.	Armature	Code	Forme
①	12HA 8	l=1.16	00 ↘ 90 ↘
②	8HA 6	l=72	31 ↘ ↘
③	4HA 10	l=1.63	00 ↘ 1.44 ↘



Coffrage Semelle Isolée S2

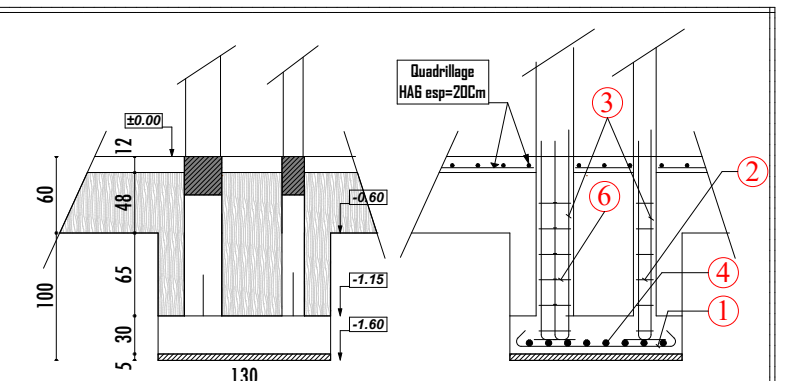


Ferrailage Semelle Isolée S2

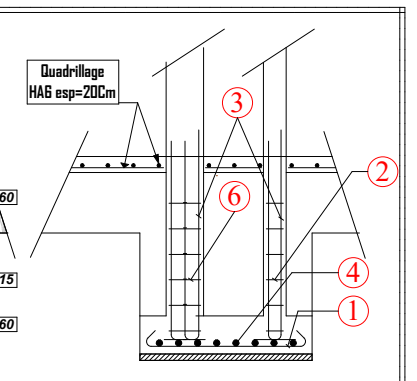


Vue en Plan Semelle Isolée S2

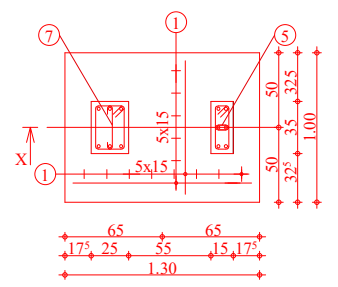
Pos.	Armature	Code	Forme
①	6HA 8	l=1.16	00 ↘ 90 ↘
②	8HA 6	l=88	31 ↘ ↘
③	12HA 10	l=1.63	00 ↘ 1.44 ↘
④	8HA 8	l=1.46	00 ↘ 120 ↘
⑤	8HA 6	l=21	31 ↘ ↘



Coffrage Semelle Isolée S3

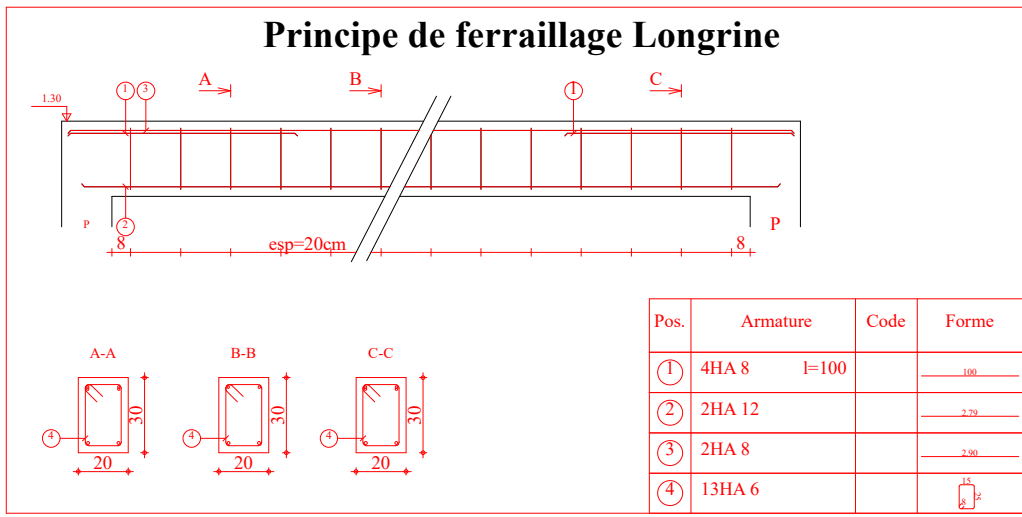


Ferrailage Semelle Isolée S3



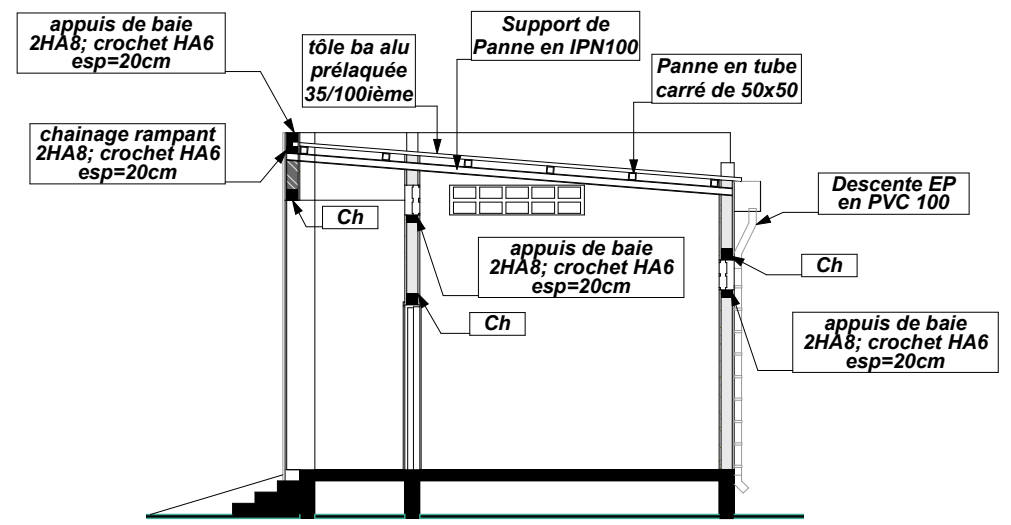
Vue en Plan Semelle Isolée S3

Pos.	Armature	Code	Forme
①	6HA 8	l=1.16	00 ↘ 90 ↘
②	8HA 6	l=72	31 ↘ ↘
③	12HA 10	l=1.63	00 ↘ 1.44 ↘
④	8HA 8	l=1.46	00 ↘ 120 ↘
⑤	8HA 6	l=21	31 ↘ ↘
⑥	8HA 6	l=108	31 ↘ ↘
⑦	8HA 6	l=72	41 ↘ ↘



Principe de ferrailage Longrine

Pos.	Armature	Code	Forme
①	4HA 8	l=100	— 100
②	2HA 12		— 275
③	2HA 8		— 290
④	13HA 6		— 8.2



ING. ETUDE:
SAMPEBGO Sidiki
 Tél:
 (+226) 72 33 03 50/ 74 69 96 16

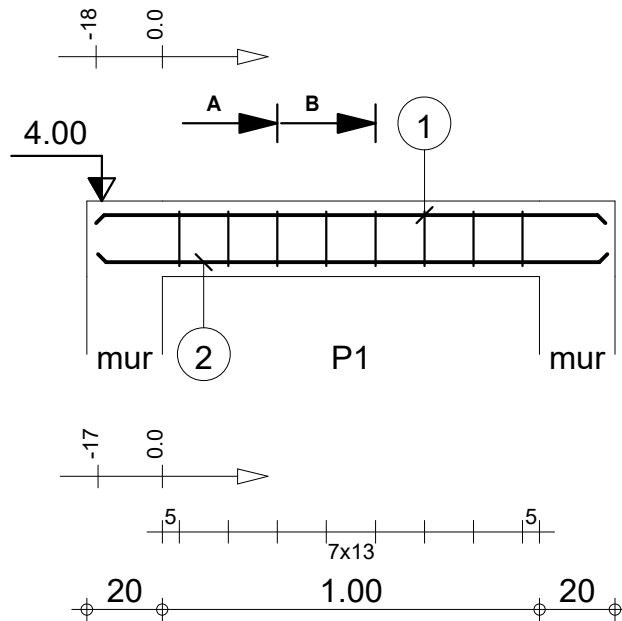
Maitre d'ouvrage:
ENABEL

Titre:
**PROJET DE CONSTRUCTIONS DES
 INFRASTRUCTURES ECONOMIQUES
 DANS LA REGION DU SUD-EST**

Titre infrastructure:
BOUTIQUES

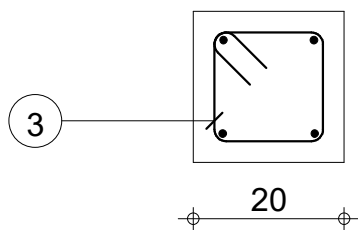
Plan de fondation et Détail

CHAINAGES

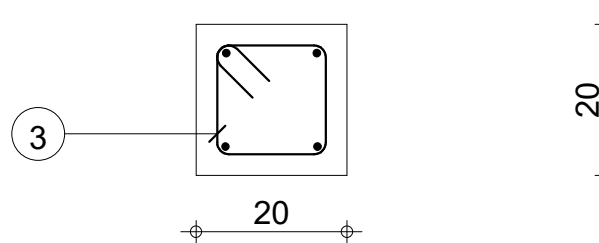


Pos.	Armature	Code	Forme
①	2HA 8 l=1.35	00	1.35
②	2HA 10 l=1.35	00	1.35
③	8HA 6 l=72	31	

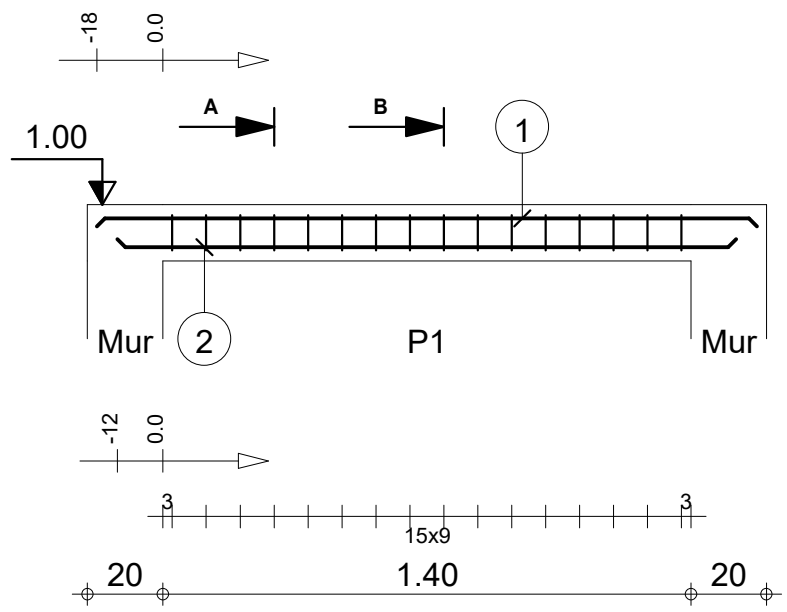
A-A



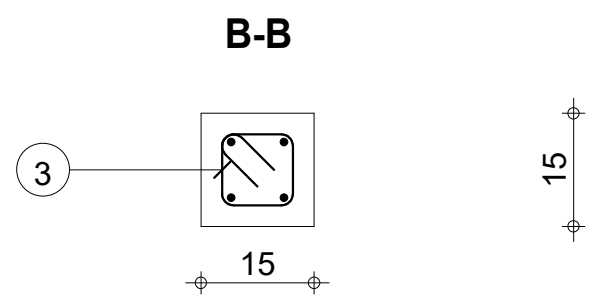
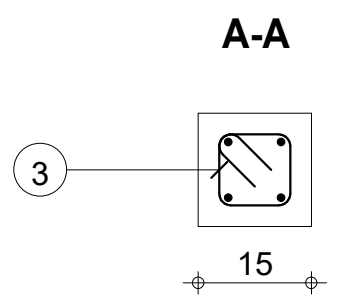
B-B



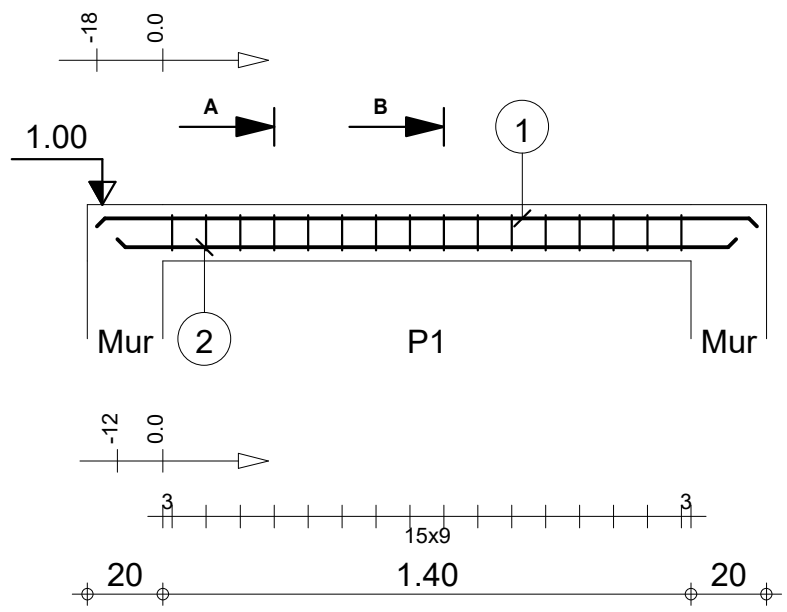
Tenu au feu 1/2h		Fissuration peu préjudiciable		Tél.	Fax	Béton : BETON25 = 0.056 m ³	Acier HA 500 = 2.73 kg	
BOUTIQUES (Chainage bas)		Cb : P1		Reprise de bétonnage : Non		Surface du coffrage = 0.84 m ²	Acier HA 500 = 1.28 kg	
ENABEL		Section 20x20		Nombre 1		Enrobage inférieur 2.5 cm	Enrobage supérieur 2.5 cm	
						Densité = 71.61 kg/ m ³	Echelle pour la vue 1/20	
						Diamètre moyen = 7.45mm	Echelle pour la section 1/10	
							Page 1/1	



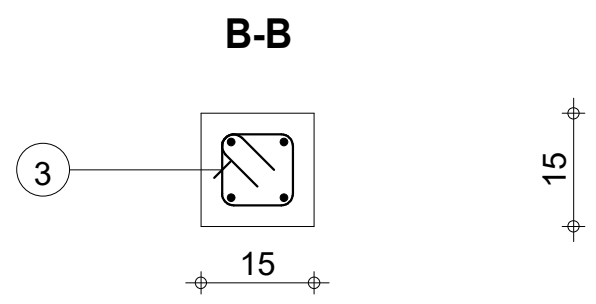
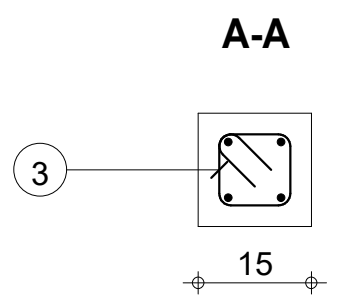
Pos.	Armature	Code	Forme
①	2HA 8 l=1.75	00	1.75
②	2HA 8 l=1.64	00	1.64
③	16HA 6 l=52	31	



Tenu au feu 1/2h		Fissuration peu préjudiciable		Reprise de bétonnage : Non		Acier HA 500 = 2.68 kg	
BOUTIQUES (Chainage Haut)		Ch : P1		Nombre 1		Béton : BETON25 = 0.0405 m ³ Acier HA 500 = 1.84 kg	
ENABEL		Section 15x15		Surface du coffrage = 0.795 m ²		Enrobage inférieur 2.5 cm Enrobage supérieur 2.5 cm	
				Densité = 111.6 kg/ m ³ Diamètre moyen = 6.9mm		Enrobage latéral 2.5 cm	
				Echelle pour la vue 1/20		Echelle pour la section 1/10	
						Page 1/2	

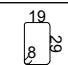
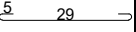


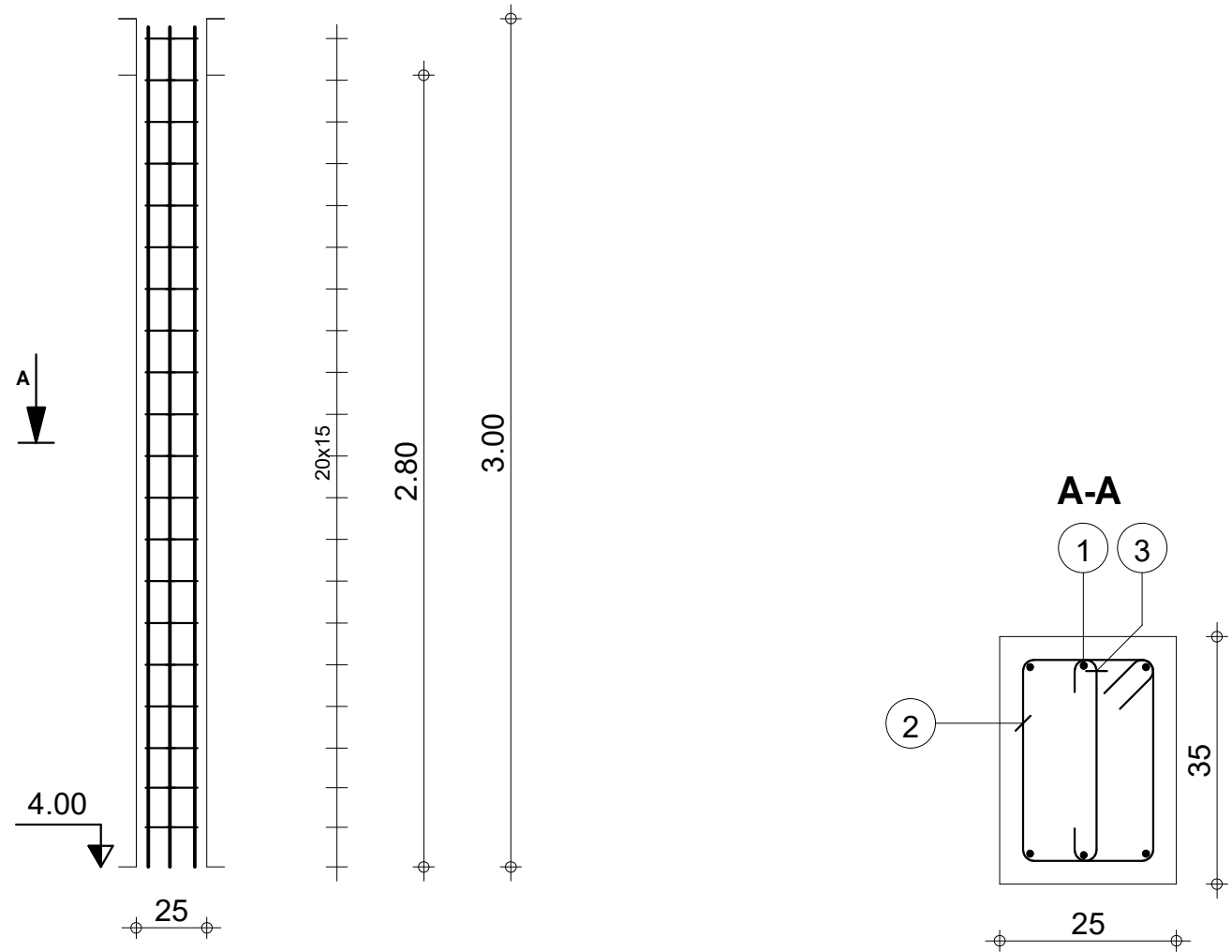
Pos.	Armature	Code	Forme
①	2HA 8 l=1.75	00	1.75
②	2HA 8 l=1.64	00	1.64
③	16HA 6 l=52	31	



	BOUTIQUES (Chainage Haut) ENABEL	Chainage de couronnement : P1 Section 15x15	Tél. Fax		Béton : BETON25 = 0.0405 m ³ Acier HA 500 = 1.84 kg	
			Tenue au feu 1/2h Fissuration peu préjudiciable Reprise de bétonnage : Non	Surface du coffrage = 0.795 m ²	Acier HA 500 = 2.68 kg Enrobage inférieur 2.5 cm Enrobage supérieur 2.5 cm Enrobage latéral 2.5 cm	Densité = 111.6 kg/ m ³ Diamètre moyen = 6.9mm

RAIDISSEURS

Pos.	Armature	Code	Forme
①	6HA 10 l=2.97	00	2.97
②	20HA 6 l=1.08	31	
③	20HA 6 l=41	00	



Tél. Fax

Acier HA 400 = 11 kg Béton : BETON20 = 0.245 m3
 Acier HA 400 = 6.61 kg Surface du coffrage = 3.36 m2
 Enrobage 3 cm

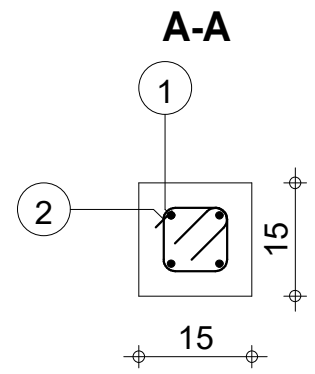
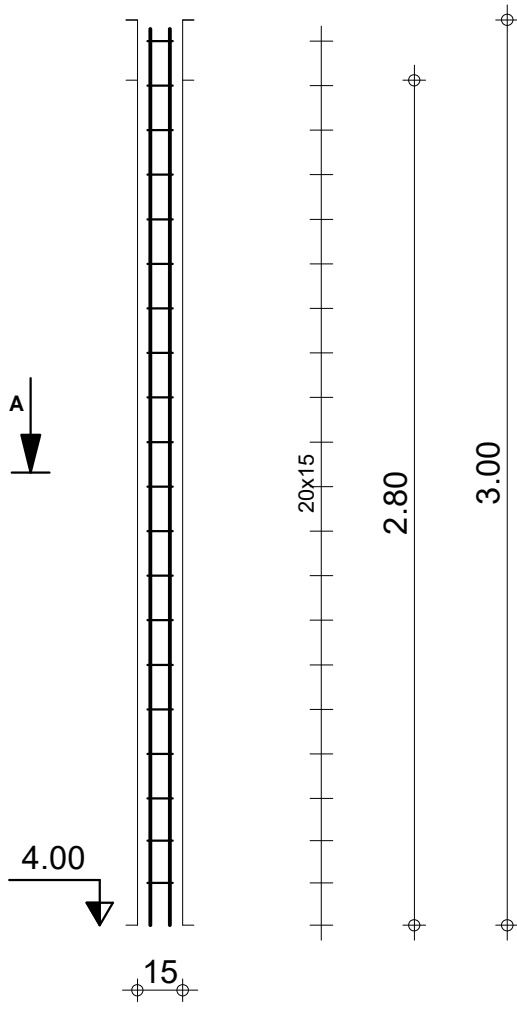


BOUTIQUES (Raidisseurs)
ENABEL
 PRO

R1
Section 25x35

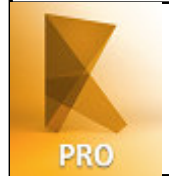
Echelle pour la vue 1/25
 Echelle pour la section 1/10

Pos.	Armature	Code	Forme
①	4HA 10 l=2.97	00	2.97
②	20HA 6 l=48	31	



Tél. Fax

Acier HA 400 = 7.32 kg Béton : BETON20 = 0.063 m3
 Acier HA 400 = 2.12 kg Surface du coffrage = 1.68 m2
 Enrobage 3 cm

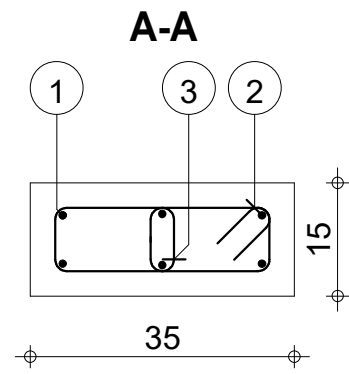
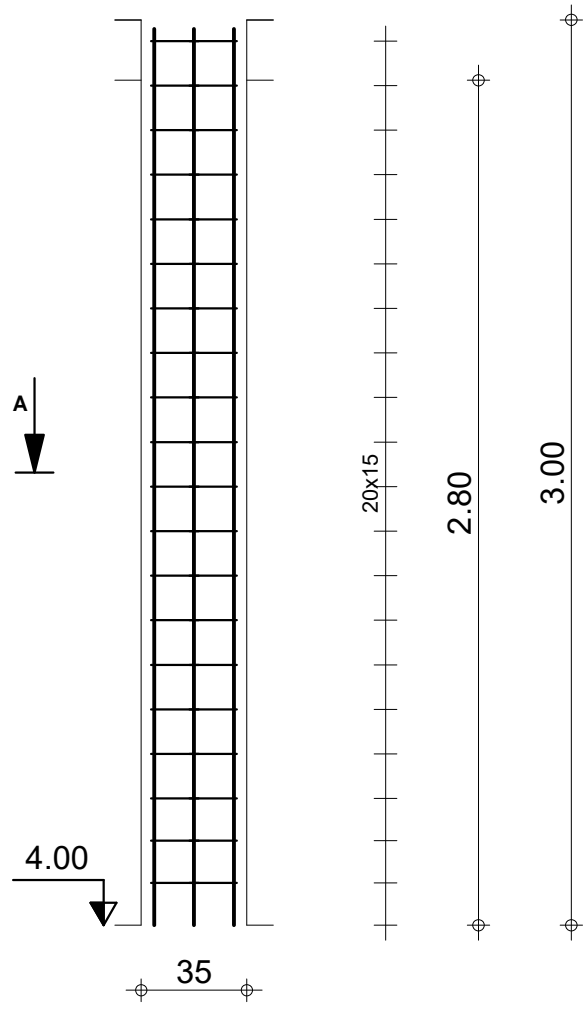


RDC
ENABEL

R2
Section 15x15

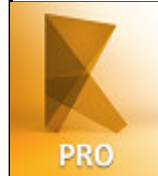
Echelle pour la vue 1/25
 Echelle pour la section 1/10

Pos.	Armature	Code	Forme
①	6HA 10 l=2.97	00	
②	20HA 6 l=88	31	
③	20HA 6 l=21	00	



Tél. Fax

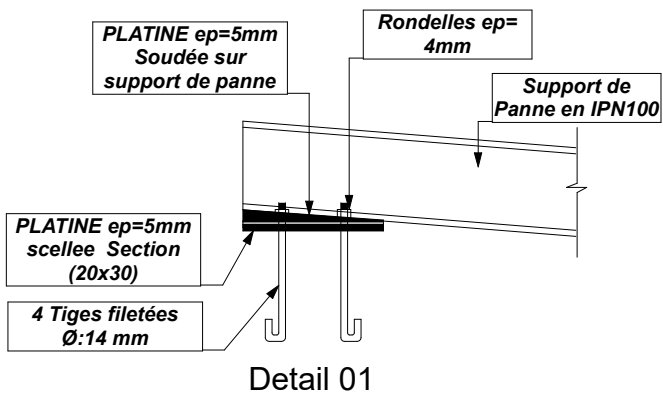
Acier HA 400 = 11 kg Béton : BETON20 = 0.147 m3
 Acier HA 400 = 4.83 kg Surface du coffrage = 2.8 m2
 Enrobage 3 cm



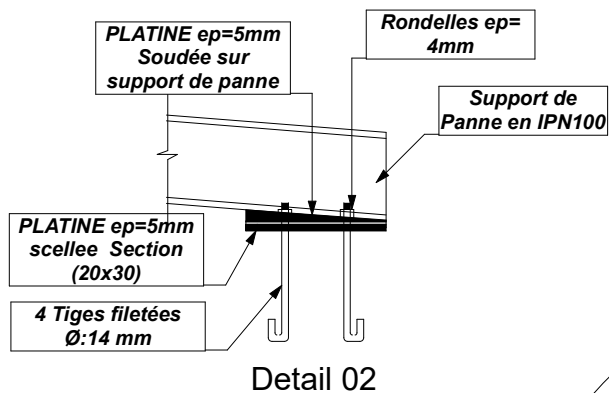
RDC
ENABEL

R3
Section 35x15

Echelle pour la vue 1/25
 Echelle pour la section 1/10

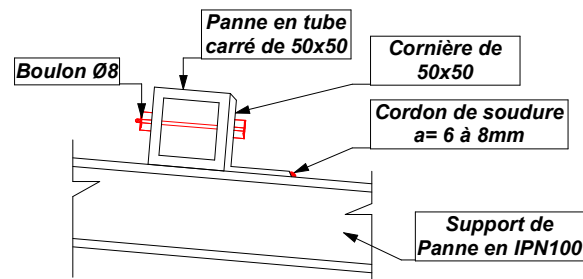
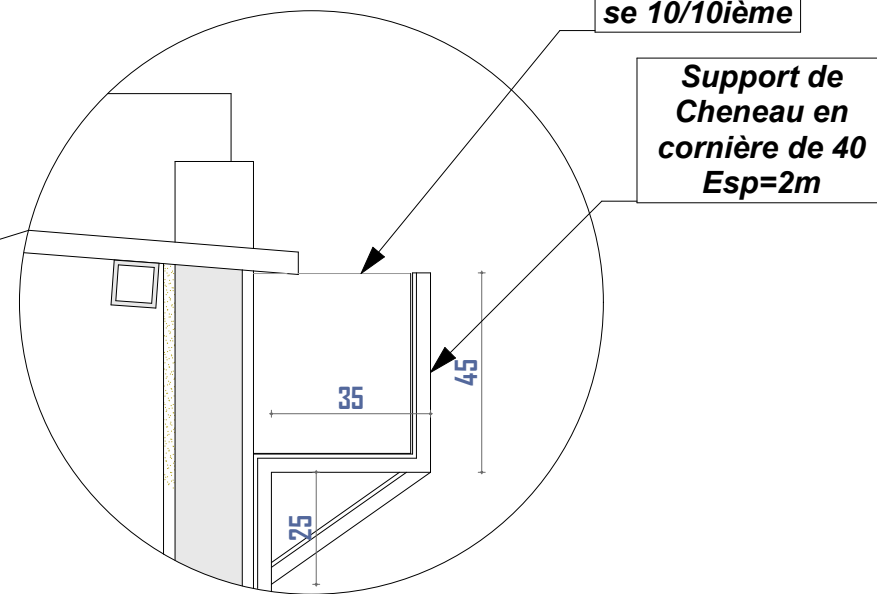
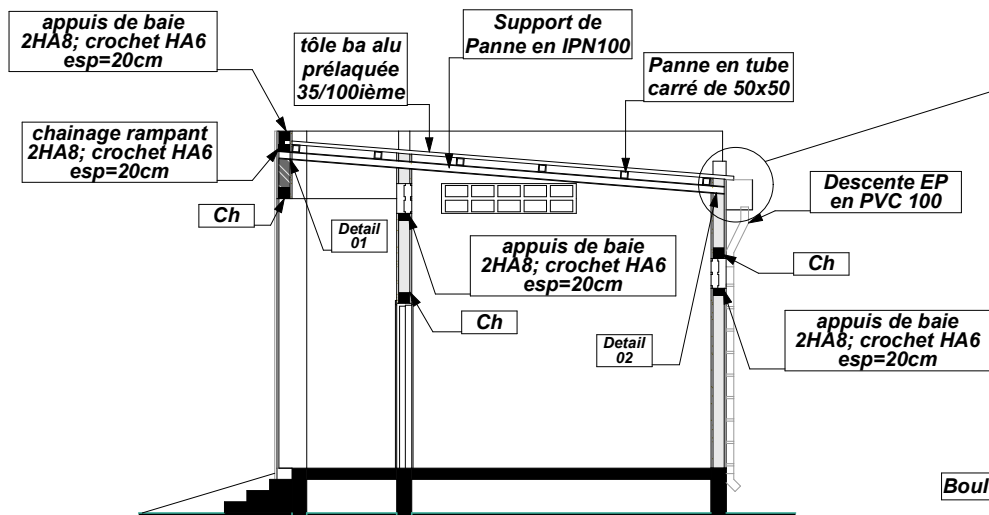


Detail 01



Detail 02

Jonction support de panne-raideuseur en BA



Jonction panne-support de panne

ING. ETUDE:
SAMPEBGO Sidiki
 Tél:
 (+226) 72 33 03 50/ 74 69 96 16

Maitre d'ouvrage:
ENABEL

Titre:
**PROJET DE CONSTRUCTIONS DES
 INFRASTRUCTURES ECONOMIQUES
 DANS LA REGION DU SUD-EST**

Titre infrastructure:
BOUTIQUES

Détails de toiture