

EARLY CHILDHOOD DEVELOPMENT CENTRE AT NAKAPIRIPIRIT TECHNICAL INSTITUTE



Belgian development agency
Infrastructure unit- TTE Project
Legacy Towers, Wing A - 5th Floor
Kyadondo Road, Nakasero
PO BOX 40131
KAMPALA UGANDA

PROJECT:

EARLY CHILDHOOD DEVELOPMENT
CENTRE AT NAKAPIRIPIRIT
TECHNICAL INSTITUTE

NOTES:

DRAWINGS

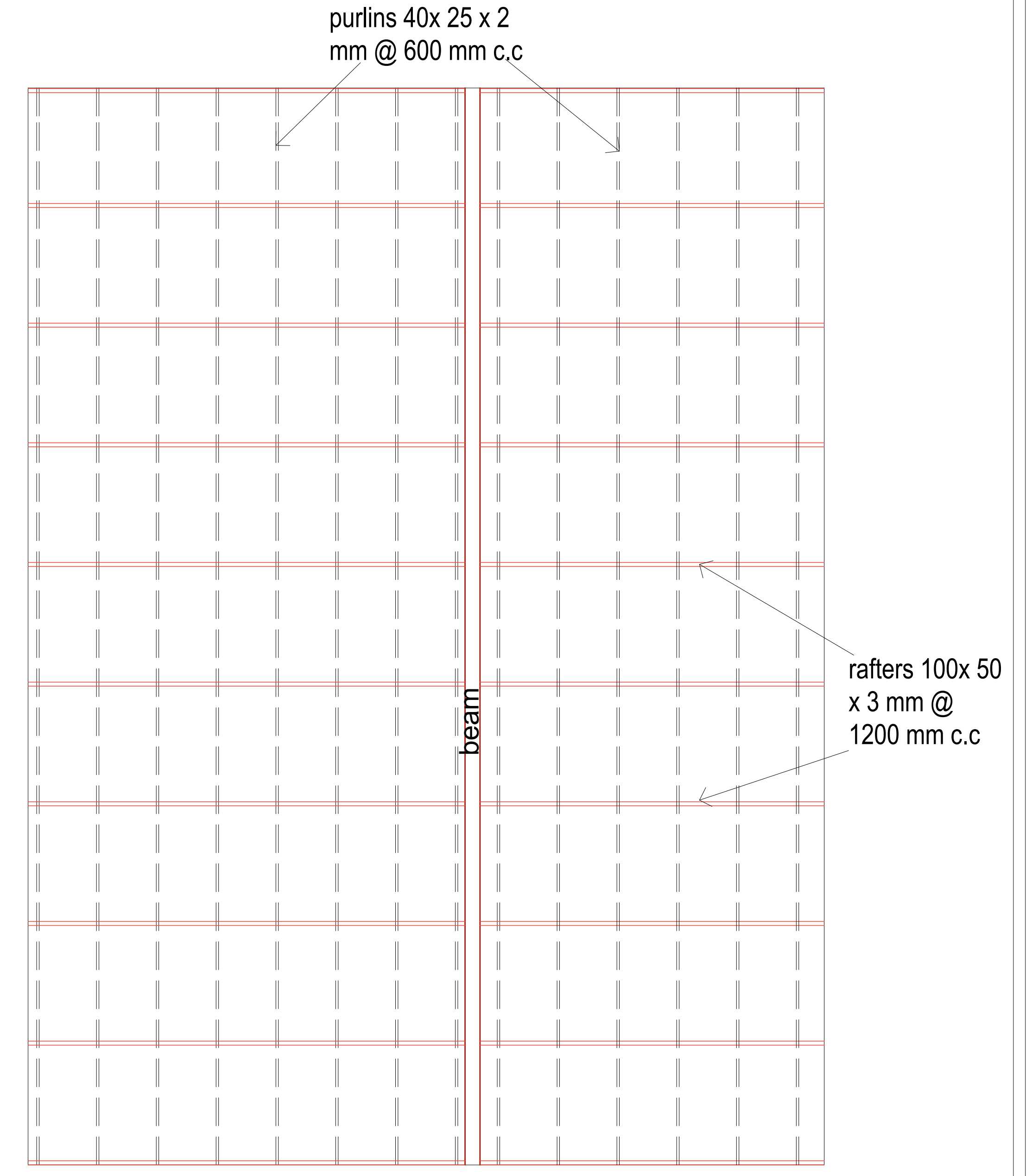
Scale: 1:100

Drawn by: Infra unit

Date: SEPTEMBER, 2022

DRG No:

Sheet No: 01



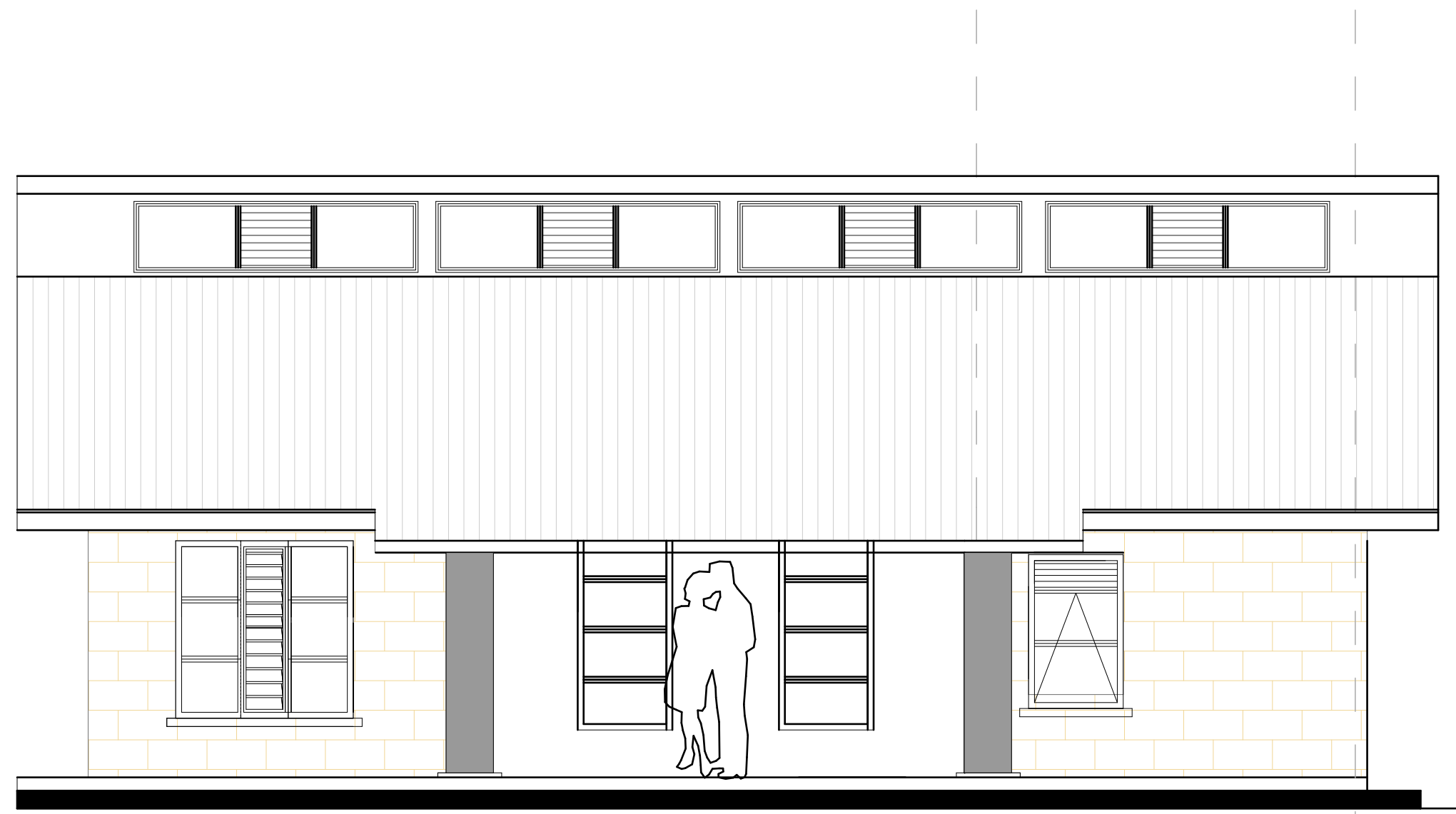
Belgian development agency
Infrastructure unit- TTE Project
 Legacy Towers, Wing A - 5th Floor
 Kyadondo Road, Nakasero
 PO BOX 40131
 KAMPALA UGANDA

PROJECT:
 EARLY CHILDHOOD DEVELOPMENT
 CENTRE AT NAKAPIRIPIT
 TECHNICAL INSTITUTE

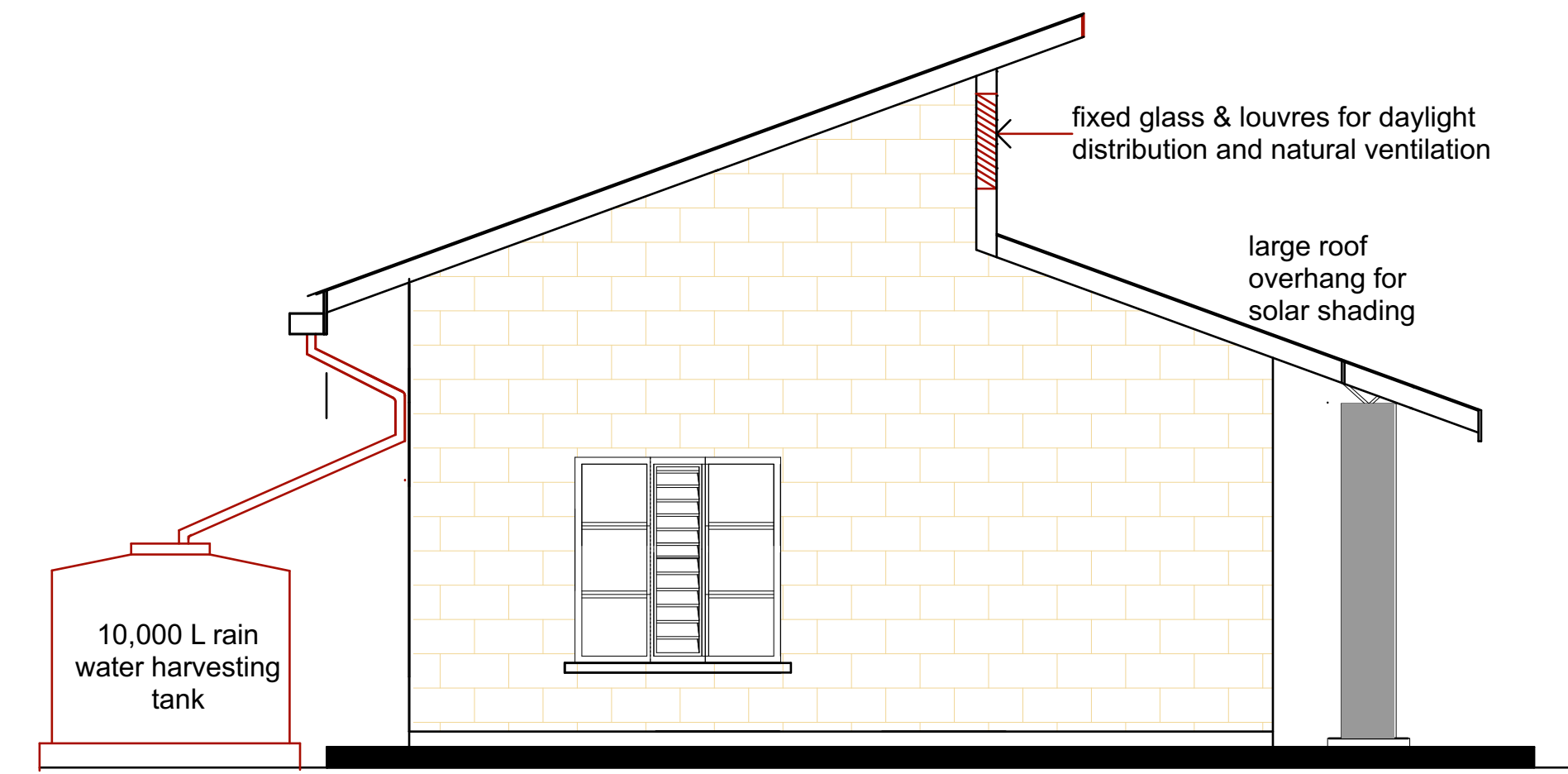
NOTES:
 FLOOR & ROOF PLAN

Scale: 1:100
 Drawn by: Infra unit
 Date: SEPTEMBER, 2022

DRG No:
 Sheet No: 02



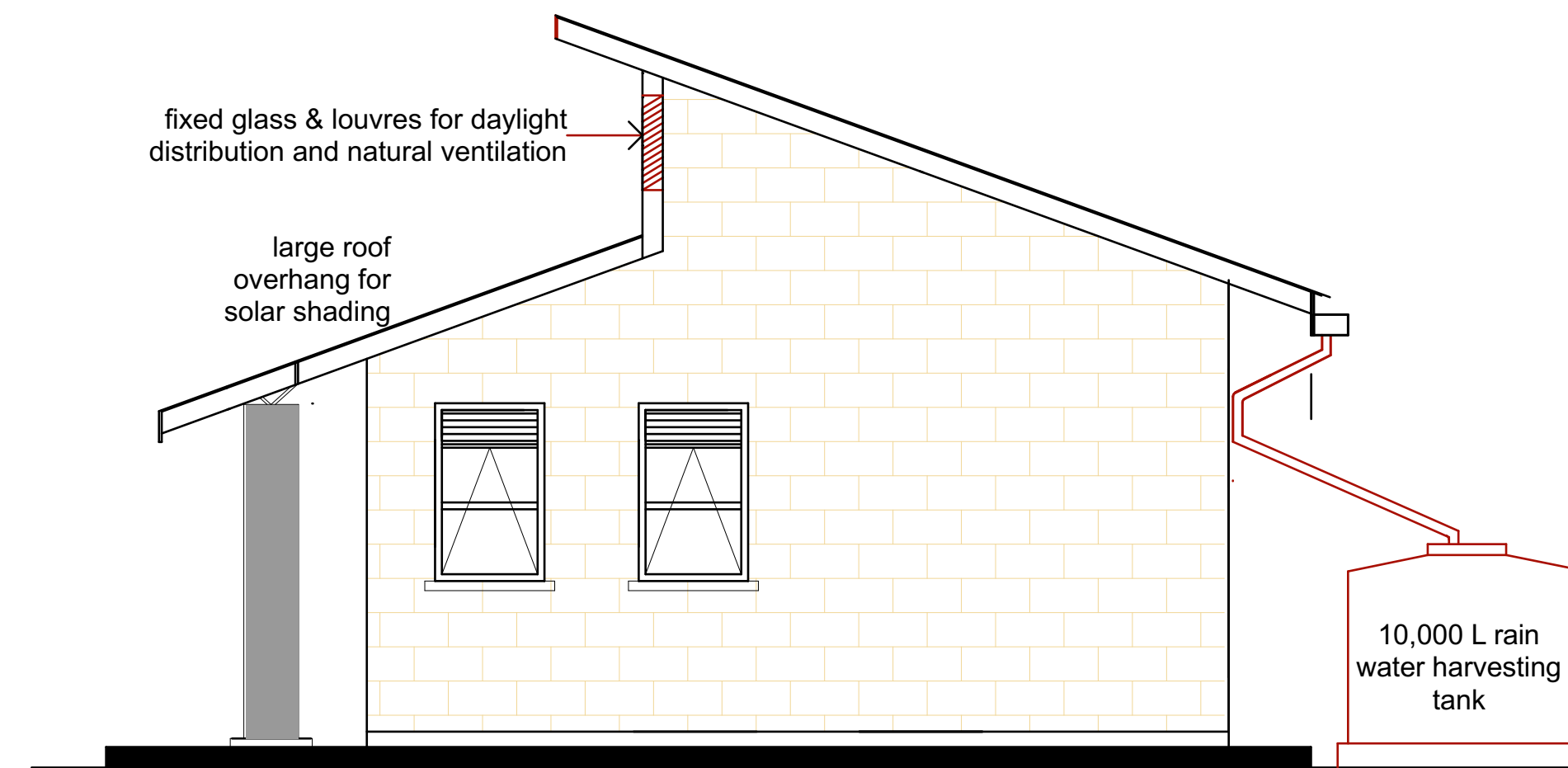
ELEVATION 01
SCALE 1:100



ELEVATION 02
SCALE 1:100



ELEVATION 03
SCALE 1:100



ELEVATION 04
SCALE 1:100



Belgian development agency
Infrastructure unit- TTE Project
Legacy Towers, Wing A - 5th Floor
Kyadondo Road, Nakasero
PO BOX 40131
KAMPALA UGANDA

PROJECT:
EARLY CHILDHOOD
DEVELOPMENT CENTRE AT
NAKAPIRIPIT TECHNICAL
INSTITUTE

NOTES:
ELEVATIONS

Scale: 1:100

Drawn by: Infra unit

Date: SEPTEMBER, 2022

DRG No:

Sheet No: 04

FINISHES SCHEDULE [SSP]

1.0 FLOOR:

- 1.1. Power floated Concrete with hardener
- 1.2. Tamped concrete with grooves
- 1.3. 80mm thick precast pavers
- 1.4. 15mm Thick non-slip ceramic tiles

2.0 SKIRTING:

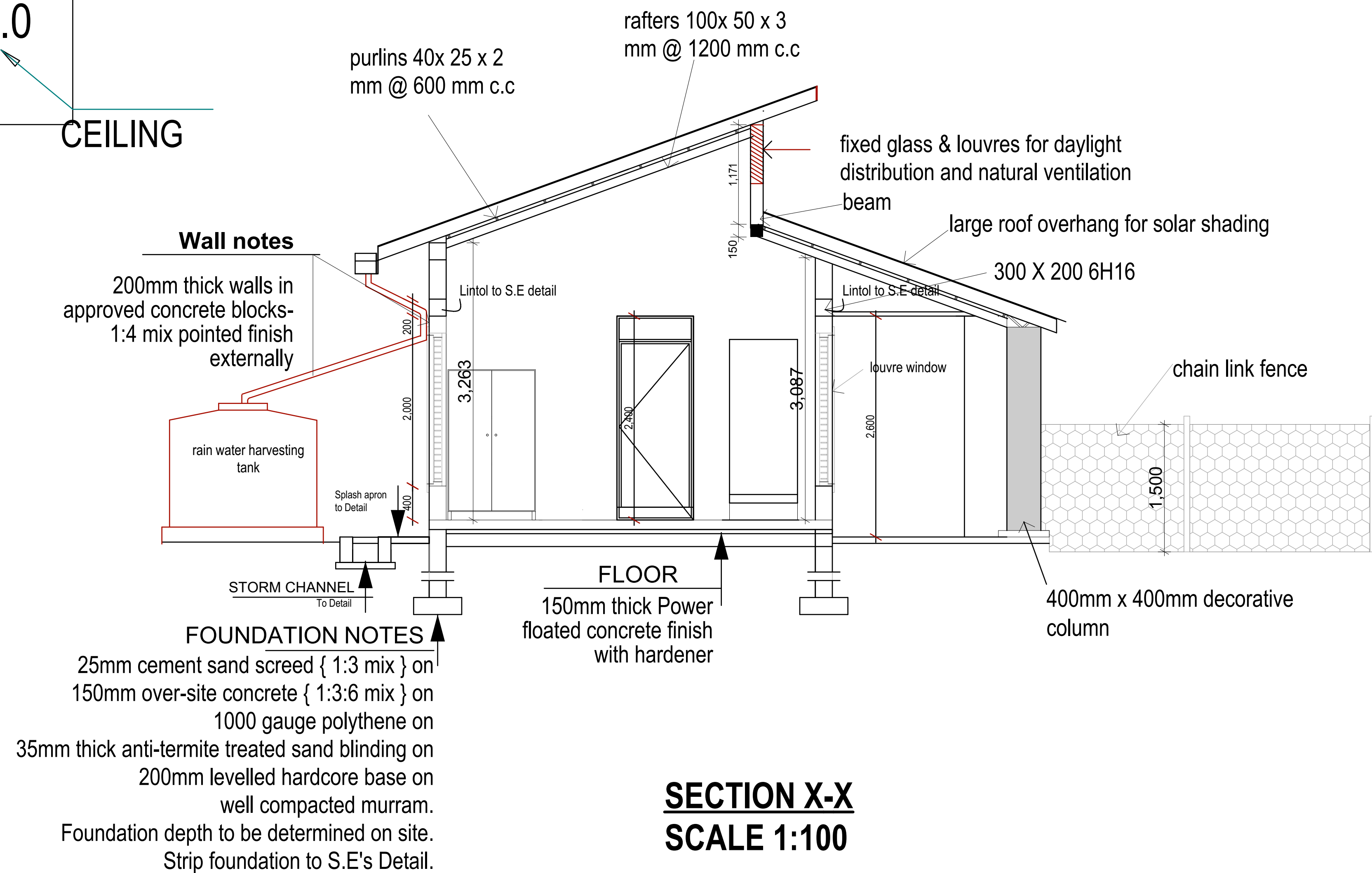
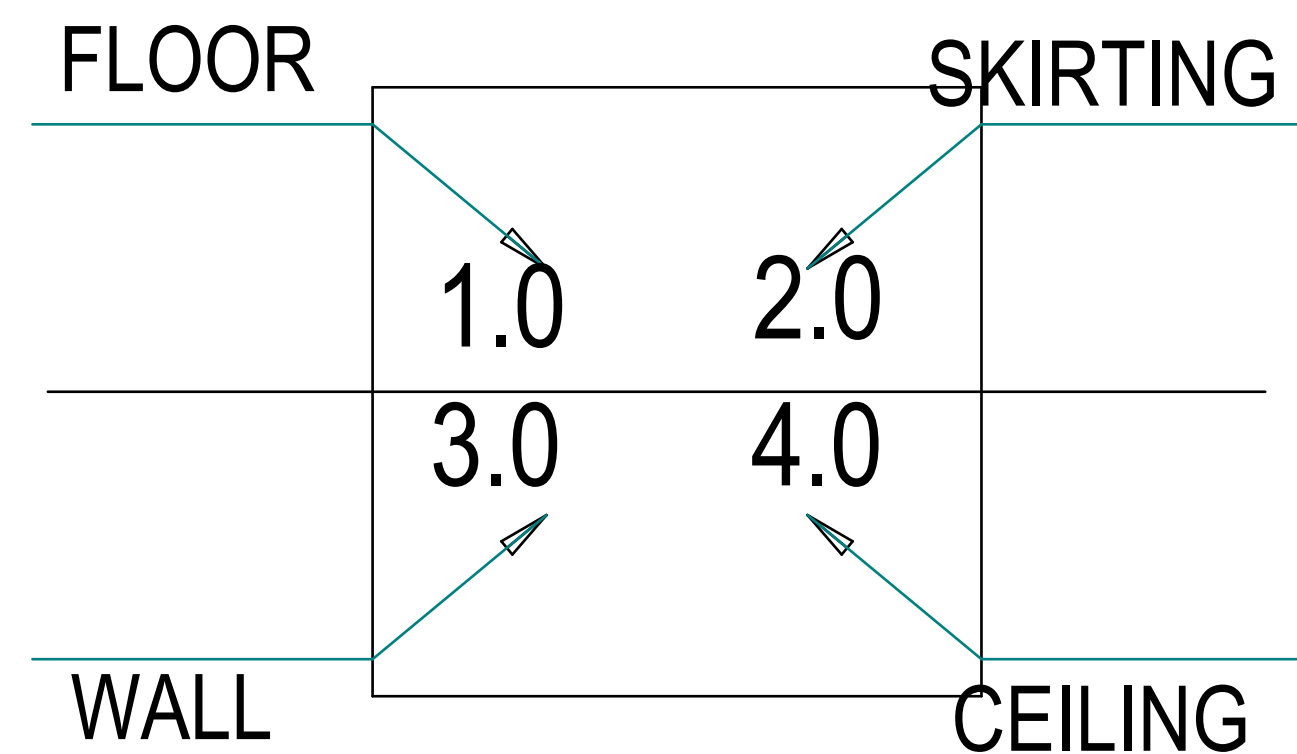
- 2.1. 150mm cement stone dust screed (Polished)
- 2.2. 100mm Ceramic tile skirting

3.0 WALL FINISH:

- 3.1. 8mm thick Matt finish wall tiles
- 3.2. Internal; 25 mm thick smooth plaster finish with 1 coat plaster primer and 3 coats silk vinyl approved colour paint
External;

4.0 CEILING:

- 4.1. 600 x 600mm suspended acoustic ceiling with vinyl finish
- 4.2. Sadomatt ceiling paint on 12mm thick plaster on slab soffit
- 4.3. Polynum sheet under roof



Belgian development agency
Infrastructure unit- TTE Project
Legacy Towers, Wing A - 5th Floor
Kyadondo Road, Nakasero
PO BOX 40131
KAMPALA UGANDA

PROJECT:

EARLY CHILDHOOD DEVELOPMENT
CENTRE AT NAKAPIRIPIT
TECHNICAL INSTITUTE

NOTES:

SECTION X-X

Scale: 1:100

Drawn by: Infra unit

Date: SEPTEMBER, 2022

DRG No:

Sheet No: 03

DOOR SCHEDULES 1:50

D01	D02	D03	D04
<p>Composite Steel casement door single swinging thru .90 degrees fixed on Steel frame to detail , include all accessories</p> <p>3 pairs of heavy duty action steel hinges Fixed with steel screws Steel mortice lock with</p>	<p>Solid core flush door : timber door frame: 25mm rubber door stop plugged to floor -as StarTec, [Cat No.937.11.711] Lock specs: 1 pair StarTec Goerg pull handles [Cat No; 903.00.863] door lock set as StarTec [Cat No 911.24.008]. complete with escutcheons. 1.5 pair StarTec single action hinges All architectural hardware to be 'UNION' or equal approved</p>	<p>Solid core flush door : Timber door frame: 25mm rubber door stop plugged to floor -as StarTec, [Cat No.937.11.711] Lock specs: 1 pair StarTec Goerg pull handles [Cat No; 903.00.863] door lock set as StarTec [Cat No 911.24.008]. complete with escutcheons. 1.5 pair StarTec single action hinges All architectural hardware to be 'UNION' or equal approved</p>	<p>1500 x Fabricated mild gate 20mm steel gratings at 150mm c/c</p>
01	01	01	01

WINDOW SCHEDULES 1:50

W01	W02	W03	W04	W05
<p>Louver window: 6mm thick Steel frame, 6.38mm glass thickness With sliding mosquito netting in aluminium framing</p> <p>Approved Window fasteners and locks</p>	<p>Louver window: 6mm thick Steel frame, 6.38mm glass thickness With sliding mosquito netting in aluminium framing</p> <p>Approved Window fasteners and locks</p>	<p>Louver window: 6mm thick Steel frame, 6.38mm glass thickness With sliding mosquito netting in aluminium framing</p> <p>Approved Window fasteners and locks</p>	<p>Louver window: 6mm thick Steel frame, 6.38mm glass thickness With sliding mosquito netting in aluminium framing</p> <p>Approved Window fasteners and locks</p>	<p>Louver window: 6mm thick Steel frame, 6.38mm glass thickness With sliding mosquito netting in aluminium framing</p> <p>Approved Window fasteners and locks</p>
03	04	01	03	04



Belgian development agency
Infrastructure unit- TTE Project
Legacy Towers, Wing A - 5th Floor
Kyadondo Road, Nakasero
PO BOX 40131
KAMPALA UGANDA

PROJECT:
EARLY CHILDHOOD DEVELOPMENT
CENTRE AT NAKAPIRIPIT
TECHNICAL INSTITUTE

NOTES:
DOOR &
WINDOW
SCHEDULES

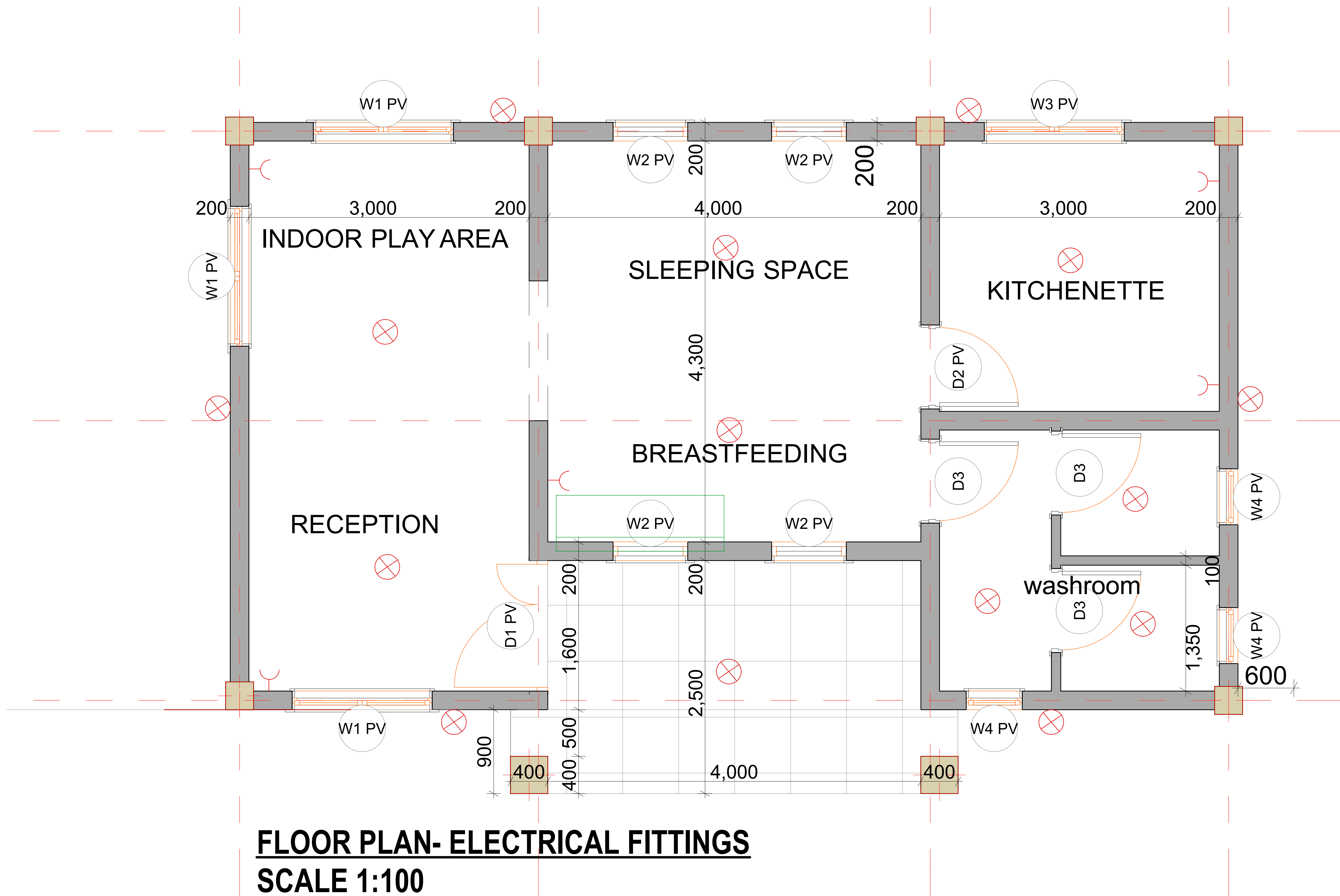
Scale: 1:100

Drawn by: Infra unit

Date: SEPTEMBER, 2022

DRG No:

Sheet No: 05



Belgian development agency
Infrastructure unit- TTE Project
 Legacy Towers, Wing A - 5th Floor
 Kyadondo Road, Nakasero
 PO BOX 40131
 KAMPALA UGANDA

PROJECT:
 EARLY CHILDHOOD DEVELOPMENT
 CENTRE AT NAKAPIRIPIT
 TECHNICAL INSTITUTE

NOTES:
 LIGHTING &
 SOCKETS

Scale: 1:100

Drawn by: Infra unit

Date: SEPTEMBER, 2022

DRG No: 05

Sheet No: 06