

# EARLY CHILDHOOD DEVELOPMENT CENTRE AT ST.DANIEL COMBONI POLYTECHNIC NAOI



Belgian development agency  
**Infrastructure unit- TTE Project**  
Legacy Towers, Wing A - 5<sup>th</sup> Floor  
Kyadondo Road, Nakasero  
PO BOX 40131  
KAMPALA UGANDA

**PROJECT:**

EARLY CHILDHOOD DEVELOPMENT  
CENTRE AT ST. DANIEL COMBONI  
POLYTECHNIC, NAOI

**NOTES:**

DRAWINGS

Scale: 1:100

Drawn by: Infra unit

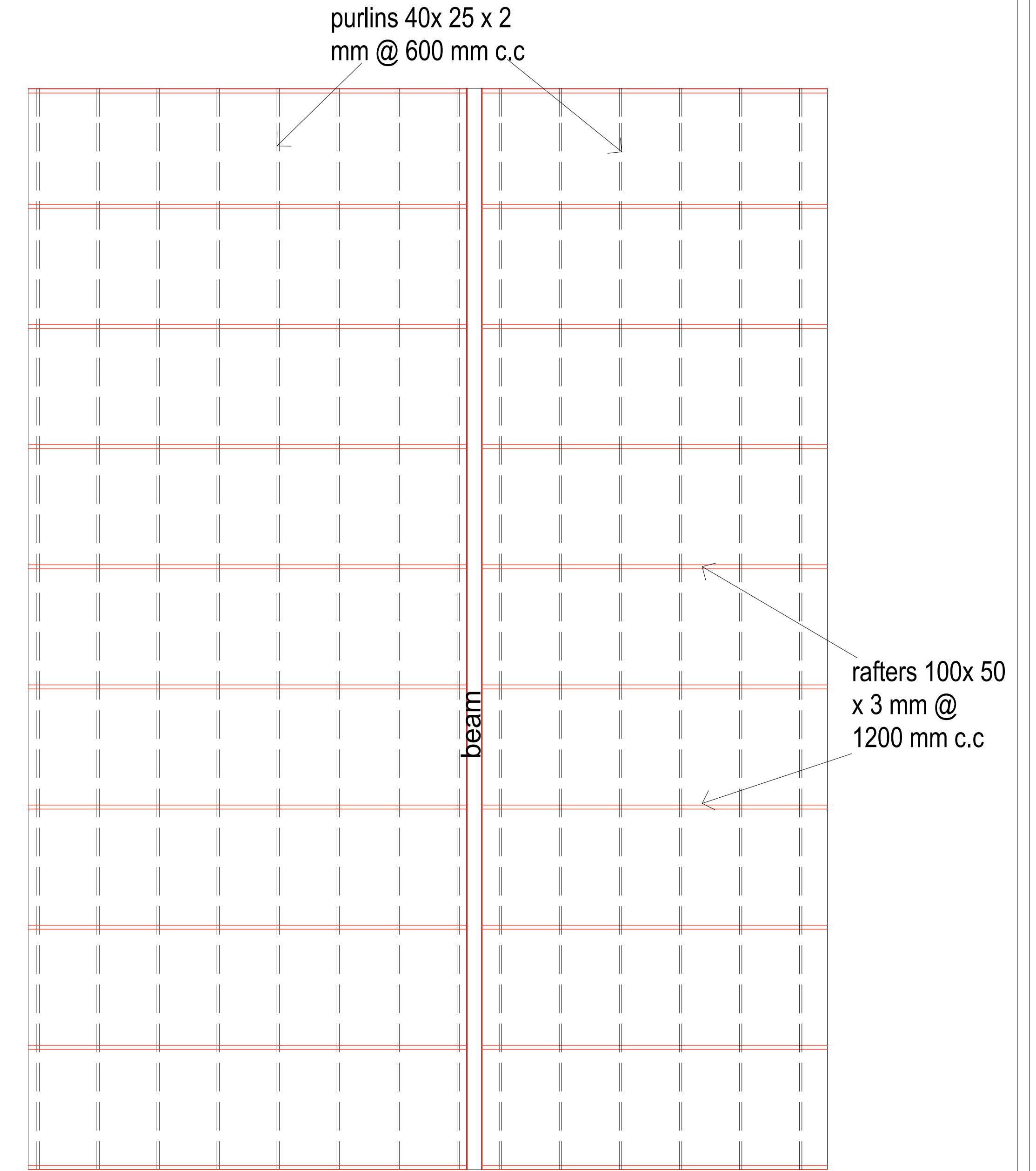
Date: SEPTEMBER, 2022

DRG No: .....

Sheet No: 01



**FLOOR PLAN**  
SCALE 1:100



**ROOF PLAN**  
SCALE 1:100



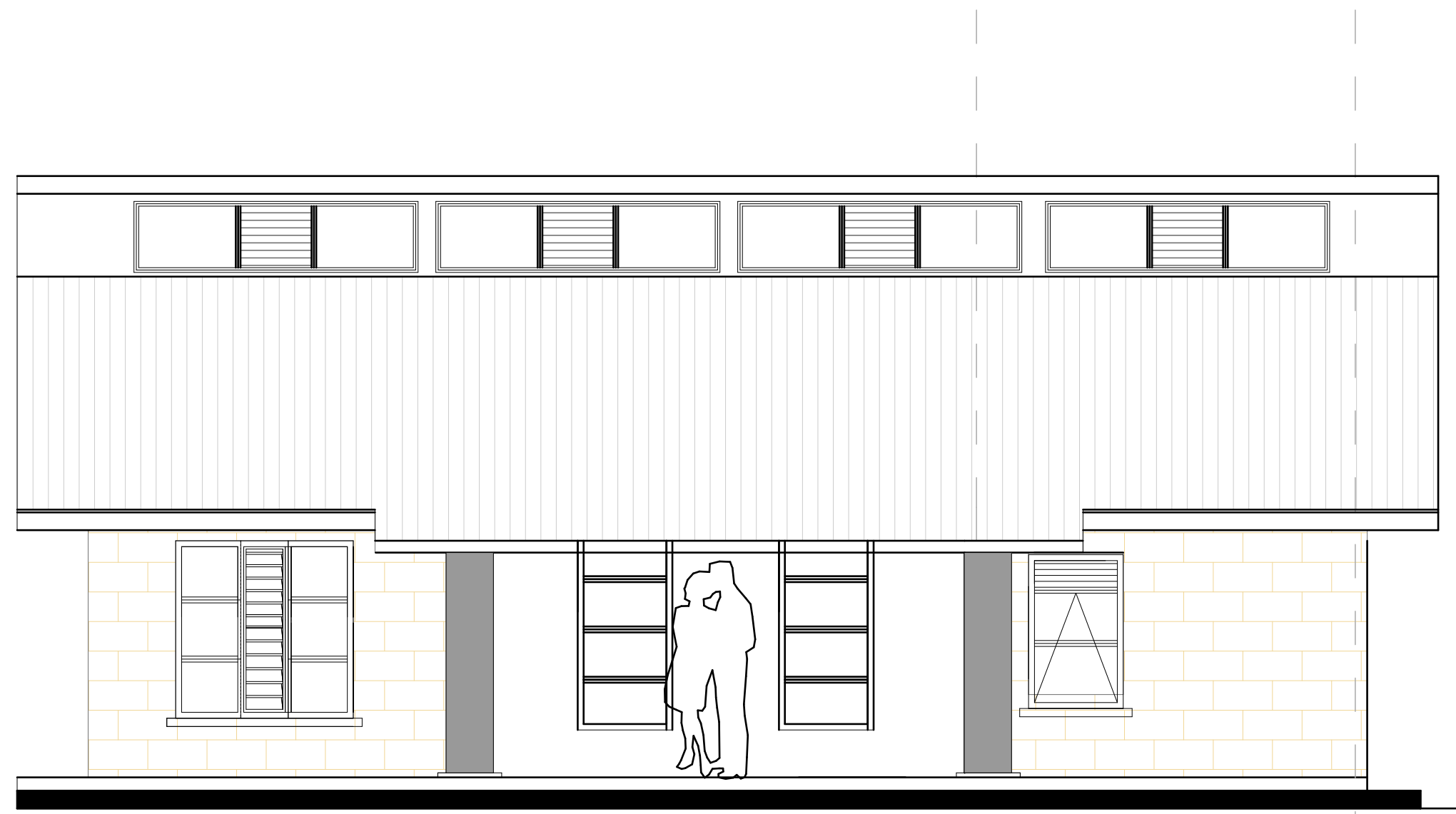
Belgian development agency  
**Infrastructure unit- TTE Project**  
 Legacy Towers, Wing A - 5<sup>th</sup> Floor  
 Kyadondo Road, Nakasero  
 PO BOX 40131  
 KAMPALA UGANDA

**PROJECT:**  
 EARLY CHILDHOOD DEVELOPMENT  
 CENTRE AT ST.DANIEL COMBONI  
 POLYTECHNIC, NAOI.

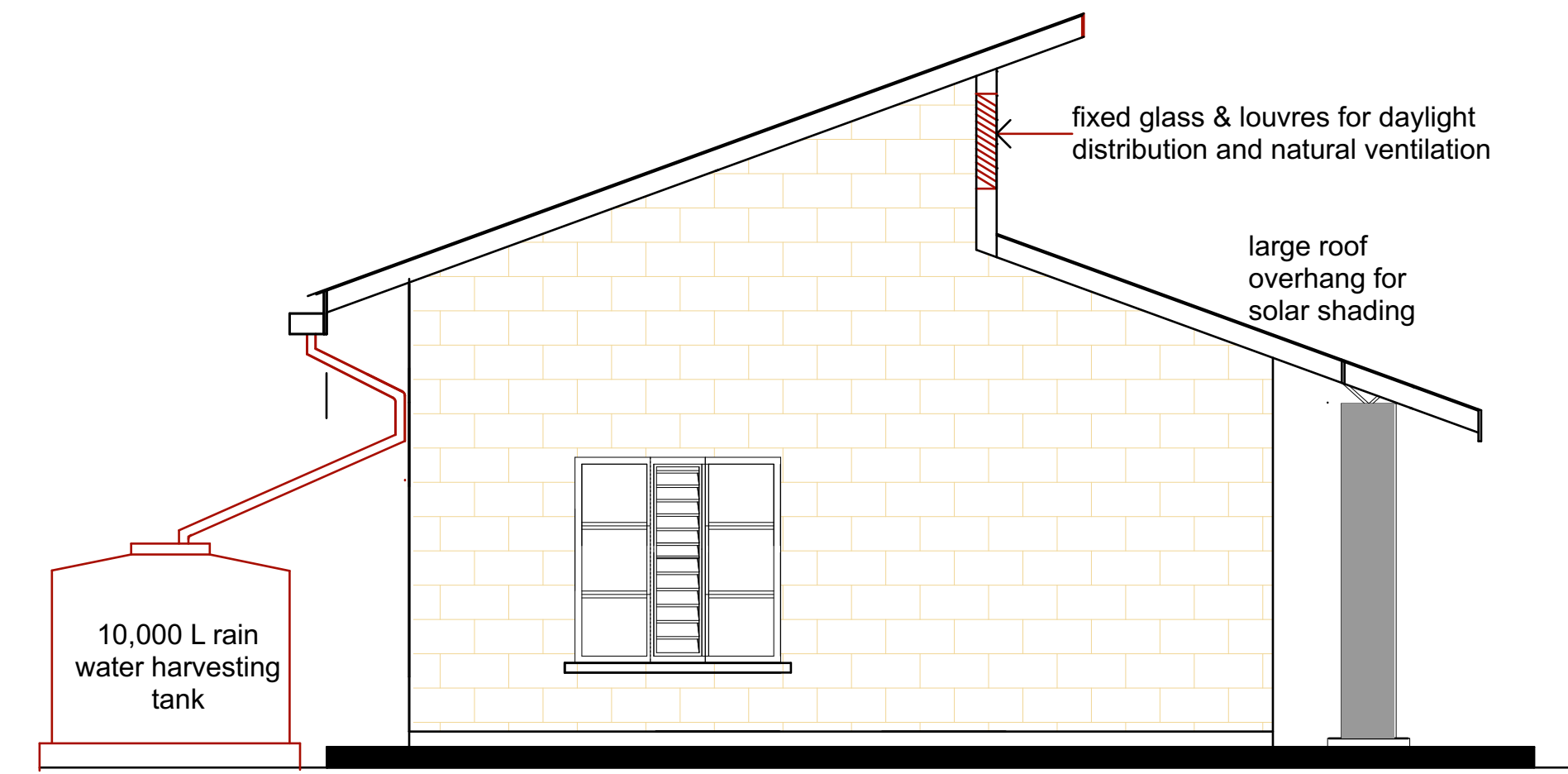
**NOTES:**  
 FLOOR & ROOF  
 PLAN

Scale: 1:100  
 Drawn by: Infra unit  
 Date: SEPTEMBER, 2022

DRG No: .....  
 Sheet No: 02



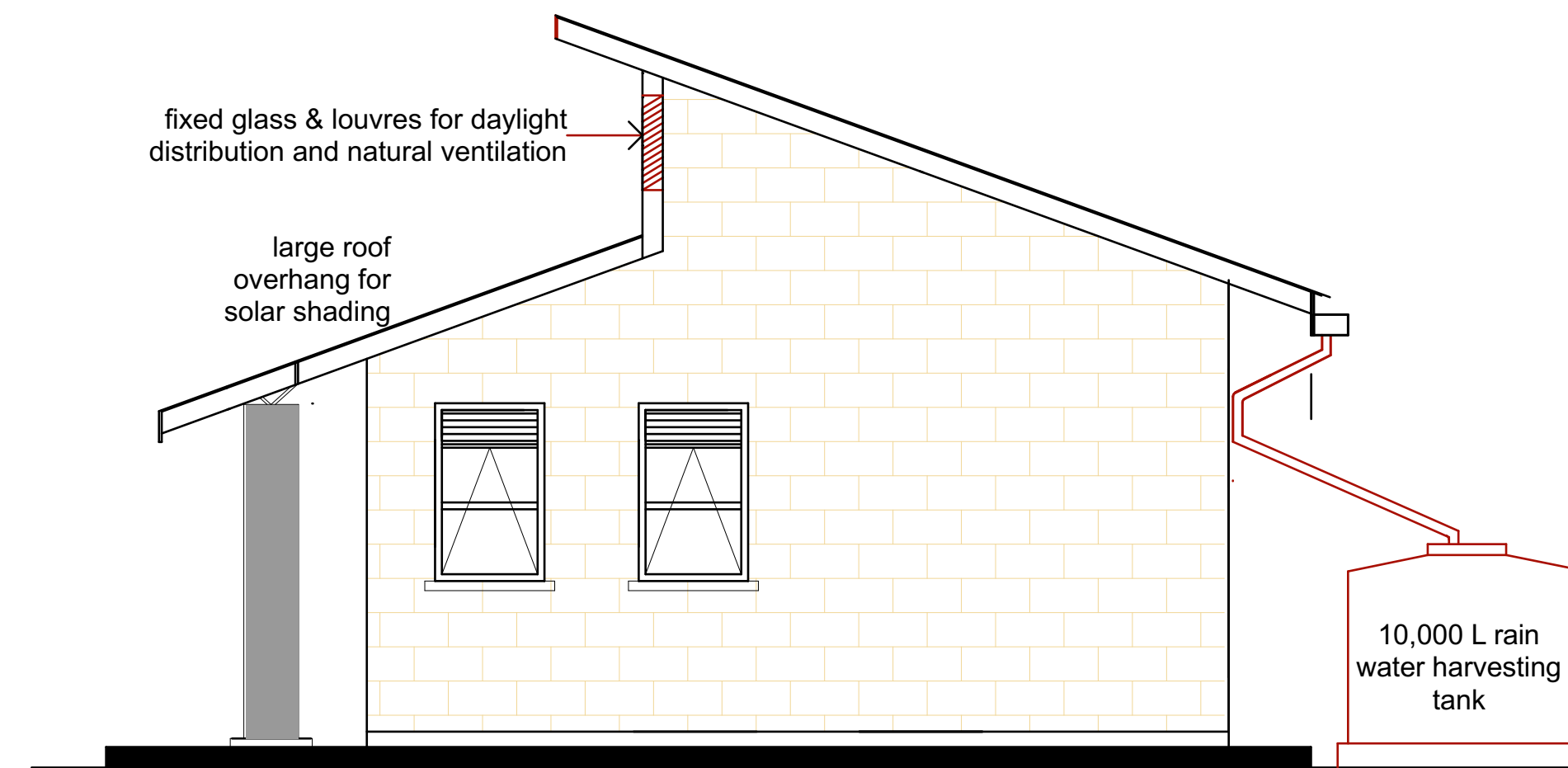
**ELEVATION 01**  
**SCALE 1:100**



**ELEVATION 02**  
**SCALE 1:100**



**ELEVATION 03**  
**SCALE 1:100**



**ELEVATION 04**  
**SCALE 1:100**



Belgian development agency  
**Infrastructure unit- TTE Project**  
Legacy Towers, Wing A - 5<sup>th</sup> Floor  
Kyadondo Road, Nakasero  
PO BOX 40131  
KAMPALA UGANDA

**PROJECT:**  
EARLY CHILDHOOD  
DEVELOPMENT CENTRE AT  
ST.DANIEL COMBONI  
POLYTECHNIC, NAOI.

**NOTES:**  
ELEVATIONS

Scale: 1:100

Drawn by: Infra unit

Date: SEPTEMBER, 2022

DRG No: .....

Sheet No: 04



## FINISHES SCHEDULE [SSP]

### 1.0 FLOOR:

- 1.1. Power floated Concrete with hardener
- 1.2. Tamped concrete with grooves
- 1.3. 80mm thick precast pavers
- 1.4. 15mm Thick non-slip ceramic tiles

### 2.0 SKIRTING:

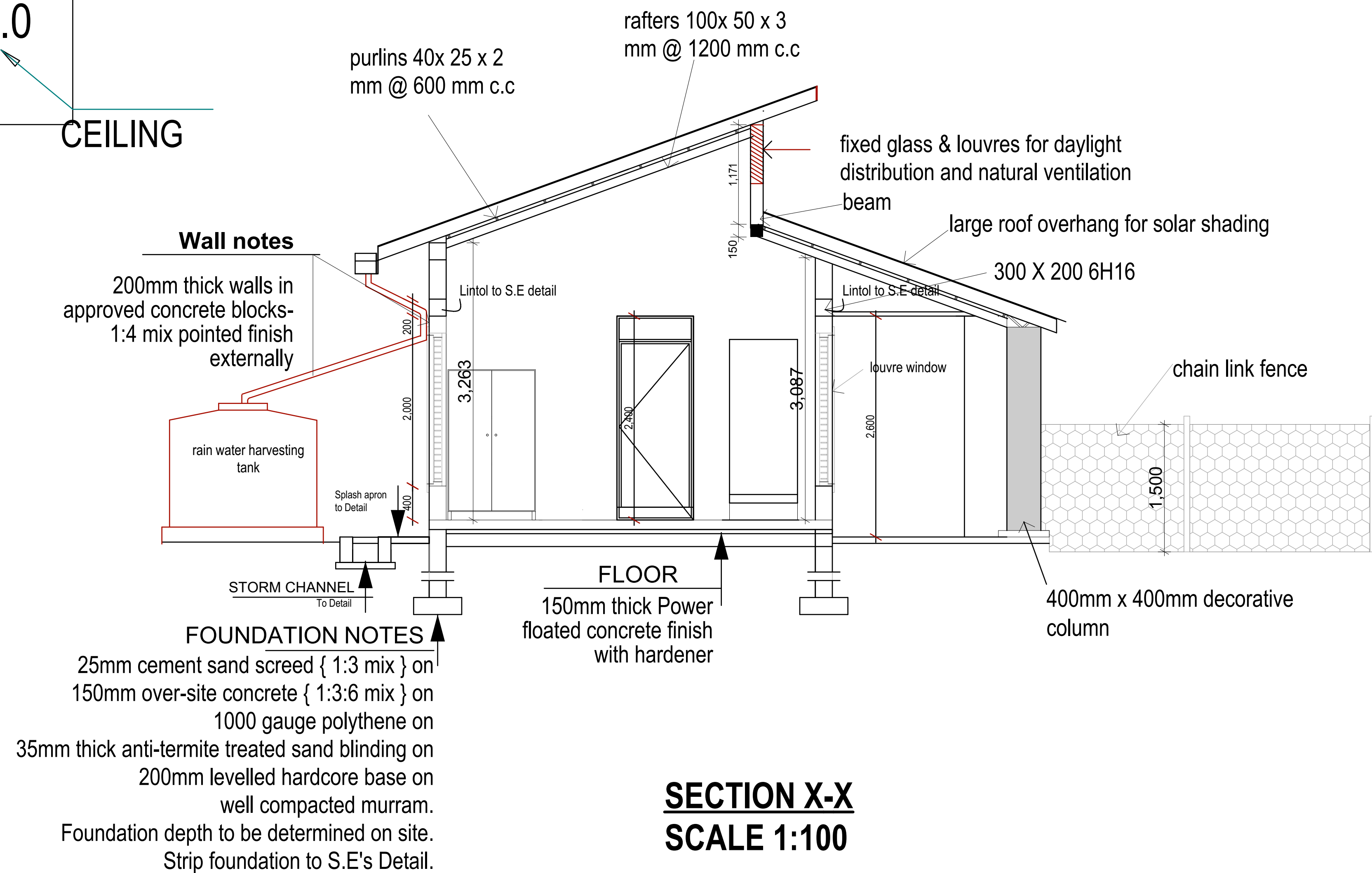
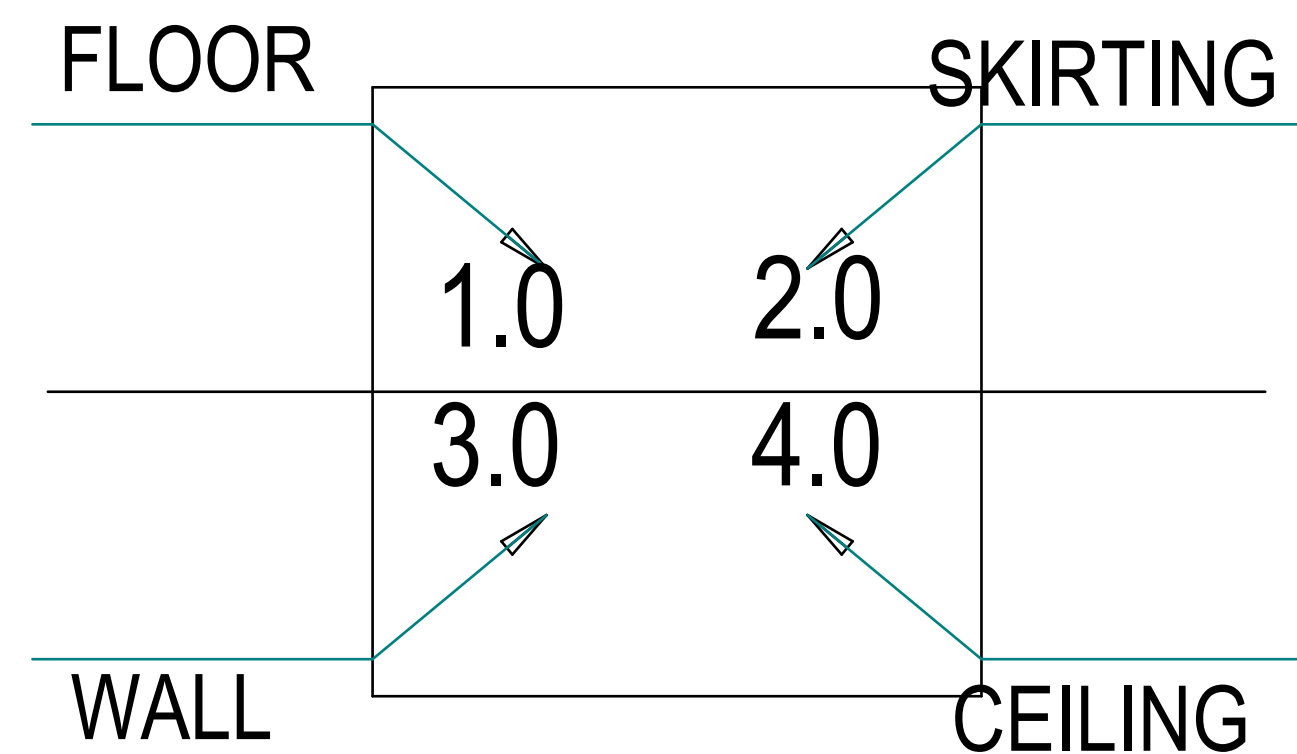
- 2.1. 150mm cement stone dust screed (Polished)
- 2.2. 100mm Ceramic tile skirting

### 3.0 WALL FINISH:

- 3.1. 8mm thick Matt finish wall tiles
- 3.2. Internal; 25 mm thick smooth plaster finish with 1 coat plaster primer and 3 coats silk vinyl approved colour paint  
External;

### 4.0 CEILING:

- 4.1. 600 x 600mm suspended acoustic ceiling with vinyl finish
- 4.2. Sadomatt ceiling paint on 12mm thick plaster on slab soffit
- 4.3. Polynum sheet under roof



Belgian development agency  
**Infrastructure unit- TTE Project**  
Legacy Towers, Wing A - 5<sup>th</sup> Floor  
Kyadondo Road, Nakasero  
PO BOX 40131  
KAMPALA UGANDA

### PROJECT:

EARLY CHILDHOOD DEVELOPMENT  
CENTRE AT ST.DANIEL COMBONI  
POLYTECHNIC, NAOI.

### NOTES:

SECTION X-X

Scale: 1:100

Drawn by: Infra unit

Date: SEPTEMBER, 2022

DRG No: .....

Sheet No: 03

## DOOR SCHEDULES 1:50

<b>D01</b>	<b>D02</b>	<b>D03</b>	<b>D04</b>
<p>Composite Steel casement door single swinging thru .90 degrees fixed on Steel frame to detail , include all accessories</p> <p>3 pairs of heavy duty action steel hinges Fixed with steel screws Steel mortice lock with</p>	<p>Solid core flush door : timber door frame: 25mm rubber door stop plugged to floor -as StarTec, [Cat No.937.11.711] Lock specs: 1 pair StarTec Goerg pull handles [ Cat No; 903.00.863] door lock set as StarTec [Cat No 911.24.008]. complete with escutcheons. 1.5 pair StarTec single action hinges All architectural hardware to be 'UNION' or equal approved</p>	<p>Solid core flush door: Timber door frame: 25mm rubber door stop plugged to floor -as StarTec, [Cat No.937.11.711] Lock specs: 1 pair StarTec Goerg pull handles [ Cat No; 903.00.863] door lock set as StarTec [Cat No 911.24.008]. complete with escutcheons. 1.5 pair StarTec single action hinges All architectural hardware to be 'UNION' or equal approved</p>	<p>1500 x Fabricated mild gate 20mm steel gratings at 150mm c/c</p>
<b>01</b>	<b>01</b>	<b>01</b>	<b>01</b>

## WINDOW SCHEDULES 1:50

<b>W01</b>	<b>W02</b>	<b>W03</b>	<b>W04</b>	<b>W05</b>
<p>Louver window: 6mm thick Steel frame, 6.38mm glass thickness With sliding mosquito netting in aluminium framing</p> <p>Approved Window fasteners and locks</p>	<p>Louver window: 6mm thick Steel frame, 6.38mm glass thickness With sliding mosquito netting in aluminium framing</p> <p>Approved Window fasteners and locks</p>	<p>Louver window: 6mm thick Steel frame, 6.38mm glass thickness With sliding mosquito netting in aluminium framing</p> <p>Approved Window fasteners and locks</p>	<p>Louver window: 6mm thick Steel frame, 6.38mm glass thickness With sliding mosquito netting in aluminium framing</p> <p>Approved Window fasteners and locks</p>	<p>Louver window: 6mm thick Steel frame, 6.38mm glass thickness With sliding mosquito netting in aluminium framing</p> <p>Approved Window fasteners and locks</p>
<b>03</b>	<b>04</b>	<b>01</b>	<b>03</b>	<b>04</b>



Belgian development agency  
**Infrastructure unit- TTE Project**  
Legacy Towers, Wing A - 5<sup>th</sup> Floor  
Kyadondo Road, Nakasero  
PO BOX 40131  
KAMPALA UGANDA

**PROJECT:**  
EARLY CHILDHOOD DEVELOPMENT  
CENTRE AT ST.DANIEL COMBONI  
POLYTECHNIC, NAOI.

**NOTES:**  
DOOR &  
WINDOW  
SCHEDULES

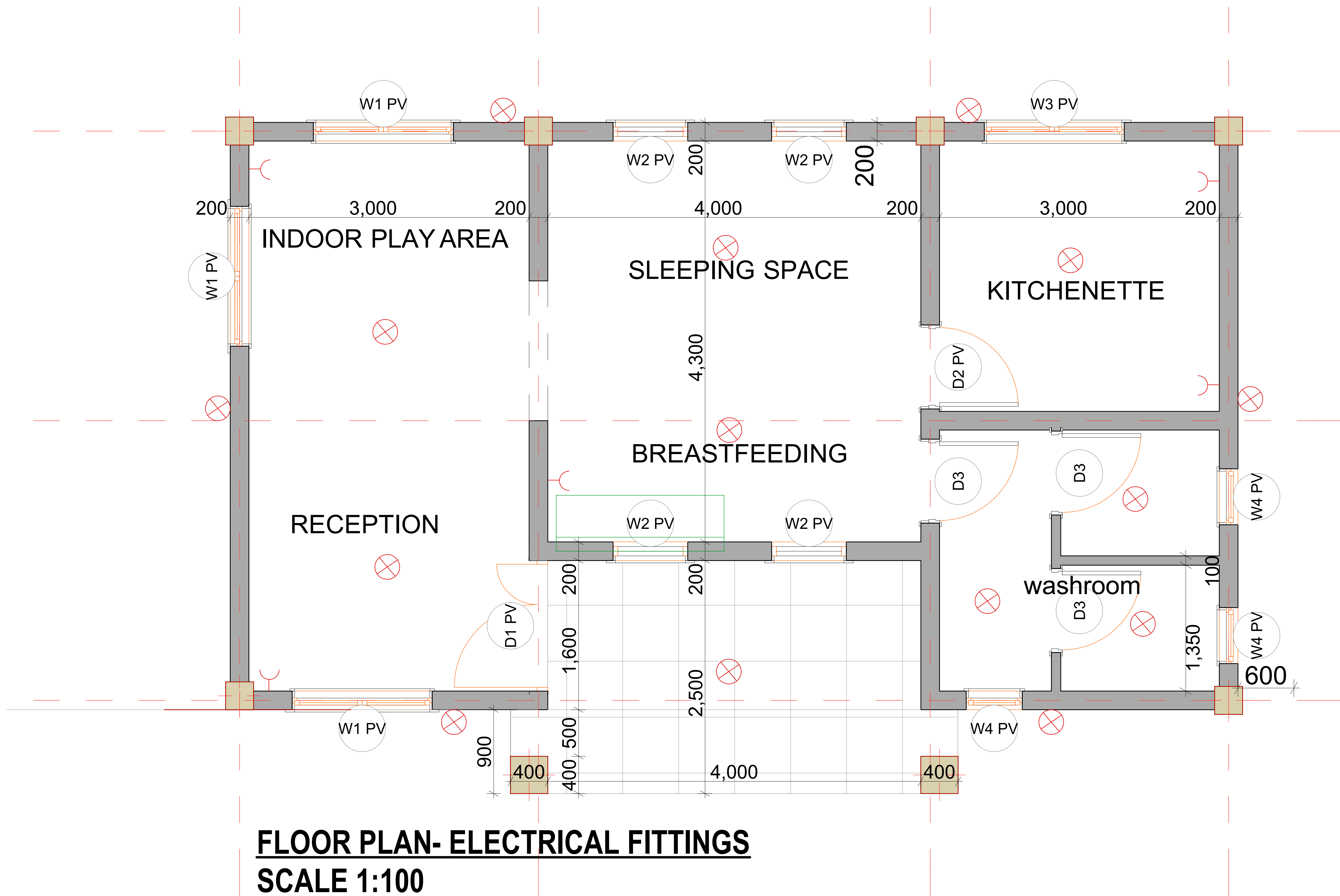
Scale: 1:100

Drawn by: Infra unit

Date: SEPTEMBER, 2022

DRG No: .....

Sheet No: 05



LEGEND	
⊗	light fixture
⌋	socket

**FLOOR PLAN- ELECTRICAL FITTINGS**  
**SCALE 1:100**



Belgian development agency  
**Infrastructure unit- TTE Project**  
 Legacy Towers, Wing A - 5<sup>th</sup> Floor  
 Kyadondo Road, Nakasero  
 PO BOX 40131  
 KAMPALA UGANDA

**PROJECT:**  
 EARLY CHILDHOOD DEVELOPMENT  
 CENTRE AT ST.DANIEL COMBONI  
 POLYTECHNIC, NAOI

**NOTES:**  
 LIGHTING &  
 SOCKETS

Scale: 1:100  
 Drawn by: Infra unit  
 Date: SEPTEMBER, 2022

DRG No: 05  
 Sheet No: 06