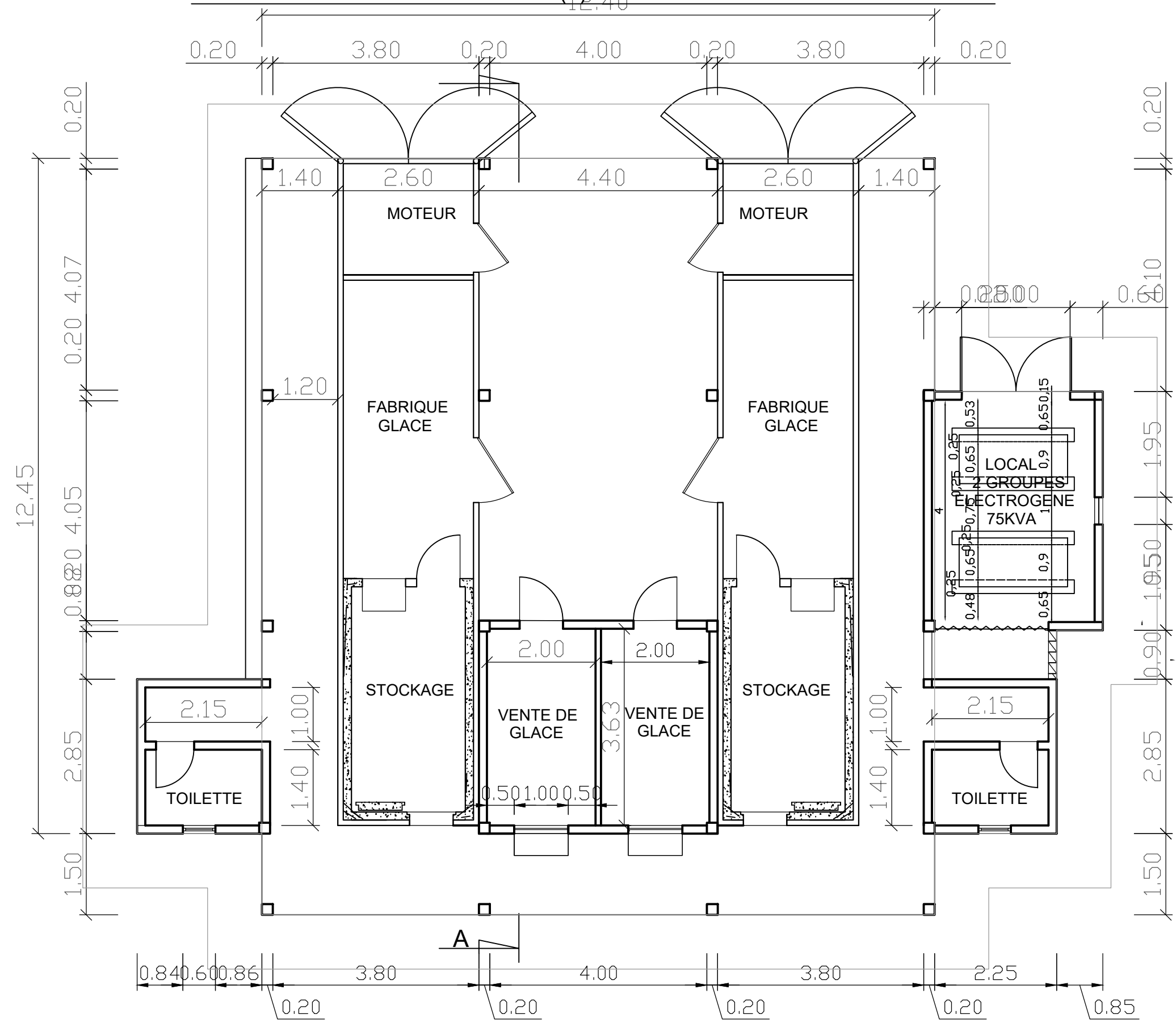
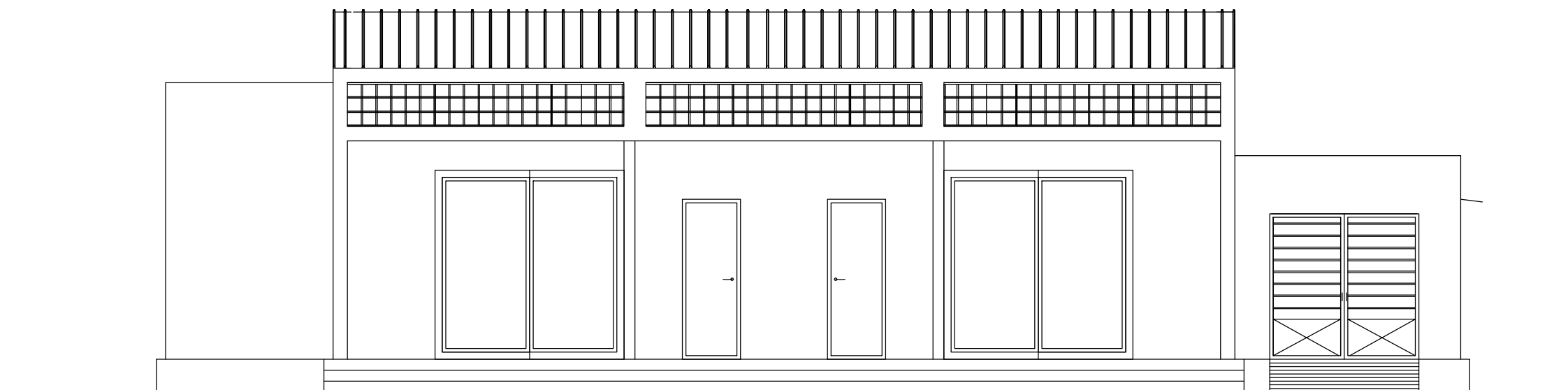


BATIMENT POUR ABRITER DEUX (2) UNITES DE PRODUCTION DE GLACE

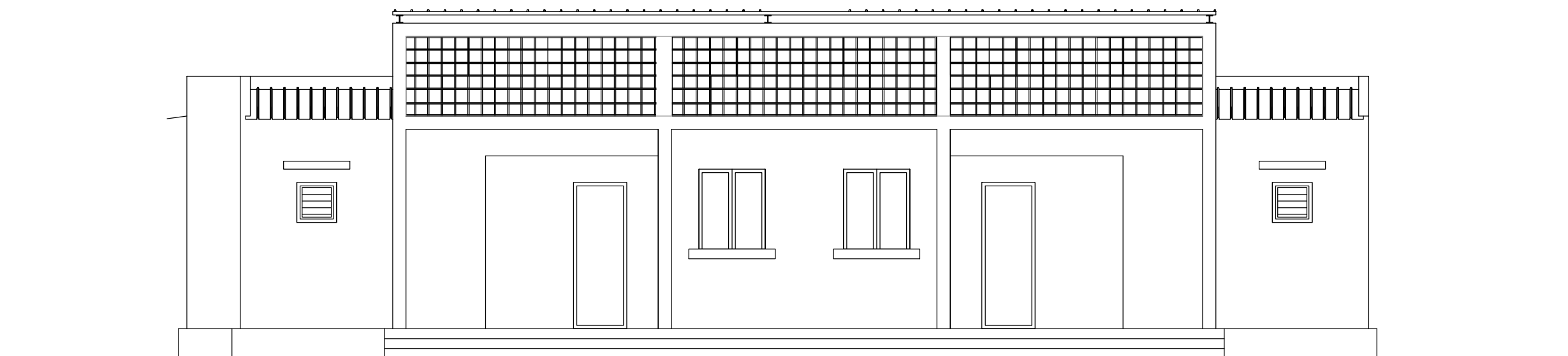


VUE EN PLAN

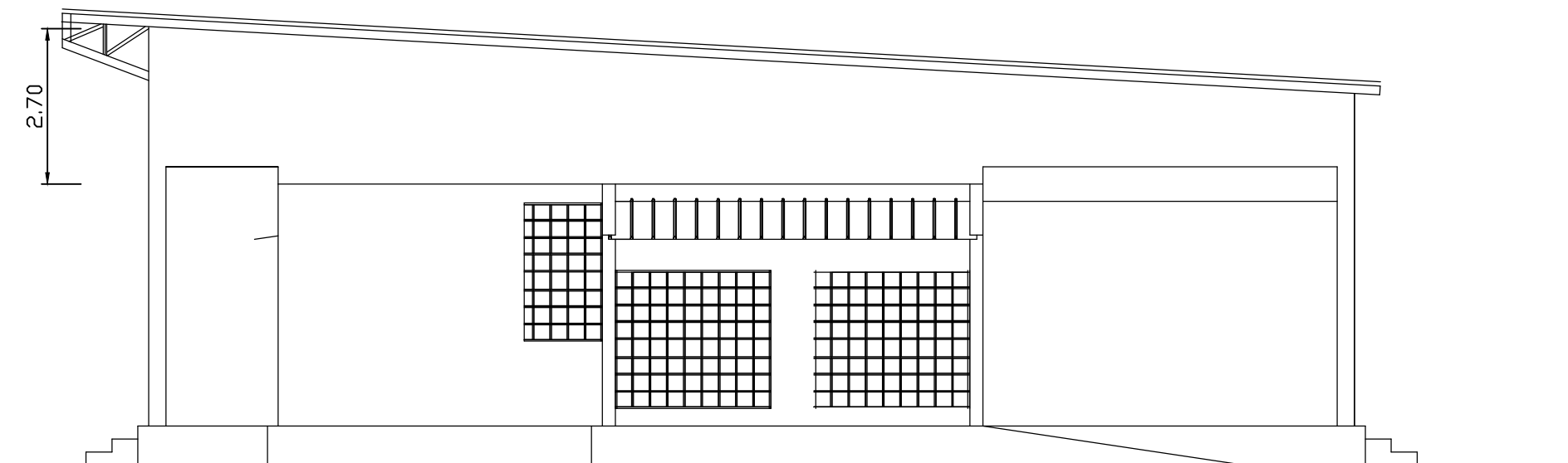
BATIMENT POUR ABRITER DEUX (2) UNITES DE PRODUCTION DE GLACE



FACADE PRINCIPALE

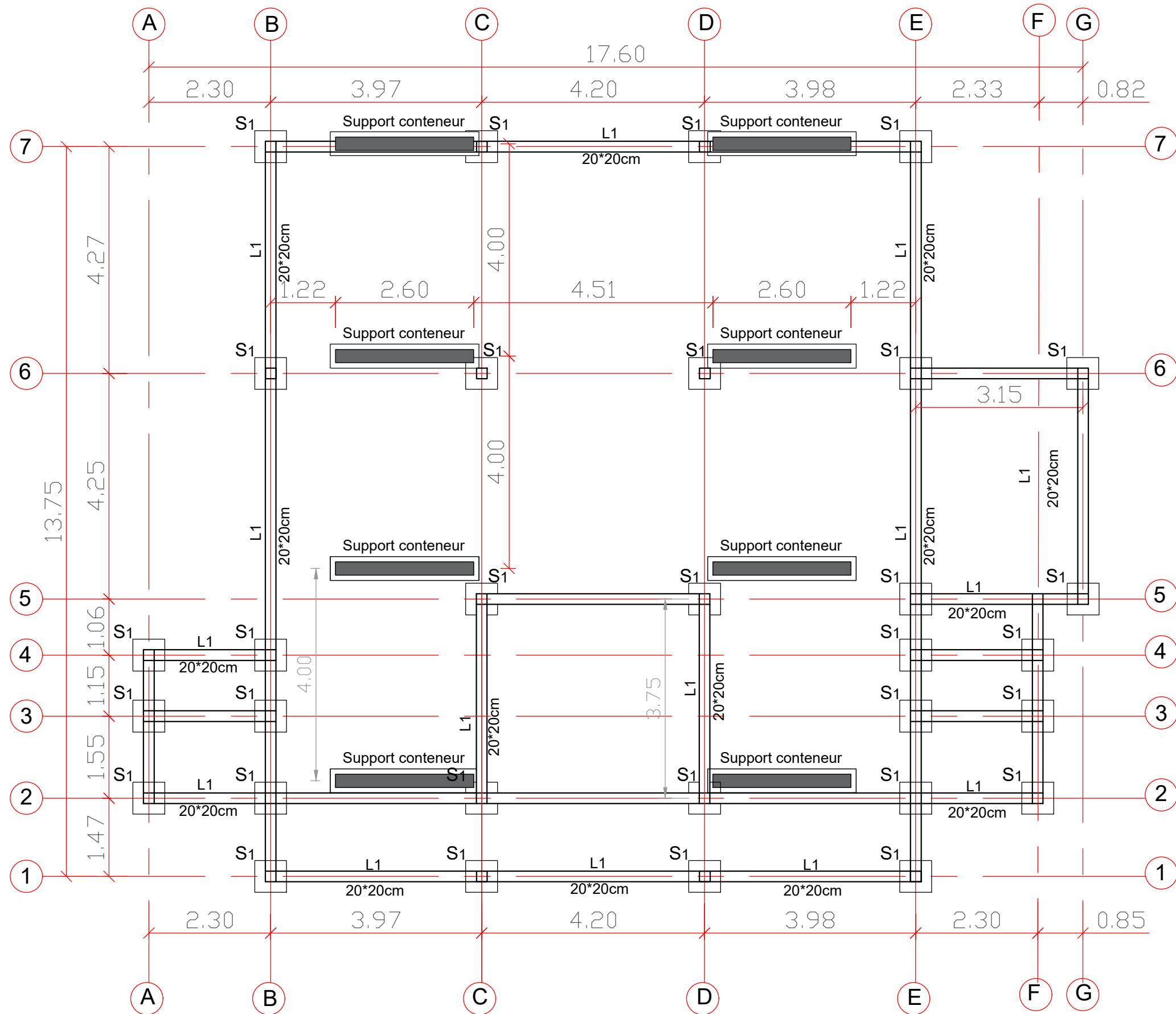


FACADE POSTERIEURE



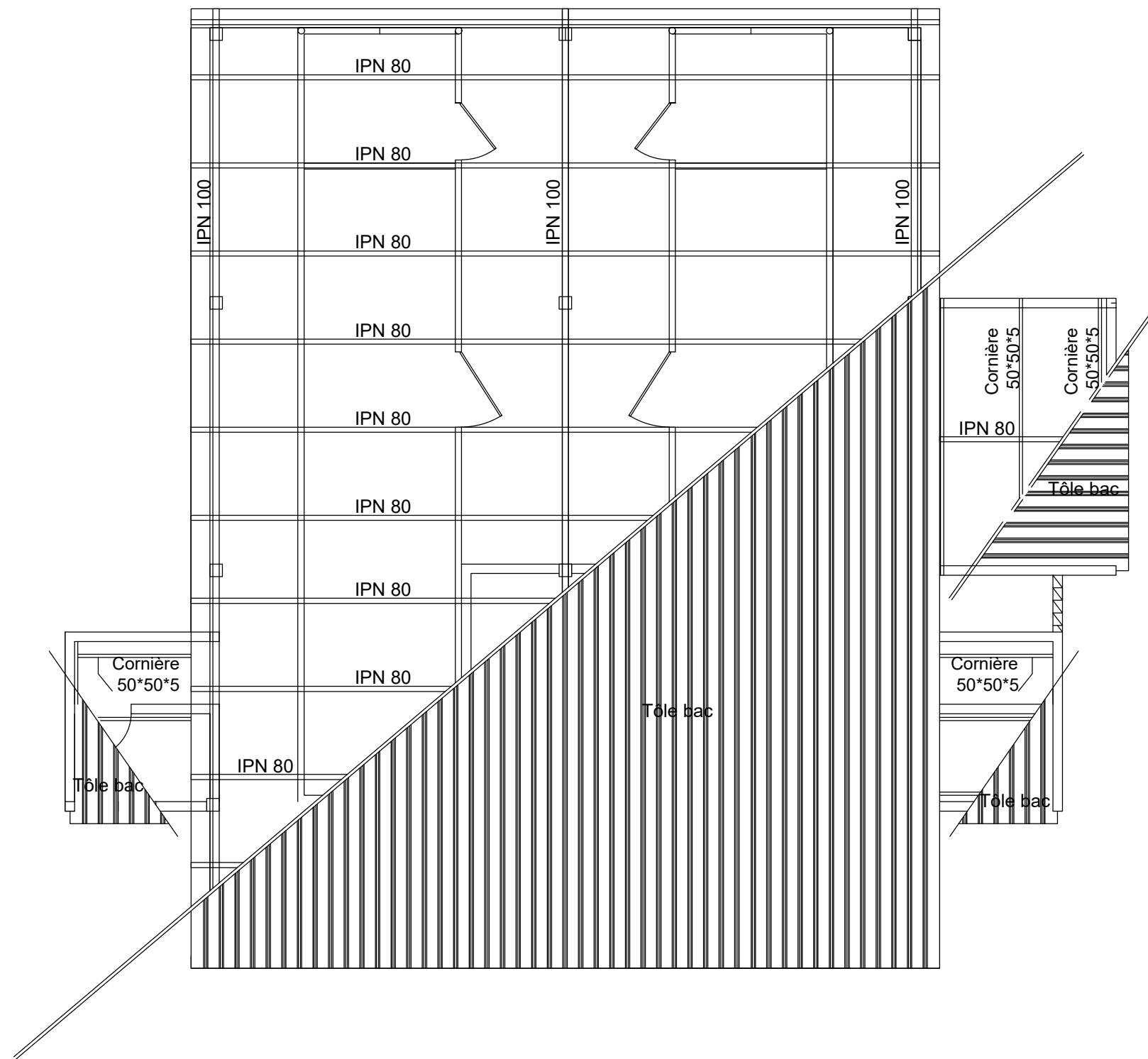
FACADE LAT. GAUCHE

BATIMENT POUR ABRITER DEUX UNITES DE FABRIQUE DE GLACE







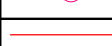

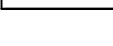

FONDATION

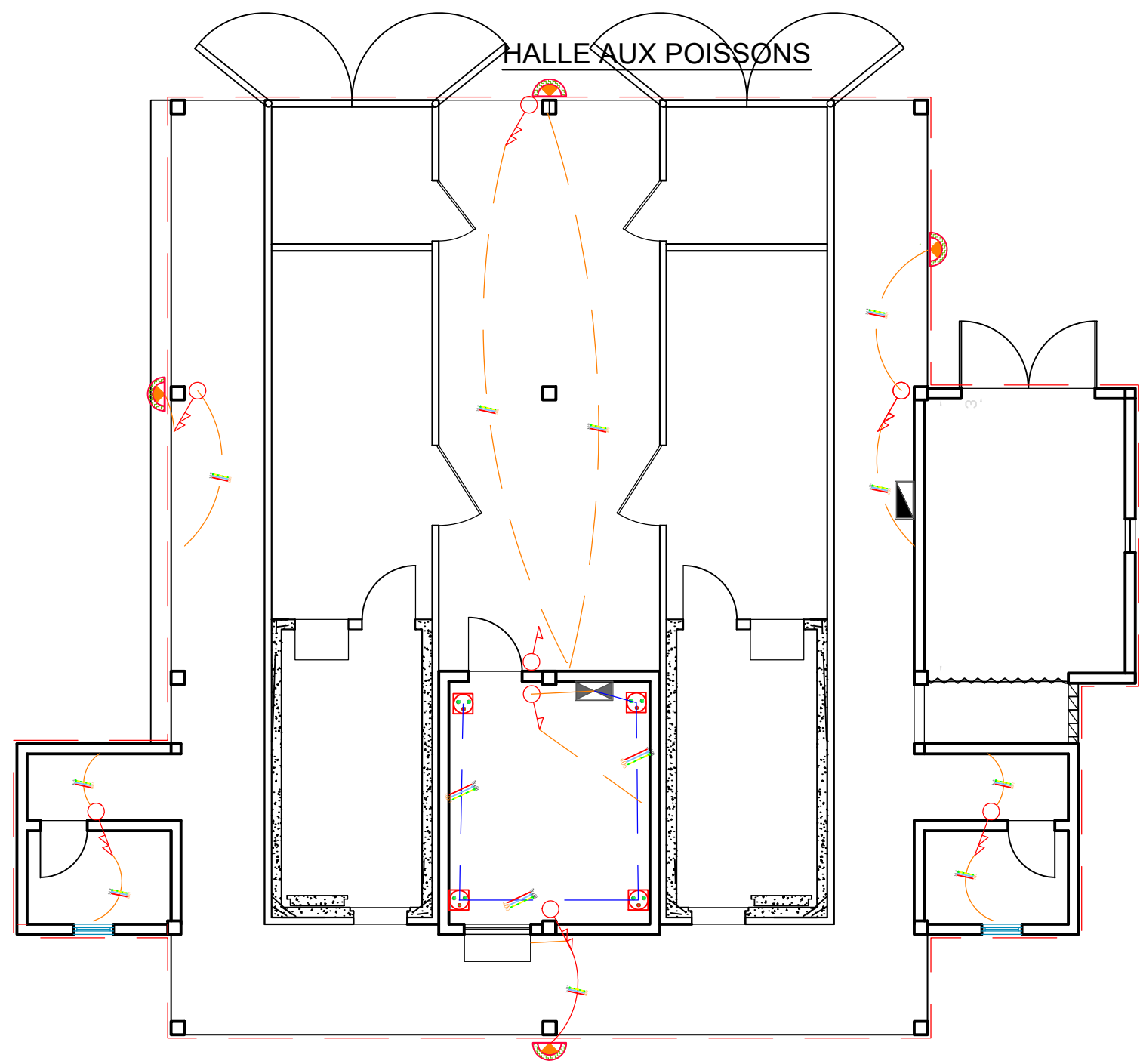
BATIMENT POUR ABRITER DEUX UNITES DE FABRIQUE DE GLACE



PLAN DE TOITURE

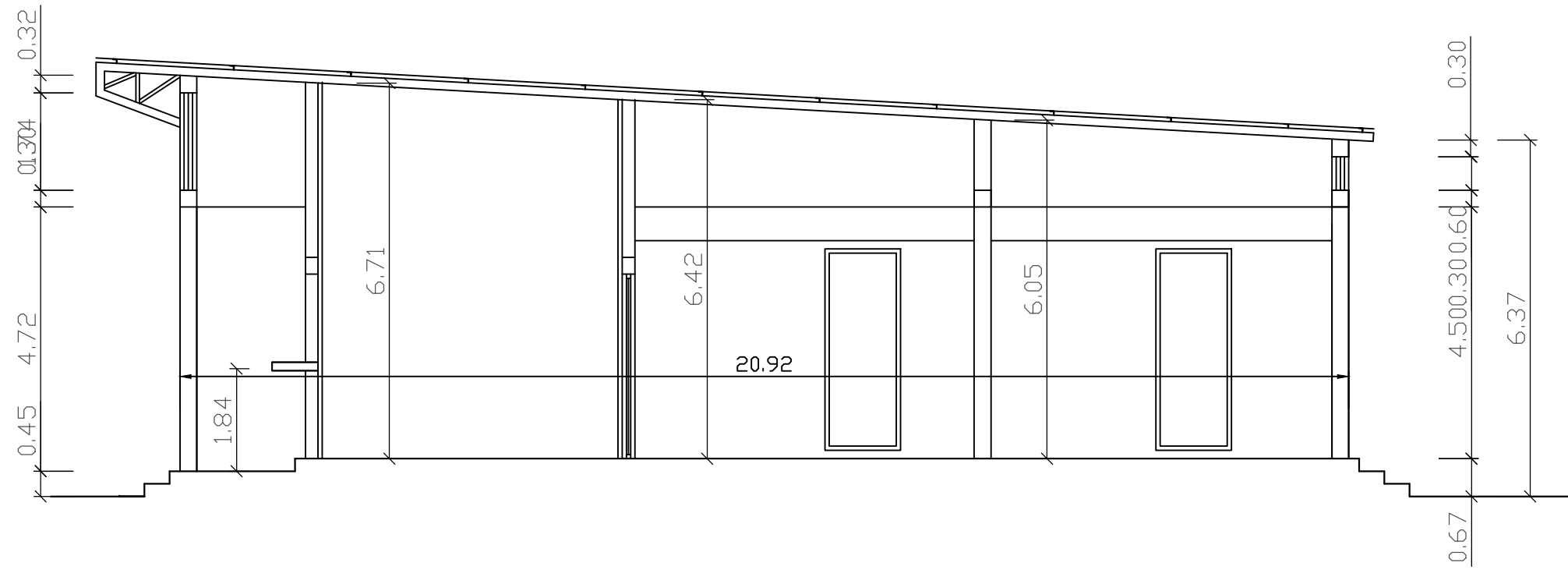
BATIMENT POUR ABRITER DEUX UNITES DE FABRIQUE DE GLACE

	Réglette Fluo. 1.20
	Hublot rond étanche
	Interrupteur simple
	Interrupteur double
	Prise de courant 2P+T
	Câble de terre en cuivre nu
	Boîte de distribution
	Coffret de répartition



PLAN D'ELECTRICITE

BATIMENT POUR ABRITER DEUX UNITES DE FABRIQUE DE GLACE

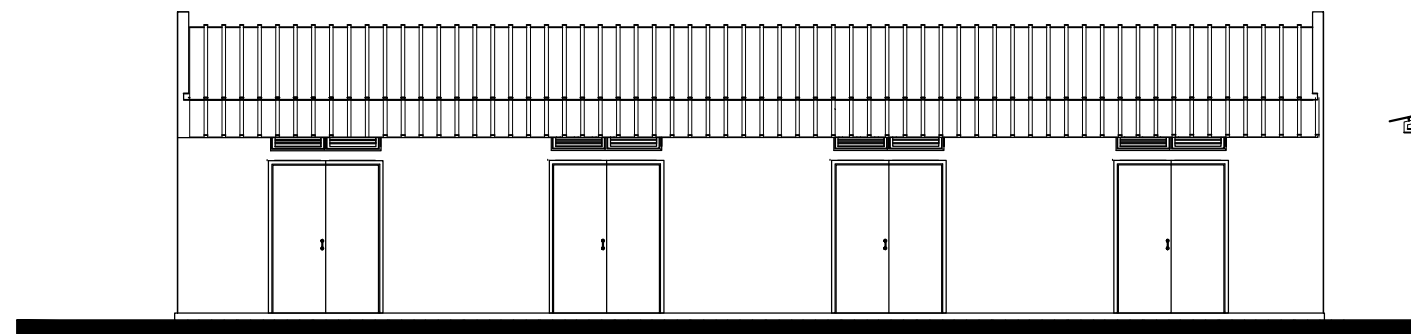
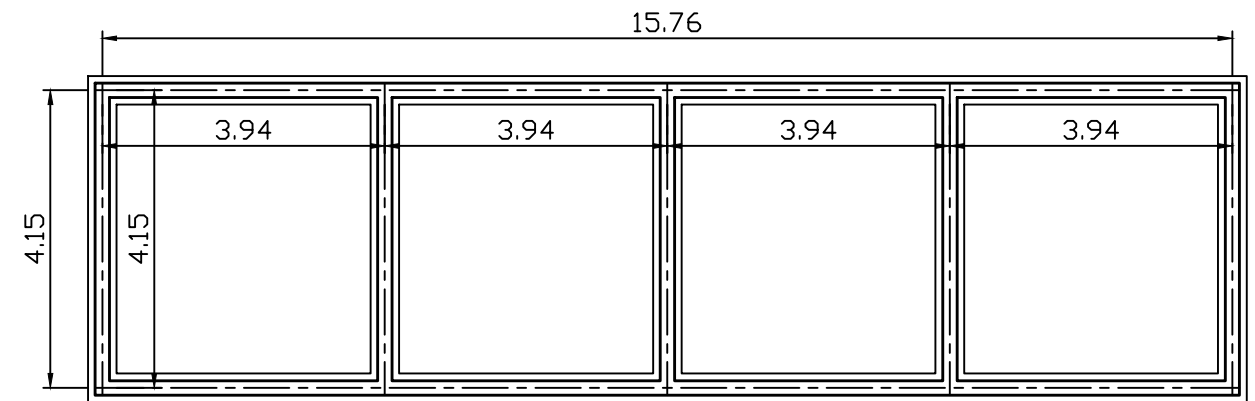


COUPE A-A

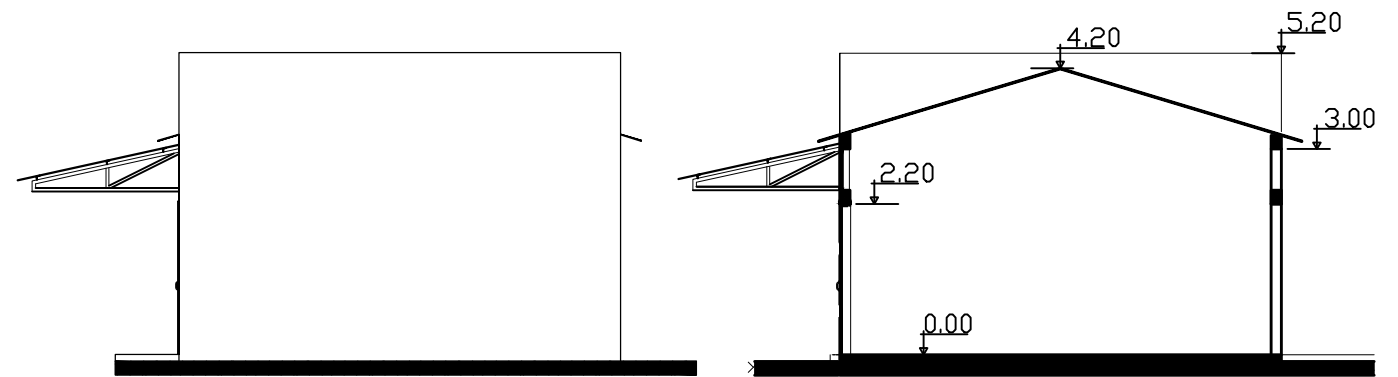
BLOC DE 4 MAGASINS



Vue en plan

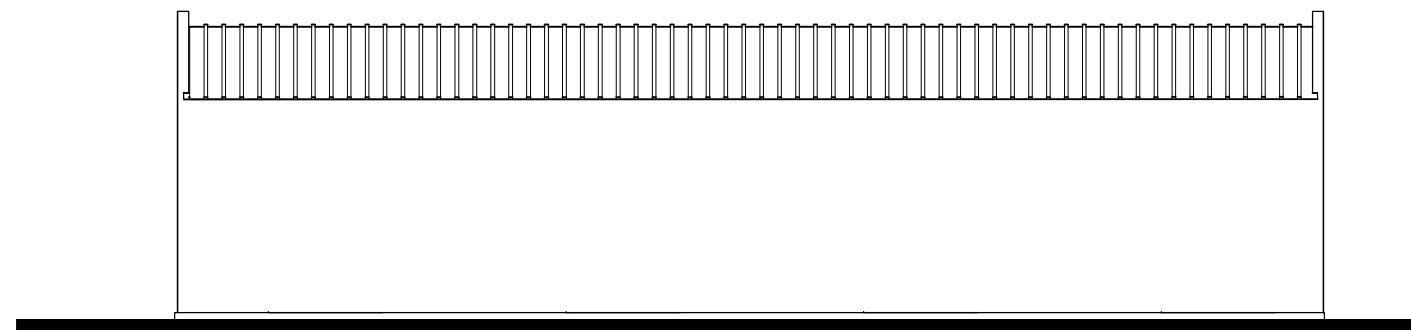


Façade Principale

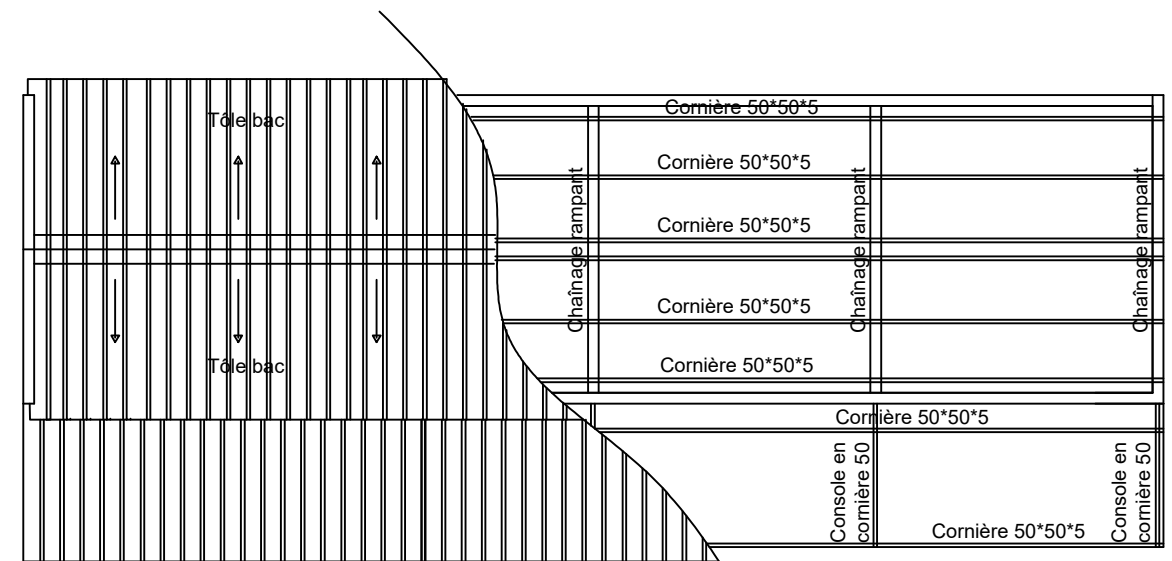


Façade Lat. Droite

Coupe AA

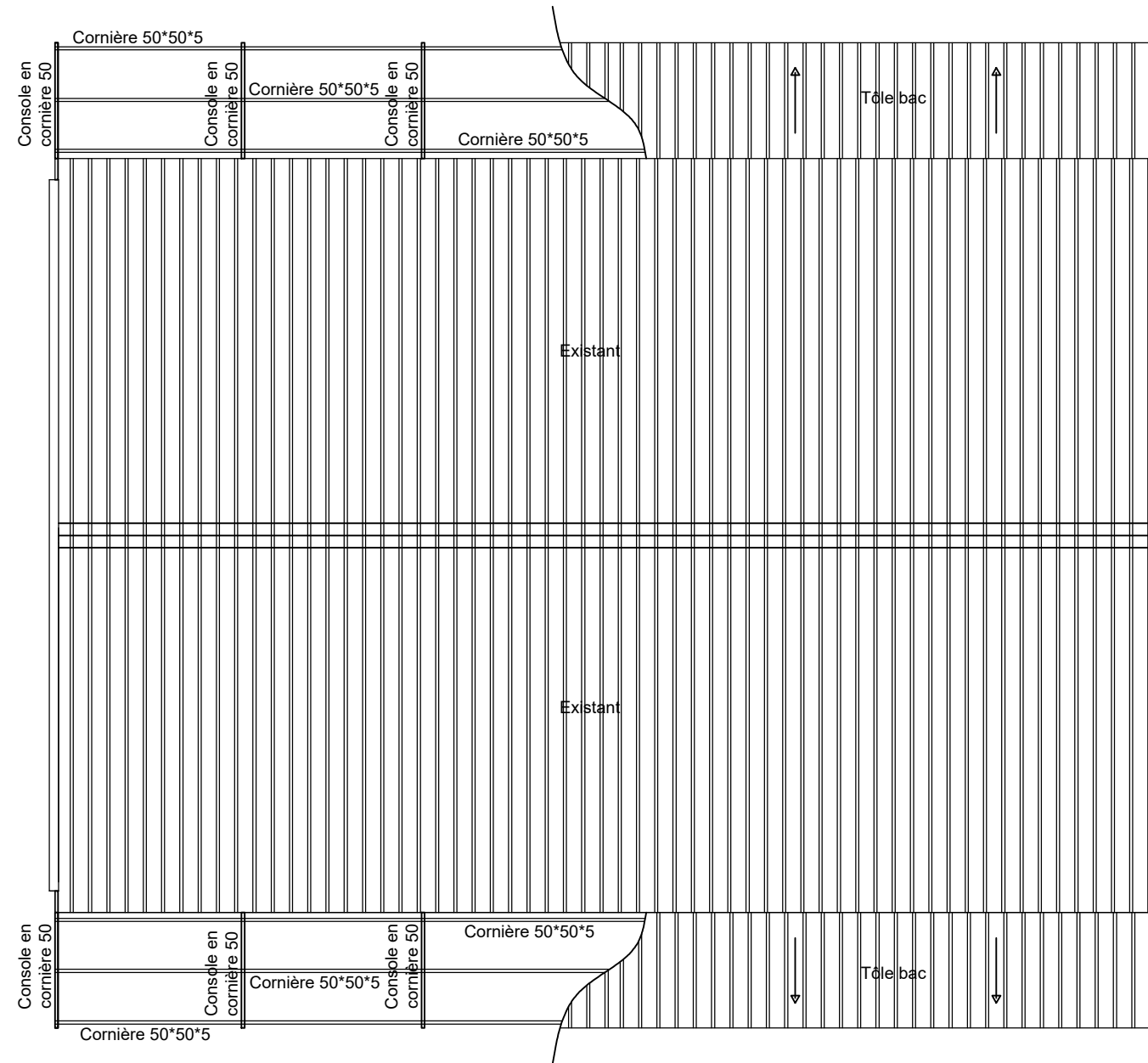


Façade Postérieure



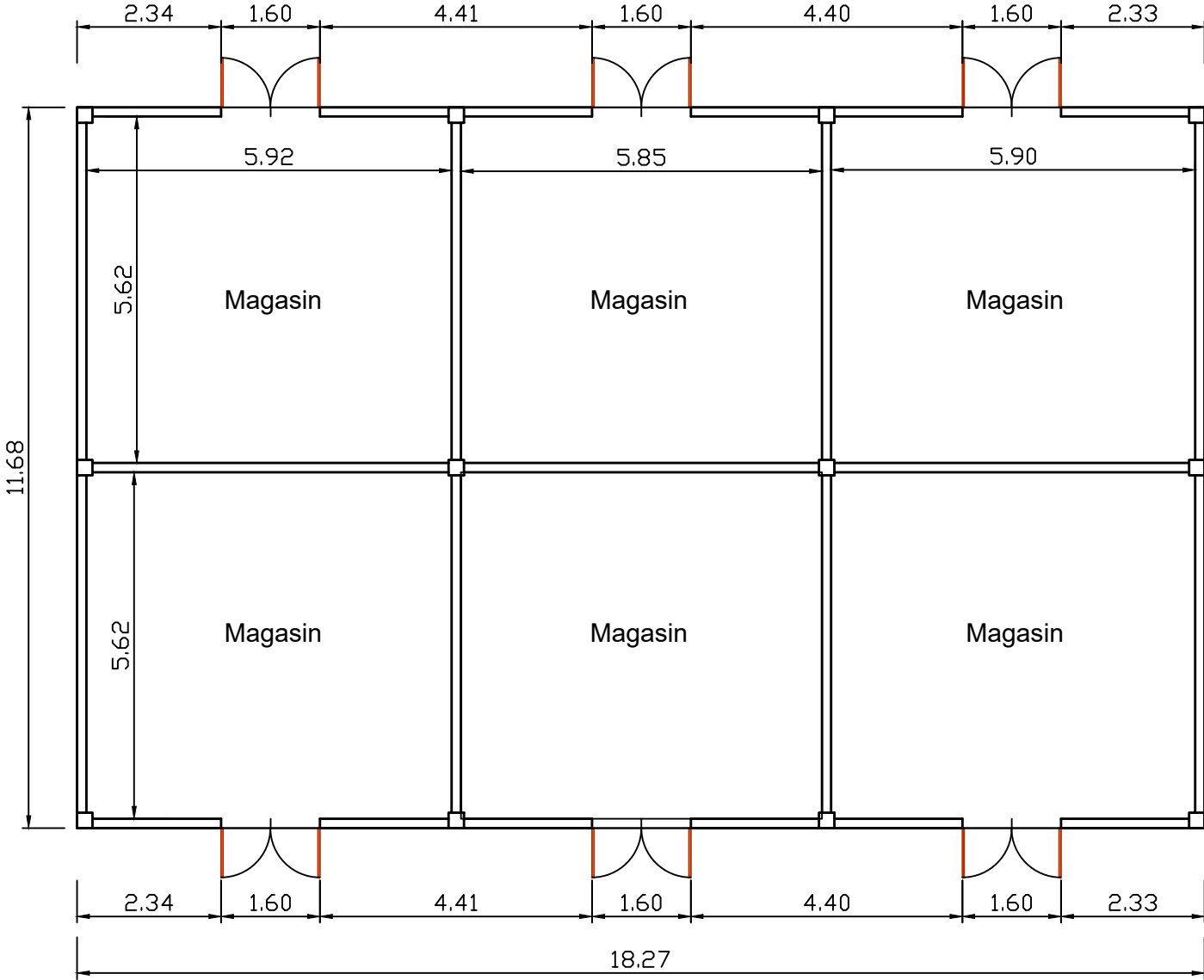
Plan de toiture

ANCIEN LOCAL DE RAMENDAGE TRANSFORME EN BLOC DE SIX (06) MAGASINS

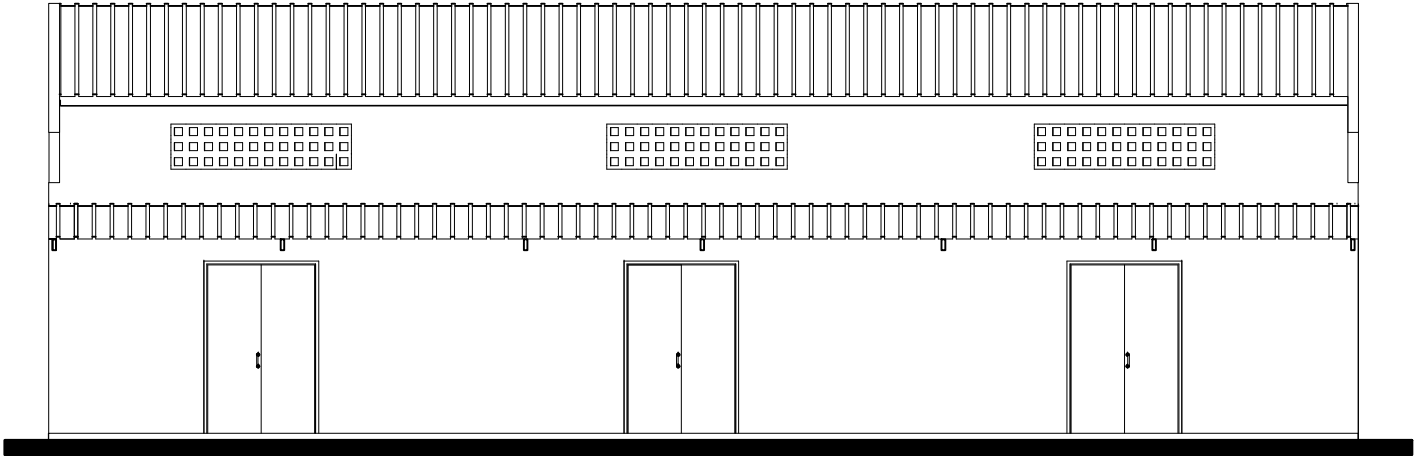


Plan de toiture

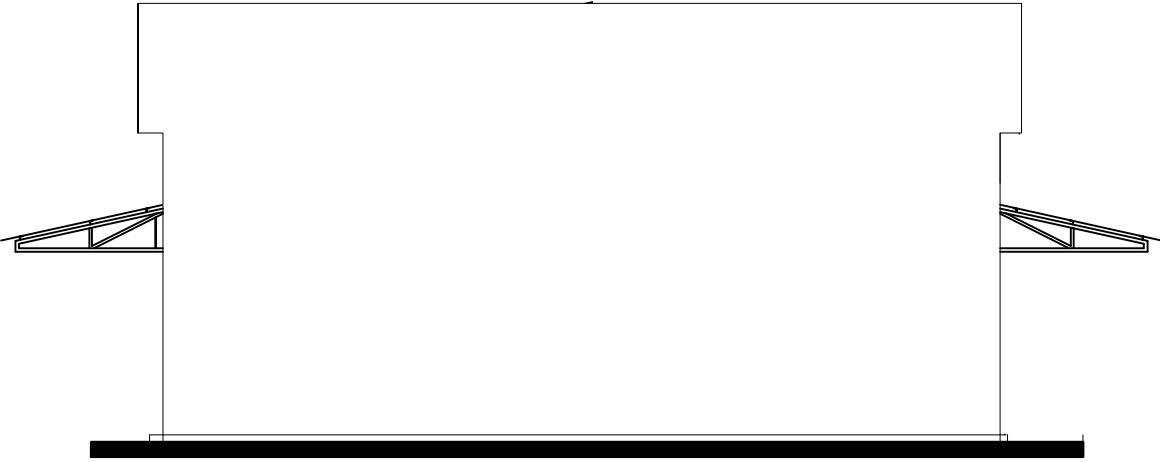
ANCIEN LOCAL DE RAMENDAGE TRANSFORME EN BLOC DE 6 MAGASINS



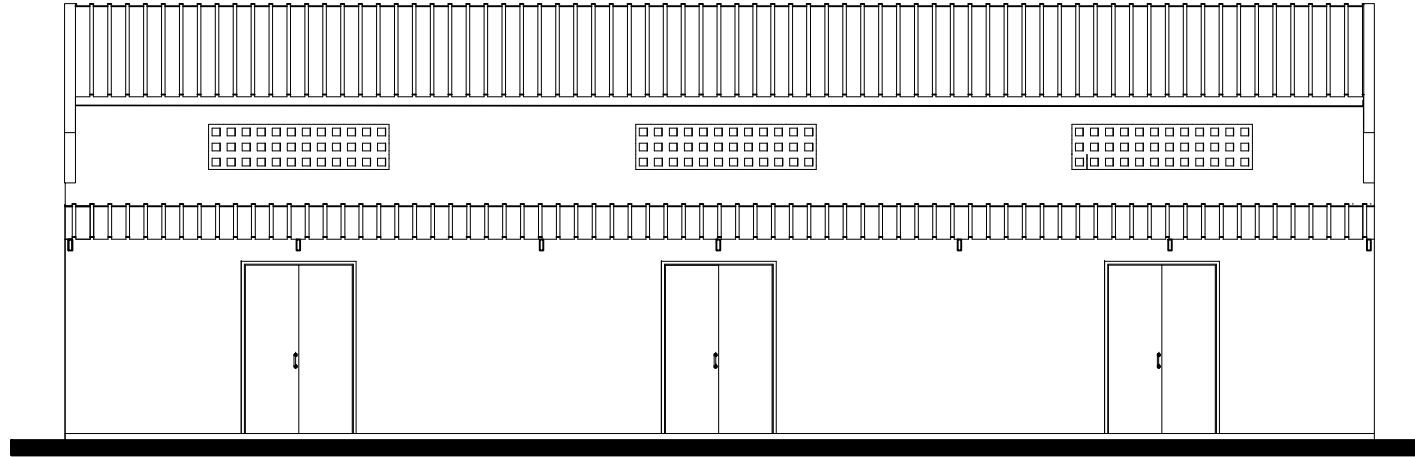
Vue en Plan



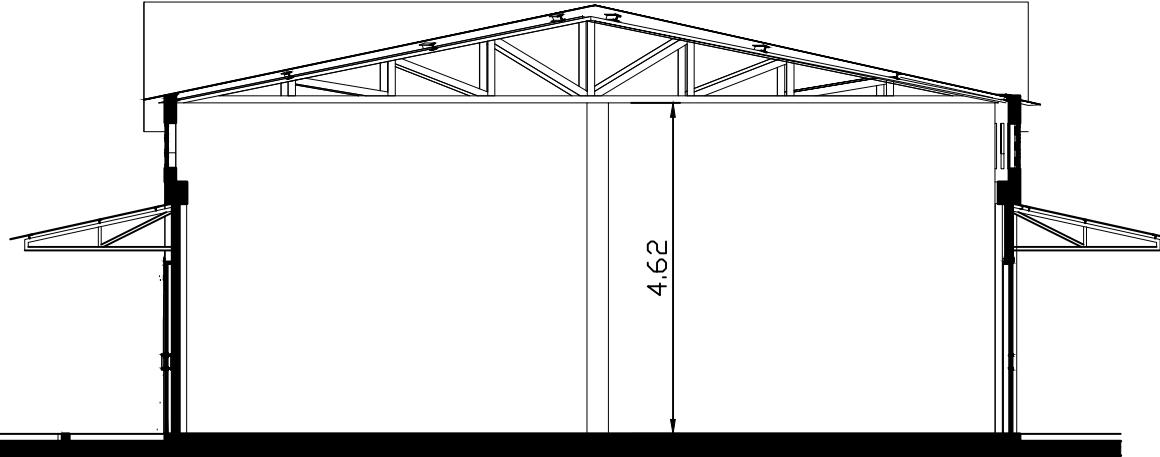
Façades Postérieure



Façades Latérales

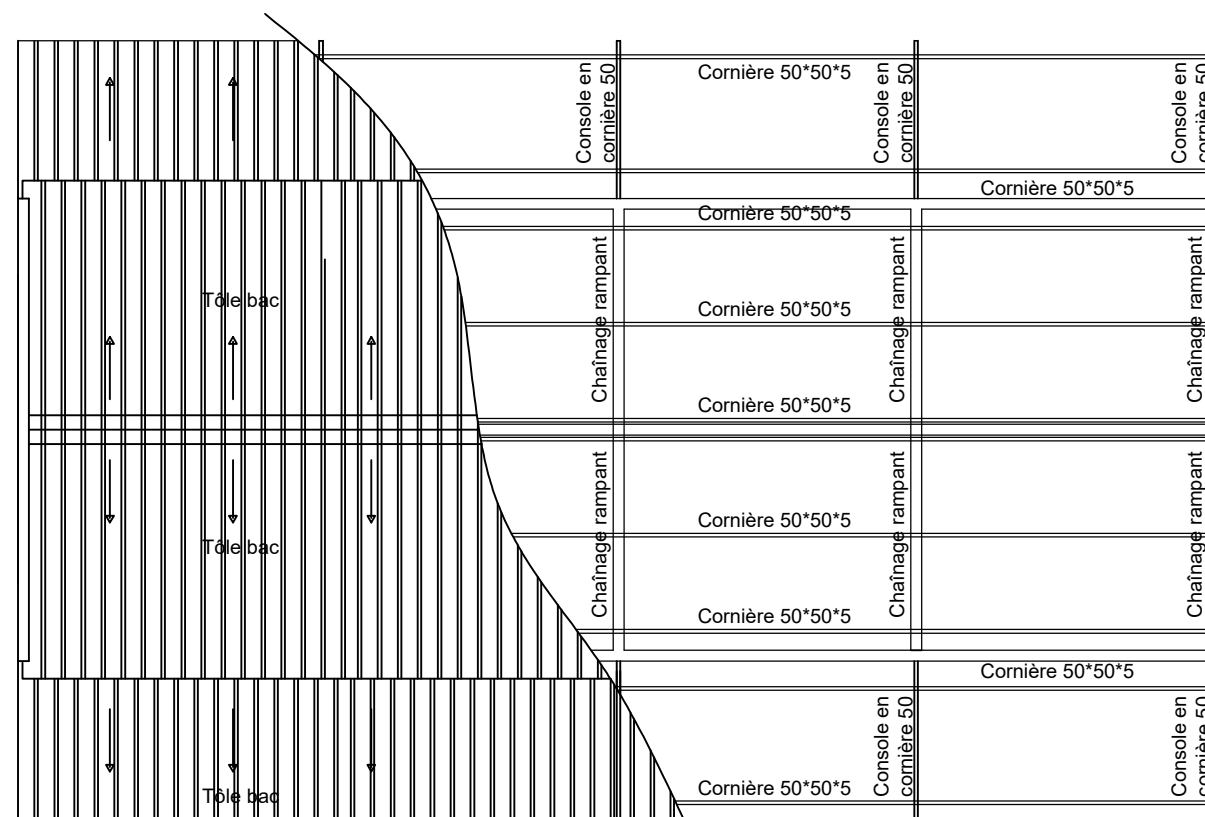


Façade Principale



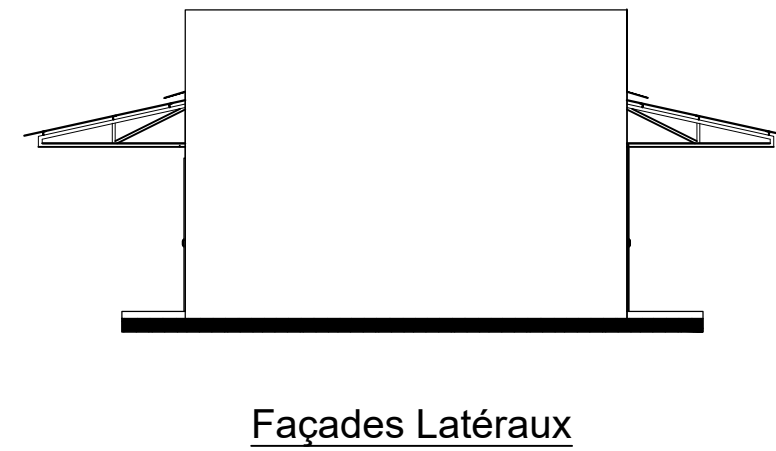
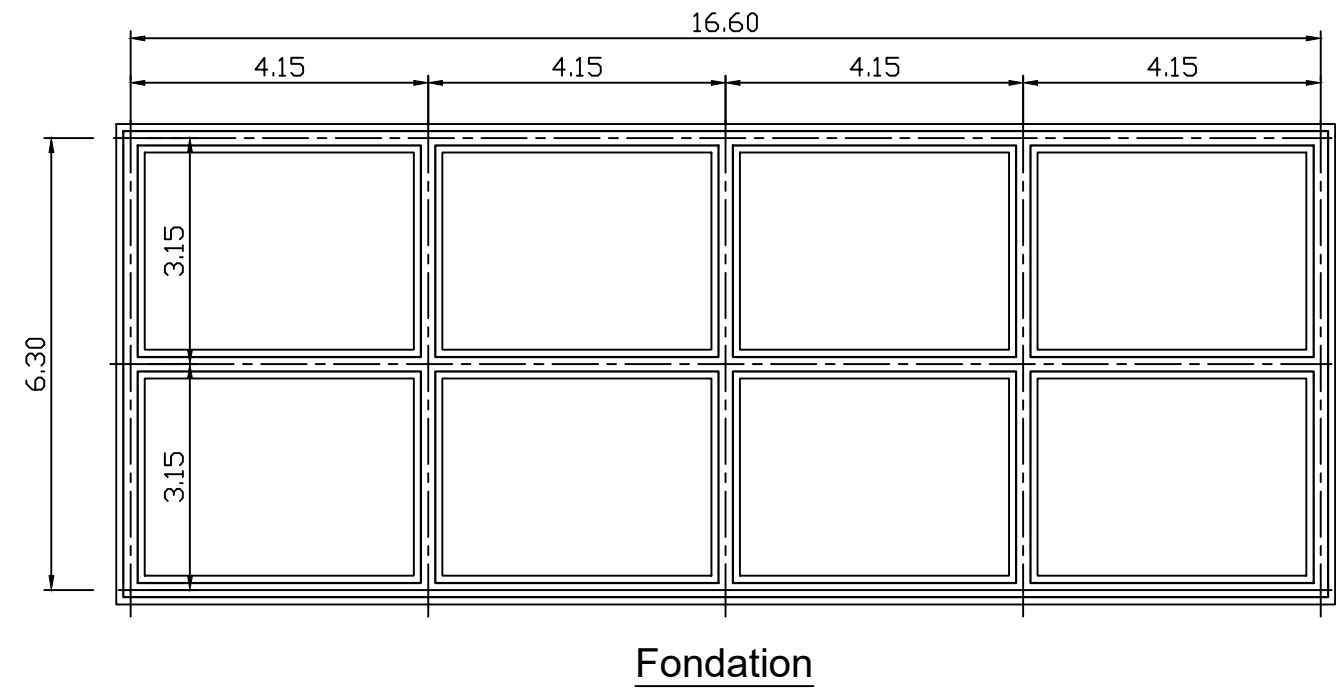
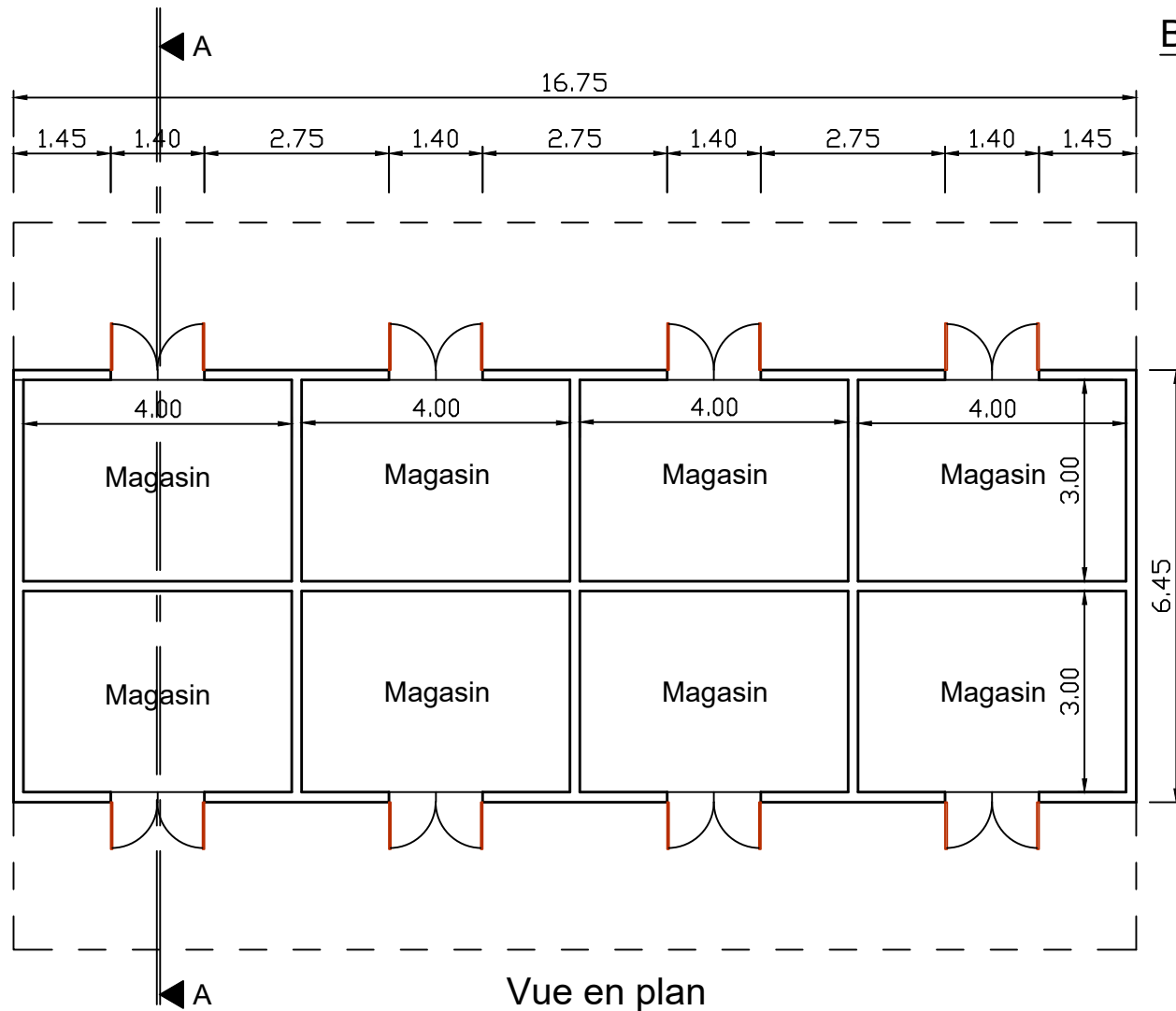
Coupe AA

PORT DE PECHE DE MOPTI - BLOC DE 8 MAGASINS



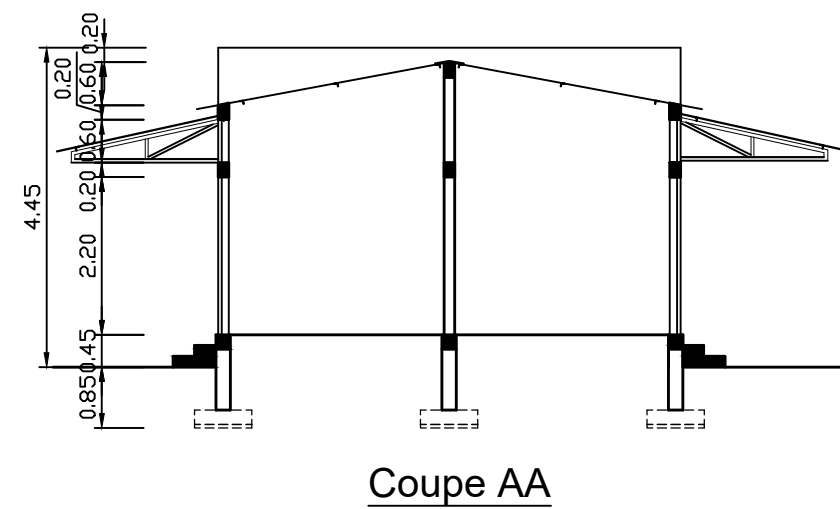
Plan de toiture

Bloc de (08) Magasins

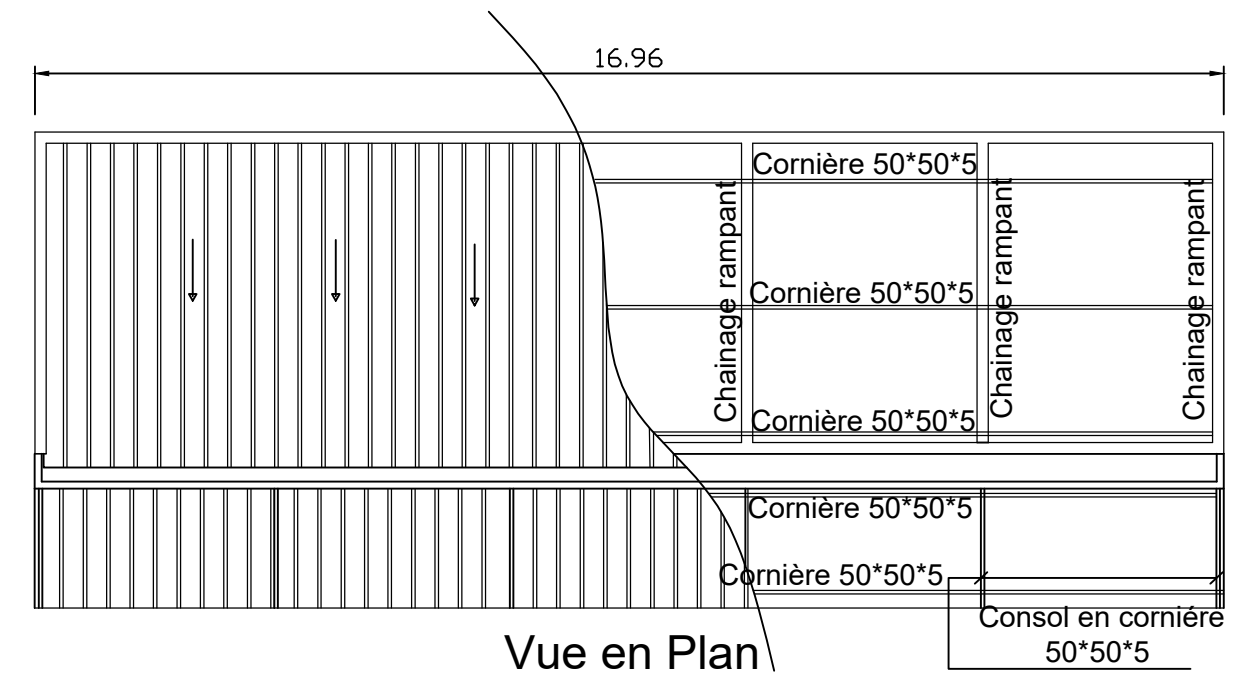
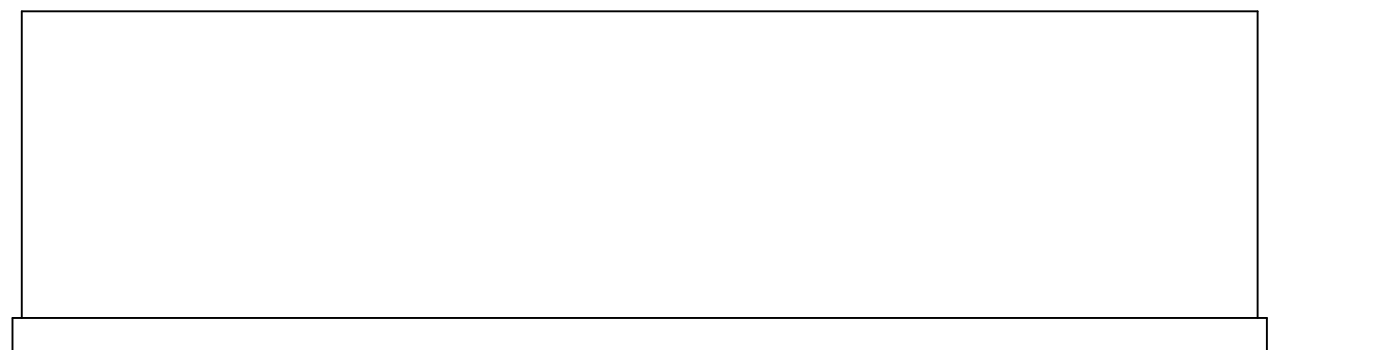
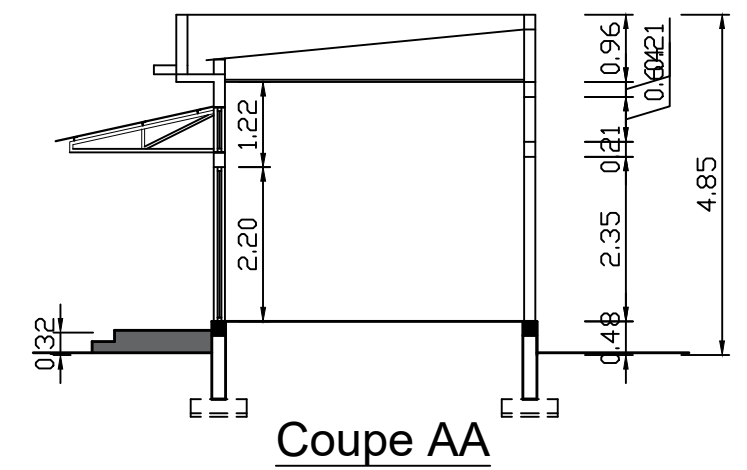
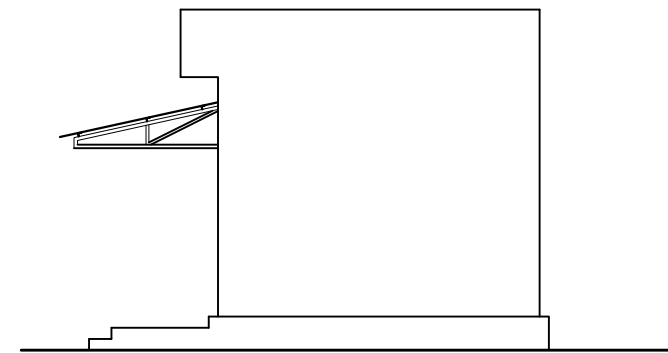
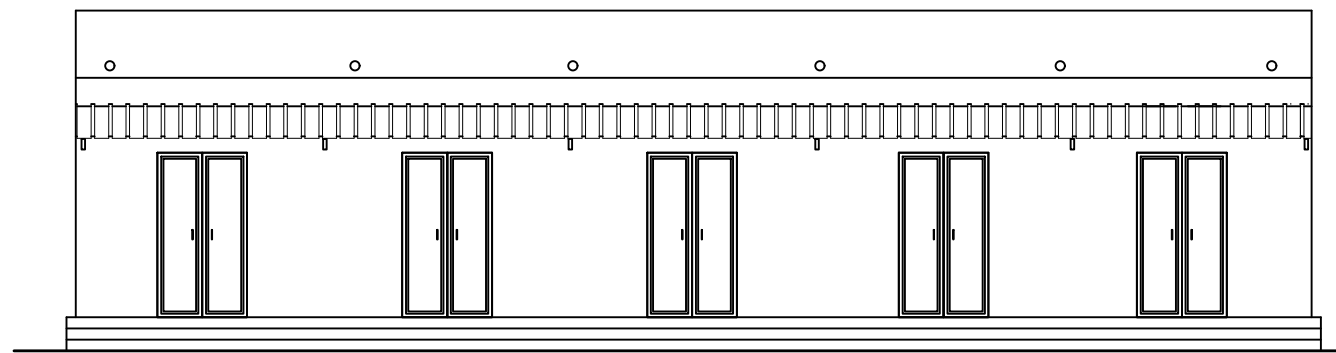
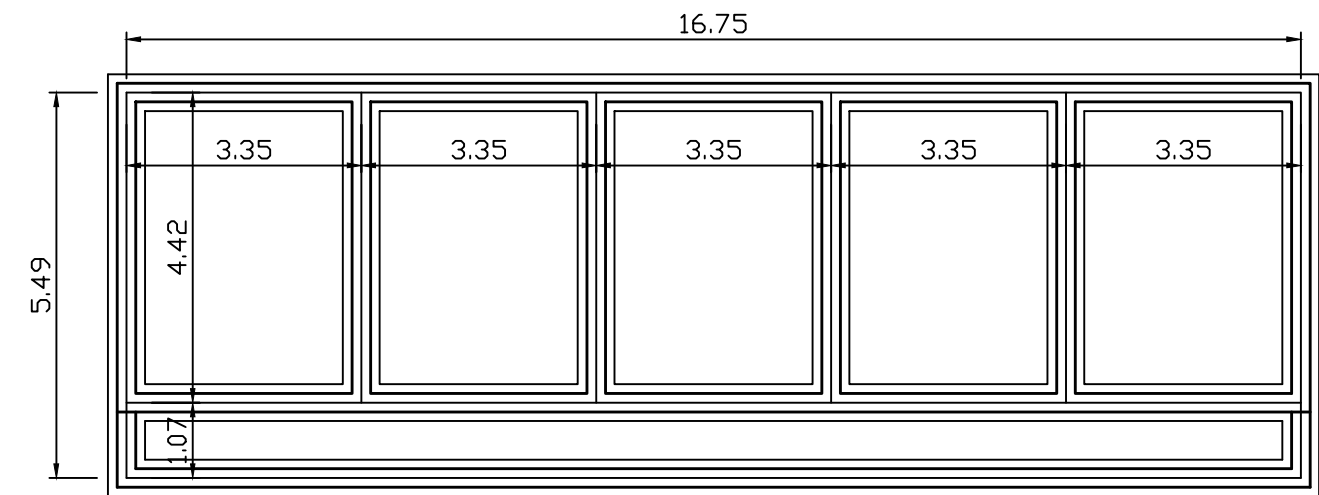
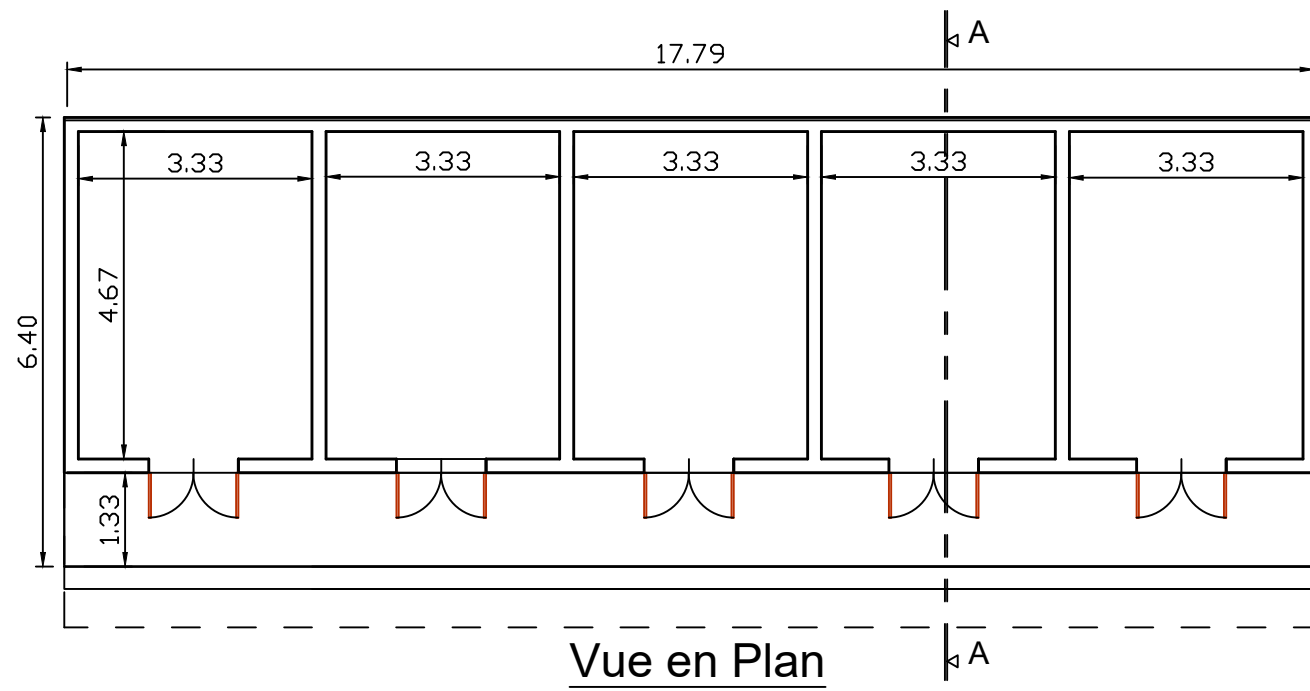


Façade Principale

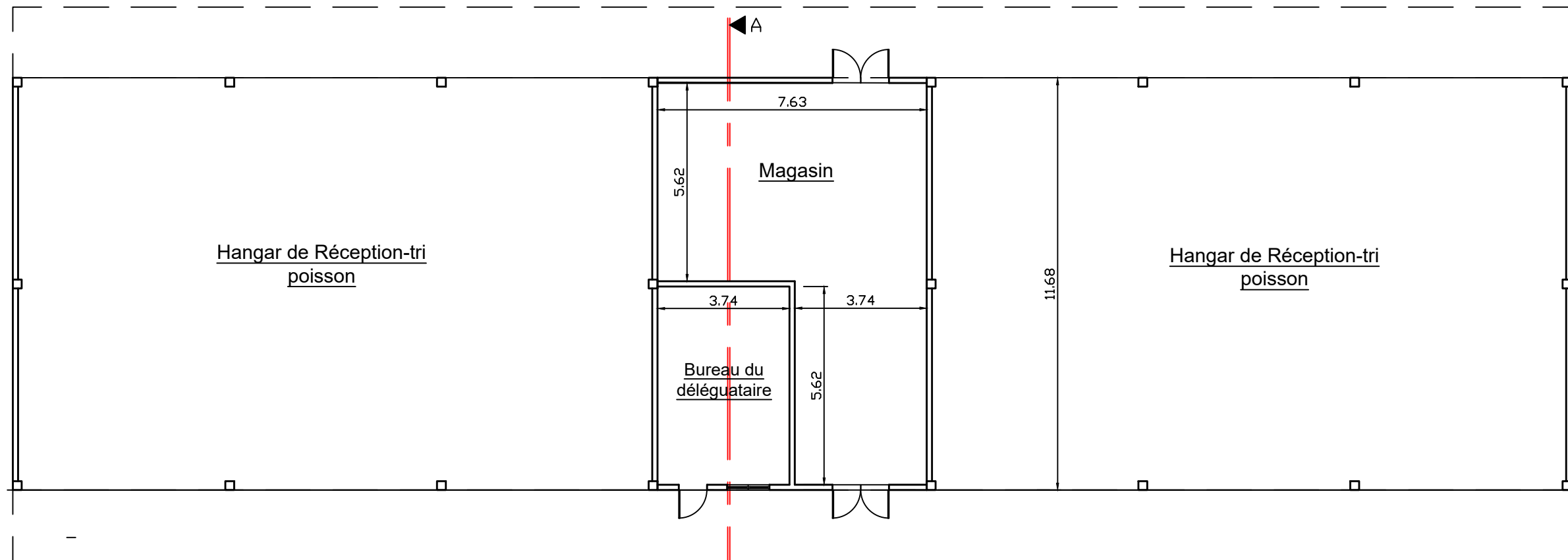
Façade Postérieure



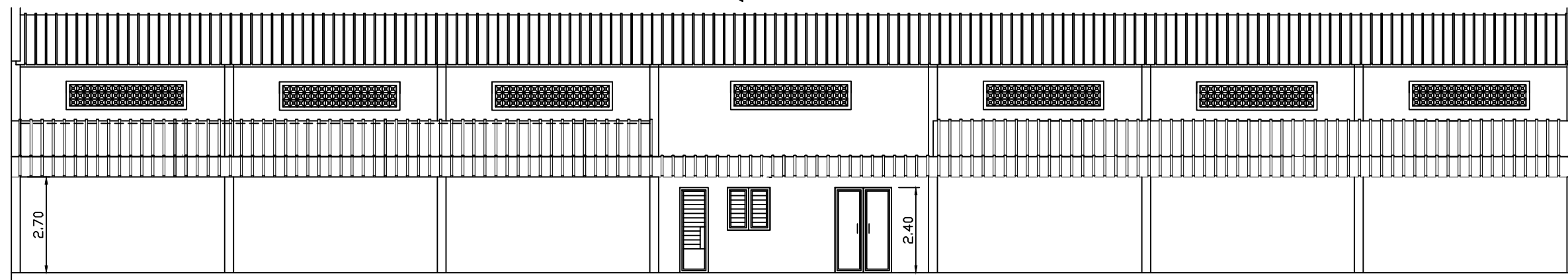
BLOC DE CINQ (5) MAGASINS



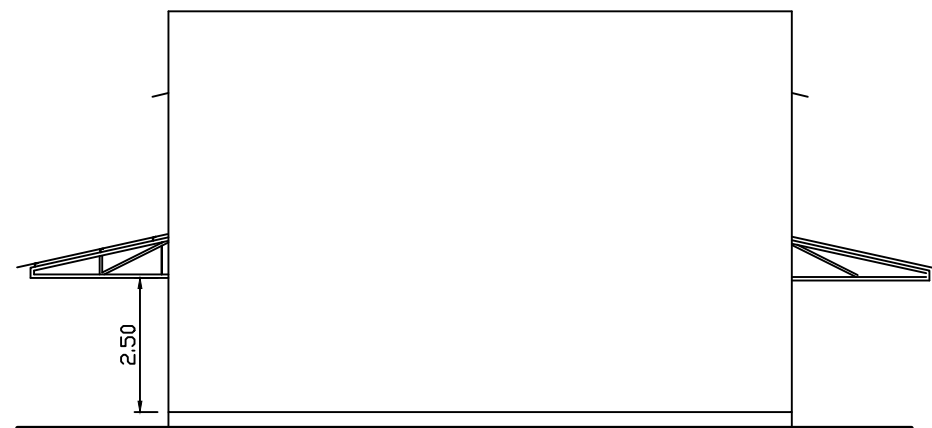
BUREAU POUR DELEGATAIRE DU QUAI D'ACCOSTAGE ET MAGASIN POUR MATERIELS DES MAREYEURS



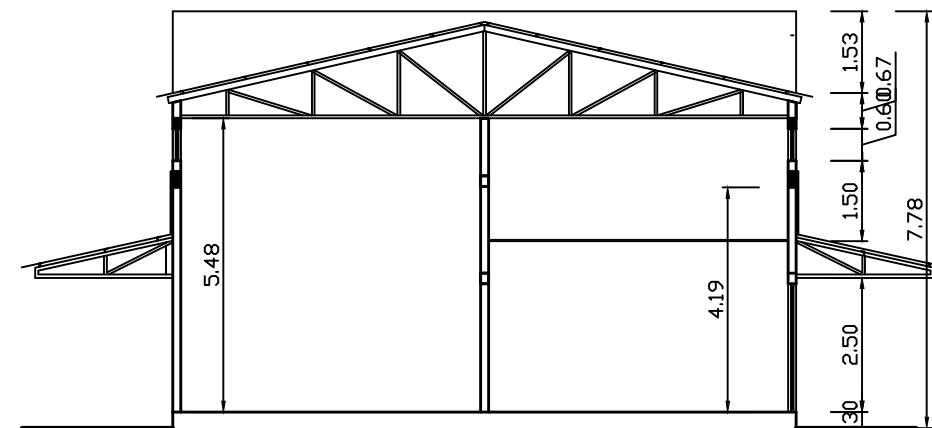
Vue en plan



Façade principale

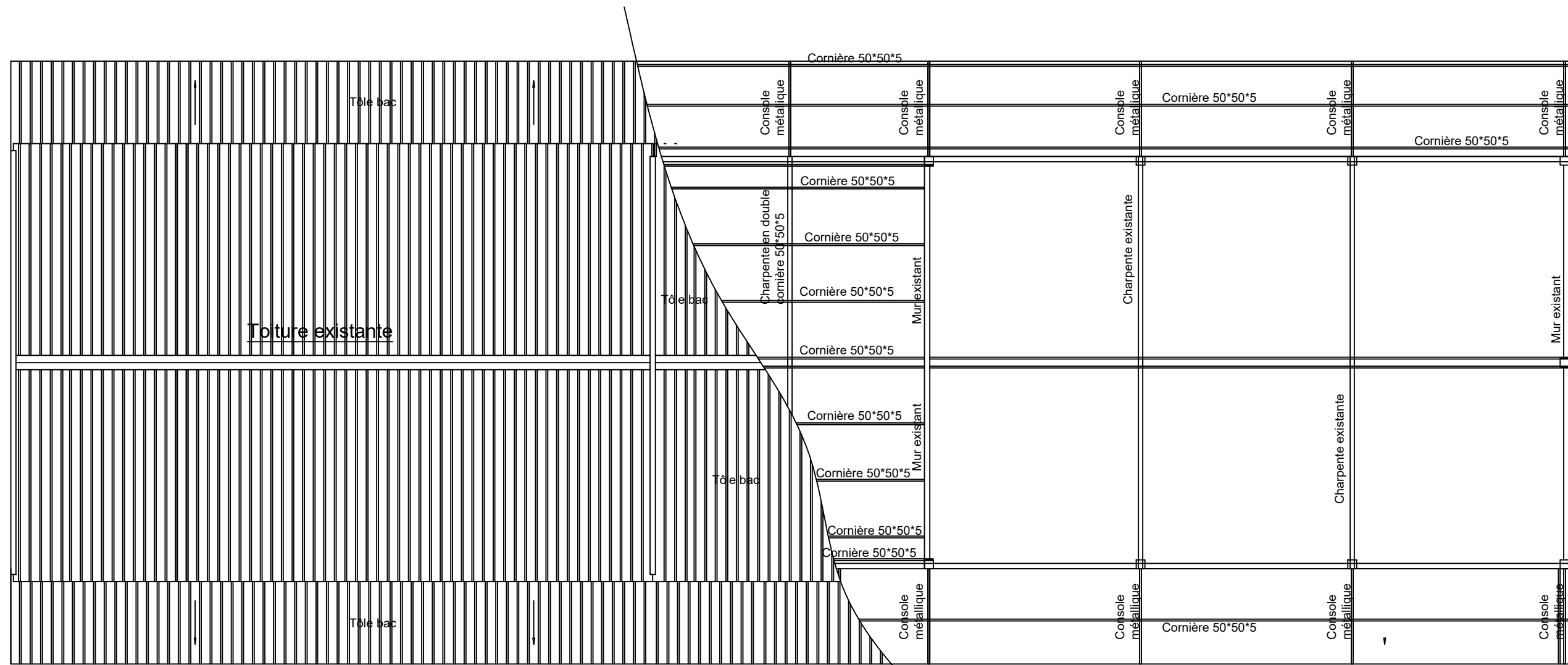


Façade Lat. Droite



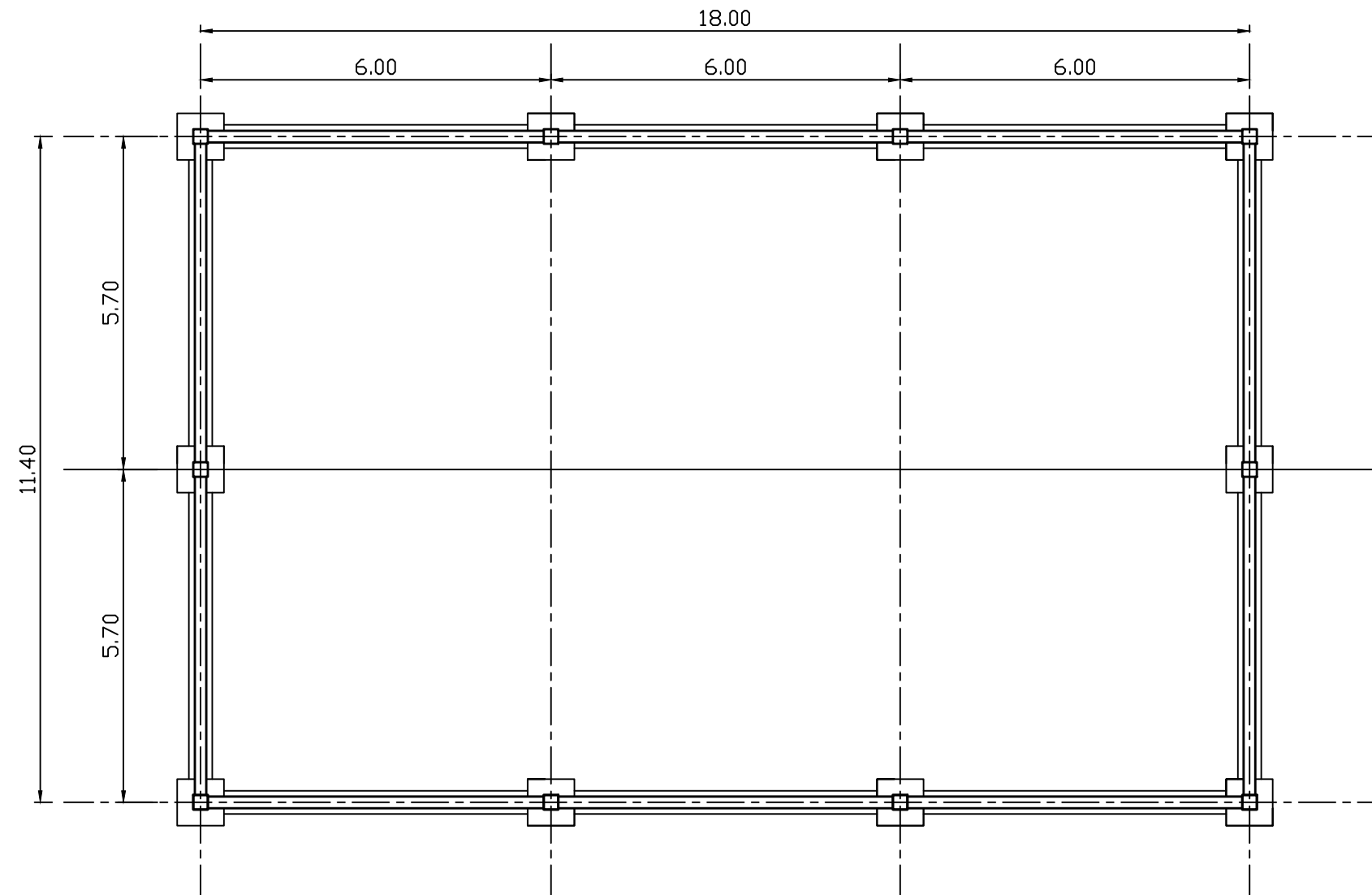
Coupe AA

BUREAU POUR DELEGATAIRE DU QUAI D'ACCOSTAGE ET MAGASIN POUR MATERIELS DES MAREYEURS



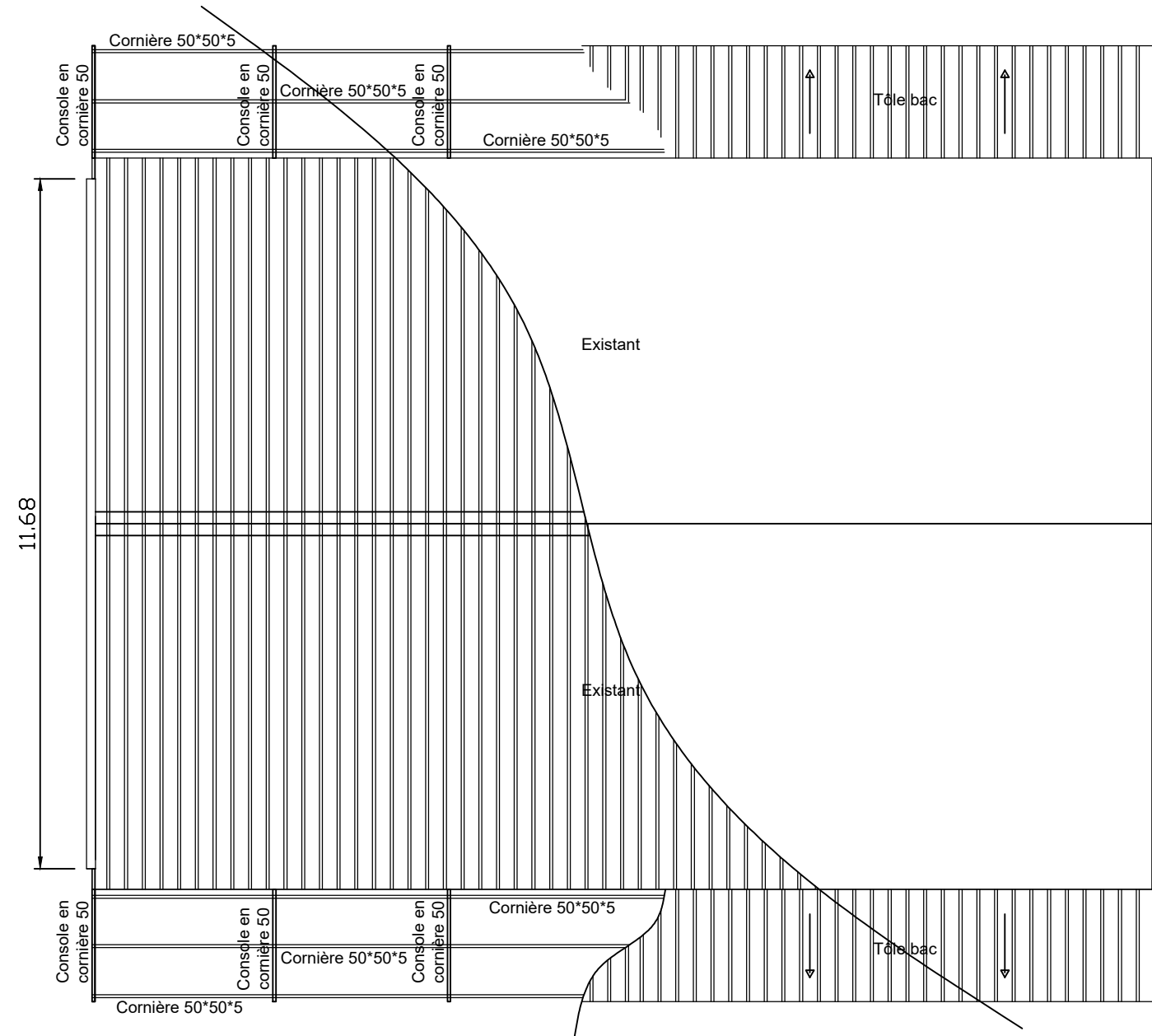
Plan de toiture

NOUVEAU LOCAL DE RAMENDAGE DE FILETS



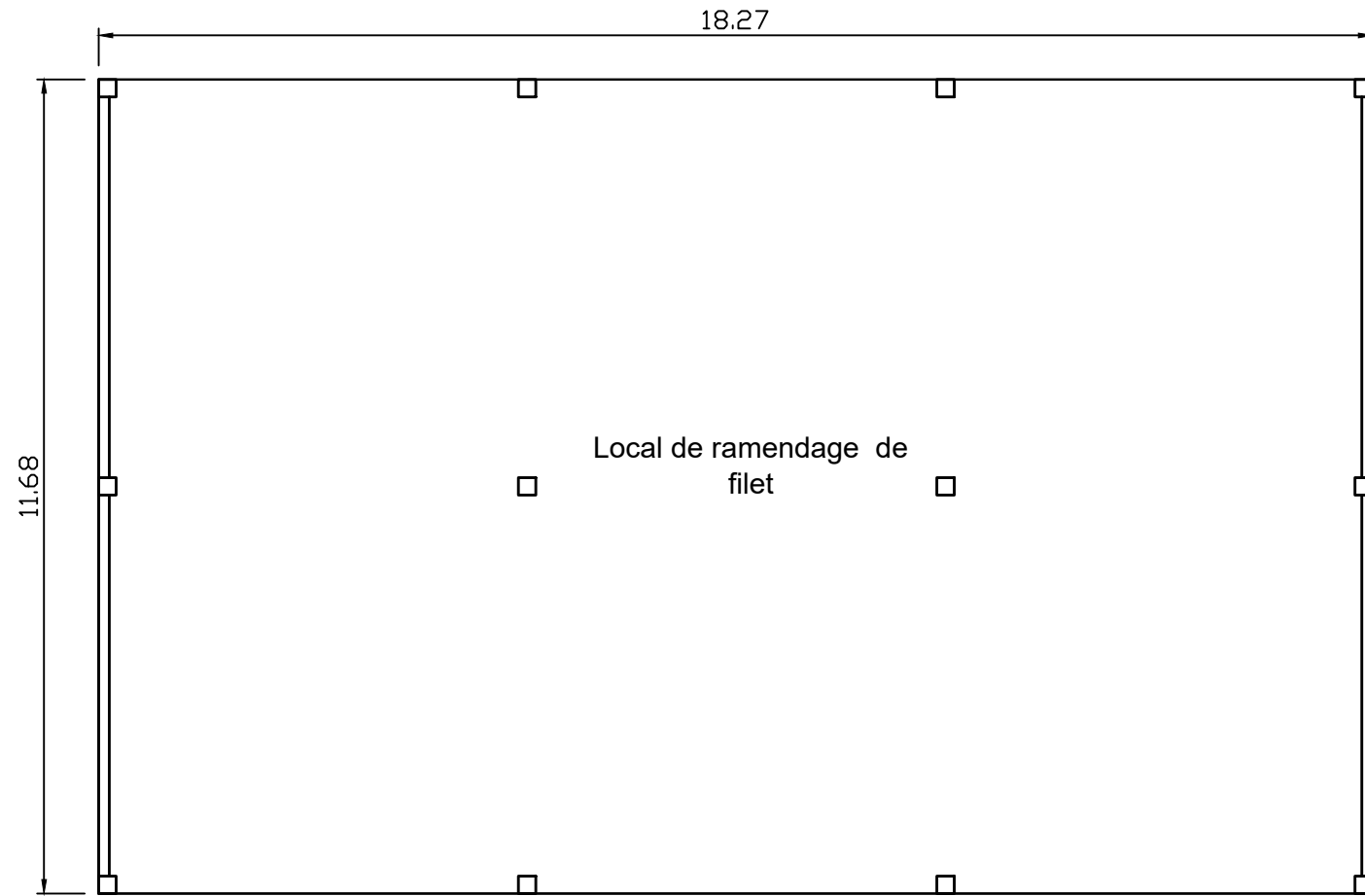
Fondation

NOUVEAU LOCAL DE RAMENDAGE DE FILETS

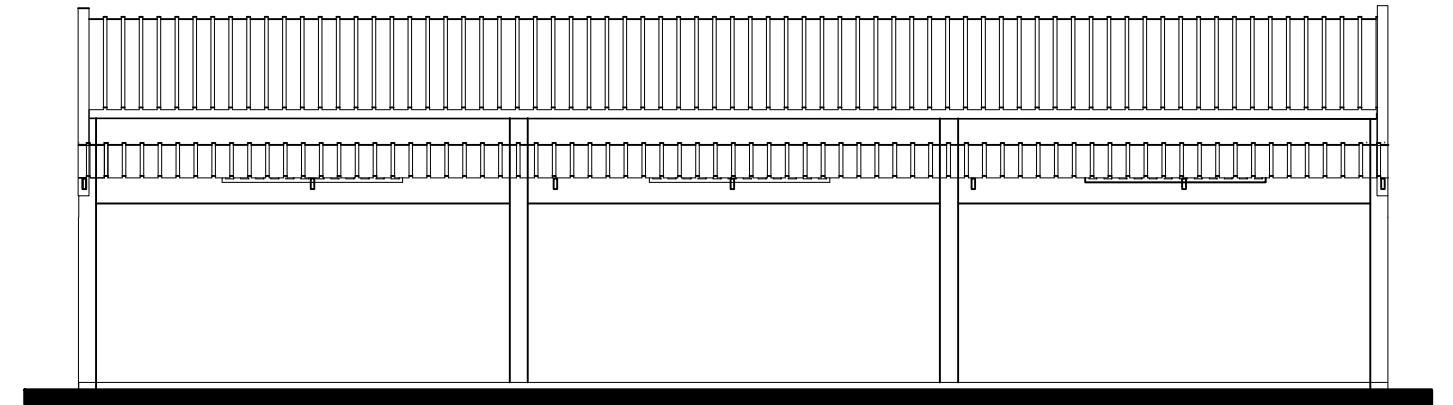


Plan de toiture

NOUVEAU LOCAL DE RAMENDAGE DE FILETS



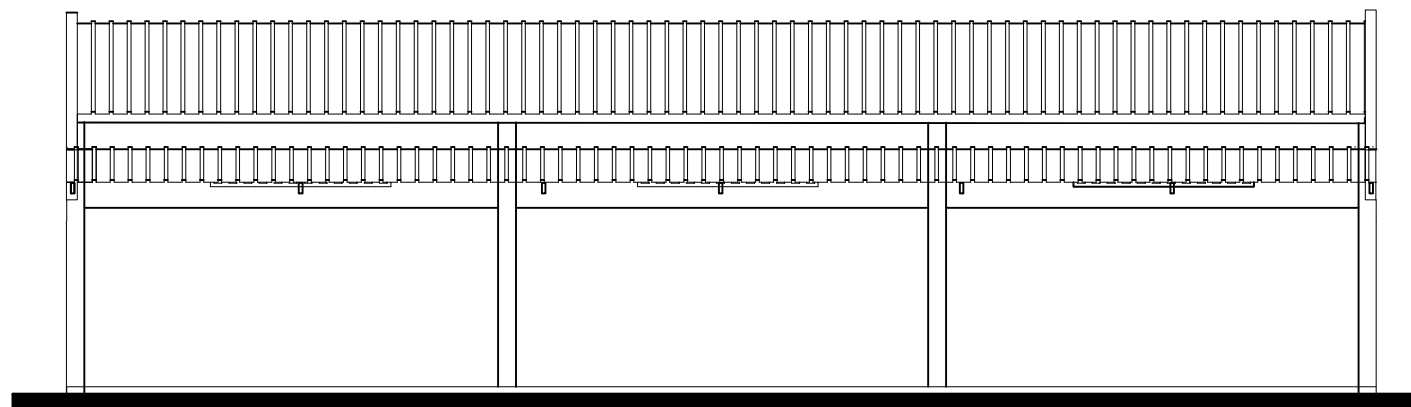
Vue en Plan



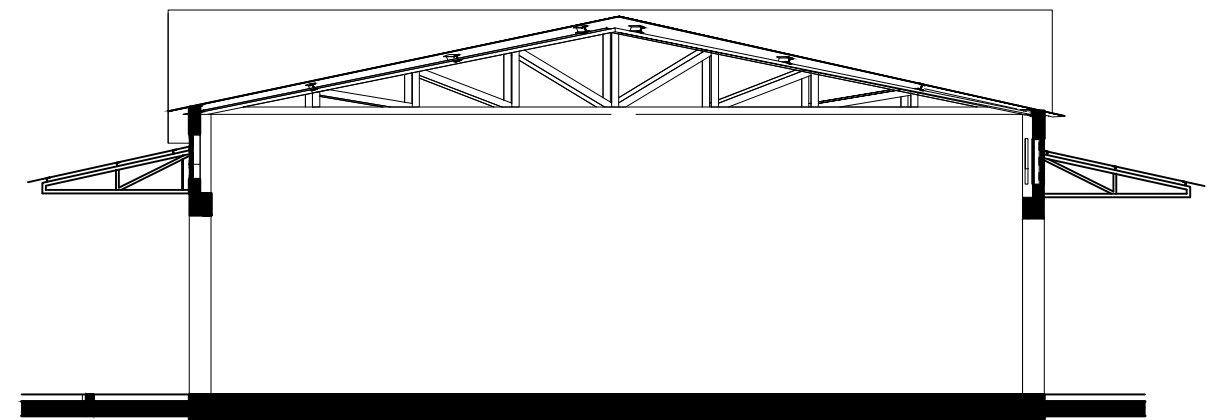
Façades Postérieure



Façades Latéraux

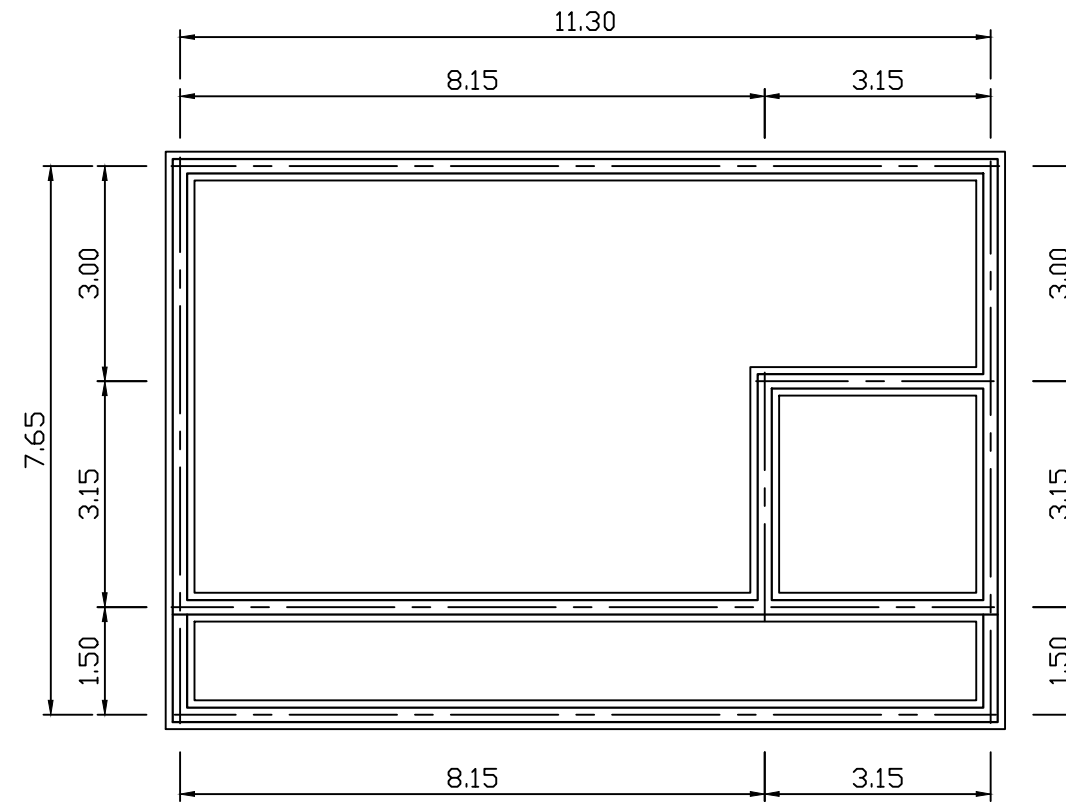


Façade Principale

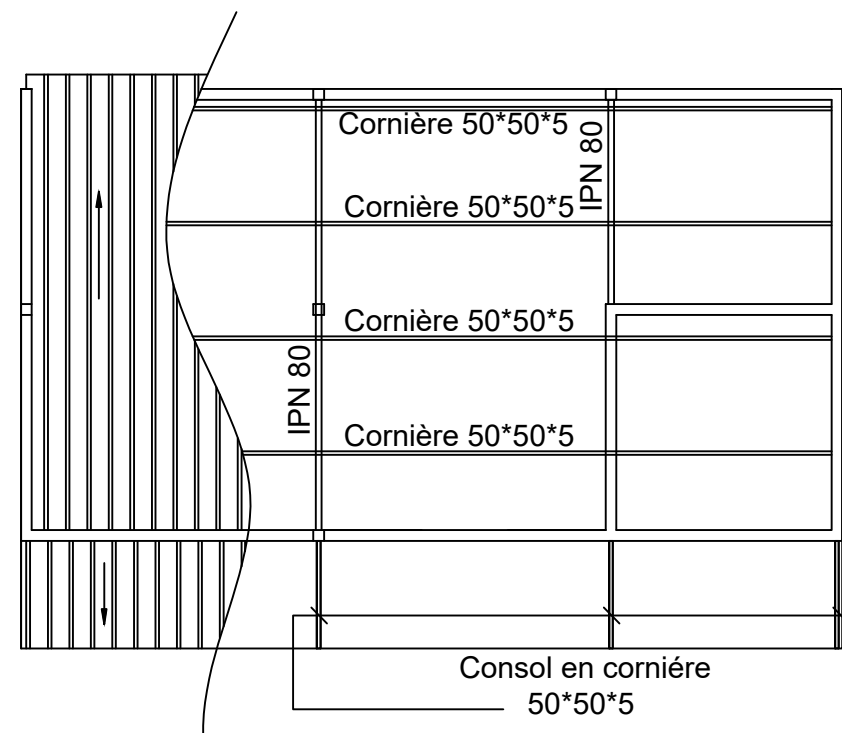


Coupe AA

LOCAL POUR TRANSFORMATRICES DE POISSON

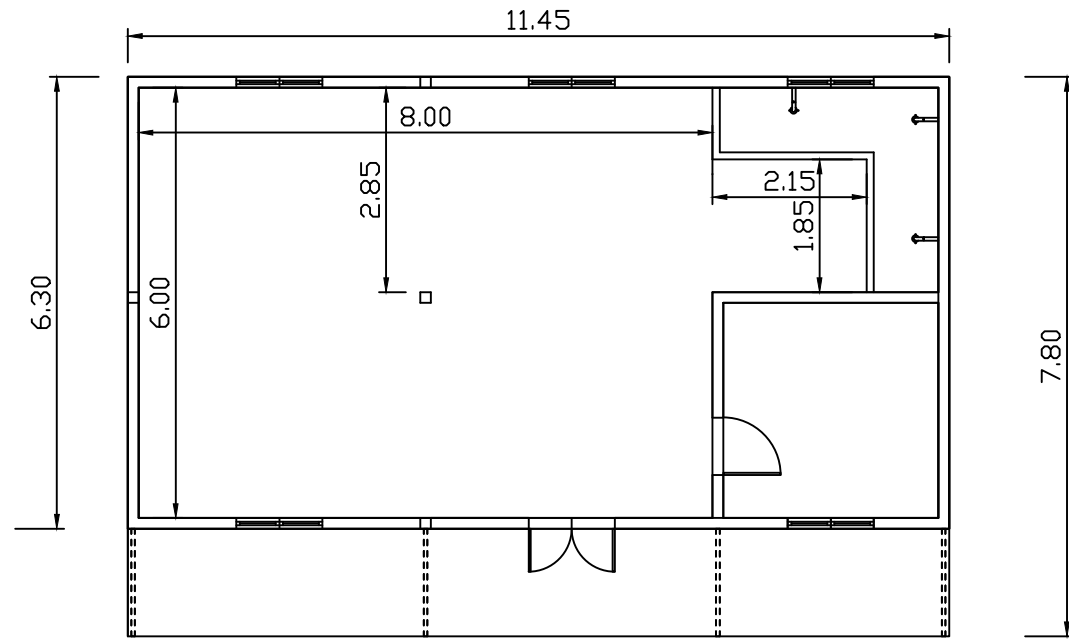


Fondation

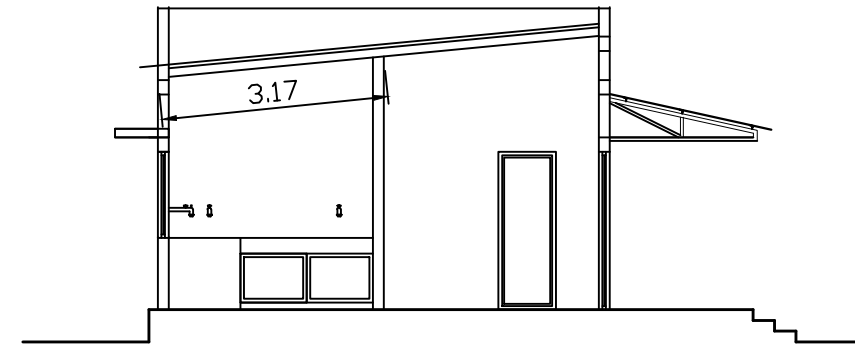


Plan de toiture

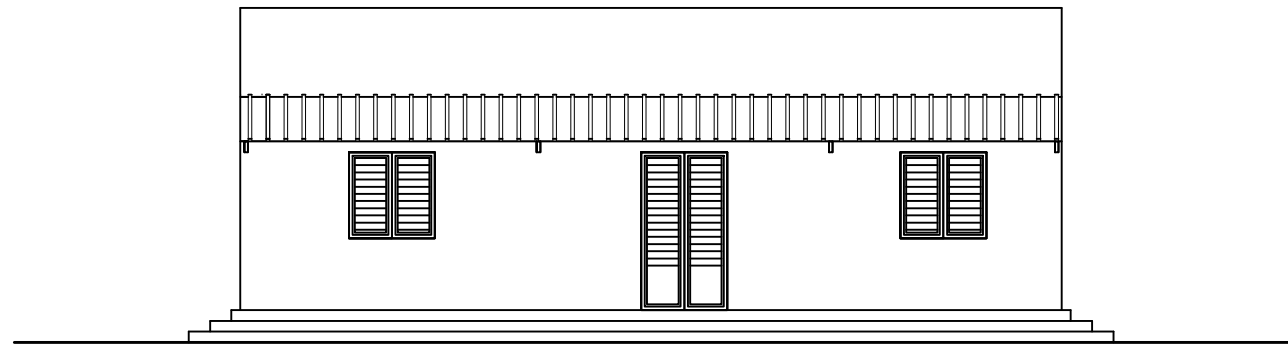
LOCAL POUR TRANSFORMATRICES DE POISSON



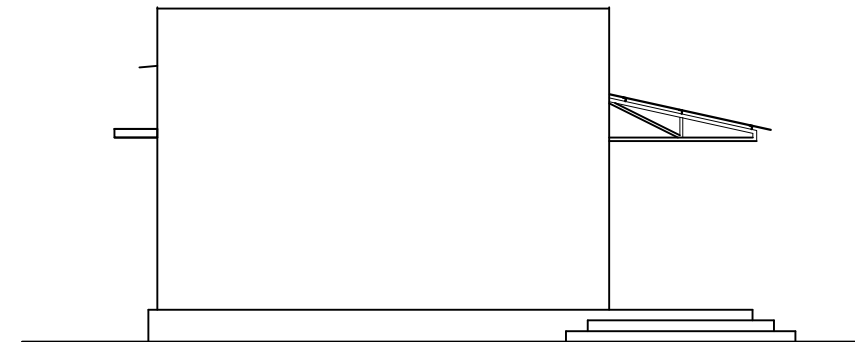
Vue en plan



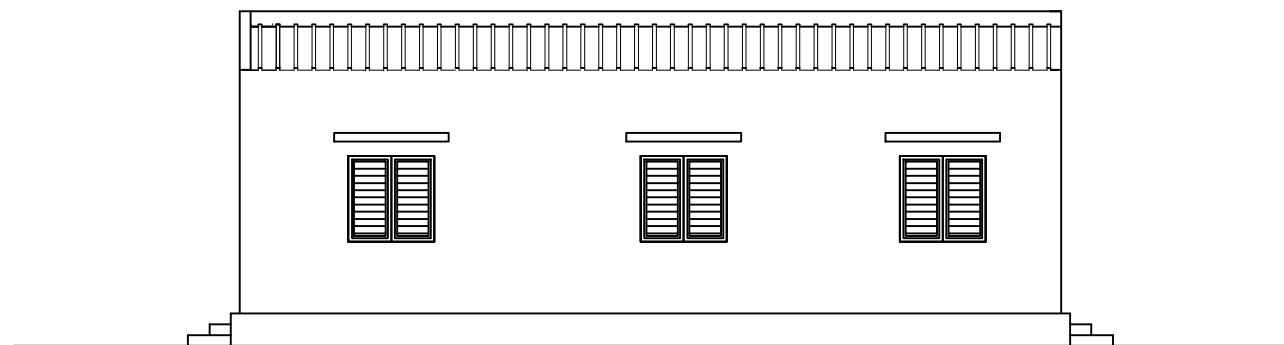
Coupe AA



Façade Principale

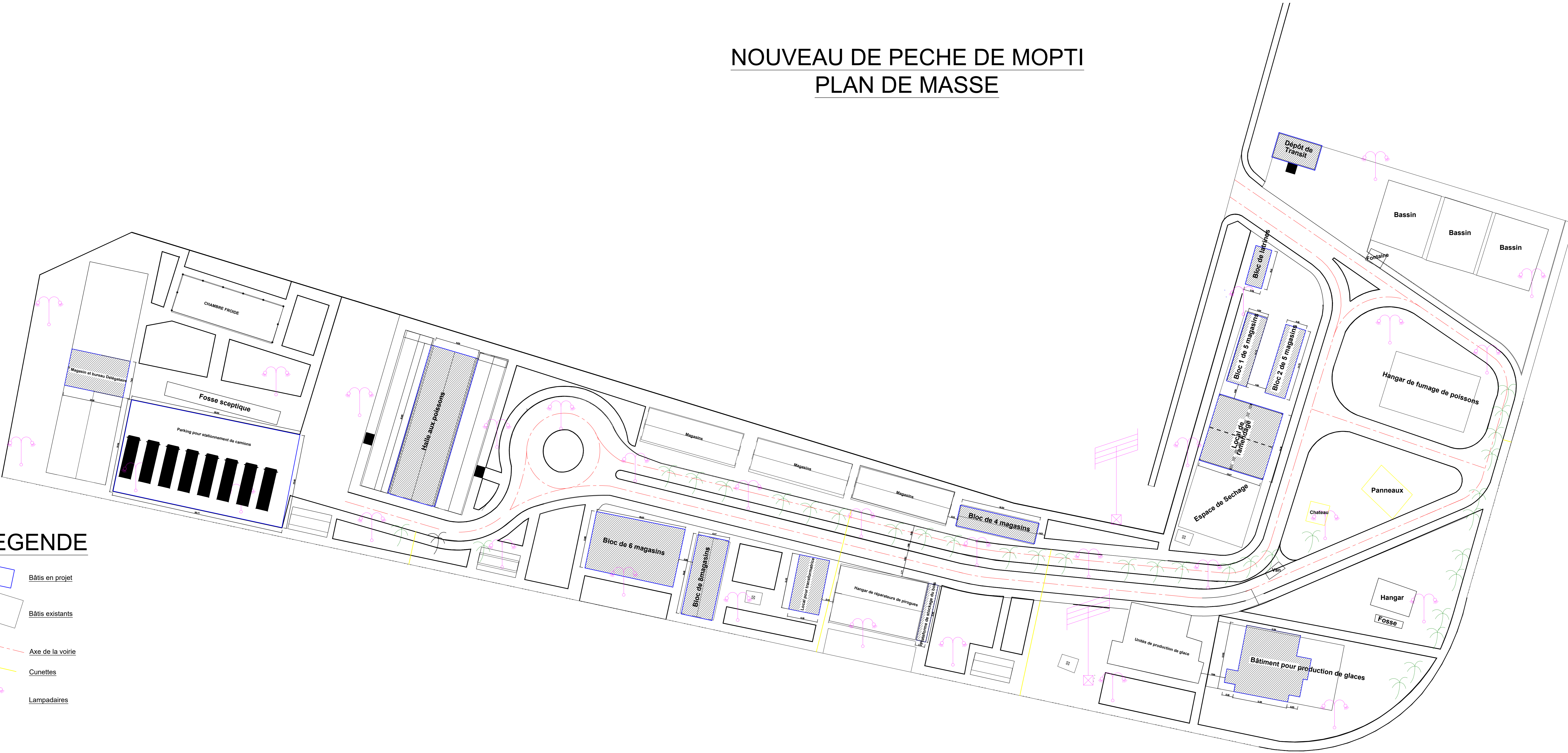


Façade Lat. Gauche



Façade Postérieure

NOUVEAU DE PECHE DE MOPTI
PLAN DE MASSE



LEGENDE

- Bâti en projet
- Bâti existants
- Axe de la voirie
- Cunettes
- Lampadaires