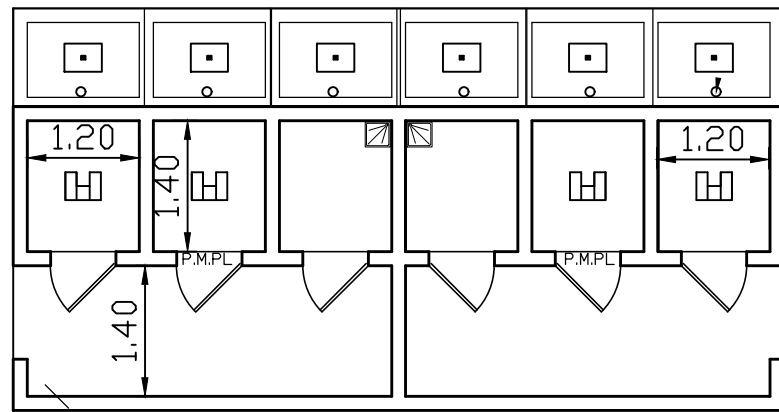
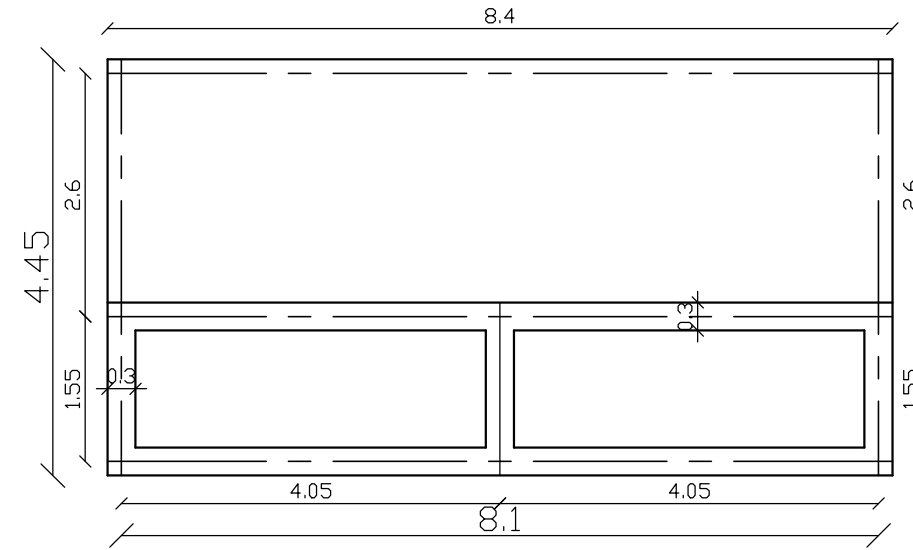


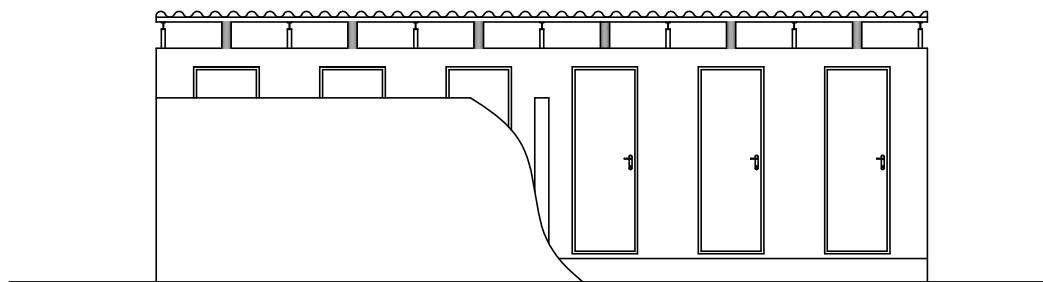
# BLOC DE SIX (6) LATRINES



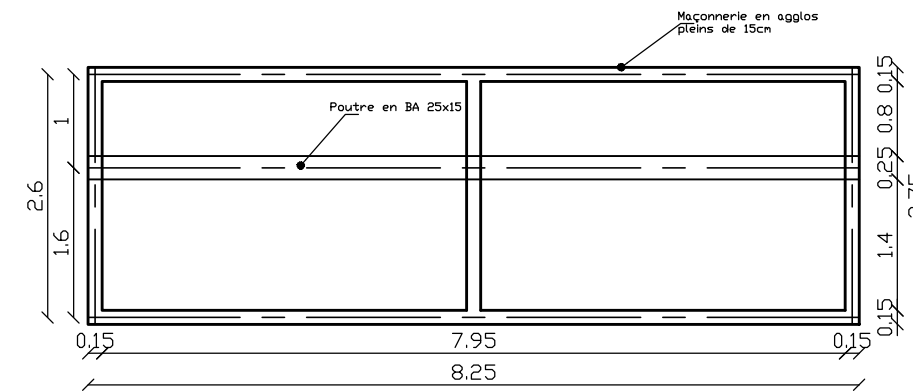
VUE EN PLAN



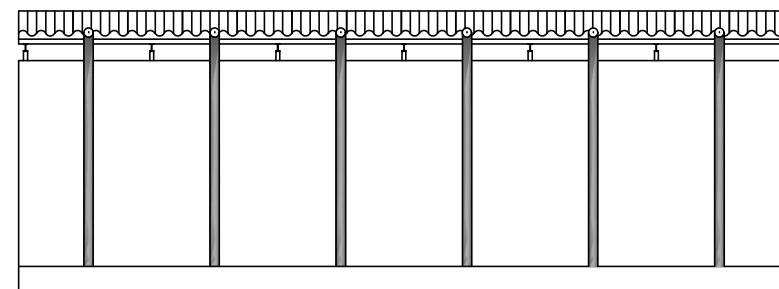
PLAN DE FONDATIONS



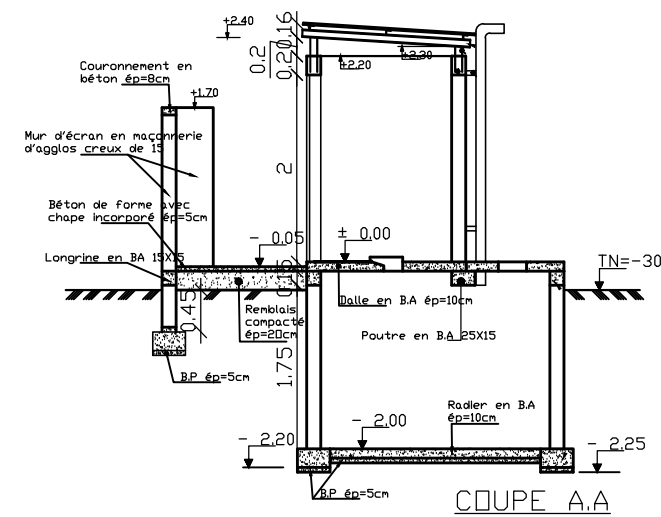
FACADE PRINCIPALE



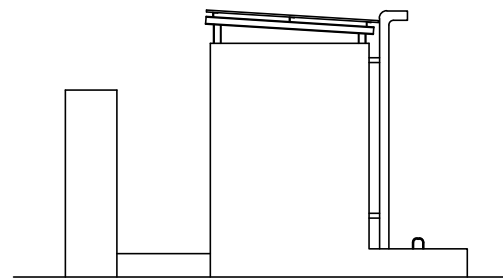
PLAN DE LA FOSSE



FACADE POSTERIEURE



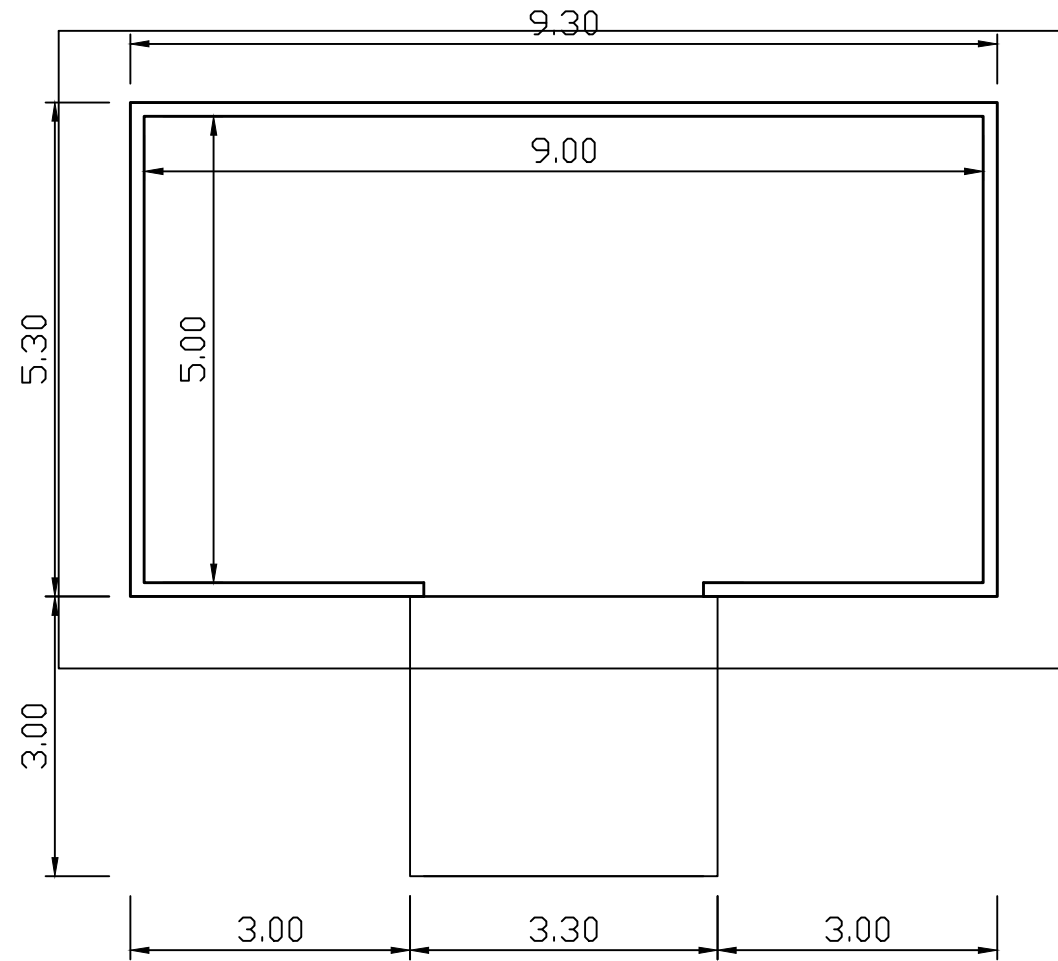
COUPE A.A



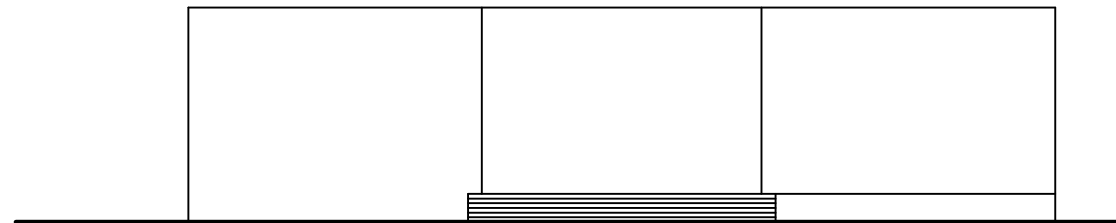
FACADE LATERALE DROITE

P.M.P.L:  
Porte Métallique Pleine

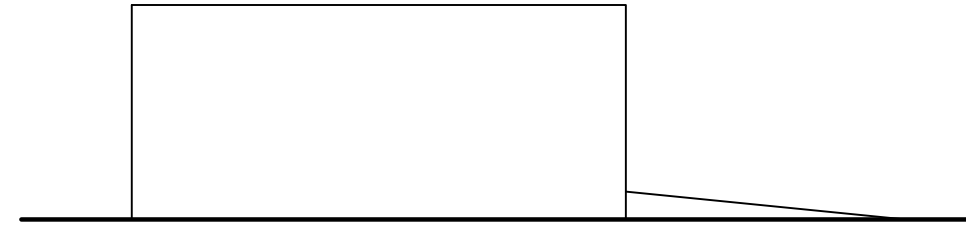
DEPOT DE TRANSIT DES DECHETS SOLIDES



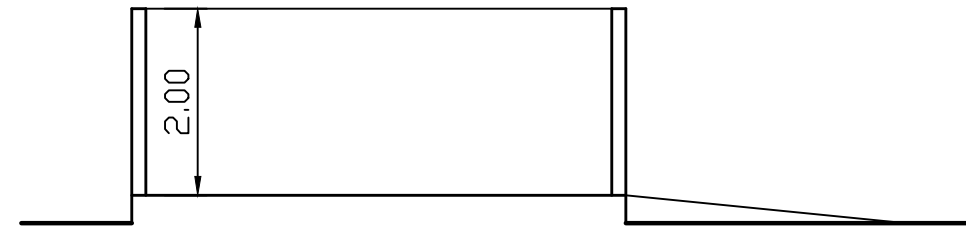
Vue en plan



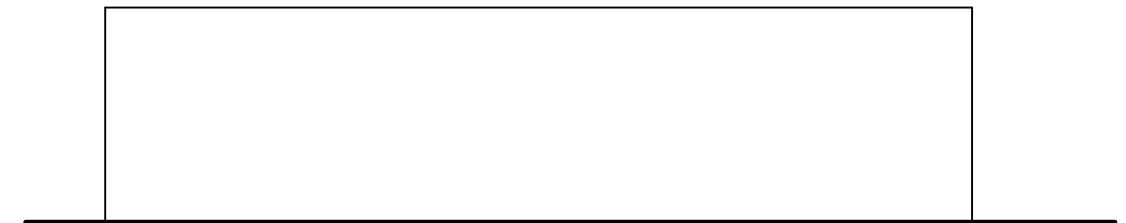
Façade principale



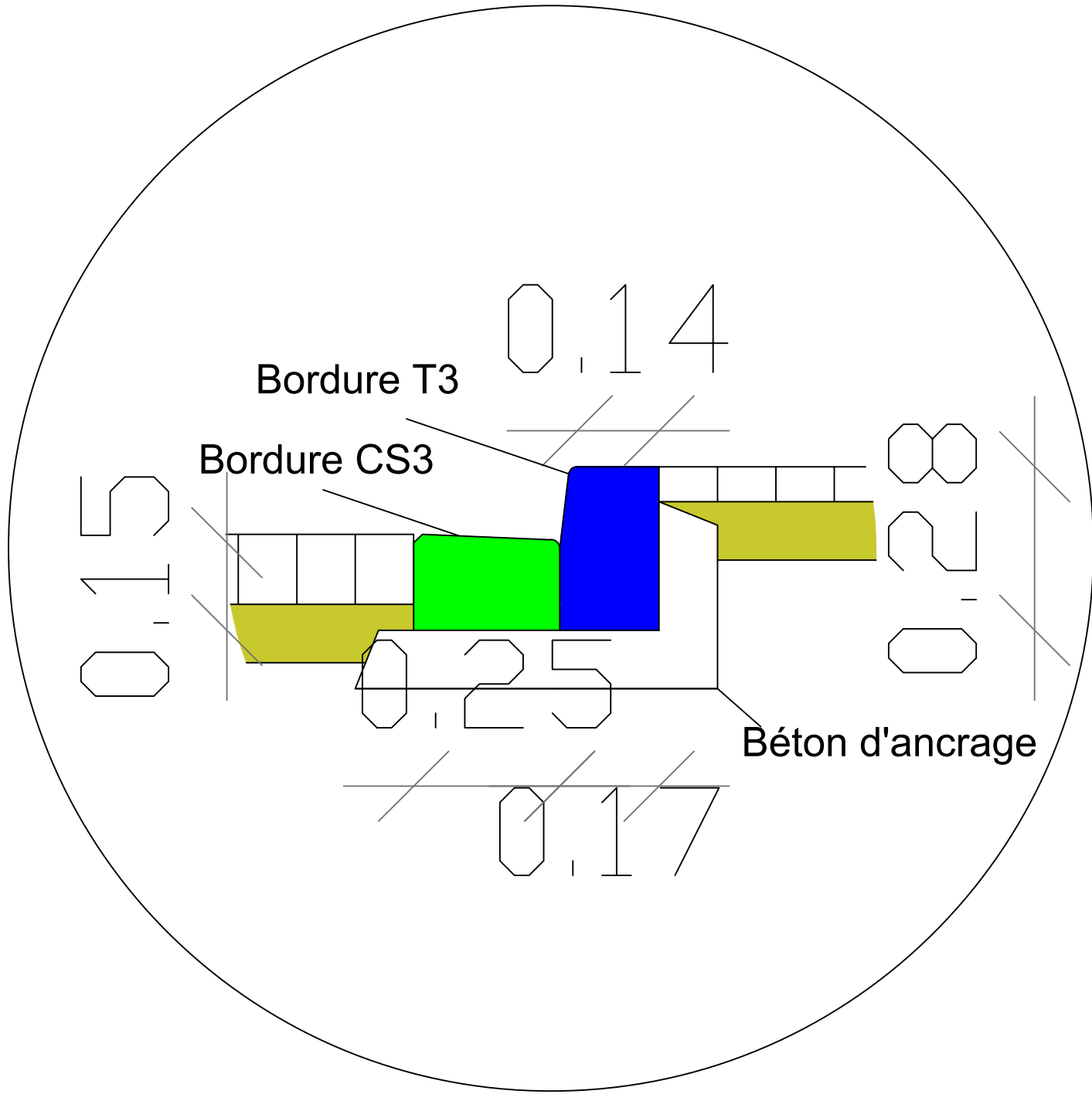
Façade lat. gauche



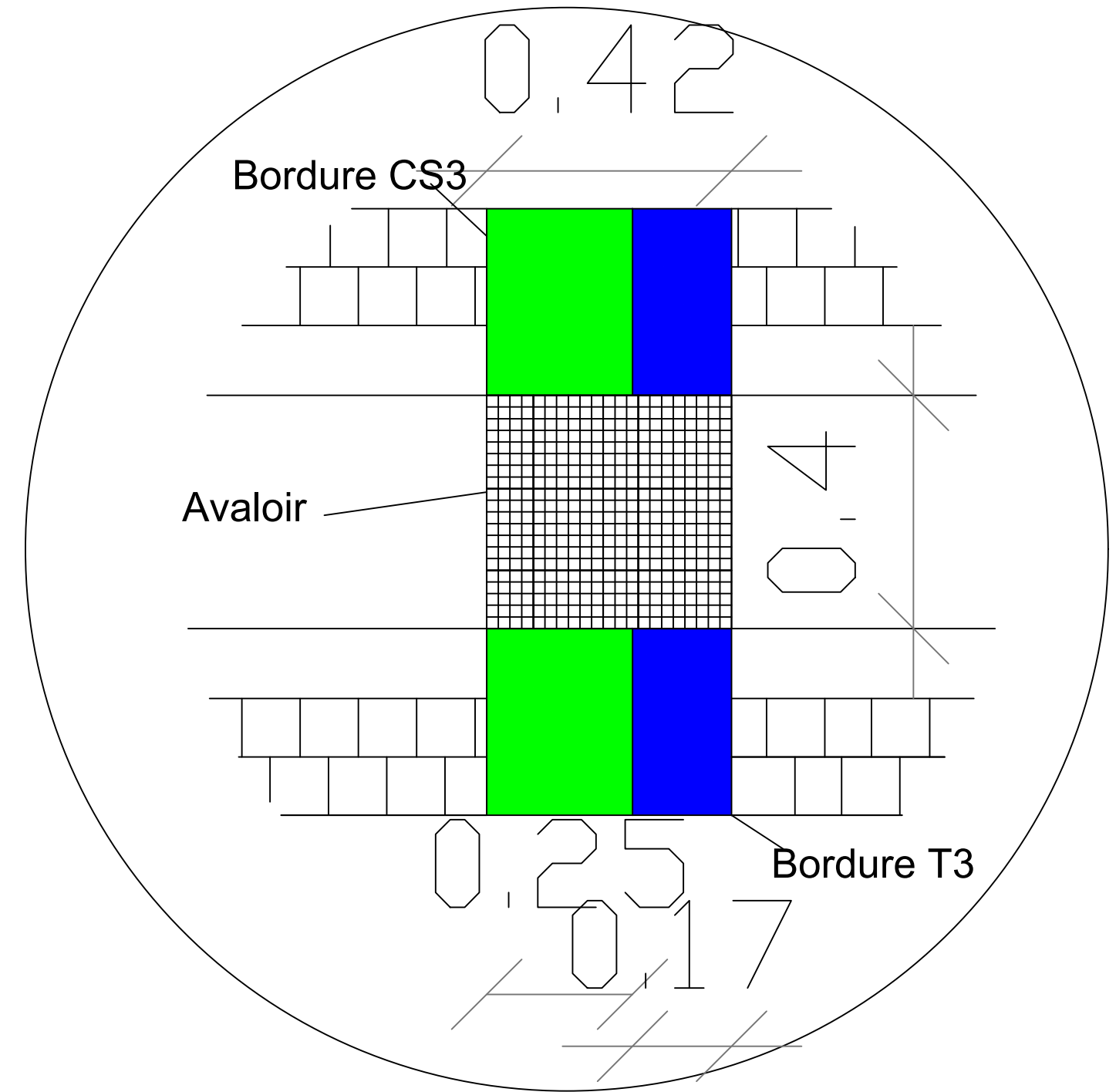
Coupe AA



Façade postérieure



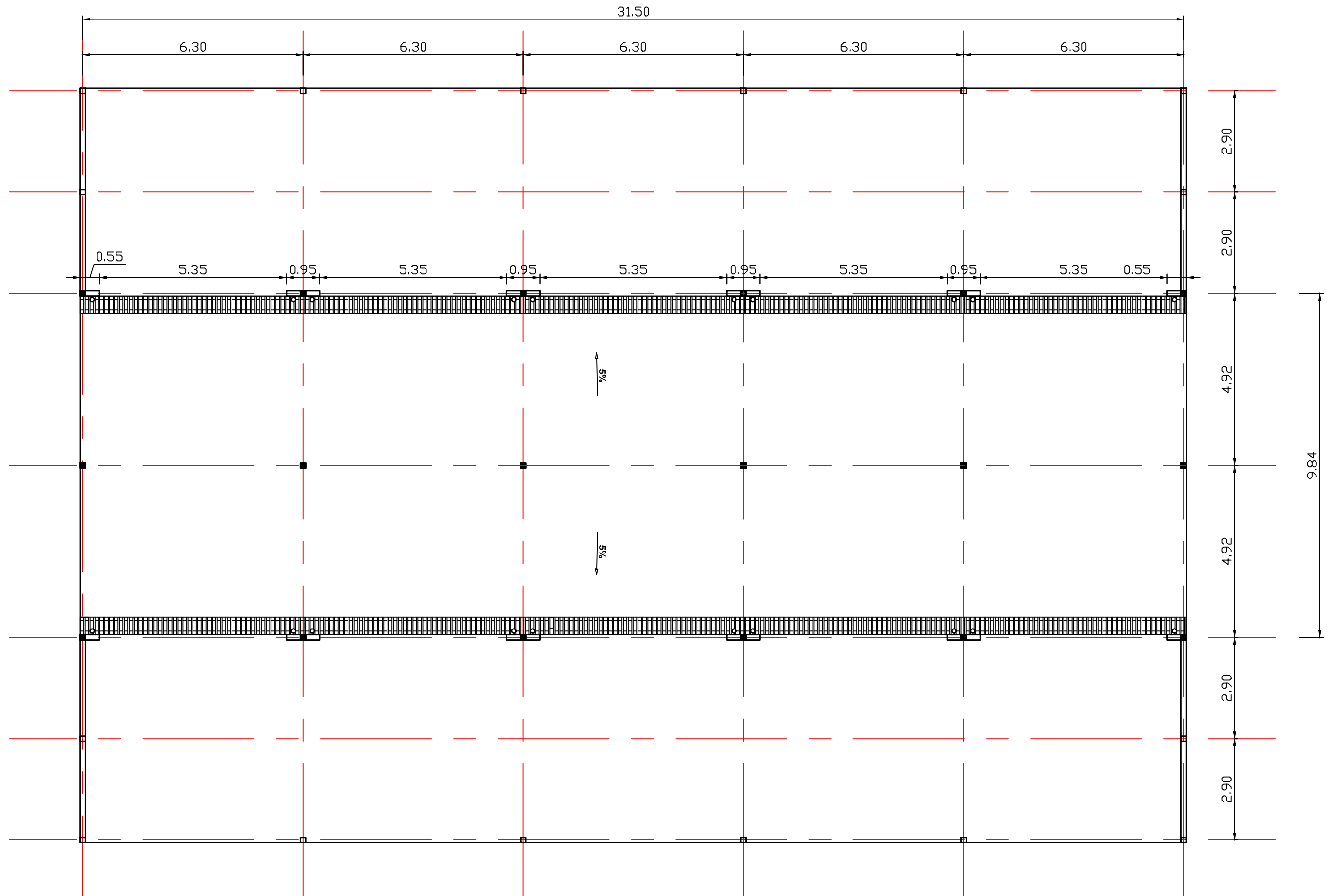
Détail 1: Caniveau en bordures CS3 et T3



Détail 2 : Avaloir en grillage métallique

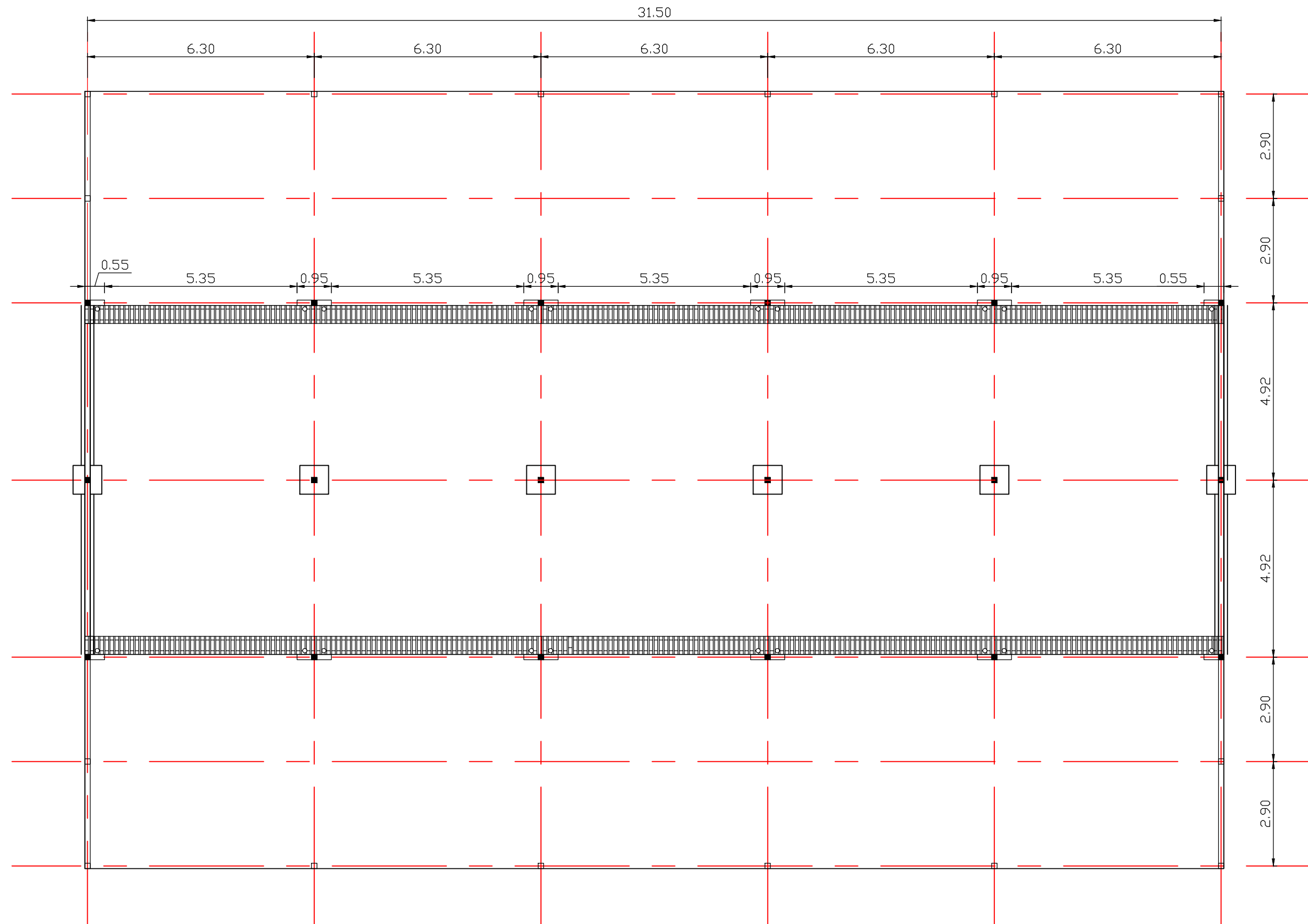
Echelle : 1/10

# HALLE AUX POISSONS



Vue en Plan

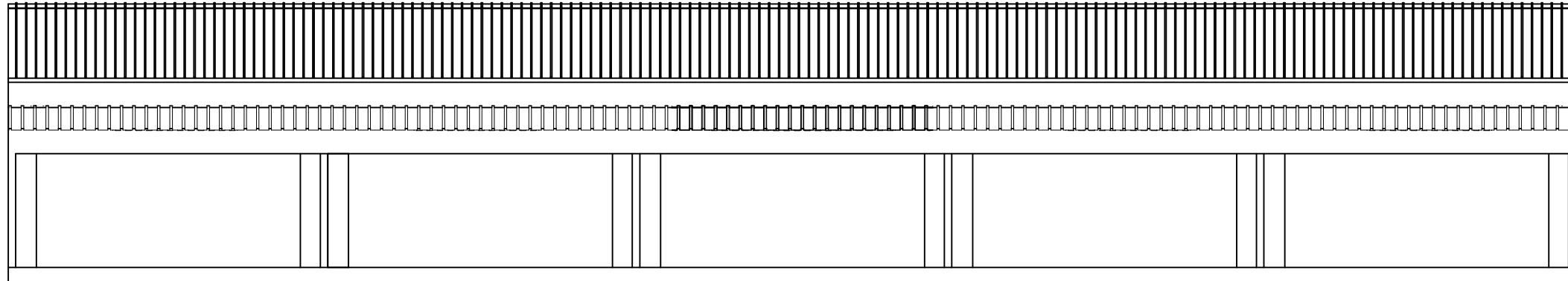
HALLE AUX POISSONS



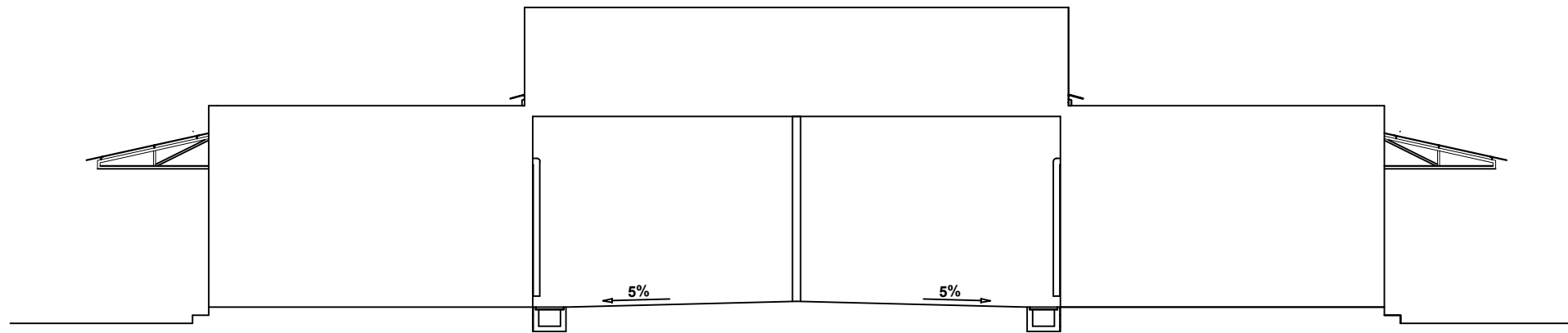
Fondation

Ech: 1/100

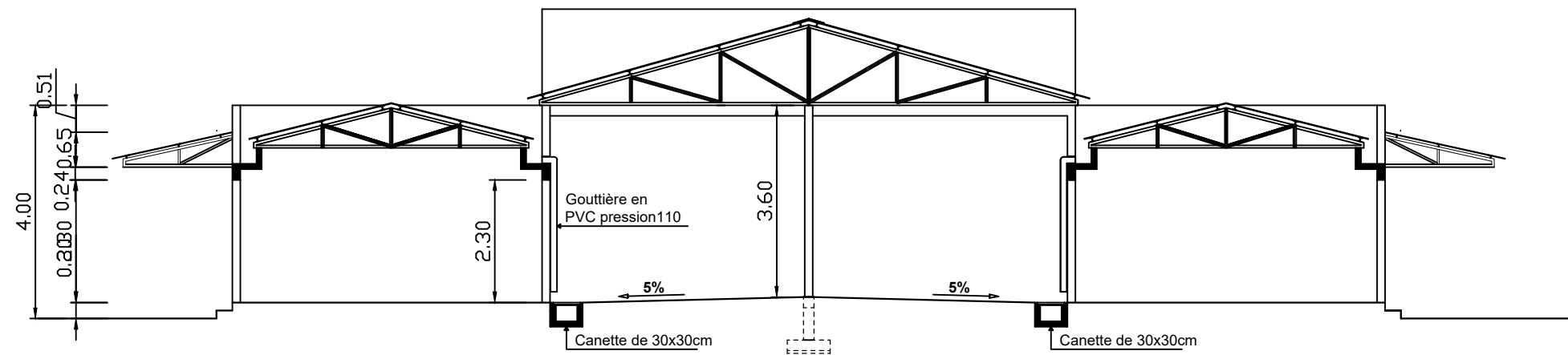
HALLE AUX POISSONS



Façade Principale

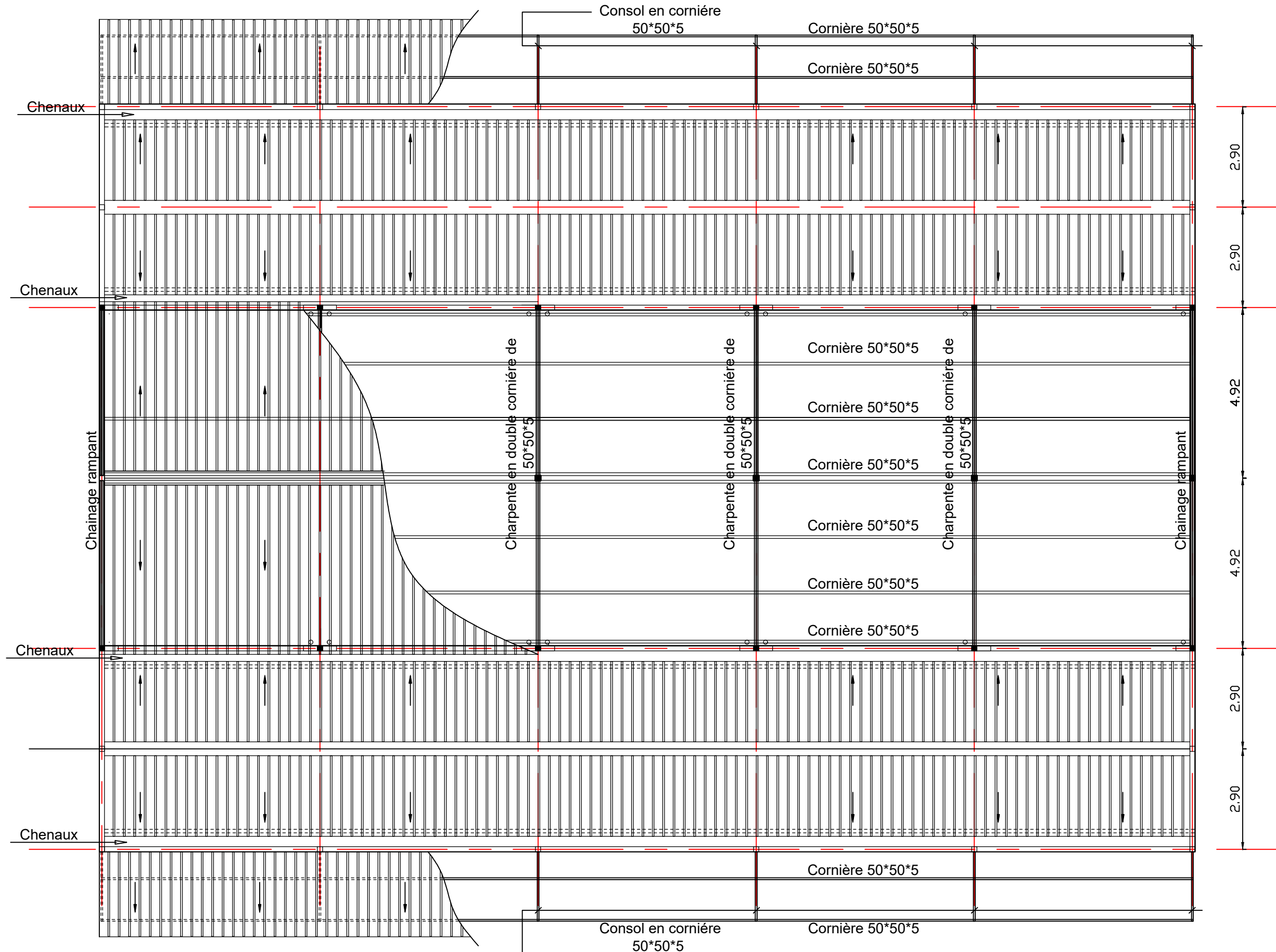


Façade Lat. Droite



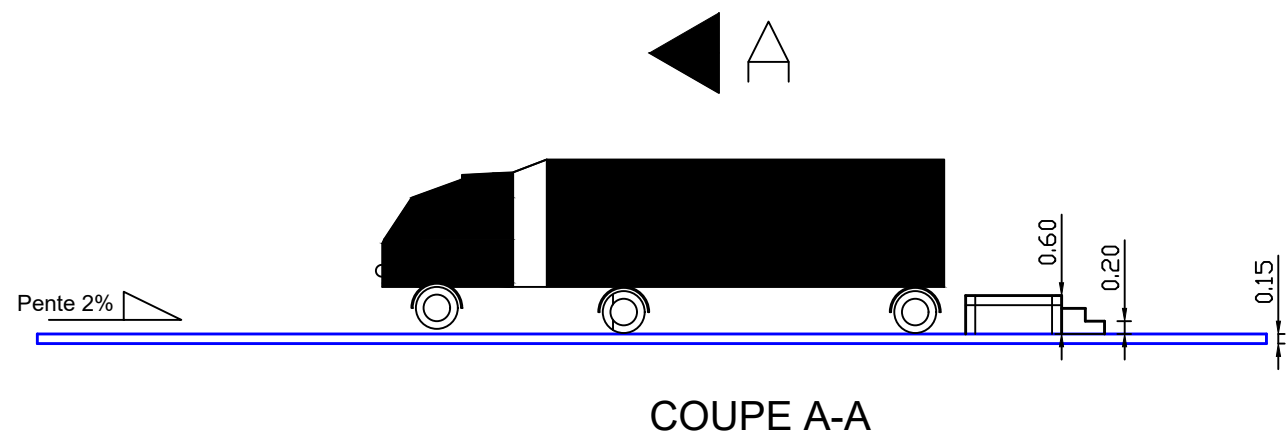
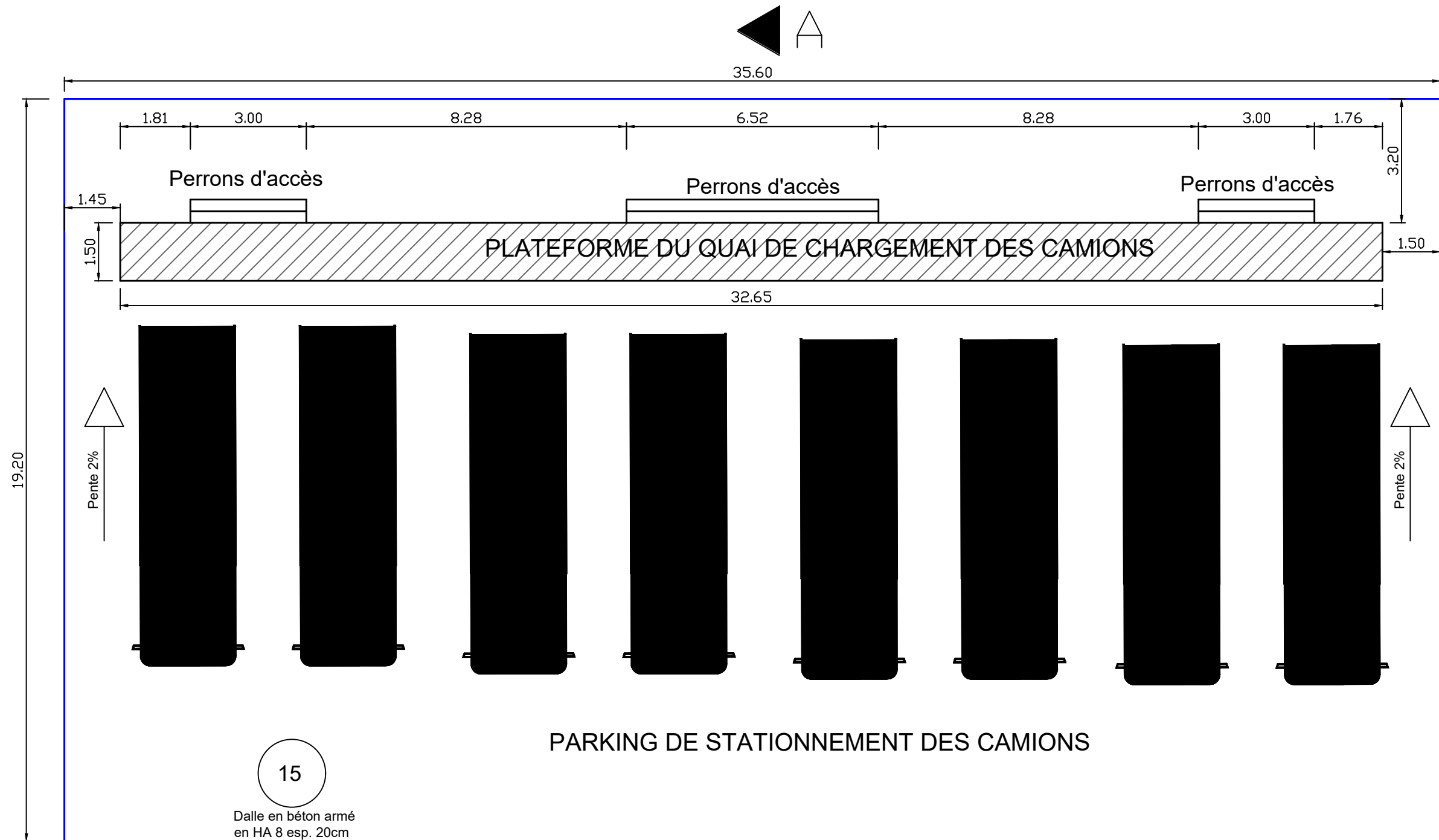
Coupe AA

# HALLE AUX POISSONS

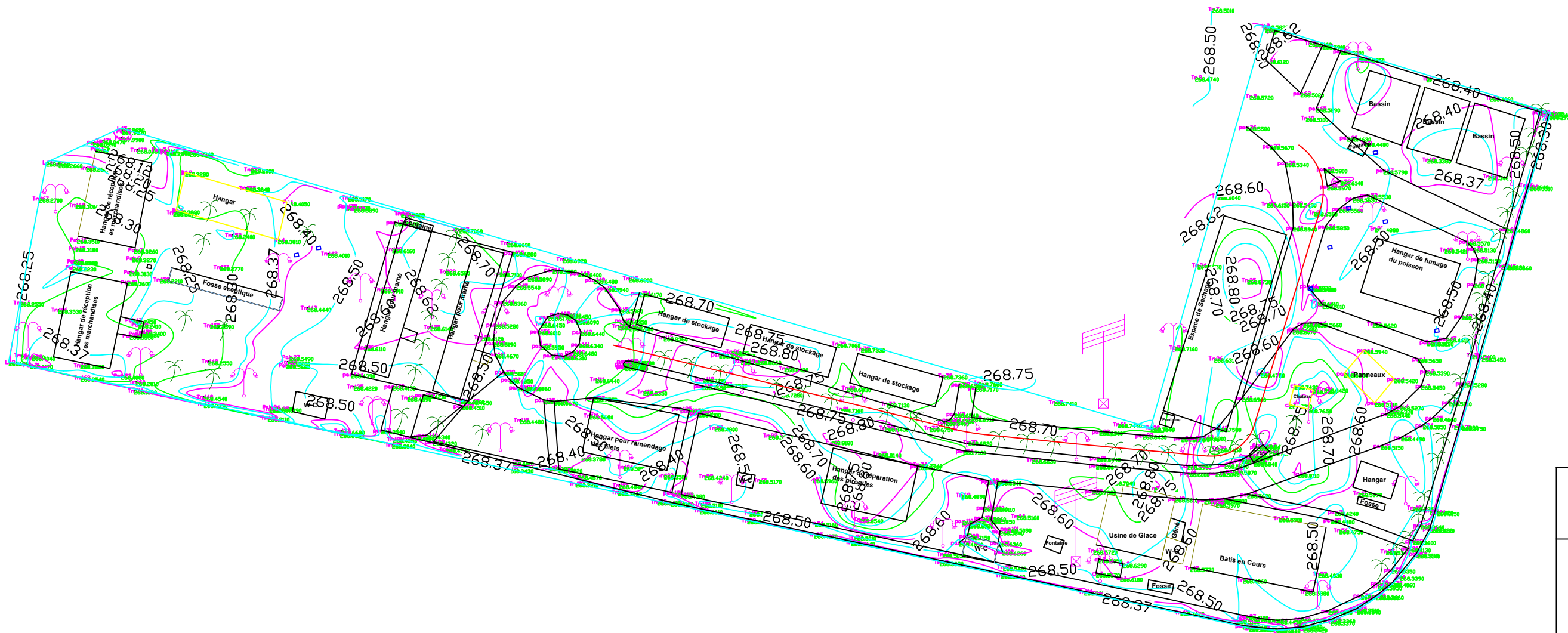





PLAN DE TOITURE

# Parking et quai de chargement des camions



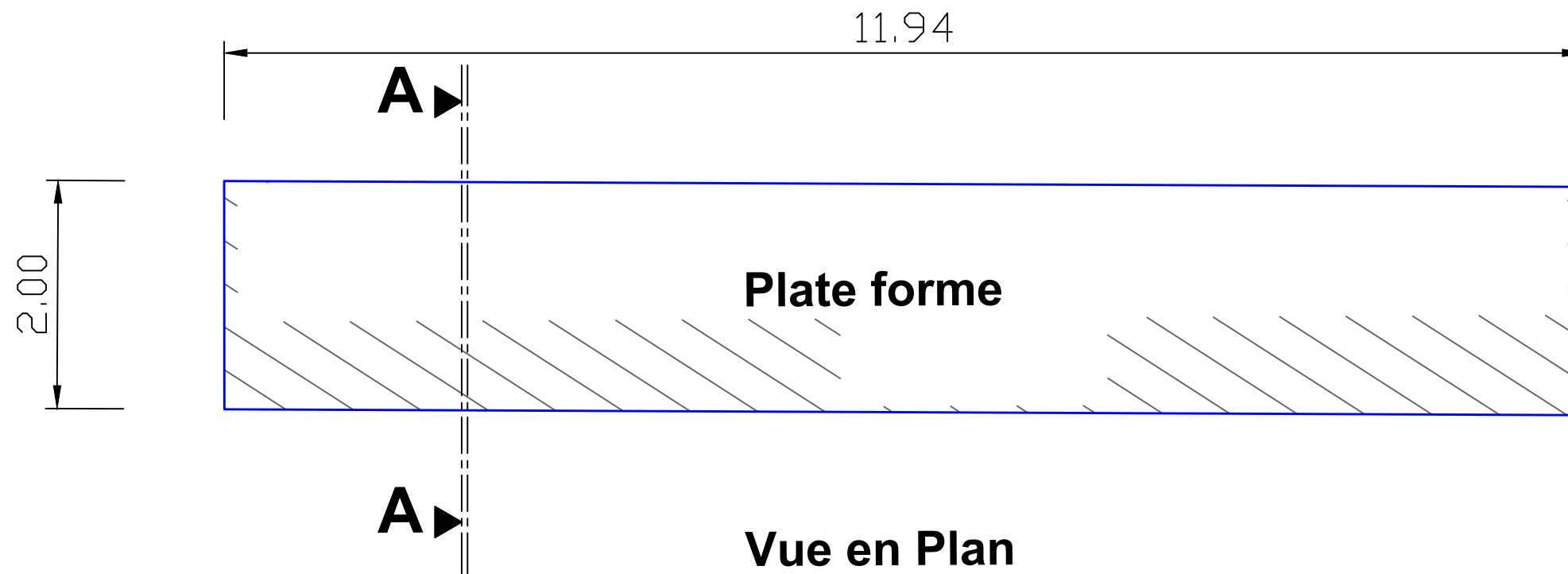




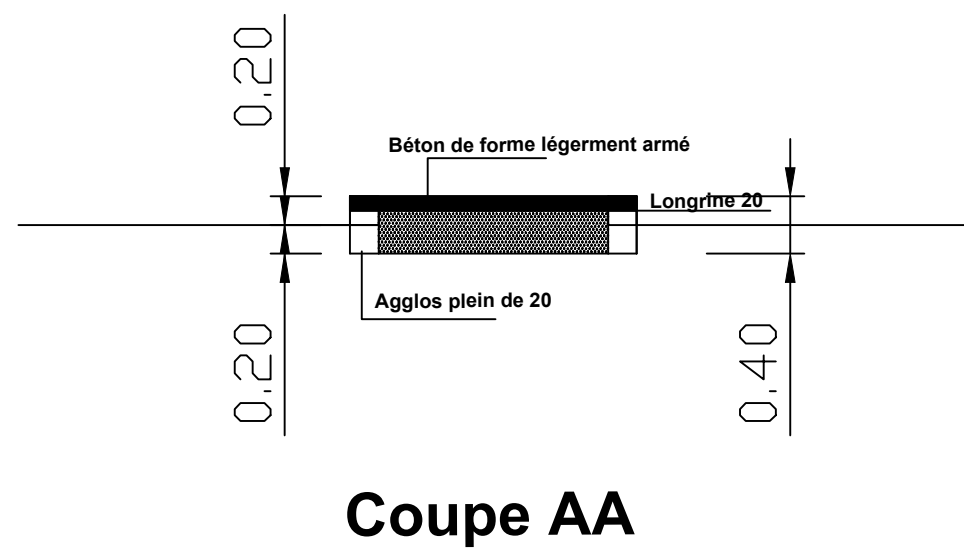
LEGENDE	
Arbre	
Lampadaire	
Poteau électrique	

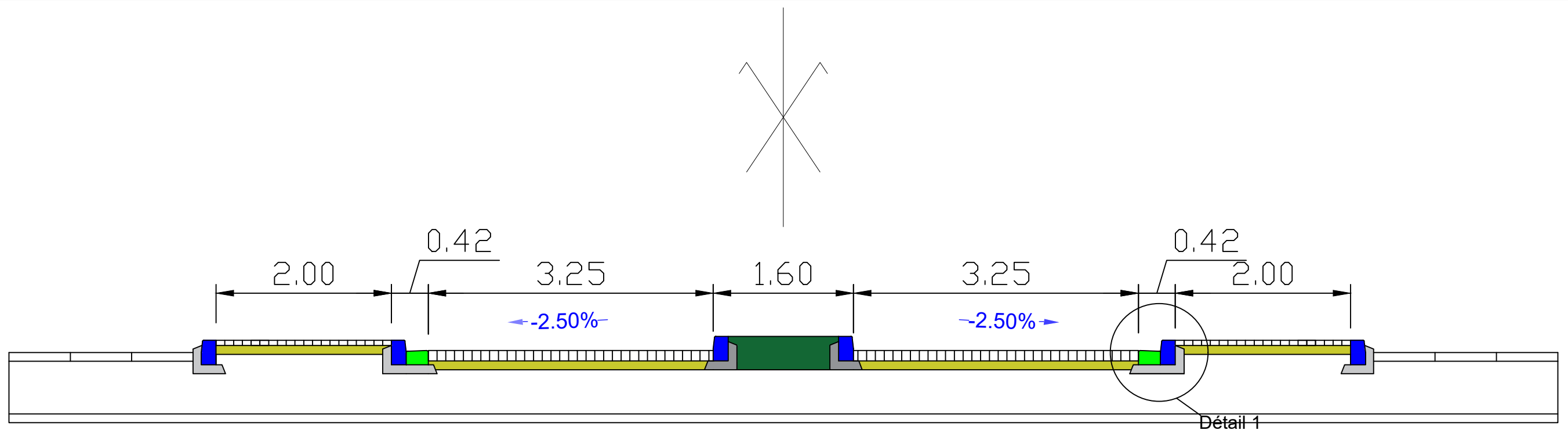
# Plan de levé topographique - Port de pêche de Mopti

PLATE FORME DE STOCKAGE DE BOIS



**Facade principale**

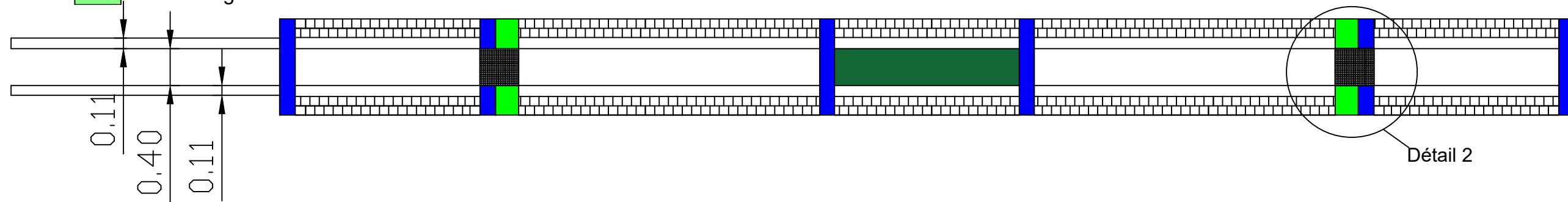




Légende structure :

- Bordure T3
- Bordure CS3
- Pavés béton
- Lit de sable
- Béton d'ancrage
- Terre Végétale

## Profil en travers de la voirie et piéton



## Vue en plan cunette transversale de la voirie et piéton

Echelle : 1/50