

Notes

- (1) All Dimensions Are In Cm.
- (2) All Levels Are In Meter
- (3) Any Missing or Unclear Detail And All Fastening Systems For All Elements Shall be Approved by The Supervisor.

Legend:

- Stone Wall
- Brick Wall
- Reinforced Concrete
- Gypsum Wall
- Main Electrical Board
- 3 Phases
- Single Socket
- Twin Socket
- Server Box
- Projector
- Single Socket -W.P.
- Twin Socket -W.P.
- Wire Board
- CAM
- Camera
- Sound System
- Single Switch
- Fire Extinguisher
- Fire Alarm
- Double Switch
- Triple Switch
- Telephone
- T.V.
- Ventilation Fan
- Gas Supply Box
- Water Supply Box
- A.C.

REVISIONS

NO.	DRAWINGS	DATE
(1)		
(2)		
(3)		

Contracting Authority:



Enabel - Belgian Development Agency

Funded By:



Contract Title:

Public works contract for Fablab Transformation Works and Furniture Supply in Schools in East Jerusalem

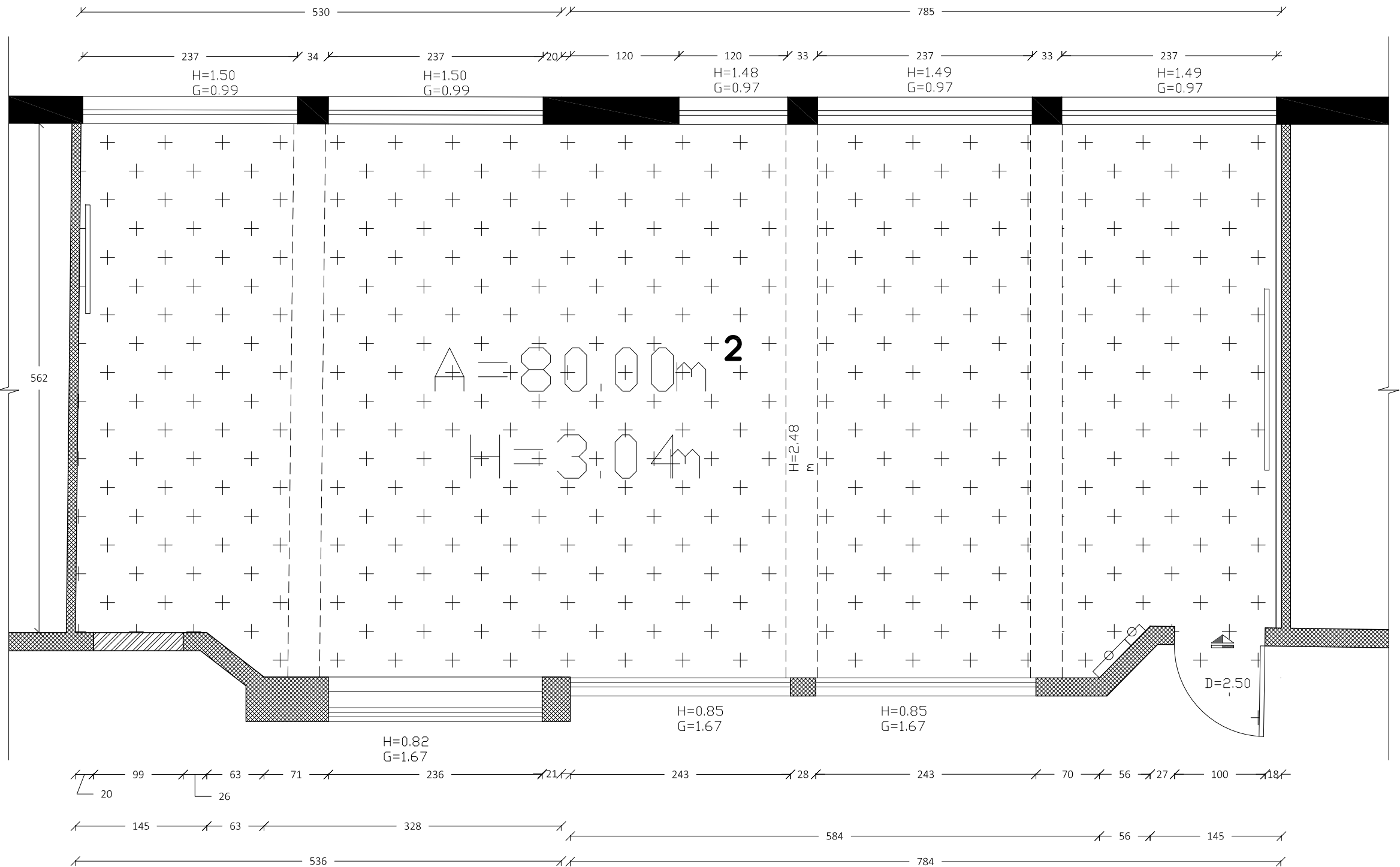
Reference No.: PZA170421T-10036

Designed by:



Enabel - Belgian Development Agency

Lot:	School:	Drawing Title:
Lot 1	AL AQSA	Survey Plan
Scale:	Date:	Drawing Code:
1:50	8/12/2022	AQS-1



Notes

- (1) All Dimensions Are In Cm.
- (2) All Levels Are In Meter
- (3) Any Missing or Unclear Detail And All Fastening Systems For All Elements Shall be Approved by The Supervisor.

Legend:

- Stone Wall
- Brick Wall
- Reinforced Concrete
- Gypsum Wall
- Main Electrical Board
- 3 Phases
- Single Socket
- Twin Socket
- Server Box
- Projector
- Single Socket -W.P.
- Twin Socket -W.P.
- Wire Board
- CAM
- Camera
- Sound System
- Single Switch
- Fire Extinguisher
- Fire Alarm
- Double Switch
- Triple Switch
- Telephone
- T.V.
- Ventilation Fan
- Gas Supply Box
- Water Supply Box
- A.C.

REVISIONS		
NO.	DRAWINGS	DATE
(1)		
(2)		
(3)		

Contracting Authority:



Enabel - Belgian Development Agency

Funded By:



Contract Title:

Public works contract for Fablab Transformation Works and Furniture Supply in Schools in East Jerusalem

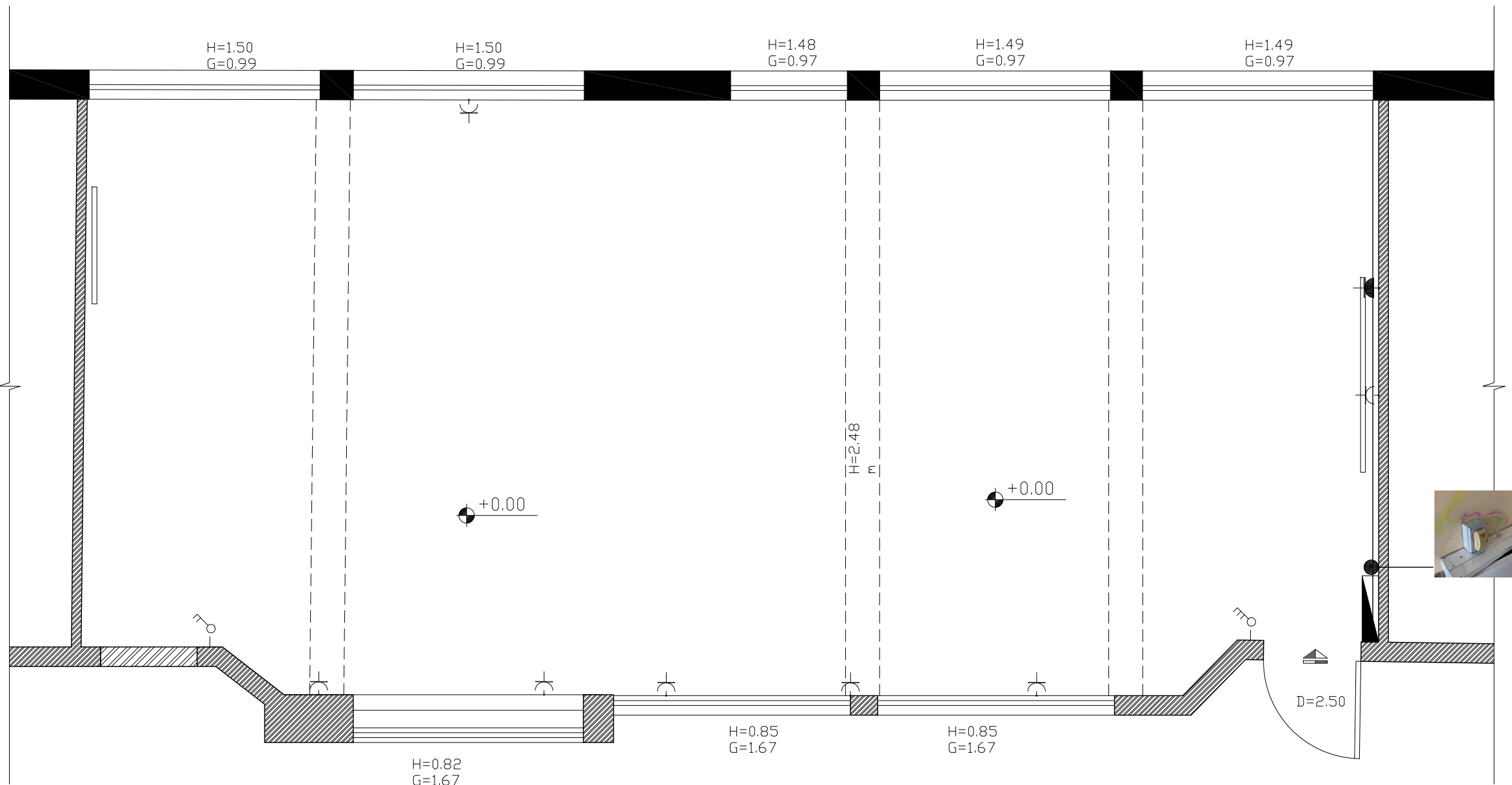
Reference No.: PZA170421T-10036

Designed by:



Enabel - Belgian Development Agency

Lot:	School:	Drawing Title:
Lot 1	AL AQSA	Area
Scale:	Date:	Drawing Code:
1:50	8/12/2022	AQS-2



Notes

- (1) All Dimensions Are In Cm.
(2) All Levels Are In Meter
(3) Any Missing or Unclear Detail And All Fastening Systems For All Elements Shall be Approved by The Supervisor.

Legend:

- Stone Wall
- Brick Wall
- Reinforced Concrete
- Gypsum Wall
- Main Electrical Board
- 3 Phases
- Single Socket
- Twin Socket
- Server Box
- Projector
- Single Socket - W.P.
- Twin Socket - W.P.
- Wire Board
- CAM
- Camera
- Sound System
- Single Switch
- Fire Extinguisher
- Fire Alarm
- Double Switch
- Triple Switch
- Telephone
- T.V.
- Ventilation Fan
- Gas Supply Box
- Water Supply Box
- A.C.

REVISIONS

NO.	DRAWINGS	DATE
(1)		
(2)		
(3)		

Contracting Authority:



Enabel - Belgian Development Agency

Funded By:



Contract Title:

Public works contract for Fablab Transformation Works and Furniture Supply in Schools in East Jerusalem

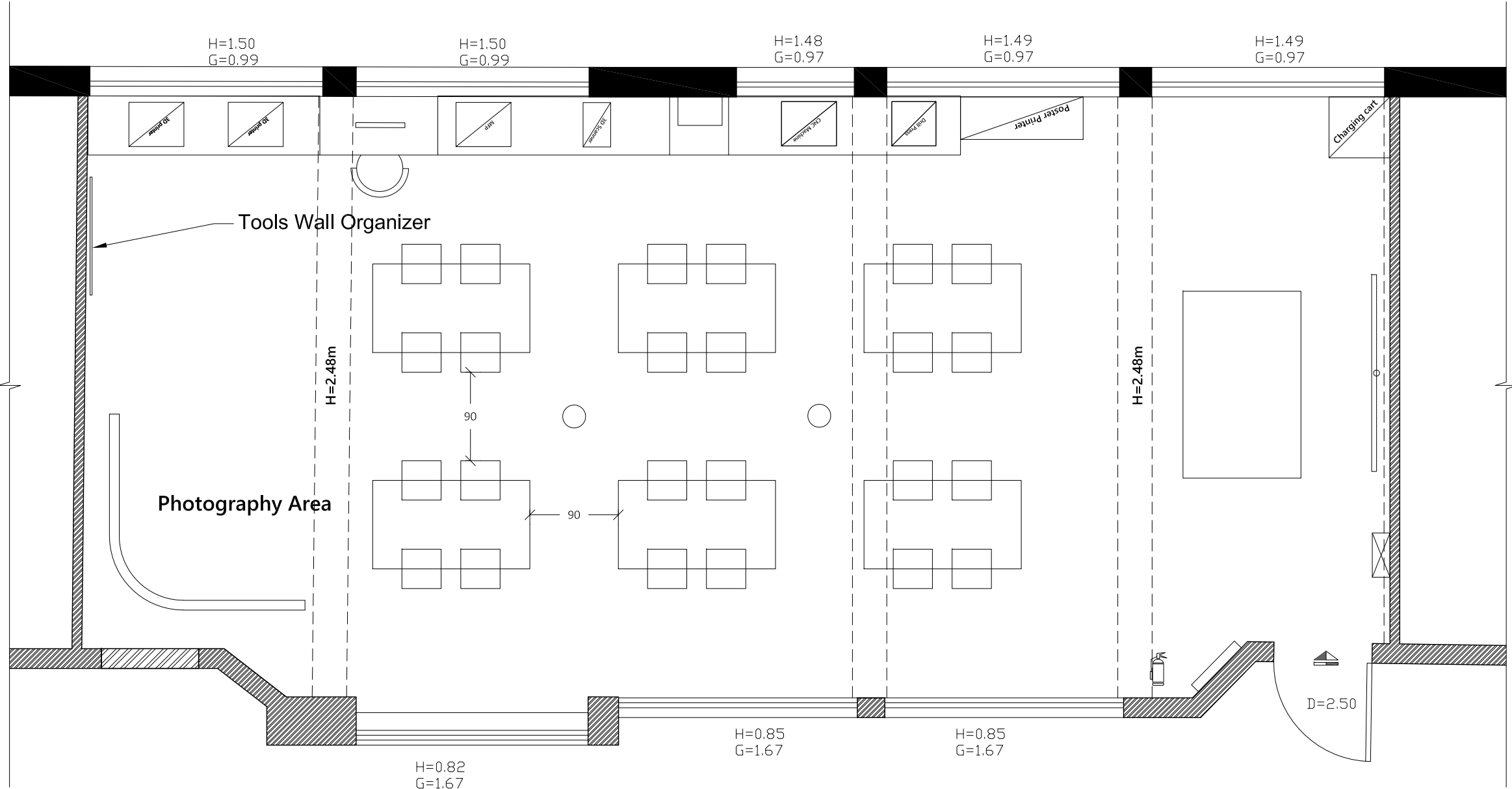
Reference No.: PZA170421T-10036

Designed by:



Enabel - Belgian Development Agency

Lot:	School:	Drawing Title:
Lot 1	AL AQSA	Existing Electrical Plan
Scale:	Date:	Drawing Code:
1:50	8/12/2022	AQS-3



Notes

- (1) All Dimensions Are In Cm.
(2) All Levels Are In Meter
(3) Any Missing or Unclear Detail And All Fastening Systems For All Elements Shall be Approved by The Supervisor.

Legend:

- Stone Wall
- Brick Wall
- Reinforced Concrete
- Gypsum Wall
- Main Electrical Board
- 3 Phases
- Single Socket
- Twin Socket
- Server Box
- Projector
- Single Socket - W.P.
- Twin Socket - W.P.
- Wire Board
- CAM
- Camera
- Sound System
- Single Switch
- Fire Extinguisher
- Fire Alarm
- Double Switch
- Triple Switch
- Telephone
- T.V.
- Ventilation Fan
- Gas Supply Box
- Water Supply Box
- A.C.

REVISIONS

NO.	DRAWINGS	DATE
(1)		
(2)		
(3)		

Contracting Authority:



Enabel - Belgian Development Agency

Funded By:



Contract Title:

Public works contract for Fablab Transformation Works and Furniture Supply in Schools in East Jerusalem

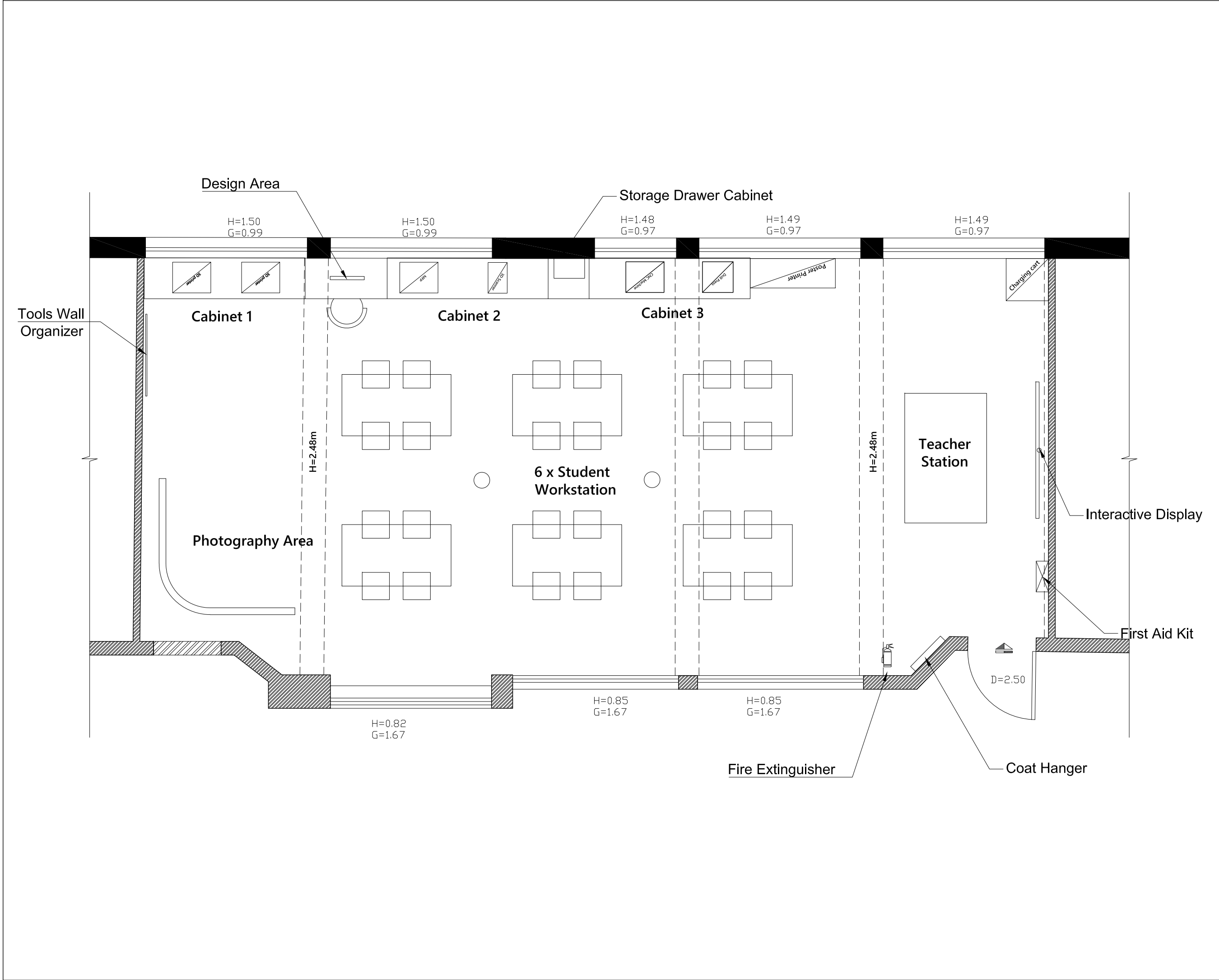
Reference No.: PZA170421T-10036

Designed by:



Enabel - Belgian Development Agency

Lot:	School:	Drawing Title:
Lot 1	AL AQSA	Outline plan
Scale:	Date:	Drawing Code:
1:50	8/12/2022	AQS-4



Notes

(1) All Dimensions Are In Cm.
(2) All Levels Are In Meter
(3) Any Missing or Unclear Detail And All Fastening Systems For All Elements Shall be Approved by The Supervisor.

Legend:

Stone Wall

Brick Wall

Reinforced Concrete

Gypsum Wall

Main Electrical Board

3 Phases

Single Socket

Twin Socket

Server Box

Projector

Single Socket -W.P.

Twin Socket -W.P.

Wire Board

CAM

Camera

Sound System

Single Switch

Fire Extinguisher

Fire Alarm

Double Switch

Triple Switch

Telephone

T.V.

Ventilation Fan

Gas Supply Box

Water Supply Box

A.C.

REVISIONS

NO.	DRAWINGS	DATE
(1)		
(2)		
(3)		

Contracting Authority:

Enabel

Enabel - Belgian Development Agency

Funded By:

Belgium

partner in development

This Project is Funded by

EUROPEAN UNION

Contract Title:

Public works contract for Fablab Transformation Works and Furniture Supply in Schools in East Jerusalem

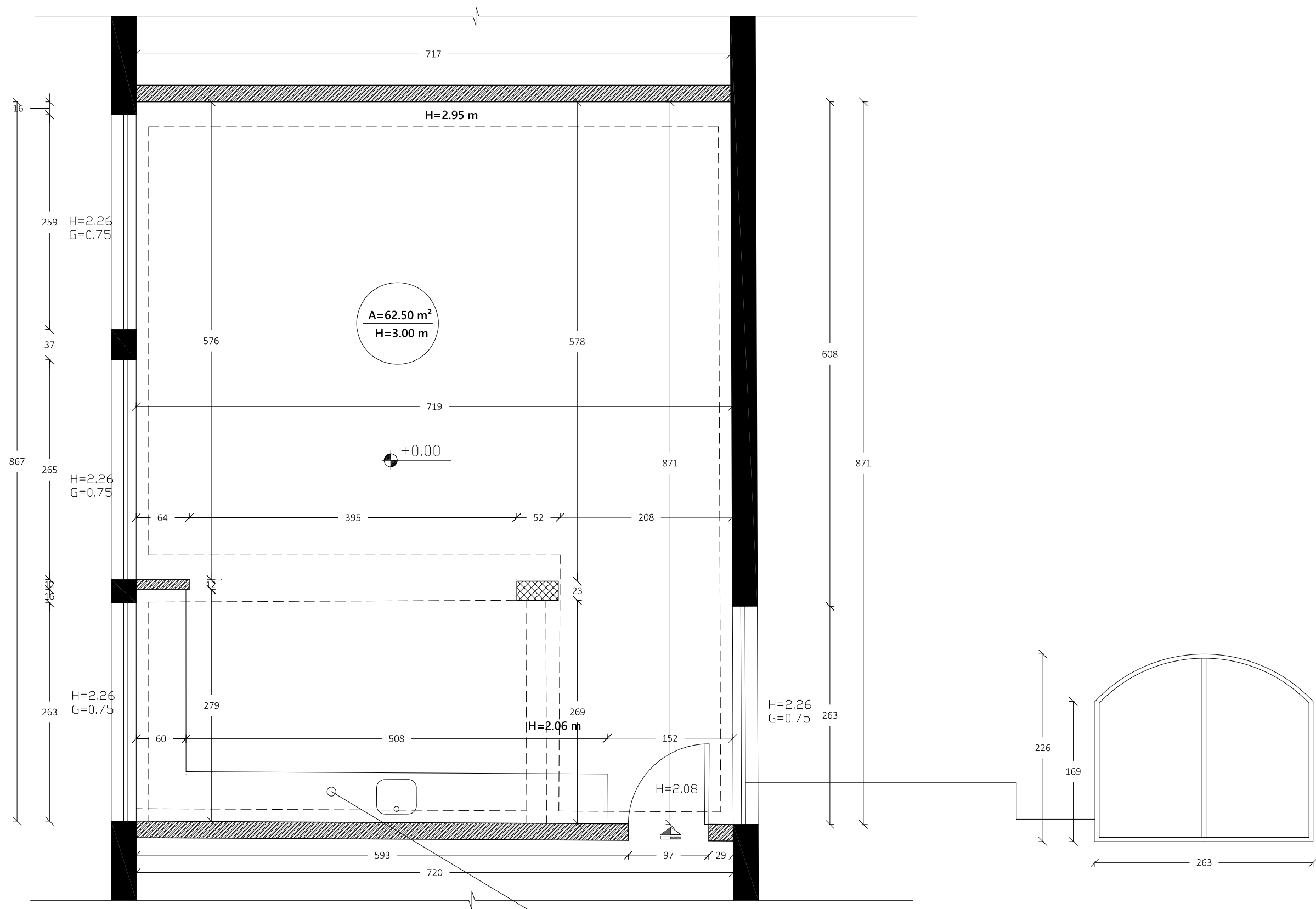
Reference No.: PZA170421T-10036

Designed by:

Enabel

Enabel - Belgian Development Agency

Lot:	School:	Drawing Title:
Lot 1	AL AQSA	Furniture Plan
Scale:	Date:	Drawing Code:
1:50	8/12/2022	AQS-6



Notes

- (1) All Dimensions Are In Cm.
(2) All Levels Are In Meter
(3) Any Missing or Unclear Detail And All Fastening Systems For All Elements Shall be Approved by The Supervisor.

Legend:

- Stone Wall
- Brick Wall
- Reinforced Concrete
- Gypsum Wall
- Main Electrical Board
- 3 Phases
- Single Socket
- Twin Socket
- Server Box
- Projector
- Single Socket -W.P.
- Twin Socket -W.P.
- Wire Board
- CAM
- Camera
- Sound System
- Single Switch
- Fire Extinguisher
- Fire Alarm
- Double Switch
- Triple Switch
- Telephone
- T.V.
- Ventilation Fan
- Gas Supply Box
- Water Supply Box
- A.C.

REVISIONS

NO.	DRAWINGS	DATE
(1)		
(2)		
(3)		

Contracting Authority:



Enabel - Belgian Development Agency

Funded By:



Contract Title:

Public works contract for Fablab Transformation Works and Furniture Supply in Schools in East Jerusalem

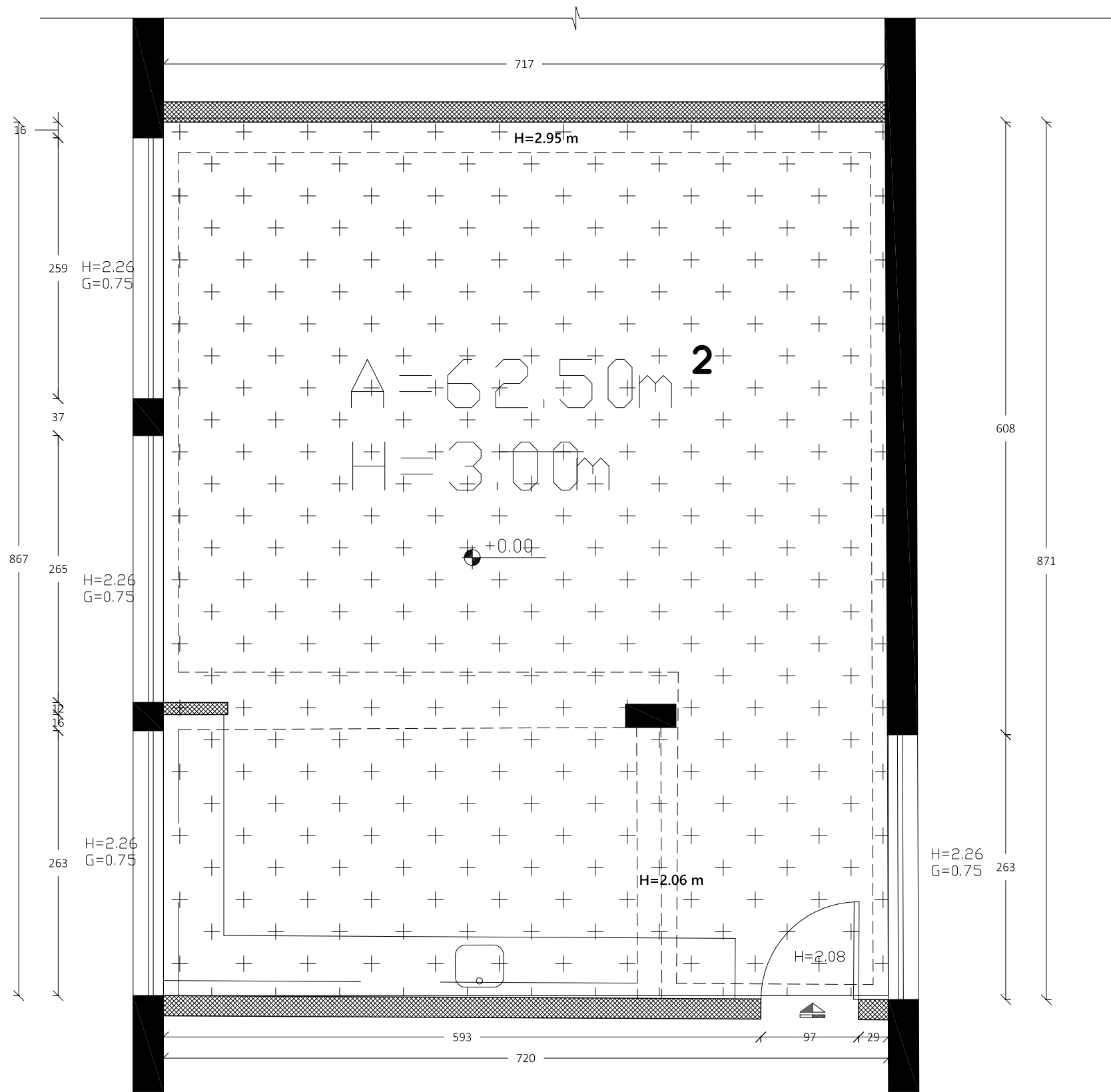
Reference No.: PZA170421T-10036

Designed by:



Enabel - Belgian Development Agency

Lot:	School:	Drawing Title:
Lot 1	Sheikh Saad Girls	Survey Plan
Scale:	Date:	Drawing Code:
1:50	8/12/2022	SSG-1



Notes

- (1) All Dimensions Are In Cm.
- (2) All Levels Are In Meter
- (3) Any Missing or Unclear Detail And All Fastening Systems For All Elements Shall be Approved by The Supervisor.

Legend:

- Stone Wall
- Brick Wall
- Reinforced Concrete
- Gypsum Wall
- Main Electrical Board
- 3 Phases
- Single Socket
- Twin Socket
- Server Box
- Projector
- Single Socket -W.P.
- Twin Socket -W.P.
- Wire Board
- CAM
- Camera
- Sound System
- Single Switch
- Fire Extinguisher
- Fire Alarm
- Double Switch
- Triple Switch
- Telephone
- T.V.
- Ventilation Fan
- Gas Supply Box
- Water Supply Box
- A.C.

REVISIONS

NO.	DRAWINGS	DATE
(1)		
(2)		
(3)		

Contracting Authority:



Enabel - Belgian Development Agency

Funded By:



Contract Title:

Public works contract for Fablab Transformation Works and Furniture Supply in Schools in East Jerusalem

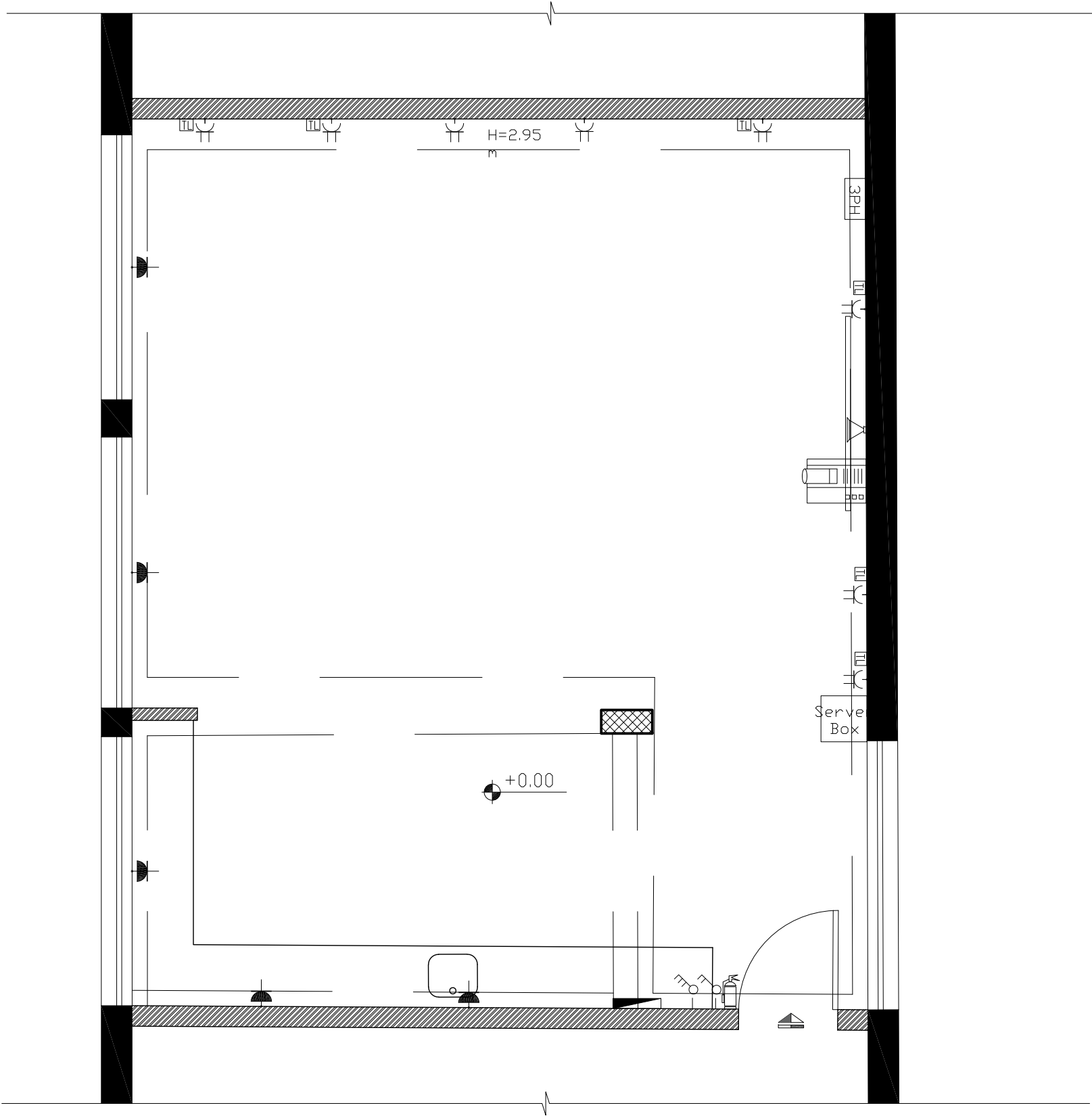
Reference No.: PZA170421T-10036

Designed by:



Enabel - Belgian Development Agency

Lot:	School:	Drawing Title:
Lot 1	Sheikh Saad Girls	Area
Scale:	Date:	Drawing Code:
1:50	8/12/2022	SSG-2



Notes

- (1) All Dimensions Are In Cm.
(2) All Levels Are In Meter
(3) Any Missing or Unclear Detail And All Fastening Systems For All Elements Shall be Approved by The Supervisor.

Legend:

- Stone Wall
- Brick Wall
- Reinforced Concrete
- Gypsum Wall
- Main Electrical Board
- 3 Phases
- Single Socket
- Twin Socket
- Server Box
- Projector
- Single Socket -W.P.
- Twin Socket -W.P.
- Wire Board
- CAM
- Camera
- Sound System
- Single Switch
- Fire Extinguisher
- Fire Alarm
- Double Switch
- Triple Switch
- Telephone
- T.V.
- Ventilation Fan
- Gas Supply Box
- Water Supply Box
- A.C.

REVISIONS

NO.	DRAWINGS	DATE
(1)		
(2)		
(3)		

Contracting Authority:



Enabel - Belgian Development Agency

Funded By:



Contract Title:

Public works contract for Fablab Transformation Works and Furniture Supply in Schools in East Jerusalem

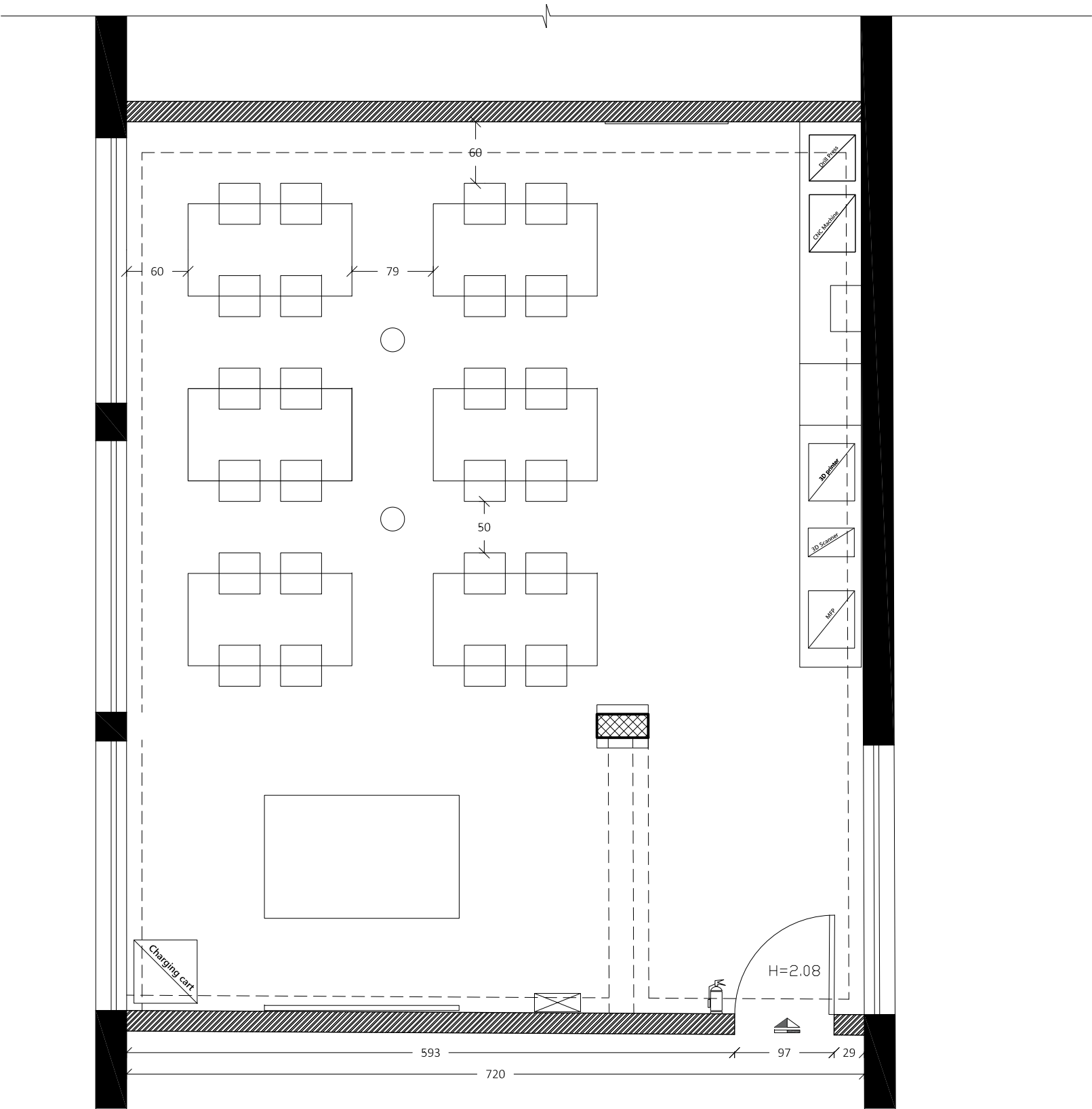
Reference No.: PZA170421T-10036

Designed by:



Enabel - Belgian Development Agency

Lot:	School:	Drawing Title:
Lot 1	Sheikh Saad Girls	Existing Electrical Plan
Scale:	Date:	Drawing Code:
1:50	8/12/2022	SSG-3



Notes

- (1) All Dimensions Are In Cm.
(2) All Levels Are In Meter
(3) Any Missing or Unclear Detail And All Fastening Systems For All Elements Shall be Approved by The Supervisor.

Legend:

- Stone Wall
- Brick Wall
- Reinforced Concrete
- Gypsum Wall
- Main Electrical Board
- 3 Phases
- Single Socket
- Twin Socket
- Server Box
- Projector
- Single Socket -W.P.
- Twin Socket -W.P.
- Wire Board
- CAM
- Camera
- Sound System
- Single Switch
- Fire Extinguisher
- Fire Alarm
- Double Switch
- Triple Switch
- Telephone
- T.V.
- Ventilation Fan
- Gas Supply Box
- Water Supply Box
- A.C.

REVISIONS

NO.	DRAWINGS	DATE
(1)		
(2)		
(3)		

Contracting Authority:



Enabel - Belgian Development Agency

Funded By:



Contract Title:

Public works contract for Fablab Transformation Works and Furniture Supply in Schools in East Jerusalem

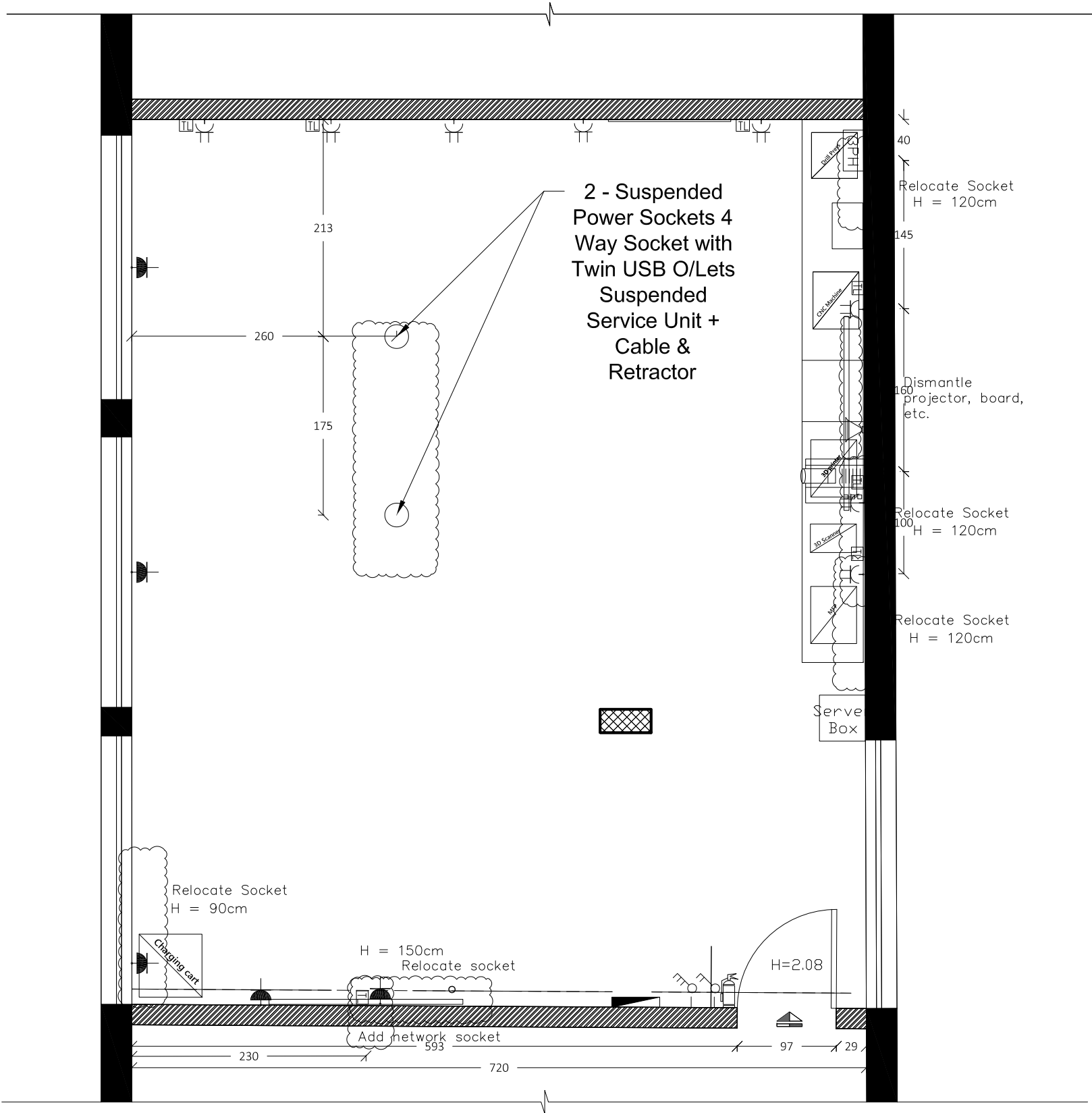
Reference No.: PZA170421T-10036

Designed by:



Enabel - Belgian Development Agency

Lot:	School:	Drawing Title:
Lot 1	Sheikh Saad Girls	Outline plan
Scale:	Date:	Drawing Code:
1:50	8/12/2022	SSG-4



Notes

- (1) All Dimensions Are In Cm.
- (2) All Levels Are In Meter
- (3) Any Missing or Unclear Detail And All Fastening Systems For All Elements Shall be Approved by The Supervisor.

Legend:

- Stone Wall
- Brick Wall
- Reinforced Concrete
- Gypsum Wall
- Main Electrical Board
- 3 Phases
- Single Socket
- Twin Socket
- Server Box
- Projector
- Single Socket -W.P.
- Twin Socket -W.P.
- Wire Board
- CAM
- Camera
- Sound System
- Single Switch
- Fire Extinguisher
- Fire Alarm
- Double Switch
- Triple Switch
- Telephone
- T.V.
- Ventilation Fan
- Gas Supply Box
- Water Supply Box
- A.C.

REVISIONS

NO.	DRAWINGS	DATE
(1)		
(2)		
(3)		

Contracting Authority:



Enabel - Belgian Development Agency

Funded By:



Contract Title:

Public works contract for Fablab Transformation Works and Furniture Supply in Schools in East Jerusalem

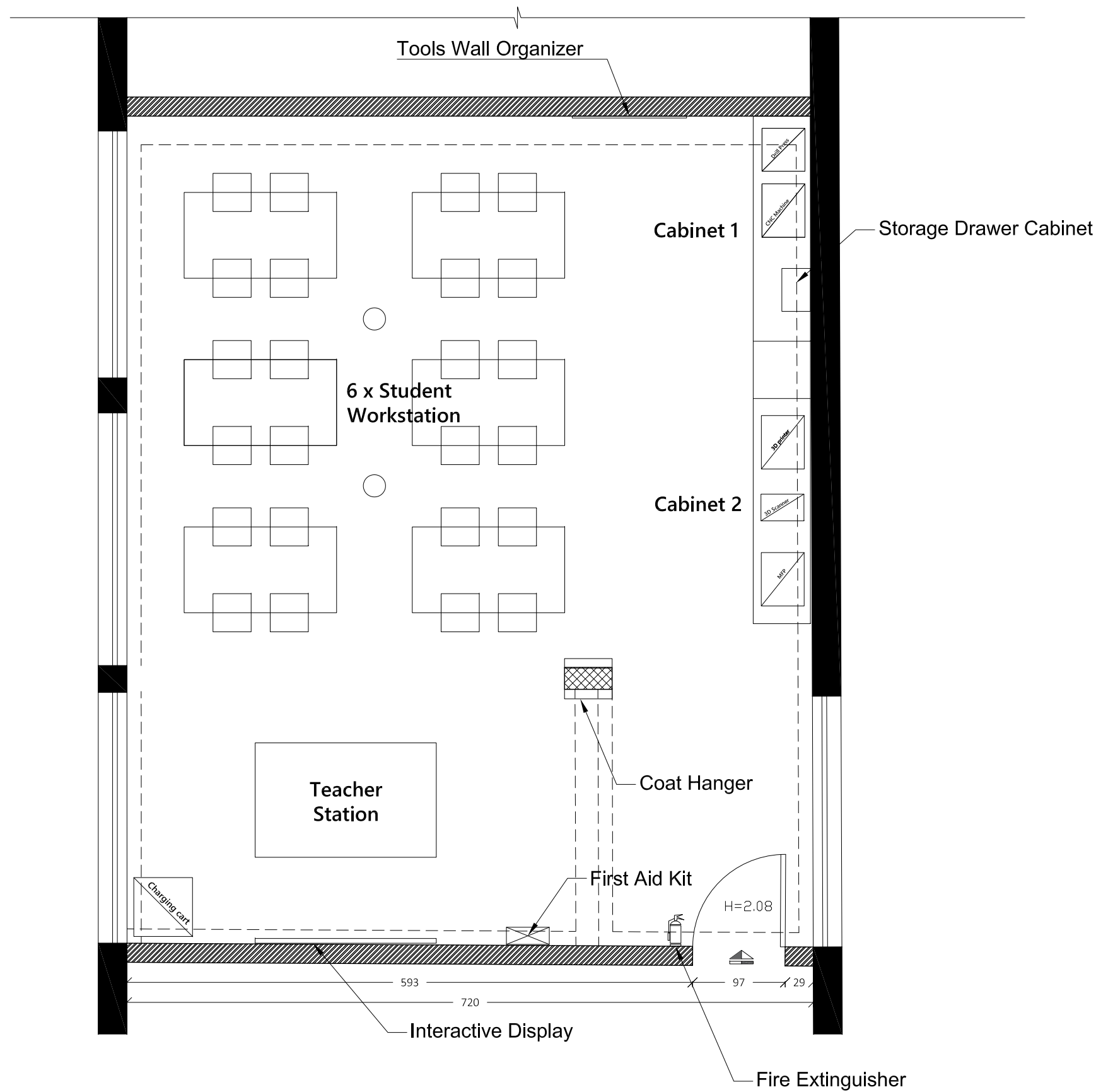
Reference No.: PZA170421T-10036

Designed by:



Enabel - Belgian Development Agency

Lot:	School:	Drawing Title:
Lot 1	Sheikh Saad Girls	Electrical Plan
Scale:	Date:	Drawing Code:
1:50	8/12/2022	SSG-5



Notes

- (1) All Dimensions Are In Cm.
- (2) All Levels Are In Meter
- (3) Any Missing or Unclear Detail And All Fastening Systems For All Elements Shall be Approved by The Supervisor.

Legend:

- Stone Wall
- Brick Wall
- Reinforced Concrete
- Gypsum Wall
- Main Electrical Board
- 3 Phases
- Single Socket
- Twin Socket
- Server Box
- Projector
- Single Socket -W.P.
- Twin Socket -W.P.
- Wire Board
- CAM
- Camera
- Sound System
- Single Switch
- Fire Extinguisher
- Fire Alarm
- Double Switch
- Triple Switch
- Telephone
- T.V.
- Ventilation Fan
- Gas Supply Box
- Water Supply Box
- A.C.

REVISIONS

NO.	DRAWINGS	DATE
(1)		
(2)		
(3)		

Contracting Authority:



Enabel - Belgian Development Agency

Funded By:



Contract Title:

Public works contract for Fablab Transformation Works and Furniture Supply in Schools in East Jerusalem

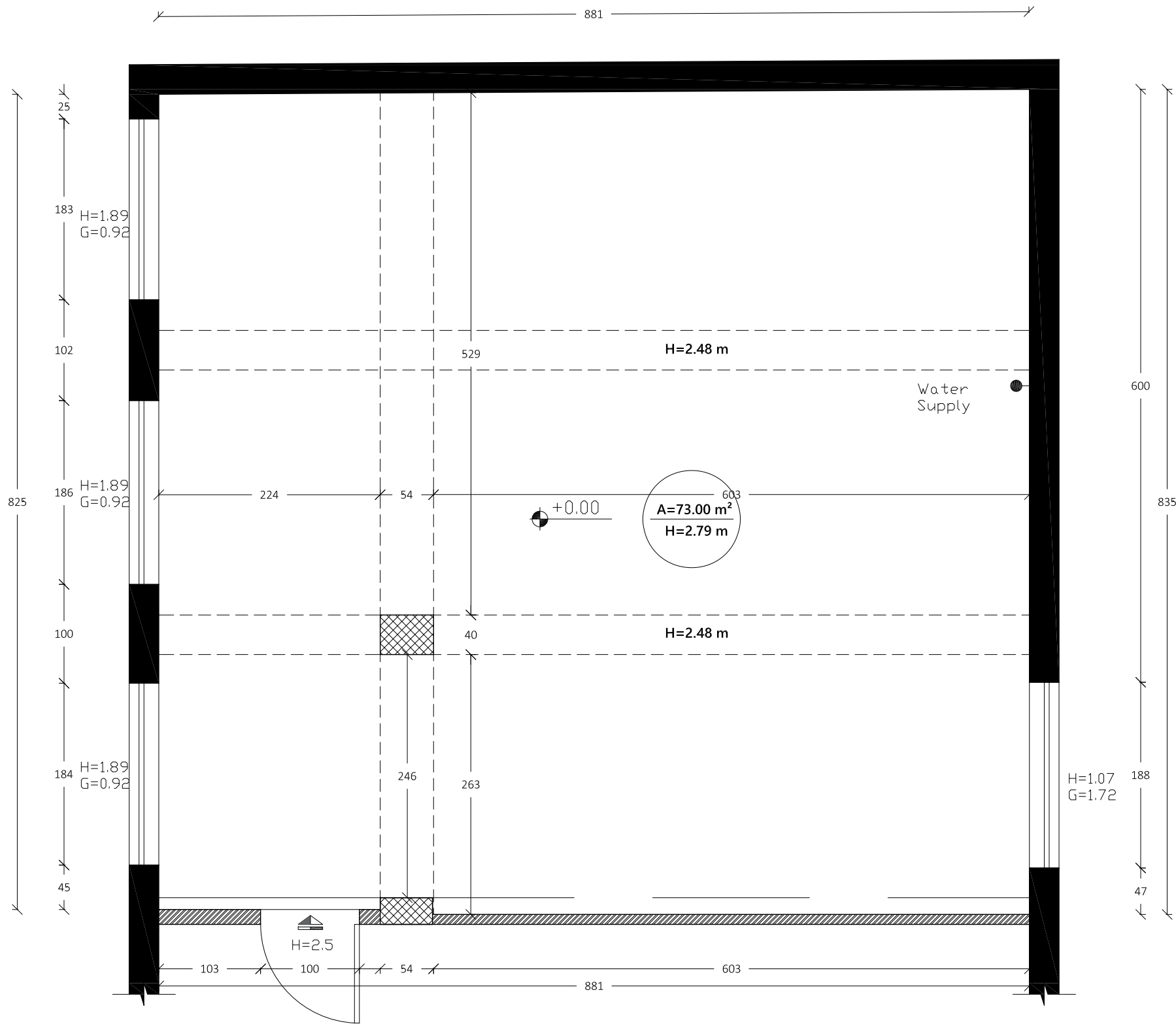
Reference No.: PZA170421T-10036

Designed by:



Enabel - Belgian Development Agency

Lot:	School:	Drawing Title:
Lot 1	Sheikh Saad Girls	Furniture Plan
Scale:	Date:	Drawing Code:
1:50	8/12/2022	SSG-6



Notes

- (1) All Dimensions Are In Cm.
(2) All Levels Are In Meter
(3) Any Missing or Unclear Detail And All Fastening Systems For All Elements Shall be Approved by The Supervisor.

Legend:

- Stone Wall
- Brick Wall
- Reinforced Concrete
- Gypsum Wall
- Main Electrical Board
- 3 Phases
- Single Socket
- Twin Socket
- Server Box
- Projector
- Single Socket - W.P.
- Twin Socket - W.P.
- Wire Board
- CAM
- Camera
- Sound System
- Single Switch
- Fire Extinguisher
- Fire Alarm
- Double Switch
- Triple Switch
- Telephone
- T.V.
- Ventilation Fan
- Gas Supply Box
- Water Supply Box
- A.C.

REVISIONS

NO.	DRAWINGS	DATE
(1)		
(2)		
(3)		

Contracting Authority:



Enabel - Belgian Development Agency

Funded By:



Contract Title:

Public works contract for Fablab Transformation Works and Furniture Supply in Schools in East Jerusalem

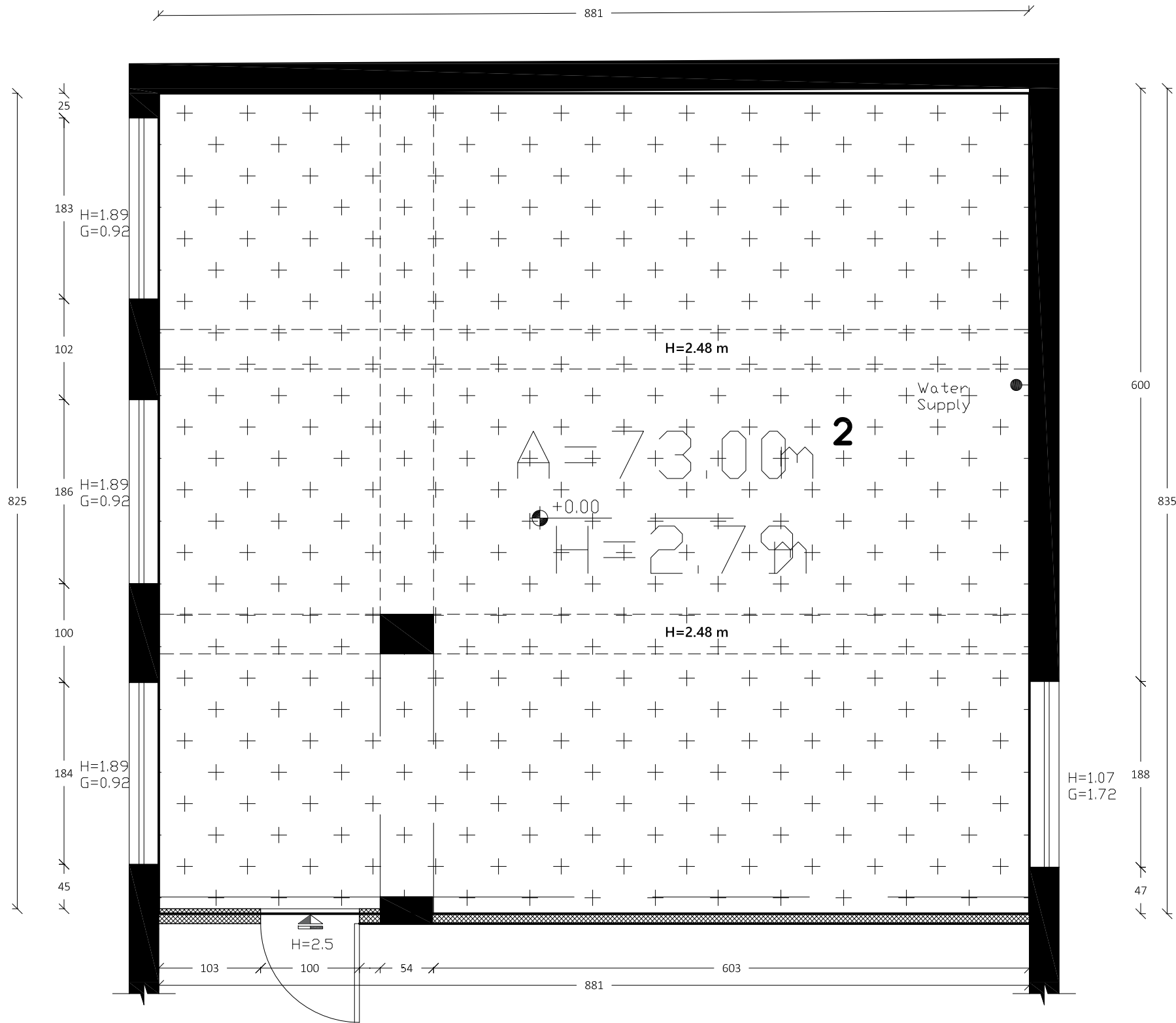
Reference No.: PZA170421T-10036

Designed by:



Enabel - Belgian Development Agency

Lot:	School:	Drawing Title:
Lot 1	Sheikh Saad Boys	Survey Plan
Scale:	Date:	Drawing Code:
1:50	8/12/2022	SSB-1



Notes

- (1) All Dimensions Are In Cm.
- (2) All Levels Are In Meter
- (3) Any Missing or Unclear Detail And All Fastening Systems For All Elements Shall be Approved by The Supervisor.

Legend:

- Stone Wall
- Brick Wall
- Reinforced Concrete
- Gypsum Wall
- Main Electrical Board
- 3 Phases
- Single Socket
- Twin Socket
- Server Box
- Projector
- Single Socket - W.P.
- Twin Socket - W.P.
- Wire Board
- CAM
- Camera
- Sound System
- Single Switch
- Fire Extinguisher
- Fire Alarm
- Double Switch
- Triple Switch
- Telephone
- T.V.
- Ventilation Fan
- Gas Supply Box
- Water Supply Box
- A.C.

REVISIONS

NO.	DRAWINGS	DATE
(1)		
(2)		
(3)		

Contracting Authority:



Enabel - Belgian Development Agency

Funded By:



Contract Title:

Public works contract for Fablab Transformation Works and Furniture Supply in Schools in East Jerusalem

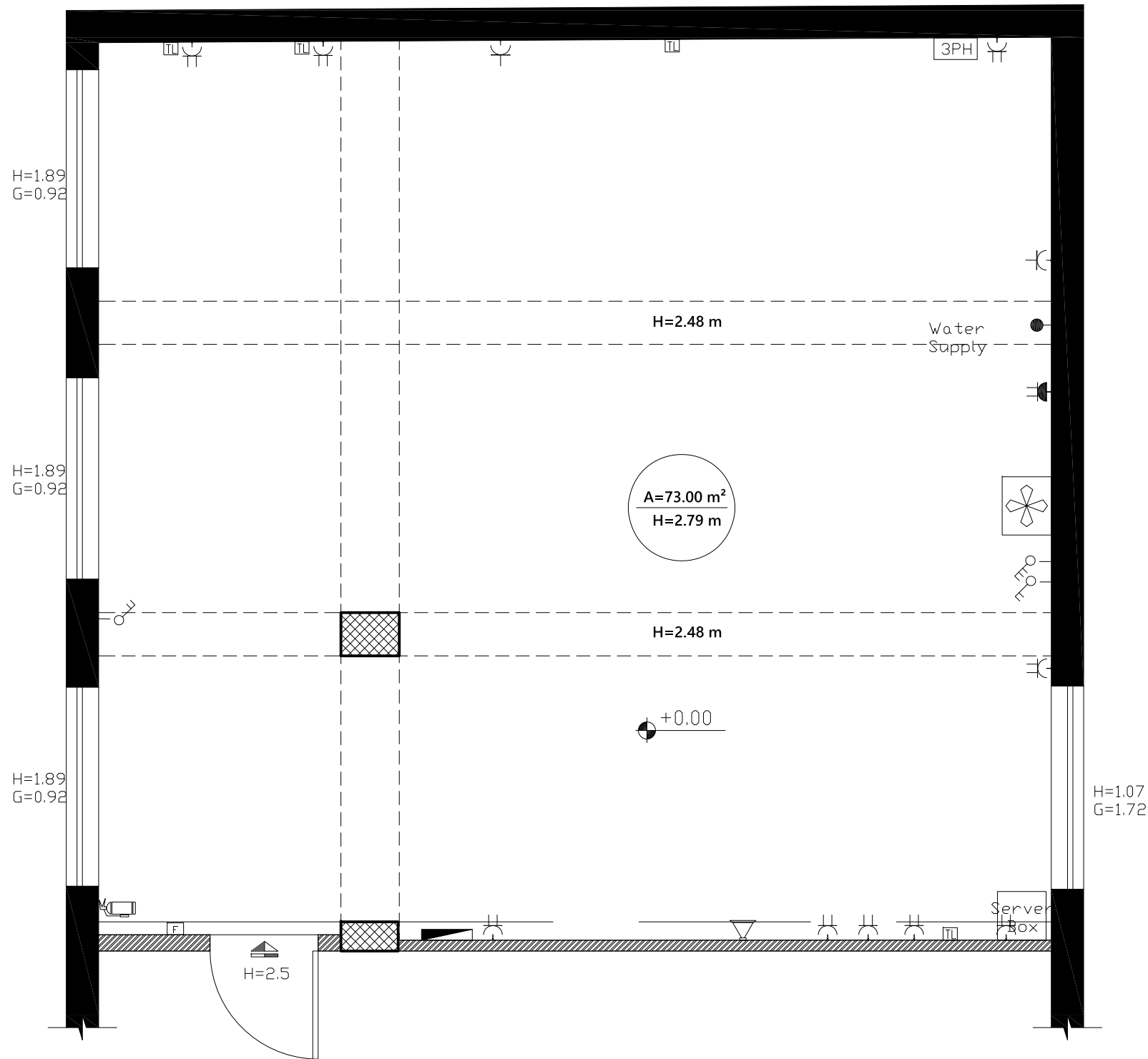
Reference No.: PZA170421T-10036

Designed by:



Enabel - Belgian Development Agency

Lot:	School:	Drawing Title:
Lot 1	Sheikh Saad Boys	Area
Scale:	Date:	Drawing Code:
1:50	8/12/2022	SSB-2



Notes

- (1) All Dimensions Are In Cm.
(2) All Levels Are In Meter
(3) Any Missing or Unclear Detail And All Fastening Systems For All Elements Shall be Approved by The Supervisor.

Legend:

- Stone Wall
- Brick Wall
- Reinforced Concrete
- Gypsum Wall
- Main Electrical Board
- 3 Phases
- Single Socket
- Twin Socket
- Server Box
- Projector
- Single Socket - W.P.
- Twin Socket - W.P.
- Wire Board
- CAM
- Camera
- Sound System
- Single Switch
- Fire Extinguisher
- Fire Alarm
- Double Switch
- Triple Switch
- Telephone
- T.V.
- Ventilation Fan
- Gas Supply Box
- Water Supply Box
- A.C.

REVISIONS

NO.	DRAWINGS	DATE
(1)		
(2)		
(3)		

Contracting Authority:



Enabel - Belgian Development Agency

Funded By:



Contract Title:

Public works contract for Fablab Transformation Works and Furniture Supply in Schools in East Jerusalem

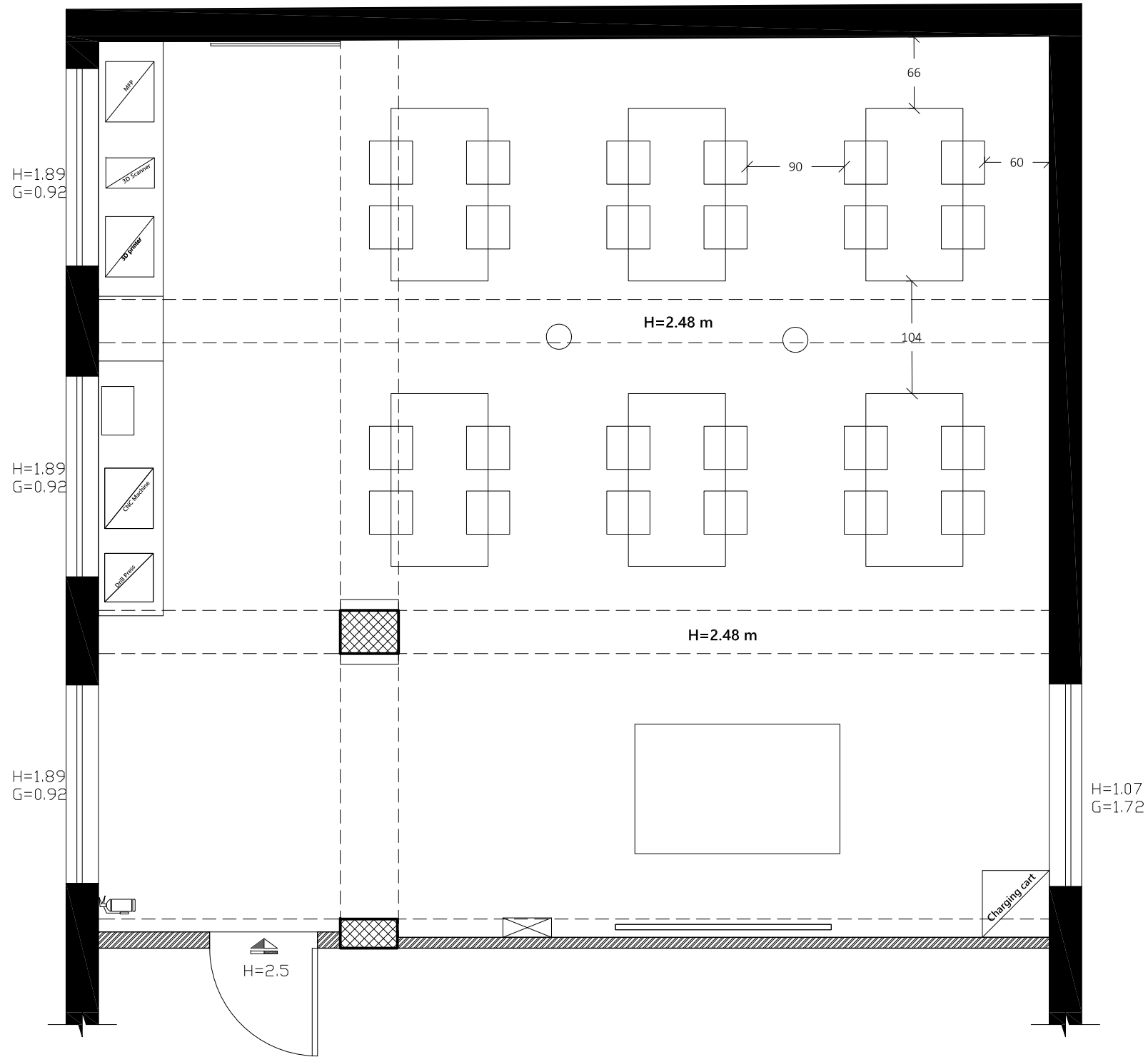
Reference No.: PZA170421T-10036

Designed by:



Enabel - Belgian Development Agency

Lot:	School:	Drawing Title:
Lot 1	Sheikh Saad Boys	Existing Electrical Plan
Scale:	Date:	Drawing Code:
1:50	8/12/2022	SSB-3



Notes

- (1) All Dimensions Are In Cm.
(2) All Levels Are In Meter
(3) Any Missing or Unclear Detail And All Fastening Systems For All Elements Shall be Approved by The Supervisor.

Legend:

- Stone Wall
- Brick Wall
- Reinforced Concrete
- Gypsum Wall
- Main Electrical Board
- 3 Phases
- Single Socket
- Twin Socket
- Server Box
- Projector
- Single Socket -W.P.
- Twin Socket -W.P.
- Wire Board
- CAM
- Camera
- Sound System
- Single Switch
- Fire Extinguisher
- Fire Alarm
- Double Switch
- Triple Switch
- Telephone
- T.V.
- Ventilation Fan
- Gas Supply Box
- Water Supply Box
- A.C.

REVISIONS

NO.	DRAWINGS	DATE
(1)		
(2)		
(3)		

Contracting Authority:



Enabel - Belgian Development Agency

Funded By:



Contract Title:

Public works contract for Fablab Transformation Works and Furniture Supply in Schools in East Jerusalem

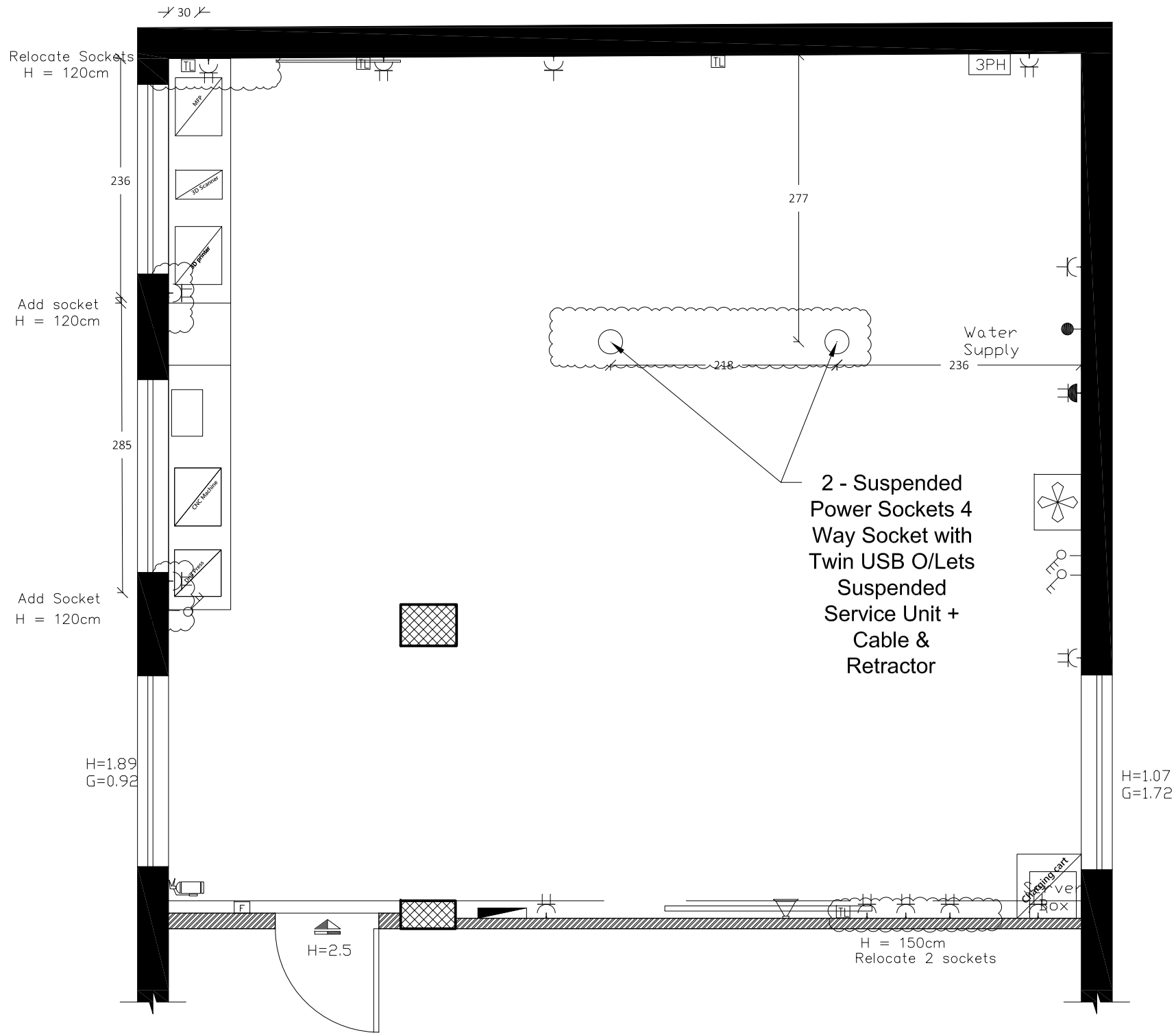
Reference No.: PZA170421T-10036

Designed by:



Enabel - Belgian Development Agency

Lot:	School:	Drawing Title:
Lot 1	Sheikh Saad Boys	Outline plan
Scale:	Date:	Drawing Code:
1:50	8/12/2022	SSB-4



Notes

- (1) All Dimensions Are In Cm.
- (2) All Levels Are In Meter
- (3) Any Missing or Unclear Detail And All Fastening Systems For All Elements Shall be Approved by The Supervisor.

Legend:

- Stone Wall
- Brick Wall
- Reinforced Concrete
- Gypsum Wall
- Main Electrical Board
- 3 Phases
- Single Socket
- Twin Socket
- Server Box
- Projector
- Single Socket - W.P.
- Twin Socket - W.P.
- Wire Board
- CAM
- Camera
- Sound System
- Single Switch
- Fire Extinguisher
- Fire Alarm
- Double Switch
- Triple Switch
- Telephone
- T.V.
- Ventilation Fan
- Gas Supply Box
- Water Supply Box
- A.C.

REVISIONS

NO.	DRAWINGS	DATE
(1)		
(2)		
(3)		

Contracting Authority:



Enabel - Belgian Development Agency

Funded By:



Contract Title:

Public works contract for Fablab Transformation Works and Furniture Supply in Schools in East Jerusalem

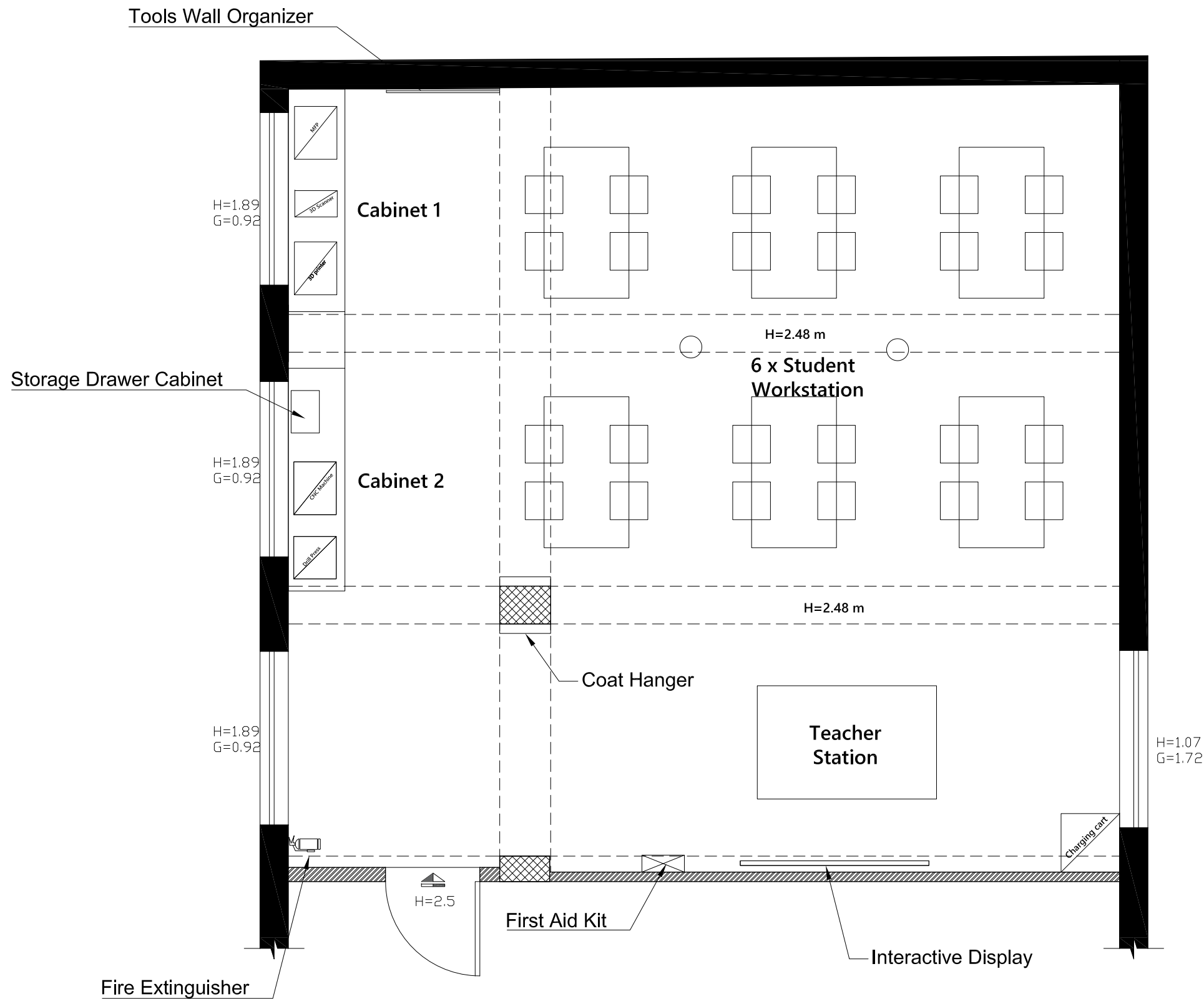
Reference No.: PZA170421T-10036

Designed by:



Enabel - Belgian Development Agency

Lot:	School:	Drawing Title:
Lot 1	Sheikh Saad Boys	Electrical Plan
Scale:	Date:	Drawing Code:
1:50	8/12/2022	SSB-5



Notes

(1) All Dimensions Are In Cm.
(2) All Levels Are In Meter
(3) Any Missing or Unclear Detail And All Fastening Systems For All Elements Shall be Approved by The Supervisor.

Legend:

Stone Wall

Brick Wall

Reinforced Concrete

Gypsum Wall

Main Electrical Board

3 Phases

Single Socket

Twin Socket

Server Box

Projector

Single Socket -W.P.

Twin Socket -W.P.

Wire Board

CAM

Camera

Sound System

Single Switch

Fire Extinguisher

Fire Alarm

Double Switch

Triple Switch

Telephone

T.V.

Ventilation Fan

Gas Supply Box

Water Supply Box

A.C.

REVISIONS

NO.	DRAWINGS	DATE
(1)		
(2)		
(3)		

Contracting Authority:

Enabel

Enabel - Belgian Development Agency

Funded By:

Belgium
partner in development

This Project is Funded by

EUROPEAN UNION

Contract Title:

Public works contract for Fablab Transformation Works and Furniture Supply in Schools in East Jerusalem

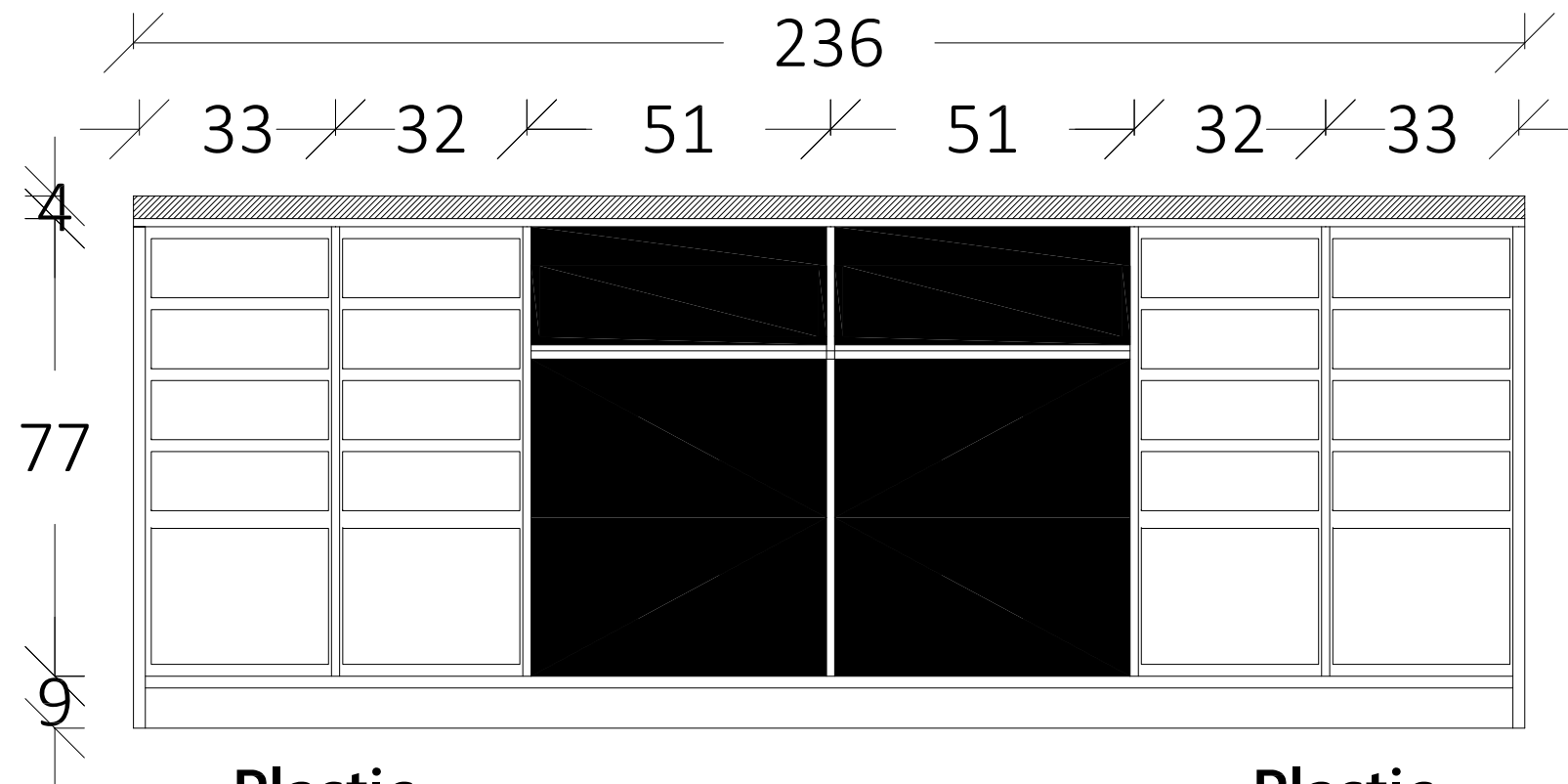
Reference No.: PZA170421T-10036

Designed by:

Enabel

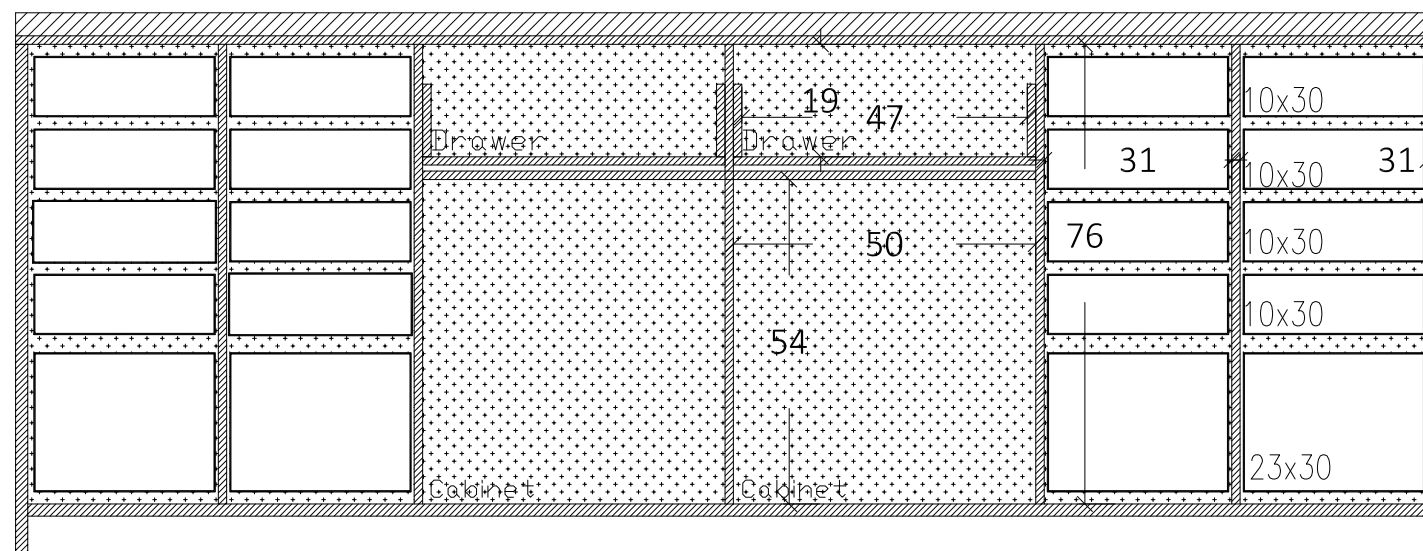
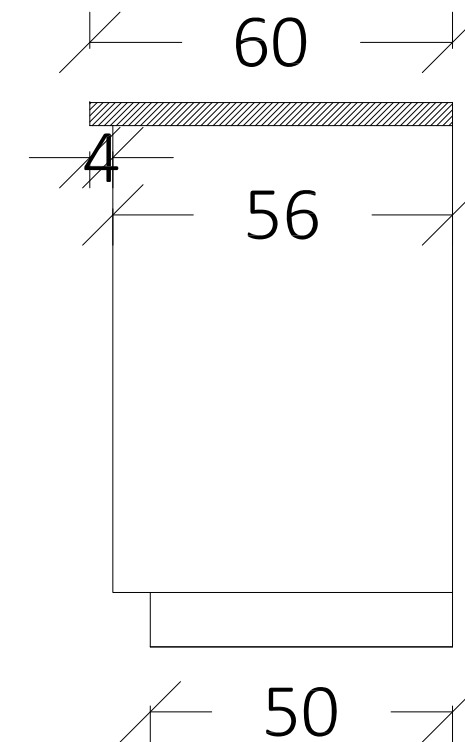
Enabel - Belgian Development Agency

Lot:	School:	Drawing Title:
Lot 1	Sheikh Saad Boys	Furniture Plan
Scale:	Date:	Drawing Code:
1:50	8/12/2022	SSB-6



Plastic
Removable
Shelves

Plastic
Removable
Shelves



8 Small Plastic Removal Drawers 10x30cm - on each side
2 Medium Plastic Removal Drawers 23x30cm - on each side

Notes

- (1) All Dimensions Are In Cm.
- (2) All Levels Are In Meter
- (3) Any Missing or Unclear Detail And All Fastening Systems For All Elements Shall be Approved by The Supervisor.

Legend:

- Stone Wall
- Brick Wall
- Reinforced Concrete
- Gypsum Wall
- Main Electrical Board
- 3 Phases
- Single Socket
- Twin Socket
- Server Box
- Projector
- Single Socket -W.P.
- Twin Socket -W.P.
- Wire Board
- CAM
- Camera
- Sound System
- Single Switch
- Fire Extinguisher
- Fire Alarm
- Double Switch
- Triple Switch
- Telephone
- T.V.
- Ventilation Fan
- Gas Supply Box
- Water Supply Box
- A.C.

REVISIONS

NO.	DRAWINGS	DATE
(1)		
(2)		
(3)		

Contracting Authority:



Enabel - Belgian Development Agency

Funded By:



Contract Title:

Public works contract for Fablab Transformation Works and Furniture Supply in Schools in East Jerusalem

Reference No.: PZA170421T-10036

Designed by:



Enabel - Belgian Development Agency

Lot:	School:	Drawing Title:
ALL	All Schools	Cabinet Detail
Scale:	Date:	Drawing Code:
1:50	8/12/2022	DET-1

Notes

- (1) All Dimensions Are In Cm.
(2) All Levels Are In Meter
(3) Any Missing or Unclear Detail And All Fastening Systems For All Elements Shall be Approved by The Supervisor.

Legend:

- Stone Wall
- Brick Wall
- Reinforced Concrete
- Gypsum Wall
- Main Electrical Board
- 3 Phases
- Single Socket
- Twin Socket
- Server Box
- Projector
- Single Socket -W.P.
- Twin Socket -W.P.
- Wire Board
- CAM
- Camera
- Sound System
- Single Switch
- Fire Extinguisher
- Fire Alarm
- Double Switch
- Triple Switch
- Telephone
- T.V.
- Ventilation Fan
- Gas Supply Box
- Water Supply Box
- A.C.

REVISIONS

NO.	DRAWINGS	DATE
(1)		
(2)		
(3)		

Contracting Authority:



Enabel - Belgian Development Agency

Funded By:



Contract Title:

Public works contract for Fablab Transformation Works and Furniture Supply in Schools in East Jerusalem

Reference No.: PZA170421T-10036

Designed by:

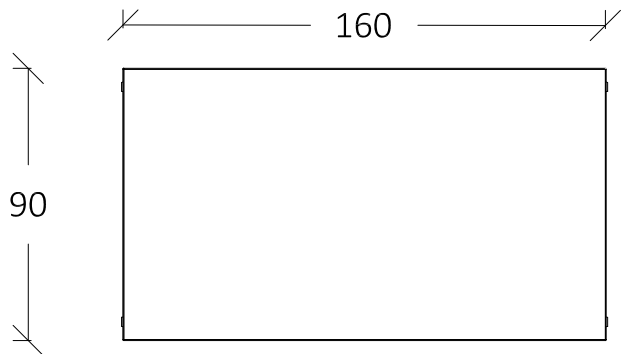


Enabel - Belgian Development Agency

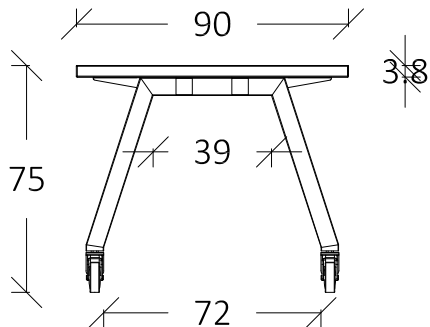
Lot:	School:	Drawing Title:
ALL	All Schools	Workstations Detail
Scale:	Date:	Drawing Code:
1:50	8/12/2022	DET-2

Detail Drawing of Student Workstation

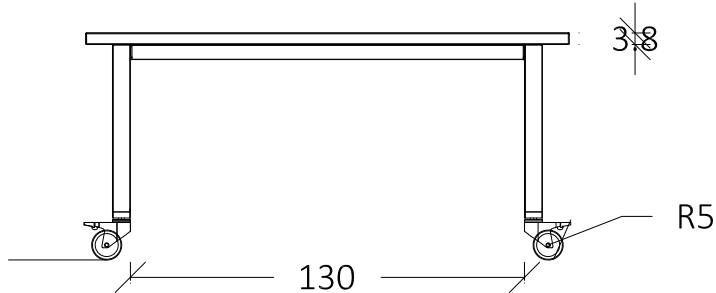
TOP View



Front View

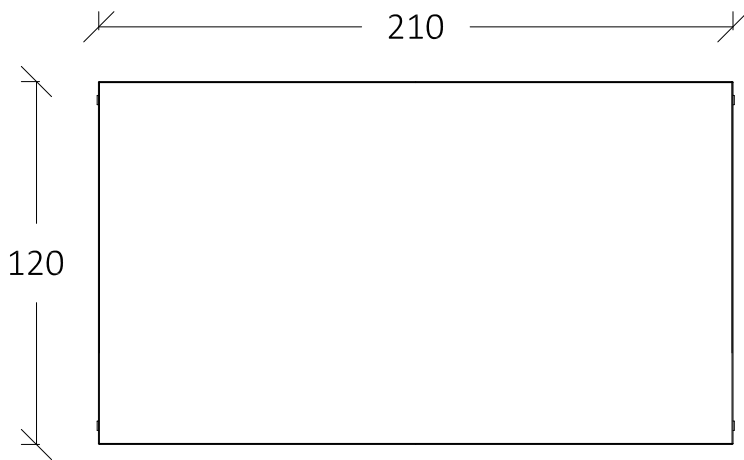


Side View

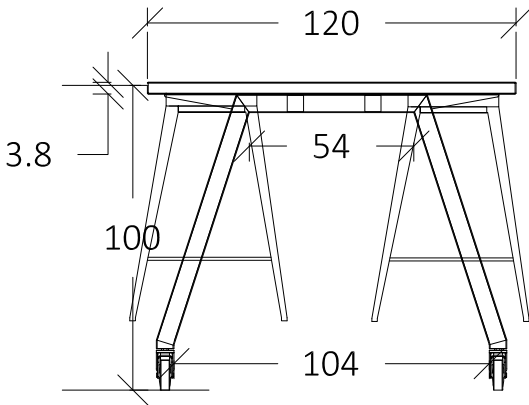


Detail Drawing of Teacher Station

TOP View



Front View



Side View

