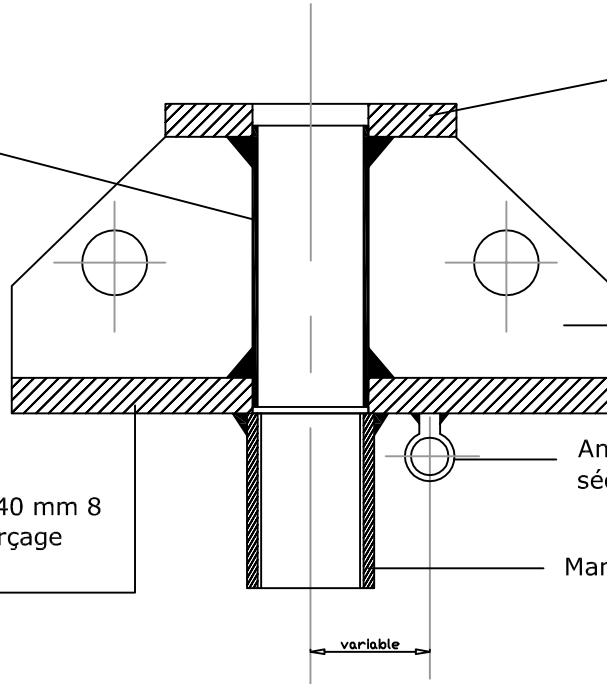


TETE FORAGE INOX

Tube inox dia
variable ep variable
longueur 160 mm

Bride inox DN variable
dia ext variable 4
trous dia variable



2 goussets inox 140x140mm

Anneau inox à souder pour cable inox
sécurité

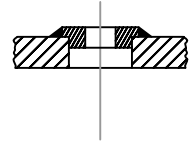
Bride inox dia ext 340 mm 8
trous dia 22 mm perçage
central dia variable

Manchon fileté inox dia variable à souder

variable

VUE F-F

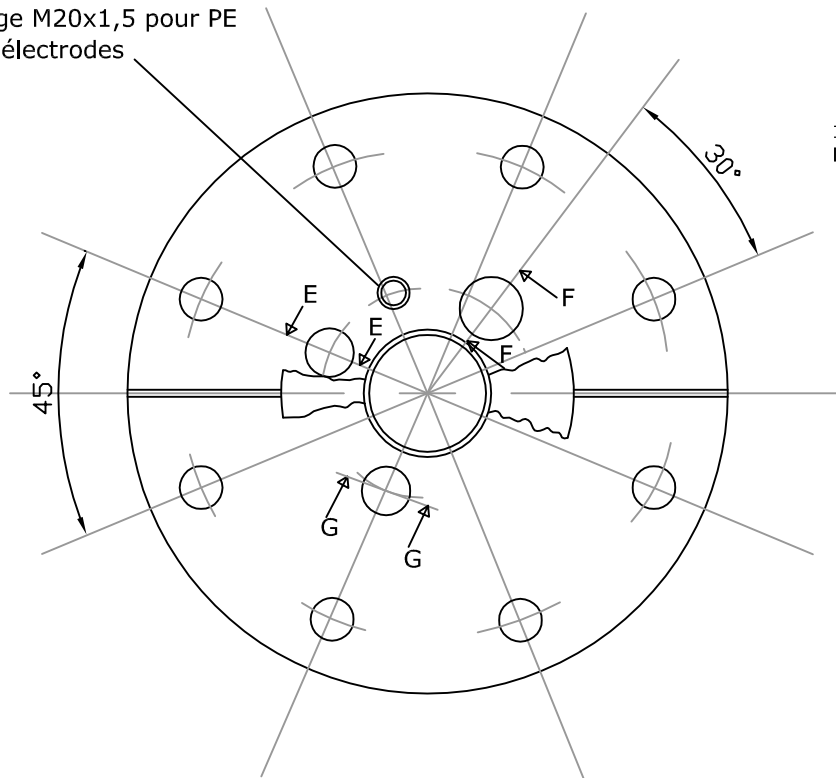
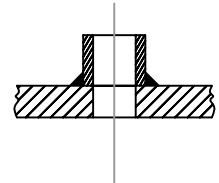
Rondelle inox à souder Taraudage M20x1.5
pour Pe cable 4x2.5mm²
Taraudage M32x1.5 pour PE cable 4x4mm
cable 4x10mm²
DIA 43.5mm sur rayon 80mm



Taraudage M20x1,5 pour PE
3 cables électrodes

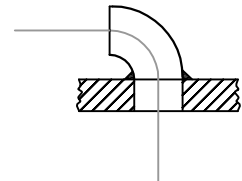
VUE G-G

1/2 mamelon 1" à souder + BOUCHON
DIA 27mm sur rayon 70mm



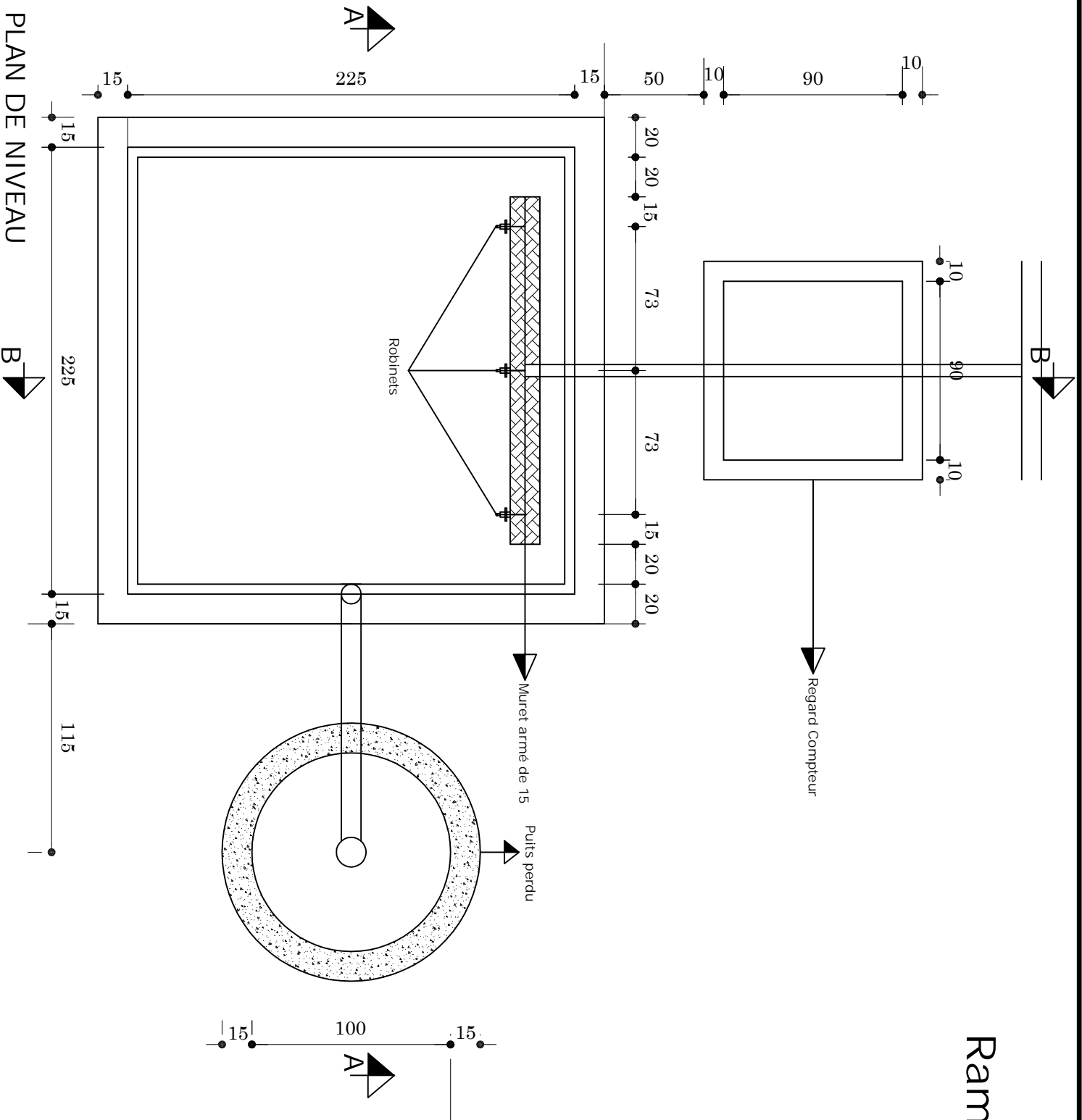
VUE E-E

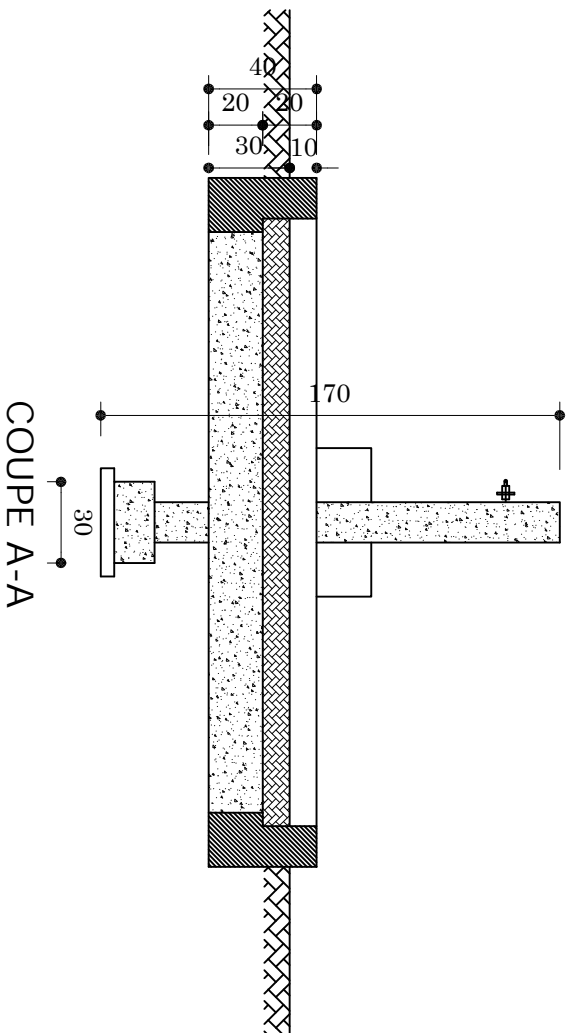
Coude inox 1" à souder
DIA 27mm sur rayon 80mm



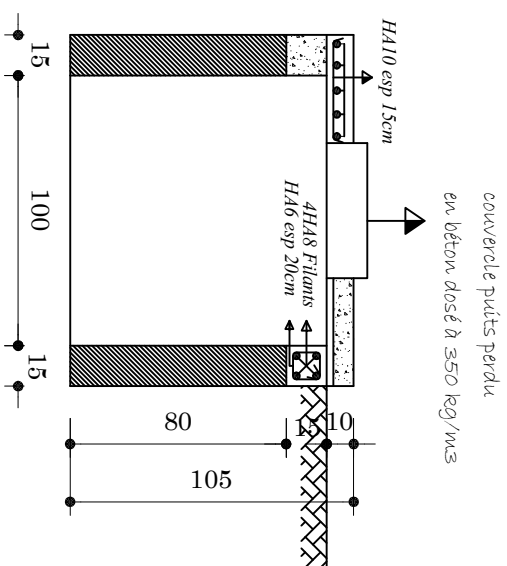
TÊTE DE FORAGE - BRIDE INOX

Rampe à 3 Robinets

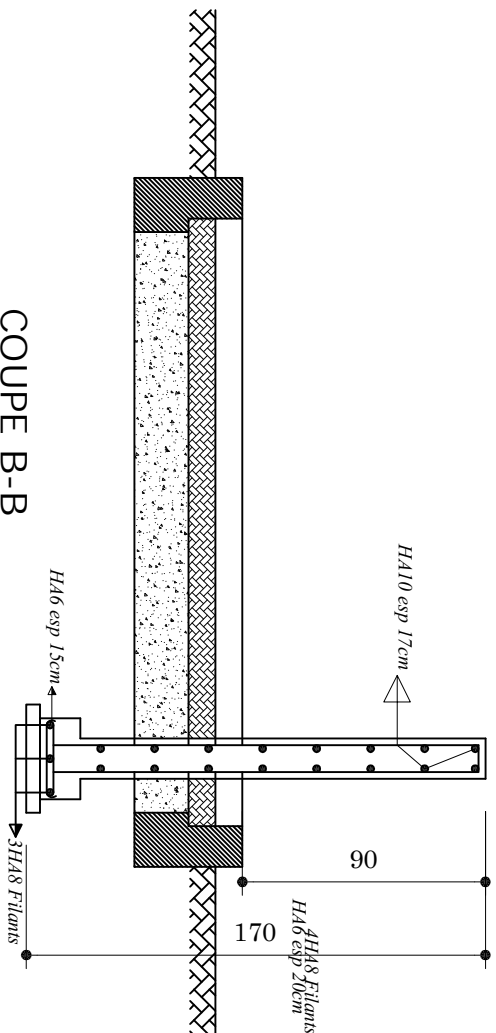




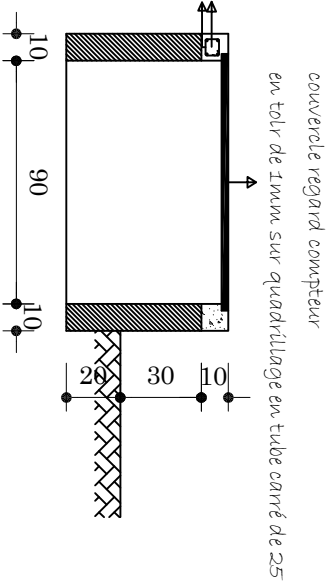
COUPE A-A



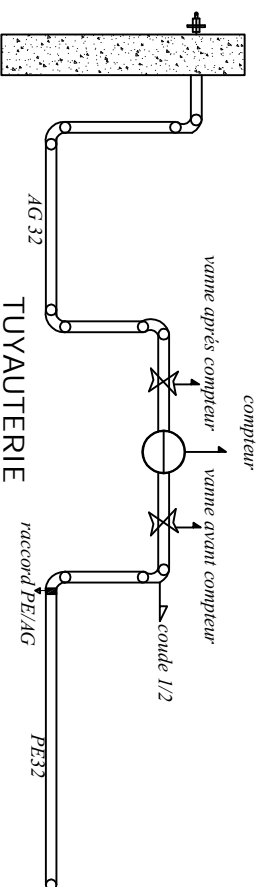
couvercle puits perdu
en béton dosé à 350 kg/m³



COUPE B-B



couvercle regard compteur
en tôle de 1mm sur quadrillage en tube carré de 25



TUYAUTERIE

Rampe à 3 Robinets

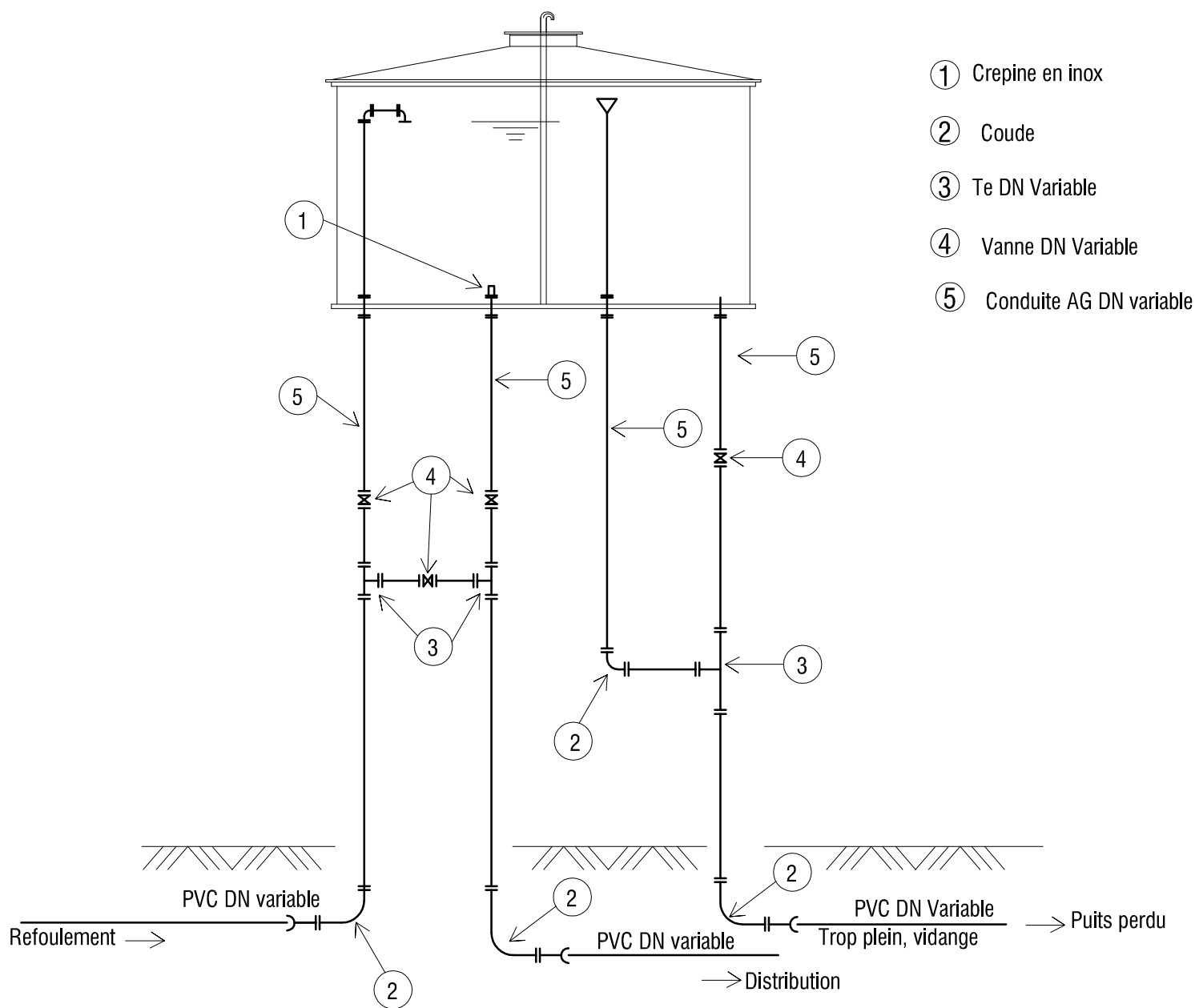
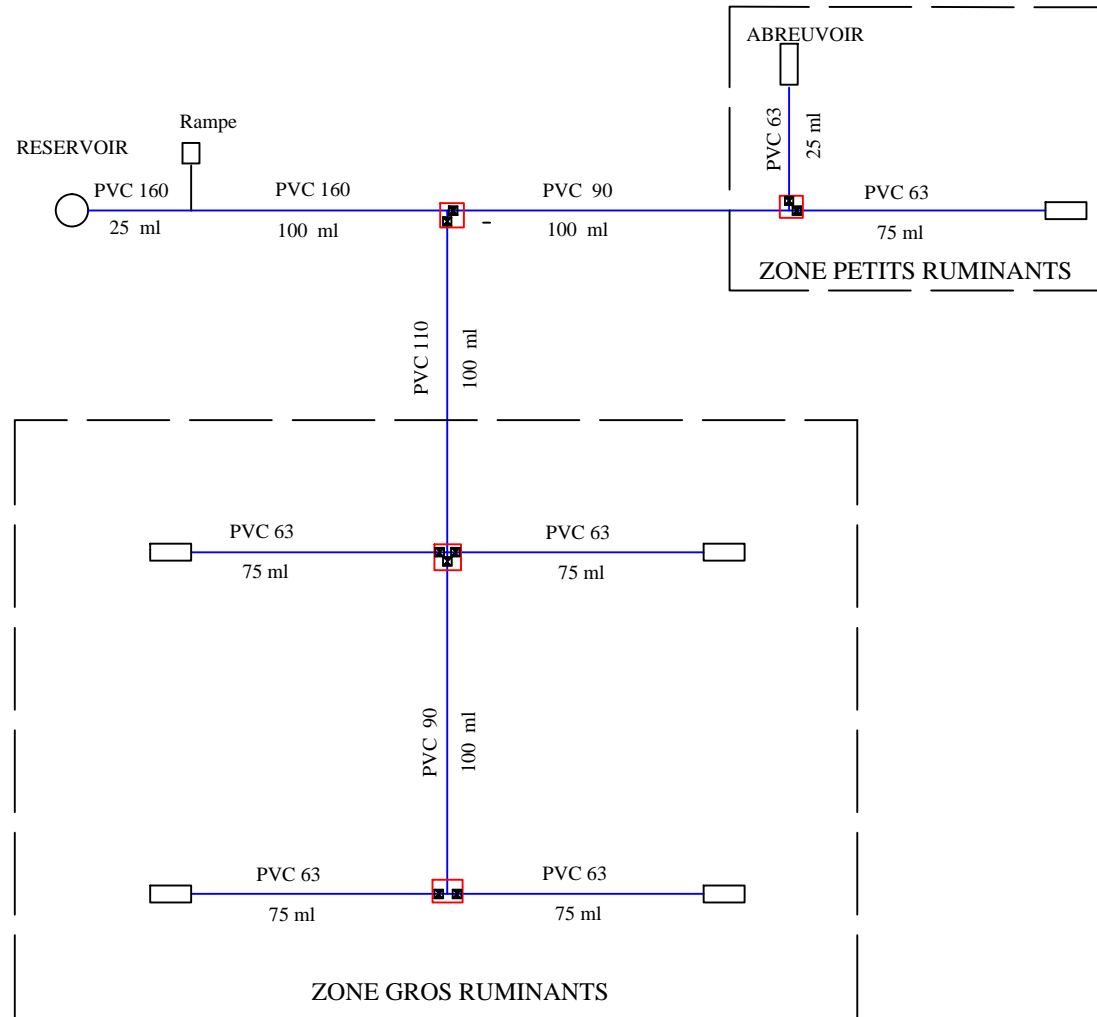
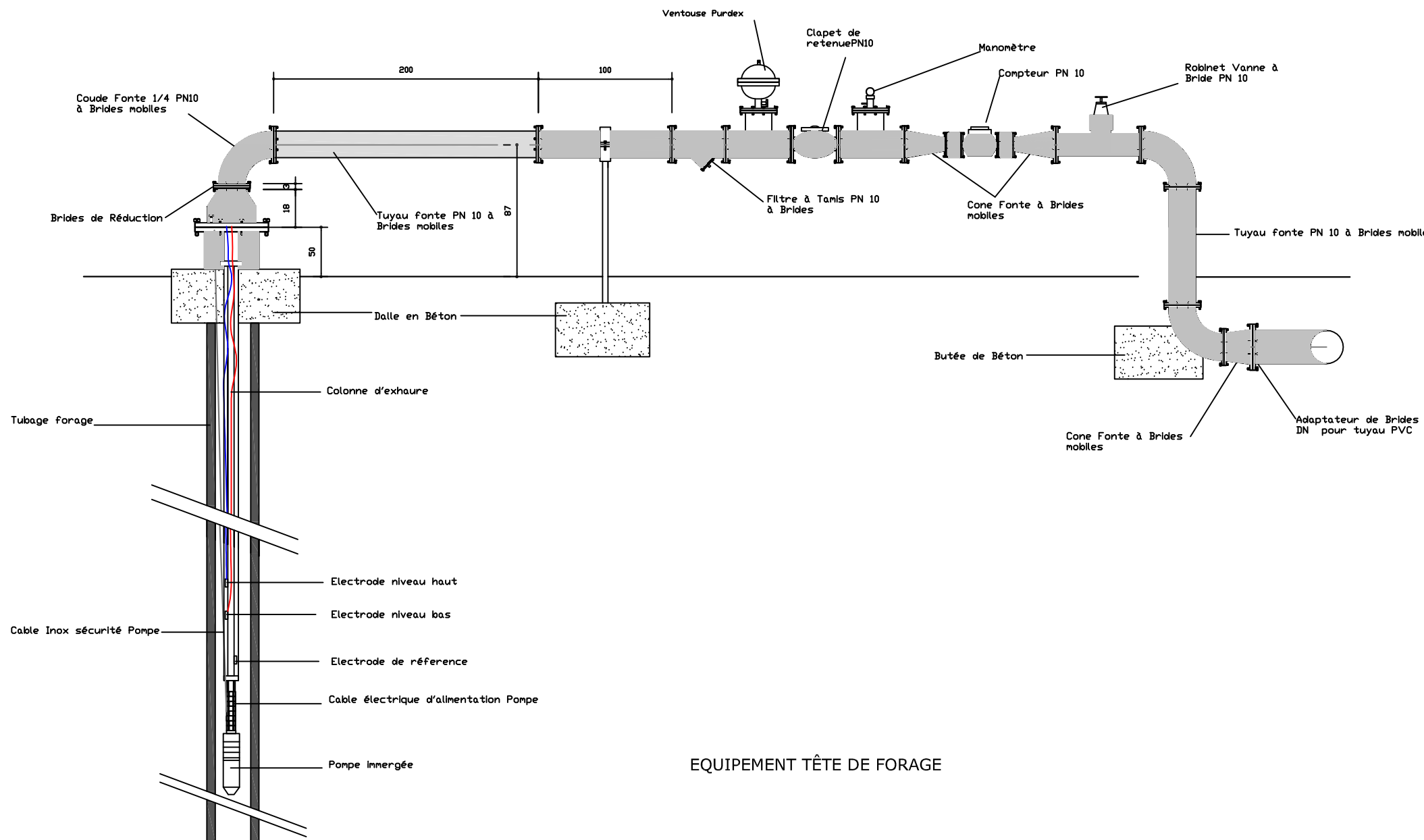


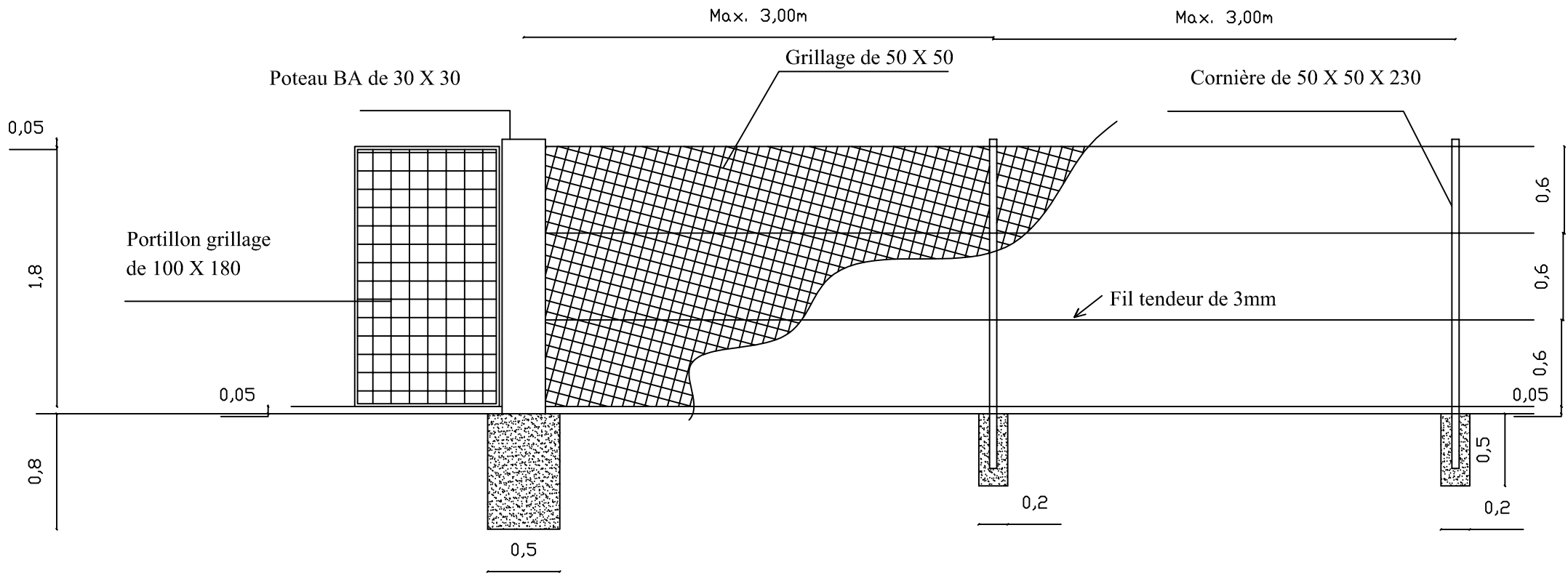
SCHÉMA DE PRINCIPE: RACCORDEMENT HYDRAULIQUE

PLAN TYPE STATION DE POMPAGE PASTORALE



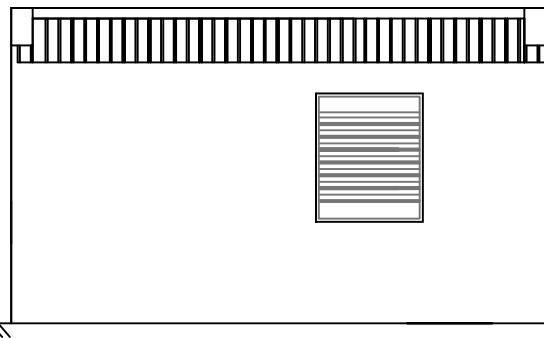


EQUIPEMENT TÊTE DE FORAGE

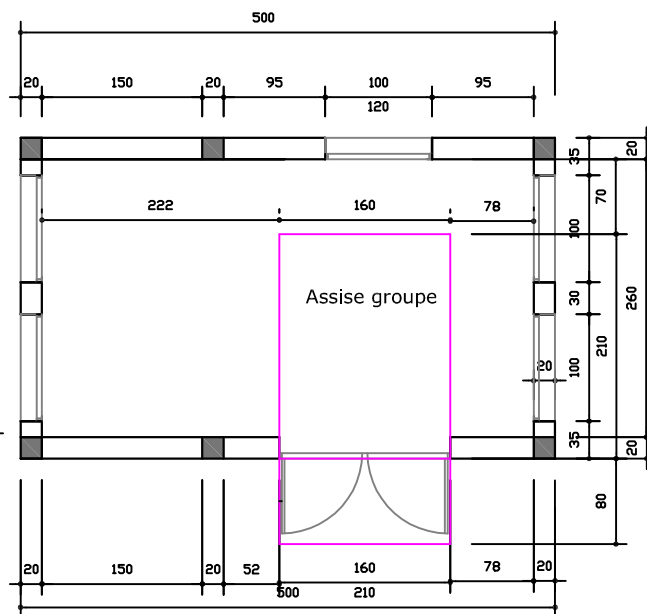


DETAILS CLÔTURE GRILLAGEE

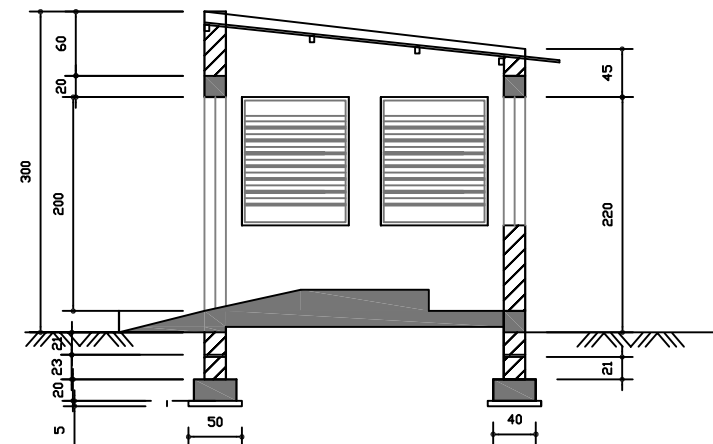
FACADE ARRIERE



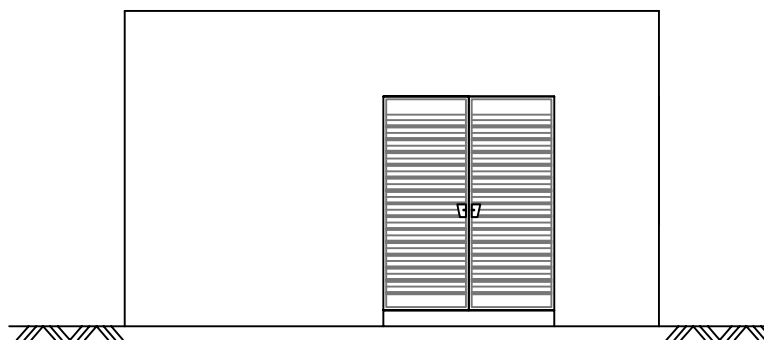
VUE EN PLAN



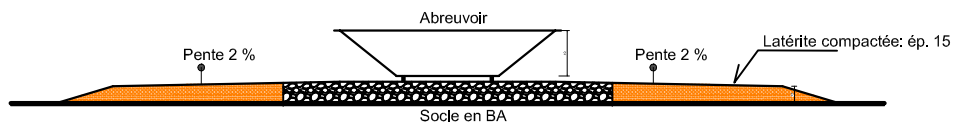
COUPE A.A



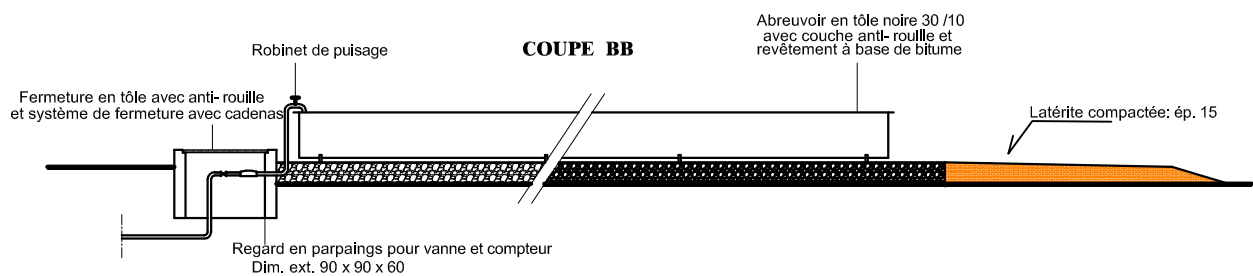
FACADE PRINCIPALE



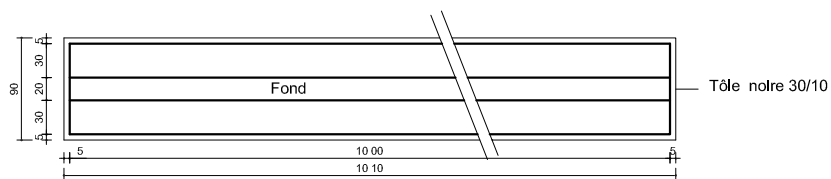
Local Abri groupe électrogène



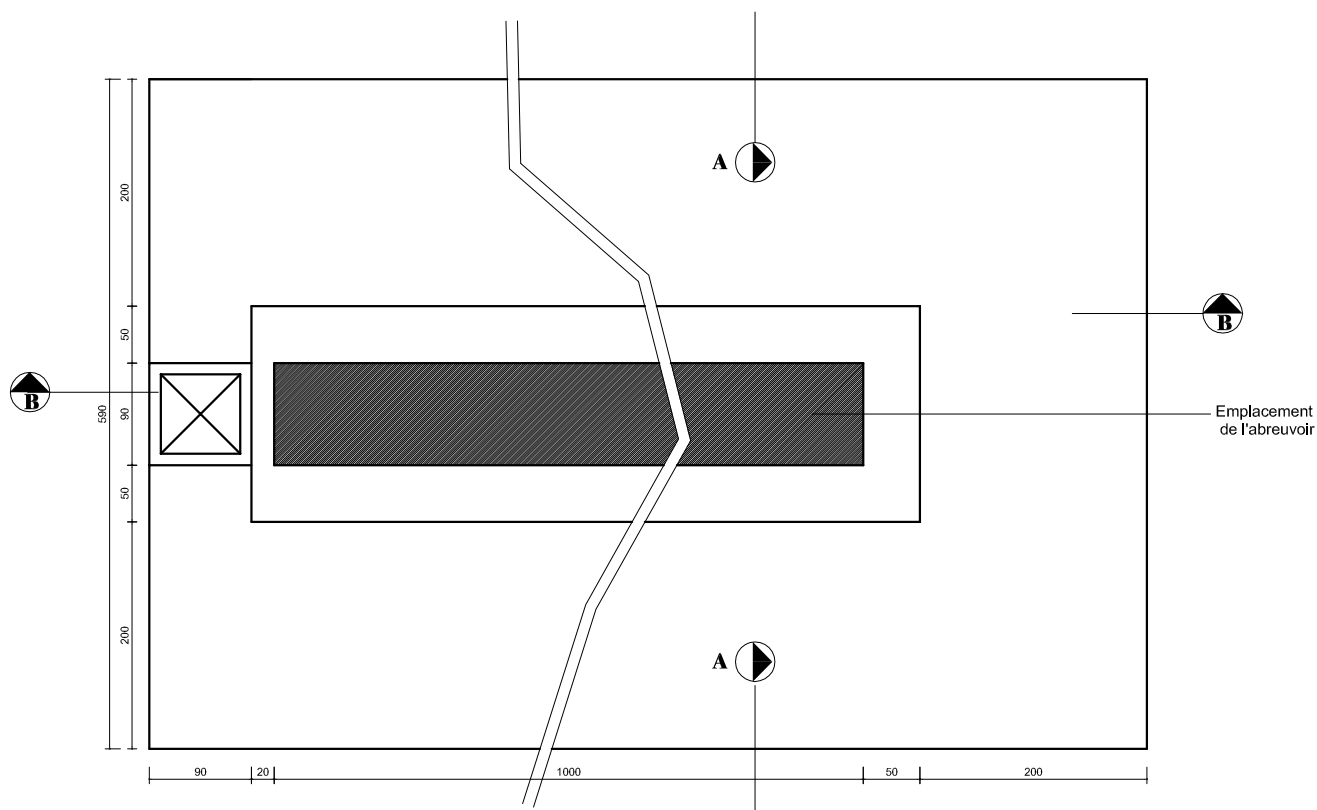
COUPE AA



COUPE BB



**VUE DE DESSUS DE L'ABREUVOIR
(Dim. Int. 10 m x 0,8 m x 0,4 m)**



**VUE DE DESSUS DU BLOC EN BA
pour ouvrages de l'abreuvoir et antibourbier**

ABREUVOIR METALLIQUE