



## Tender Specifications

### **Public service contract for the Design and Works Supervision of Four Eco-Friendly Schools in Palestine**

- Lot 1 – One school in Hebron
- Lot 2 – Two schools in Gaza
- Lot 3 – One school in Al-Ezariyeh

Open procedure

External reference: PSE22001-10011

Tenderer:

## Table of contents

<b>1</b>	<b>General remarks.....</b>	<b>7</b>
1.1	Derogations from the General Implementing Rules .....	7
1.2	Contracting authority.....	7
1.3	Institutional framework of Enabel .....	7
1.4	Rules governing the public contract .....	8
1.5	Definitions .....	9
1.6	Processing of personal data by the contracting authority and confidentiality.....	10
1.6.1	Processing of personal data by the contracting authority.....	10
1.6.2	Confidentiality.....	11
1.7	Deontological obligations .....	11
1.8	Applicable law and competent courts .....	12
<b>2</b>	<b>Subject-matter and scope of the public contract.....</b>	<b>13</b>
2.1	Type of contract .....	13
2.2	Subject-matter of the public contract.....	13
2.3	Lots.....	13
2.4	Items .....	13
2.5	Duration of the public contract.....	14
2.6	Variants .....	14
2.7	Option .....	14
2.8	Quantities.....	14
<b>3</b>	<b>Subject-matter and scope of the public contract.....</b>	<b>15</b>
3.1	Award procedure .....	15
3.2	Publication .....	15
3.2.1	Official notification.....	15
3.2.2	Enabel publication.....	15
3.3	Information .....	15
3.4	Tender .....	16
3.4.1	Data to be included in the tender .....	16
3.4.2	Period the tender is valid .....	17
3.4.3	Determination of prices .....	17
3.4.3.1	Elements included in the price.....	17
3.4.4	How to submit tenders? .....	18
3.4.5	Change or withdrawal of a tender that has already been submitted.....	19

3.4.6	Opening of Tenders.....	20
3.4.7	Selection of tenderers.....	20
3.4.7.1	Exclusion grounds .....	20
3.4.7.2	Selection criteria .....	21
3.4.7.3	Modalities relating to tender examination and regularity of the tenders.....	21
3.4.7.4	Award criteria.....	22
3.4.7.5	Final score .....	23
3.4.7.6	Awarding the public contract.....	23
3.4.8	Concluding the public contract .....	23
<b>4</b>	<b>Specific contractual and administrative conditions .....</b>	<b>25</b>
4.1	Managing official (Art. 11) .....	25
4.2	Subcontractors (Art. 12 to 15) .....	25
4.3	Confidentiality (art. 18).....	26
4.4	Protection of personal data .....	26
4.4.1	Processing of personal data by the contracting authority.....	26
4.4.2	Processing of personal data by a subcontractor.....	27
4.5	Intellectual property (Art. 19 to 23).....	27
4.6	Performance bond (Art. 25 to 33).....	28
4.7	Conformity of performance (Art. 34).....	29
4.8	Zero tolerance Sexual exploitation and abuse.....	29
4.9	Changes to the public contract (Art. 37 to 38/19) .....	29
4.9.1	Replacement of the contractor (Art. 38/3).....	29
4.9.2	Revision of prices (Art. 38/7) .....	29
4.9.3	Indemnities following the suspensions ordered by the contracting authority during performance (Art. 38/12) .....	30
4.9.4	Unforeseen circumstances.....	30
4.10	Preliminary technical acceptance (Art. 42).....	30
4.11	Performance modalities (Art. 146 et seq.).....	30
4.11.1	Deadlines and terms (Art. 147) .....	30
4.11.1.1	Item 1: Design services (fixed block) .....	30
4.11.1.2	Item 2: Works Supervision and Management Services (conditional block) .....	31
4.11.2	Place where the services must be performed and formalities (Art. 149).....	31
4.12	Inspection of the services (Art. 150).....	32
4.13	Liability of the service provider (Art. 152-153) .....	32
4.14	Means of action of the contracting authority (Art. 44-51 and 154-155) .....	32
4.14.1	Failure of performance (Art. 44) .....	32

4.14.2	Fines for delay (Art. 46 and 154).....	33
4.14.3	Measures as of right (Art. 47 and 155) .....	33
4.15	End of the public contract.....	34
4.15.1	Acceptance of the services performed (Art. 64-65 and 156).....	34
4.15.2	Invoicing and payment of services (Art. 66 to 72 – 160) .....	34
4.15.2.1	Payments for Design Works.....	35
4.15.2.1.1	Payments for Management and Supervision Services .....	35
4.16	Litigation (Art. 73) .....	36
<b>5</b>	<b>Terms of reference .....</b>	<b>38</b>
5.1	Introduction .....	38
5.1.1	Enabel in Palestine .....	38
5.1.2	New portfolio .....	39
5.1.3	QEL project.....	39
5.1.4	Palestine’s NDC .....	40
5.2	Objective of the consultancy .....	40
5.2.1	Item 1 – Design Services .....	41
5.2.2	Item 2 – Works supervision and management services .....	42
5.3	School programme and location.....	44
5.3.1	Lot 1 - Bakri school in Hebron .....	44
5.3.1.1	Site location .....	44
5.3.1.2	Programme .....	44
5.3.2	Lot 2 – Two schools in Gaza .....	46
5.3.2.1	Site location .....	46
5.3.2.2	Gaza Basic School Programme .....	46
5.3.2.3	Gaza Secondary School Programme .....	47
5.3.3	Lot 3 - Riad Al-Aqsa Basic school.....	48
5.3.3.1	Site location .....	48
5.3.3.2	Programme .....	48
5.4	Design standards and specifications.....	49
5.4.1	Environmental sustainability.....	49
5.4.1.1	Climate change targets .....	49
5.4.1.2	Water consumption and treatment.....	51
5.4.1.3	Raw material consumption .....	52
5.4.1.4	Biodiversity.....	53
5.4.1.5	Local materials .....	53

5.4.1.6	Local pollution.....	53
5.4.1.7	Environmental Certification .....	54
5.4.2	Social sustainability .....	54
5.4.2.1	Safety and health .....	54
5.4.2.2	Inclusivity .....	55
5.4.2.3	Comfort .....	56
5.4.3	Economic sustainability.....	56
5.4.3.1	Replicability of innovations.....	56
5.4.3.2	Low cost and easy maintenance .....	57
5.4.4	Educational standards.....	57
5.4.4.1	Classroom environment.....	57
5.4.4.2	Child friendliness.....	58
5.5	Performance modalities and deliverables .....	58
5.5.1	Reconnaissance and Program Analysis Phase.....	58
5.5.2	Conceptual phase.....	59
5.5.3	Schematic design phase .....	59
5.5.4	Preliminary design phase .....	60
5.5.5	Detailed design phase .....	60
5.5.6	Permits .....	61
5.5.7	Tender annexes documents.....	61
5.6	Personnel specification .....	62
5.6.1	Personnel for item 1 - design services .....	62
5.6.2	Personnel for item 2 – works supervision and management services.....	63
<b>6</b>	<b>Forms.....</b>	<b>65</b>
6.1	Form 1 - Identification form.....	65
6.2	Form 2 – Integrity statement for the tenderers .....	66
6.3	Form 3 - Declaration on honour – exclusion criteria .....	67
6.4	Attachment 1 - Power of attorney .....	69
6.5	Attachment 2 - Incorporation certificate .....	70
6.6	Attachment 3 - Certification of clearance with regards to the payments of social security contributions .....	71
6.7	Attachment 4 - Certification of clearance with regards to the payments of applicable taxes ..	72
6.8	Attachment 5 - Declaration from a competent authority of not being in a situation of bankruptcy or insolvency.....	73
6.9	Form 4 - List of the main similar services.....	74
6.10	Attachment 6 - Certificates of completion.....	85

6.11	Form 5A – prices – Lot 1 (One school in Hebron) .....	86
6.12	Form 5B – prices – Lot 2 – (Two schools in Gaza) .....	87
6.13	Form 5C – prices – Lot 3 – (One school in Al-Ezariyeh).....	88
6.14	Form 6 - Awarding Preferences .....	89
6.15	Attachment 7 - Methodology.....	90
6.16	Form 7 - Workplan .....	91
6.17	Form 8 - Key experts .....	92
6.17.1	Lot n°1 – Item 1 – Design services .....	94
6.17.2	Lot n°1 – Item 2 – Works supervision and management services .....	95
6.17.3	Lot n°2 – Item 1 – Design services .....	96
6.17.4	Lot n°2 – Item 2 – Works supervision and management services .....	97
6.17.5	Lot n°3 – Item 1 – Design Services .....	98
6.17.6	Lot n°3 – Item 2 – Works supervision and management services .....	99
6.17.7	Both lots 1+3 – Item 1 – Design services .....	100
6.17.8	Both lots 1+3 – Item 2 – Works supervision and management services .....	101
6.17.9	All lots – Item 1 – Design services .....	102
6.17.10	All lots – Item 2 – Works supervision and management services.....	103
6.18	Attachment 8 - CVs of all mentioned personnel.....	105
6.19	Form 9 - Subcontractors .....	106
6.20	Form 10 – Checklist.....	107

# 1 General remarks

## 1.1 Derogations from the General Implementing Rules

- §1 Section 4, ‘*Specific contractual and administrative conditions*’ of these Tender Specifications (CSC/Cahier Spécial des Charges) holds the specific administrative and contractual provisions that apply to this public contract by way of derogation from the Royal Decree of 14.01.2013 or as a complement or an elaboration thereof.
- §2 These Tender Specifications derogate Articles 25. §2 and 26 of the General Implementing Rules – GIR (Royal Decree of 14 January 2013).

## 1.2 Contracting authority

- §3 The contracting authority of this public contract is Enabel, the Belgian development agency, public-law company with social purposes, with its registered office at Rue Haute 147, 1000 Brussels in Belgium (enterprise number 0264.814.354, RPM/RPR Brussels). Enabel has the exclusive competence for the execution, in Belgium and abroad, of public service tasks of direct bilateral cooperation with partner countries. Moreover, it may also perform other development cooperation tasks at the request of public interest organisations, and it can develop its own activities to contribute towards realisation of its objectives.
- §4 For this public contract, Enabel is represented by Ms. Christelle Jocquet, Resident Representative of Enabel in Palestine.

## 1.3 Institutional framework of Enabel

- §5 The general framework of reference in which Enabel operates is:
- The Belgian Law on Development Cooperation of 19 March 2013<sup>1</sup>;
  - The Belgian Law of 21 December 1998 establishing the Belgian Technical Cooperation as a public-law company<sup>2</sup>;
  - The Belgian Law of 23 November 2017 changing the name of the Belgian Technical Cooperation and defining the missions and functioning of Enabel, the Belgian development agency, published in the Belgian Official Gazette on 11 December 2017.
- §6 The following initiatives are also guiding Enabel in its operations and are given as main examples:
- In the field of international cooperation: the United Nations Sustainable Development Goals and the Paris Declaration on the harmonisation and alignment of aid;
  - In the field of the fight against corruption: the Law of 8 May 2007 approving the United Nations Convention against Corruption, adopted in New York on 31 October 2003<sup>3</sup>, as well as the Law of 10 February 1999 on the Suppression of

---

<sup>1</sup> Belgian Official Gazette of 30 December 1998, of 17 November 2001, of 6 July 2012, of 15 January 2013 and of 26 March 2013.

<sup>2</sup> Belgian Official Gazette of 1 July 1999.

<sup>3</sup> Belgian Official Gazette of 18 November 2008.

Corruption transposing the Convention on Combating Bribery of Foreign Public Officials in International Business Transactions;

- In the field of Human Rights: the United Nations' Universal Declaration of Human Rights (1948) as well as the 8 basic conventions of the International Labour Organization<sup>4</sup> on Freedom of Association (C. n°87), on the Right to Organise and Collective Bargaining (C. n°98), on Forced Labour (C. n°29 and 105), on Equal Remuneration and on Discrimination in Respect of Employment (C. n°100 and 111), on Minimum Age for Admission to Employment (C. n°138), on the Prohibition of the Worst Forms of Child Labour (C. n°182);
- In the field of environmental protection: The Climate Change Framework Convention of Paris, 12 December 2015;
- The first Management Contract contracting Enabel and the Belgian federal State (approved by the Royal Decree of 17.12.2017, Belgian Official Gazette 22.12.2017) that sets out the rules and the special conditions for the execution of public service tasks by Enabel on behalf of the Belgian State.
- Enabel's Code of Conduct of January 2019, Enabel's Policy regarding sexual exploitation and abuse of June 2019 and Enabel's Policy regarding fraud and corruption risk management of June 2019;

## 1.4 Rules governing the public contract

§7 The following, among other things, apply to this public contract:

- The Law of 17 June 2016 on public procurement<sup>5</sup>;
- The Law of 17 June 2013 on justifications, notification and legal remedies for public contracts and certain contracts for works, supplies and services<sup>6</sup>;
- The Royal Decree of 18 April 2017 on the awarding of public contracts in the classic sectors<sup>7</sup>;
- The Royal Decree of 14 January 2013 establishing the General Implementing Rules for public procurement and for concessions for public works<sup>8</sup>;
- Circulars of the Prime Minister with regards to public procurement.
- All Belgian regulations on public contracts can be consulted on [www.publicprocurement.be](http://www.publicprocurement.be).
- Enabel's Policy regarding sexual exploitation and abuse – June 2019;
- Enabel's Policy regarding fraud and corruption risk management – June 2019;
- Regulation (EU) 2016/679 of the European Parliament and of the Council of 27 April 2016 on the protection of natural persons with regard to the processing of personal data and on the free movement of such data (General Data Protection Regulation – 'GDPR'), and repealing Directive 95/46/EC.

---

<sup>4</sup> <http://www.ilo.org/ilolex/french/convdisp1.htm>.

<sup>5</sup> Belgian Official Gazette 14 July 2016.

<sup>6</sup> Belgian Official Gazette of 21 June 2013.

<sup>7</sup> Belgian Official Gazette 9 May 2017.

<sup>8</sup> Belgian Official Gazette 27 June 2017.



- Law of 30 July 2018 on the protection of natural persons with regard to the processing of personal data. ;

All Belgian regulations on public contracts can be consulted on [www.publicprocurement.be](http://www.publicprocurement.be); Enabel's Code of Conduct and the policies mentioned above can be consulted on Enabel's website via <https://www.enabel.be/content/integrity-desk>.

## 1.5 Definitions

§8 The following definitions apply to this contract:

- The tenderer: An economic operator submitting a tender;
- The contractor/ service provider: The tenderer to whom the public contract is awarded;
- The contracting authority: Enabel, represented by the Resident Representative of Enabel in Palestine.
- The tender: Commitment of the tenderer to perform the public contract under the conditions that he has submitted;
- Days: In the absence of any indication in this regard in the Tender Specifications and the applicable regulations, all days should be interpreted as calendar days;
- Procurement documents: Tender Specifications including the annexes and the documents they refer to;
- Technical specifications: A specification in a document defining the characteristics of a product or a service, such as the quality levels, the environmental and climate performance levels, the design for all needs, including accessibility for people with disabilities, and the evaluation of conformity, of product performance, of the use of the product, safety or dimensions, as well as requirements applicable to the product as regards the name by which it is sold, terminology, symbols, testing and test methods, packaging, marking or labelling, instructions for use, the production processes and methods at every stage in the life cycle of the supply or service, as well as the evaluation and conformity procedures;
- Variant: An alternative method for the design or the performance that is introduced either at the demand of the contracting authority, or at the initiative of the tenderer;
- Option: A minor and not strictly necessary element for the performance of the contract, which is introduced either at the demand of the contracting authority, or at the initiative of the tenderer;
- Inventory: The procurement document which splits up the performance in different items and specifies the quantity or the method to determine the price for each of them;
- General Implementing Rules (GIR): Rules laid down in the Royal Decree of 14 January 2013 establishing the General Implementing Rules for public procurement and for concessions for public works;
- The Tender Specifications (Cahier spécial des charges/CSC): This document and its annexes and the documents it refers to;

- BDA: Belgian Public Tender bulletin;
- OJEU: Official Journal of the European Union;
- OECD: Organisation for Economic Cooperation and Development;
- E-tendering: Through the E-tendering platform tenderers can submit and open electronic tenders/requests to participate;
- Corrupt practices: The offer of a bribe, gift, gratuity or commission to any person as an inducement or reward for performing or refraining from any act relating to the award of a contract or performance of a contract already concluded with the contracting authority;
- Litigation: Court action.
- Subcontractor in the meaning of public procurement regulations: The economic operator proposed by a tenderer or contractor to perform part of the contract. The subcontractor is understood as the economic operator with the capacity which the applicant or tenderer relies upon or to whom he entrusts all or part of his engagements.
- Controller in the meaning of the GDPR: the natural or legal person, public authority, agency or other body which, alone or jointly with others, determines the purposes and means of the processing of personal data.
- Sub-contractor or processor in the meaning of the GDPR: a natural or legal person, public authority, agency or other body which processes personal data on behalf of the controller.
- Recipient in the meaning of the GDPR: a natural or legal person, public authority, agency or another body, to which the personal data are disclosed, whether a third party or not.
- Personal data: any information relating to an identified or identifiable natural person ('data subject'); an identifiable natural person is one who can be identified, directly or indirectly, in particular by reference to an identifier such as a name, an identification number, location data, an online identifier or to one or more factors specific to the physical, physiological, genetic, mental, economic, cultural or social identity of that natural person.

## 1.6 Processing of personal data by the contracting authority and confidentiality

### 1.6.1 Processing of personal data by the contracting authority

§9 The contracting authority undertakes to process the personal data that are communicated to it in response to the Call for Tenders with the greatest care, in accordance with legislation on the protection of personal data (General Data Protection Regulation, GDPR). Where the Belgian law of 30 July 2018 on the protection of natural persons with regard to the processing of personal data contains stricter provisions, the contracting authority will act in accordance with said law.

### 1.6.2 Confidentiality

- §10 The tenderer or contractor and Enabel are bound to secrecy vis-à-vis third parties with regards to any confidential information obtained within the framework of this public contract and will only divulge such information to third parties after receiving the prior written consent of the other party. They will disclose this confidential information only among appointed parties involved in the assignment. They guarantee that said appointed parties will be adequately informed of their obligations in respect of the confidential nature of the information and that they shall comply therewith.
- §11 PRIVACY NOTICE OF ENABEL: Enabel takes your privacy serious. We undertake to protect and process your personal data with due care, transparently and in strict compliance with privacy protection legislation. See also: <https://www.enabel.be/content/privacy-notice-enabel>

### 1.7 Deontological obligations

- §12 1.7. Any failure to comply with one or more of the deontological clauses may lead to the exclusion of the candidate, tenderer or contractor from other public procurement for Enabel.
- §13 1.7.2. For the duration of the contract, the contractor and his staff respect human rights and undertake not to go against political, cultural or religious customs of the beneficiary country. The tenderer or contractor is bound to respect fundamental labour standards, which are internationally agreed upon by the International Labour Organisation (ILO), namely the conventions on union freedom and collective bargaining, on the elimination of forced and obligatory labour, on the elimination of employment and professional discrimination and on the abolition of child labour.
- §14 In accordance with Enabel's Policy regarding sexual exploitation and abuse, the contractor and his staff have the duty to behave in an irreproachable manner towards the beneficiaries of the projects and towards the local population in general. They must abstain from any acts that could be considered a form of sexual exploitation or abuse and they must abide by the basic principles and guidelines laid down in this policy.
- §15 Any attempt of a candidate or a tenderer to obtain confidential information, to proceed to illicit arrangements with competitors or to influence the evaluation committee or the contracting authority during the investigation, clarification, evaluation and comparison of tenders and candidates' procedure will lead to the rejection of the application or the tender.
- §16 Moreover, in order to avoid any impression of risk of partiality or connivance in the follow-up and control of the performance of the public contract, it is strictly forbidden to the contractor to offer, directly or indirectly, gifts, meals or any other material or immaterial advantage, of whatever value, to appointees of the contracting authority who are concerned, directly or indirectly, by the follow-up and/or control of the performance of the contract, regardless of their hierarchical rank.
- §17 The public contractor commits to supply, upon the demand of the contracting authority, any supporting documents related to the performance conditions of the contract. The contracting authority will be allowed to proceed to any desk review or on-the-spot check, which it considers necessary to collect evidence to support the presumption of unusual commercial expenditure. Depending on the gravity of the facts observed, the contractor having paid unusual commercial expenditure is liable to have his contract cancelled or to be permanently excluded.

§18 In accordance with Enabel's Policy regarding sexual exploitation and abuse of June 2019 and Enabel's Policy regarding fraud and corruption risk management complaints relating to issues of integrity (fraud, corruption, etc.) must be sent to the Integrity desk through the <https://www.enabelintegrity.be> website.

## **1.8 Applicable law and competent courts**

§19 The contract must be performed and interpreted according to Belgian law.

§20 The parties commit to sincerely perform their engagements to ensure the good performance of this contract.

§21 In case of litigation or divergence of opinion between the contracting authority and the contractor, the parties will consult each other to find a solution.

§22 If agreement is lacking, the Brussels courts are the only courts competent to resolve the matter.

## 2 Subject-matter and scope of the public contract

### 2.1 Type of contract

§23 This contract is a public service contract.

### 2.2 Subject-matter of the public contract

§24 This public service contract consists in the performance of “*the design and works supervision of four eco-friendly schools in Palestine*”, in conformity with the conditions of these Tender Specifications.

### 2.3 Lots

§25 The *contract* has three (3) lots, each of which is indivisible. The tenderer may submit a tender for one or both lots. A tender for part of a lot is inadmissible.

§26 The *lots* are:

- Lot 1 – One school in Hebron (Bakri school)
- Lot 2 – Two schools in Gaza
- Lot 3 – One school in Al-Ezariyeh (Riyad Al-Aqsa Basic School)

§27 The description of each lot is included in 5.3 School programme and location, p. 44:

- 5.3.1 Lot 1 - Bakri school in Hebron, p.44
- 5.3.2 Lot 2 – Two schools in Gaza, p.46
- 5.3.3 Lot 3 - Riad Al-Aqsa Basic school, p.48

§28 When *tendering* for several lots, the tenderer may not offer discounts or better conditions in his tender in case these lots were to be awarded to him.

§29 In case of submitting a tender for several lots, The tenderer shall indicate in his tender order of preference for the awarding of these lots using Form 14 Awarding Preferences, p.89.

### 2.4 Items

§30 Each lot of this contract consists of the following items:

- Item 1: Design services (fixed block)
- Item 2: Works Supervision and Management services (conditional block)

§31 The description of each item is included in Part 5 - Terms of reference - 5.2 Objective of the consultancy, p.40:

- 5.2.1 Item 1 – Design Services, p. 41
- 5.2.2 Item 2 – Works supervision and management services, p.42

§32 These items are pooled and form one single contract / one single lot. It is not possible to tender for one or several items and the tenderer must submit price quotations for all items of a same lot.

## 2.5 Duration of the public contract

§33 For each of the lots, the contract starts upon award notification and lasts until 31 December 2026. This duration of the contract shall not to be confused with period of performance (see “4.11 Performance modalities (Art. 146 et seq.), p.30”.

## 2.6 Variants

§34 Variants are not permitted.

§35 Each tenderer may submit only one tender. Variants are forbidden.

## 2.7 Option

§36 No options are permitted.

## 2.8 Quantities

§37 Only Item 1 – Design Services of each lot (see 5.2.1 p. 41) is determined (fixed block), while Item 2 – Works supervision and management services of each lot (see 5.2.2, p.42) is a conditional block.

§38 The public contract’s minimum quantities (first item, fixed block) are mentioned under points 5.2.1 Item 1 – Design Services, p.41 of the Terms of Reference and – prices – Lot 2 – (Two schools in Gaza), p.87 and 13 – prices – Lot 3 – (One school in Al-Ezariyeh), p.88. Without prejudice to the possibility for the Contracting Authority to terminate the contract if the services performed do not meet the requirements imposed or if they are not performed by the deadlines asked, by concluding this contract the service provider acquires the right to perform these quantities.

§39 During the contract period and in function of the evolution of the needs, the Contracting Authority will be able to commit for additional orders for the supervision of the works of schools (item 2 of each lot). Such commitment will be made through a commencement order as an electronically signed letter Quantities mentioned in 12 – prices – Lot 2 – (Two schools in Gaza), p. 87 and 13 – prices – Lot 3 – (One school in Al-Ezariyeh), p. 88 at least.

§40 Though contract conclusion pertains to the whole of the contract, it only binds the contracting authority for the fixed blocks. The performance of each conditional block depends on a decision by the contracting authority of which the service provider is notified in accordance with the modalities given in the initial procurement documents. The Contracting Authority reserves the right to commit to the supervision of the works in certain schools only or not to order the item 2 of certain or all lots.

## 3 Subject-matter and scope of the public contract

### 3.1 Award procedure

§41 This contract is awarded in accordance with Article 36 of the Law of 17 June 2016 via an open procedure.

### 3.2 Publication

#### 3.2.1 Official notification

§42 This contract is officially advertised in the Belgian Public Tender bulletin (via e-notification).

#### 3.2.2 Enabel publication

§43 This contract furthermore published on the Enabel website (www.enabel.be) from **22<sup>nd</sup> May 2023 to 6<sup>th</sup> July 2023**.

§44 The contract notice was also advertised through the OECD website.

§45 The contract notice was also advertised on the following websites:

- [jobs.ps](https://jobs.ps)
- [tenderjo.com](https://tenderjo.com)

### 3.3 Information

§46 The awarding of this contract is coordinated by **Mr. Mohammed Dahlan (Expert in Contracting and Administration)**. Throughout this procedure all contacts between the contracting authority and the (prospective) tenderers about this contract will exclusively pass through this service / this person. (Prospective) tenderers are prohibited to contact the contracting authority in any other way with regards to this contract, unless otherwise stipulated in these Tender Specifications.

§47 Information meeting for all lots will be held online, on **31<sup>st</sup> May 2023**, at **11:00 AM** (Palestinian time - GMT+3). Interested tenderers are invited to join using the following details:

[Click here to join the meeting](#)

Meeting ID: 393 860 681 27

Passcode: 2bXw6k

§48 Until **15<sup>th</sup> June 2023** inclusive, candidate-tenderers may ask questions about these Tender Specifications and the contract. Questions will be in writing to **Mr. Mohammed Dahlan, Expert in Contracting and Administration (mohammed.dahlan@enabel.be)** and they will be answered in the order received. The complete overview of questions asked will be available at the address mentioned above as from **22<sup>nd</sup> June 2023**.

§49 Until the notification of the award decision no information will be given about the evolution of the procedure.

§50 The procurement documents can be consulted free of charge at the following internet address:

► <https://www.enabel.be/public-procurement/>

§51 The tenderer is to submit his tender after reading and taking into account any corrections made to the Tender Specifications that are published on the Enabel website or that are sent to him by e-mail. To do so, when the tenderer has downloaded the Tender Specifications, it is strongly advised that he gives his coordinates to the public procurement administrator mentioned above and requests information on any modifications or additional information.

§52 The tenderer is required to report immediately any gap, error or omission in the procurement documents that precludes him from establishing his price or compare tenders, within ten days at the latest before the deadline for receipt of tenders.

## 3.4 Tender

### 3.4.1 Data to be included in the tender

§53 Tenderers are advised to consult the general principles set out under Heading 1 of the Law of 17 June 2016, which are applicable to this award procedure.

§54 The tender and the annexes to the tender form are drawn up in English.

§55 By submitting a tender, the tenderer automatically renounces to his own general or specific sales conditions, even if these are mentioned in any of the annexes to his tender.

§56 The tenderer clearly designates in his tender which information is confidential and/or relates to technical or business secrets and may therefore not be divulged by the contracting authority.

§57 The tenderer must use the tender forms in annex. In case he does not use this form, he is fully responsible for the perfect concordance between the documents he has used and the form.

§58 The tender of the tenderer will consist of the physically separate sections mentioned below (see Part 6 - Forms):

- 6.1 Form 1 - Identification form, p.65
- 6.2 Form 2 – Integrity statement for the tenderers, p.66
- 6.3 Form 3 - Declaration on honour – exclusion criteria, p.67
- 6.4 Attachment 1 - Power of attorney, p.69
- 6.5 Attachment 2 - Incorporation certificate, p.70
- 6.6 Attachment 3 - Certification of clearance with regards to the payments of social security contributions, p.71
- 6.7 Attachment 4 - Certification of clearance with regards to the payments of applicable taxes, p.72
- 6.8 Attachment 5 - Declaration from a competent authority of not being in a situation of bankruptcy or insolvency, p.73
- 6.9 Form 4 - List of the main similar services, p.74
- 6.10 Attachment 6 - Certificates of completion, p.85
- 6.15 Attachment 7 - Methodology, p.90
- 6.16 Form 7 - Workplan, p.91
- 6.17 Form 8 - Key experts, p.92



- 6.18 Attachment 8 - CVs of all mentioned personnel, p.105
- 6.19 Form 9 - Subcontractors, p.106
- 6.20 Form 10 – Checklist, p.107

§59 Based on the lots in which the tenderer is interested, the following shall be completed:

- 6.11 Form 5C – prices – Lot 3 – (One school in Al-Ezariyeh), p. 86
- 6.12 Form 5B – prices – Lot 2 – (Two schools in Gaza), p.87
- 6.13 Form 5C – prices – Lot 3 – (One school in Al-Ezariyeh), p. 88

§60 For tenderers interested in more than one lot, their preference should be indicated using the following form: 6.14 Awarding Preferences, p.89.

### 3.4.2 Period the tender is valid

§61 The tenderers are bound by their tender for a period of **90 calendar days** from the reception deadline date.

### 3.4.3 Determination of prices

§62 All prices given in the tender form must obligatorily be quoted in **EUROS**.

§63 This contract is a mixed contract, meaning that the prices are fixed according to following several modes:

- Item 1 - “Design services” will be considered as lump-sum contract, i.e. proposed price is a flat rate that covers the whole performance of the contract or each to the items of the inventory.
- Item 2 - "Works Supervision and Management Services” will be considered as price-schedule contract, i.e. a contract in which only the unit prices are lump-sum prices. The price to be paid will be obtained by applying the unit prices mentioned in the inventory to the quantities actually performed.

§64 In accordance with Article 37 of the Royal Decree of 18 April 2017, the contracting authority may for the purpose of verifying the prices carry out an audit of any and all accounting documents and perform on-the-spot checks with a view of verifying the correctness of the indications supplied.

#### 3.4.3.1 Elements included in the price

§65 Except for VAT, the lump-sum price includes all costs, taxes, duties and contributions of any kind for performing all tasks, duties, and responsibilities mentioned in the contract including the TORs, and namely:

- Fees, per diems and salaries.
- Travel and transportation costs including flights, land transportation, accommodation, parking costs or fines, magnetic cards / permits costs.
- Security costs.
- The administrative management and secretariat, communication costs (including phone calls and the internet), photocopy and printing costs, costs for documentation of the services that can be required by the Contracting Authority, the production and delivery of documents or records linked to the performance of the services.
- All equipment, including IT equipment and **professional licensed software** (CAD, simulation software, etc.), and material expenses needed to perform the present contract.

- The copyright fees, the purchase or leasing of third-party services needed for the performance of the contract and costs for any possible intellectual property rights
- **Professional Indemnity Insurance:** the coverage shall provide protection against claims arising from negligence, malpractice, mistakes, or misrepresentation; the insurance shall cover the following aspects:
  - An error in material calculations, an incorrect measurement or a safety risk could cause severe delays to a project, costing the contracting authority significant time and money to fix.
  - Poor technical advising
  - Issues with the design resulting someone injured, or property damaged due to a negligence.
- Where applicable, the measures imposed by occupational safety and worker health legislation.
- Customs and excise duties for equipment and products used.
- The acceptance costs and the cost of attending the pre-construction meeting: Obligations of the service providers shall start with the attendance to the pre-construction meeting and continue up to the date of issuing the Final Acceptance Certificates. The fees of these services are considered to be included in the prices of the Consultants for item 3.
- The cost of the supervision during the defects' liability period is also deemed included in the unit prices of the monthly progress payments of supervision. No additional payment will be made for this period.

§66 In case the contract is extended, the prices mentioned in the contract apply.

§67 The Contracting Authority has the right to reduce the number and type of personnel of the Service provider as it is deemed necessary by the Contracting Authority and the service provider shall accept this reduction of staffing. Personnel and staff members reduced will not be paid by the Contracting Authority. Rates mentioned in the financial offer will be applied in this case. This reduction may and/or may not reduce the obligations of the Service provider.

#### 3.4.4 How to submit tenders?

§68 The tender will be drawn up in 1 printed copy on A4 paper (printing in black and white and on both sides of paper is encouraged).

► It is kindly requested to **avoid fancy binding systems and plastic covers** – one simple staple or binder clip is most appreciated. The financial offer **does not need** to be sealed in a separate envelope.

§69 Two electronic copies (the original editable pdf file as filled before printing and a scan of the printed, signed and stamped original copy) must also be submitted in one or more PDF files on a physical electronic support (CD-ROM, DVD-ROM, USB flash memory or SD card). Each tenderer may only submit one tender.

§70 The tender and all accompanying documents have to be numbered and signed (original hand-written signature) by the tenderer or his/her representative. The same applies to any alteration, deletion or note made to this document. The representative must clearly state that (s)he is authorised to commit the tenderer. If the tenderer is a company / association without legal body status, formed by separate natural or legal persons (temporary group or temporary partnership), **the tender must be signed by each of these persons.**

§71 Tenders for more than one lot may be grouped in a single envelope. Any document which concerns more than one lot (e.g. identification forms, incorporation certificates, financial resources, identical CVs, completion certificates, etc.) shall be submitted only once.

§72 The signed and dated original will be sent in a sealed envelope mentioning:

- Tender Title: **“Public service contract for the design and works supervision of four eco-friendly schools in Palestine”**
- contract number: **“PSE22001-10011”**
- Tenderer Name

§73 The tenderer submits his tender by **6<sup>th</sup> July 2023 before 01:00 pm** (Palestinian time - GMT+3) as follows:

a) By mail (standard mail or registered mail)

In this case, the sealed envelope is put in a second closed envelope addressed to:

*Enabel office in Ramallah*  
Belgian Development Agency  
Royal Center Building, 7th Floor  
Al Balou', Mecca Street  
Ramallah - Al Bireh – West Bank  
T/F: (+972) 2 242 1137/8

OR

b) Delivered by hand with acknowledgement of receipt to one of the following two addresses:

*Enabel office in Ramallah*  
Belgian Development Agency  
Royal Center Building, 7th Floor  
Al Balou', Mecca Street  
Ramallah - Al Bireh – West Bank  
T/F: (+972) 2 242 1137/8

Or

*Enabel office in Gaza*  
Belgian Development Agency  
Al Rayes Plaza Building, 4th floor  
Victor Hugo street  
Gaza City  
M +970 56 212 1315  
T +970 8 2822007

§74 The tenders may be submitted to any of the two addresses irrespectively of the lots to which the tenderers are applying.

§75 The service can be reached on working days during office hours: from 9 am to 4 pm.

§76 Any request for participation or tender must arrive before the final submission date and time. Requests for participation or tenders that arrive late will not be accepted (Article 83 of the Royal Decree on Awarding).

### **3.4.5 Change or withdrawal of a tender that has already been submitted**

§77 When a tenderer wants to change or withdraw a tender already sent or submitted this must be done in accordance with the provisions of Articles 43 and 85 of the Royal Decree of 18 April 2017.

§78 To change or withdraw a tender already sent or submitted, a written statement is required, which will be correctly signed by the tenderer or his representative. The subject-matter and the scope of the changes must be indicated in detail. Any withdrawal must be unconditional.

- §79 The withdrawal may also be communicated by fax or electronic means, provided that it is confirmed by registered letter deposited at the post office or against acknowledgement of receipt at the latest the day before the tender acceptance deadline.
- §80 When the tender is submitted via e-tendering, the tender is modified or withdrawn in accordance with Article 43, §2 of the Royal Decree of 18 April 2017.
- §81 Thus, modifying or withdrawing a tender after the submission report has been signed requires a new submission report to be signed.
- §82 The subject-matter and the scope of the changes must be indicated in detail.
- §83 The withdrawal must be pure and simple.
- §84 Where the submission report issued following modification or withdrawal as referred to in article §78 is not signed as referred to in article §78, the modification or withdrawal is automatically void. This nullity applies only to the modifications or withdrawal, not to the tender itself.

### **3.4.6 Opening of Tenders**

- §85 The tender opening is open to the public.
- §86 The tenders must be in the possession of the contracting authority before the deadline mentioned in §69.
- §87 The tender opening session will take place 1 hour after the deadline mentioned in p.19 simultaneously at each of the two addresses given above for the submission of tenders.

### **3.4.7 Selection of tenderers**

#### **3.4.7.1 Exclusion grounds**

- §88 The obligatory and facultative grounds for exclusion grounds are given in attachment to these Tender Specifications.
- §89 By submitting this tender, the tenderer certifies that he is not in any of the cases of exclusion listed in the Articles 67 to 70 of the Law of 17 June 2016 and the Articles 61 to 64 of the Royal Decree of 18 April 2017.
- §90 The contracting authority will verify the accuracy of this Declaration on honour for the tenderer with the best tender.
- §91 For that purpose, the contracting authority will ask the tenderer concerned to provide information or documents allowing the contracting authority to verify the tenderer's personal situation by the fastest means and within the term set by the contracting authority.
- §92 The contracting authority will itself ask for information or documents that it can obtain free of charge by digital means from the instances that manage the information or documents.
- §93 The contracting authority will ask the tenderer, if necessary, at any time during the procedure, to provide all or part of the supporting documents, if necessary to ensure the smooth proceeding of the procedure. The tenderer is not required to submit any supporting documents or other evidence if and to the extent that the contracting authority has the possibility to directly obtain certificates or relevant information by accessing a free national database in a Member State.
- §94 With the exception of the exclusion grounds relating to tax and social security, the tenderer that is in one of the mandatory or optional exclusion situations can prove on his own

initiative that he has paid or undertaken to pay compensation for any prejudice caused by the criminal offence or the fault, clarified totally the facts and circumstances by collaborating actively with the authorities in charge of the enquiry and taken concrete specific technical, organisational and personnel measures to prevent a new criminal offence or a new fault.

#### **3.4.7.2 Selection criteria**

- §95 Moreover, by means of the documents requested in 6.9 List of the main similar services, the tenderer must prove that he is sufficiently capable, from a technical point of view, to successfully perform this public contract.
- §96 Only tenders from tenderers who meet the selection criteria are taken into consideration in order to participate in the comparison of tenders on the basis of the award criteria set out below, subject to the regularity of these tenders.

#### **3.4.7.3 Modalities relating to tender examination and regularity of the tenders**

- §97 Before starting the evaluation and comparison of the tenders, the contracting authority examines their regularity.
- §98 The tenders must be drawn up in such a way that the contracting authority can make a selection without starting negotiations with the tenderer. For this reason, and in order to be able to assess the tenders fairly, it is essential that the tenders be completely in conformity with the provisions of the Tender Specifications, both formally and materially.
- §99 The substantially irregular tenders are excluded.
- §100 A substantial irregularity is such as to give a discriminatory advantage to the tenderer, to distort competition, to prevent the evaluation of the tenderer's tender or its comparison with the other tenders, or to render non-existent, incomplete or uncertain the commitment of the tenderer to perform the contract under the conditions laid down.
- §101 The following irregularities are deemed substantial:
- 1° failure to comply with environmental, social or labour law, provided that such non-compliance is punishable by law;
  - 2° failure to comply with the requirements of Articles 38, 42, 43, § 1, 44, 48, § 2, clause 1, 54, § 2, 55, 83 and 92 of the Royal Decree of 18 April 2017 and of Article 14 of the Law, insofar as they contain obligations vis-à-vis the tenderers;
  - 3° failure to comply with the minimum requirements and the requirements that are indicated as substantial in the procurement documents;
  - 4° tenders that do not bear an original handwritten signature on the tender form.
- §102 The contracting authority will also declare void any tender that is affected by several non-substantial irregularities which, by reason of their accumulation or combination, are capable of having the same effect as described above (in accordance with Article 76 of the Royal Decree of 18 April 2017).

#### **Conflicts of interest - Revolving door** (Art. 51 Royal Decree 18/04/2017).

- §103 Without prejudice to Articles 6 and 69, clause 1, 5° of the Law a conflict of interest is considered any situation in which a natural person who has worked for a contracting authority as an internal staff member, whether in a hierarchy relation or not, as a concerned civil servant, public officer or any other person linked whatsoever to the contracting authority, would later intervene under a public contract awarded by this contracting authority and where a relation exists

between the former activities that the above person conducted for the contracting authority and the activities he or she conducts under the contract.

§104 The application of above-mentioned provision is limited however to a two-year term from the resignation of said person or any other type of termination of the former activities.

#### 3.4.7.4 Award criteria

§105 The Contracting Authority selects the regular tender that it finds to be most advantageous, taking account of the following criteria per lot:

##### Award criterion 1: Methodology: 20 %

§106 The tenderer proposes a methodology based on the Terms of reference (p.38), specifying how they propose to reach the Objective of the consultancy (p.40) and achieve the requested Design standards and specifications (p.49) within the timeframe set in Performance modalities and deliverables (p.58).

§107 For more information regarding how to write and provide the methodology, see 6.15 Methodology, p.90.

§108 The methodology is subject to evaluation according to the following 3 sub-criteria:

	Sub-criterion	Scoring
1.	Work plan and description of involvement of key personnel	6 points
2.	Proposed architectural concept and technological strategy	10 points
3.	Lessons learned	4 points

##### Award criterion 2: Qualification and experience of key experts proposed: 40 %

§109 The key experts are those whose involvement is considered to be instrumental to achieve the contract objectives. Their positions and responsibilities are defined in point 5 “Terms of Reference” (5.6.1 Personnel for item 1 - design services, p.62 and 5.6.2 Personnel for item 2 – works supervision and management services, p.63) and they are subject to evaluation.

	Position	Years of experience	Specific experience in green buildings	Total Scoring
1.	Integrated design sustainability coordinator(s)	5	5	10 points
2.	Architect(s)	3	3	6 points
3.	Civil Structural Engineer(s)	3	1	4 points
4.	Electrical engineer(s)	2	2	4 points
5.	Mechanical engineer(s)	2	2	4 points



	Position	Scoring Total Max Score
6.	Quantity Surveyor(s)	1 point
7.	Draftsman(s)	2 points
8.	Land Surveyor(s)	1 point
9.	Resident Engineer(s)	5 points
10.	Site engineer(s)	2 points
11.	Office engineer(s)	1 point

§110 Additional staff proposed will not be part of the scoring.

§111 **Only tenders with total average scores of at least 40 points qualify for the financial evaluation.**

**Award criterion 3: Price: 40 %**

§112 With regards to the 'price' criterion, the following formula will be used:

$$\text{Points tender A} = \frac{\text{amount of lowest tender} \times 40}{\text{amount of tender A}}$$

#### 3.4.7.5 Final score

§113 The scores for the award criteria will be added up. The contract will be awarded to the tenderer with the highest final score, after the contracting authority has verified the accuracy of the Declaration on honour of this tenderer and provided the control shows that the Declaration on honour corresponds with reality.

#### 3.4.7.6 Awarding the public contract

§114 The lot(s) of the contract will be awarded to the tenderer who has submitted the most economically advantageous tender for the lot.

§115 Notice though that, in accordance with Art. 85 of the Law of 17 June 2016, there is no obligation for the contracting authority to award the contract.

§116 The contracting authority may either decide not to award the contract, either redo the procedure, if necessary, through another award procedure.

§117 The contracting authority also reserves the right to award only certain lot(s) and to decide that the other lots will be the subject matter of one or more new contracts, if necessary, according to another award procedure in accordance with Article 58 §1, third paragraph.

#### 3.4.8 Concluding the public contract

§118 In accordance with Art. 88 of the Royal Decree of 18 April 2017, the contract occurs through the notification to the selected tenderer of the approval of his tender.

§119 Notification is via digital platforms, e-mail or fax and, on the same day, by registered post.

§120 So, the full contract consists of a contract awarded by Enabel to the chosen tenderer in accordance with:

- These Tender Specifications and its annexes;
- The approved tender of the contractor and all of its annexes;
- The registered letter of notification of the award decision;
- Any later documents that are accepted and signed by both parties, as appropriate.

§121 In an objective of transparency, Enabel undertakes to publish each year a list of recipients of its contracts. By introducing his tender, the successful tenderer declares that he agrees with the publication of the title of the contract, the nature and object of the contract, its name and location, and the amount of the contract.



## 4 Specific contractual and administrative conditions

§122 This chapter of these Tender Specifications holds the specific provisions that apply to this public contract by way of derogation from the 'General Implementing Rules for public procurement and for concessions for public works' of the Royal Decree of 14 January 2013, hereinafter referred to as 'GIR', or as a complement or an elaboration thereof. The numbering of the articles below (between brackets) follows the numbering of the GIR articles. Unless indicated, the relevant provisions of the General Implementing Rules (GIR) apply in full.

§123 These Tender Specifications derogate Articles 25. §2 and 26 of the General Implementing Rules – GIR (Royal Decree of 14 January 2013).

### 4.1 Managing official (Art. 11)

§124 The contract managing official is Mr Joeri Leysen, Intervention Manager, e-mail: [joeri.leysen@enabel.be](mailto:joeri.leysen@enabel.be) with technical support from Mr. Alexis Doucet, Expert in Infrastructure, e-mail: [alexis.doucet@enabel.be](mailto:alexis.doucet@enabel.be).

§125 Once the contract is concluded, the managing official is the main contact point for the service provider. Any correspondence or any questions with regards to the performance of the contract will be addressed to him/her, unless explicitly mentioned otherwise in these Tender Specifications.

§126 The managing official is responsible for the follow-up of the performance of the contract.

§127 The managing official is fully competent for the follow-up of the satisfactory performance of the contract, including issuing service orders, drawing up reports and states of affairs, approving the services, progress reports and reviews. He may order any modifications to the contract with regards to its subject-matter provided that they remain within its scope.

§128 However, the signing of amendments or any other decision or agreement implying derogation from the essential terms and conditions of the contract are not part of the competence of the managing official. For such decisions the contracting authority is represented as stipulated under 1.2 Contracting authority, p.7.

§129 Under no circumstances is the managing official allowed to modify the terms and conditions (e.g. performance deadline) of the contract, even if the financial impact is nil or negative. Any commitment, change or agreement that deviates from the conditions in the Tender Specifications and that has not been notified by the contracting authority, will be considered null and void.

### 4.2 Subcontractors (Art. 12 to 15)

§130 The fact that the contractor entrusts all or part of his commitments to subcontractors does not relieve him of liability to the contracting authority. The latter does not recognise any contractual relation with third parties.

§131 The contractor remains, in any case, solely liable to the contracting authority.

§132 The service provider undertakes to have the contract performed by the persons indicated in the tender, except for force majeure. The persons mentioned or their replacements are all deemed to effectively be involved in the performance of the contract. Any replacements must be approved by the contracting authority.

§133 When the contractor uses a subcontractor to carry out specific processing activities on behalf of the contracting authority, the same data protection obligations as those of the contractor are imposed on that subcontractor by contract or any other legal act.

§134 In the same way, the contractor will respect and enforce to his subcontractors, the provisions of Regulation (EU) 2016/679 of the European Parliament and of the Council of 27 April 2016 on the protection of natural persons with regard to the processing of personal data and on the free movement of such data (General Data Protection Regulation, GDPR). The contracting authority may conduct an audit of the processing carried out in order to validate compliance with this legislation.

### **4.3 Confidentiality (art. 18)**

§135 The knowledge and information gathered by the tenderer under the framework of this public contract is strictly confidential.

§136 Under no circumstances can the information collected, regardless of its origin and nature, be transferred to third parties in any form.

§137 The tenderer is therefore bound by the duty of discretion.

§138 In accordance with Article 18 of the Royal Decree of 14 January 2013 establishing the general rules for public procurement, the tenderer undertakes to consider and process in a strictly confidential manner any information, all facts, any documents and/or any data, whatever their nature and support, which have been communicated to him, in any form and by any means, or to which he has access, directly or indirectly, in the context or on the occasion of this public contract. Confidential information covers, in particular, the very existence of this public contract, without this list being limited.

§139 Therefore, (s)he undertakes to:

- Respect and enforce the strict confidentiality of these elements and to take all necessary precautions in order to preserve their secrecy (these precautions cannot in any case be inferior to those taken by the tenderer for the protection of his own confidential information);
- Consult, use and/or exploit, directly or indirectly, all of the above elements only to the extent strictly necessary to prepare and, if necessary, to carry out this public contract (particularly in accordance with the privacy legislation with respect to personal data processing);
- Not reproduce, distribute, disclose, transmit or otherwise make available to third parties the above elements, in whole or in part, and in any form, unless having obtained prior and written consent of the contracting authority;
- Return, at the first request of the contracting authority, the above elements;
- In general, not disclose directly or indirectly to third parties, whether for advertising or any other reason, the content of this public contract.

### **4.4 Protection of personal data**

#### **4.4.1 Processing of personal data by the contracting authority**

§140 The contracting authority undertakes to process the personal data that are communicated to it in response to the Call for Tenders with the greatest care, in accordance with legislation on the protection of personal data (General Data Protection Regulation, GDPR). Where the Belgian law of 30 July 2018 on the protection of natural persons with regard to the

processing of personal data contains stricter provisions, the contracting authority will act in accordance with said law.

#### **4.4.2 Processing of personal data by a subcontractor**

- §141 During contract performance, the contractor may process personal data of the contracting authority exclusively in the name and on behalf of the contracting authority, for the sole purpose of performing the services in accordance with the provisions of the Tender Specifications or in execution of a legal obligation.
- §142 For any processing of personal data carried out in connection with this public contract, the contractor is required to comply with Regulation (EU) 2016/679 of the European Parliament and of the Council of 27 April 2016 on the protection of natural persons with regard to the processing of personal data and on the free movement of such data (GDPR) and the Belgian law of 30 July 2018 on the protection of natural persons with regard to the processing of personal data.
- §143 By simply participating in the contracting process, the tenderer certifies that he will strictly comply with the obligations of the GDPR for any processing of personal data conducted in connection with that public contract.
- §144 The personal data that will be processed are confidential. The contractor will therefore limit access to data to the strictly necessary personnel for the performance, management and monitoring of the public contract.
- §145 For the performance of the public contract, the contracting authority will determine the purposes and means of processing personal data. In this case, the contracting authority will be responsible for the processing and the contractor will be its processor, within the meaning of Article 28 of the GDPR.
- §146 Processing carried out on behalf of a controller must be governed by a contract or other legal act that is binding on the processor with regard to the personal data controller and that sets out that the subcontractor acts only on the instruction of the person in charge of the processing and that the confidentiality and security obligations regarding the processing of personal data are also the responsibility of the subcontractor (Article 28 §3 of the GDPR).

#### **4.5 Intellectual property (Art. 19 to 23)**

- §147 The contracting authority acquires the intellectual property rights created, developed or used during performance of the contract.
- §148 Without prejudice to clause 1 and unless otherwise stipulated in the procurement documents, when the subject-matter of the public contract consists of the creation, manufacture or the development of designs or of logos, the contracting authority acquires the intellectual property thereof, as well as the right to trademark them, to have them registered and to have them protected.
- §149 For domain names created under the contract, the contracting authority also acquires the right to register and protect them, unless otherwise stipulated in the procurement documents.
- §150 When the contracting authority does not acquire the intellectual property rights, it obtains a patent licence of the results protected by intellectual property law for the exploitation modes that are mentioned in the procurement documents.

§151 The contracting authority lists the exploitation modes for which it intends to obtain a licence in the procurement documents.

#### 4.6 Performance bond (Art. 25 to 33)

§152 The performance bond is set at **10%** of the total value, excluding VAT, of procurement. The value thus obtained is rounded up to the nearest 10 euros.

§153 In accordance with the legal and regulatory provisions, the performance bond may be constituted either of cash or of public funds or may take the form of a joint performance bond.

§154 The performance bond may also take the form of a surety bond issued by a credit institution meeting the requirements of the law on the statute and control of credit institutions, or by an insurance company meeting the requirements of the law on control of insurance companies and approved for branch 15 (bonds).

§155 By way of derogation from Article 26, the performance bond may be posted through an establishment that has its registered office in one of the countries of destination of the services. The contracting authority reserves the right to accept or refuse the posting of the bond through that institution. The contractor shall mention the name and address of this institution in the tender.

§156 This derogation is founded on the idea of providing possible local tenderers with an opportunity to submit a tender. This measure is made essential by the specific requirements of the contract.

§157 The contractor must, within 30 calendar days from the day of contract conclusion, furnish proof that he or a third party has posted the bond in one of the ways set out below:

- 1° in the case of cash, by transfer of the amount to the bpost bank account number of the Deposit and Consignment Office. Complete the following form as well as possible [https://finances.belgium.be/sites/default/files/O1\\_marche\\_public.pdf](https://finances.belgium.be/sites/default/files/O1_marche_public.pdf) (PDF, 1.34 Mo), and forward it by e-mail to [info.cdcdck@minfin.fed.be](mailto:info.cdcdck@minfin.fed.be)
- 2° in the case of public funds, by depositing such funds, for the account of the Deposit and Consignment Office, with the State Cashier at the head office of the National Bank in Brussels or at one of its provincial agencies or with a public institution with an equivalent function
- 3° in the case of a joint surety, by deposit via an institution that lawfully carries out this activity of a deed of joint surety with the Deposit and Consignment Office or with a public institution with an equivalent function
- 4° in the case of a guaranty, by the deed of undertaking of the credit institution or the insurance company.

§158 This proof must be provided as applicable by submission to the contracting authority of:

- 1° the deposit receipt of the Deposit and Consignment Office or of a public institution with an equivalent function; or
- 2° a debit notice issued by the credit institution or the insurance company; or
- 3° the deposit certificate issued by the State Cashier or public institution with an equivalent function; or
- 4° the original copy of the deed of joint surety stamped by the Depot and Consignment Office or by a public institution with an equivalent function; or
- 5° the original copy of the deed of undertaking issued by the credit institution or the insurance company granting a guaranty.

- §159 These documents, signed by the depositor, must state why the performance bond was posted and its precise usage, consisting of a concise indication of the subject-matter of the contract and a reference to the procurement documents, as well as the name, first names and full address of the contractor and, where relevant, that of the third party that made the deposit on the contractor's account, bearing the statement 'lender' or 'mandatary' as appropriate.
- §160 The period of 30 calendar days specified above is suspended during the period of closure of the contractor's business for paid annual holidays and the days off in lieu stipulated by regulation or by a collective binding labour agreement.
- §161 Proof that the required performance bond has been posted must be sent to the address that will be mentioned in the contract conclusion notification.
- §162 Request by the contractor for the acceptance procedure to be carried out:
- 1° For the provisional acceptance: This is equal to a request to release the first half of the performance bond.
  - 2° For the final acceptance: This is equal to a request to release the second half of the performance bond, or, in case no provisional acceptance applied, to release the whole of the performance bond.

## **4.7 Conformity of performance (Art. 34)**

- §163 The services must comply in all respects with the procurement documents. Even in the absence of technical specifications in the procurement documents, the works, supplies and services must comply in all aspects with good practice.

## **4.8 Zero tolerance Sexual exploitation and abuse**

- §164 In application of Enabel's Policy regarding sexual exploitation and abuse of June 2019 there will be zero tolerance towards any misconduct that could impact the professional credibility of the tenderer.

## **4.9 Changes to the public contract (Art. 37 to 38/19)**

### **4.9.1 Replacement of the contractor (Art. 38/3)**

- §165 Provided that he meets the selection and exclusion criteria set out in this document, a new contractor may replace the contractor with whom the initial contract was agreed in cases other than those provided for in Art. 38/3 of the General Implementing Rules (GIR).
- §166 The contractor submits his request as quickly as possible by registered post, stating the reasons for this replacement and providing a detailed inventory of the state of the supplies and services already delivered, the new contractor's contact details and the documents and certificates which the contracting authority cannot access free of charge.
- §167 The replacement will be recorded in an amendment dated and signed by all three parties. The initial contractor remains liable to the contracting authority for the performance of the remainder of the contract.

### **4.9.2 Revision of prices (Art. 38/7)**

- §168 For this contract, price revisions are not permitted.

#### 4.9.3 Indemnities following the suspensions ordered by the contracting authority during performance (Art. 38/12)

§169 The contracting authority reserves the right to suspend the performance of the contract for a given period, mainly when it considers that the procurement contract cannot be performed without inconvenience at that time.

§170 The performance period is extended by the period of delay caused by this suspension, provided that the contractual performance period has not expired. If it has expired, the return of fines for late performance will be agreed.

§171 When activities are suspended, based on this clause, the contractor is required to take all necessary precautions, at his expense, to protect the services already performed and the materials from potential damage caused by unfavourable weather conditions, theft or other malicious acts.

§172 The contractor has a right to damages for suspensions ordered by the contracting authority when:

- The suspension lasts in total longer than one twentieth of the performance period and at least ten working days or two calendar weeks, depending on whether the performance period is expressed in working days or calendar days;
- The suspension is not owing to unfavourable weather conditions;
- The suspension occurred during the contract performance period.

§173 Within thirty days of their occurrence or the date on which the contractor or the contracting authority would normally have become aware of them, the contractor reports the facts or circumstances succinctly to the contracting authority and describes precisely their impact on the progress and cost of the contract.

#### 4.9.4 Unforeseen circumstances

§174 As a rule, the contractor is not entitled to any modification of the contractual terms due to circumstances of which the contracting authority was unaware.

§175 A decision of the Belgian State to suspend cooperation with a partner country is deemed to be unforeseeable circumstances within the meaning of this article. Should the Belgian State break off or cease activities which implies therefore the financing of this public contract, Enabel will do everything reasonable to agree a maximum compensation figure.

### 4.10 Preliminary technical acceptance (Art. 42)

§176 The contracting authority reserves the right to request an activity report at any time of the assignment from the service provider (meetings held, persons met, institutions visited, summary of results, problems encountered and unresolved issues, deviations from the planning and deviations from the ToR...).

### 4.11 Performance modalities (Art. 146 et seq.)

#### 4.11.1 Deadlines and terms (Art. 147)

##### 4.11.1.1 Item 1: Design services (fixed block)

§177 The different design services shall be performed within a combined total period of **120 working days** starting from the day following the date of dispatch of the contract award notification letter, which will contain a first commencement order.



§178 This combined duration is calculated as the sum of all different periods during which the consultants are taken with an assignment, i.e. the periods starting with a commencement order by the Contracting Authority and ending with the submission of a deliverable, and periods during which the service provider is integrating feedback and comments on the submitted deliverables.

§179 The calculation of this duration does **not** include:

- The periods during which the Contracting Authority is reviewing deliverables (periods starting when a deliverable has been submitted by the service provider until feedback is provided by the Contracting Authority).
- The weekly closure of the service provider's business (one day per week, to be decided by the service provider and defined as part of their methodology – see Methodology, p.90).
- Official public holidays in Palestine.

§180 The total combined of number of days mentioned above may be distributed freely by the service provider among the different sub-phases of the design, as long as the total number is respected. The service provider will propose a distribution of the number of days as part of their methodology (see Methodology, p.90, in Form 7 - Workplan, p.91).

§181 The order forms are addressed to the service provider by electronically signed letters through which the date of dispatch can be determined unambiguously.

§182 Any further correspondence pertaining to the order form (and to the performance of the services) follows the same rules as those for the dispatch of the order form when a party wants to establish proof of its intervention.

§183 In the event the acknowledgement of receipt of the order form is received after the period of two working days, upon written demand and justification of the service provider, the performance period may be extended pro rata of the delay of the acknowledgement of receipt of the order form. When the service that placed the order, upon examination of the written demand of the service provider, estimates that the demand is founded or partially founded, it will inform the service provider in writing of which extension of the period is accepted.

§184 When the order form is clearly incorrect or incomplete and implementation of the order becomes impossible, the service provider immediately notifies the service that placed the order about this in writing in order to find a solution to allow for normal implementation of the order. If necessary, the service provider shall ask for an extended service performance period under the same conditions as those foreseen in case of late reception of the order form.

#### **4.11.1.2 Item 2: Works Supervision and Management Services (conditional block)**

§185 For each lot, the Works Supervision and Management Services will start at the moment of the pre-construction meeting, shortly after the awarding of the contract for the construction works, and will last until the final acceptance of the works.

§186 The works are currently expected to start in early 2024. The estimated duration of the works will be defined by the service providers during the design phase, but is assumed to last around 18 months. The defects' liability period will start at the provisional acceptance of the works and will last for **two years**.

#### **4.11.2 Place where the services must be performed and formalities (Art. 149)**

§187 The services must be performed at the following locations:

- For the land surveys and the works supervision: in the sites mentioned in the terms of references. See: 5.3.School programme and location, p.4444.
- For the design: in the service provider's premises
- For the presentation of deliverables to the Contracting Authority: at Enabel's offices (in in Ramallah for Lot 1 and 3, in Gaza for Lot 2 – see addresses in p.19), at the Ministry of Education in Ramallah or online (to be confirmed by the Contracting Authority during the implementation, depending on the deliverable).

#### **4.12 Inspection of the services (Art. 150)**

- §188 If during contract performance irregularities are found, the contractor will be notified about this immediately by e-mail or electronically signed letter attached to an email. The service provider is bound to perform the non-complying services again.
- §189 The service provider advises the managing official by e-mail showing the exact date of dispatch, at which date the services can be controlled.

#### **4.13 Liability of the service provider (Art. 152-153)**

- §190 The service provider takes the full responsibility for mistakes and deficiencies in the services provided.
- §191 Moreover, the service provider indemnifies the contracting authority against damages for which it is liable towards third parties due to late performance of the services or due to failure of the service provider. See also: Professional Indemnity Insurance, in 3.4.3.1 Elements included in the price, p.17.

#### **4.14 Means of action of the contracting authority (Art. 44-51 and 154-155)**

- §192 The service provider's default is not solely related to services as such but also to the whole of the service provider's obligations.
- §193 In order to avoid any impression of risk of partiality or connivance in the follow-up and control of the performance of the contract, it is strictly forbidden to the service provider to offer, directly or indirectly, gifts, meals or any other material or immaterial advantage, of whatever value, to the employees of the contracting authority who are concerned directly or indirectly by the follow-up and/or control of the performance of the contract, regardless of their hierarchical rank.
- §194 In case of violation, the contracting authority may impose a lump-sum fine to the service provider for each violation, which can be to up to three times the amount obtained by adding up the (estimated) values of the advantage offered to the employee and of the advantage that the contractor hoped to obtain by offering the advantage to the employee. The contracting authority will decide independently about the application and the amount of this fine.
- §195 This clause is without prejudice to the possible application of other measures as of right provided in the GIR, namely the unilateral termination of the contract and/or the exclusion from procurement by the contracting authority for a determined duration.

##### **4.14.1 Failure of performance (Art. 44)**

- §196 The contractor is considered to be in failure of performance under the contract:



- 1° when the delivery is not carried out in accordance with the conditions specified in the procurement documents;
- 2° at any time, when the delivery has not progressed in such a way that it can be fully completed on the due dates;
- 3° when he does not observe written orders, which have been given in due form by the contracting authority.

§197 Any failure to comply with the provisions of the contract, including the non-observance of orders of the contracting authority, is recorded in a report ('process verbal'), a copy of which will be sent immediately to the contractor by registered mail.

§198 The contractor must repair the defects without any delay. He may assert his right of defence by registered letter addressed to the contracting authority within fifteen days from the date of dispatch of the report (process verbal). Silence on his part after this period shall be deemed as acknowledgement of the reported facts.

§199 Any defects detected that can be attributed to the contractor render him liable to one or more of the measures provided for in Articles 45 to 49, 154 and 155.

#### **4.14.2 Fines for delay (Art. 46 and 154)**

§200 The fines for delay differ from the penalties referred to in Article 45. They are due, without the need for notice, by the mere lapse of the performance period without the issuing of a report and they are automatically applied for the total number of days of delay.

§201 Regardless of the application of any fines for delay, the contractor indemnifies the contracting authority against damages for which it is liable towards third parties due to late performance of the contract.

#### **4.14.3 Measures as of right (Art. 47 and 155)**

§202 When, upon expiry of the term given in Article 44, §2, the contractor has not taken action or has presented means deemed unjustified by the contracting authority, the contracting authority may apply the measures as of right described in paragraph 2.

§203 However, the contracting authority may apply measures as of right without waiting for the expiry of the term given in Article 44, §2, when the contractor has explicitly recognised the defects detected.

§204 The measures as of right are:

- 1° Unilateral termination of the contract. In this case the entire performance bond, or if no bond has been posted an equivalent amount, is acquired as of right by the contracting authority as lump sum damages. This measure excludes the application of any fine for delay in performance in respect of the terminated part;
- 2° Performance under regie of all or part of the non-performed contract;
- 3° Conclusion of one or more replacement contracts with one or more third parties for all or part of the contract remaining to be performed.

§205 The measures referred to in 1°, 2° and 3° will be taken at the expense and risk of the defaulting contractor. However, any fines or penalties imposed during the performance of a replacement contract will be borne by the new contractor.

## 4.15 End of the public contract

### 4.15.1 Acceptance of the services performed (Art. 64-65 and 156)

- §206 The managing official will closely follow up the services during performance.
- §207 The services will not be accepted until after fulfilling audit checks, technical acceptance and prescribed tests.
- §208 According to the situation, provisional acceptance is provided upon the completion of service delivery of the contract and, on expiry of a warranty period, final acceptance is provided marking full completion of the contract.
- §209 The contracting authority disposes of a verification term of thirty days starting on the final or partial end date of the services, set in conformity with the modalities in the procurement documents, to carry out the acceptance formalities and to notify the result to the service provider. This term commences provided that the contracting authority possesses, at the same time, the list of services delivered or the invoice. Upon expiry of the thirty-day term following the date stipulated for completion of the entirety of the services, depending on the case, an acceptance report or a refusal of acceptance report will be drawn up.
- §210 Where the services are completed before or after this date, it is the responsibility of the service provider to notify the managing official by registered letter, and at the same time to ask for the acceptance procedure to be carried out. Within thirty days after the date of receipt of the service provider's request, an acceptance or a refusal of acceptance report will be drawn up, depending on the case.
- §211 The acceptance specified above is final.

### 4.15.2 Invoicing and payment of services (Art. 66 to 72 – 160)

- §212 The invoicing shall be done by lot:
- In case the tenderer is awarded more than one lot, each lot shall be invoiced separately.
  - For Lot 2 (two schools in Gaza), the invoicing for both schools shall be done jointly.
- §213 The invoice must be in Euros.
- §214 The contractor sends (one copy only of) the invoices and the contract acceptance report (original copy) to one of the following addresses:
- |   |    |   |
|---|----|---|
| Enabel office in Ramallah<br>Belgian Development Agency<br>Royal Center Building, 7th Floor<br>Al Balou', Mecca Street<br>Ramallah - Al Bireh – West Bank | Or | Enabel office in Gaza<br>Belgian Development Agency<br>Rayyes Building, 4th Floor<br>Victor Hugo St., Rimal<br>Gaza |
|---|----|---|
- §215 The invoice will be signed and dated, and will include:
- To: "Enabel, the Belgian Development Agency";
  - the statement: 'Certified true and sincere for the amount of EUR .... (amount in words).'
  - the reference "PSE22001-10011 – Lot X - PP#Y" (where "X" is the lot number and Y is the sequential number of the progress payment on that lot)
- §216 Only service delivery that has been performed correctly may be invoiced.
- §217 The contracting authority disposes of a verification term of thirty days starting on the end date for the services, set in conformity with the modalities in the procurement documents, to carry

out the technical acceptance and provisional acceptance formalities and to notify the result to the service provider.

- §218 The amount owed to the service provider must be paid within thirty days with effect from the expiry of the verification term or with effect from the day after the last day of the verification term, if this is less than thirty days. And provided that the contracting authority possesses, at the same time, the duly established invoice and any other documents that may be required.
- §219 When the procurement documents do not provide for any separate debt claim, the invoice will constitute the debt claim.
- §220 No advance may be asked by the contractor and the payment is made after provisional of each service delivery of a same order.
- §221 In order for Enabel to obtain the VAT exemption as quickly as possible, the original invoice and all ad hoc documents will be transmitted as soon as possible before provisional acceptance.
- §222 No advance may be asked by the service provider.

#### **4.15.2.1 Payments for Design Works**

- §223 During the design phase, payment will be made only after final acceptance of the deliverables.
- §224 The design price will be paid to the Consultant as a **lump sum** as stated in their financial offer as follows:
- §225 Ten (10%) percent of each payment will be retained. This retention will be paid at the commencement of the construction works or six months after the completion of the design works whichever is earlier.
- §226 Obligations of the service providers shall continue with the information meeting, site visits during the procurement of the works, the contribution to answer potential technical questions by interested tenderers and the amendment of tender's annexes (plans, bills of quantities and technical specifications) if needed. The fees of these services are considered to be included in the prices of the Consultants for item 1.

##### **4.15.2.1.1 Payments for Management and Supervision Services**

- §227 During the works supervision and management phase, service payments will be paid to the Consultant in monthly instalments (progress payment) based on the price as stated in the financial offer (daily rate) and their timesheets. **The daily rate is considered for a full working day of 8 hours.**
- §228 For each lot, payment will be eligible and start at the date of the pre-construction meeting.
- §229 The price will be paid as in the service provider's financial proposal, according to each staff rate, and until the completion of the construction works of that site. The service provider shall provide time sheets for all staff.
- §230 The Contracting Authority has the right to reduce the number and type of personnel of the Service provider as it is deemed necessary by the Contracting Authority and the service provider shall accept this reduction of staffing. Personnel and staff members reduced will not be paid by the Contracting Authority. Rates mentioned in the financial offer will be applied in this case. This reduction may and/or may not reduce the obligations of the Service provider.
- §231 In all cases of delay during the implementation of the works, the service provider shall be paid as stated in his financial proposal (Both Costs and Conditions).

§232 The Consultant shall inform the Contracting Authority in writing as soon as 80% of his prices are becoming due (not necessarily paid). It is the responsibility of the Consultant to inform the Contracting Authority of the date of expiration of his contract at least one month prior to its expiration date and propose any extension. The Consultant will not be paid if (s)he continues providing his services without the written consent of the Contracting Authority.

§233 **Interim Payments to the Consultants.** Interim payments to the Consultants will be made upon the receipt of the following documents:

- Approved payment certificate and/or updated executed works sheets of the contractor
- Payment request by the Consultants
- Progress reports
- Site meeting minutes
- Deduction at the source certificate
- Formal invoice
- Time sheets of the staff members
- Technical reports for the electrical & mechanical engineers site visits (if requested)

§234 **Final Payment of the Consultants.** The final payment to the Consultants will be made upon the receipt of the following documents:

- Approved final payment certificate of the contractor
- Final payment request by the Consultants
- Declaration of final payment
- Final report
- Provisional Acceptance Certificate
- Site meeting minutes (if applicable)
- Deduction at the source certificate
- Formal invoice
- The performance bond covering the defects liability period (maintenance guarantee)
- Other requirements requested by the donor
- The final payment of the Consultants will not be paid unless the final payment of the contractor with all supporting documentation, is submitted to the Contracting Authority, checked and approved
- Submitting all updated drawings including VOs and all necessary information for the database.

#### **4.16 Litigation (Art. 73)**

§235 The competent courts of Brussels have exclusive jurisdiction over any dispute arising from the performance of this public contract. French or Dutch are the languages of proceedings.

§236 The contracting authority will in no case be held liable for any damage caused to persons or property as a direct or indirect consequence of the activities required for the performance of this contract. The contractor indemnifies the contracting authority against any claims for compensation by third parties in this respect.

§237 In case of 'litigation', i.e. court action, correspondence must (also) be sent to the following address:

► Enabel, public-law company  
Legal unit of the Logistics and Acquisitions service  
(L&A)  
To the attention of Ms Inge Janssens  
rue Haute 147  
1000 Brussels  
Belgium

## 5 Terms of reference

### 5.1 Introduction

#### 5.1.1 Enabel in Palestine

§238 Since 2000, the government of the Kingdom of Belgium, through the Belgian Development Agency (Enabel) has been supporting the Palestinian authority with a wide range of programs in the sector of education, ranging from curriculum development to school construction and including ICT, TVET, and the sector-wide support with the Joint Financial Arrangement (JFA).

§239 Since 2010, a bilateral Schools Construction Programme has been implemented, with four consecutive phases. The ongoing fourth phase is due to end in 2023, giving way to the new Portfolio, of which QEL project (see below) is part and under which the present contract will be implemented.

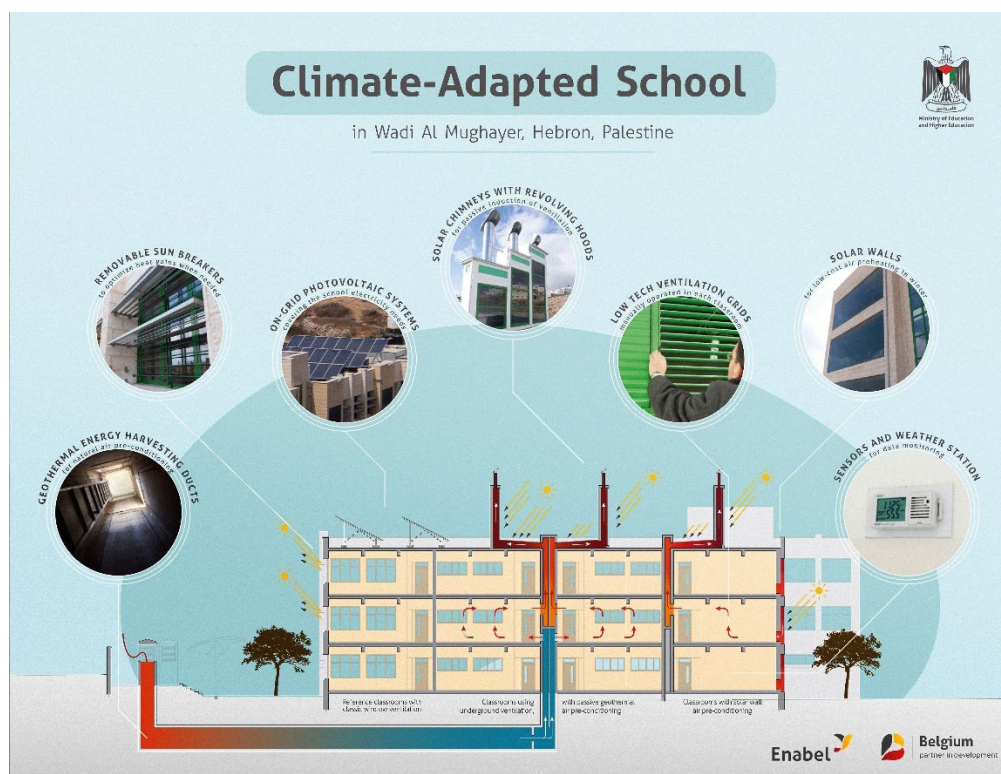
§240 The specific objective of the school construction programme was to increase the access to education in the Palestinian Territory through an improved infrastructure and the creation of a healthy, safe and eco-friendly educational environment.

§241 The last two phases (III and IV) of the programme had a strong thematic focus on the environment, promoting green building design, construction techniques and innovation, passive and climate-adapted architecture, green energy and environmental awareness activities.

§242 One flagship school, Dr. Hafez Abd al-Nabi al-Natsheh Primary School for Girls, was designed as a climate-adapted “Green” school in Wadi Al Mughayer, Hebron. This school has been the most innovative school building of the region in terms of bio-climatic architecture. It has unique features such as underground tunnels and solar chimneys harnessing geothermal energy and the wind to provide on-demand naturally pre-cooled or pre-heated natural ventilation to the classrooms, as well as solar walls, movable sun-breakers, PV panels, rainwater harvesting and improved thermal insulation and airtight windows.

§243 The different classrooms and ventilation ducts have been monitored for two years using multiple sensors, gathering information on temperature and humidity and the external weather. The data was analysed by international and local consultants, who confirmed the good behaviour of the building with minimal additional cost and low maintenance needs (these reports will be provided to the successful tenderers as, it contains valuable information about how the building and its innovations are behaving in the local climatic context of Hebron). However, the building does not have any additional mechanical or electrical heating or cooling system, meaning that the comfort in the classrooms is not adequate, in particular in winter, where additional heaters are still required.





### 5.1.2 New portfolio

§244 The Palestine Cooperation Strategy 2022-2026 was validated on 30th June 2021. Its focus is to empower youth in an environmentally sustainable Palestine. Two general objectives have been defined:

- Young people in Palestine develop into active and critical citizen, ready for local and global challenges, through improved education, training, guidance, and access to employment.
- The Palestinian population makes use of the opportunities of a sustainable environment.

§245 The first pillar of the portfolio embraces a multi-pronged approach that empowers youth across different dimensions: education, protection, civic engagement, employment, and entrepreneurship. The rationale is that in order for adolescents and youth to thrive, a set of integrated policies and programmes is needed that address the “whole person”<sup>1</sup>. The pillar is structured around three interventions, each linked to a Specific Objective of the Cooperation Portfolio and representing one or more of the dimensions for youth empowerment.

### 5.1.3 Quality Education and Learning (QEL) project

§246 The first intervention of the New Portfolio is Quality Education and Learning (QEL) project.

§247 Its specific objective is that boys and girls, young women and men access quality education and acquire STEAM and 21st century skills in a conducive learning environment.

§248 It has three results:

- R1: Increased access to general education in more conducive learning environments
- R2: Enhanced quality of general education & learning outcomes in STEAM & 21st century skills

- R3: Improved well-being and inclusion of vulnerable students

§249 The first result foresees the construction, retrofitting and/or extension of schools in Gaza and the West Bank, including East Jerusalem. It is foreseen to build **two new schools in Gaza and one eco-friendly school in Hebron**<sup>9</sup>, and in East Jerusalem, to create one school, retrofit three existing schools and build three extensions.

§250 **Building on successful previous school construction projects, all schools will follow low-energy sustainable design and construction principles, featuring innovating elements such as improved thermal insulation, passive ventilation, geothermal energy, solar walls and solar chimneys, PV systems, rainwater harvesting, low-energy materials, etc. To increase the intervention's visibility and to raise awareness, environmental certification (locally or internationally) will be sought for these buildings, where feasible.**

§251 The four new schools mentioned above are the object of this design consultancy.

#### 5.1.4 Palestine's NDC

§252 Palestine it is one of the most vulnerable countries to climate change considering its location in the Mediterranean region, a hot spot for climate change and its impact. The period between joining the UNFCCC in March 2016 and submitting the INCR and NAP in November 2016 was less than eight months, highlighting the importance of climate change within Palestine's national agenda. The State of Palestine's key climate goal is to reduce its climate vulnerabilities, primarily through increasing adaptive capacities, and, thereby, enhance the climate resilience of the national development process and local communities.

§253 The nation decided to revise its 2017 NDC targets in 2021 and increased its ambitions, a key ambition being raising its conditional greenhouse gas emissions reduction targets to 26.6% (instead of 24.4%) in an independence scenario and 17.5% (instead of 12.5%) in a status-quo scenario by 2040, compared to business as usual. Palestine also identified 12 sectors as "highly vulnerable" to climate change and out of these 12 action plans for 6 sectors (in 2021) including agriculture, energy, health, transport, waste, and water were developed in order to facilitate successful implementation of Palestine's NDC. Among the actions for the different sectors are for example the promotion of green buildings, harvesting of rainwater, improved energy efficiency by 20% and 20-33% of electricity to be generated from renewable energy by 2040, primarily from solar PV.

## 5.2 Objective of the consultancy

§254 The scope of this consultancy is to conceptualize and design four environmentally sustainable school buildings, simulate and assess their expected behaviour, their life-cycle environmental impact and running costs, support the procurement of their construction and supervise the implementation of the works until their final acceptance by the contracting authority, as well as, to obtain their environmental certification.

§255 The outcome shall be the construction of the four most eco-friendly school buildings in Palestine to date, featuring highly replicable and locally adapted innovations in the field of energy efficiency, reduction of greenhouse gas emissions, reduction of water and of raw materials consumption, the promotion of local and sustainable materials, the protection of

---

<sup>9</sup> The portfolio was foreseeing these three schools, later a new school in Al-Ezariyeh was proposed by the Ministry. Enabel is also planning to follow an environmentally friendly approach for all four schools.



the local environment from any kind of pollution and the contribution to the regeneration of local biodiversity, while offering a safe, healthy, comfortable, accessible, inclusive and child-friendly conducive learning environment to their end-users and minimizing the maintenance needs, the running costs and surcost not paid back during the lifecycle of the building.

§256 The specific objectives of this consultancy are:

### 5.2.1 Item 1 – Design Services

#### 1) During the design phase:

- To clarify the scope of the project by reviewing with the Contracting Authority and the Ministry of Education the architectural program, available budget of the four schools, the targets, constraints, and timelines and ensuring all stakeholders are aligned and have a clear understanding of what is expected from the project.
- To review the baseline assessment study of a selection of existing schools including an energy audit, water consumption survey and GHG emissions calculation (provided by the Contracting Authority) and reviewing the relative reduction targets (CO<sub>2</sub>, energy and water).
- To conduct a site analysis: to understand the site conditions, site context, zoning regulations, and other relevant factors that may impact the design of the building.
- To assess the technical, financial, and political feasibility of certain design choices, technologies, and alternative construction materials
- To develop an architectural concept and technological strategy presenting and comparing the cost and environmental benefit of several (minimum 3) options of innovations minimizing the energy consumption, greenhouse gas emissions, water and material consumption and pollution,
- Developing a schematic architectural design, using Building Information Modelling<sup>10</sup> (BIM) software to create a dynamic (parametric) 3D CAD, model providing live feedback of impact of design options on the environmental targets, including dynamic multi-zone simulation study of each building thermal behaviour (heat gains and losses, thermal inertia), natural lighting, net energy demand and estimation in the embodied GHG emissions and in-service water consumption and an estimated budget of construction and of running costs
- To develop a preliminary design for each school, further developing the BIM model and developing the aesthetics, construction materials and architectural functionality of the building and estimated budget. Several options shall be offered regarding the building materials and technologies with a cost/environmental benefit (energy/CO<sub>2</sub>/water) comparison.
- To prepare the detailed design of the buildings, including all architectural, structural, details, mechanical and electrical drawings, priced bill of quantity and technical specifications, as well as an updated environmental impact assessment and simulations done at the preliminary design step.
- To prepare any other document and calculation necessary for the obtention of an energy performance certification (e.g. Belgian PEB or Passive House) and from the Palestinian Higher Green Building Council

#### 2) During the works procurement phase:

---

<sup>10</sup> e.g. Revit, Archicad, etc,

- To assist the Contracting Authority in preparing all necessary annexes to the tender documents<sup>11</sup>: drawings, unpriced bill of quantities, cost estimate, technical specifications, implementation plan, and financial plan. Note: the tender will be launched using Belgian public procurement law. The general and specific contractual and administrative conditions of the tender will be drawn up by Enabel. Apart from the above-mentioned annexes, the consultants' advice may be solicited to establish the minimum required personnel, equipment, and financial capacity of the tenderers.
- To assist the Contracting Authority during the site visits and information meeting (pre-bid meeting) in answering in writing any technical questions and, if requested, preparing any necessary errata or amendments to the annexes.
- To assist, if requested by the Contracting Authority, in analysing the received tenders and potentially help review the normality of unit prices submitted by tenderers according to market prices and price breakdowns.

### 5.2.2 Item 2 – Works supervision and management services

#### 1) During the works implementation phase:

- Supervise all construction activities from the site hand over till the preliminary acceptance in accordance with the terms and conditions of the construction contract and its annexes.
- To participate in all site **meetings**, including the pre-construction meeting, weekly meetings, provisional acceptance, and final acceptance inspection visit and draft the minutes and attendance sheets.
- To make frequent site visits to schools during the implementation and defect liability periods, collecting observations that may arise and instruct the contractor to implement them under their supervision.
- To provide the Contracting Authority with frequent technical and financial **reports** (monthly, quarterly, final, etc.) regarding the progress of the works and the conditions of each individual site, investigate the obstacles and recommend practical remedies.
- To ensure that the works are well controlled in terms of **quality** of workmanship and materials and ensure they are executed according to the works contract and its annexes (drawings, bill of quantity and technical specifications) and what is considered good practice, obtaining timely samples and data sheets for all required items and ensuring on-site and laboratory testing where appropriate.
- To ensure that the works are carried out in a **timely manner**, by promptly obtaining a detailed and realistic implementation schedule from the contractor, reviewing it, monitoring the actual progress of the works according to this baseline, ensuring it is constantly updated and ensuring quick problem solving by making proposals of adjustments in the sequencing of the works or propose variation orders.
- To ensure constant **budget** monitoring of the works, by measuring and reviewing the quantities of each item in the Bill of Quantity according to change in plans and variation orders and ensuring the construction budget is controlled and the Contracting Authority informed in real time of any deviation from the cost estimate.
- To ensure **safety** of workers and visitors is properly monitored, defining a safety plan and ensure safety measures are properly implemented at all times and reporting any incident.

---

<sup>11</sup> Works will be contracted directly by Enabel, using Belgian public procurement law. Enabel is responsible for drafting and finalizing the general and specific administrative clauses of the tender document and ensure their compliance with Belgian law.

- To prepare variation order and **amendments** preparatory documents, drafting the justification of the needed changes, explaining and documenting their unforeseen nature (if applicable), analysing price breakdowns and verifying the market prices for new unit prices to be set and negotiated.
- To ensure a smooth processing of **payments** for works, by reviewing first, partial progress and final payments submitted by the contractor, reviewing and controlling all quantities and documenting them with measurement sheets and ensuring their accuracy and regular and swift transmission to the Contracting Authority
- To coordinate and support the different **acceptances** of works (preliminary technical acceptance and provisional acceptance), ensuring timely obtention of necessary documentation and presence of necessary parties, participating in the acceptance committee, sharing the notes to the contractor and actively following up on the implementation of related remedial measures.
- To assist in establishing a **maintenance guide** for the school buildings, detailing recommended routines for daily, weekly, monthly and yearly maintenance steps to be taken, the appropriate modality, products and tools to undertake them, their estimated cost and expertise or qualification needed.
- During the project implementation and until the final acceptance, to attend the visits from internal and external auditors to the project, when required.

*2) During the Defects Liability period:*

- To frequently monitor and inspect the project and/or make inspection upon the request of the Contracting Authority and order the contractor to perform any repair, amendment, reconstruction, rectification or any other works deemed necessary before issuing the final acceptance certificate.
- To perform frequent visits to the project (min. once every month during the first three months and every 3 months thereafter and when requested by the school principal) and should, by coordination with the contractor, prepare a report about that visit and submit it to the Contracting Authority.
- To ensure the final acceptance takes place before the expiry date of the performance bond covering the defects liability period, ensuring a timely inspection of the works and implementation of remedial measures before the deadline.
- The Service provider shall provide a written report of the inspection to the Contracting Authority and the contractor regarding the final acceptance of the works or corrective measures and actions to be taken by the contractor.
- The Service provider shall monitor all corrective works under warranties or guarantees, and submit a written report accompanied with a final acceptance certificate stating deductions, if any, from the maintenance guarantee.

## 5.3 School programme and location

### 5.3.1 Lot 1 - Bakri school in Hebron

#### 5.3.1.1 Site location

- The site is located at the North-East end of Hebron, in Area H2. GPS location: 31.5455, 35.1126.
- Approximate plot boundaries are highlighted in red on the map below.
- The plot of land has an approximate area of 5500 m2. It has a relatively high declivity. A new road, connecting the Northeast of Hebron with Bani Salim Road (Area C) is planned by the Municipality of Hebron (orange double dotted line).



#### 5.3.1.2 Programme

- School level: 5-9 grades
- Gender: girls
- No. of classrooms: 16
- No. of students per class: 40
- Internal and external parking space,
- Playgrounds, shaded assembly areas, and green areas.

The needed built functions and their estimates areas are shown in the table below:

No.	Function	No. of Students per Unit	No. of Units required	Net Area in m2 per Unit	Total Area in M2
1	Classrooms	40	19	49.8	946.2
2	Library		1	65	65
3	Administration Unit				299.4
	A. Headmaster Room		1	30	30
	B. First Aid		1	15	15
	C. Door Keepers and kitchen		1	10	10
	D. Teachers Room		3	49.8	149.4
	E. Social Worker		1	15	15
	F. Secretary		1	20	20

No	Function	No. of Students per Unit	No. of Units required	Net Area in m2 per Unit	Total Area in M2
	G. Administration Toilets		2	15	30
	H. Archive and copy machine		1	15	15
	I. Sports equipment store		1	15	15
4	Multi-purpose hall	40	1	84	84
5	Biology & Chemistry lab+ Store+ prep.	40	1	84	84
6	Physics lab. + Technology & Applied Science				
7	Technology/STEM Lab.	40	1	84	168
8	General Stores		2	20	40
9	Toilets (each including 8 toilet units) Including 1 disability toilet in the building		3	49.8	149.4
10	Canteen		1	16	16
11	Lobby		1	60	60
	Total				1912
	Area of Walls and Corridors 65% (estimate)				1242.8
	<b>Total Built-up Area</b>				<b>3154.8</b>



### 5.3.2 Lot 2 – Two schools in Gaza

#### 5.3.2.1 Site location

§257 The two school plots, one for Gaza basic school, the other one for the Secondary school, are located in the center of the city of Gaza, in Tal Al Hawwa zone, on Jama'a Al Dowal Alarabiyyah street, behind the Islamic and Al Azhar Universities of Gaza. GPS: 31.5130, 34.4369 and 31.5123, 34.4380.

§258 The two plots (in dashed red lines on the aerial image below) are similar in size (approx. 3500 m2) and are situated in close proximity to each other in the same street. However, they are not adjacent: two other plots separate them from each other.

§259 The two different schools have not yet been assigned one of the two plots in particular. The consultants will be able to provide advice at the beginning of the design phase if one plot is more suitable for one of the two schools in particular, before a decision will be taken by the MoE and Enabel.

§260 One of two plots has some temporary constructions situated on it ; they will be demolished before or as part of the project, so the two plots shall be considered as empty. The land is almost flat.



#### 5.3.2.2 Gaza Basic School Programme

- School level: 5-9 grades
- Gender: girls
- No. of classrooms: 20
- No. of students per class: 40
- Internal and external parking space,
- Playgrounds and green areas.

§261 The needed built functions and their estimates areas are shown in the table below:

Nº	Function	No. of Students per Unit	No. of Units required	Net Area in m2 per Unit	Total Area in M2
1	Classrooms	40	20	49.8	996
2	Library		1	65	65
3	Administration unit				299.4
	A. Headmaster room		1	30	30
	B. First aid		1	15	15
	C. Door keepers and kitchen		1	10	10
	D. Teachers room		3	49.8	149.4
	E. Social worker		1	15	15
	F. Secretary		1	20	20
	G. Administration Toilets		2	15	30
	H. Archive and copy machine		1	15	15
	I. Sports equipment store		1	15	15
4	Multi-purpose hall	40	1	84	84
5	Biology & Chemistry lab+ Store+ prep.	40	1	84	84
6	Physics lab. + Technology & Applied Science				
7	Technology/STEM Lab.	40	1	84	84
8	General Stores		2	20	40
9	Toilets (each including 8 toilet units) Including 1 disability toilet in the building		3	49.8	149.4
10	Canteen		1	16	16
11	Lobby		1	60	60
	Total				1877.8
	Area of Walls and Corridors 65% (estimate)				1220.57
	<b>Total Built-up Area</b>				<b>3098.37</b>

### 5.3.2.3 Gaza Secondary School Programme

- School level: 10-12 grades
- Gender: girls
- No. of classrooms: 20
- No. of students per class: 40
- Internal and external parking space
- Playgrounds and green areas.

§262 The needed built functions and their estimates areas are shown in the table below:

Nº	Function	No. of Students per Unit	No. of Units required	Net Area in m2 per Unit	Total Area in M2
1	Classrooms	40	20	49.8	996
2	Library		1	65	65
3	Administration Unit				299.4
	A. Headmaster Room		1	30	30
	B. First Aid		1	15	15
	C. Door keepers and kitchen		1	10	10
	D. Teachers Room		3	49.8	149.4
	E. Social Worker		1	15	15





- Gender: girls
- No. of classrooms: 9
- No. of students per class: 40
- Internal and external parking space,
- Playgrounds and green areas.

§263 The needed built functions and their estimates areas are shown in the table below:

No.	Function	No. of Students per Unit	No. of Units required	Net Area in m2 per Unit	Total Area in M2
1	Classrooms	40	9	49.8	448.2
2	Library		1	65	65
3	Administration unit				184.8
	A. Headmaster room		1	30	30
	B. First aid		1	15	15
	C. Door keepers and kitchen		1	10	10
	D. Teachers room		2	49.8	99.6
	E. Social worker		1	15	15
	F. Secretary		1	20	20
	G. Administration Toilets		2	15	30
	H. Archive and copy machine		1	15	15
	I. Sports equipment store		1	15	15
4	Multi-purpose hall	40	1	84	84
5	Biology & Chemistry lab+ Store+ prep.	40	1	84	84
6	Physics lab. + Technology & Applied Science				
7	Technology/STEM Lab.	40	1	84	84
8	General Stores		2	20	40
9	Toilets (each including 8 toilet units) Including 1 disability toilet in the building		1	49.8	49.8
10	Canteen		1	16	16
11	Lobby		1	60	60
	Total				1115.8
	Area of Walls and Corridors 65% (estimate)				669.48
	<b>Total Built-up Area</b>				<b>1785.28</b>

## 5.4 Design standards and specifications

§264 The project aims at developing four schools as beacons of sustainability in Palestine. They shall outperform existing school designs in terms of environmental sustainability and comfort, while not compromising their social sustainability and also remaining highly replicable as a concept to be used for other schools by Palestinian public funds and other international donors. Here below are described the different specifications and standards to be respected, including **21 specific targets** to be achieved.

### 5.4.1 Environmental sustainability

#### 5.4.1.1 Climate change targets

##### Energy efficiency

§265 A major focus of the design shall be the building energy efficiency.

§266 The building envelope and its orientation shall be designed in such a way that it optimizes the heat gains from the sun in colder days and minimizes it in hotter days, makes use of the wind and natural ventilation as much as possible, while minimizing the heat losses through the envelope through a high level of thermal insulation.

§267 The building envelope and ventilation system shall be designed in such a way to reach the **Passive standard (classic) for non-residential buildings**, i.e. for which thermal comfort (ISO 7730) can be achieved solely by post-heating or post-cooling of the fresh air mass, without the need for additional recirculation of air. See also: 5.4.1.7 Environmental Certification, p.54.

§268 For non-residential buildings, the passive standard entails the following targets<sup>12</sup>:

- **Target 1** - A net energy requirement for heating under 15 kWh/(m<sup>2</sup>.year). This requirement is to be calculated using PHPP software and/or using a dynamic simulation program.
- **Target 2** - A net energy requirement for cooling under 15 kWh/(m<sup>2</sup>.year). This requirement is to be calculated using PHPP software and/or using a dynamic simulation program.
- **Target 3** - An envelope airtightness under 0.6 vol/h<sup>13</sup>
- **Target 4** - A probability of overheating risk with hours of overheating (> 25° C) not exceeding 10% of occupation time. Probability to be estimated by dynamic simulation.
- **Target 5** - A primary energy consumption under 120 kWh/(m<sup>2</sup>.year). This consumption is to be calculated using PHPP software or dynamic simulation software.

#### Green energy

§269 **Target 6** - All building energy needs shall be covered by solar energy produced on site, including PV systems and solar water heaters.

§270 In the West Bank, the systems may be on-grid systems only ; in Gaza, given the frequent power cuts and limited production of electricity, the systems shall be hybrid with batteries, with enough storing capacity to cover the needs for two days without interruption.

§271 Roof area permitting, a larger PV system may be requested by Enabel to produce more electricity than the school needs, using a feed-in tariff to generate income.

#### GHG emissions reduction target

§272 Separately from the energy performance of the buildings, the four schools will also aim at reducing the CO<sub>2</sub> emissions not related to energy which embodied in the construction materials. The major part of these emissions are related to the production of carbon dioxide as a byproduct of the chemical conversion process used in the production of clinker, a component of **cement**, in which limestone (CaCO<sub>3</sub>) is converted to lime (CaO).

§273 **Target 7** - The design shall lead to a **reduction by 20%** of the these non-energy related CO<sub>2</sub> emissions embodied in construction materials, as compared to current schools built in Palestine. For this, a baseline study is being carried out by Enabel, to calculate the current average CO<sub>2</sub> emissions from previous school designs, the results of which will be shared with the successful tenderer(s).

---

<sup>12</sup> For a complete description, see: [https://passiv.de/downloads/03\\_certification\\_criteria\\_nonresidential\\_en.pdf](https://passiv.de/downloads/03_certification_criteria_nonresidential_en.pdf)

<sup>13</sup> Measured at 50 Pascals pressure (ACH50), as verified with an onsite pressure test (in both pressurized and depressurized states).

§274 Reaching this target may involve using alternative structural design or building materials or both. Structural design may be done in a way that would lead to a reduction of the quantities or raw materials needed, in particular concrete, by using hollow sections or arches, for example. Alternative materials could be alternative masonry elements for the partition works, for example compressed stabilized earth blocks (CSEB), aerated autoclaved concrete (AAC), hempcrete, etc. Proposals for such materials will be made by the consultants during the technical feasibility analysis.

#### **5.4.1.2 Water consumption and treatment**

##### **Introduction**

§275 Water is very scarce in Palestine and even scarcely available to Palestinians.

§276 From a weather perspective, precipitation averaged 489.60 mm from 1901 until 2021, reaching an all time high of 801.48 mm in 1944 and a record low of 201.97 mm in 2017. The trend and prospects of precipitation in the coming decades are grim: annual rainfall is currently decreasing and extreme events and slow-onset changes related to Climate Change are expected to cause a further decrease in the availability of water resources. The mean annual precipitation is expected to decrease by up to 30% until 2050, continuing with higher levels of significance until 2100.

§277 Meanwhile, the Palestinian population is growing fast (2.4% nationally; while the population of Gaza is predicted to double over the next 30 years) and the increasing temperatures are expected to lead to a further increase in demand of water. Efforts to meet this demand may lead to a reduction in groundwater quantity, which would damage ecosystems and soil health.

§278 As part of the occupation of Palestinian territory, Israel controls 97% of the water sources and water infrastructures of the territory.

§279 In Gaza, the long-term Israeli blockade has caused a serious deterioration of water security. Israel's blockade of Gaza severely limits materials from entering, making it incredibly difficult to develop water and sanitation infrastructure to meet the needs of a growing population. Hence, currently, 97% of available water in the Gaza Strip is undrinkable due to the contamination of the over-pumped coastal aquifer. The quality of water resources may also reduce as a result of runoffs following heavy rain events and floods. This may lead to contamination of water and food resources, and subsequent impacts on people's health.

##### **Water recycling and efficiency**

§280 To reduce the net primary consumption of water of the buildings, it is proposed to develop a three-track approach:

- Increase the efficiency of water consumption devices, such as toilet flushes and taps
- Ensure a full recycling of water on site, through grey and black wastewater treatment and closed-circle reuse for non-drinkable purposes, such as cleaning and toilet flushing
- Harvest rainwater, where feasible and necessary, to complete the needs not covered by recycling, including for irrigation

§281 To avoid any health hazards and comply with local health regulations, two segregated water networks shall be foreseen in the schools: one for drinking purposes (which shall include drinking fountains, kitchen and lab sinks, handwashing taps and bidet showers — “shattafa”), and one for non-drinkable uses: floor cleaning, toilet flushes and irrigation.

### Drinking water network

§282 In Hebron and Al-Ezariyeh schools, since drinkable piped water is commonly available from the network, and since drinking water constitutes a minimal amount of water consumption, it is proposed to supply the drinking water network from the municipal supply. If the water quality at the exit of the tap is expected to respect health regulations, no further water pre-treatment may be foreseen at school level.

§283 **Target 8** - In Gaza, since water is not drinkable, a specific treatment (in particular a brackish water de-salination system) shall be foreseen, to avoid having to rely on delivery of water by trucks. This system is already in use in some schools in Gaza, from which practical experience and lessons learned shall be gathered in terms of maintenance and cost of use. Water shall be treated to be compliant with the applicable Palestinian standards.

§284 **Target 9** – 100% of wastewater from the drinking water taps shall be collected and reused for other purposes, either by being directed to the non-drinking wastewater treatment plant, or for direct reuse such as irrigation or cleaning.

### Non-drinking water network

§285 **Target 10** – Grey and black water shall be collected and treated locally in an efficient wastewater treatment plant to reach a concentration of Biochemical Oxygen Demand below 30mg/litre and recycled to operate in a near-closed circle.

§286 The plant shall be designed to deal with the specific characteristics of school sewage:

- A large number of toilet flushes and greater organic loadings, resulting in high concentrations of ammonia
- Regular short periods with no loading, with no loading to plant between late afternoon and morning
- Little to no use during the summer months, with a rapid start up at beginning of school term
- Automatic operation and low maintenance requirements as no specialist staff onsite
- Small footprint due to site restrictions

§287 This water shall be reused for flushing toilets, floor cleaning, irrigation, and if possible to supply water flow to tanks designated for fire prevention in accordance with Civil Defense requirements. Furthermore, to avoid drinkable water being used for floor cleaning, specific taps shall be provided at the right height to allow for bucket filling.

#### 5.4.1.3 Raw material consumption

§288 **Target 11** – The building design and the construction materials used shall aim at a reduction of 20% in the consumption of non-renewable virgin material resources. These virgin resources include non organic materials such as aggregates, stone or steel made from iron ore that are issued from quarries and not from recycling processes.

§289 Reaching this target may involve using alternative structural design or building materials or both, as for the GHG emission reduction target. Structural design may be done in a way that would lead to a reduction of the quantities or raw materials needed, in particular concrete, by using hollow sections or arches, for example. Alternative materials could also be proposed, using organic materials (such as wood, cork, hempcrete, plant-based polyurethane, clay, rubber) or recycled materials, such as recycled concrete (under study in Gaza as part of another project by Enabel) and or recycled steel.

#### 5.4.1.4 Biodiversity

§290 **Target 12** – The buildings shall not damage their local ecosystem negatively, and should contribute positively to restoring local biodiversity.

§291 The biodiversity of the natural environment and the surrounding areas will have to be considered to avoid endangering the native species, habitats and ecosystems that are present on the selected site.

§292 For this reason, it will be important to limit the intensity, duration and the amount of pollution during the entire life cycle of the schools. The design and works supervision modalities will seek to minimize the impact on the site and surrounding ecosystems, during the works (e.g., minimizing vegetation cutting, excavations, noise, and dust pollution) and when the building is in use. It is important to study and preserve the ecological connectivity of the ecosystem, including the natural drainage of rainwater.

§293 Regenerating damaged ecosystems on site could also be done through the reintroduction of at-risk plant species or plants which are supportive to threatened animal species, such as bees or birds. This includes planting native plants currently found on site. These plants are suited to the climate, require almost no extra water and can restore the soil.

§294 Green roofs and walls may also be incorporated into the design, as these can offer new habitats for plants and insects that may have lost their habitats due to increased construction in the area and contribute to reducing the heat island effect.

§295 Another example of contribution could be the provision of modular bricks that can serve as bee houses, bird houses and planters. They can partially mitigate the loss of habitat due to increasing urbanization.

#### 5.4.1.5 Local materials

§296 **Target 13** – The building materials will feature at least 30% local materials or imported materials with a lower environmental impact than local materials.

§297 Using local materials has the benefit of reducing the significant environmental impacts of transporting materials long distances. It can also encourage vernacular building styles and support the local economy.

#### 5.4.1.6 Local pollution

##### Water

§298 The recycling of water on site shall lead to minimal amounts of water being released outside of the school compound. Nevertheless, should any water have to flow out of the school premises in the form of direct environmental disposal or urban sewage, this water shall be treated accordingly.

§299 **Target 14** – Wastewater exiting the school compound shall be treated up to a maximum value of Biochemical Oxygen Demand of 10 mg/litre for direct environmental disposal and 300 mg/litre for disposal to sewer systems connected to a wastewater treatment plant.

##### Solid waste

§300 Although most of solid waste management is related to processes and awareness, a few elements of the design of the infrastructure can contribute to better practices.

§301 Separating, reducing, reusing, recycling and composting are good options for managing school waste. This needs to be studied during the design phase for each location, for



example, if commercial recycling companies are located near the school. If applicable, labelled bins should be provided for each type of waste including glass, paper, plastic, metal and organic waste.

- §302 Each classroom should have a paper recycling bin to implement the recycling of old papers. Many students will only use the bins that are right in front of them. Glass, cans, and organic waste bins can be placed in the eating area where students can get rid of any of their food waste. Compost boxes should be designed and incorporated as part of the school garden.
- §303 Also, the design should aim to reduce the needs of excavation and backfilling and where possible to compensate one with the other, so as to minimize the transportation of soil and reduce the disposal of excavations in dumping sites.
- §304 **Target 15** – 100% of the materials leaving the construction site (demolition materials, excavated soil or rocks) shall be disposed in a controlled and environmentally friendly way, preferably through reuse or recycling.

#### **Light pollution**

- §305 Light pollution has several negative impacts; it can interfere with wildlife migratory and breeding patterns, can cause birds death who will not see the glass windows, waste energy, lead to glare issues, and impact human metabolism and disrupt sleep.
- §306 To reduce light pollution an evaluation of the outdoor lighting requirements is needed (i.e., aesthetics, security, or utility), to eliminate unnecessary lighting, and to strategically place energy-efficient lighting and controls to meet the remaining lighting requirements.
- §307 The design should consider downlighting, solar powered LED lights for outdoor pathways, and lighting controls such as motion detectors, photosensors, and schedule controls, to enhance an energy efficiency and security while reducing light pollution.

#### **5.4.1.7 Environmental Certification**

- §308 Two types of environmental certification shall be obtained.
- **Target 16** – The first is the certificate for the Passive Standard (Classic) for Public Buildings, emitted by a recognized body such as PassivHaus Institut.
  - **Target 17** – The second certification shall be from the Palestinian Higher Green Building Council, and show the building reached the gold standard.
- §309 The obtention of this certification shall be the responsibility of the Consultants, through adequate design and supervision of the works. Inspection costs, tests costs and certification costs are not included in the cost of the consultancy (See: Elements included in the price, p.17).

#### **5.4.2 Social sustainability**

##### **5.4.2.1 Safety and health**

###### **General safety**

- §310 The design should comply to the good practices relating to the safety of students while using the school facilities, for example, the height of railings, finger protectors on doors, protected edges, non-slip tiles, height of electrical sockets, etc.

###### **Fire prevention**

- §311 The design shall comply with the requirements of the Palestinian Code for Fire Prevention and Safety, First Edition 2021 for all aspects related to, but not limited, building



classification, site accessibility, emergency and fire prevention, insulation, and electromechanical requirements.

#### **Earthquake resilience**

- §312 The buildings and non-structural components shall be designed in accordance with the latest edition of the Jordanian National Building Code.
- §313 Seismic and wind design data shall be obtained from reliable sources in the region and are to be carefully presented and documented.
- §314 The structural system shall provide continuous load paths, with adequate strength and stiffness to transfer all seismic and wind forces from the point of application to the point of final resistance.
- §315 Non-structural components are architectural, mechanical, and electrical items that are permanently attached to and supported by a structure but are not part of the structural system.

#### **Indoor air quality**

- §316 Although indoor CO<sub>2</sub> levels are typically below 1000 ppm, having over 20 students and teachers in an enclosed classroom would naturally raise the CO<sub>2</sub> levels and it is not uncommon that CO<sub>2</sub> levels can go beyond 3000 ppm. This can even be exacerbated by the target of airtightness of the building envelope (0.6 vol/h). Levels above 1000 ppm may affect negatively the student's health, their ability to focus and learn new information.
- §317 Therefore, indoor air quality monitors shall be planned to properly monitor and measure carbon dioxide, temperature, and relative humidity, and optimize mechanical ventilation of the spaces.
- §318 **Target 18** – The buildings and systems shall be designed to ensure a maximum level of CO<sub>2</sub> of 1000 ppm in the classrooms.
- §319 As per the passive standard, the average ventilation volumetric flow must be determined based on a fresh air demand of at least 17 m<sup>3</sup>/h per child from age 12 to 18 years and at least 15 m<sup>3</sup>/h per child younger than 12 years.
- §320 The Volatile Organic Compounds (VOC) pollutants are also another point of attention, as they are among the leading indoor air pollutants causing severe health issues for children and adults. Construction materials, furnishings such as desks and shelves, resins of wood products, adhesives, glues, paints, cleaning chemicals, and carpets are primary VOC emission sources in schools. The VOC concentrations in newly built school buildings are significantly higher.
- §321 **Target 19** – All finishing materials of walls, ceilings, flooring and furniture, including wall paint, shall be selected to minimize the emission of VOCs.

#### **5.4.2.2 Inclusivity**

##### **Accessibility**

- §322 Access to persons with a reduced mobility shall be guaranteed to as many classrooms as possible and spaces should be adapted to allow the use and access to the main facilities like playground, toilets and all specialized classrooms, such as labs, libraries etc.

§323 The design shall comply with the "Design requirements for the structure according to needs especially for people with disabilities" 2nd edition, 2014 issued by the Palestinian Engineering Association, and international standards and good practices.

§324 The decision to install an elevator, granting access to other floors, will be decided jointly by the MoE and Enabel during the design phase, based on considerations of budget, safety, electricity consumption and maintenance.

#### **Visual impairment**

§325 The school design shall follow the applicable technical standards from the MoE on accessibility to low vision users. These standards will be provided to the successful tenderer(s) after awarding, but entail mainly ensuring high colour contrast, braille, textured surfaces, clear paths, suitable lighting, etc. ...

#### **Gender**

§326 Gender equity shall be pursued in all aspects of design.

§327 For example, the number of toilets and total toilet area shall not be equal between males and females, but the toilets shall be designed to aim for equal **queuing times** between females and males. To achieve this equitable access to facilities, typically, international standards recommend around 1.6 times more toilets for women than for men.

§328 Furthermore, the specific cultural needs of women and girls in Palestine shall be taken into account in the design, including sports playgrounds.

#### **5.4.2.3 Comfort**

§329 Notwithstanding the energy efficiency targets, the classrooms and administrative offices shall still provide an acceptable level of thermal comfort in all seasons.

§330 This will be achieved by adequate HVAC mechanical ventilation with heat recovery (MVHR) systems and/or Ground Source Heat Pumps (GSHP).

§331 **Target 20** – The classrooms and administrative offices shall offer a thermal comfort of level B as per the ISO 7730:2005 standard, i.e. with a range of acceptability with predicted mean vote (PMV) situated between the values of -0.5 and +0.5 and a PPD of less than 10%.

#### **5.4.3 Economic sustainability**

##### **5.4.3.1 Replicability of innovations**

§332 Both Enabel and the Palestinian Ministry of Education are interested in developing, through the design of these four schools, concepts which are highly replicable to other schools in the future. When evaluating several options of design, they shall not be judged only in terms of how effective they are and their own impact (in terms of GHG emissions, energy efficiency, water efficiency, etc), but also on which one has the highest potential of being adopted widely for the design of all future schools, and therefore benefit from a multiplier effect.

§333 For this reason, the additional cost of innovations (as compared to business as usual) shall be limited, to ensure they remain replicable on other projects.

§334 However, some innovations will have a large initial investment cost but may bring some savings on the running costs of the schools (reduced electricity bills, water bills, etc), where a payback period of the investment may be calculated. Such pay-back investments shall not be considered as extra costs.

§335 **Target 21** – The total extra cost of innovations that are not paid back within 10 years of use shall be limited to 15% of the cost of existing school designs.

#### **5.4.3.2 Low cost and easy maintenance**

§336 The issue of maintenance and maintenance-friendliness of infrastructure is of paramount importance in the design of schools. Consultants will have to exert utmost care to develop design details which will facilitate the maintenance, on a daily basis and in the long term.

##### **Cleaning**

§337 Floor cleaning shall be facilitated careful design details in all places.

§338 A specific attention shall be brought to the design of the toilet area, whose cleaning shall be facilitated by attention to details, such as reducing the number of edges and corners, protection of wood or metal from moisture and corrosion, privileging continuous smooth surfaces and rounded angles.

§339 A special attention shall be brought to listening to the needs, practices, lessons and advice from janitors and other school staff from neighbouring schools, in order to facilitate their work (placement of floor drains, staircase steps edges, closets for cleaning tools and products).

##### **Longer term maintenance**

§340 The need of maintenance of appliances, mechanisms and systems shall be carefully anticipated. Imported appliances which cannot be repaired locally due to a lack of skilled personnel in the country or due to restrictions in importing spare parts shall be avoided. This is especially true for Gaza, where some materials are classified as “dual use items” and see their importation restricted. If needed, spare parts for such item shall be foreseen and delivered before the works are completed.

§341 The design shall also take into consideration the current design of standard furniture supplied by the MoE and evaluate if it can be used or improved as a standard, instead of providing alternative models without a rationale. This is to ensure compatibility and allow easy maintenance of furniture and equipment, for which standard spare parts are commonly procured in bulk and distributed to all schools.

##### **Prevention of vandalism**

§342 Public schools are prone to damage or vandalism by the students. While this can sometimes be dealt with by the education and awareness raising, this risk has also to be taken into account as a fact during the design and implementation of the works, by combining creative approaches of durable protections and/or psychologically-aware design. For example, it has been studied that in the field of public transports, certain kind of surfaces are more prone to graffiti than others, with successful use of alternative materials. Large plain and light-coloured surfaces with a smooth texture tend to attract graffiti more than rough, textured and natural materials.

#### **5.4.4 Educational standards**

##### **5.4.4.1 Classroom environment**

§343 The different general and specialized classrooms will have to abide by the MoE’s standards in terms of size and use, unless improvements are proposed and agreed with them. These specifications will be provided to the successful tenderer upon awarding.

#### 5.4.4.2 Child friendliness

- §344 Schools are not merely “shelters” within which children are “educated” and schooling takes place. Rather – school buildings are an integral part of the educational process itself. Indeed, the quality of the environment created by the architect and all involved engineers will impact on the quality of the education to take place. A school must be a place where a child feels free and can develop, mature, grow up.
- §345 Therefore, the design proposals shall take into account the general recommendations of the UNICEF Child-Friendly Schools manual, available on the link: [Child-Friendly-Schools-Manual.pdf \(unicef.org\)](https://www.unicef.org/manuals/files/Child-Friendly-Schools-Manual.pdf).
- §346 The variety of ages and body sizes within the school will also have to be taken into account in the design of the furniture, taps, sinks, toilets, windows height, stairs, etc. A special focus has to be brought to the use of child friendly colors and materials in the design of the interior space and furniture.
- §347 All designs need to focus not only on the quality and atmosphere of interior spaces, but also on the design of high quality external spaces. A well-considered landscaping concept with natural and artificial shading of spaces and appropriate surface runoff water retention areas.

## 5.5 Performance modalities and deliverables

### 5.5.1 Reconnaissance and Program Analysis Phase

- §348 The scope of this first phase is:
- To review the architectural program and available budget of the four schools with the Contracting Authority and the Ministry of Education.
  - To review the baseline assessment study of a selection of existing schools including an energy audit, water consumption survey and GHG emissions calculation (provided by the Contracting Authority) and reviewing the relative reduction targets (CO<sub>2</sub>, energy and water).
  - To assess the technical, financial, and political feasibility of certain design choices, technologies, and alternative construction materials.
- §349 This phase includes reviewing and studying all the data provided by the Contracting Authority including all assessment studies, surveys, programs of functions and the budget.
- §350 It also includes conducting visits to the project site(s) to obtain a thorough understanding of the site conditions, site context, zoning regulations, and other relevant factors that may impact the design of the building(s); including carrying out an initial environmental impact assessment.
- §351 Consultants shall meet with the Contracting Authority and the Ministry of Education to discuss their findings, constraints, timelines, set targets and dissipate any doubts.
- §352 This phase also includes providing a proposal of intended **list of innovations and technological choices** that can realistically be integrated into the school design to reach the targets mentioned above. These may include standards, technologies, concepts, materials and ideas from other projects around the world and deemed suitable for the local context. Each innovation shall be accompanied by a sketch or a reference picture and a description of how it will contribute to the design targets.

§353 The Consultants shall gather any additional data that is needed for project design. The Consultants shall confirm that the projects are justifiable and feasible for implementation within the approved budget allocation.

**Deliverable #1:** Provide a program analysis report containing the coordinated project scope, supplemented by all other information necessary to form a complete basis for the project design, including a list of proposed innovations each with initial price estimate and impact on targeted indicators. It shall also list initial environmental impact assessment findings and include several scenarios matching with the global budget of the intervention. (Electronic document in English, in editable format and pdf, to be submitted by email).

### 5.5.2 Conceptual phase

§354 Based on the results of the first phase, the scope of this second step is to develop an architectural concept and technological strategy presenting and comparing the cost and environmental benefit of several options (minimum 3) of innovations minimizing the energy consumption, greenhouse gas emissions, water and material consumption and pollution, and their integration.

**Deliverable #2:** Provide an **architectural concept including topographic plans and technological strategy**. It shall include sketches, showing how the different innovations may be integrated and adapted to the sites, their area, slope and orientation (Electronic document in English, in editable format and pdf, to be submitted by email).

### 5.5.3 Schematic design phase

§355 Based on the approved architectural concept, consultants will then develop a preliminary design for each school, using Building Information Modelling<sup>14</sup> (BIM) software to create a dynamic (parametric) 3D CAD model providing live feedback of impact of design options on the environmental targets, including dynamic multi-zone simulation study of each building thermal behaviour (heat gains and losses, thermal inertia, indoor comfort), natural lighting and shadow analysis, net energy demand, estimation of the embodied GHG emissions reduction and in-service water consumption and an estimated budget of construction and of running costs. This design shall illustrate the integration of all innovations and validate the viability of the building, its ideal orientation and the quantified impact of the innovations on the different targets. This design should be conducted by experts in the field of passive design and green buildings in order to assist in obtaining the certifications (see 5.4.1.7 Environmental Certification, p.5454) at later stages.

---

<sup>14</sup> e.g. Revit, Archicad, etc,

**Deliverable #3: Provide a schematic design. It shall include a report detailing the analysis of the expected behaviour of each building in its environment and the quantified indicators related to the different targets supported by 3D models (Electronic document in English, in editable format and pdf for the report and relevant format for the 3D model, to be submitted by email or USB/CD).**

§356 The Consultants shall not proceed beyond schematic design until provided with a written approval of the Contracting Authority which shall include all agreed upon revisions to the this phase design submittal.

#### 5.5.4 Preliminary design phase

§357 The consultants shall develop a preliminary design for each school based on the approved schematic design proposal. This phase includes further developing the BIM model and developing the aesthetics, construction materials and architectural functionality of the building and estimated budget. Several options shall be offered regarding the building materials and technologies with a cost/environmental benefit (energy/CO<sub>2</sub>/water) comparison. The consultant shall also carry out a geotechnical investigation of the site(s) by an accredited laboratory.

**Deliverable #4: Provide a preliminary design submittal that includes the following:**

**Volume I:** Updated deliverable #3 report detailing the analysis of the expected behaviour of the building in its environment and the quantified indicators related to the different targets.

**Volume II:** Drawings (architectural, structural, mechanical, and electrical) each set of discipline drawings should be separated from each other & Book of Details for the mentioned divisions.

**Volume III:** Bills of Quantities (excel sheet) of the priced BOQ according to template provided by the Contracting Authority.

The Consultants shall submit to the Contracting Authority one copy of each of the above-mentioned documents (electronic documents in relevant editable formats—.dwg, .xls and .doc—and in pdf format, to be submitted by email).

The Consultant shall submit a signed and stamped geotechnical investigation and findings report by the accredited laboratory..

§358 This preliminary design will be presented to MoE in order to give them some feedback on their proposals and collect further comments or advice from them.

§359 The Consultants shall not proceed beyond this phase until provided with a written approval of the Contracting Authority which shall include all agreed upon revisions to the this phase design submittal.

#### 5.5.5 Detailed design phase

§360 The Consultants shall prepare **detailed drawings** based on the accepted preliminary design submittal, including all agreed upon revisions according to the following numbers and submit them to the Contracting Authority for final review:

**Deliverable #5: Provide a detailed design submittal that includes the following:**

**Volume I:** Updated environmental impact assessment and simulations done at the preliminary design step, detailing environmental impact calculations: energy, GHG, water and waste, calculated for the entire life cycle of the building (construction, use and decommissioning)



**Volume II:** Drawings (architectural, structural, mechanical, and electrical) each set of discipline drawings should be separated from each other & Book of Details for the mentioned divisions.

The colour scheme and concept (professionally rendered 3D images)

**Volume III:** Bills of Quantities: (excel sheet) of the priced BOQ. Price analysis report according to the actual labour and materials cost.

**Volume IV:** General and Particular Specifications

**Volume V:** Proposed Construction Program for the project.

**Volume VI:** Booklet of the engineering calculations. The engineering calculation booklet shall at least include the following:

Chapter 1. Policy and method for structural design;

Chapter 2. Design of members;

Chapter 3. Mechanical design;

Chapter 4. Electrical design.

**Volume VII:** All documents and calculation necessary (PEB, PHPP) for the obtention of an energy performance certification (e.g. Belgian PEB or PassiveHouse) and from the Palestinian Higher Green Building Council To prepare any other document and calculation necessary for the obtention of an energy performance certification (e.g. Belgian PEB or Passive House) and from the Palestinian Higher Green Building Council.

§361 The Contracting Authority will review all the documents and inform the Consultant in writing, of any comment.

§362 The Consultants shall reflect all the agreed comments with the Contracting Authority on all tender documents, specially the drawings and the Bill of Quantities.

#### 5.5.6 Permits

§363 The Consultant shall prepare engineering drawings and other documents as it may be required for obtaining construction licenses or permits from related authorities and pay all fees required except licensing fees for municipalities, but including application fees, follow up and obtain the license on behalf of the Contracting Authority before submitting the Tender Documents. All related documents shall be approved and stamped by the Engineers Association and all other related ministries/ associations as The The Ministry of Tourism and Antiquities, Civil Defence, Center for Earth Sciences and Seismology, etc.

#### 5.5.7 Tender annexes documents

§364 After making all corrections and before the reproduction of the final tender documents (TD) to the Contracting Authority, the Consultants shall prepare and submit the corrected final detailed drawings, Bill of Quantities and other tender documents. These will also include updated cartouches on drawings refering to the lots and Enabel external reference number for the tender.

**Deliverable #6:** Finalized versions of deliverable #5, as annexes to the tender documents



## 5.6 Personnel specification

### 5.6.1 Personnel for item 1 - design services

§365 The following categories of personnel represent the required qualification for each category of personnel to be assigned for the design services by the Consultant as appropriate.

§366 Number of required personnel is specified under ( Key experts, p.92).

§367 Specific considerations as a team:

- Nominated Team Leader: this person will be nominated between the Integrated design sustainability coordinator or the Architect (cf. below). The Team Leader will represent the Consultant and will be responsible for managing the project. The Team Leader's responsibilities start at the moment of awarding the consulting services contract and continue up to issuing the final acceptance certificate.
- At least one person between the Integrated design sustainability coordinator and the Architect shall be local or have extensive experience in projects in Palestine.

§368 CVs must be submitted for the types of staff that the Consultant might decide to use on this project as follows:

- **Integrated design sustainability coordinator:** A full-time registered professional engineer<sup>15</sup>, holding a valid professional credential in green building principles<sup>16</sup> with more than sixteen (16) years of postgraduate experience in the design, management and supervision of construction projects, including certified green buildings, including passive buildings, low-energy buildings, the proven use of alternative ecological construction materials. Buildings may have been certified by LEED, BREEM, HQE, PEB, PMP, DGNB, Greenstar, Miljöbyggnad, CASBEE, IGBC, PHGBC or similar.
- **Architect:** A full-time registered professional architect with more than sixteen (16) years post graduate experience in the design of outstanding public buildings, including schools and child-friendly design, using a blend of local and international technologies. Experience in using alternative local eco-friendly materials is an asset.
- **Civil Structural engineer:** A registered professional civil structural engineer with more than twelve (12) years post graduate experience in design of similar assignment.
- **Electrical engineer:** A registered professional electrical engineer with more than twelve (12) years post graduate experience in BMS (i.e. Building Management System), smart buildings, solar system design.
- **Mechanical engineer:** A registered professional mechanical engineer with more than twelve (12) years post graduate experience. The qualified engineer shall have previous experience with passive design related to HVAC, the use of heat exchangers, in addition to water treatment and recycling modalities.
- **Quantity surveyor:** A professional engineer with more than seven (7) years of experience in developing bill of quantities, takeoff quantities, developing technical and general specifications, etc.

---

<sup>15</sup> Civil Engineer, Architect, Building Engineer, Electrical Engineer or Mechanical Engineer

<sup>16</sup> e.g. LEED AP, BREEM AP, Certified Passive House Designer, etc.

- **Draftsman:** A professional drafter in using latest version of professional architectural software, capable of rendering both 2D and 3D drawings and details with more than seven (7) years of post graduate experience.
- **Land Surveyor:** part time qualified and certified land surveyor with minimum 5 years experience. The surveyor shall have proven experience in performing site survey, land topographic surveys, contour survey, and all needed coordination with local regulatory bodies.

§369 All personnel should have access to West Bank for Lots 1 and 3 and Gaza for Lot 2. In case of joint venture with international consultants, Enabel may facilitate the obtention of access permits, if needed and coordinated well in advance. However, there is no guarantee the permits will be obtained.

§370 All the above listed full-time personnel shall be solely devoted for the project and the Contracting Authority can freely conduct inspection regarding their devotion.

§371 Experience in community engagement is needed as a team. In case none of the above-mentioned personnel own such experience, the service provider may propose other staff with experience in this field.

#### 5.6.2 Personnel for item 2 – works supervision and management services

§372 The following categories of personnel are to be assigned to the work by the Service provider in accordance with the conditions and qualifications set forth:

- **Project Manager:** same as Nominated Team Leader above (item 1).
- **Resident engineer:** Full time registered resident engineer with a university degree in civil engineering and more than twelve (12) years postgraduate experience in supervision of construction projects including an experience in green building and/or passive design in at least one similar project.
- **Site Engineer:** Full time registered civil/architectural engineer with a university degree and more than seven (7) years postgraduate experience in supervision of construction projects including an experience in at least one similar project.
- **Office Engineer:** Full time registered engineer with a university degree and more than two (2) years postgraduate experience in supporting construction projects in office management, taking meeting minutes, filing structuring, support review of shop drawings, etc.
- **Mechanical Engineer:** same as above (item 1). This engineer will make site visits whenever needed with a minimum of 10 visits per month (50% part time position). If more visits are needed then the engineer shall make these visits free of charge.
- **Electrical Engineer:** same as above (item 1). This engineer will make site visits whenever needed with a minimum of 10 visits per month (50% part time position). If more visits are needed then the engineer shall make these visits free of charge.

§373 All personnel should have access to West Bank for Lots 1 and 3 and Gaza for Lot 2. In case of joint venture with international consultants, Enabel may facilitate the obtention of access permits, if needed and coordinated well in advance. However, there is no guarantee the permits will be obtained.

§374 The engineers have to be available on site for full time during the working hours (from 8:00 am to 4:00 pm) per working days (from Saturday to Thursday).

§375 The Contracting Authority shall deduct an amount of 50 EURO for each non-justified absence day or part of a day from the payment due to service provider.

## 6 Forms

### 6.1 Form 1 - Identification form

Name of the company, organization or joint venture and legal form			
Nationality of the tenderer and of staff (if different)			
Domicile / registered office <b>complete</b> address	Street name (compulsory)		
	House number (compulsory)		
	Zip code or neighbourhood		
	City or village		
	Country or territory		
Telephone number (with country code)			
National Social Security Office registration number or equivalent			
Enterprise or organization registration number			
Represented by the undersigned	Full Name		
	Title		
Contact person	First and Last Name		
	Title / function		
	Phone		
	E-mail		
If different: Project manager for this contract	Full Name		
	Phone		
	E-mail		
Bank account for payments	IBAN		
	BIC/SWIFT		
	Financial institution		
	Account holder name		

Full Name:		Place:	
		Date:	
Duly authorised to sign this tender on behalf of:		Signature and stamp:	

## 6.2 Form 2 – Integrity statement for the tenderers

§376 Hereby, I/we, acting as legal representative(s) of above-mentioned tenderer, declare the following:

- Neither members of administration or employees, or any person or legal person with whom the tenderer has concluded an agreement in view of performing the public contract, may obtain or accept from a third party, for themselves or for any other person or legal person, an advantage appreciable in cash (for instance, gifts, bonuses or any other kind of benefits), directly or indirectly related to the activities of the person concerned for the account of Enabel.
- The board members, staff members or their partners have no financial or other interests in the businesses, organisations, etc. that have a direct or indirect link with Enabel (which could, for instance, bring about a conflict of interests).
- I have / we have read and understood the articles about deontology and anti-corruption included in the Tender Documents (see 1.7.), as well as *Enabel's Policy regarding sexual exploitation and abuse* of June 2019 and *Enabel's Policy regarding fraud and corruption risk management* of June 2019 and I / we declare fully endorsing and respecting these articles.

§377 If above-mentioned public contract is awarded to the tenderer, I/we declare, moreover, agreeing with the following provisions:

- In order to avoid any impression of risk of partiality or connivance in the follow-up and control of the performance of the public contract, it is strictly forbidden to the public contractor (i.e. members of the administration and workers) to offer, directly or indirectly, gifts, meals or any other material or immaterial advantage, of whatever value, to the employees of Enabel who are concerned, directly or indirectly, by the follow-up and/or control of the performance of the public contract, regardless of their hierarchical rank.
- Any (public) contract will be terminated, once it appears that contract awarding or contract performance would have involved the obtaining or the offering of the above-mentioned advantages appreciable in cash.
- Any failure to comply with one or more of the deontological clauses will be considered as a serious professional misconduct which will lead to the exclusion of the contractor from this and other public contracts for Enabel.
- The public contractor commits to supply, upon the demand of the contracting authority, any supporting documents related to the performance conditions of the contract. The contracting authority will be allowed to proceed to any control, on paperwork or on site, which it considers necessary to collect evidence to support the presumption of unusual commercial expenditure.
- Finally, the tenderer takes cognisance of the fact that Enabel reserves the right to lodge a complaint with the competent legal instances for all facts going against this statement and that all administrative and other costs resulting are borne by the tenderer.

Full name:		Place:	
		Date:	
Duly authorised to sign this tender on behalf of:		Signature and stamp:	

### 6.3 Form 3 - Declaration on honour – exclusion criteria

§378 Hereby, I / we, acting as legal representative(s) of above-mentioned tenderer, declare that the tenderer does not find himself in one of the following situations:

- 1) The tenderer or one of its 'directors'<sup>[1]</sup> was found guilty following a conviction by final judgement for one of the following offences:
  - 1° involvement in a criminal organisation
  - 2° corruption
  - 3° fraud
  - 4° terrorist offences, offences linked related to terrorist activities or incitement to commit such offence, collusion or attempt to commit such an offence
  - 5° money laundering or terrorist financing
  - 6° child labour and other trafficking in human beings
  - 7° employment of foreign citizens under illegal status
  - 8° creating a shell company.
- 2) The counterparty which fails to fulfil his obligations relating to the payment of taxes or social security contributions for an amount in excess of EUR 3 000, except if the counterparty can demonstrate that a contracting authority owes him one or more unquestionable and due debts which are free of all foreseeable liabilities. These debts are at least of an amount equal to the one for which he is late in paying outstanding tax or social charges.
- 3) The counterparty who is in a state of bankruptcy, liquidation, cessation of activities, judicial reorganisation or has admitted bankruptcy or is the subject of a liquidation procedure or judicial reorganisation, or in any similar situation resulting from a procedure of the same kind existing under other national regulations;
- 4) When Enabel can demonstrate by any appropriate means that the counterparty or any of its directors has committed serious professional misconduct which calls into question his integrity.

Are also considered such serious professional misconduct:

- 1° A breach of Enabel's Policy regarding sexual exploitation and abuse – June 2019
- 2° A breach of Enabel's Policy regarding fraud and corruption risk management – June 2019
- 3° A breach of a regulatory provision in applicable local legislation regarding sexual harassment in the workplace
- 4° The counterparty was seriously guilty of misrepresentation or false documents when providing the information required for verification of the absence of grounds for exclusion or the satisfaction of the selection criteria, or concealed this information
- 5° Where Enabel has sufficient plausible evidence to conclude that the counterparty has committed acts, entered into agreements or entered into arrangements to distort competition

The presence of this counterparty on one of Enabel's exclusion lists as a result of such an act/agreement/arrangement is considered to be sufficiently plausible an element.

- 5) When a conflict of interest cannot be remedied by other, less intrusive measures;
- 6) When significant or persistent failures by the counterparty were detected during the execution of an essential obligation incumbent on him in the framework of a previous

contract, a previous contract placed with another contracting authority, when these failures have given rise to measures as of right, damages or another comparable sanction. Also failures to respect applicable obligations regarding environmental, social and labour rights, national law, labour agreements or international provisions on environmental, social and labour rights are considered 'significant'.

The presence of the counterparty on the exclusion list of Enabel because of such a failure serves as evidence.

- 7) Restrictive measures have been taken vis-à-vis the counterparty with a view of ending violations of international peace and security such as terrorism, human-rights violations, the destabilisation of sovereign states and de proliferation of weapons of mass destruction.

The counterparty or one of its directors are on the lists of persons, groups or entities submitted by the United Nations, the European Union and Belgium for financial sanctions:

For the United Nations, the lists can be consulted at the following address:

<https://finances.belgium.be/fr/tresorerie/sanctions-financieres/sanctions-internationales-nations-unies>

For the European Union, the lists can be consulted at the following address:

<https://finances.belgium.be/fr/tresorerie/sanctions-financieres/sanctions-europ%C3%A9ennes-ue>

[https://eeas.europa.eu/headquarters/headquarters-homepage/8442/consolidated-list-sanctions\\_en](https://eeas.europa.eu/headquarters/headquarters-homepage/8442/consolidated-list-sanctions_en)

[https://eeas.europa.eu/sites/eeas/files/restrictive\\_measures-2017-01-17-clean.pdf](https://eeas.europa.eu/sites/eeas/files/restrictive_measures-2017-01-17-clean.pdf)

For Belgium:

[https://finances.belgium.be/fr/sur\\_le\\_spf/structure\\_et\\_services/administrations\\_generales/tr%C3%A9sorerie/contr%C3%B4le-des-instruments-1-2](https://finances.belgium.be/fr/sur_le_spf/structure_et_services/administrations_generales/tr%C3%A9sorerie/contr%C3%B4le-des-instruments-1-2)

Full name:		Place:	
		Date:	
Duly authorised to sign this tender on behalf of:		Signature and stamp:	



## 6.4 Attachment 1 - Power of attorney

§379 The tenderer shall include in his tender the power of attorney empowering the person signing the tender on behalf of the company, joint venture or consortium.

§380 In case of a **consortium** or a **temporary association**, the joint tender must specify the role of each member of the tendering party. A group leader must be designated and the power of attorney must be completed accordingly.

► Please insert after this page the power of attorney empowering the person signing the tender on behalf of the company, joint venture or consortium, signed by the person(s) mentioned in the incorporation certificate (only needed if the person signing the tender is different).

## 6.5 Attachment 2 - Incorporation certificate

§381 The tenderer shall include in his tender the incorporation certificate<sup>17</sup> from the competent authority (for local tenderers: Israeli or Palestinian Registration Certificate).

► Please insert after this page

---

<sup>17</sup> In case of a consortium or a temporary association, the certificate must be submitted for all members of the tendering party.

## **6.6 Attachment 3 - Certification of clearance with regards to the payments of social security contributions**

§382 The tenderer must provide a certification<sup>17</sup> from the competent authority stating that (s)he is in order with its obligations with regards to the payments of social security contributions that apply by law in the country of establishment. This requirement does not apply to tenderers registered in the Palestinian territory and Israel.

► Please insert after this page

## 6.7 Attachment 4 - Certification of clearance with regards to the payments of applicable taxes

§383 The tenderer must provide a **recent certification**<sup>17</sup> (up to 1 year) from the competent authority stating that the tenderer is **in order with the payment of applicable taxes** that apply by law in the country of establishment. For firms registered in Israel or the Palestinian territory, a valid deduction at source certificate must be provided.

► Please insert after this page

## **6.8 Attachment 5 - Declaration from a competent authority of not being in a situation of bankruptcy or insolvency**

► Please insert after this page

## 6.9 Form 4 - List of the main similar services

§384 In order to be selected for **each of the lots** of this contract, the tenderer must have **at least three relevant contracts carried out in the past five years** to the highest standard and to the client's full satisfaction, for a minimum combined value (sum of the values of the consultancy contracts, not the value of the works) of **100,000 €** with a minimum value for each contract of **20,000 €**.

For participating in:	Minimum combined value of accepted contracts (€):	Each with a minimum amount of (€):	Minimum number of design assignment ( <i>Public building</i> )	Minimum number of design assignment ( <i>Green building</i> )
Lot 1 only – One school in Hebron	100,000.00	20,000.00	2	1
Lot 2 only – Two schools in Gaza	100,000.00	20,000.00	2	1
Lot 3 only – One school in Al-Ezariyeh	100,000.00	20,000.00	2	1

§385 **In the case of a response to several lots, the minimum value of combined contracts amount are accumulated. The tenderer must therefore present the number of references required cumulatively for the different lots for which (s)he is submitting a tender.**

§386 The tenderer must provide in his/her offer the list of the **main similar consultancy services (min. 3) in the last five years**, including the amount involved and the relevant dates, and the public or private bodies on behalf of which they were carried out (contracting authority), showing that the tenderer has experience in performing those services.



### 6.9.1 Experience 1

1	Project Name		Contracting authority	Name		
	Description			Contact		
					Email	
Values	Amount	Currency	Dates		Start	End
of consultancy contract (compulsory)			Design phase			
of construction works			Construction			
Location	City / country		GPS or Map hyperlink			
Website hyperlink						
<b>Environmental features description (if applicable)</b>						
Energy efficiency rating		Kwh/m2/y	Other innovations / features			
Water efficiency						
Alternative materials						
Pollution mitigation			Type of environmental certification obtained			

### 6.9.2 Experience 2

2	Project Name		Contracting authority	Name		
	Description			Contact		
				Email		
Values	Amount	Currency	Dates	Start	End	
of consultancy contract (compulsory)			Design phase			
of construction works			Construction			
Location	City / country		GPS or Map hyperlink			
Website hyperlink						
<b>Environmental features description (if applicable)</b>						
Energy efficiency rating		Kwh/m2/y	Other innovations / features			
Water efficiency						
Alternative materials						
Pollution mitigation			Type of environmental certification obtained			

### 6.9.3 Experience 3

3	Project Name		Contracting authority	Name		
	Description			Contact		
				Email		
Values	Amount	Currency	Dates	Start	End	
of consultancy contract (compulsory)			Design phase			
of construction works			Construction			
Location	City / country		GPS or Map hyperlink			
Website hyperlink						
<b>Environmental features description (if applicable)</b>						
Energy efficiency rating		Kwh/m2/y	Other innovations / features			
Water efficiency						
Alternative materials						
Pollution mitigation			Type of environmental certification obtained			

#### 6.9.4 Experience 4

4	Project Name			Contracting authority	Name		
	Description				Contact		
					Email		
Values	Amount	Currency	Dates	Start	End		
of consultancy contract (compulsory)			Design phase				
of construction works			Construction				
Location	City / country		GPS or Map hyperlink				
Website hyperlink							
<b>Environmental features description (if applicable)</b>							
Energy efficiency rating		Kwh/m2/y	Other innovations / features				
Water efficiency							
Alternative materials							
Pollution mitigation			Type of environmental certification obtained				

### 6.9.5 Experience 5

5	Project Name		Contracting authority	Name		
	Description			Contact		
				Email		
Values	Amount	Currency	Dates	Start	End	
of consultancy contract (compulsory)			Design phase			
of construction works			Construction			
Location	City / country		GPS or Map hyperlink			
Website hyperlink						
<b>Environmental features description (if applicable)</b>						
Energy efficiency rating		Kwh/m2/y	Other innovations / features			
Water efficiency						
Alternative materials						
Pollution mitigation			Type of environmental certification obtained			

### 6.9.6 Experience 6

6	Project Name		Contracting authority	Name		
	Description			Contact		
				Email		
Values	Amount	Currency	Dates	Start	End	
of consultancy contract (compulsory)			Design phase			
of construction works			Construction			
Location	City / country		GPS or Map hyperlink			
Website hyperlink						
<b>Environmental features description (if applicable)</b>						
Energy efficiency rating		Kwh/m2/y	Other innovations / features			
Water efficiency						
Alternative materials						
Pollution mitigation			Type of environmental certification obtained			

### 6.9.7 Experience 7

7	Project Name		Contracting authority	Name		
	Description			Contact		
				Email		
Values	Amount	Currency	Dates	Start	End	
of consultancy contract (compulsory)			Design phase			
of construction works			Construction			
Location	City / country		GPS or Map hyperlink			
Website hyperlink						
<b>Environmental features description (if applicable)</b>						
Energy efficiency rating		Kwh/m2/y	Other innovations / features			
Water efficiency						
Alternative materials						
Pollution mitigation			Type of environmental certification obtained			



### 6.9.8 Experience 8

8	Project Name		Contracting authority	Name		
	Description			Contact		
				Email		
Values	Amount	Currency	Dates	Start	End	
of consultancy contract (compulsory)			Design phase			
of construction works			Construction			
Location	City / country		GPS or Map hyperlink			
Website hyperlink						
<b>Environmental features description (if applicable)</b>						
Energy efficiency rating		Kwh/m2/y	Other innovations / features			
Water efficiency						
Alternative materials						
Pollution mitigation			Type of environmental certification obtained			

### 6.9.9 Experience 9

9	Project Name		Contracting authority	Name		
	Description			Contact		
				Email		
Values	Amount	Currency	Dates	Start	End	
of consultancy contract (compulsory)			Design phase			
of construction works			Construction			
Location	City / country		GPS or Map hyperlink			
Website hyperlink						
<b>Environmental features description (if applicable)</b>						
Energy efficiency rating		Kwh/m2/y	Other innovations / features			
Water efficiency						
Alternative materials						
Pollution mitigation			Type of environmental certification obtained			

### 6.9.10 Experience 10

10	Project Name		Contracting authority	Name		
	Description			Contact		
				Email		
Values	Amount	Currency	Dates	Start	End	
of consultancy contract (compulsory)			Design phase			
of construction works			Construction			
Location	City / country		GPS or Map hyperlink			
Website hyperlink						
<b>Environmental features description (if applicable)</b>						
Energy efficiency rating		Kwh/m2/y	Other innovations / features			
Water efficiency						
Alternative materials						
Pollution mitigation			Type of environmental certification obtained			

## 6.10 Attachment 6 - Certificates of completion

- §387 For each of the projects listed, the tenderer must provide in his/her offer the certificates of completion (statement or certificate without major reservation) and / or any supporting documents (contracts, invoices...) approved by the entity which awarded the contract, proving the date of completion, name of public or private bodies for which the consultancy was performed and the amount involved for the consultancy.
- §388 For relevant projects, the service provider must also submit supporting documents allowing the appreciation of the relevance and level of innovation, including pictures, drawings/sketches.
- §389 Hyperlinks to **public** webpages presenting the projects are welcome.
- §390 Links to **restricted** online locations, such as files on cloud space storage, are not admitted, and should be submitted in the envelope, printed and on the support for electronic document.

► Please insert after this page

## 6.11 Form 5A – prices – Lot 1 (One school in Hebron)

**Do NOT change the “Financial offer & tender form”. Reservations are not permitted.**

By submitting this tender, the tenderer explicitly declares accepting all conditions mentioned in the tender documents and renounces to his own (sales) conditions. (S)he commits to executing this public contract for the following lump-sum prices, in EUR and exclusive of VAT (written in figures).

### Lot n°1 – Item 1: Design services (fixed block)

No.	Site	Location	Price in Euro	
1.	Bakri School	Hebron		€
<b>TOTAL FOR ITEM 1 [EURO]</b>				€

### Lot n°1 – Item 2: Works Supervision and Management services (conditional block)

No.	Site	Location	Estimated Quantity [Months]	Unit price [€] (Monthly rate per site)	Price in Euro	
1.	Bakri School	Hebron	18			€
<b>TOTAL FOR ITEM 2 [EURO]</b>						€

Duration of supervision is estimated and will be fixed after finalizing the design.

**ALL PRICES NOT INCLUDING V.A.T.**

<b>TOTAL FOR LOT 1 (ITEM 1 + ITEM 2) [EURO]</b>		€
---	--	---

\*International travel days are not reimbursed by Enabel. In case the contract is extended, the prices mentioned in the contract apply.

Cf. points 3.4.3 Determination of prices, p.17, 3.4.3.1 Elements included in the price, p.17 and 4.15.2 Invoicing and payment of services (Art. 66 to 72 – 160), p.34

This contract is subject to applicable withholding tax. For national service providers registered in the Palestinian Territory, Consulting Offices are exempted from V.A.T. while for Individual Consultants, 5% will be deducted at payment unless they provide a deduction at source certificate. For national service providers registered in Israel, Consulting Offices will charge V.A.T. on top of the above-mentioned prices. For Individual Consultants registered in Israel, 30% will be deducted at payment unless they provide a deduction at source certificate. For international consultants, Belgium legislation will apply.

<b>Full name</b>		<b>Place:</b>	
		<b>Date:</b>	
<b>Duly authorised to sign this tender on behalf of:</b>		<b>Signature and stamp:</b>	

## 6.12 Form 5B – prices – Lot 2 – (Two schools in Gaza)

**Do NOT change the “Financial offer & tender form”. Reservations are not permitted.**

By submitting this tender, the tenderer explicitly declares accepting all conditions mentioned in the tender documents and renounces to his own (sales) conditions. (S)he commits to executing this public contract for the following lump-sum prices, in EUR and exclusive of VAT (written in figures).

### Lot n°1 – Item 1: Design services (fixed block)

No.	Site	Location	Price in Euro	
1.	Gaza Basic School	Gaza		€
2.	Gaza Secondary School	Gaza		
<b>TOTAL FOR ITEM 1 [EURO]</b>				€

### Lot n°1 – Item 2: Works Supervision and Management services (conditional block)

No.	Site	Location	Estimated Quantity [Months]	Unit price [€] (Monthly rate per site)	Price in Euro	
1.	Gaza Basic School	Gaza	14			€
2.	Gaza Secondary School	Gaza	14			
<b>TOTAL FOR ITEM 2 [EURO]</b>						€

Duration of supervision is estimated and will be fixed after finalizing the design.

**ALL PRICES NOT INCLUDING V.A.T.**

<b>TOTAL FOR LOT 1 (ITEM 1 + ITEM 2) [EURO]</b>		€
---	--	---

\*International travel days are not reimbursed by Enabel. In case the contract is extended, the prices mentioned in the contract apply.

Cf. points 3.4.3 Determination of prices, p.17, 3.4.3.1 Elements included in the price, p.17 and 4.15.2 Invoicing and payment of services (Art. 66 to 72 – 160), p.34

This contract is subject to applicable withholding tax. For national service providers registered in the Palestinian Territory, Consulting Offices are exempted from V.A.T. while for Individual Consultants, 5% will be deducted at payment unless they provide a deduction at source certificate. For national service providers registered in Israel, Consulting Offices will charge V.A.T. on top of the above-mentioned prices. For Individual Consultants registered in Israel, 30% will be deducted at payment unless they provide a deduction at source certificate. For international consultants, Belgium legislation will apply.

<b>Full name</b>		<b>Place:</b>	
		<b>Date:</b>	
<b>Duly authorised to sign this tender on behalf of:</b>		<b>Signature and stamp:</b>	

### 6.13 Form 5C – prices – Lot 3 – (One school in Al-Ezariyeh)

**1 Do NOT change the “Financial offer & tender form”. Reservations are not permitted.**

By submitting this tender, the tenderer explicitly declares accepting all conditions mentioned in the tender documents and renounces to his own (sales) conditions. (S)he commits to executing this public contract for the following lump-sum prices, in EUR and exclusive of VAT (written in figures).

#### Lot n°1 – Item 1: Design services (fixed block)

No.	Site	Location	Price in Euro	
1.	Riad Al-Aqsa School	Al-Ezariyeh		€
<b>TOTAL FOR ITEM 1 [EURO]</b>				€

#### Lot n°1 – Item 2: Works Supervision and Management services (conditional block)

No.	Site	Location	Estimated Quantity [Months]	Unit price [€] (Monthly rate per site)	Price in Euro	
1.	Riad Al-Aqsa School	Al-Ezariyeh	18			€
<b>TOTAL FOR ITEM 2 [EURO]</b>						€

Duration of supervision is estimated and will be fixed after finalizing the design.

**ALL PRICES NOT INCLUDING V.A.T.**

**TOTAL FOR LOT 1 (ITEM 1 + ITEM 2) [EURO]**

€

\*International travel days are not reimbursed by Enabel. In case the contract is extended, the prices mentioned in the contract apply.

Cf. points 3.4.3 Determination of prices, p.17, 3.4.3.1 Elements included in the price, p.17 and 4.15.2 Invoicing and payment of services (Art. 66 to 72 – 160), p.34

This contract is subject to applicable withholding tax. For national service providers registered in the Palestinian Territory, Consulting Offices are exempted from V.A.T. while for Individual Consultants, 5% will be deducted at payment unless they provide a deduction at source certificate. For national service providers registered in Israel, Consulting Offices will charge V.A.T. on top of the above-mentioned prices. For Individual Consultants registered in Israel, 30% will be deducted at payment unless they provide a deduction at source certificate. For international consultants, Belgium legislation will apply.

Full name		Place:	
		Date:	
Duly authorised to sign this tender on behalf of:		Signature and stamp:	



6.14 Form 6 - Awarding Preferences

§391 The tenderer who wishes to submit a tender for several lots but be awarded a lesser amount of lots specifies here below the number of lots they wishes to be awarded and their order of preference in case they wins more lots than can be awarded according to their capacity.

The tenderer wishes to be awarded  (number of) lots

and his order of preference is:

Most preferable		Least preferable

Certified true and sincere,

Full name		Place:	
		Date:	
Duly authorised to sign this tender on behalf of:		Signature and stamp:	

## 6.15 Attachment 7 - Methodology

§392 The tenderers presents a methodology based on the Terms of reference (p.38), specifying how they propose to reach the Objective of the consultancy (p.40) and achieve the requested Design standards and specifications (p.494949) within the timeframe set in Deadlines and terms (Art. 147) (p.3058), and obtain the requested 5.4.1.7 Environmental Certification (p.5454).

§393 As part of the methodology, the tenderer will present:

- 1° A **work plan (Form 7)**, defining the timing of the different steps and phases set in Performance modalities and deliverables (p.5858), by distributing the total time allocated for the production of deliverables as set in 4.11.1 Deadlines and terms (Art. 147) - Item 1: Design services (fixed block), p.3030. The review periods by the Contracting authority are indicative. The work plan shall also set the weekly closure day of the service provider.
- 2° A description of how the **key personnel** will be involved in the consultancy, what will be each team member responsibility and how it will interact together. In case international staff is involved, or in case staff based in the West Bank is planned to collaborate on Gaza schools or *vice versa*, an explanation if **missions** are planned or not and if yes, how many and at what stage they would take place.
- 3° A **general proposed architectural concept and technological strategy** on how the different targets specified in the Design standards and specifications (p.4949) could be reached. Using text, sketches, drawings, pictures and references of other projects (not necessarily their own), tenderers shall propose concrete, explicit and realistic technological choices in the field of:
  - a. Energy, ventilation, heating and cooling, which will lead to reach the targets of Energy efficiency (p.494949), Indoor air quality (p.5555) and Comfort (p.5656), contribute to the GHG emissions reduction target (p.5050) and lead to the certification of the buildings with the Passive Standard (see Environmental Certification, p.5454), while respecting Economic sustainability criteria (p.5656) such as the Replicability of innovations (p.56) and Low cost and easy maintenance (p.57).
  - b. Structure and construction materials, leading to the targets of Raw material consumption (p.5252) and Local materials (p.5353) and contributing to the GHG emissions reduction target (p.5050).
  - c. Water management, leading to the targets of Water recycling and efficiency (p.5151) and Local pollution (p.5353).
- 4° **Lessons learned** in execution of similar services in green schools and/or in the region and how these would be considered during the design and supervision phases.

**Please note that the methodology should not exceed 20 pages. Do not repeat/copy the ToRs.**

§394 For more information regarding the sub-criteria which will be used to evaluate the methodology, and how it will participate in the general evaluation of the tenders, see: Award criterion 1: Methodology: %, p.22.22

## 6.16 Form 7 - Workplan

#	Step / sub-phase	Start (triggered by)	End (output)	Responsible	Duration (working days)
1	Sub-phase 1: Reconnaissance and Program Analysis Phase	Commencement order #1	Deliverable #1	Service provider	
2	Review of preliminary design	Submission of deliverable #1	Commencement order #2	Contracting Authority	30 <sup>18</sup>
3	Sub-phase 2: Conceptual phase	Commencement order #2	Deliverable #2	Service provider	
4	Review of detailed design	Submission of deliverable #2	Commencement order #3	Contracting Authority	30 <sup>19</sup>
5	Sub-phase 3: Schematic design phase	Commencement order #3	Deliverable #3	Service provider	
6	Review of schematic design	Submission of deliverable #3	Commencement order #4	Contracting Authority	30 <sup>20</sup>
7	Sub-phase 4: Preliminary design phase	Commencement order #4	Deliverable #4	Service provider	
8	Review of preliminary design	Submission of deliverable #4	Commencement order #5	Contracting Authority	30 <sup>21</sup>
9	Sub-phase 5: Detailed design phase	Commencement order #5	Deliverable #5	Service provider	
10	Review of detailed design	Submission of deliverable #5	Commencement order #6	Contracting Authority	30 <sup>22</sup>
11	Sub-phase 6: Finalize Detailed design	Commencement order #6	Deliverable #6	Contracting Authority	
<b>Total no. of days of design (excluding review periods) – should be max. 120</b> <b>Please read</b> <u>Performance modalities and deliverables (p.3058) and Deadlines and terms (Art. 147), p.30.</u>					
The weekly day of closure is:					

► Please insert the methodology after this page

<sup>18</sup> Review periods are estimated.

<sup>19</sup> Review periods are estimated.

<sup>20</sup> Review periods are estimated.

<sup>21</sup> Review periods are estimated.

<sup>22</sup> Review periods are estimated.

## 6.17 Form 8 - Key experts

§395 For each lot, the tenderer must complete the **tables on next pages**. For description of the needed qualifications, see: 5.6 Personnel specification, p. 6262. For a description of how the personnel will be scored and used as part of the award criteria, see: Award criterion 2: Qualification and experience of key experts proposed: 40 %, p.22.

§396 Due to the strict timing required for the project the three lots of the tender will be carried out simultaneously (in parallel). For this reason, the tenderer who wishes to be awarded more than one lot must multiply the staff according to the table below:

# of staff (full-time equivalent)					
	Participation in Lot 1	Participation in Lot 2	Participation in Lot 3	Participation in Lots 1 + 3	Participation in all Lots
<b>Item 1 - Design Services</b>					
Integrated design sustainability coordinator	1	1	1	1	2
Architect	1	1	1	1	2
Civil Structural Engineer	1	1	1	1	2
Electrical Engineer	1	1	1	1	2
Mechanical Engineer	1	1	1	1	2
Quantity Surveyor	1	1	1	1	2
Draftsman	1	1	1	1	2
Land Surveyor	1	1	1	1	2
<b>Item 2 – Works Supervision and Management Services</b>					
Project Manager	1	1	1	1	2
Resident Engineer	1	1	1	2	3
Site Engineer	2	2	2	4	6
Office Engineer	1	1	1	2	3
Electrical Engineer	0.5	0.5	0.5	1	1 for Lots 1+3 and 0.5 for Lot 2
Mechanical Engineer	0.5	0.5	0.5	1	1 for Lots 1+3 and 0.5 for Lot 2

Numbers indicated represent the full-time equivalent (FTE) of one person. (0.5 means 1 person part-time 50%, etc.)

§397 The Service provider can (but doesn't have to) propose the same positions of the design phase for the supervision phase for the following positions which are similar in nature and requirements (Team Leader can become the Project Manager, Civil Structural Engineer can become the Resident Engineer, as well as, for the positions of Electrical and Mechanical Engineers). However, subject that they meet the experience required in both design and supervision).

§398 **The tenderer who wishes to submit a tender for several lots but be awarded a lesser amount of lots may submit several times the same key experts and CVs according to the number of lots (s)he wishes to be awarded.**

For submission of Lot 1 only, please complete the tables below:

**6.17.1 Lot n°1 – Item 1 – Design services**

Position		Name of proposed expert	Years of relevant experience	Educational degree and certificates	Specialist areas of knowledge	Team Leader? (select)	Checklist: CV joined to the tender?
Integrated design sustainability coordinator							
Architect							
Civil Structural engineer							
Electrical engineer							
Mechanical engineer							
Quantity Surveyor							
Draftsman							
Land Surveyor							
Other (specify)							

### 6.17.2 Lot n°1 – Item 2 – Works supervision and management services

Position		Name of proposed expert	Years of relevant experience	Educational degree	Specialist areas of knowledge	Checklist: CV joined to the tender?
Project Manager						
Resident Engineer						
Site Engineer (Position 1)						
Site Engineer (Position 2)						
Office Engineer						
Electrical engineer						
Mechanical engineer						
Other (specify)						



For submission of Lot 2 only, please complete the tables below:

**6.17.3 Lot n°2 – Item 1 – Design services**

Position		Name of proposed expert	Years of relevant experience	Educational degree and certificates	Specialist areas of knowledge	Team Leader? (select)	Checklist: CV joined to the tender?
Integrated design sustainability coordinator							
Architect							
Civil Structural engineer							
Electrical engineer							
Mechanical engineer							
Quantity Surveyor							
Draftsman							
Land Surveyor							
Other (specify)							

#### 6.17.4 Lot n°2 – Item 2 – Works supervision and management services

Position		Name of proposed expert	Years of relevant experience	Educational degree	Specialist areas of knowledge	Checklist: CV joined to the tender?
Project Manager						
Resident Engineer						
Site Engineer (Position 1)						
Site Engineer (Position 2)						
Office Engineer						
Electrical engineer						
Mechanical engineer						
Other (specify)						

For submission of Lot 3 only, please complete the tables below:

**6.17.5 Lot n°3 – Item 1 – Design Services**

Position		Name of proposed expert	Years of relevant experience	Educational degree and certificates	Specialist areas of knowledge	Team Leader? (select)	Checklist: CV joined to the tender?
Integrated design sustainability coordinator							
Architect							
Civil Structural engineer							
Electrical engineer							
Mechanical engineer							
Quantity Surveyor							
Draftsman							
Land Surveyor							
Other (specify)							

#### 6.17.6 Lot n°3 – Item 2 – Works supervision and management services

Position		Name of proposed expert	Years of relevant experience	Educational degree	Specialist areas of knowledge	Checklist: CV joined to the tender?
Project Manager						
Resident Engineer						
Site Engineer (Position 1)						
Site Engineer (Position 2)						
Office Engineer						
Electrical engineer						
Mechanical engineer						
Other (specify)						

For submission of lots 1 + 3, please complete the tables below:

**6.17.7 Both lots 1+3 – Item 1 – Design services**

Position		Name of proposed expert	Years of relevant experience	Educational degree and certificates	Specialist areas of knowledge	Team Leader? (select)	Checklist: CV joined to the tender?
Integrated design sustainability coordinator							
Architect							
Civil Structural engineer							
Electrical engineer							
Mechanical engineer							
Quantity Surveyor							
Draftsman							
Land Surveyor							
Other (specify)							

### 6.17.8 Both lots 1+3 – Item 2 – Works supervision and management services

Position		Name of proposed expert	Years of relevant experience	Educational degree	Specialist areas of knowledge	Checklist: CV joined to the tender?
Project Manager						
Resident Engineer (Lot 1)						
Resident Engineer (Lot 3)						
Site Engineer (Lot 1)						
Site Engineer (Lot 1)						
Site Engineer (Lot 3)						
Site Engineer (Lot 3)						
Office Engineer (Lot 1)						
Office Engineer (Lot 3)						
Electrical engineer						
Mechanical engineer						
Other (specify)						

For submission of all lots, please complete the tables below:

#### 6.17.9 All lots – Item 1 – Design services

Position	Name of proposed expert	Years of relevant experience	Educational degree and certificates	Specialist areas of knowledge	Team Leader? (select)		Checklist: CV joined to the tender?
					Lots 1+3	Lot 2	
Integrated design sustainability coordinator (Lot 1+3)							
Integrated design sustainability coordinator (Lot 2)							
Architect (Lots 1+3)							
Architect (Lot 2)							
Civil Structural Eng. (Lots 1+3)							
Civil Structural Eng. (Lot 2)							
Electrical Eng. (Lots 1+3)							
Electrical Eng. (Lot 2)							
Mechanical Eng. (Lots 1+3)							
Mechanical Eng. (Lot 2)							
Quantity Surveyor (Lots 1+3)							



Position	Name of proposed expert	Years of relevant experience	Educational degree and certificates	Specialist areas of knowledge	Team Leader? (select)		Checklist: CV joined to the tender?
					Lots 1+3	Lot 2	
Quantity Surveyor (Lot 2)							
Draftsman (Lots 1+3)							
Draftsman (Lot 2)							
Land Surveyor (Lots 1+3)							
Land Surveyor (Lot 2)							
Other (specify)							

#### 6.17.10 All lots – Item 2 – Works supervision and management services

Position	Name of proposed expert	Years of relevant experience	Educational degree	Specialist areas of knowledge	Checklist: CV joined to the tender?
Project Manager (Lots 1+3)					
Project Manager (Lot 2)					
Resident Eng. (Lot 1)					
Resident Eng. (Lot 2)					
Resident Eng. (Lot 3)					
Site Engineer (Lot 1)					
Site Engineer (Lot 1)					

Position		Name of proposed expert	Years of relevant experience	Educational degree	Specialist areas of knowledge	Checklist: CV joined to the tender?
Site Engineer (Lot 2)						
Site Engineer (Lot 2)						
Site Engineer (Lot 3)						
Site Engineer (Lot 3)						
Office Engineer (Lot 1)						
Office Engineer (Lot 2)						
Office Engineer (Lot 3)						
Electrical Eng. (Lots 1+3)						
Electrical Eng. (Lot 2)						
Mechanical Eng. (Lots 1+3)						
Mechanical Eng. (Lot 2)						
Other (specify)						

## 6.18 Attachment 8 - CVs of all mentioned personnel

§399 The service provider must provide in his/her offer the updated **CVs of the key experts proposed** for implementing this services contract. The CV's (qualifications and experience of key experts) have to fulfil the profiles as requested in the ToRs (see: 5.6 Personnel specification, p.62). Each CV should be no longer than 5 pages.

§400 For the Integrated design sustainability coordinator, valid credentials in green architecture shall be annexed (e.g. LEED AP, BREEAM AP, Certified Passive House Designer, etc.).

► Please insert after this page CVs of all mentioned personnel  
Please respect the order of the personnel as listed in the form

## 6.19 Form 9 - Subcontractors

Name and legal form	Address / Registered office	Object

Full name:		Place:	
		Date:	
Duly authorised to sign this tender on behalf of:		Signature and stamp:	

## 6.20 Form 10 – Checklist

§401 Please refer to Data to be included in the tender, p.16 for complete instructions on how to fill the forms of the present tender document. The following documents need to be provided as part of the tender:

#	Forms	Filled ?	Attachments	Joined ?
6.1	<u>Form 1 - Identification form, p.65</u>			
6.2	<u>Form 2 – Integrity statement for the tenderers, p.66</u>			
6.3	<u>Form 3 - Declaration on honour – exclusion criteria, p.67</u>			
6.4			<u>Attachment 1 - Power of attorney, p.69</u>	
6.5			<u>Attachment 2 - Incorporation certificate, p.70</u>	
6.6			<u>Attachment 3 - Certification of clearance with regards to the payments of social security contributions, p.71</u>	
6.7			<u>Attachment 4 - Certification of clearance with regards to the payments of applicable taxes, p.72</u>	
6.8			<u>Attachment 5 - Declaration from a competent authority of not being in a situation of bankruptcy or insolvency, p.73</u>	
6.9	<u>Form 4 - List of the main similar services, p.74</u>			
6.10			<u>Attachment 6 - Certificates of completion, p.85</u>	
6.11	<u>Form 5C – prices – Lot 3 – (One school in Al-Ezariyeh), p. 86</u>			
6.12	<u>Form 5B – prices – Lot 2 – (Two schools in Gaza), p.87</u>			
6.13	<u>Form 5C – prices – Lot 3 – (One school in Al-Ezariyeh), p. 88</u>			
6.14	<u>Form 6 - Awarding Preferences, p.89</u>			
6.15			<u>Attachment 7 - Methodology, p.90</u>	
6.16	<u>Form 7 - Workplan, p.91</u>			
6.17	<u>Form 8 - Key experts, p.92</u>			
6.18			<u>Attachment 8 - CVs of all mentioned personnel, p.105</u>	
6.19	<u>Form 9 - Subcontractors, p.106</u>			
6.20	<u>Form 10 – Checklist, p.107</u>			