

SYMBOL	DESCRIPTION
	28W LED 600x600mm light (Type F4)
	18W 3000K Architectural LED Pendant to IP40 (Type D)
	Surface 14W LED downlight to IP54 (Type P)
	Surface 14W LED downlight to IP40 (Type C)
	10W Security bulkhead to IP65 (Type S)
	Exit light (Type EXIT)
	Intermediate switch.
	1 Gang 2way switch.
	2 Gang 2way switch.
	3 Gang 2way switch.
	1 Gang 1way switch.
	2 Gang 1way switch.

SWITCHED-SOCKET-OUTLETS AND SOCKET OUTLETS IN OFFICES AND CORRIDORS SHALL, UNLESS OTHERWISE SPECIFIED, BE FIXED 300MM ABOVE FINISHED FLOOR LEVEL TO UNDERSIDE OF FITTINGS. THE APPROXIMATE POSITIONS OF LIGHTING FITTINGS, SOCKET OUTLETS, MAIN SWITCHGEAR AND DISTRIBUTION BOARDS SHALL BE INDICATED ON THE DRAWINGS.

THE CONTRACTOR SHALL DETERMINE THE EXACT POSITIONS OF ANY CONDUIT RUNS, WHEN NECESSARY, IN CONSULTATION WITH THE ENGINEER AND WITH THE LOCAL POWER SUPPLY AUTHORITY.

SWITCHGEAR, DISTRIBUTION BOARDS AND CONSUMER UNITS SHALL, UNLESS DETAILED TO THE CONTRARY, BE MOUNTED WITH THE LOWER EDGE 2000MM FROM THE FINISHED FLOOR LEVEL.

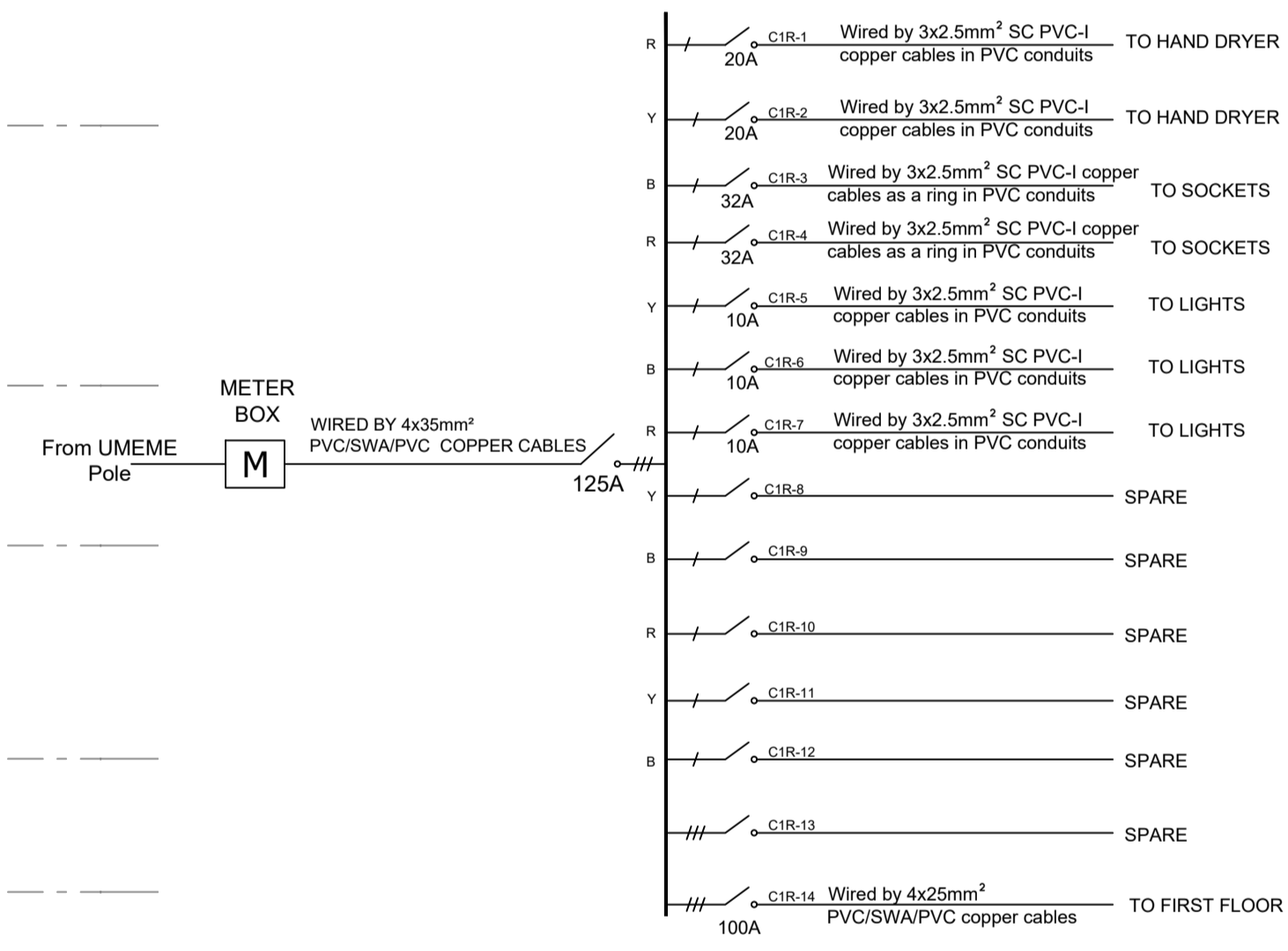
LIGHT SWITCHES, OTHER THAN CEILING SWITCHES, SHALL BE FIXED AT 1400MM TO CENTRE OF SWITCH ABOVE FINISHED FLOOR LEVEL.

ISOLATORS AND SWITCH FUSES OTHER THAN THOSE MOUNTED ON BUS BAR CHAMBERS OR PROVIDING LOCAL CONTROL SHALL BE UNLESS OTHERWISE STATED ON THE DRAWINGS, FIXED AT 1400MM FROM FINISHED FLOOR LEVEL TO UNDERSIDE OF FITTING.

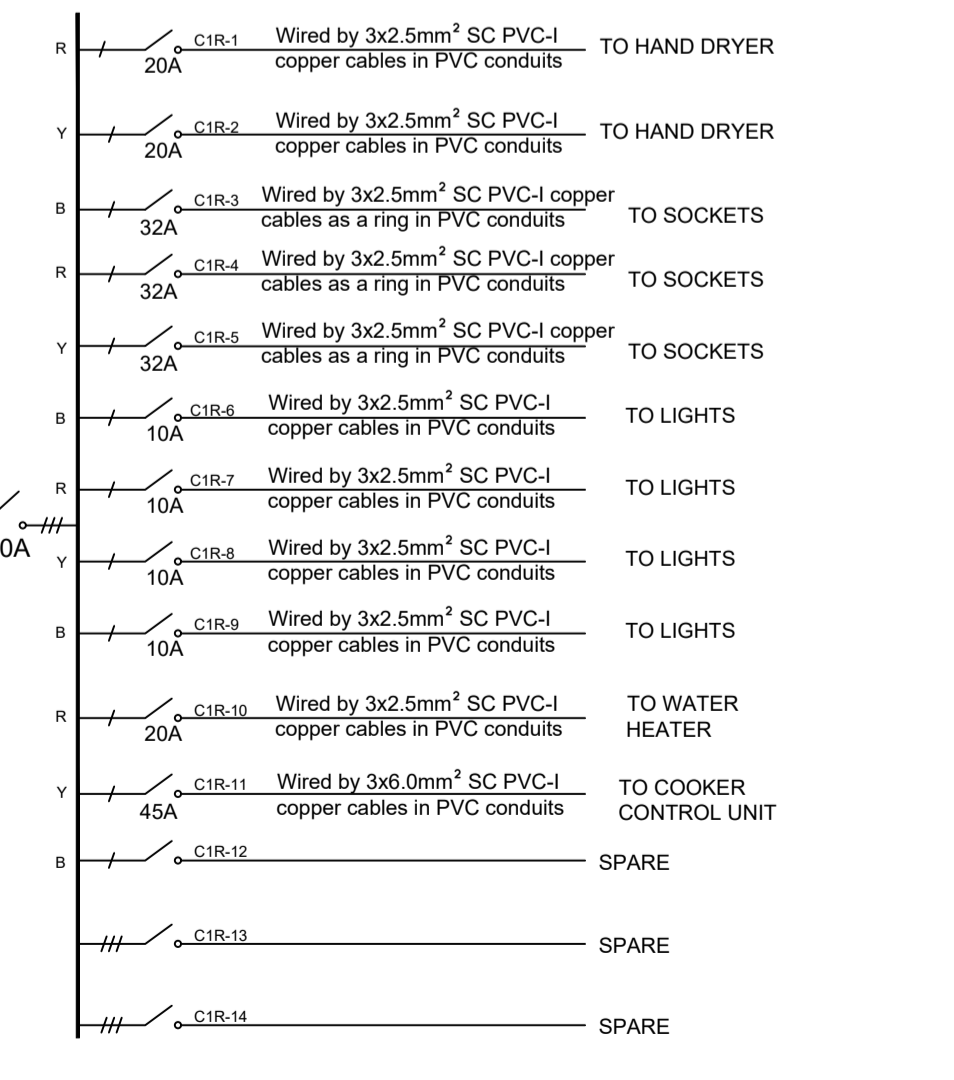
ON A FLAT CEILING WITH ON OBSTRUCTIONS, THE RADIUS OF PROTECTION OF FIRE DETECTORS IS 7.5M FOR A SMOKE DETECTOR AND 5.3M FOR A FIRE DETECTOR, AND SHOULD BE MOUNTED 0.5M FROM WALL. STANDARD SMOKE DETECTORS SPACING IS 10.0M AND 7.8M FOR HEAT DETECTORS.

HAND UNDER DRYER SHALL BE INSTALLED AT 1170mm for Men, 1120mm for Women & 940mm for PDW.

NOTES



125A, 6-WAY TPN MAIN DISTRIBUTION BOARD for GROUND FLOOR



100A, 6-WAY TPN MAIN DISTRIBUTION BOARD for FIRST FLOOR

revisions:

Client: **MINISTRY OF HEALTH / ENABEL**

Plot 6, Lumbale Road, Nakasongola
P.O. Box 7272, Kampala Uganda
Phone: Tel: +256 41 712260

Job Title: **PUBLIC SERVICES CONTRACT FOR CONSULTANCY SERVICES FOR DESIGN AND SUPERVISION OF WORKS FOR CALL & DISPATCH CENTRE IN ARUA REGIONAL**

STUDIONE DESIGN GROUP Ltd

P.O. Box 24733, AGIP HOUSE, ROOM 33, INJA ROAD, KAMPALA, UGANDA
TEL: +256 41 7101 250/98520756
E-mail: info@studionedg.com
Web: www.studionedg.com

ARCHITECTURE * PROJECT MANAGEMENT * ENGINEERING

Drawing Name: **ELECTRICAL INSTALLATION DESIGN**

LIGHTING LAYOUT: FLOOR PLANS - OPTION 01

Drawn by: NI	Checked by: ES
Date: MARCH 2023	Scale: 1:100 @A1
Revision:	Drawing No. E01

Arch. Ssinabulya Emmanuel

ARC Reg No. 223 PC No. 2925

NOTES

SYMBOL	DESCRIPTION
	Hand Dryer
	Double pole switch
	Socket outlet on Wall
	Socket outlet on Trunking
	Power, Voice & Data outlet
	Twin Data Point
	Voice Point
	High Definition Media Interface
	167 x 50mm 3 Section PVC Trunking
	Distribution Board
	Fire alarm panel
	Smoke Detector
	Heat Detector
	Break Glass Unit
	Alarm Sounder
	CCTV - Dome Type
	CCTV - Bullet Type
	PABOX
	Network Video Decoder
	CCTV Monitor
	Projector
	6kg Carbon dioxide type, wall mounted fire extinguisher as ANGUS CS6HH, or equal approved
	9kg Monoammonium phosphate Grade IAIB dry powder type, cartridge operated, wall mounted fire extinguisher as ANGUS, or equal approved

revisions:

Client **MINISTRY OF HEALTH / ENABEL**

Job Title
PUBLIC SERVICES CONTRACT FOR CONSULTANCY SERVICES FOR DESIGN AND SUPERVISION OF WORKS FOR CALL & DISPATCH CENTRE IN ARUA REGIONAL

STUDIONE DESIGN GROUP Ltd

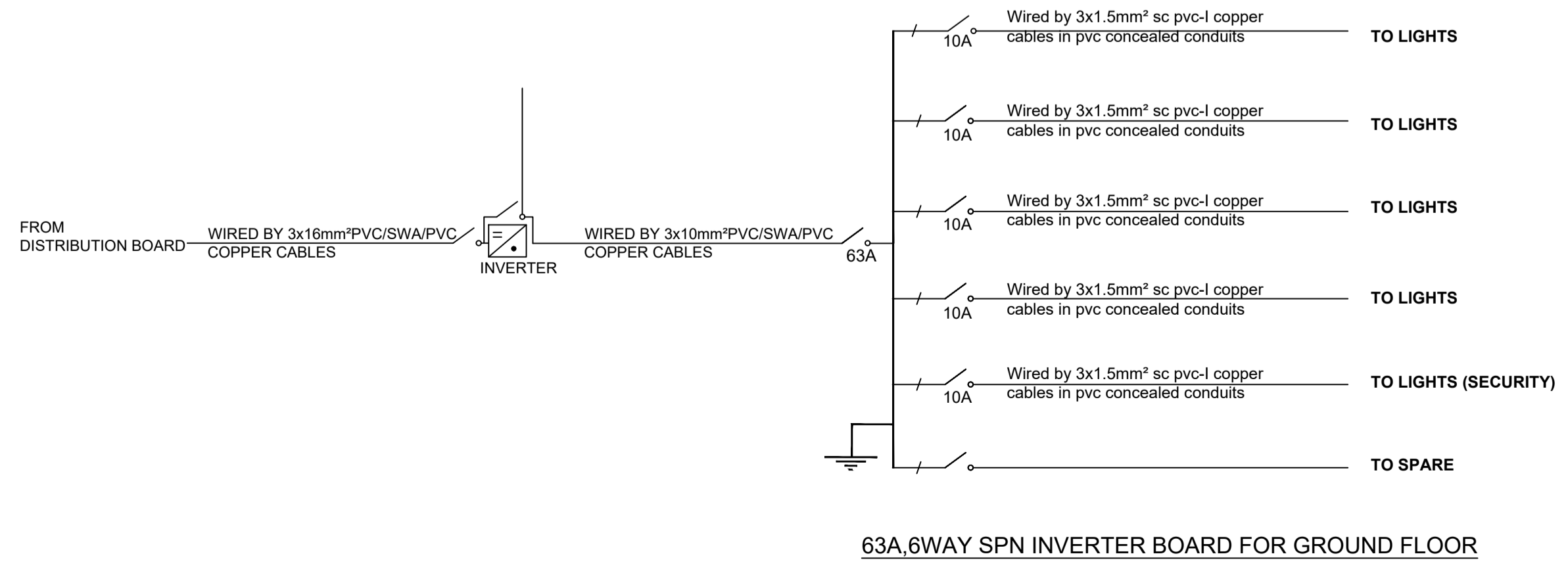
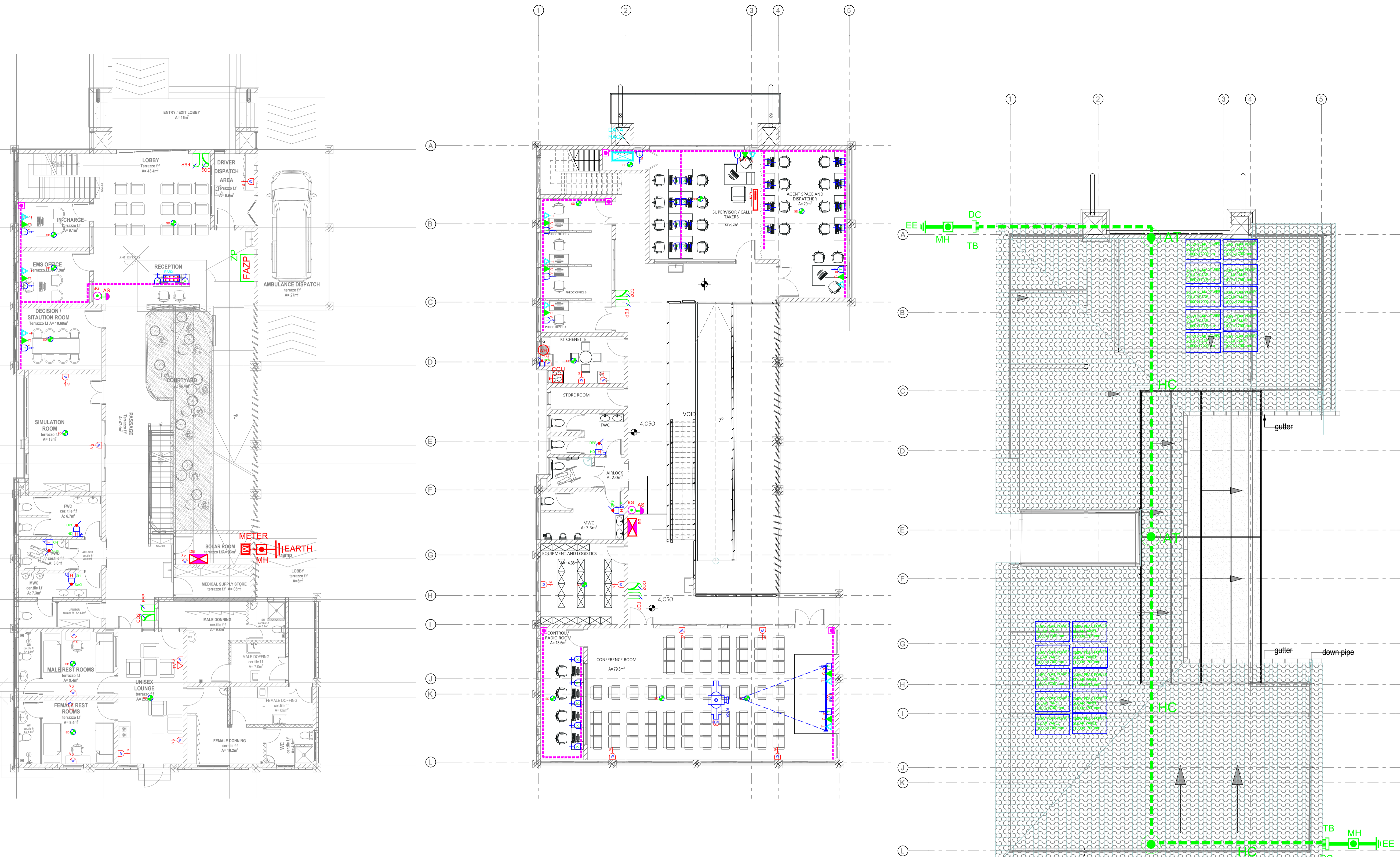
ARCHITECTURE * PROJECT MANAGEMENT * ENGINEERING

Drawing Name
**ELECTRICAL INSTALLATION DESIGN
POWER, ICT & LIGHTNING PROTECTION LAYOUT:
FLOOR PLANS - OPTION 01**

Drawn by NI	Checked by ES
Date MARCH 2023	Scale 1:100 @A1
Revision	Drawing No. E02

Arch. Ssinabulya Emmanuel

ARC Reg No. 223 PC No. 2925



- LEGEND**
- AT AIR TERMINAL
 - TC TEST CLAMP
 - MH INSPECTION MANHOLE
 - EE EARTH ELECTRODE
 - HC HORIZONTAL CONDUCTOR
 - DC DOWN CONDUCTOR

