

Enabel - Belgian Development Agency



**PUBLIC WORKS CONTRACT FOR THE DEVELOPMENT OF SEMI-PUBLIC
SPACES IN EAST JERUSALEM**

Reference No.: PZA170421T-10029
Bustan Tent

Funded By



Designed by

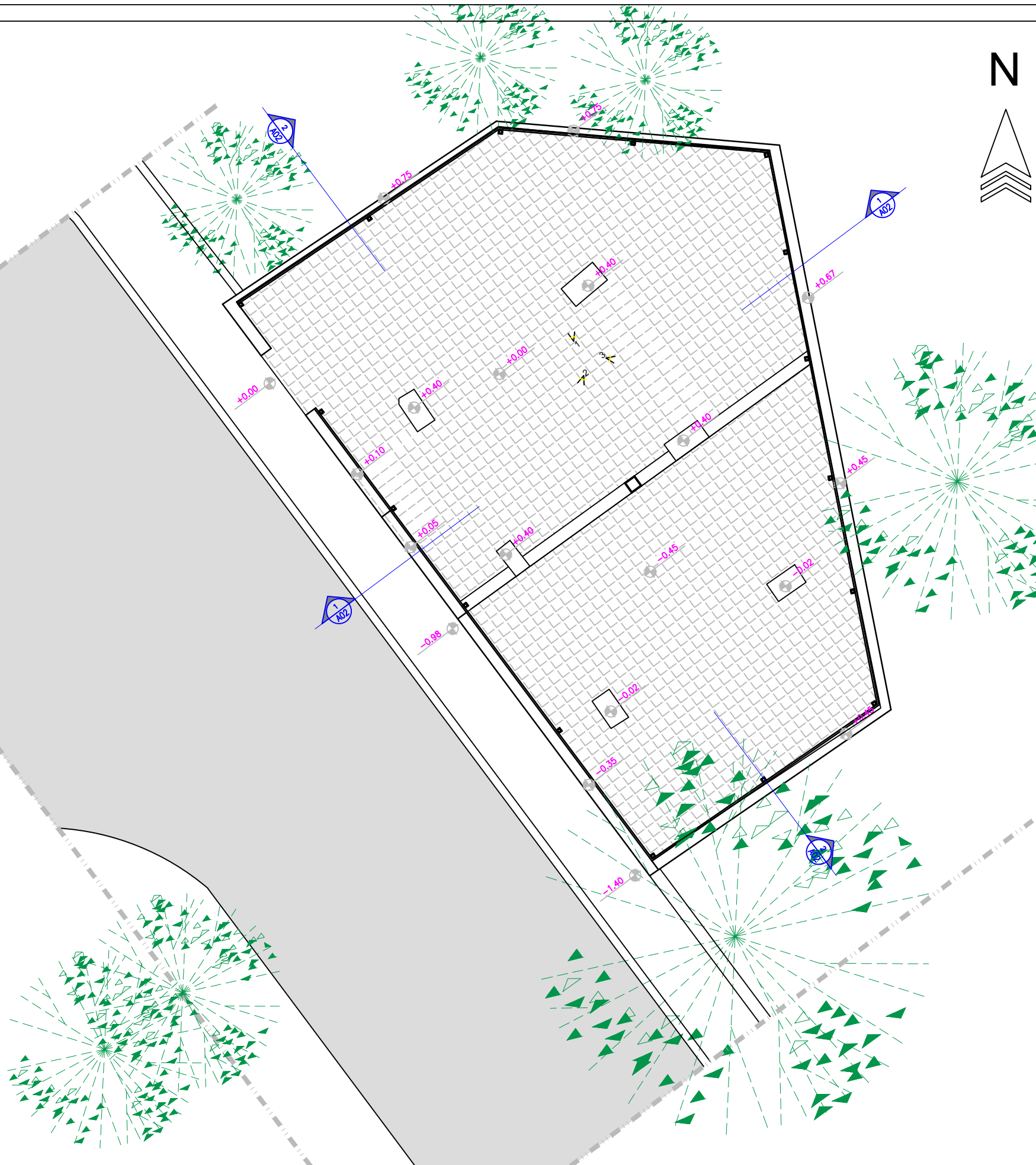
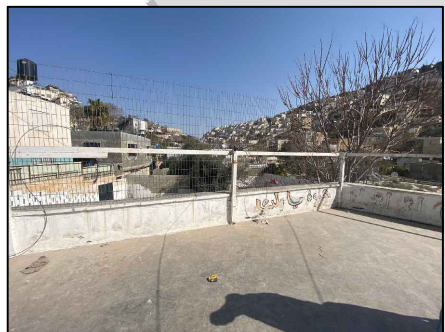


Jerusalem - Sheikh Jarrah- Tobler8

July 2023

1. Architectural Drawings

A01	Existing Floor Plans
A02	Sections of Existing Situation
A03	NEW DESIGN_ SITE PLAN
A04	FURNITURE PLAN
A05	Sections of New Design
A06	DIMENSION PLAN
A07	Details
A08	Details
A09	Details
A10	Details
A11	Details



Notes

- (1) All Dimensions Are In M.
- (2) All Levels Are In Meter
- (3) Any Missing or Unclear Detail And All Fastening Systems For All Elements Shall be Approved by The Supervisor.

Legend:

SECTION NUMBER	ROOM CODE	FUNCTION AREA	ROOM ID
REFERENCE SHEET NUMBER	DOOR NUMBER	DOOR NUMBER	REFERENCE DETAIL SHEET NUMBER
REFERENCE DETAIL SHEET NUMBER	WINDOW NUMBER	WINDOW NUMBER	REFERENCE DETAIL SHEET NUMBER
FLOOR FINISH LEVEL (F.F.L.)	LEVEL SIGN IN PLAN	ENTRANCE	DETAILED SECTION AT SHEET No. A09
REINFORCEMENT CONCRETE LEVEL (R.C.L.)		ARTIFICIAL GRASS	
STEEL SHEETS		PORCELAIN TILES (PARQUET STYLE)	
RC CONCRETE FOR COLUMNS		PORCELAIN TILES (PARQUET STYLE)	
RC CONCRETE FOR WALLS		BITUMINOUS MEMBRANE LAYER	
CONCRETE			
STONE WALL			
HOLLOW BLOCKS			
CEMENT TILE			
PORCELAIN TILE	R.C.L.-REN. CONCRETE LEVEL		
LOCAL MARBLE	F.F.L.-FINISH FLOOR LEVEL		
Gypsum partition	S.L.-SEA LEVEL		

REVISIONS

NO.	DRAWINGS	DATE
(1)		
(2)		
(3)		

Contracting Authority:

Enabel - Belgian Development Agency



Funded By:



Project Title:

Public services contract for "Participatory design and supervision of Public and Semi-Public spaces in East Jerusalem / Silwan neighborhood"

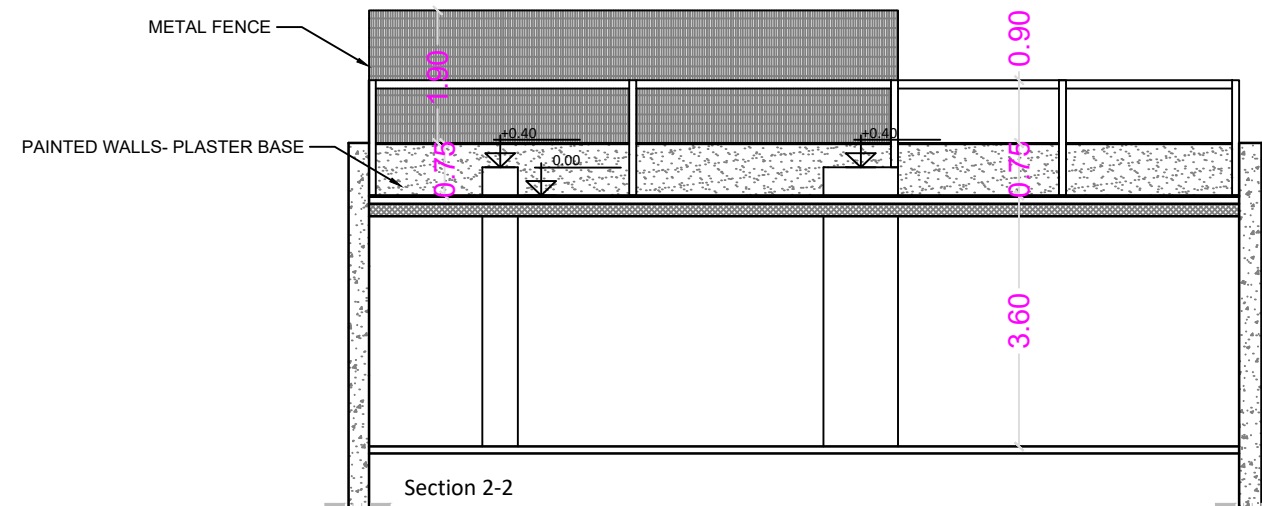
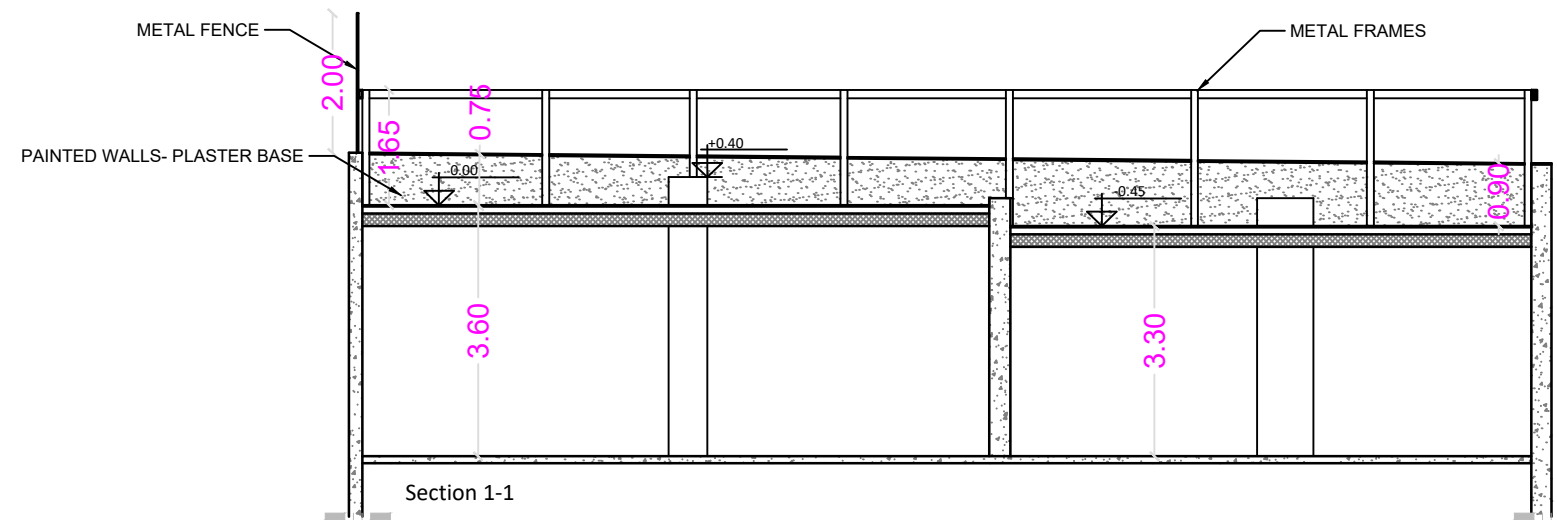
Reference No.: PZA170421T-10028

Designed by:



Jerusalem - Sheikh Jarrah- Tobler8
email: mr.wasimhija@gmail.com
Tel. 02-9948344/ 052-8327076
Fax: 02-9948344

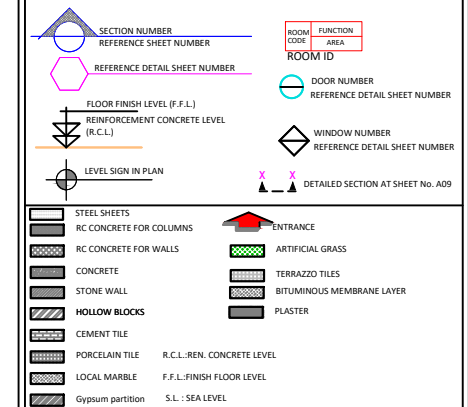
Drawing Title	Existing Ground Floor PLAN	Date: 28/3/2023 Scale: 1:100
Designed by:	Arch. Hiba Al Ayoubi	Drawing No: A01
Checked by:	Arch. Wasim Abu El-Hija	
Approved by:		
Coordinate Manager:		



Notes

- (1) All Dimensions Are In M.
- (2) All Levels Are In Meter
- (3) Any Missing or Unclear Detail And All Fastening Systems For All Elements Shall be Approved by The Supervisor.

Legend:



REVISIONS

NO.	DRAWINGS	DATE
(1)		
(2)		
(3)		

Contracting Authority:

Enabel - Belgian Development Agency



Funded By:



Project Title:

Public services contract for "Participatory design and supervision of Public and Semi-Public spaces in East Jerusalem / Silwan neighborhood"

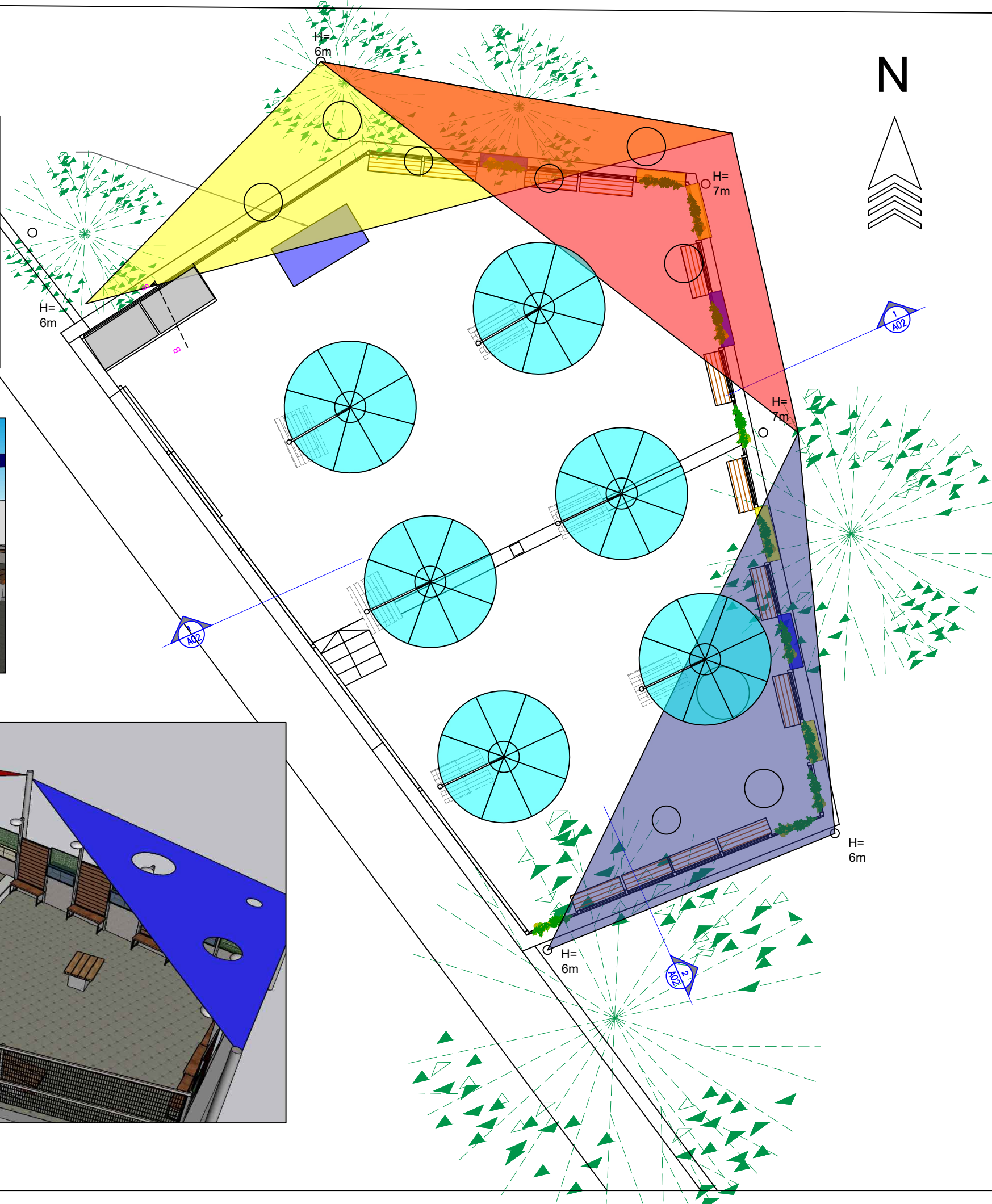
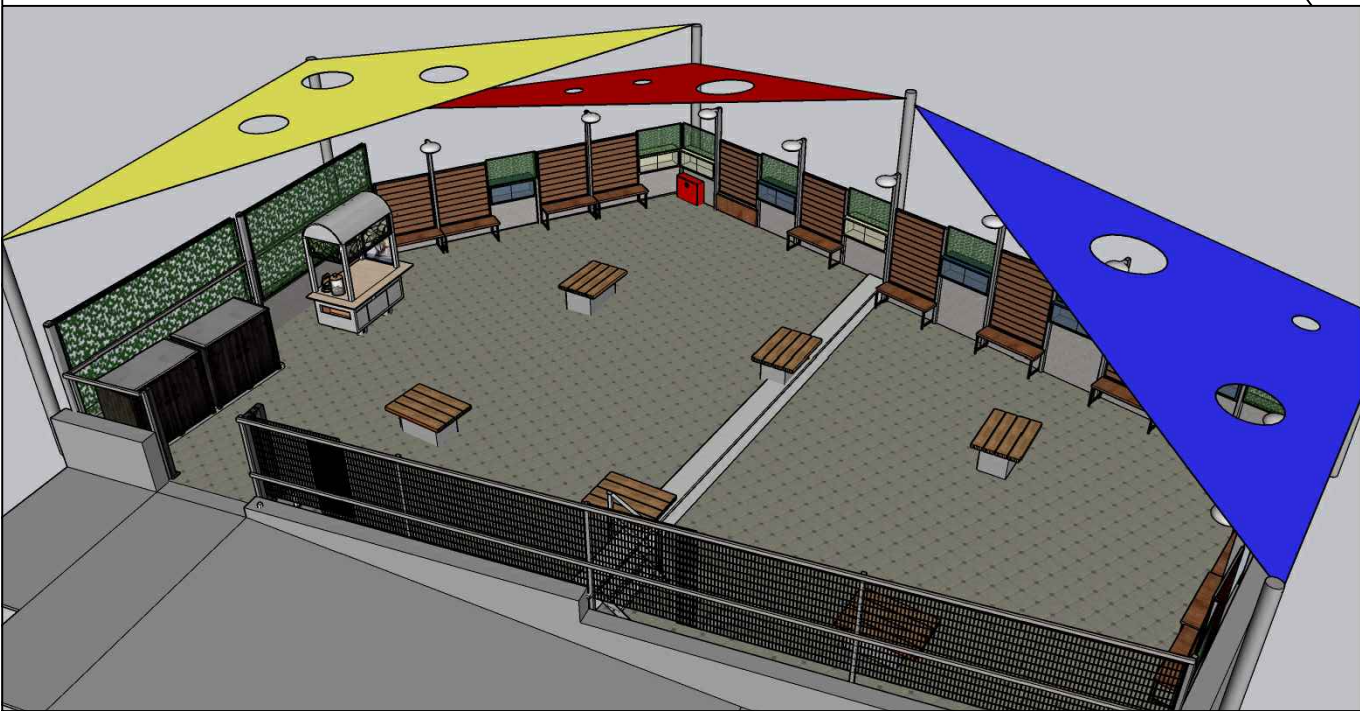
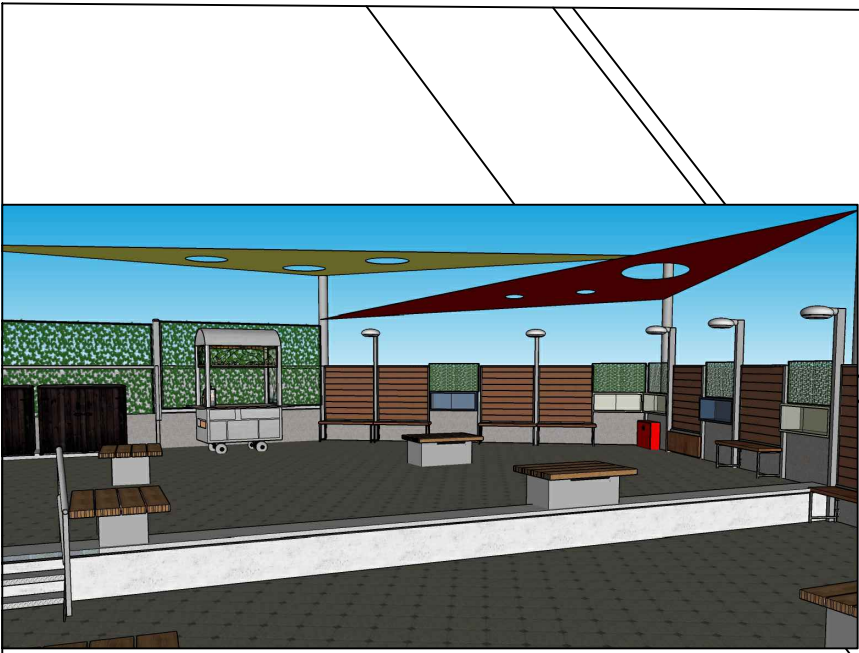
Reference No.: PZA170421T-10028

Designed by:



Jerusalem - Sheikh Jarrah- Tobler8
email: mr.wasimhija@gmail.com
Tel. 02-9948344/ 052-8327076
Fax: 02-9948344

Drawing Title	Sections of Existing Situation	Date: 28/3/2023 Scale: 1:100
Designed by:	Arch. Hiba Al Ayoubi	Drawing No:
Checked by:	Arch. Wasim Abu El-Hija	A02
Approved by:		
Coordinate Manager:		



Notes: (1) All Dimensions Are In M.
(2) All Levels Are In Meter
(3) Any Missing or Unclear Detail And All Fastening Systems For All Elements Shall be Approved by The Supervisor.

Legend:

SECTION NUMBER REFERENCE SHEET NUMBER	ROOM CODE FUNCTION AREA ROOM ID
REFERENCE DETAIL SHEET NUMBER	DOOR NUMBER REFERENCE DETAIL SHEET NUMBER
FLOOR FINISH LEVEL (F.F.L.) REINFORCEMENT CONCRETE LEVEL (R.C.L.)	WINDOW NUMBER REFERENCE DETAIL SHEET NUMBER
LEVEL SIGN IN PLAN	DETAILED SECTION AT SHEET No. A09

STEEL SHEETS	ENTRANCE
RC CONCRETE FOR COLUMNS	ARTIFICIAL GRASS
RC CONCRETE FOR WALLS	PORCELAIN TILES (PARQUET STYLE)
CONCRETE	PORCELAIN TILES (PARQUET STYLE)
STONE WALL	BITUMINOUS MEMBRANE LAYER
HOLLOW BLOCKS	
CEMENT TILE	
PORCELAIN TILE	R.C.L.: REN. CONCRETE LEVEL
LOCAL MARBLE	F.F.L.: FINISH FLOOR LEVEL
Gypsum partition	S.L.: SEA LEVEL

REVISIONS		
NO.	DRAWINGS	DATE
(1)		
(2)		
(3)		

Contracting Authority:
Enabel - Belgian Development Agency

Funded By:

This Project is Funded by

EUROPEAN UNION

Belgium
partner in development

Project Title:
Public services contract for "Participatory design and supervision of Public and Semi-Public spaces in East Jerusalem / Silwan neighborhood"
Reference No.: PZA170421T-10028

Designed by:

HOSH STUDIO
ARCHITECTURE & TOWN PLANNING

Jerusalem - Sheikh Jarrah- Tobler8
email: mr.wasimhija@gmail.com

Tel. 02-9948344/ 052-8327076
Fax: 02-9948344

Drawing Title	NEW DESIGN_ SITE PLAN	Date: 28/3/2023 Scale: 1:100
Designed by:	Arch. Hiba Al Ayoubi	Drawing No: A03
Checked by:	Arch. Wasim Abu El-Hija	
Approved by:		
Coordinate Manager:		



5

H=7m
O

5 86*147*120 cm
Galvanized outdoor
storage

6 86*147*120 cm
Galvanized outdoor
storage

H=7m
O

H=7m
O

H=6m
O

H=6m
O

1



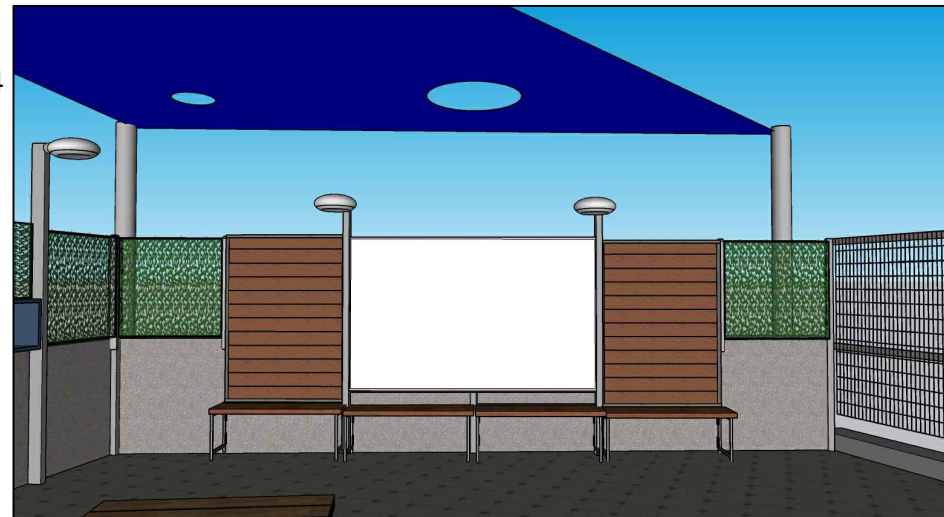
2



3



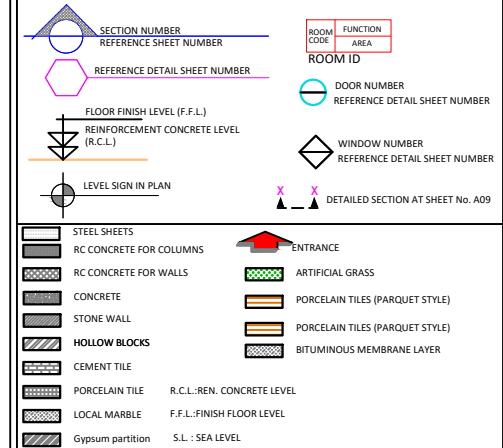
4



Notes

- (1) All Dimensions Are In M.
- (2) All Levels Are In Meter
- (3) Any Missing or Unclear Detail And All Fastening Systems For All Elements Shall be Approved by The Supervisor.

Legend:



REVISIONS

NO.	DRAWINGS	DATE
(1)		
(2)		
(3)		

Contracting Authority:

Enabel - Belgian Development Agency

Enabel

Funded By:



Project Title:

Public services contract for "Participatory design and supervision of Public and Semi-Public spaces in East Jerusalem / Silwan neighborhood"

Reference No.: PZA170421T-10028

Designed by:

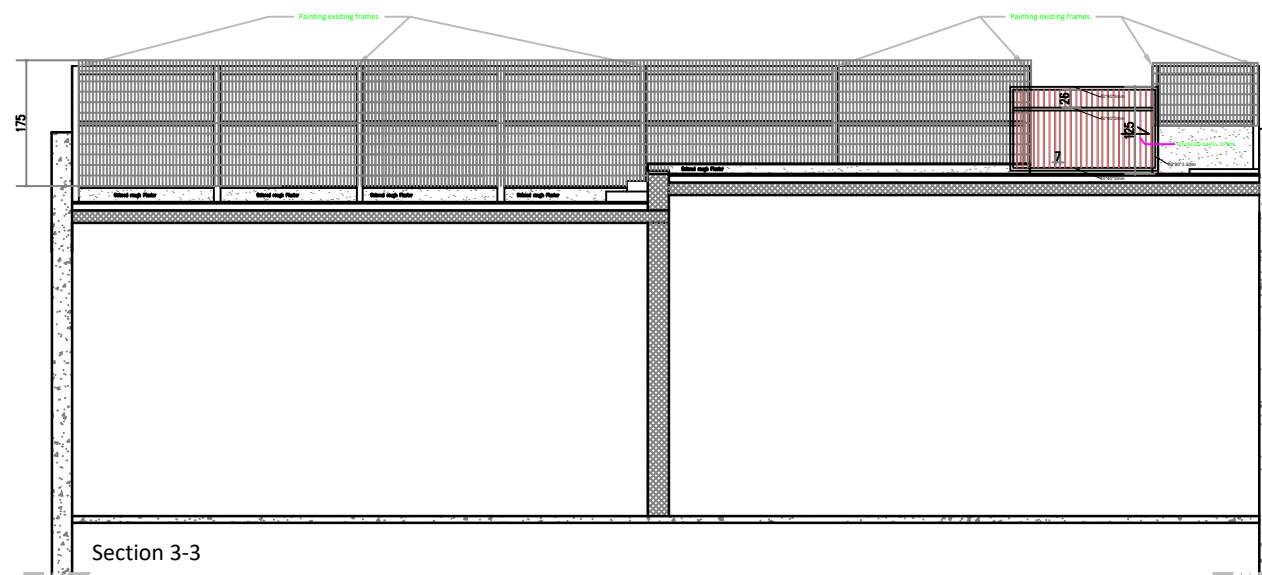
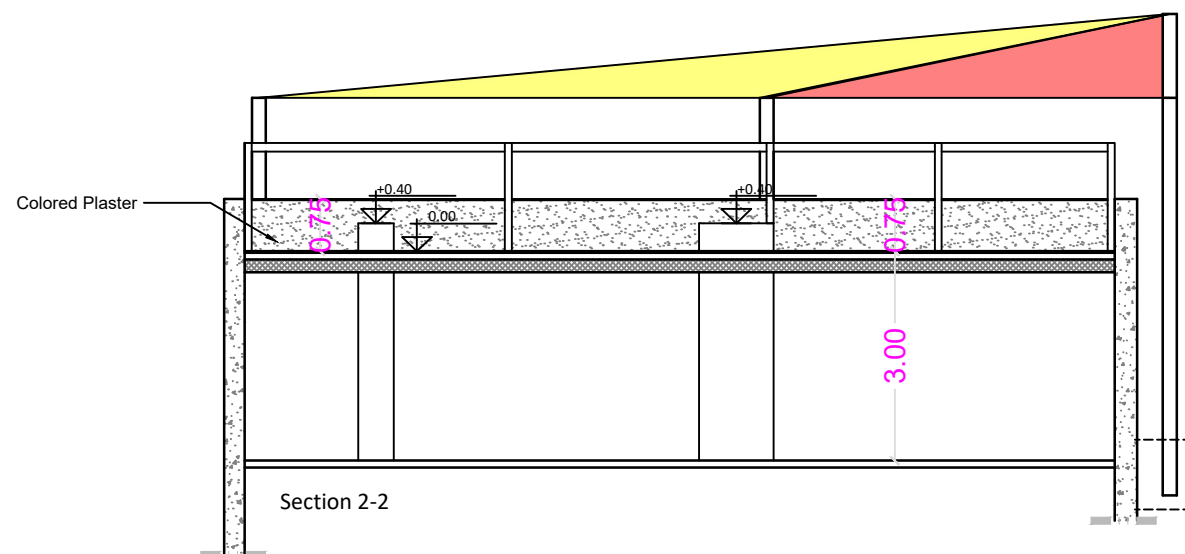
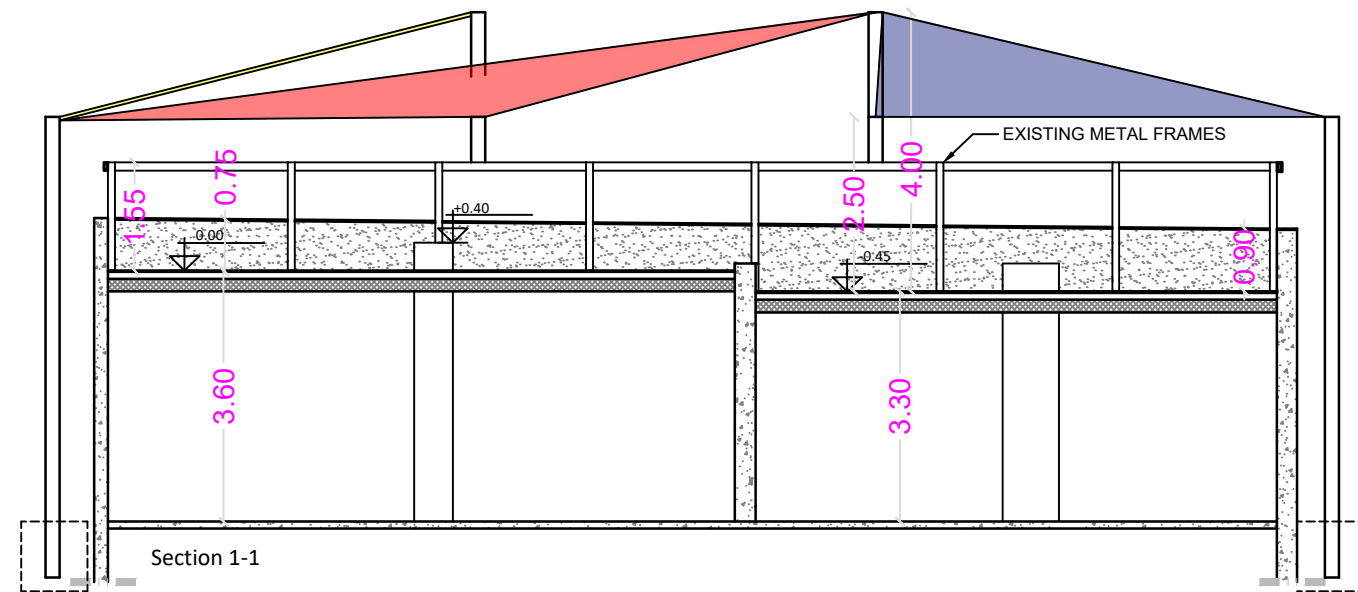


Jerusalem - Sheikh Jarrah- Tobler8
email: mr.wasimhija@gmail.com
Tel. 02-9948344/ 052-8327076
Fax: 02-9948344

Drawing Title

FURNITURE PLAN

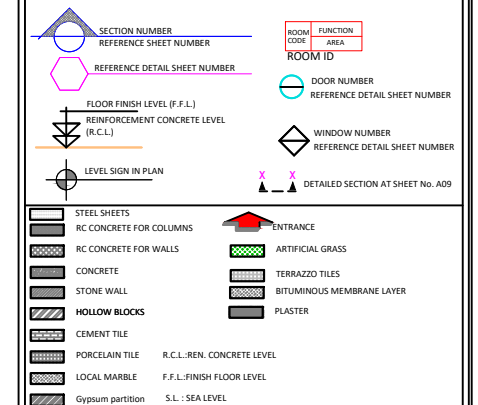
Designed by:	Arch. Hiba Al Ayoubi	Date: 28/3/2023
Checked by:	Arch. Wasim Abu El-Hija	Scale: 1:100
Approved by:		Drawing No: A04
Coordinate Manager:		



Notes

- (1) All Dimensions Are In M.
- (2) All Levels Are In Meter
- (3) Any Missing or Unclear Detail And All Fastening Systems For All Elements Shall be Approved by The Supervisor.

Legend:



REVISIONS

NO.	DRAWINGS	DATE
(1)		
(2)		
(3)		

Contracting Authority:

Enabel - Belgian Development Agency



Funded By:



Project Title:

Public services contract for “Participatory design and supervision of Public and Semi-Public spaces in East Jerusalem / Silwan neighborhood”

Reference No.: PZA170421T-10028

Designed by:



Jerusalem - Sheikh Jarrah- Tobler8 Tel. 02-9948344/ 052-8327076
email: mr.wasimhija@gmail.com Fax: 02-9948344

<div>Drawing Title</div>	Sections of New Design		Date: 28/3/2023
			Scale: 1:100
	Designed by:	Arch. Hiba Al Ayoubi	Drawing No: <div>A05</div>
	Checked by:	Arch. Wasim Abu El-Hija	
	Approved by:		
Coordinate Manager:			



Notes (1) All Dimensions Are In M.
 (2) All Levels Are In Meter
 (3) Any Missing or Unclear Detail And All Fastening Systems For All Elements Shall be Approved by The Supervisor.

Legend:

	SECTION NUMBER	REFERENCE SHEET NUMBER
	LEVEL SIGN IN PLAN	DETAILED SECTION AT SHEET No. A09
	NEW GALVANIZED STEEL TUBES with same dim. of existing tubes	
	EXISTING STEEL TUBES	
	NEW GALVANIZED STEEL TUBES	
	RC CONCRETE FOR COLUMNS	
	RC CONCRETE FOR WALLS	
	CONCRETE	
	STONE WALL	
	HOLLOW BLOCKS	
	CEMENT TILE	
	PORCELAIN TILE	
	LOCAL MARBLE	
	Gypsum partition	
	ENTRANCE	
	ARTIFICIAL GRASS	
	PORCELAIN TILES (PARQUET STYLE)	
	PORCELAIN TILES (PARQUET STYLE)	
	BITUMINOUS MEMBRANE LAYER	
	R.C.L. REN. CONCRETE LEVEL	
	F.F.L. FINISH FLOOR LEVEL	
	S.L. : SEA LEVEL	

REVISIONS		
NO.	DRAWINGS	DATE
(1)		
(2)		
(3)		

Contracting Authority:
 Enabel - Belgian Development Agency



Funded By:



Project Title:
 Public services contract for "Participatory design and supervision of Public and Semi-Public spaces in East Jerusalem / Silwan neighborhood"
Reference No.: PZA170421T-10028

Designed by:

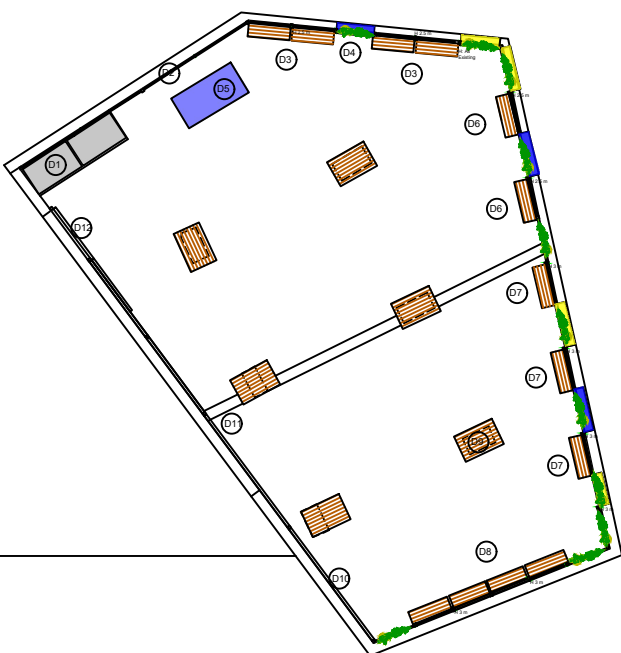
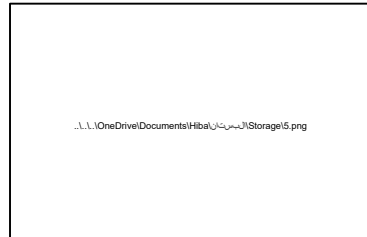


Jerusalem - Sheikh Jarrah - Tobler8 Tel. 02-9948344 / 052-8327076
 email: mr.wasimhija@gmail.com Fax: 02-9948344

Drawing Title	DIMENSION PLAN	Date: 28/3/2023 Scale: 1:100
Designed by:	Arch. Hiba Al Ayoubi	Drawing No:
Checked by:	Arch. Wasim Abu El-Hija	A06
Approved by:		
Coordinate Manager:		

D1

Improved compact ICE model galvanized metal storage 147X86X134 cm
Need to build stone step to be elevated



Notes
(1) All Dimensions Are In M.
(2) All Levels Are In Meter
(3) Any Missing or Unclear Detail And All Fastening Systems For All Elements Shall be Approved by The Supervisor.

Legend:

SECTION NUMBER

REFERENCE SHEET NUMBER

LEVEL SIGN IN PLAN

DETAILED SECTION AT SHEET No. A09

NEW GALVANIZED STEEL TUBES with same dim. of existing tubes

EXISTING STEEL TUBES

NEW GALVANIZED STEEL TUBES

RC CONCRETE FOR COLUMNS

RC CONCRETE FOR WALLS

CONCRETE

STONE WALL

HOLLOW BLOCKS

CEMENT TILE

PORCELAIN TILE

LOCAL MARBLE

Gypsum partition

ENTRANCE

ARTIFICIAL GRASS

PORCELAIN TILES (PARQUET STYLE)

PORCELAIN TILES (PARQUET STYLE)

BITUMINOUS MEMBRANE LAYER

R.C.L.-REN. CONCRETE LEVEL

F.F.L.-FINISH FLOOR LEVEL

S.L.-SEA LEVEL

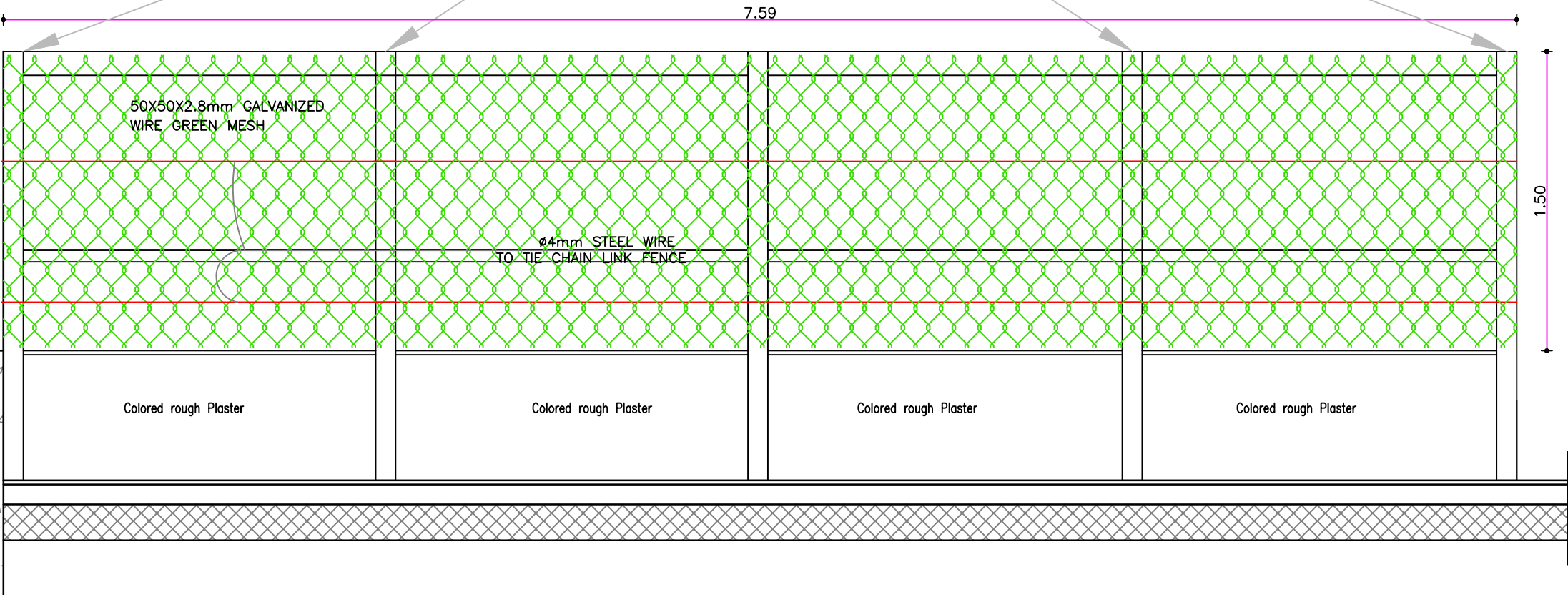
D2

GREEN FENCE with height of 1.5m: A two-sided artificial grass fence, combined with a galvanized mesh fence, 1.6 mm thick for conifers



Painting existing frames

New frames as existing Dim.



REVISIONS		
NO.	DRAWINGS	DATE
(1)		
(2)		
(3)		

Contracting Authority:
Enabel - Belgian Development Agency

Funded By:

This Project Is Funded by

EUROPEAN UNION

Belgium partner in development

Project Title:
Public services contract for "Participatory design and supervision of Public and Semi-Public spaces in East Jerusalem / Silwan neighborhood"
Reference No.: PZA170421T-10028

Designed by:

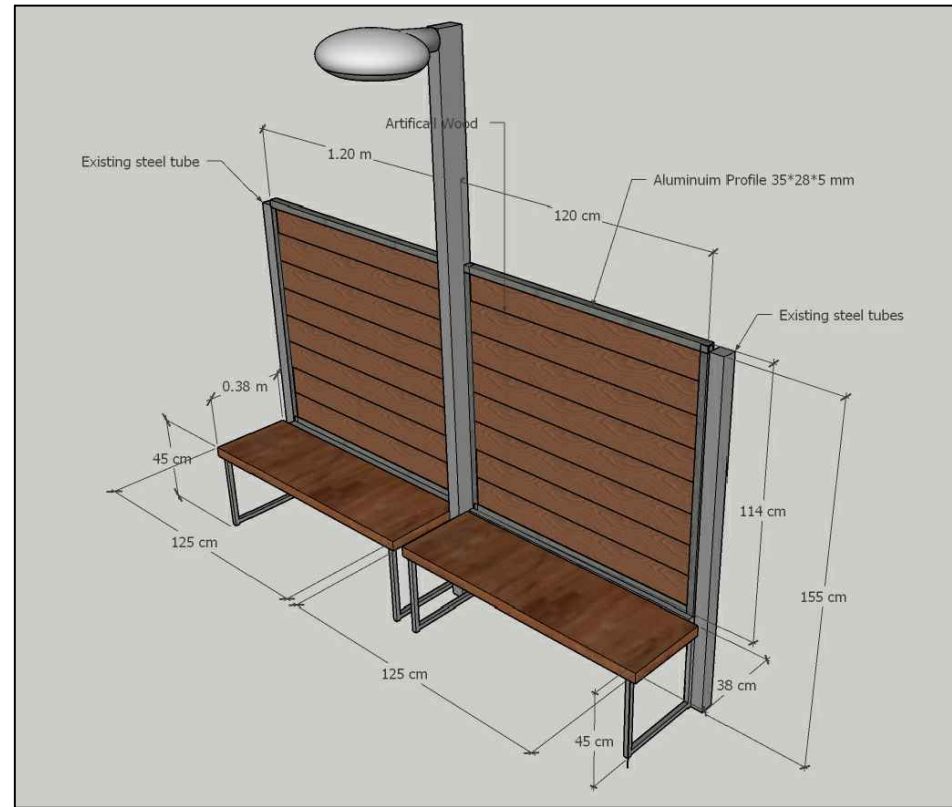
HOSH STUDIO
ARCHITECTURE & TOWN PLANNING

Jerusalem - Sheikh Jarrah- Tobler8
email: mr.wasimhija@gmail.com

Tel. 02-9948344/ 052-8327076
Fax: 02-9948344

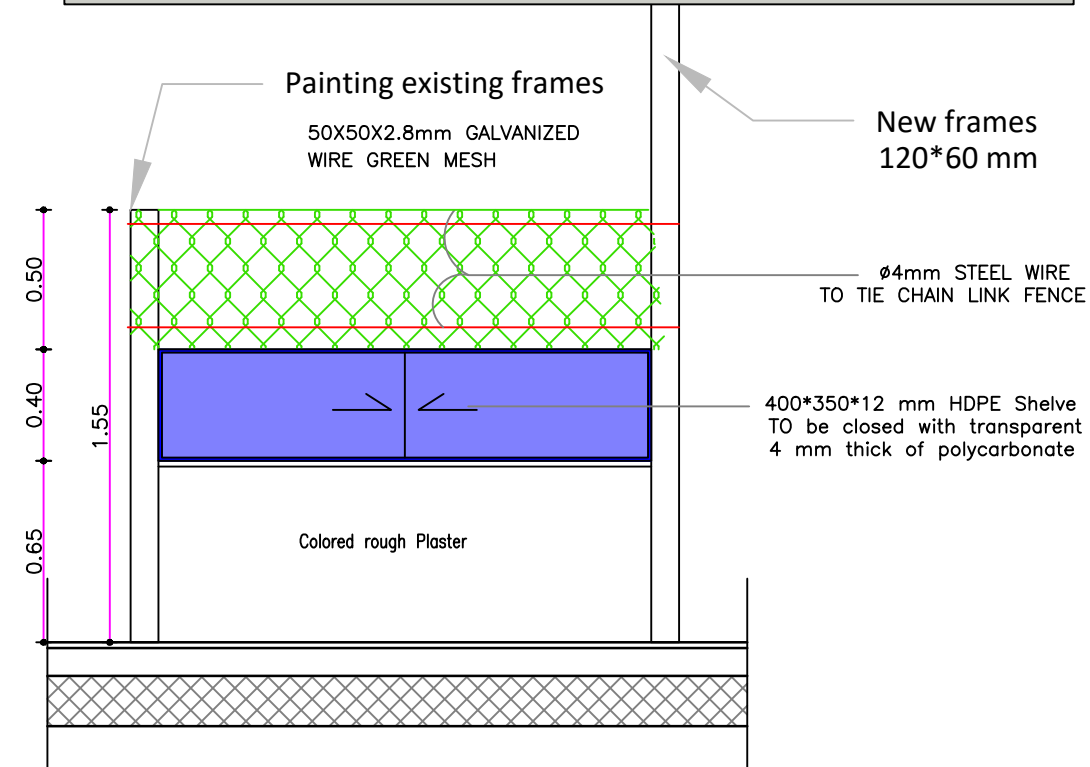
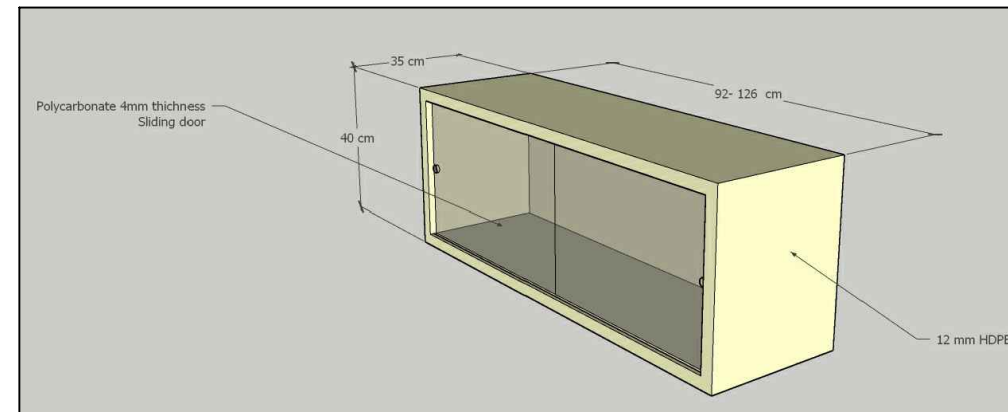
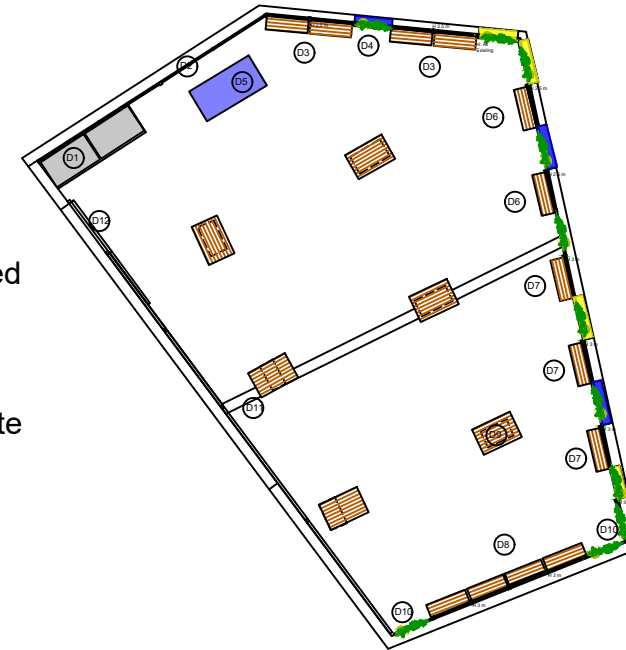
Drawing Title	Details	Date: 28/3/2023 Scale: 1:20
Designed by:	Arch. Hiba Al Ayoubi	Drawing No:
Checked by:	Arch. Wasim Abu El-Hija	A07
Approved by:		
Coordinate Manager:		

D3



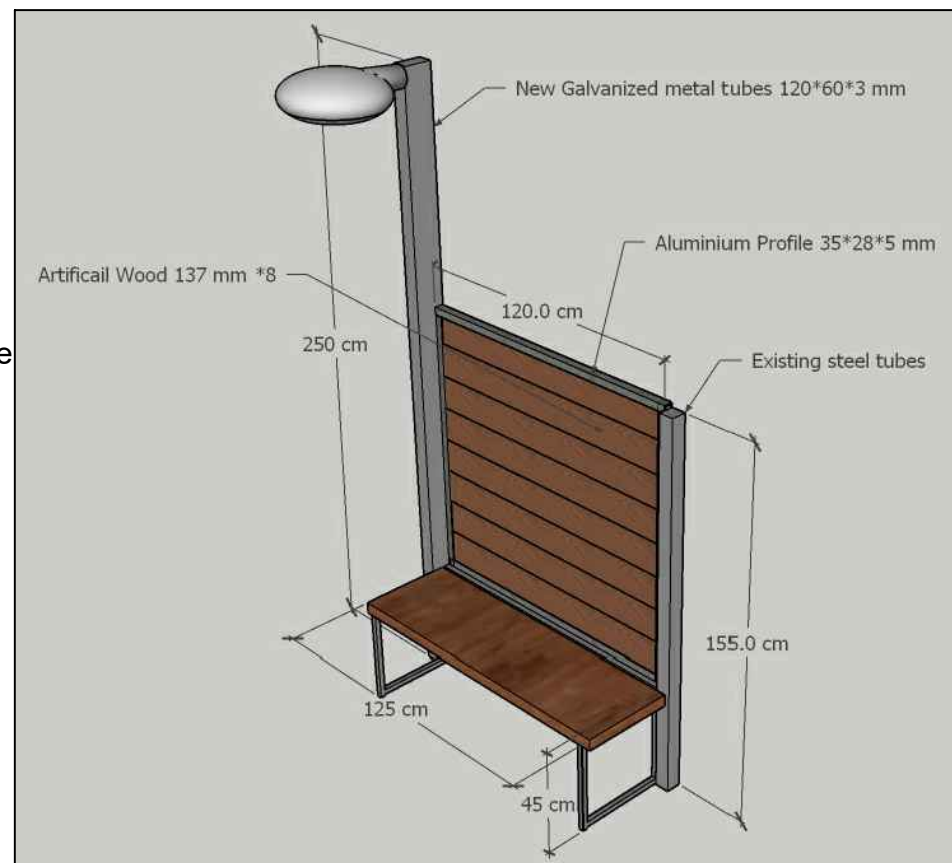
D4

GREEN FENCE with height of 0.5m: A two-sided artificial grass fence, combined with a galvanized mesh fence, 1.6 mm thick for conifers
With HDPE Shelves closed with sliding 4mm thick of polycarbonate "glass"



D6 & D7

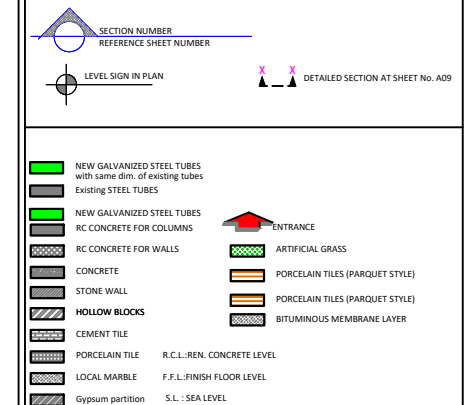
D7 is the same of D6 except the height of wooden fence is higher by 40 cm



Notes

- (1) All Dimensions Are In M.
- (2) All Levels Are In Meter
- (3) Any Missing or Unclear Detail And All Fastening Systems For All Elements Shall be Approved by The Supervisor.

Legend:



REVISIONS

NO.	DRAWINGS	DATE
(1)		
(2)		
(3)		

Contracting Authority:

Enabel - Belgian Development Agency



Funded By:



Project Title:

Public services contract for "Participatory design and supervision of Public and Semi-Public spaces in East Jerusalem / Silwan neighborhood"

Reference No.: PZA170421T-10028

Designed by:



Jerusalem - Sheikh Jarrah- Tobler8
email: mr.wasimhija@gmail.com
Tel. 02-9948344/ 052-8327076
Fax: 02-9948344

Drawing Title

Details

Designed by:
Checked by:
Approved by:
Coordinate Manager:

Arch. Hiba Al Ayoubi
Arch. Wasim Abu El-Hija

Date: 28/3/2023
Scale: 1:100

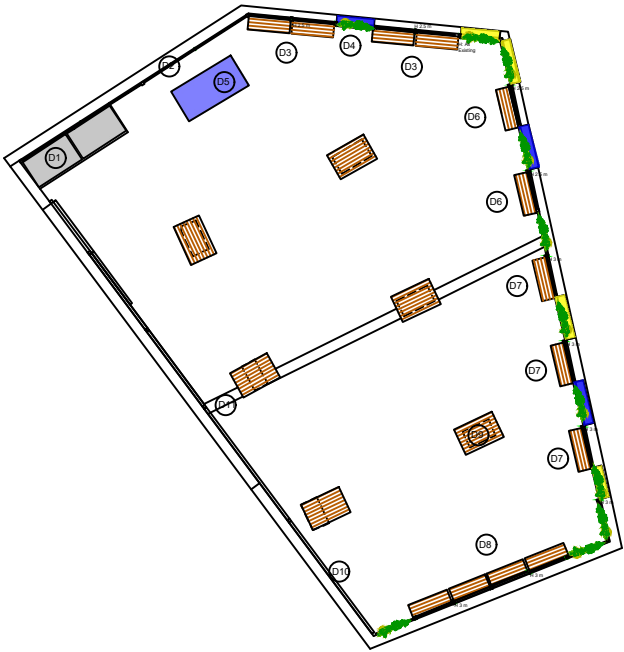
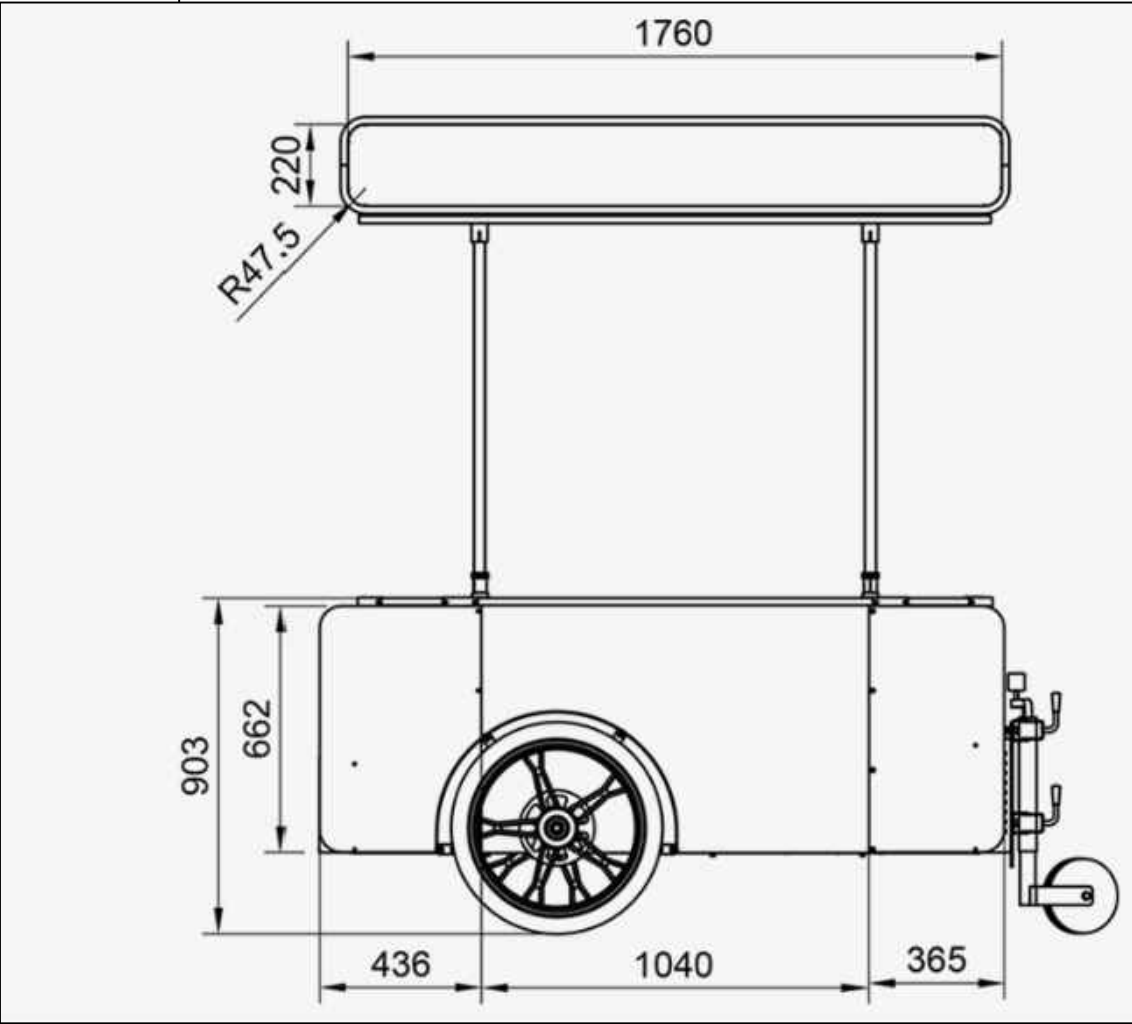
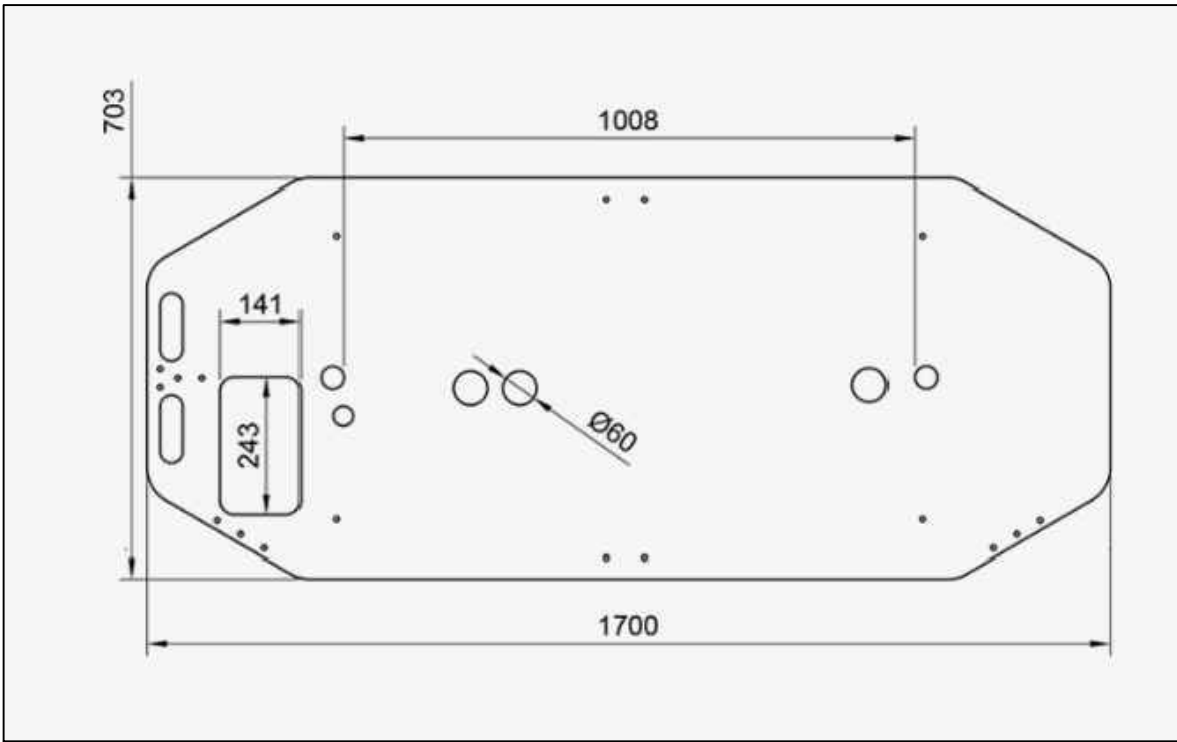
Drawing No: A08

D5

Coffee Cart 71 *180 cm
Galvanized oven painted
steel, from approved
manufacture



Counter top dimensions



Notes

- (1) All Dimensions Are In M.
- (2) All Levels Are In Meter
- (3) Any Missing or Unclear Detail And All Fastening Systems For All Elements Shall be Approved By The Supervisor.

Legend:

SECTION NUMBER
REFERENCE SHEET NUMBER

LEVEL SIGN IN PLAN

ENTRANCE

NEW GALVANIZED STEEL TUBES
with same dim. of existing tubes

EXISTING STEEL TUBES

NEW GALVANIZED STEEL TUBES

RC CONCRETE FOR COLUMNS

RC CONCRETE FOR WALLS

CONCRETE

STONE WALL

HOLLOW BLOCKS

CEMENT TILE

PORCELAIN TILE

LOCAL MARBLE

Gypsum partition

ARTIFICIAL GRASS

PORCELAIN TILES (PARQUET STYLE)

PORCELAIN TILES (PARQUET STYLE)

BITUMINOUS MEMBRANE LAYER

R.C.L.-REN. CONCRETE LEVEL

F.F.L.-FINISH FLOOR LEVEL

S.L.-SEA LEVEL

REVISIONS

NO.	DRAWINGS	DATE
(1)		
(2)		
(3)		

Contracting Authority:

Enabel - Belgian Development Agency



Funded By:



Project Title:

Public services contract for "Participatory design and supervision of Public and Semi-Public spaces in East Jerusalem / Silwan neighborhood"

Reference No.: PZA170421T-10028

Designed by:



Jerusalem - Sheikh Jarrah- Tobler8
email: mr.wasimhija@gmail.com

Tel. 02-9948344/ 052-8327076
Fax: 02-9948344

Drawing Title

Details

Date: 28/3/2023
Scale: 1:100

Designed by:

Arch. Hiba Al Ayoubi

Drawing No:

Checked by:

Arch. Wasim Abu El-Hija

A09

Approved by:

Coordinate Manager:

Notes

(1) All Dimensions Are In M.
(2) All Levels Are In Meter
(3) Any Missing or Unclear Detail And All Fastening Systems For All Elements Shall be Approved by The Supervisor.

Legend:

SECTION NUMBER
REFERENCE SHEET NUMBER

LEVEL SIGN IN PLAN

DETAILED SECTION AT SHEET No. A09

NEW GALVANIZED STEEL TUBES
EXISTING STEEL TUBES

NEW GALVANIZED STEEL TUBES
WITH SAME DIM. OF EXISTING TUBES

RC CONCRETE FOR COLUMNS

RC CONCRETE FOR WALLS

CONCRETE

STONE WALL

HOLLOW BLOCKS

CEMENT TILE

PORCELAIN TILE

LOCAL MARBLE

Gypsum partition

ENTRANCE

ARTIFICIAL GRASS

PORCELAIN TILES (PARQUET STYLE)

PORCELAIN TILES (PARQUET STYLE)

BITUMINOUS MEMBRANE LAYER

R.C.L.-REN. CONCRETE LEVEL

F.F.L.-FINISH FLOOR LEVEL

S.L.-SEA LEVEL

REVISIONS		
NO.	DRAWINGS	DATE
(1)		
(2)		
(3)		

Contracting Authority:
Enabel - Belgian Development Agency

Enabel

Funded By:

This Project Is Funded by

EUROPEAN UNION

Belgium
partner in development

Project Title:
Public services contract for "Participatory design and supervision of Public and Semi-Public spaces in East Jerusalem / Silwan neighborhood"

Reference No.: PZA170421T-10028

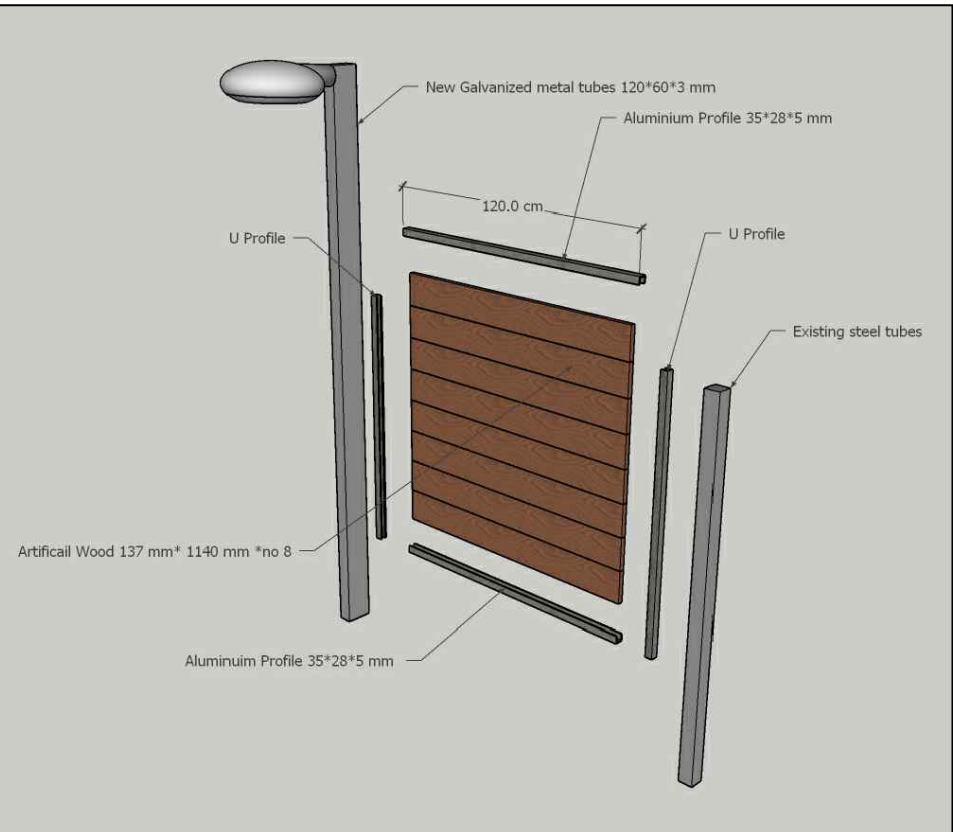
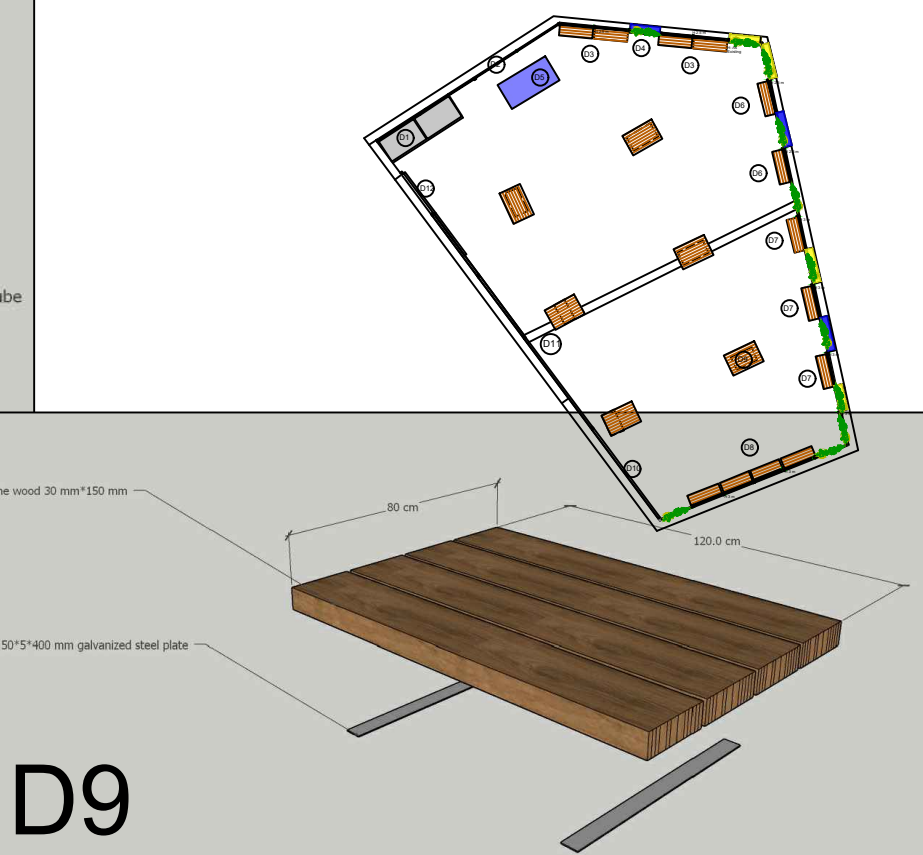
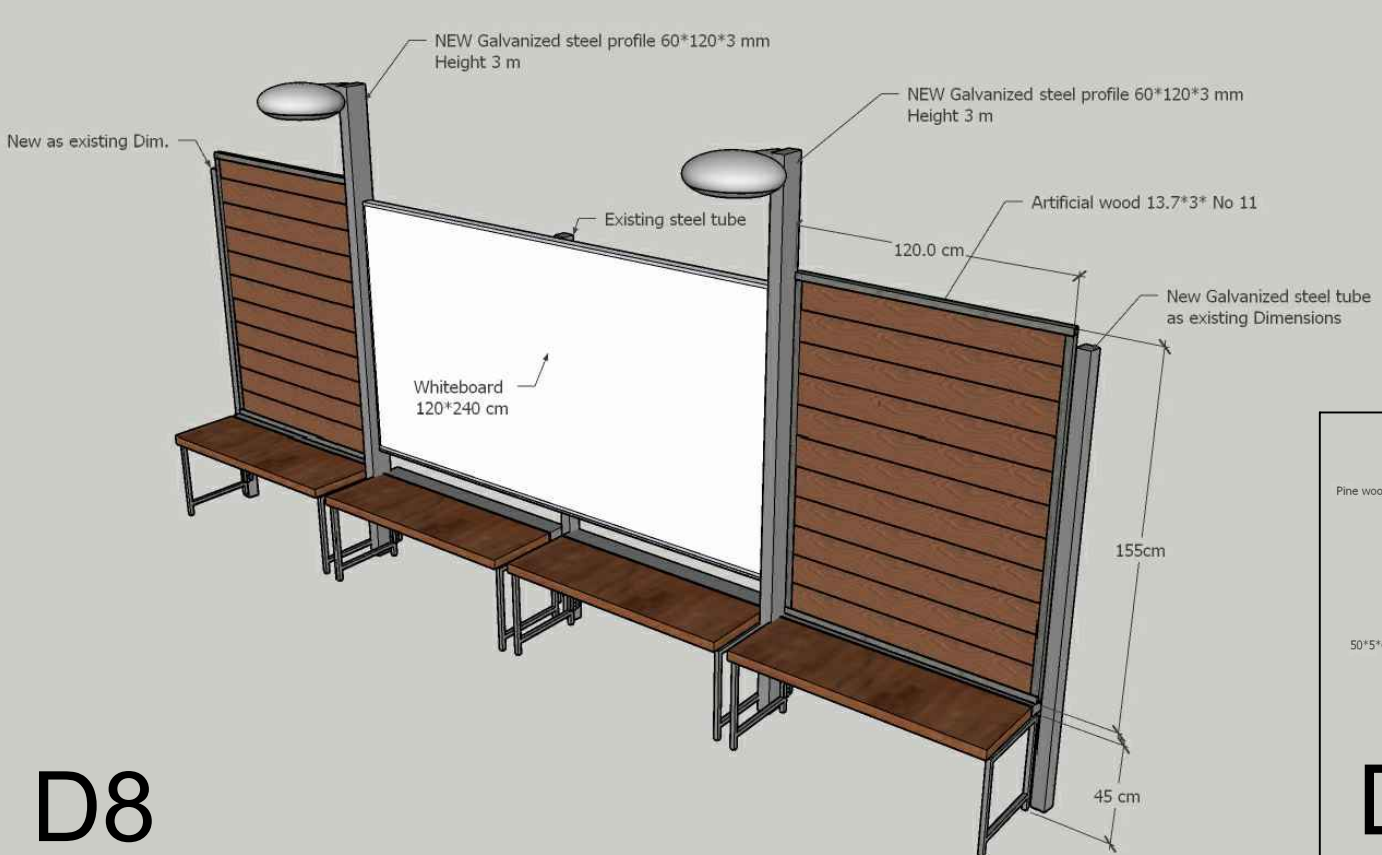
Designed by:

HOSH STUDIO
ARCHITECTURE & TOWN PLANNING

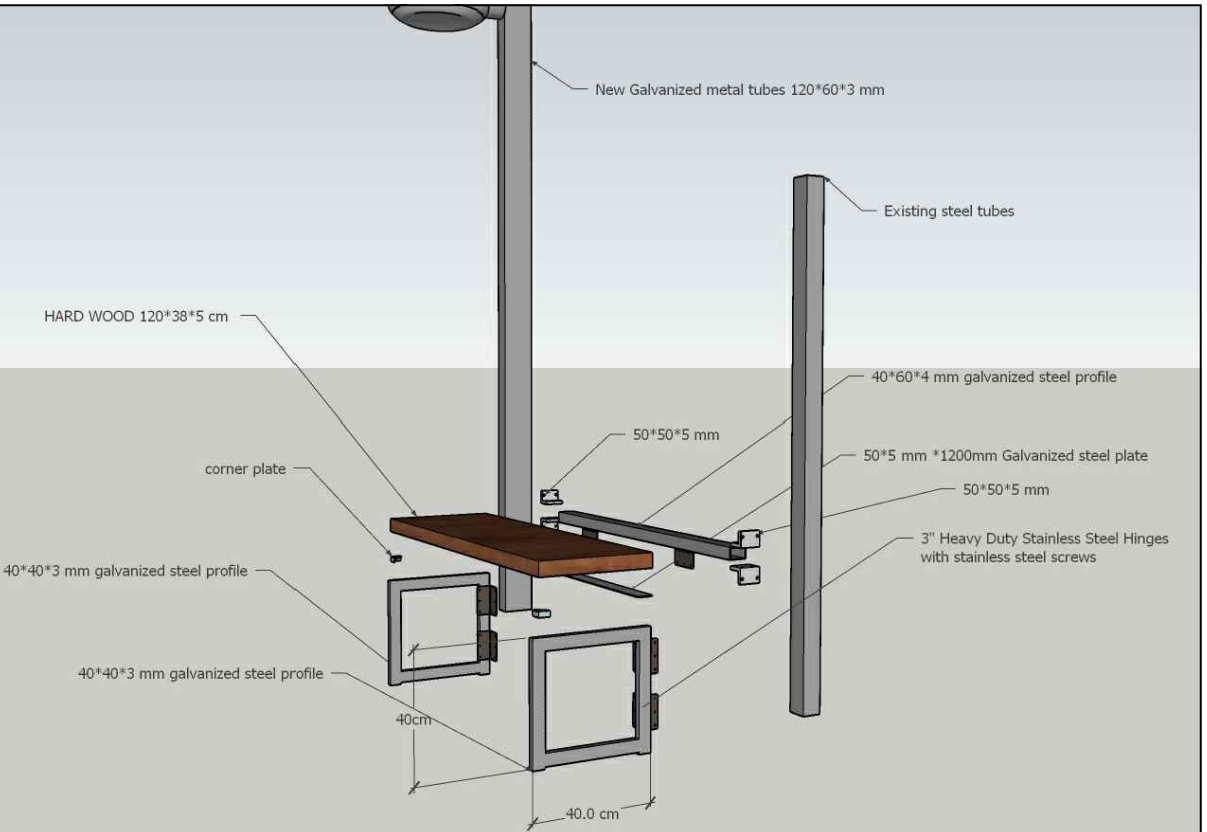
Jerusalem - Sheikh Jarrah- Tobler8
email: mr.wasimhija@gmail.com

Tel. 02-9948344/ 052-8327076
Fax: 02-9948344

Drawing Title	Details	Date: 28/3/2023 Scale: 1:100
Designed by:	Arch. Hiba Al Ayoubi	Drawing No:
Checked by:	Arch. Wasim Abu El-Hija	A10
Approved by:		
Coordinate Manager:		



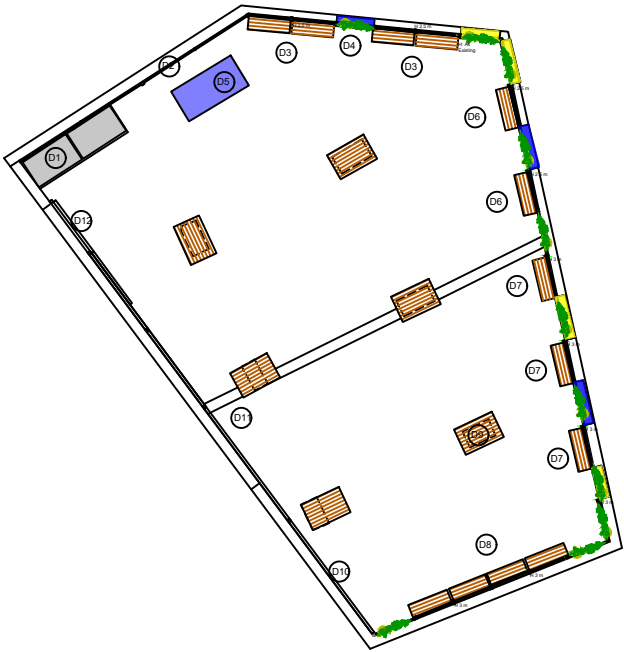
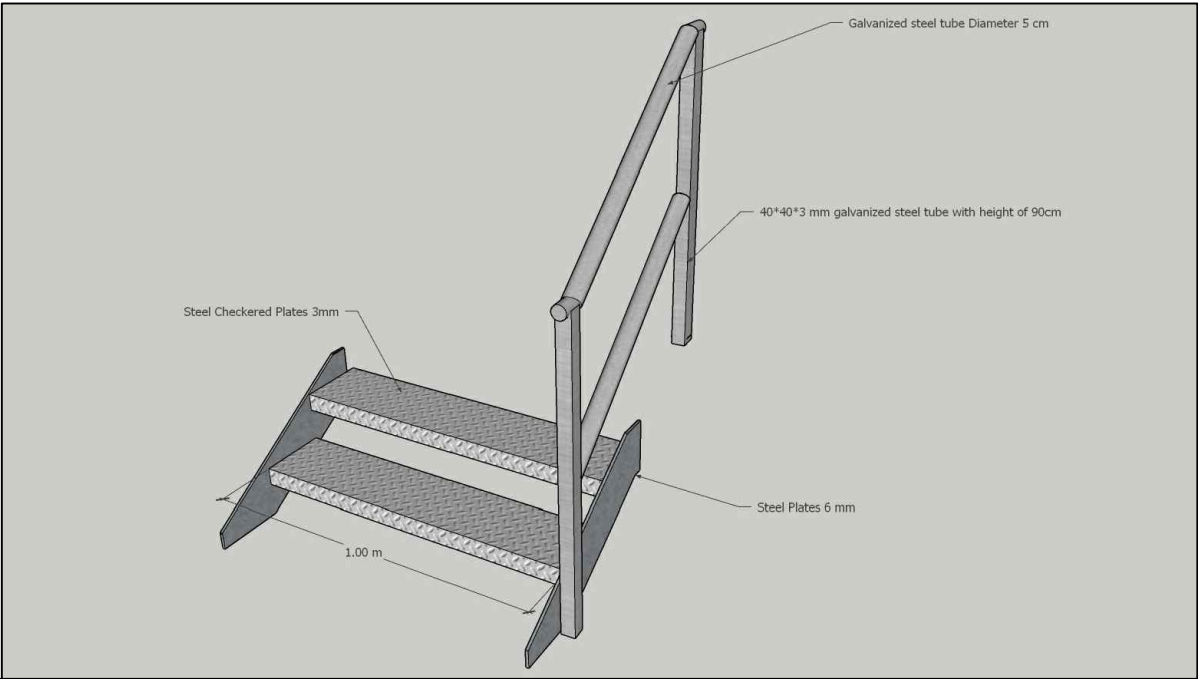
Detail of artificial wood fence



Detail of Folding Bench

D11

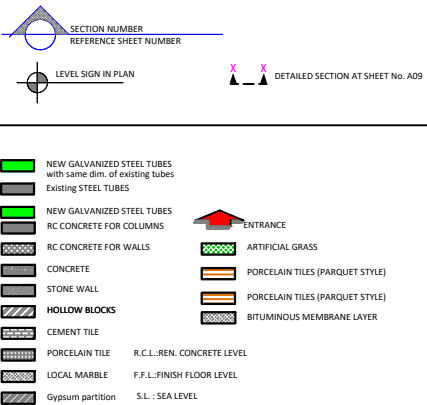
Checkers steps with handrail



Notes

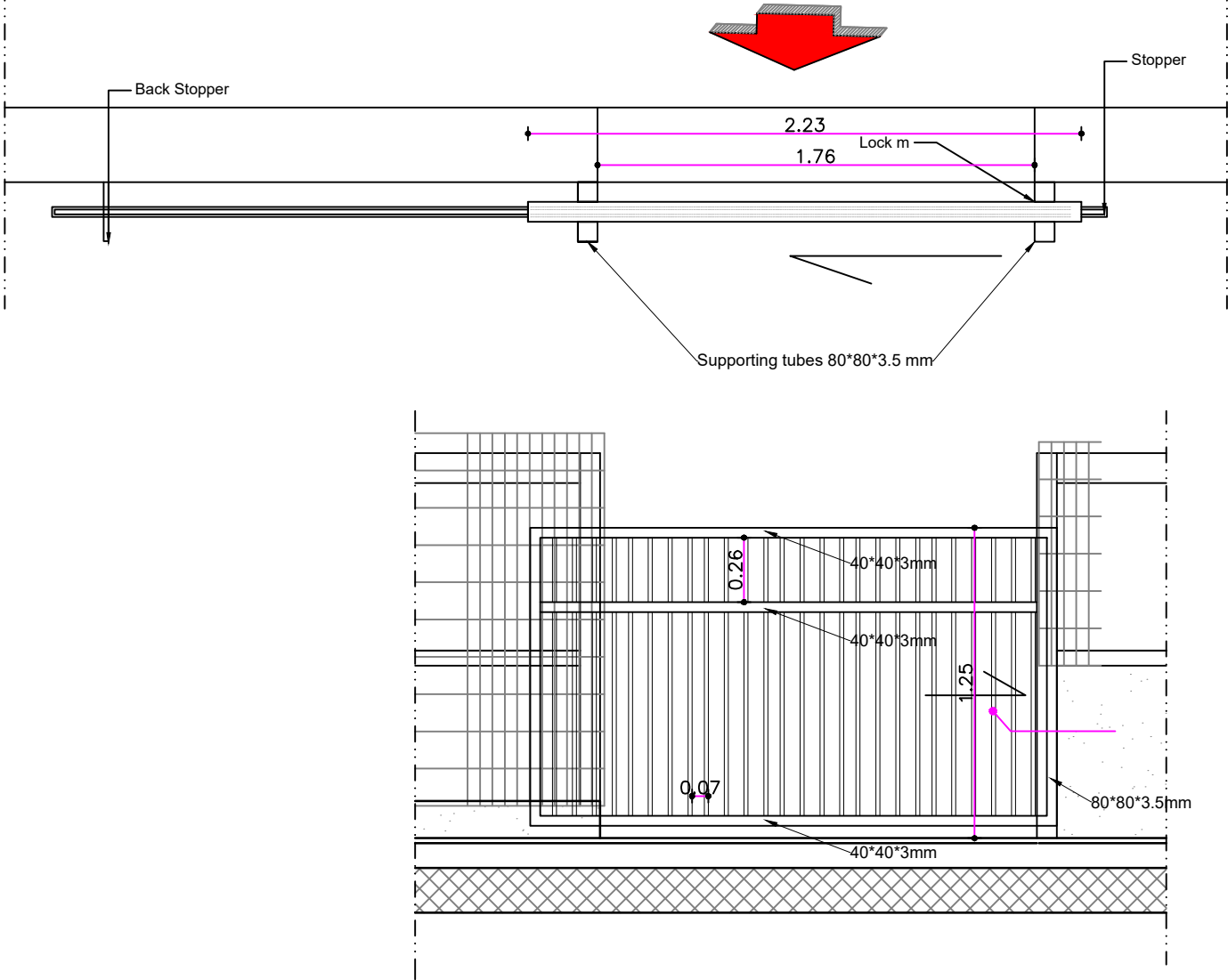
- (1) All Dimensions Are In M.
- (2) All Levels Are In Meter
- (3) Any Missing or Unclear Detail And All Fastening Systems For All Elements Shall be Approved by The Supervisor.

Legend:



D10

Maim Gate



REVISIONS

NO.	DRAWINGS	DATE
(1)		
(2)		
(3)		

Contracting Authority:

Enabel - Belgian Development Agency



Funded By:



Project Title:

Public services contract for "Participatory design and supervision of Public and Semi-Public spaces in East Jerusalem / Silwan neighborhood"

Reference No.: PZA170421T-10028

Designed by:



Jerusalem - Sheikh Jarrah- Tobler8
email: mr.wasimhija@gmail.com
Tel. 02-9948344/ 052-8327076
Fax: 02-9948344

Drawing Title

Details

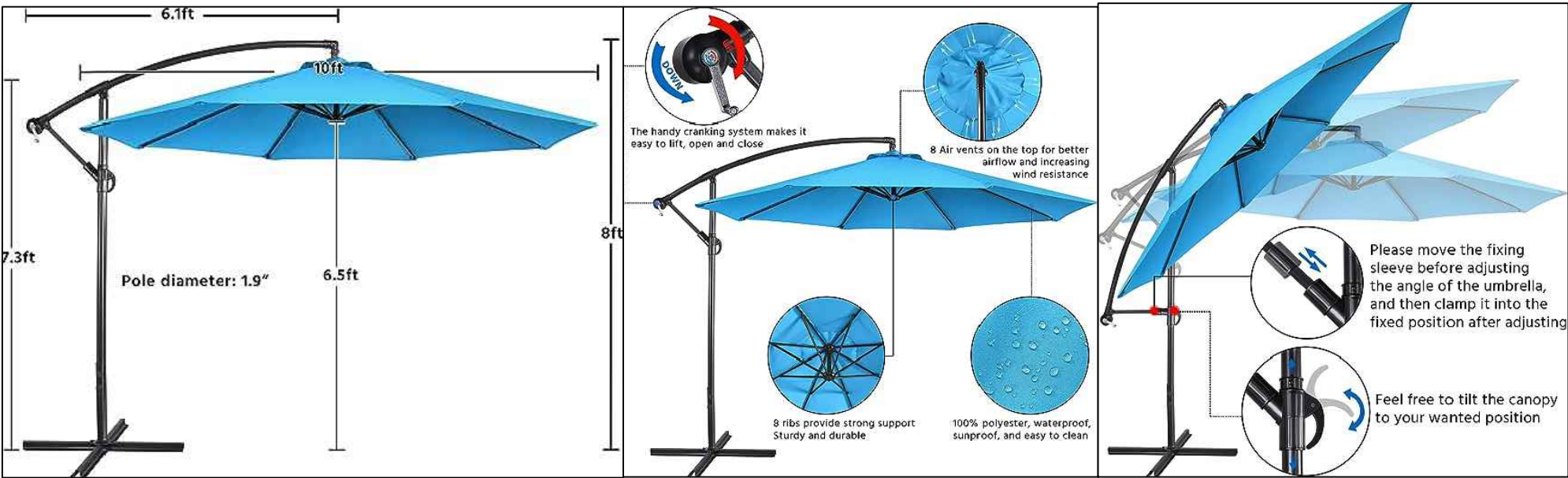
Designed by:
Checked by:
Approved by:
Coordinate Manager:

Arch. Hiba Al Ayoubi
Arch. Wasim Abu El-Hija

Date:
28/3/2023
Scale:
1:100

Drawing No:
A11

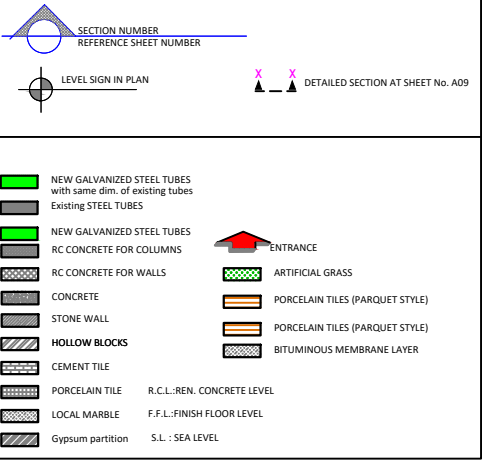
D10 3m diameter of Patio Offset Umbrella - Cantilever Hanging Outdoor Umbrellas w/UV Protection & 8 Ribs & Handy Crank



Notes

- (1) All Dimensions Are In M.
- (2) All Levels Are In Meter
- (3) Any Missing or Unclear Detail And All Fastening Systems For All Elements Shall be Approved by The Supervisor.

Legend:



REVISIONS

NO.	DRAWINGS	DATE
(1)		
(2)		
(3)		

Contracting Authority:

Enabel - Belgian Development Agency

Enabel

Funded By:



Project Title:

Public services contract for "Participatory design and supervision of Public and Semi-Public spaces in East Jerusalem / Silwan neighborhood"

Reference No.: PZA170421T-10028

Designed by:



Jerusalem - Sheikh Jarrah- Tobler8
email: mr.wasimhija@gmail.com
Tel. 02-9948344/ 052-8327076
Fax: 02-9948344

Drawing Title

Details

Designed by:
Checked by:
Approved by:
Coordinate Manager:

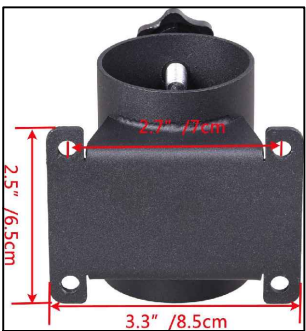
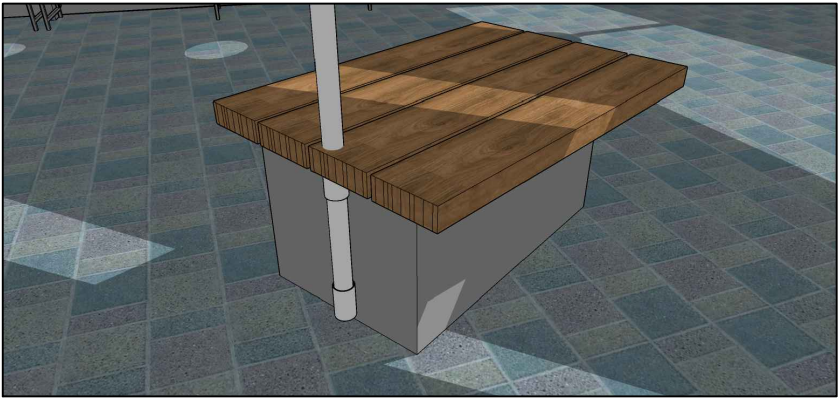
Arch. Hiba Al Ayoubi
Arch. Wasim Abu El-Hija

Date:
28/3/2023
Scale:
1:100

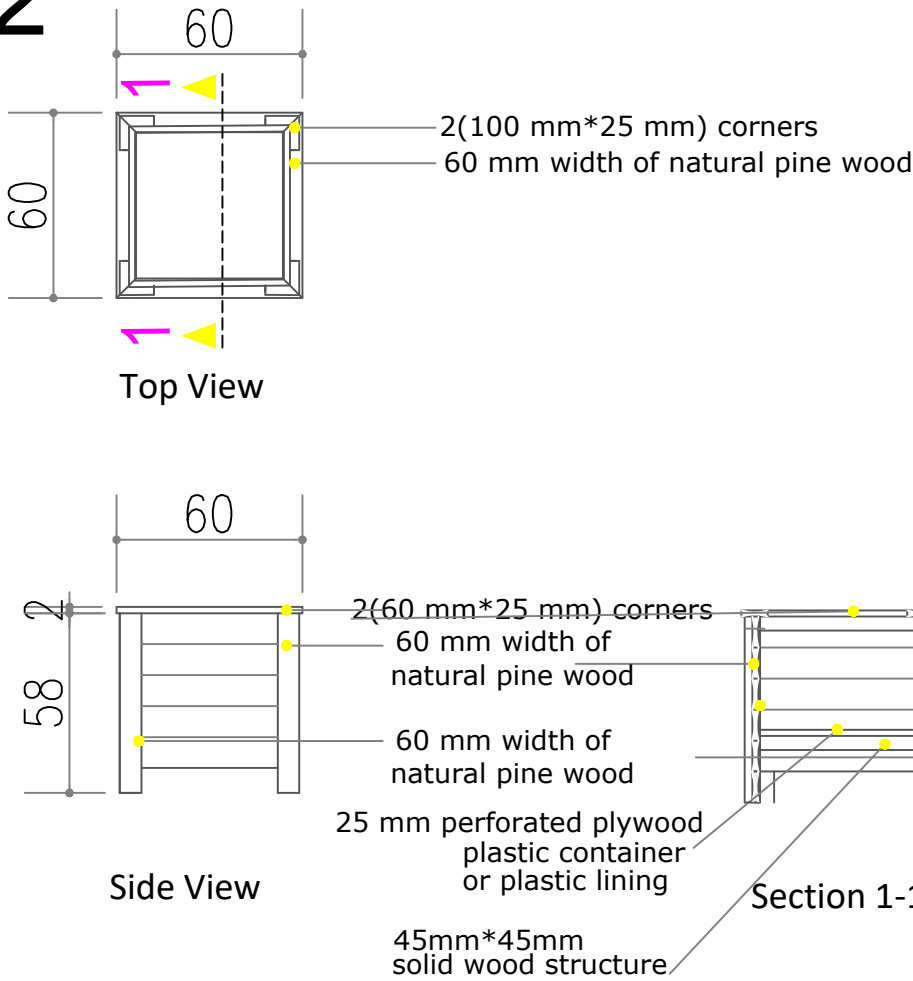
Drawing No:

A12

D11 Heavy Duty Patio Umbrella Holder, Patio Umbrella Stand Umbrella Clamp Mount Brack

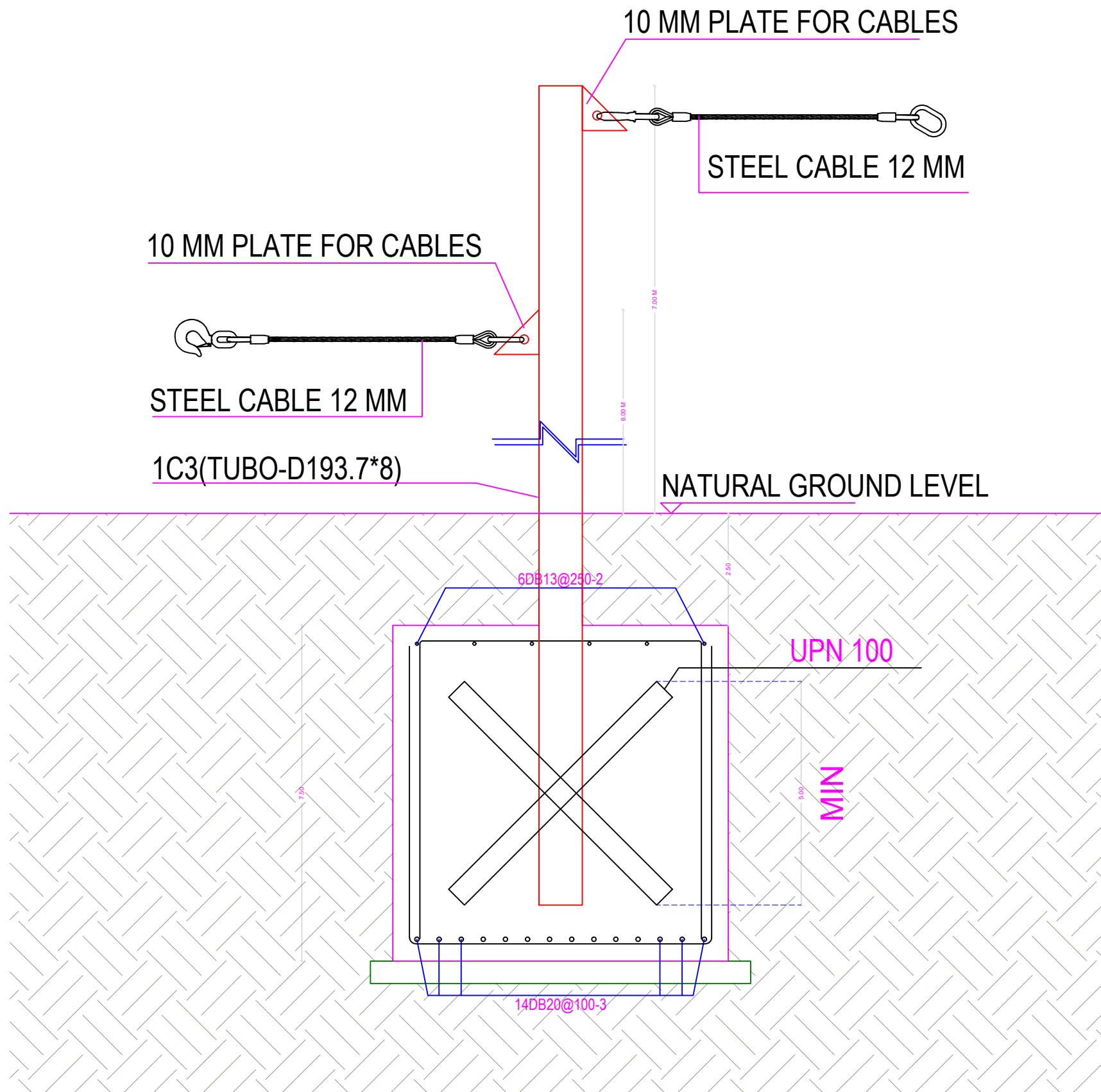


D12 Planter Details



2. Structural Drawings

S01	Structural Details
-----	--------------------



Notes

- (1) All Dimensions Are In M.
- (2) All Levels Are In Meter
- (3) Any Missing or Unclear Detail And All Fastening Systems For All Elements Shall be Approved by The Supervisor.

Legend:

	SECTION NUMBER
	REFERENCE SHEET NUMBER
	LEVEL SIGN IN PLAN
	DETAILED SECTION AT SHEET No. A09
	NEW GALVANIZED STEEL TUBES with same dim. of existing tubes
	EXISTING STEEL TUBES
	NEW GALVANIZED STEEL TUBES
	RC CONCRETE FOR COLUMNS
	RC CONCRETE FOR WALLS
	CONCRETE
	STONE WALL
	HOLLOW BLOCKS
	CEMENT TILE
	PORCELAIN TILE
	LOCAL MARBLE
	Gypsum partition
	ENTRANCE
	ARTIFICIAL GRASS
	PORCELAIN TILES (PARQUET STYLE)
	PORCELAIN TILES (PARQUET STYLE)
	BITUMINOUS MEMBRANE LAYER
	R.C.L.-REN. CONCRETE LEVEL
	F.F.L.-FINISH FLOOR LEVEL
	S.L.-SEA LEVEL

REVISIONS

NO.	DRAWINGS	DATE
(1)		
(2)		
(3)		

Contracting Authority:

Enabel - Belgian Development Agency



Funded By:



Project Title:

Public services contract for "Participatory design and supervision of Public and Semi-Public spaces in East Jerusalem / Silwan neighborhood"

Reference No.: PZA170421T-10028

Designed by:



Jerusalem - Sheikh Jarrah- Tobler8
email: mr.wasimhija@gmail.com

Tel. 02-9948344/ 052-8327076
Fax: 02-9948344

Drawing Title

Structural Details

Date: 22/6/2023

Scale: 1:20

Designed by:

Eng. Ahmad Ayyad

Drawing No:

Checked by:

Arch. Wasim Abu El-Hija

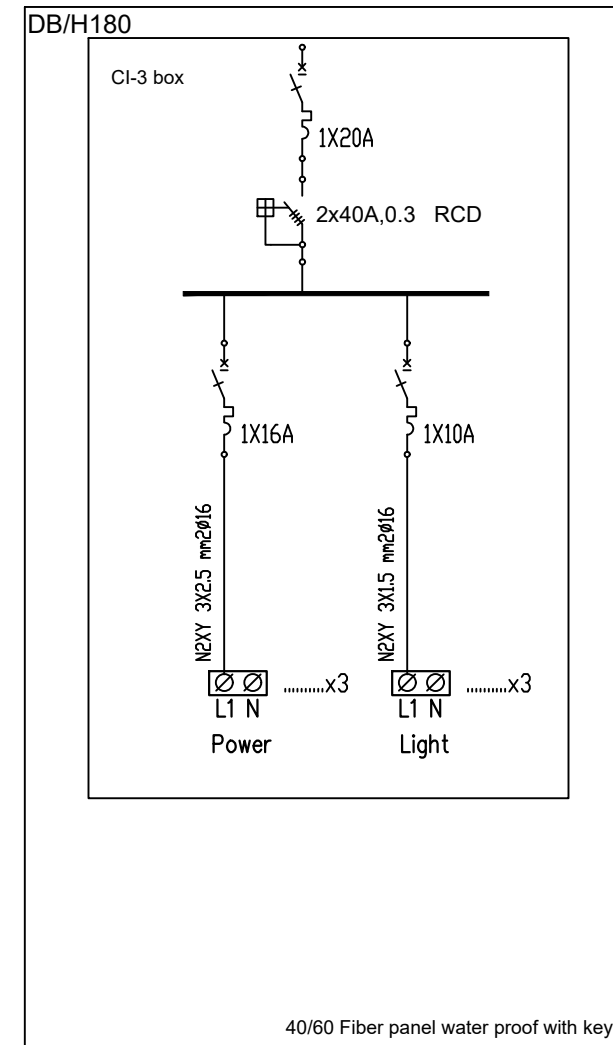
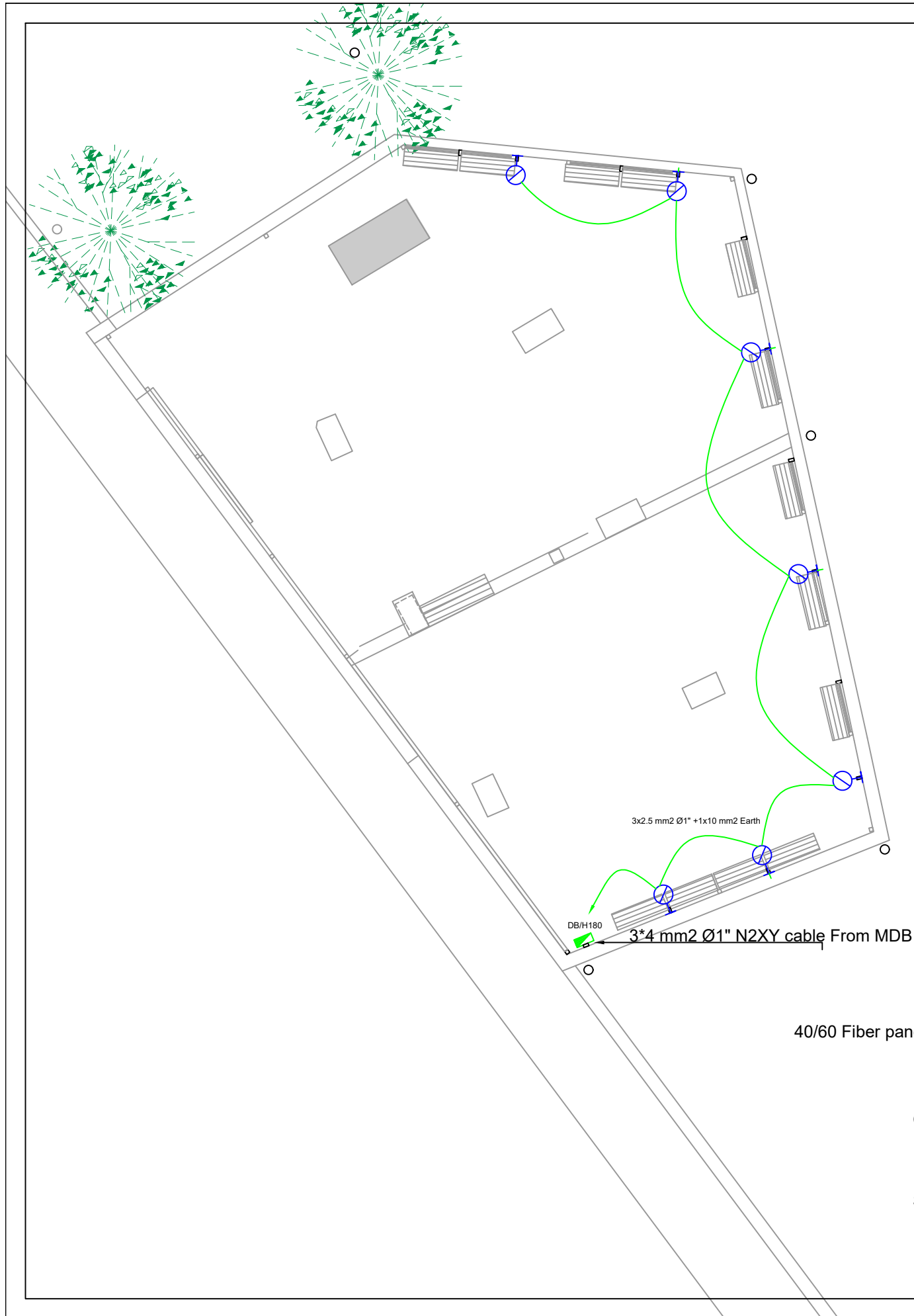
S01

Approved by:

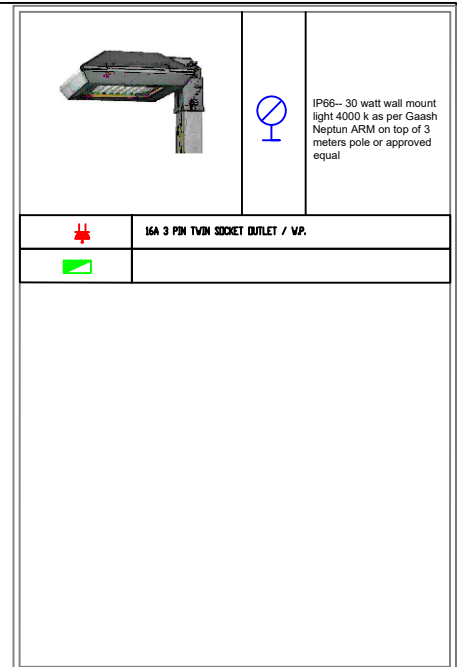
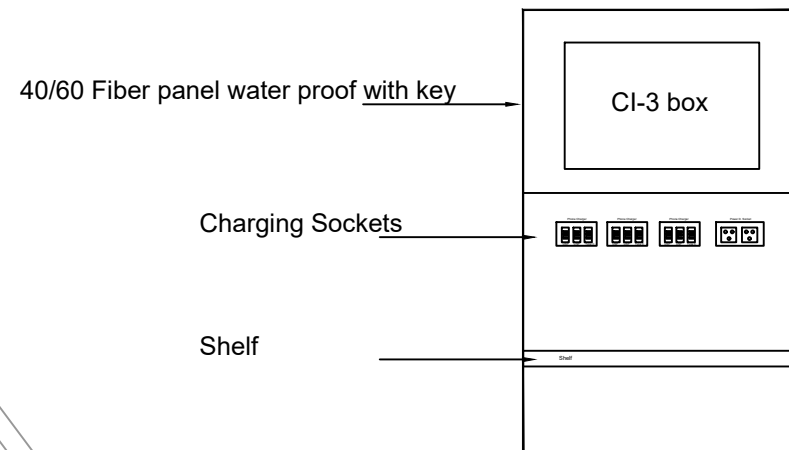
Coordinate Manager:

2. Electrical Drawings

E01	Electrical Plan
-----	-----------------



Electrical Panel Contains
 CI-3 box, 1x20A CB, 2x40, 0.03A Type A RCD, 3x(1x16A)+3(1X10A) MCB
 40/60 Fiber panel water proof with key



REVISIONS		
NO.	DRAWINGS	DATE
(1)		
(2)		
(3)		

Contracting Authority:
 Enabel - Belgian Development Agency

Funded By:

This Project is Funded by
 EUROPEAN UNION

Belgium
 partner in development

Project Title:
 Public services contract for "Participatory design and supervision of Public and Semi-Public spaces in East Jerusalem / Silwan neighborhood"

Reference No.: PZA170421T-10028

Designed by:

HOSH STUDIO
 ARCHITECTURE & TOWN PLANNING

Jerusalem - Sheikh Jarrah- Tobler8
 email: m.r.wasimhija@gmail.com

Tel. 02-9948344/ 052-8327076
 Fax: 02-9948344

Drawing Title	Electrical Plan	Date: 15/6/2023 Scale: 1:100
Designed by:	Eng. Midhat Sharif	Drawing No: E01
Checked by:	Arch. Wasim Abu El-Hija	
Approved by:		
Coordinate Manager:		