

Funded by:

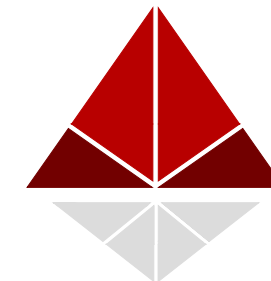


IN COLLABORATION WITH:

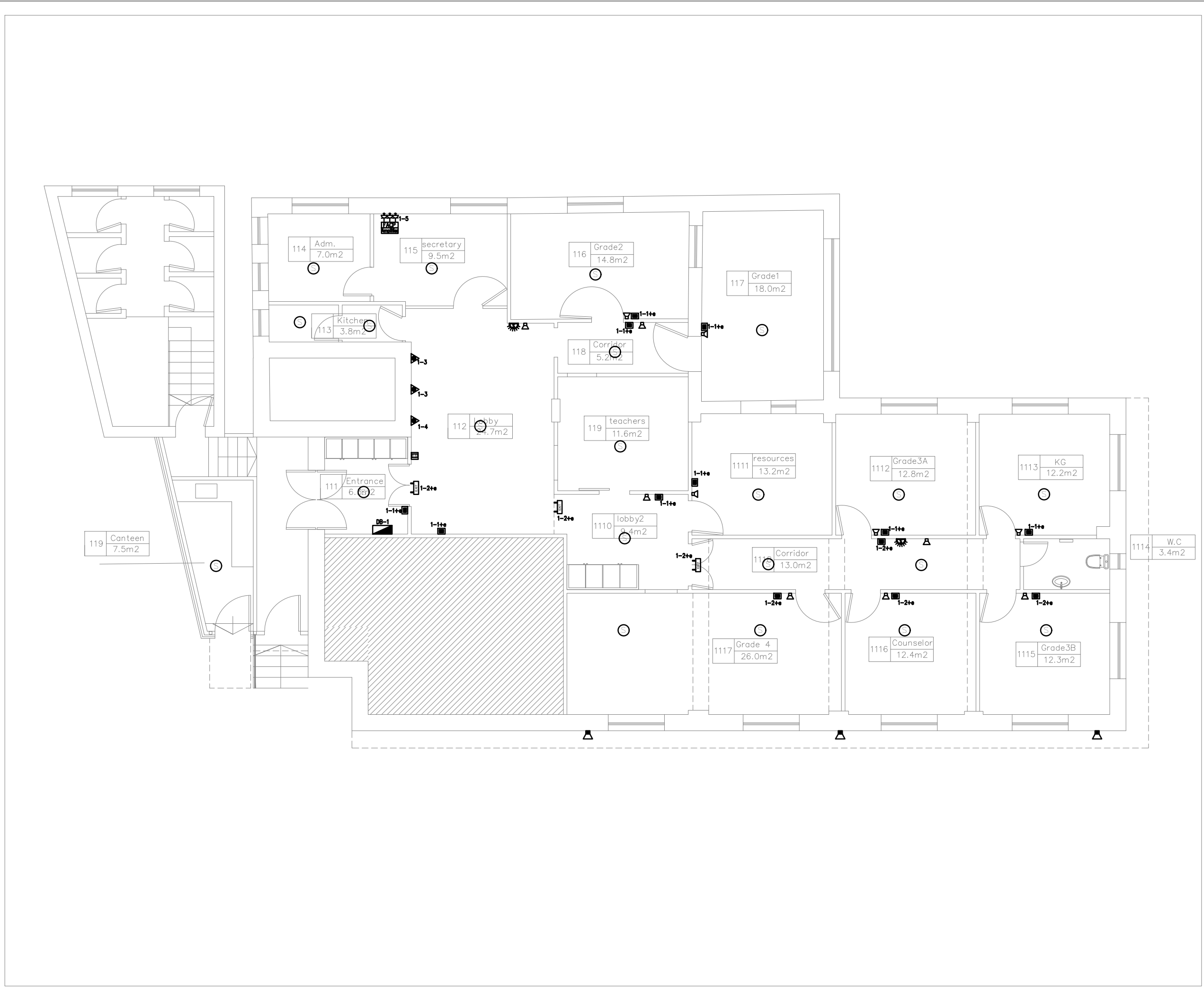


ELECTRICAL DRAWINGS

Prepared By:



ATELIER ARLETTE
ARCHITECT & CONSULTANT
Beit Hanina - Jerusalem
tel. 025855785 -
mob.0525663968



Notes

- (1) All Dimensions Are In Cm.
- (2) All Levels Are In Meter
- (3) Any Missing or Unclear Detail And All Fastening Systems For All Elements Shall be Approved by The Supervisor.

Legend:

	2 POLE SWITCH WITH INDICATOR LAMP
	Single Switch / 2 WAY SWITCH h=180
	Push Button
	14W IP66 FETAYA "RELI"
	120x30 2x28W Parabolic Light Fixture (Pentafight)
	12W Eco Led2 from Disano
	14W IP66 FETAYA "LION"
	1x28W T5 Light Fixture
	2x28W T5 Water Proof Light Fixture
	Exit Sign Light Fixture
	Emergency LED Light Recessed /Surface mount
	5W IP44 Spot Light for Toilets
	Wall Mount Light Fixture
	Wall Mount Light Fixture IP44
	16A Power Socket
	16A Water Proof Power Socket
	10A AC Power Socket
	TELEPHONE SOCKET
	Computer SOCKET
	TV SOCKET
	Thermostat Point
	Internal Siren for Fire System
	SMOKE/HEAT DETECTOR ON THE CEILING
	Break Glass Unit
	NISKO Office Box 6 modules (4 sockets, 2 com.)
	Recessed Loud Speaker for Sound System
	Wall Mounted Speaker for Sound System/Outdoor
	Ventilation Point
	Distribution Panel
	Low Voltage Panel
	Power Sockets for Sink sensor
	Projector Point
	16A Tripple Socket
	Mushroom Head Emergency Push Button
	Connection Box
	INDOOR Dome CAMERA



JERUSALEM DIRECTORATE OF EDUCATION
Waqf Department

Funded by:



IN COLLABORATION WITH:



Project :
Al-Dawha school rehabilitation

School:
AL-DOHA SCHOOL
Wadi Aljoz / Jerusalem

Tender No.:

Designed by:
ATELIER ARLETTE
ARCHITECT & CONSULTANT

Beit Hanina - Jerusalem Tel. 025855785 - mob.0525663968
archletty@yahoo.com Fax. 0737251495

Drawing Title	Electrical Plan	Date: 30-04-20 Scale: 1:100
Designed by: NAME		Drawing No:
Checked by: NAME		E01
Approved by: NAME		
Coordinate Manager: NAME		