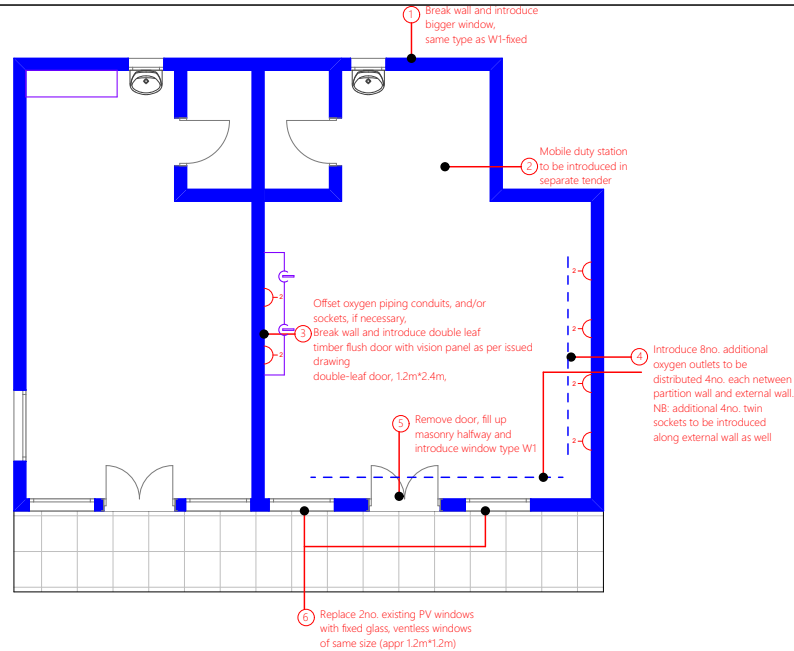
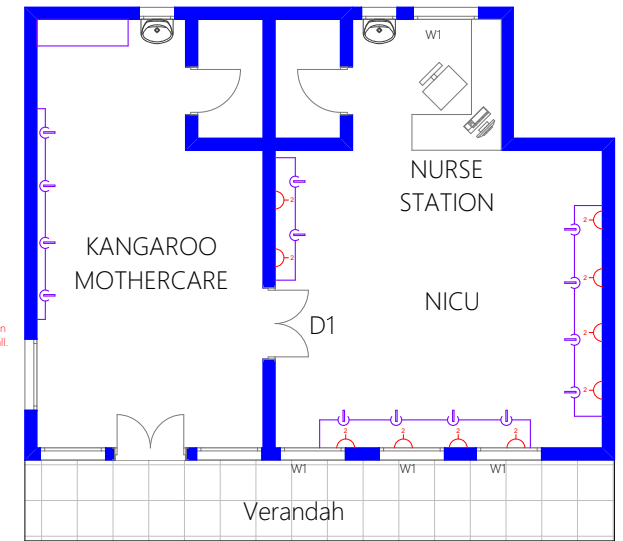


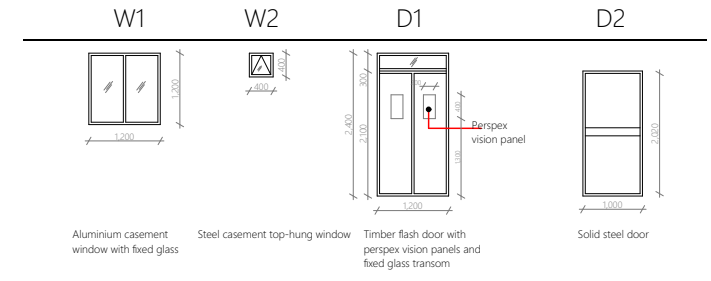
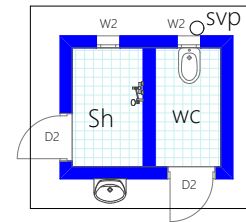
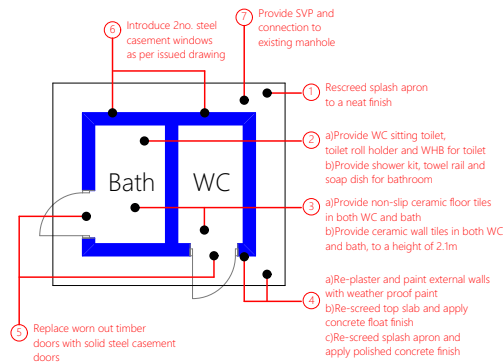
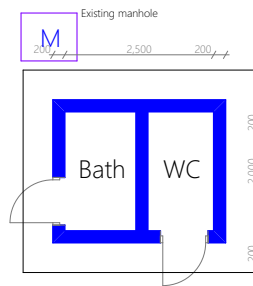
As built drawing
NTS



Interventions
NTS



Final layout
NTS



Date
August 2024

WeCare project, Result 3 - Infrastructure

Health facility

Bugembe HCIV

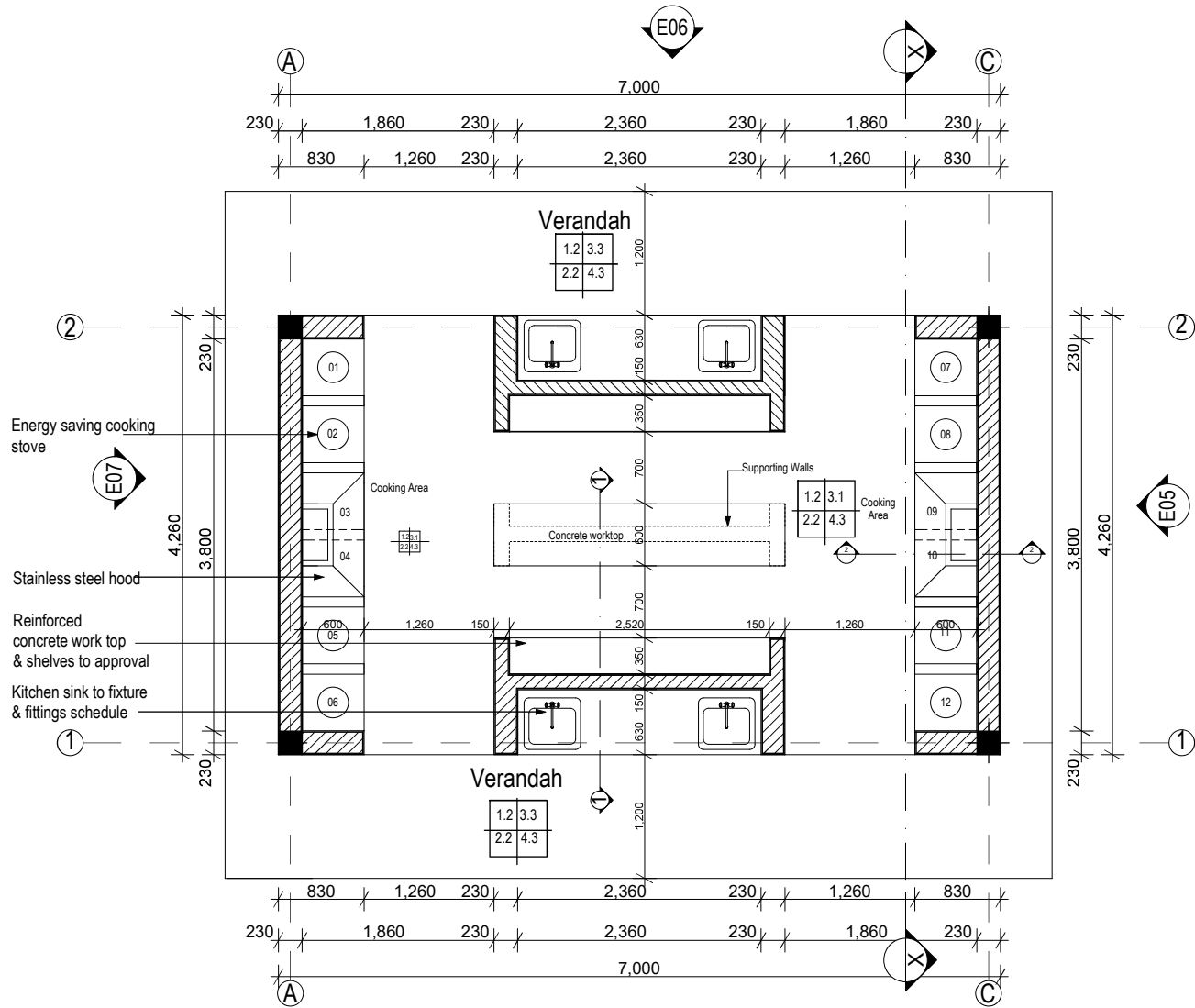
Title

Proposed alterations to NICU, piped oxygen, sanitary blocks, kitchen block renovation of NICU toilet/bath, walkway



Enabel

Infrastructure Unit
5th Floor, Legacy Towers
Wing A



Ground Floor Plan
Scale 1:50

Project Title:
**DESIGN STANDARDS FOR
HEALTH FACILITIES**



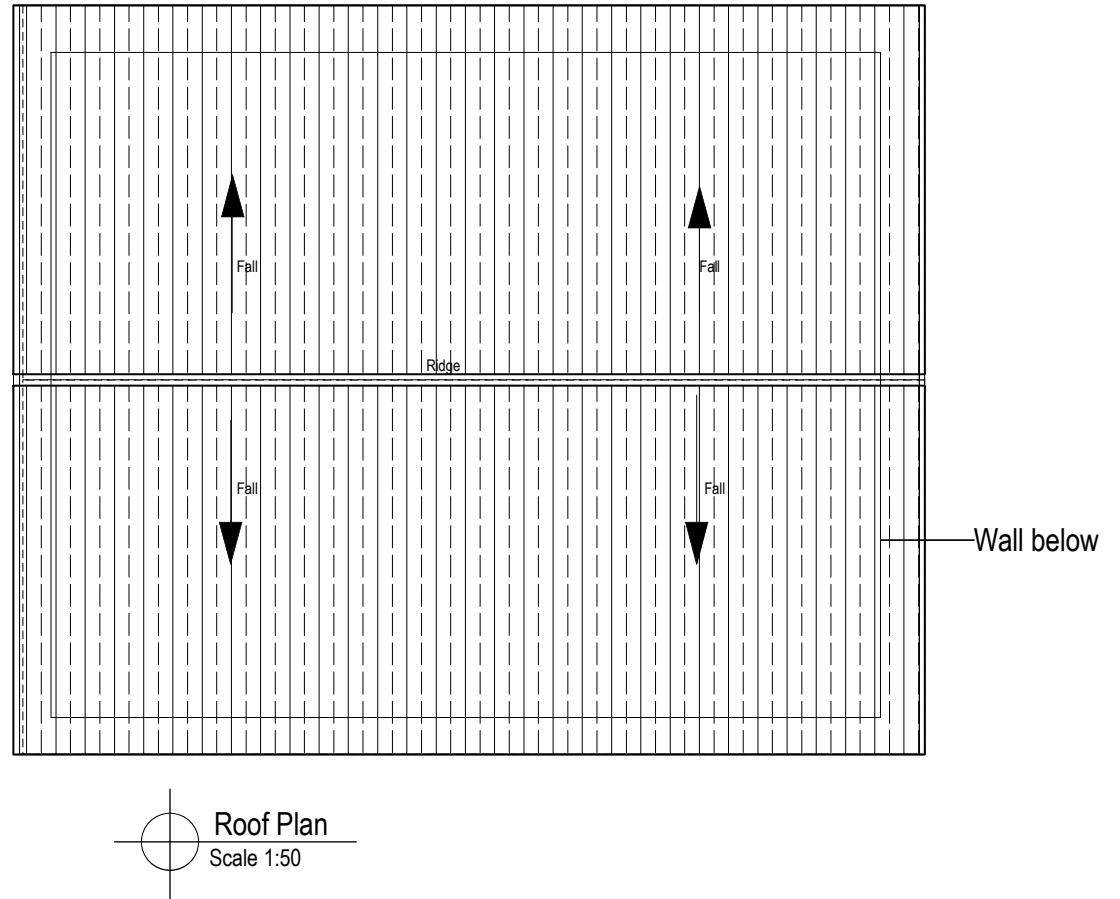
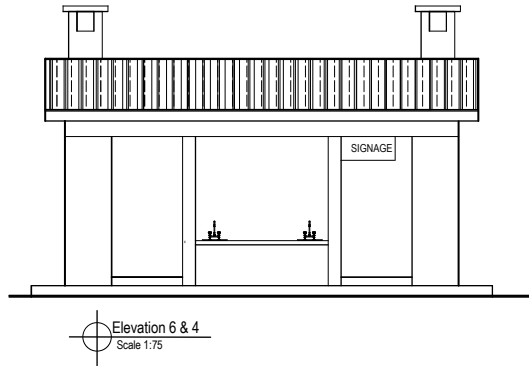
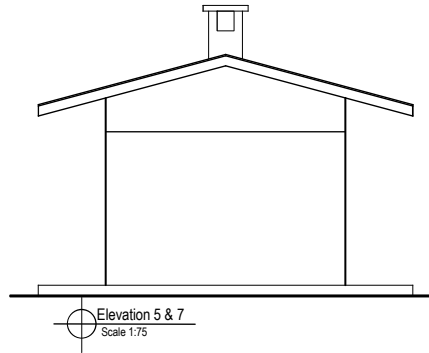
CONSULTANTS:	
Project Mgrs:	Creations Consult (A) Ltd.
Architects:	EDON Consultants Int.
Quantity Surv:	DEC Consultants
Struc. Eng:	Sampar Consulting Engineers
M&E Eng:	M&E Associates Ltd.
Environ. Eng:	Air Water Earth


GENERAL NOTES:	
1. All Dimensions are in millimeters unless stated otherwise.	
2. Do not scale the drawings. In case of any discrepancy, consult the Architect.	
3. All External Walls are 230mm, including plaster.	
4. Refer to notes for finishes and details.	
5. These Drawings are to be read in conjunction with other specialists drawings.	

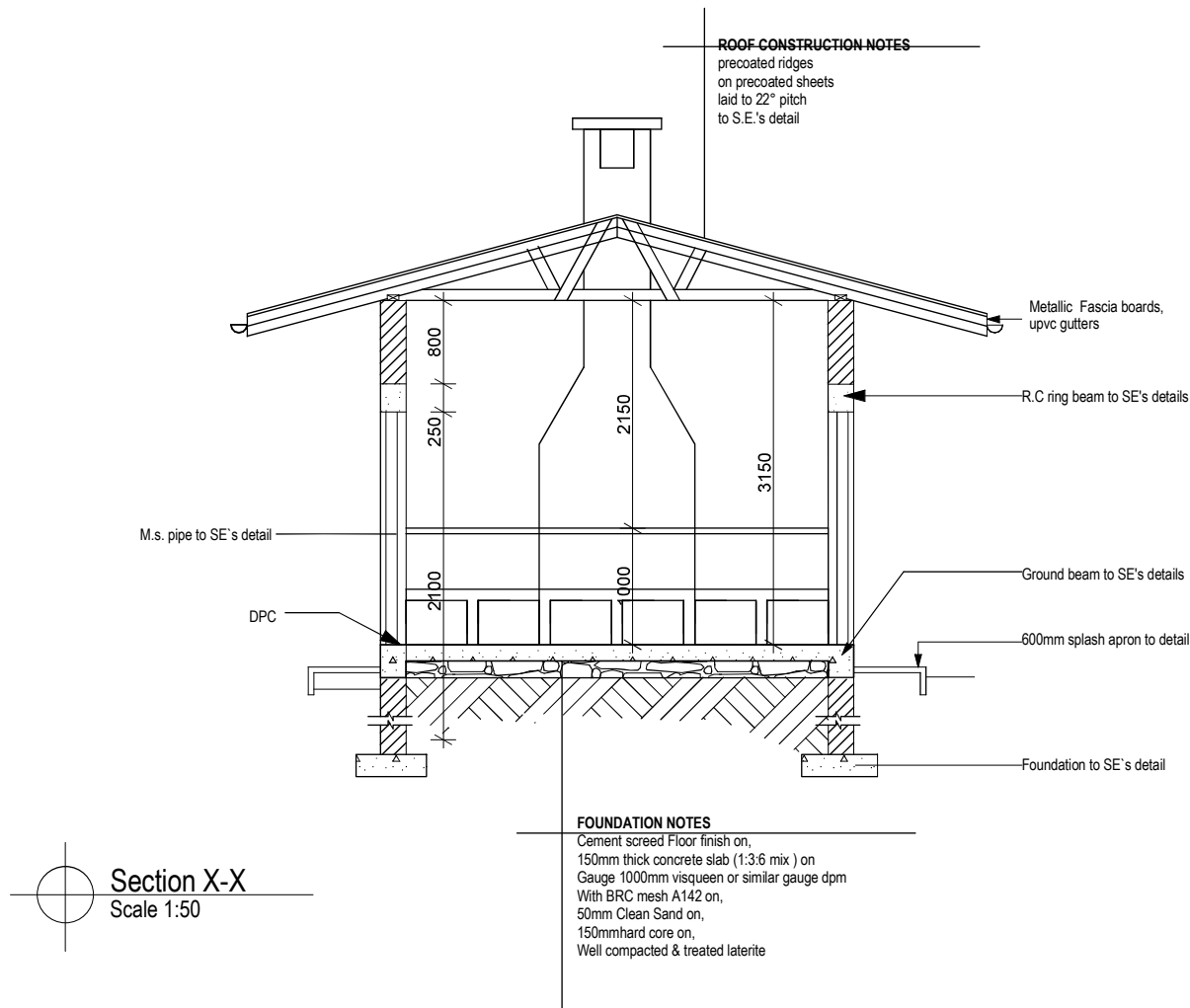
LEGEND:					
FINISHES:		1.0 FLOOR	2.0 SKIRTING	3.0 WALLS	4.0 CEILING
FLOOR		1.1 Unpolished Terrazzo	2.1 Unpolished Terrazzo	3.1 Silk Vinyl Paint	4.1 Expanded Metal lathe
		1.2 Polished Terrazzo	2.2 Polished Terrazzo	3.2 Glazed ceramic Tiles	4.2 Gypsum plaster board
		1.3 Cement Screed	2.3 Cement Screed	3.3 Roughcast & weather guard paint (External)	4.3 Open to roof
WALLS:					
		New Walls			
		Existing Walls to be kept			
		Existing Walls to be demolished			

REVISION NOTES:			
No.	Date	Particulars	Initials

Drawing Name: Attendants' Kitchen: Ground Floor Plan	
Drawn by: NJEm	Date: Nov 2013
Checked by: Matoya Maroria	Date: Nov 2013
Layout ID: ARC/MoH/1201	Scale:1:50



<div>Project Title:</div> <div>DESIGN STANDARDS FOR HEALTH FACILITIES</div> <div>Client:</div> <div><div>REPUBLIC OF UGANDA MINISTRY OF HEALTH</div></div>	CONSULTANTS:		GENERAL NOTES:		LEGEND:				REVISION NOTES:				Drawing Name:	
	Project Mgrs:	Creations Consult (A) Ltd.	<div>1. All Dimensions are in millimeters unless stated otherwise.</div> <div>2. Do not scale the drawings. In case of any discrepancy, consult the Architect.</div> <div>3. All External Walls are 230mm, including plaster.</div> <div>4. Refer to notes for finishes and details.</div> <div>5. These Drawings are to be read in conjunction with other specialists drawings.</div>	<div>FINISHES:</div> <div><div><div>FLOOR</div><div>WALL</div><div>SKIRTING</div><div>CEILING</div></div><div><div>1.0</div><div>3.0</div><div>2.0</div><div>4.0</div></div></div> <div>1.1 Unpolished Terrazzo</div> <div>2.1 Unpolished Terrazzo</div> <div>3.1 Silk Vinyl Paint</div> <div>4.1 Expanded Metal lathe</div> <div>1.2 Polished Terrazzo</div> <div>2.2 Polished Terrazzo</div> <div>3.2 Glazed ceramic Tiles</div> <div>4.2 Gypsum plaster board</div> <div>1.3 Cement Screed</div> <div>2.3 Cement Screed</div> <div>3.3 Roughcast & weather guard paint (External)</div> <div>4.3 Open to roof</div>	<div>1.0 FLOOR</div> <div>2.0 SKIRTING</div> <div>3.0 WALLS</div> <div>4.0 CEILING</div>	<div>1.1 Unpolished Terrazzo</div> <div>2.1 Unpolished Terrazzo</div> <div>3.1 Silk Vinyl Paint</div> <div>4.1 Expanded Metal lathe</div>	<div>1.2 Polished Terrazzo</div> <div>2.2 Polished Terrazzo</div> <div>3.2 Glazed ceramic Tiles</div> <div>4.2 Gypsum plaster board</div>	<div>1.3 Cement Screed</div> <div>2.3 Cement Screed</div> <div>3.3 Roughcast & weather guard paint (External)</div> <div>4.3 Open to roof</div>	No.	Date	Particulars	Initials	Attendants' Kitchen: Elevations & Roof Plan	
	Architects:	EDON Consultants Int.							Drawn by:		Date:			
	Quantity Surv:	DEC Consultants							NJEm		Nov 2013			
	Struc. Eng:	Sampar Consulting Engineers							Checked by:		Date:			
	M&E Eng:	M&E Associates Ltd.	Matoya Maroria		Nov 2013									
Environ. Eng:	Air Water Earth	Layout ID:		Scale:1:50, 1:100										
ARC/MoH/1203														



Project Title:
**DESIGN STANDARDS FOR
HEALTH FACILITIES**



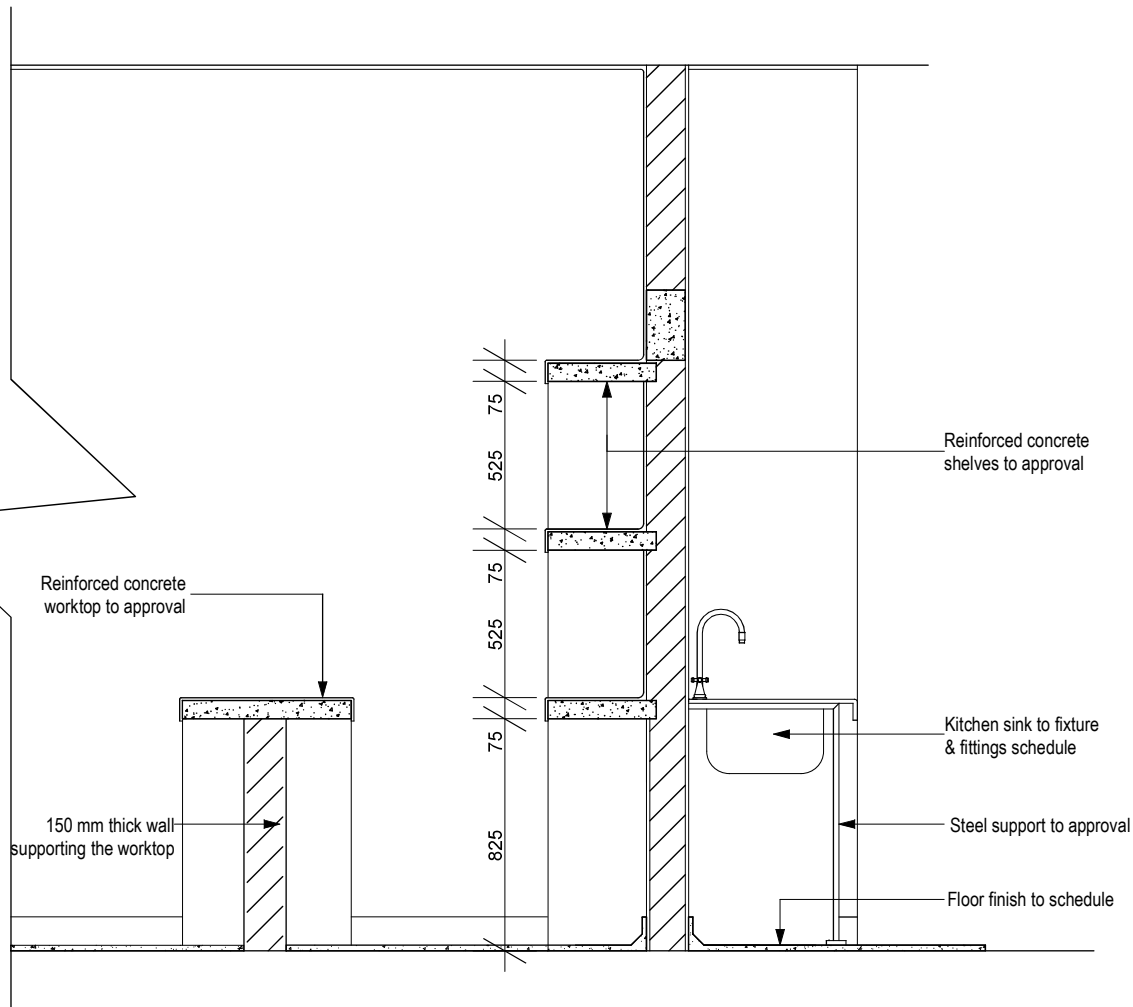
CONSULTANTS:	
Project Mgrs:	Creations Consult (A) Ltd.
Architects:	EDON Consultants Int.
Quantity Surv:	DEC Consultants
Struc. Eng:	Sampar Consulting Engineers
M&E Eng:	M&E Associates Ltd.
Environ. Eng:	Air Water Earth

GENERAL NOTES:	
1. All Dimensions are in millimeters unless stated otherwise.	
2. Do not scale the drawings. In case of any discrepancy, consult the Architect.	
3. All External Walls are 230mm, including plaster.	
4. Refer to notes for finishes and details.	
5. These Drawings are to be read in conjunction with other specialists drawings.	

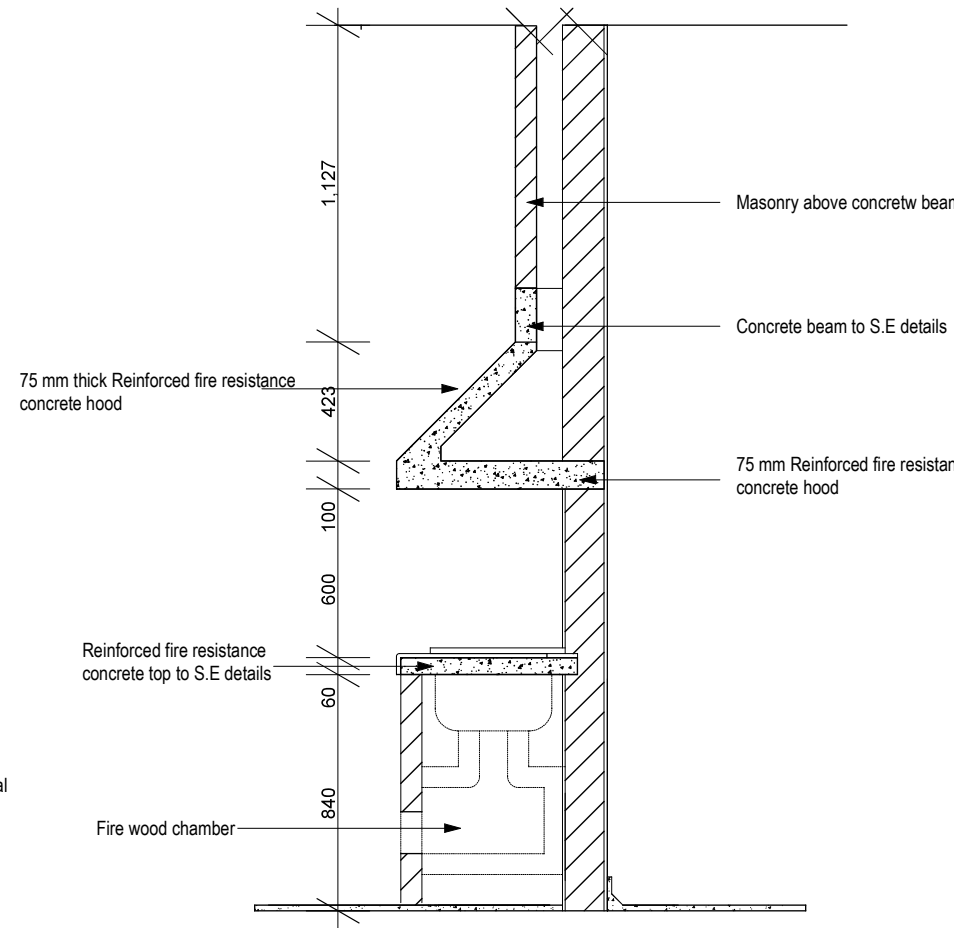
LEGEND:					
FINISHES:		1.0 FLOOR	2.0 SKIRTING	3.0 WALLS	4.0 CEILING
<div><div>DOOR</div><div><div>1.0</div><div>3.0</div><div>2.0</div><div>4.0</div></div><div>WALL</div><div>SKIRTING</div><div>CEILING</div></div>	1.1 Unpolished Terrazzo	2.1 Unpolished Terrazzo	3.1 Silk Vinyl Paint	4.1 Expanded Metal lathe	
	1.2 Polished Terrazzo	2.2 Polished Terrazzo	3.2 Glazed ceramic Tiles	4.2 Gypsum plaster board	
	1.3 Cement Screed	2.3 Cement Screed	3.3 Roughcast & weather guard paint (External)	4.3 Open to roof	
WALLS:					
				New Walls	
				Existing Walls to be kept	
				Existing Walls to be demolished	

REVISION NOTES:			
No.	Date	Particulars	Initials

Drawing Name: Attendants' Kitchen: Section	
Drawn by: NJEm	Date: Nov 2013
Checked by: Matoya Maroria	Date: Nov 2013
Layout ID: ARC/MoH/1202	Scale: 1:50



Section 1-1
Scale 1:20



Section 2-2
Scale 1:20

Project Title:
**DESIGN STANDARDS FOR
HEALTH FACILITIES**

Client:



CONSULTANTS:	
Project Mgrs:	Creations Consult (A) Ltd.
Architects:	EDON Consultants Int.
Quantity Surv:	DEC Consultants
Struc. Eng:	Sampar Consulting Engineers
M&E Eng:	M&E Associates Ltd.
Environ. Eng:	Air Water Earth

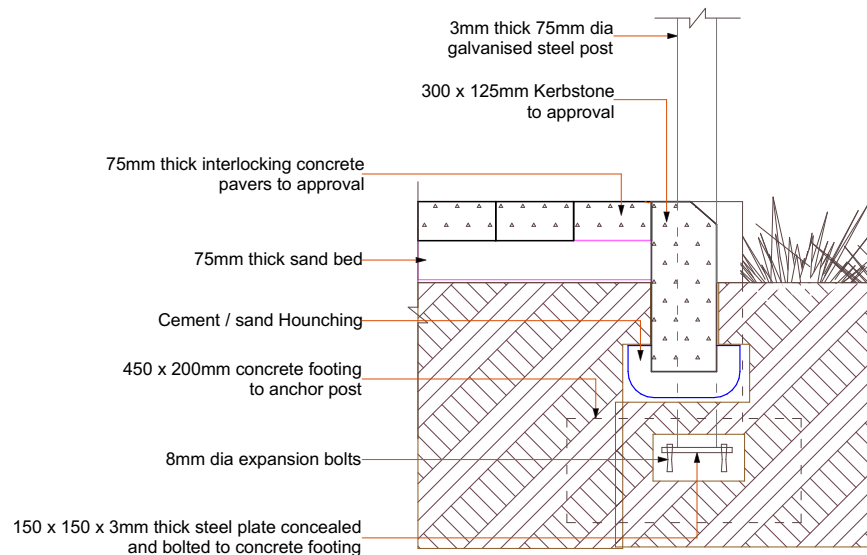
GENERAL NOTES:	
1. All Dimensions are in millimeters unless stated otherwise.	
2. Do not scale the drawings. In case of any discrepancy, consult the Architect.	
3. All External Walls are 230mm, including plaster.	
4. Refer to notes for finishes and details.	
5. These Drawings are to be read in conjunction with other specialists drawings.	

LEGEND:					
FINISHES:		1.0 FLOOR	2.0 SKIRTING	3.0 WALLS	4.0 CEILING
FLOOR	WALL	1.1 Unpolished Terrazzo	2.1 Unpolished Terrazzo	3.1 Silk Vinyl Paint	4.1 Expanded Metal lath
		1.2 Polished Terrazzo	2.2 Polished Terrazzo	3.2 Glazed ceramic Tiles	4.2 Gypsum plaster board
		1.3 Cement Screed	2.3 Cement Screed	3.3 Roughcast & weather guard paint (External)	4.3 Open to roof
SKIRTING	CEILING				
WALLS:					
		New Walls			
		Existing Walls to be kept			
		Existing Walls to be demolished			

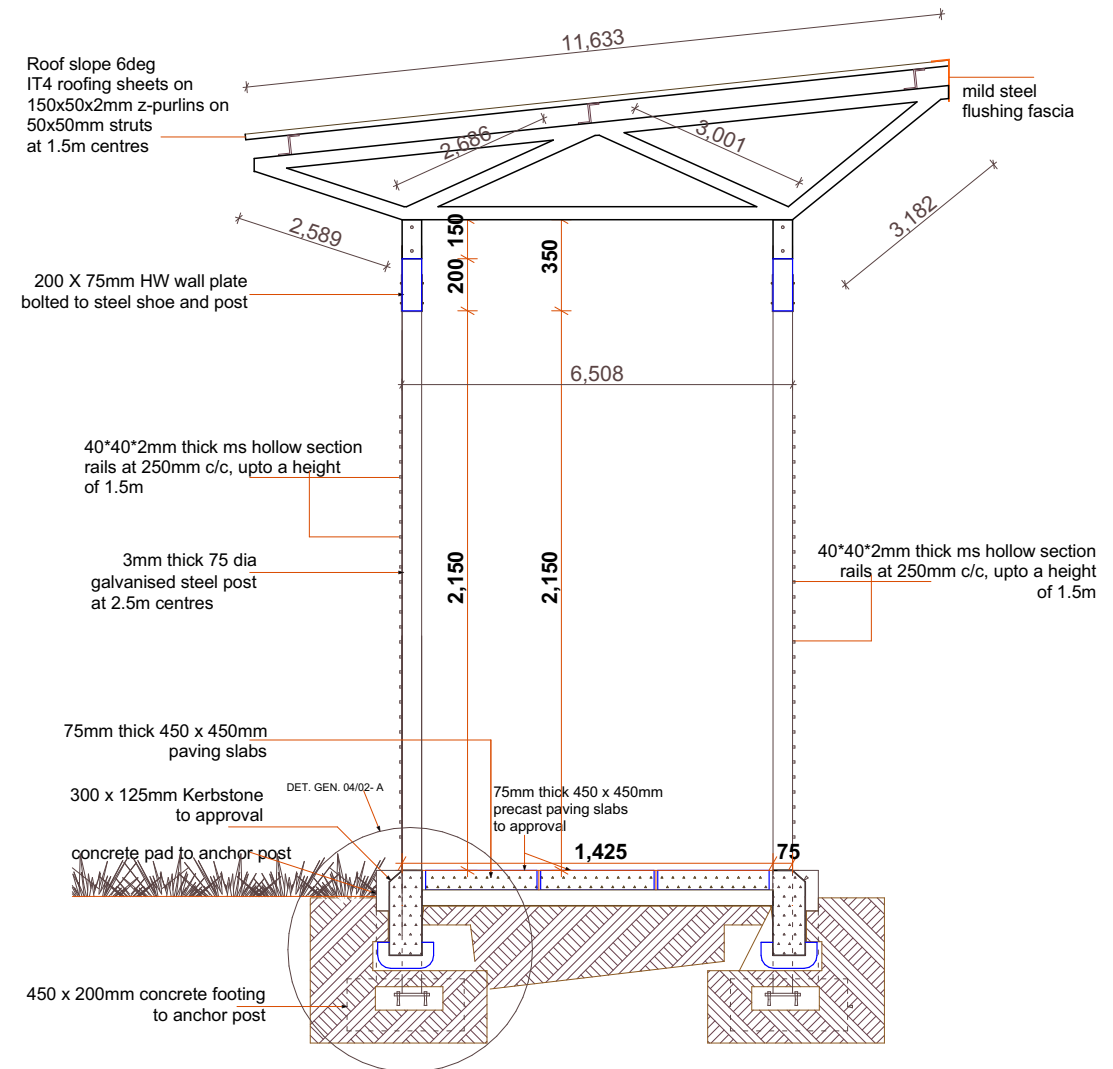
REVISION NOTES:			
No.	Date	Particulars	Initials

Drawing Name: Attendants' Kitchen: Section Details	
Drawn by: NJEm	Date: Nov 2013
Checked by: Matoya Maroria	Date: Nov 2013
Layout ID: ARC/MoH/1204	Scale:1:20

Approximate walkway length - 12m



DET. GEN. 04/02- A
1:5



DET. GEN. 04/01
1:10

Date
August 2024

WeCare project, Result 3 - Infrastructure

Health facility

Buwenge HCIV

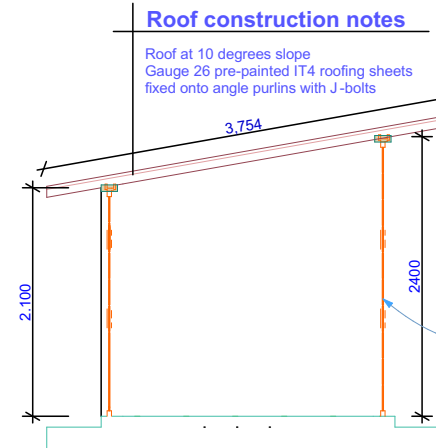
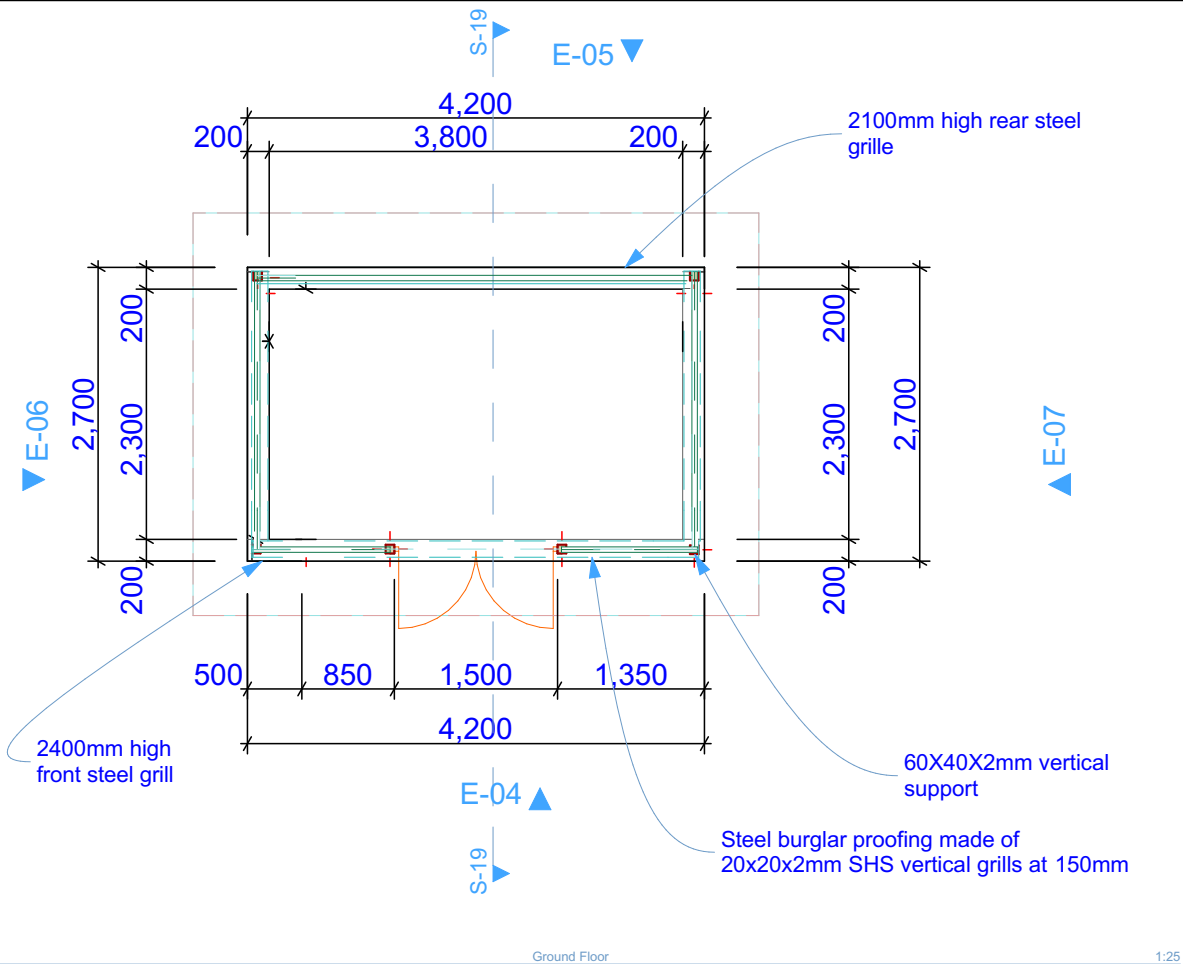
Title

Proposed alterations to the MCH block, walkway from MCH to theatre

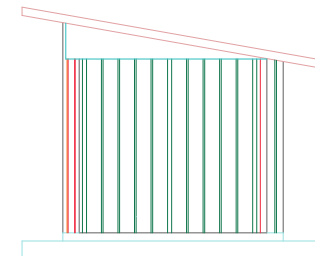
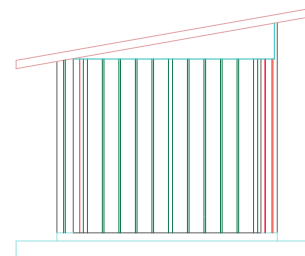
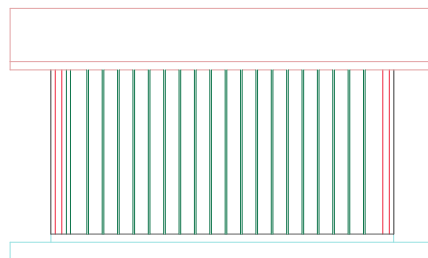
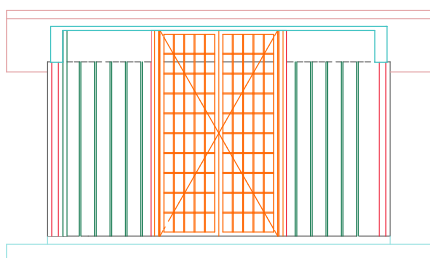


Enabel

Infrastructure Unit
5th Floor, Legacy Towers
Wing A



Oxygen cylinder cage



GENERAL NOTES		
1). All dimensions are in millimeters unless stated otherwise. All dimensions to be checked on site prior to construction. Written dimensions to be followed in preference to scaled dimensions.		
2). All load bearing walls to be constructed in solid well burnt clay bricks of atleast 3.0N/sq. mm characteristic compressive strength complying with BS 5628 Part 1 1978; Structural use of unreinforced masonry.		
3). Walls below 200mm thick to be reinforced with hoop iron at every alternate course		
4). All sanitary work to be in accordance with M.O.H rules and regulation.		
5). All waste pipes and soil pipes are to be in ducts and the bends to have all cleaning eyes accessible from outside		
6). A single layer of 3-ply bituminous felt to be provided between masonry and r.c. work		
7). Drain pipes passing under tarmac, driveways, and buildings to be encased in 150mm thick concrete surround		
8). All reinforced concrete work to Structural Engineer's drawings		
9). All roads, storm water drainage and foul sewerage to Civil Engineer's drawings		
PROJECT: PROPOSED OXYGEN CYLINDER SHELTER TO BE CONSTRUCTED AT BUGEMBE HCIV, JINJA CITY		
CLIENT: ENABEL		
DRAWING TITLE: Ground Floor, Building Section, Elevation		
Drawing Scale 1:25, 1:33.33		
Layout ID 1	Drawn by:	Checked by: