

As built drawing
NTS

Date
August 2024

WeCare project, Result 3 - Infrastructure

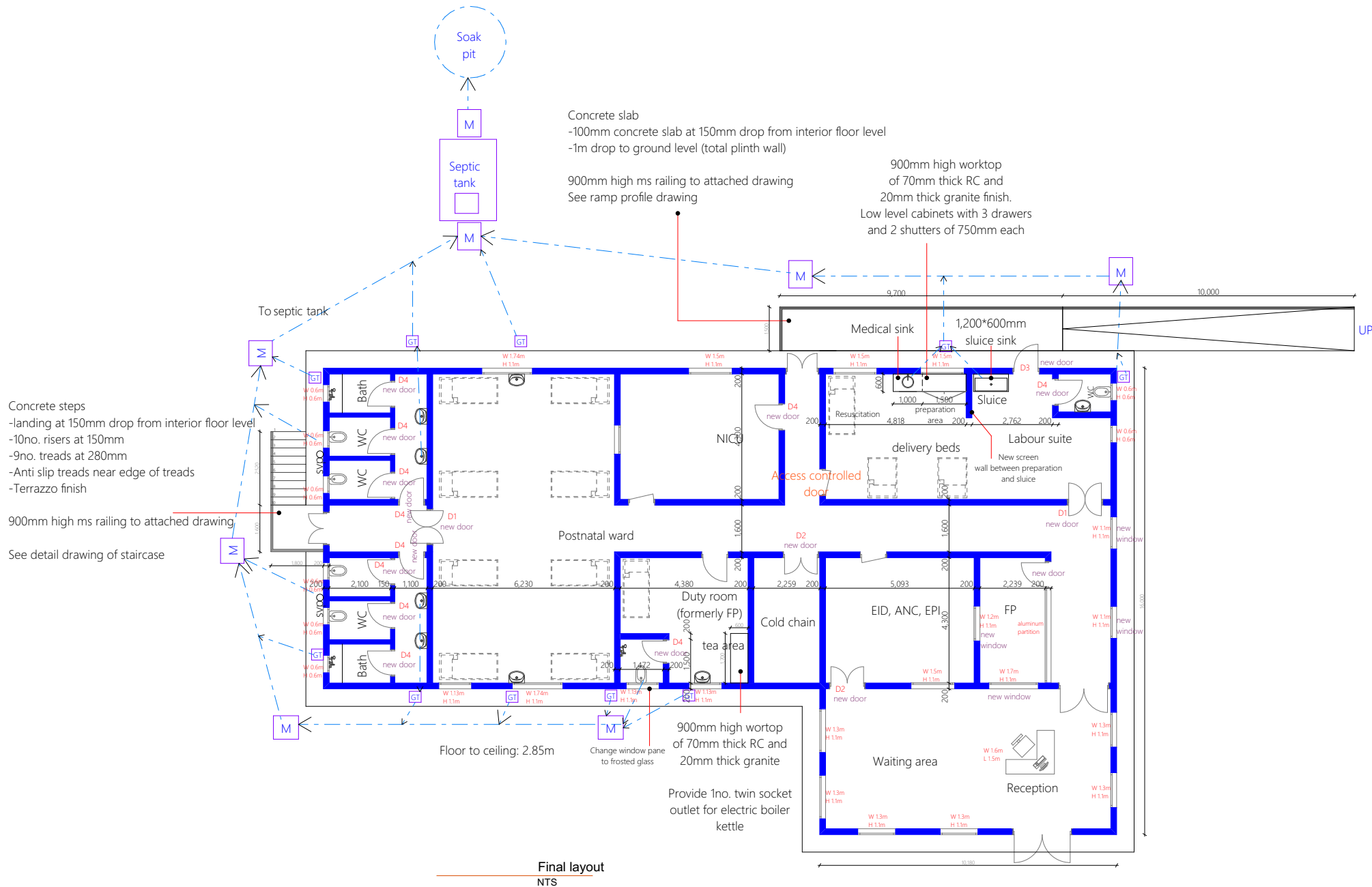
Health facility Buwenge HCIV

Title Proposed alterations to the MCH block, walkway from MCH to theatre



Enabel

Infrastructure Unit
5th Floor, Legacy Towers
Wing A



Date
August 2024

WeCare project, Result 3 - Infrastructure

Health facility

Buwenge HCIV

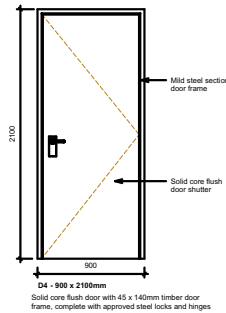
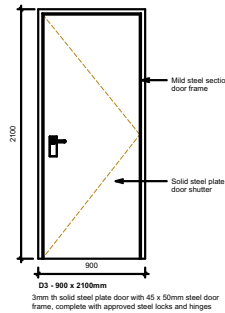
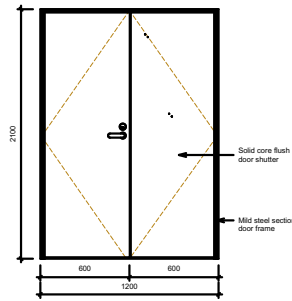
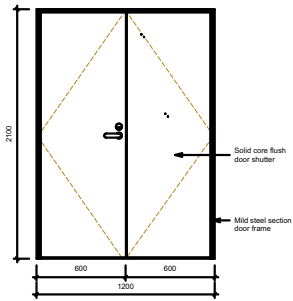
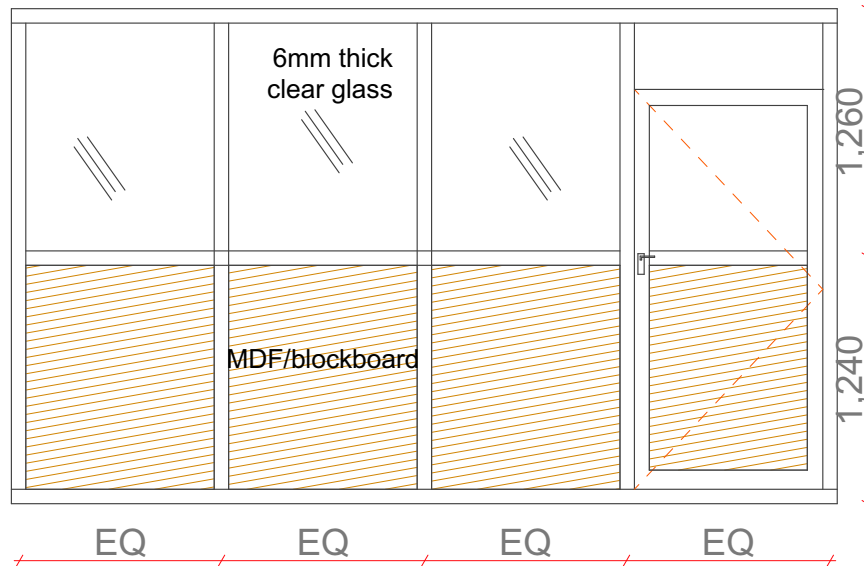
Title

Proposed alterations to the MCH block, walkway from MCH to theatre

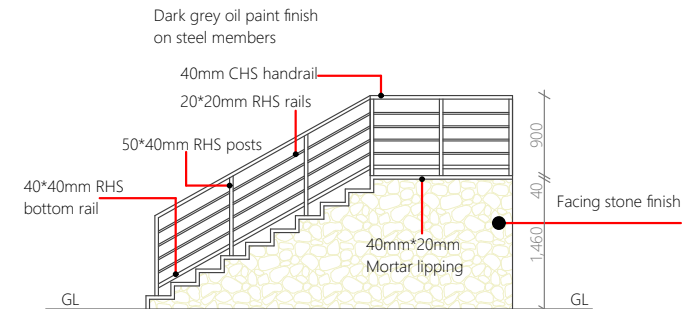


Infrastructure Unit
 5th Floor, Legacy Towers
 Wing A

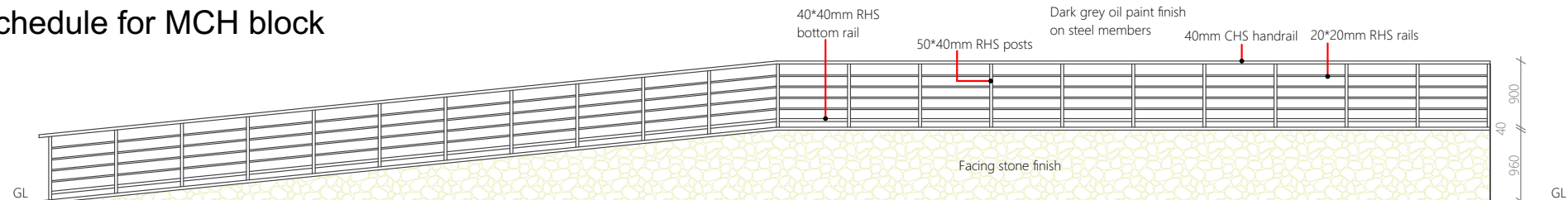
Partition detail elevation



Door schedule for MCH block



Stair profile
NTS



Ramp profile

Date
August 2024

WeCare project, Result 3 - Infrastructure

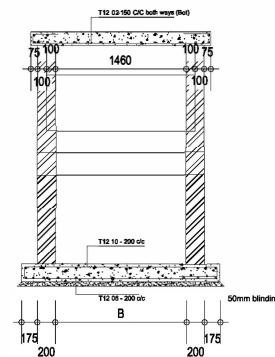
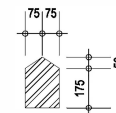
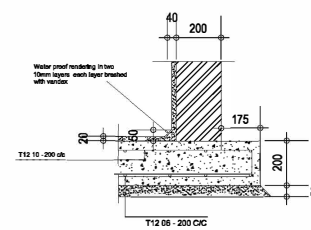
Health facility
Buwenge HCIV

Title
Proposed alterations to the MCH block, walkway from MCH to theatre

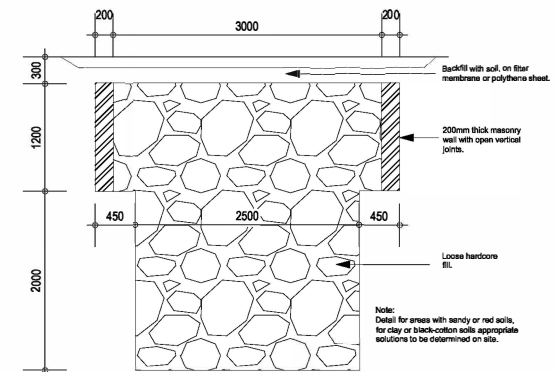
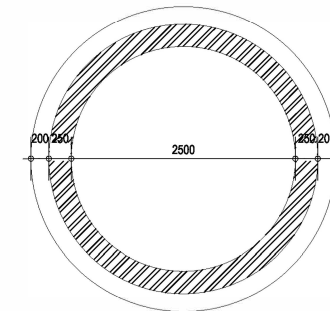


Enabel

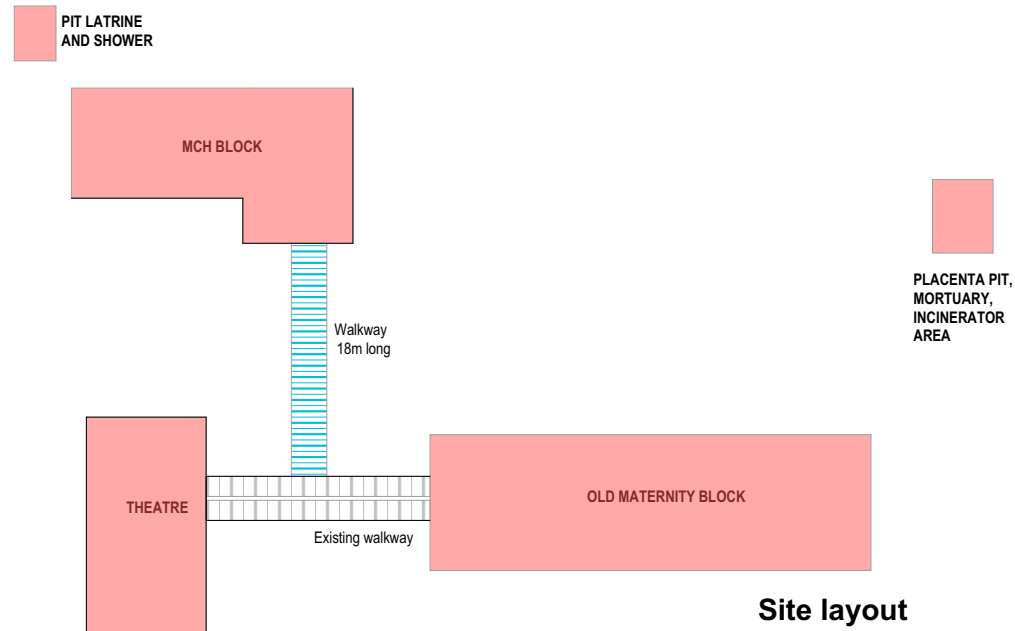
Infrastructure Unit
5th Floor, Legacy Towers
Wing A



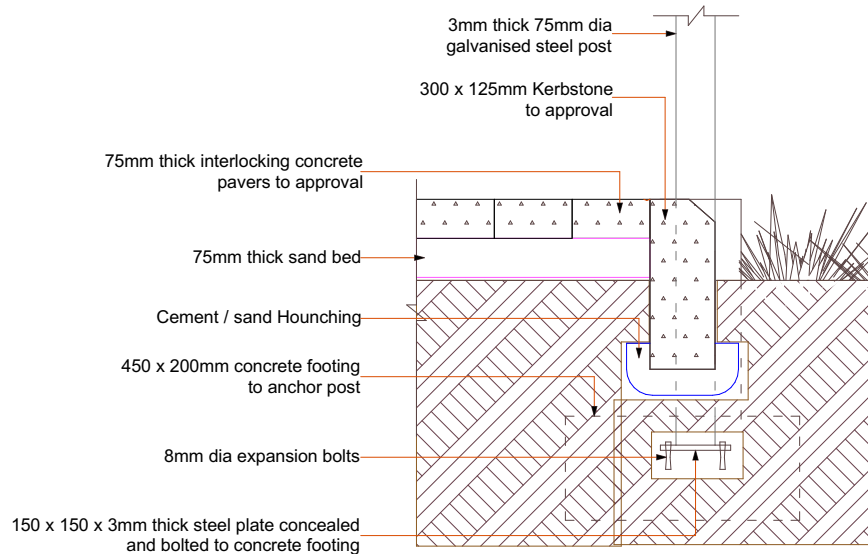
30no. users



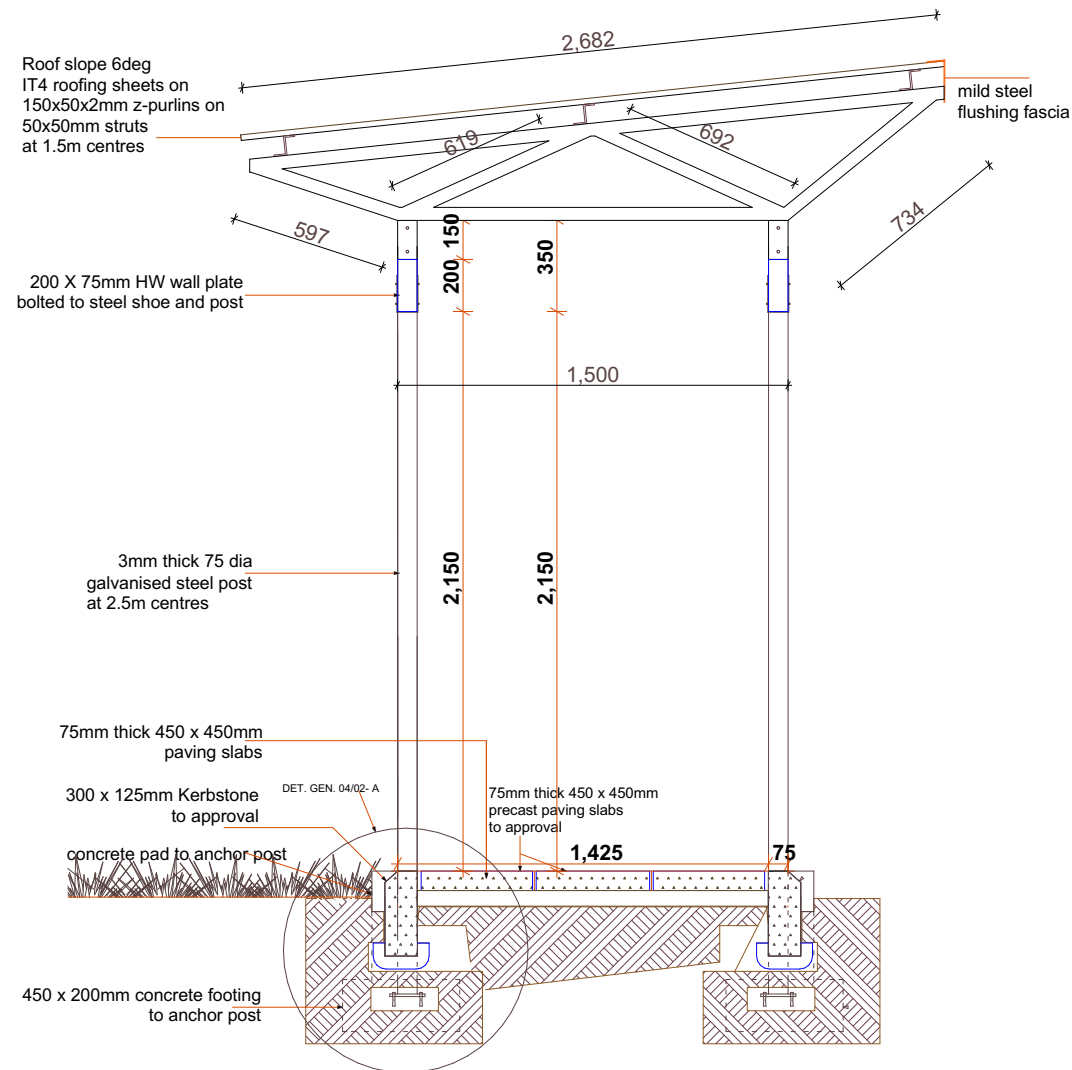
Sheet No: 1.A.13



Site layout



DET. GEN. 04/02- A
nts



DET. GEN. 04/01
nts

Date
August 2024

WeCare project, Result 3 - Infrastructure

Health facility Buwenge HCIV

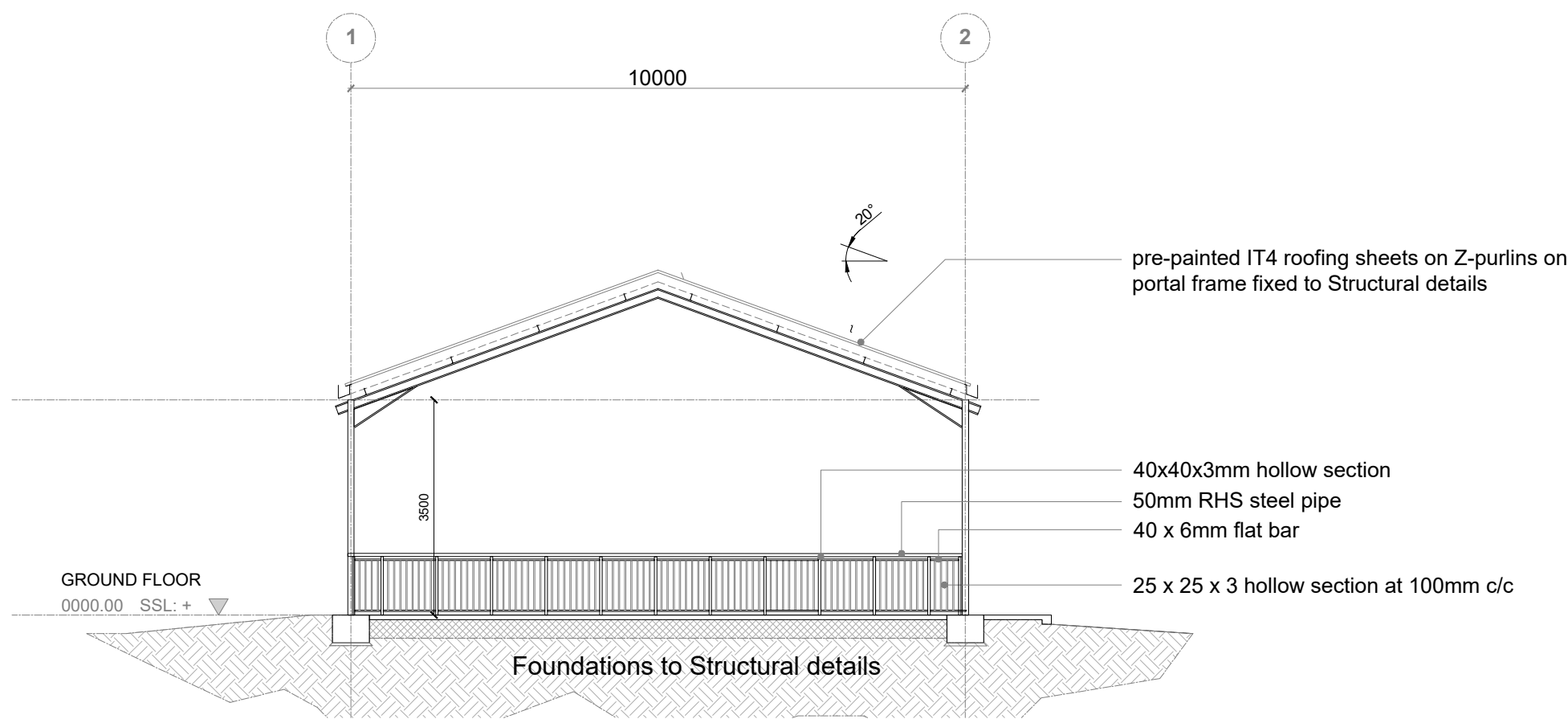
Title Proposed alterations to the MCH block, walkway from MCH to theatre



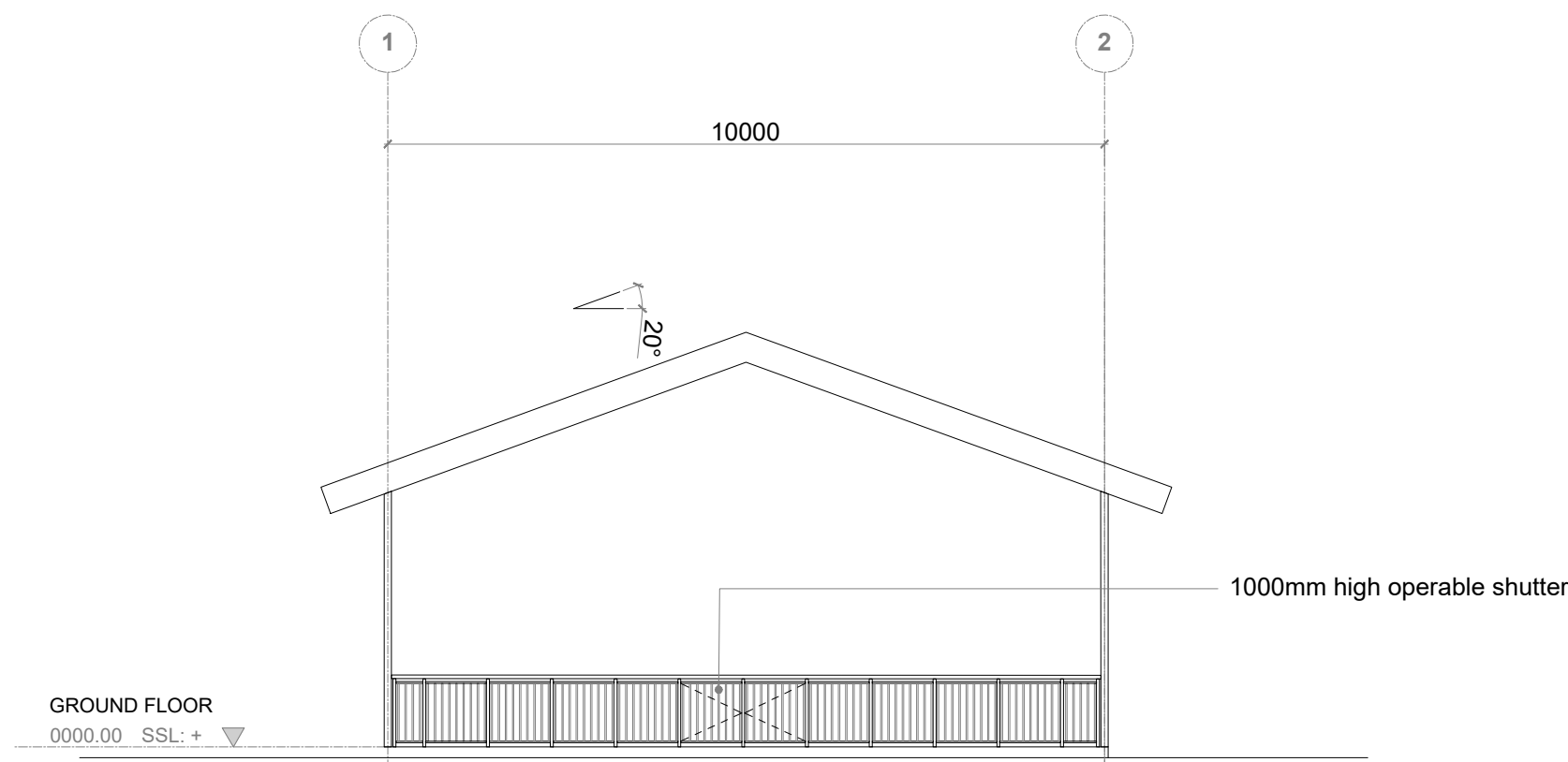
Infrastructure Unit
5th Floor, Legacy Towers
Wing A

PROPOSED HEALTH CENTRE IV STANDARD DESIGN

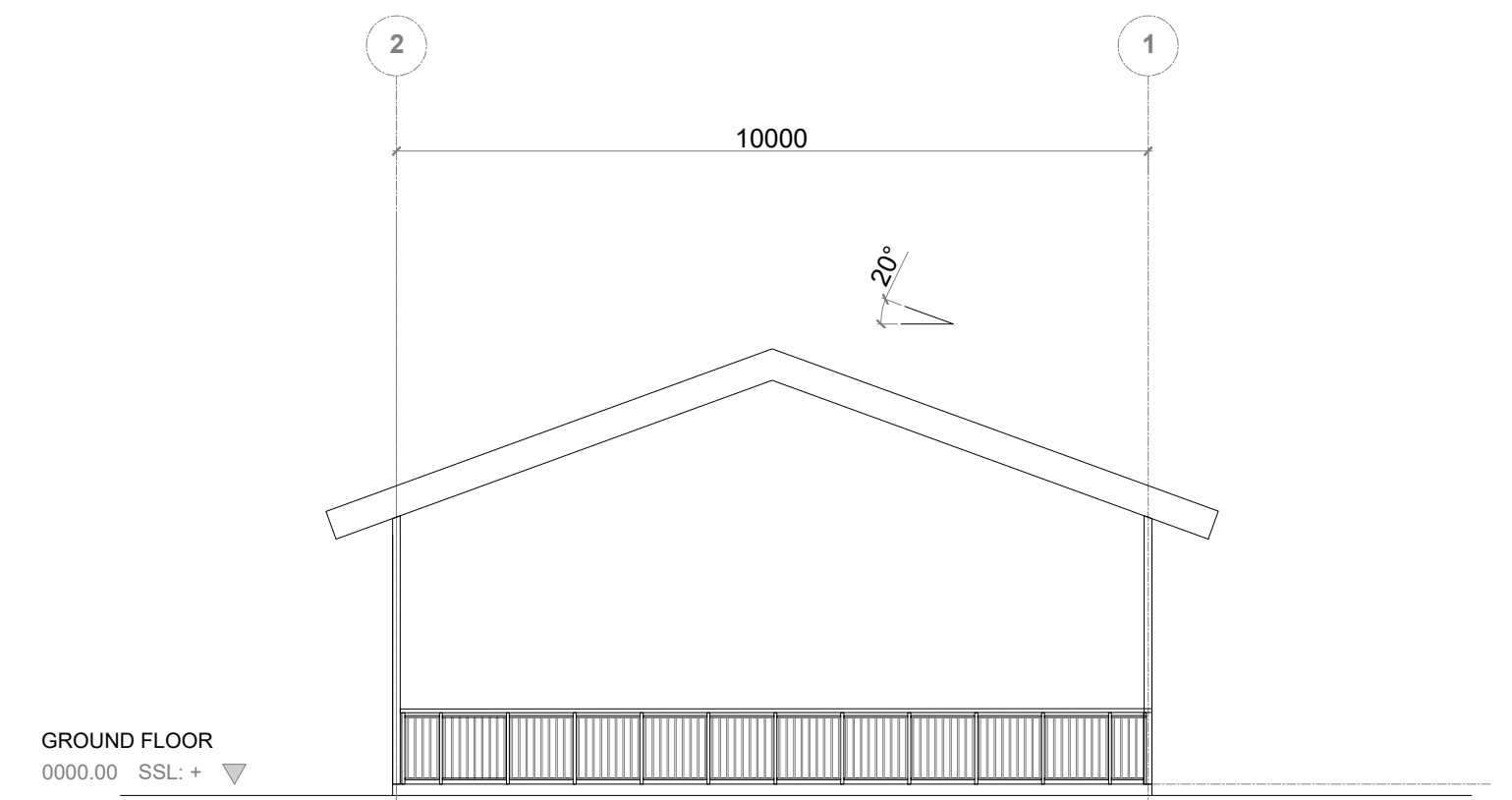
WAITING SHED



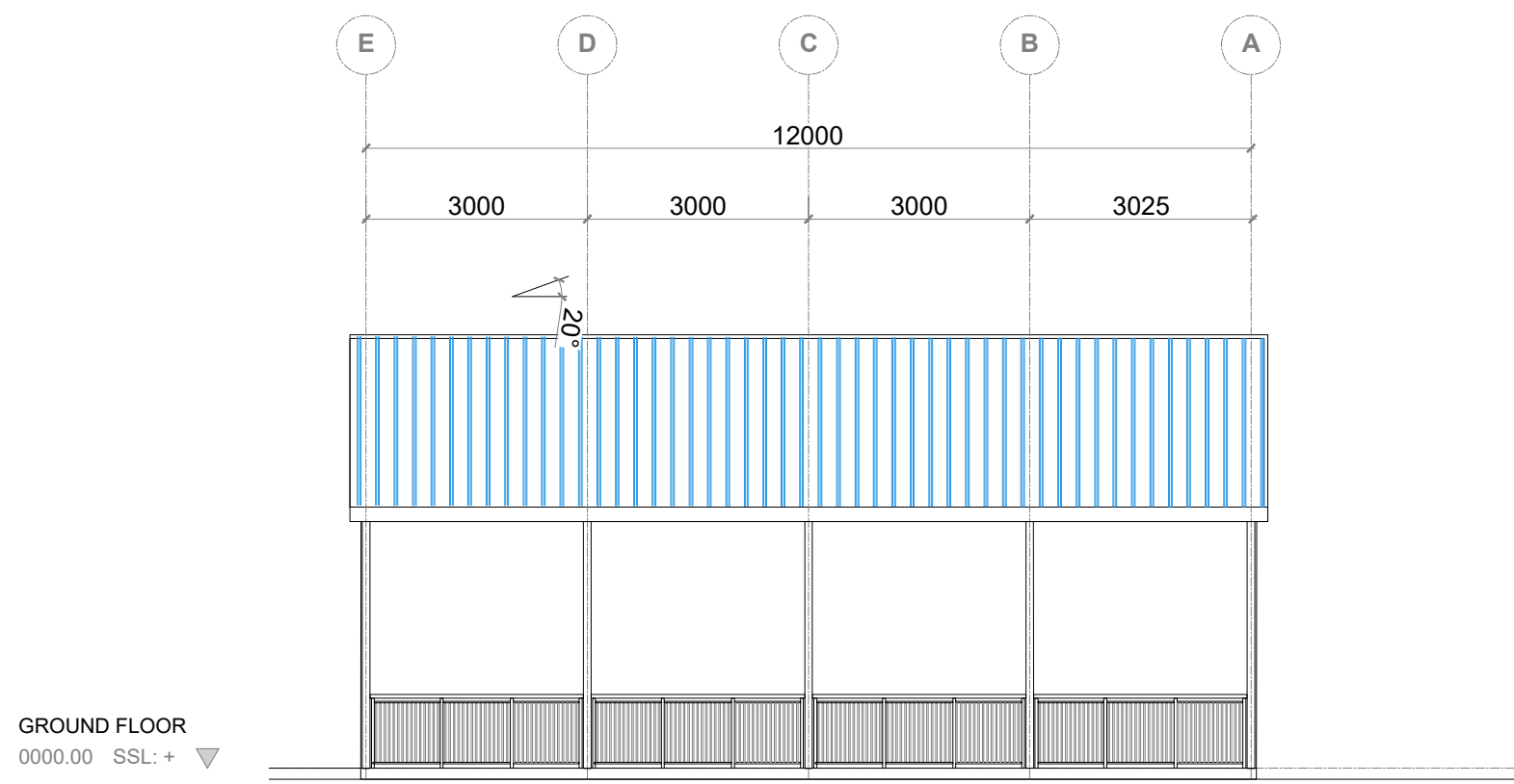
7 WAITING SHED- SECTION C-C
Scale 1:100



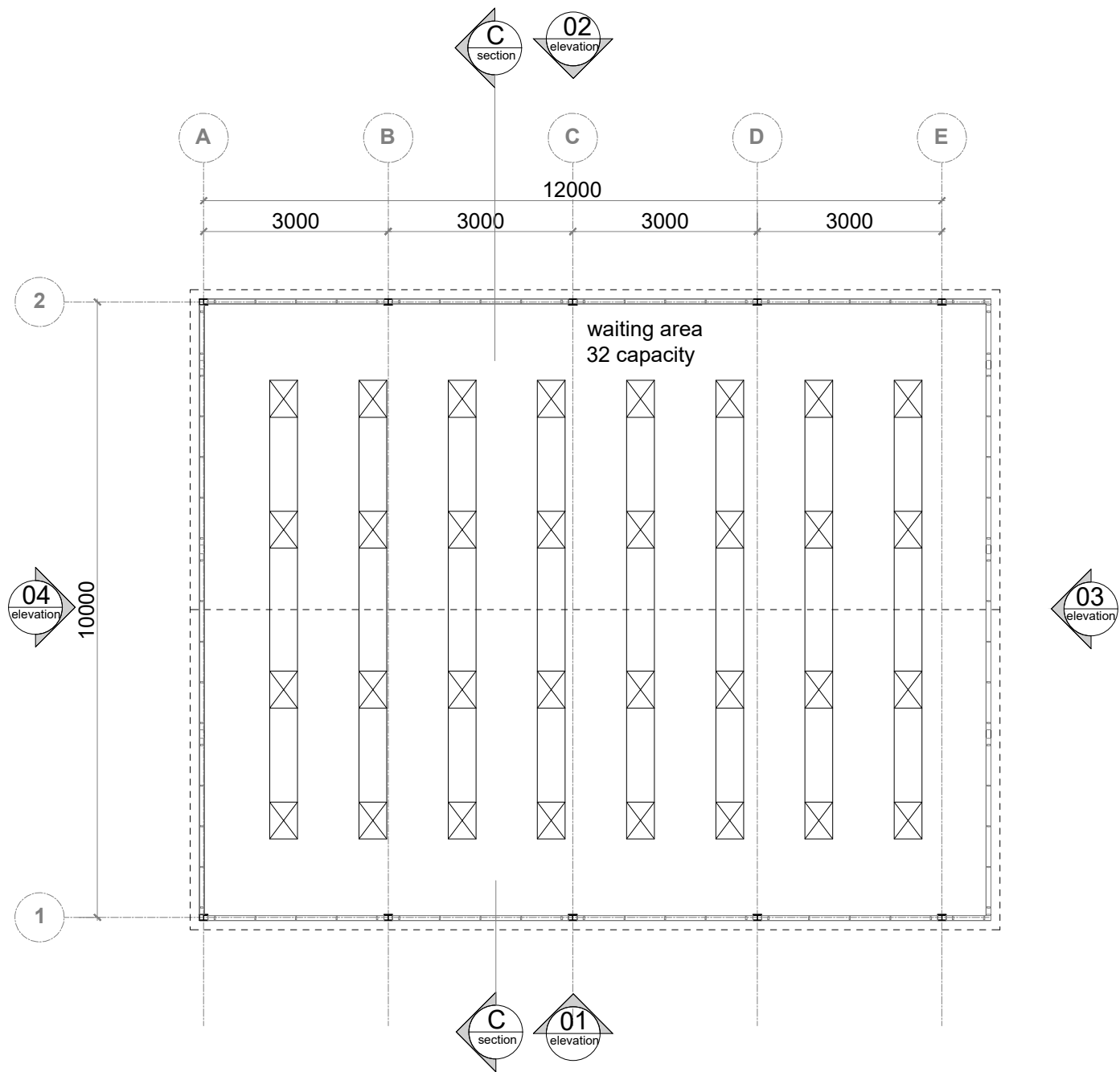
5 WAITING SHED- ELEVATION 03
Scale 1:100



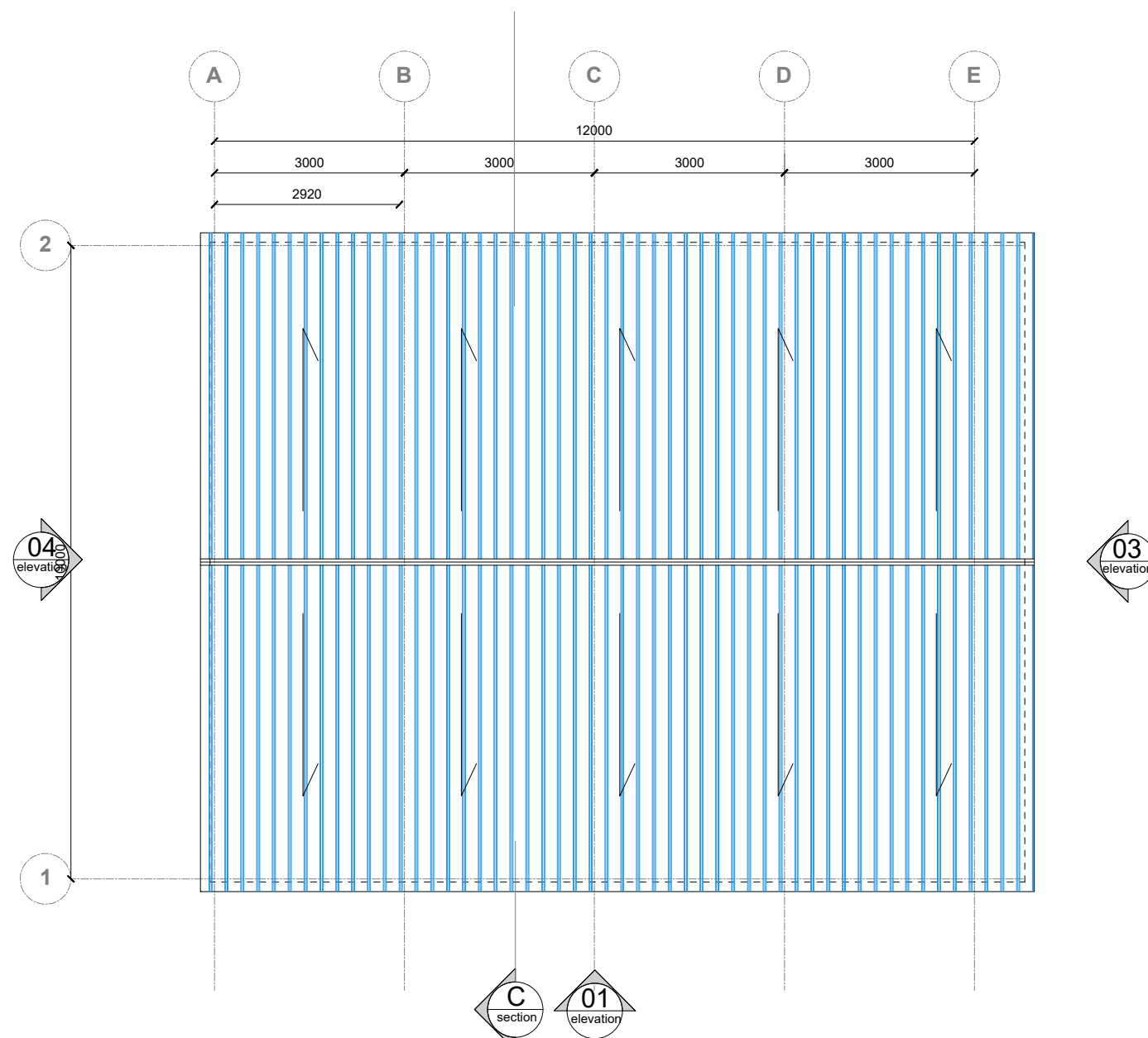
6 WAITING SHED- ELEVATION 04
Scale 1:100



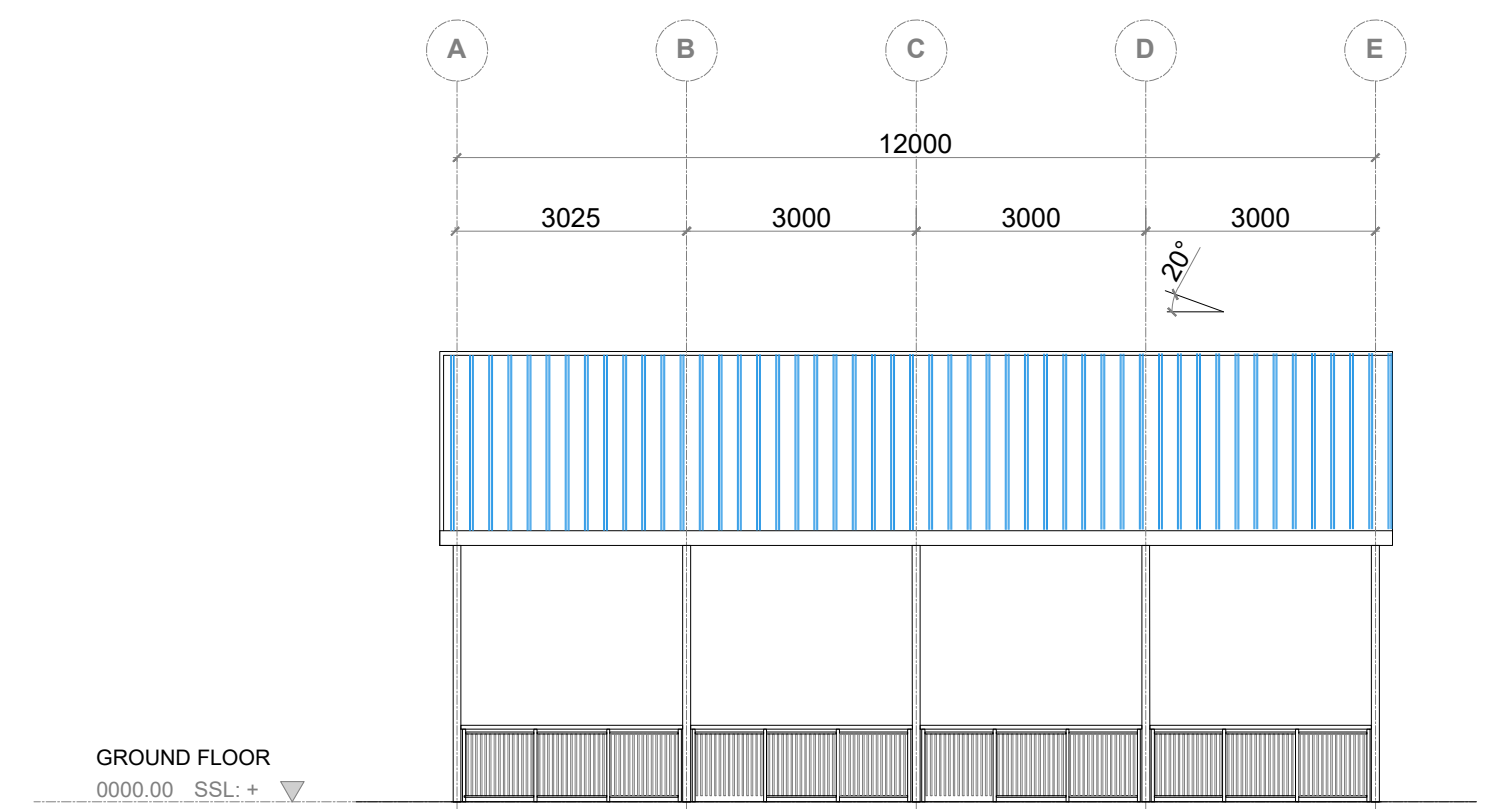
4 WAITING SHED- ELEVATION 02
Scale 1:100



1 WAITING SHED - GROUND FLOOR PLAN
Scale 1:100



2 WAITING SHED- ROOF PLAN
Scale 1:100



3 WAITING SHED- SECTION A-A
Scale 1:100

MINISTRY OF HEALTH
PLOT 6 , Lourdel Road, NAKASERO
P.O.Box 7272, Kampala-Uganda
TEL: +256417712260
e-mail: info@health.go.ug

Notes:

Date:

Sign:

**PROPOSED HEALTH CENTRE IV
STANDARD DESIGN -
WAITING SHED**

Drawing Title:

Waiting Shed

Drawn by: E.S

Date: **Sept-2023**

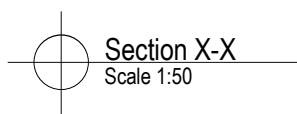
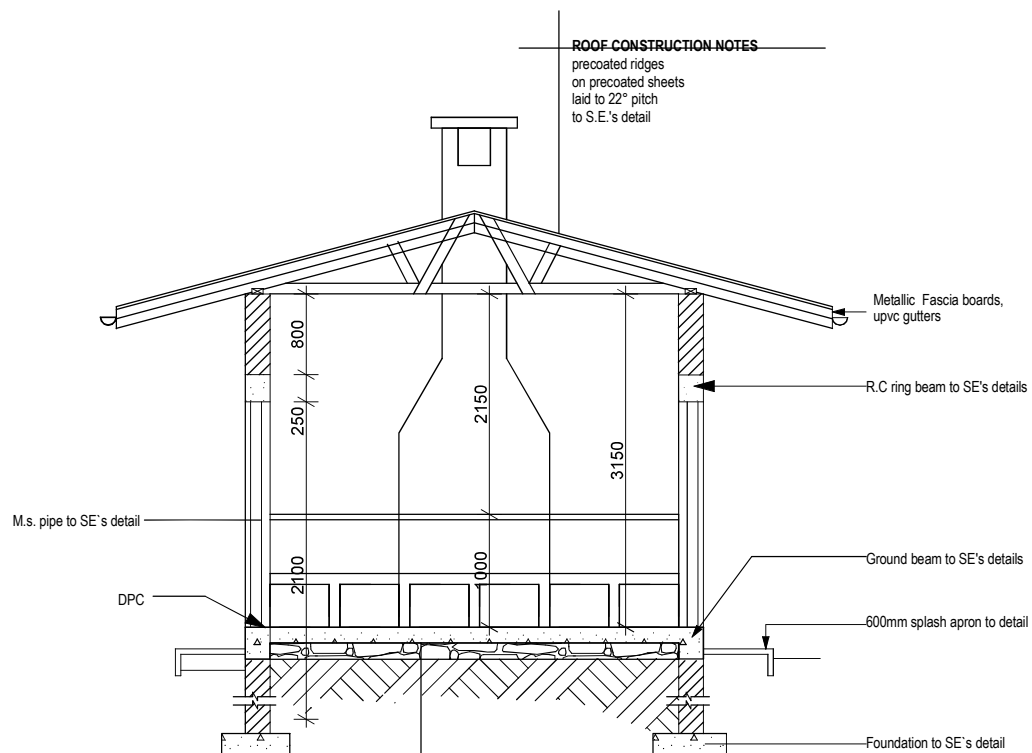
Checked by: Arch. JFN

Drawing no: **arch. 1.01**

Scale:
AS SHOWN


PROPOSED HEALTH CENTRE IV STANDARD DESIGN

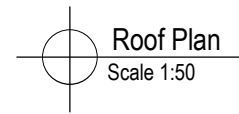
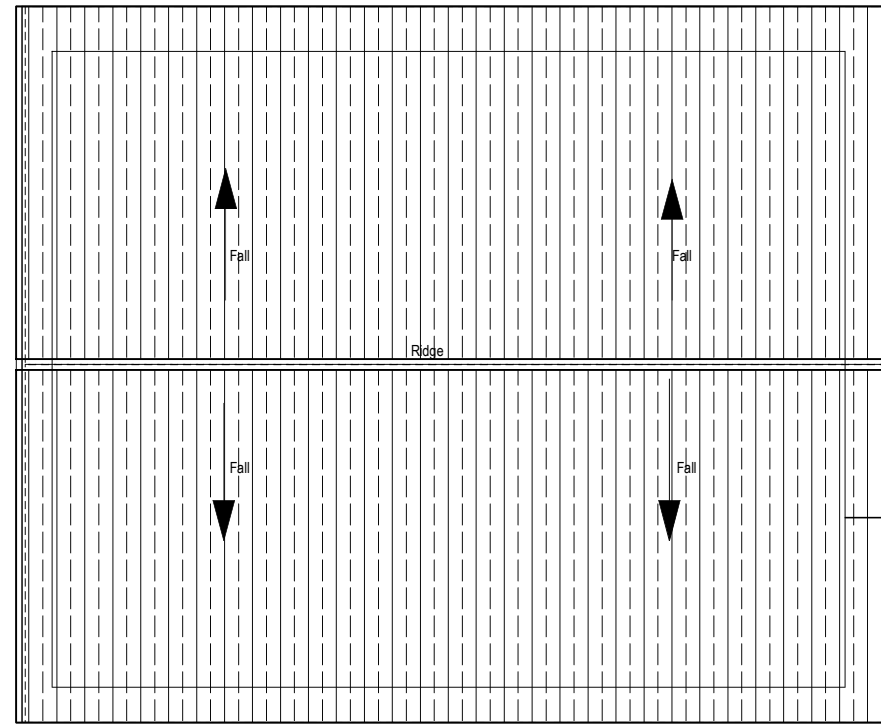
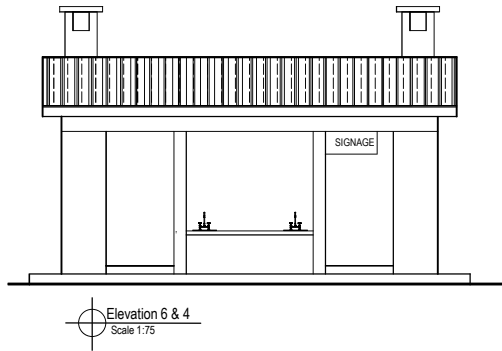
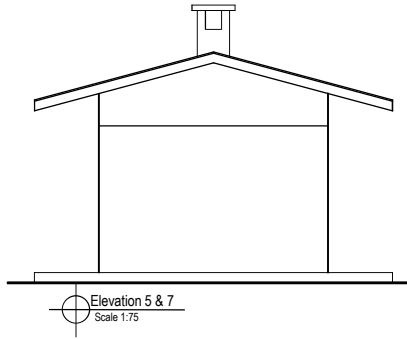
ATTENDANT'S KITCHEN




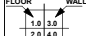
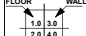
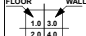
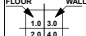
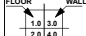
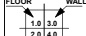
FOUNDATION NOTES

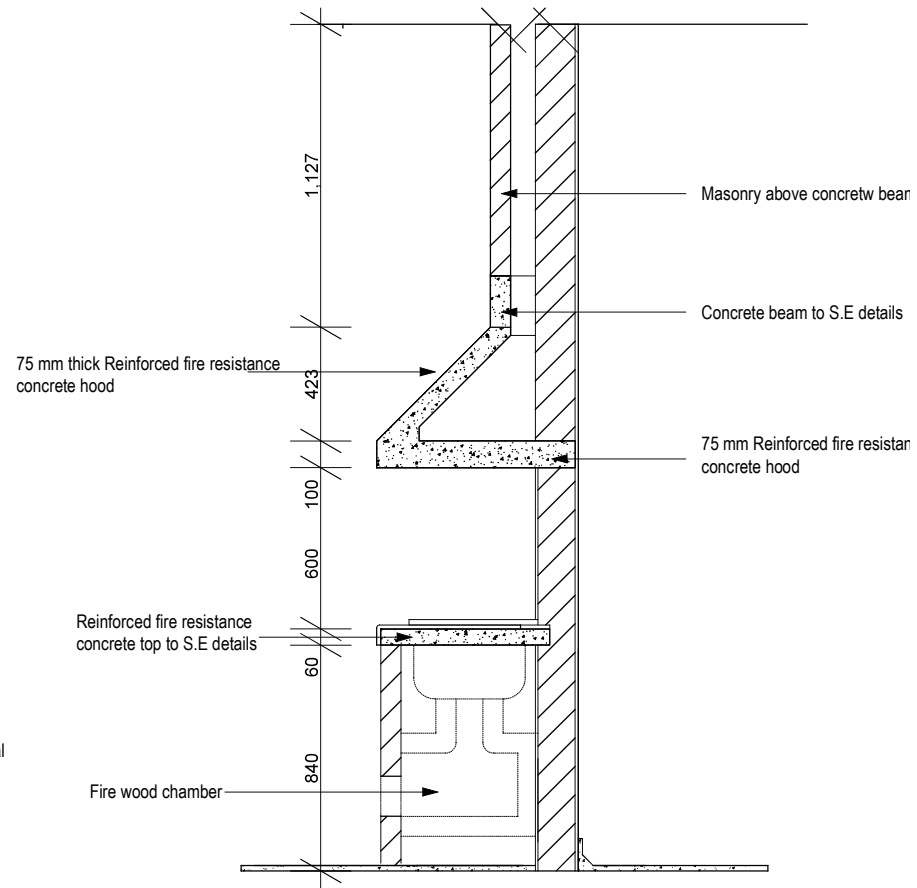
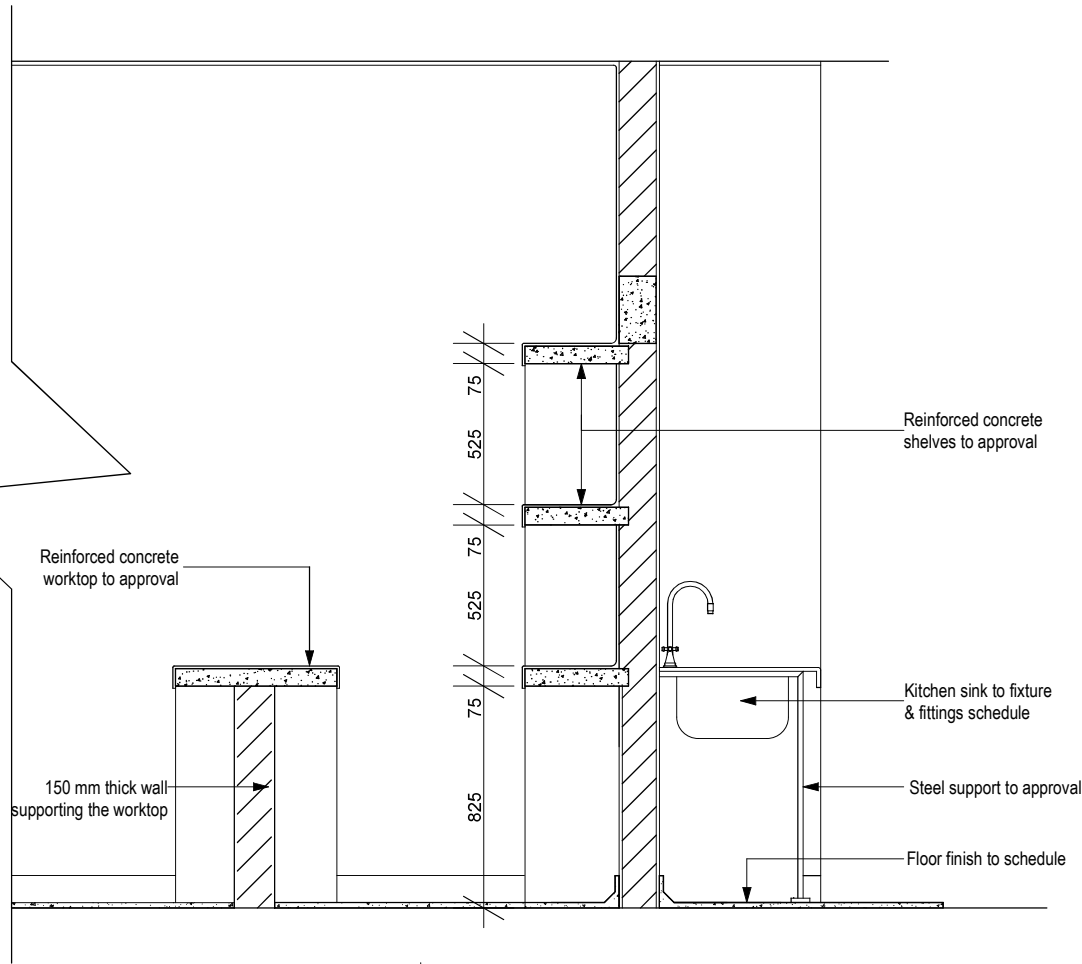
Cement screed Floor finish on,
150mm thick concrete slab (1:3:6 mix) on
Gauge 1000mm visqueen or similar gauge dpm
With BRC mesh A142 on,
50mm Clean Sand on,
150mm hard core on,
Well compacted & treated laterite

<div>Project Title:</div> <div>DESIGN STANDARDS FOR HEALTH FACILITIES</div> <div>Client:</div> <div><div>REPUBLIC OF UGANDA</div><div>MINISTRY OF HEALTH</div></div>	CONSULTANTS:		GENERAL NOTES:		LEGEND:				REVISION NOTES:				Drawing Name: Attendants' Kitchen: Section	
	Project Mgrs:	Creations Consult (A) Ltd.	<div>1. All Dimensions are in millimeters unless stated otherwise.</div> <div>2. Do not scale the drawings. In case of any discrepancy, consult the Architect.</div> <div>3. All External Walls are 230mm, including plaster.</div> <div>4. Refer to notes for finishes and details.</div> <div>5. These Drawings are to be read in conjunction with other specialists drawings.</div>	<div>FINISHES:</div> <div><div><div><div>FLOOR</div><div>1.1 Unpolished Terrazzo</div></div><div><div>1.2 Polished Terrazzo</div><div>1.3 Cement Screed</div></div><div><div>WALL</div><div>2.1 Unpolished Terrazzo</div><div>2.2 Polished Terrazzo</div><div>2.3 Cement Screed</div></div><div><div>SKIRTING</div><div>2.4 Polished Terrazzo</div></div><div><div>CEILING</div><div>2.5 Gypsum plaster board</div></div></div><div>1.0 3.0</div><div>2.0 4.0</div></div> <div>WALLS:</div> <div><div><div></div><div>New Walls</div></div><div><div></div><div>Existing Walls to be kept</div></div><div><div></div><div>Existing Walls to be demolished</div></div></div>	1.0 FLOOR	2.0 SKIRTING	3.0 WALLS	4.0 CEILING	No.	Date	Particulars	Initials	<div>Drawn by:</div> <div>NJEm</div> <div>Date:</div> <div>Nov 2013</div> <div>Checked by:</div> <div>Matoya Maroria</div> <div>Date:</div> <div>Nov 2013</div> <div>Layout ID:</div> <div>ARC/MoH/1202</div> <div>Scale:1:50</div>	
	Architects:	EDON Consultants Int.			1.1 Unpolished Terrazzo	2.1 Unpolished Terrazzo	3.1 Silk Vinyl Paint	4.1 Expanded Metal lath						
	Quantity Surv:	DEC Consultants			1.2 Polished Terrazzo	2.2 Polished Terrazzo	3.2 Glazed ceramic Tiles	4.2 Gypsum plaster board						
	Struc. Eng:	Sampar Consulting Engineers			1.3 Cement Screed	2.3 Cement Screed	3.3 Roughcast & weather guard paint (External)	4.3 Open to roof						
	M&E Eng:	M&E Associates Ltd.												
	Environ. Eng:	Air Water Earth												



Wall below

Project Title: DESIGN STANDARDS FOR HEALTH FACILITIES		CONSULTANTS:		GENERAL NOTES:		LEGEND:		REVISION NOTES:				Drawing Name: Attendants' Kitchen: Elevations & Roof Plan																							
Client:  REPUBLIC OF UGANDA MINISTRY OF HEALTH	Project Mgrs:	Creations Consult (A) Ltd.			1. All Dimensions are in millimeters unless stated otherwise.	FINISHES:	1.0 FLOOR		2.0 SKIRTING		3.0 WALLS		4.0 CEILING		<table><tr><th>No.</th><th>Date</th><th>Particulars</th><th>Initials</th></tr><tr><td> </td><td> </td><td> </td><td> </td></tr><tr><td> </td><td> </td><td> </td><td> </td></tr><tr><td> </td><td> </td><td> </td><td> </td></tr><tr><td> </td><td> </td><td> </td><td> </td></tr></table>	No.	Date	Particulars	Initials																
	No.	Date	Particulars				Initials																												
Architects:	EDON Consultants Int.			2. Do not scale the drawings. In case of any discrepancy, consult the Architect.	WALLS:	1.1 Unpolished Terrazzo		2.1 Unpolished Terrazzo		3.1 Silk Vinyl		4.1 Expanded Metal lath																							
Quantity Surv:	DEC Consultants						3. All External Walls are 230mm, including plaster.	1.2 Polished Terrazzo		2.2 Polished Terrazzo		3.2 Glazed ceramic Tiles		4.2 Gypsum plaster board																					
Struc. Eng:	Sampar Consulting Engineers								4. Refer to notes for finishes and details.	1.3 Cement Screed		2.3 Cement Screed		3.3 Roughcast & weather guard paint (External)		4.3 Open to roof																			
M&E Eng:	M&E Associates Ltd.										5. These Drawings are to be read in conjunction with other specialists drawings.	New Walls		Existing Walls to be kept		Existing Walls to be demolished																			
Environ. Eng:	Air Water Earth																																		



Project Title:
**DESIGN STANDARDS FOR
HEALTH FACILITIES**

Client:



CONSULTANTS:

Project Mgrs: Creations Consult (A) Ltd.

Architects: EDON Consultants Int.

Quantity Surv: DEC Consultants

Struc. Eng: Sampar Consulting Engineers

M&E Eng: M&E Associates Ltd.

Environ. Eng: Air Water Earth

GENERAL NOTES:

1. All Dimensions are in millimeters unless stated otherwise.
2. Do not scale the drawings. In case of any discrepancy, consult the Architect.
3. All External Walls are 230mm, including plaster.
4. Refer to notes for finishes and details.
5. These Drawings are to be read in conjunction with other specialists drawings.

LEGEND:

FINISHES:

FLOOR	WALL
1.0	2.0
2.0	3.0
3.0	4.0
SKIRTING	CEILING

WALLS:

1.0 FLOOR	2.0 SKIRTING	3.0 WALLS	4.0 CEILING
1.1 Unpolished Terrazzo	2.1 Unpolished Terrazzo	3.1 Silk Vinyl Paint	4.1 Expanded Metal lath
1.2 Polished Terrazzo	2.2 Polished Terrazzo	3.2 Glazed ceramic Tiles	4.2 Gypsum plaster board
1.3 Cement Screed	2.3 Cement Screed	3.3 Roughcast & weather guard paint (External)	4.3 Open to roof
New Walls			
Existing Walls to be kept			
Existing Walls to be demolished			

REVISION NOTES:

No.	Date	Particulars	Initials

Drawing Name:
Attendants' Kitchen: Section Details

Drawn by:
NJem Date:
Nov 2013

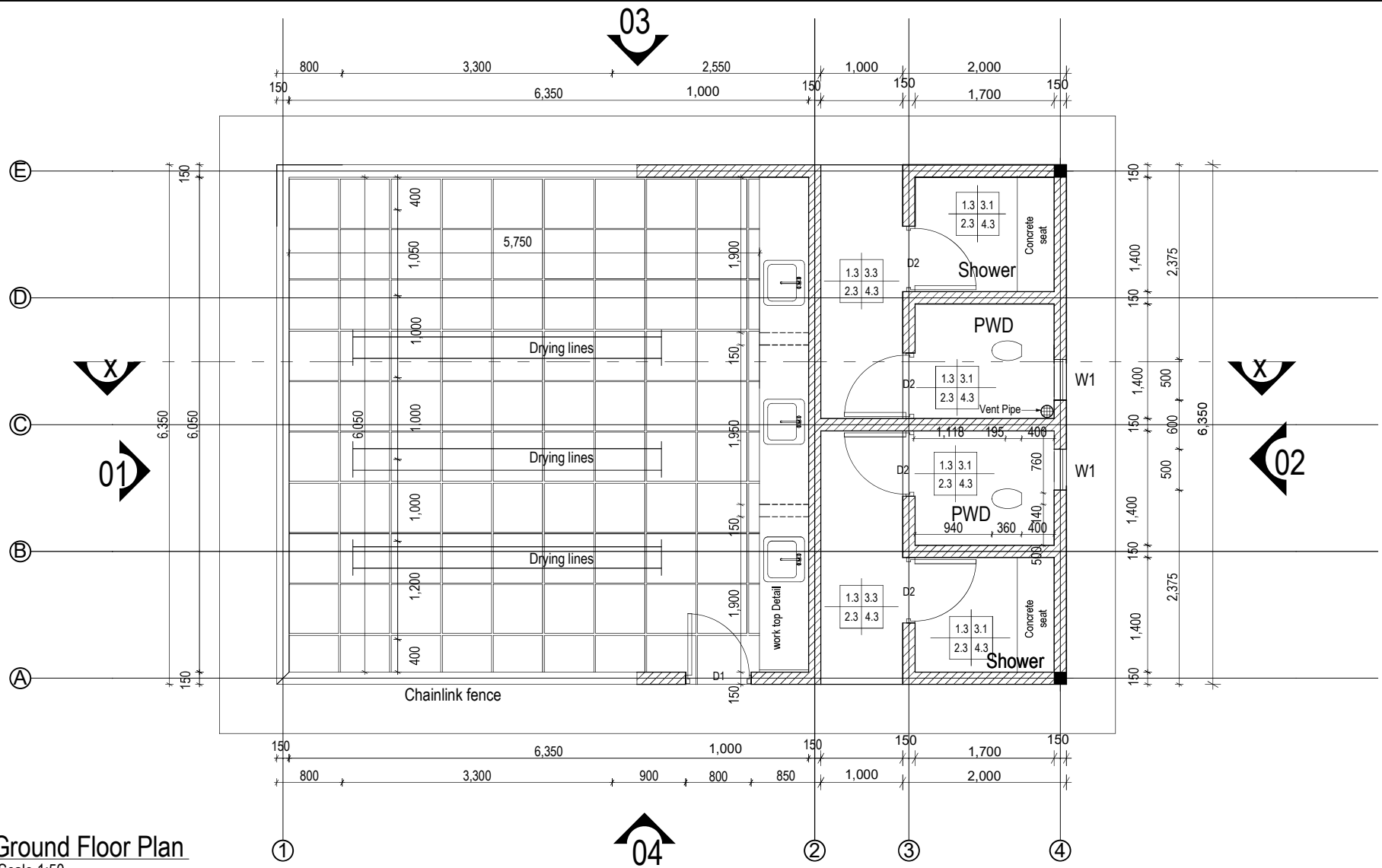
Checked by:
Matoya Maroria Date:
Nov 2013

Layout ID: Scale:1:20

ARC/MoH/1204

PROPOSED HEALTH CENTRE IV STANDARD DESIGN

LAUNDRY



Project Title
**DESIGN STANDARDS FOR
HEALTH FACILITIES**



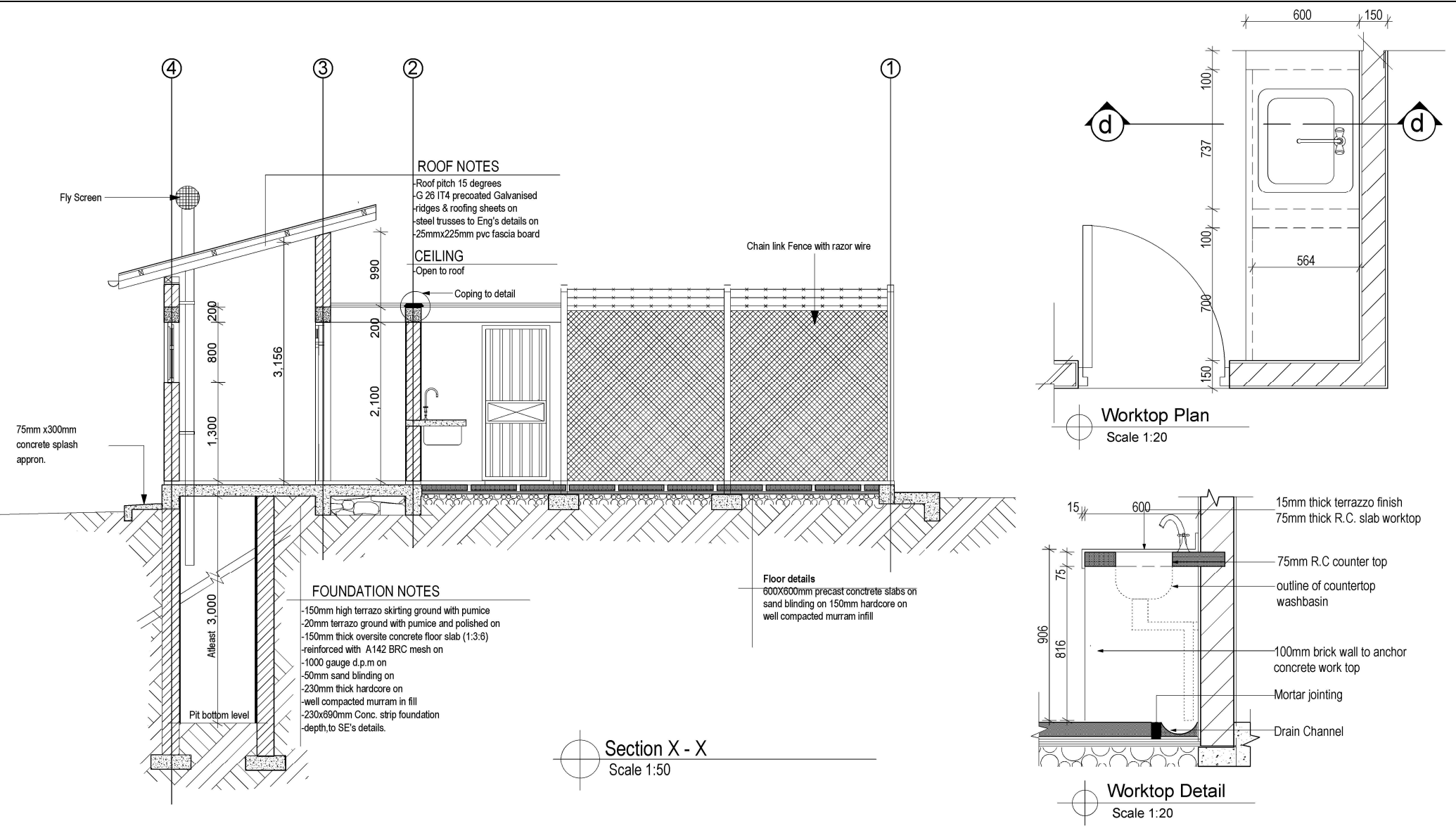
CONSULTANTS:	
Project Mgrs:	Creations Consult (A) Ltd.
Architects:	EDON Consultants Int.
Quantity Surv:	DEC Consultants
Struc. Eng:	Sampar Consulting Engineers
M&E Eng:	M&E Associates Ltd.
Environ. Eng:	Air Water Earth

GENERAL NOTES:	
1. All Dimensions are in millimeters unless stated otherwise.	
2. Do not scale the drawings. In case of any discrepancy, consult the Architect.	
3. All External Walls are 230mm, including plaster.	
4. Refer to notes for finishes and details.	
5. These Drawings are to be read in conjunction with other specialists drawings.	

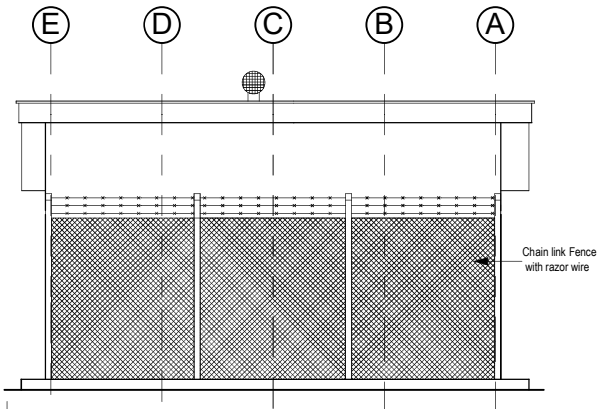
LEGEND:					
FINISHES:		1.0 FLOOR	2.0 SKIRTING	3.0 WALLS	4.0 CEILING
FLOOR	WALL	1.1 Unpolished Terrazzo	2.1 Unpolished Terrazzo	3.1 Silk Vinyl Paint	4.1 Expanded Metal lath
1.0	3.0	1.2 Polished Terrazzo	2.2 Polished Terrazzo	3.2 Glazed ceramic Tiles	4.2 Gypsum plaster board
2.0	4.0	1.3 Cement Scribed	2.3 Cement Scribed	3.3 Roughcast & weather guard paint (External)	4.3 Open to roof
SKIRTING	CEILING				
WALLS:					
<div style="border-bottom: 1px solid black; height: 10px; width: 100%;"></div>		New Walls			
<div style="border-bottom: 1px dashed black; height: 10px; width: 100%;"></div>		Existing Walls to be kept			
<div style="border-bottom: 1px solid black; height: 10px; width: 100%;"></div>		Existing Walls to be demolished			

REVISION NOTES:			
No.	Date	Particulars	Initials

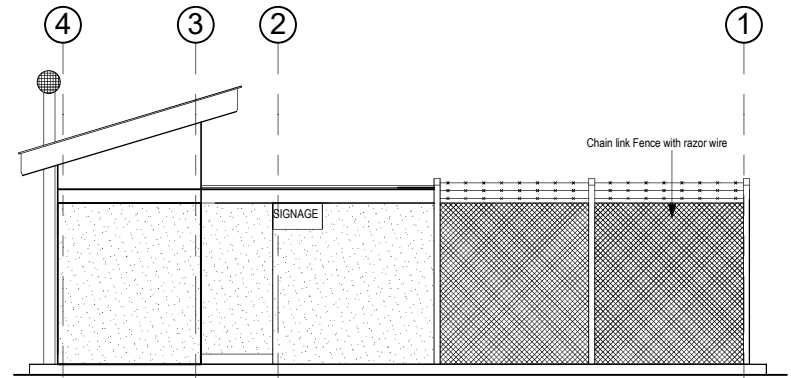
Drawing Name: Laundry : Ground Floor Plan	
Drawn by: NJEm	Date: Nov 2013
Checked by: Matoya Maroria	Date: Nov 2013
Layout ID: ARC/MoH/1301	Scale: 1:50



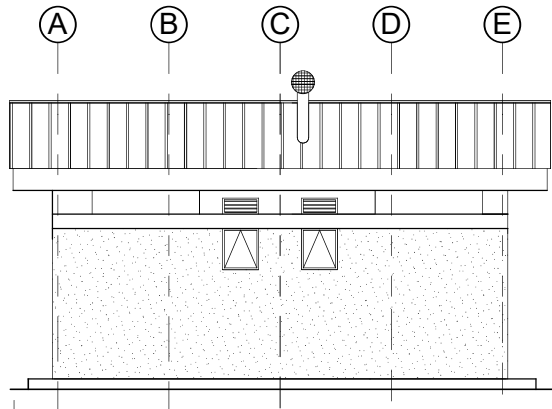
Project Title		CONSULTANTS:		GENERAL NOTES:		LEGEND:				REVISION NOTES:				Drawing Name:					
<div>DESIGN STANDARDS FOR HEALTH FACILITIES</div>		Project Mgrs: Creations Consult (A) Ltd.		1. All Dimensions are in millimeters unless stated otherwise.		<div>FINISHES:</div> <div><div><div><div>FLOOR</div><div>WALL</div><div>SKIRTING</div><div>CEILING</div></div><div><div><div><div>1.0</div><div>3.0</div><div>2.0</div><div>4.0</div></div><div><div><div><div>1.1 Unpolished Terrazzo</div><div>2.1 Unpolished Terrazzo</div><div>2.2 Polished Terrazzo</div><div>1.3 Cement Screed</div></div><div><div><div><div>2.0 SKIRTING</div><div>2.2 Polished Terrazzo</div><div>2.3 Cement Screed</div></div><div><div><div><div>3.0 WALLS</div><div>3.1 Silk Vinyl Paint</div><div>3.2 Glazed ceramic Tiles</div><div>3.3 Roughcast & weather guard paint (External)</div></div><div><div><div><div>4.0 CEILING</div><div>4.1 Expanded Metal lath</div><div>4.2 Gypsum plaster board</div><div>4.3 Open to roof</div></div></div></div></div></div></div></div></div></div></div></div></div></div>				No.		Date		Particulars		Initials		Laundry : Section	
		Architects: EDON Consultants Int.								2. Do not scale the drawings. In case of any discrepancy, consult the Architect.		<div>WALLS:</div> <div><div><div><div></div><div></div><div></div><div></div><div></div><div></div></div><div><div><div><div>New Walls</div><div>Existing Walls to be kept</div><div>Existing Walls to be demolished</div></div></div></div></div></div>				Drawn by: NJEm		Date: Nov 2013	
		Quantity Surv: DEC Consultants		Checked by: Matoya Maroria		Date: Nov 2013													
		Struc. Eng: Sampar Consulting Engineers		Layout ID:		Scale: 1:50, 1:20													
		M&E Eng: M&E Associates Ltd.		Environ. Eng: Air Water Earth		5. These Drawings are to be read in conjunction with other specialists drawings.						ARC/MoH/1302							
REPUBLIC OF UGANDA MINISTRY OF HEALTH																			



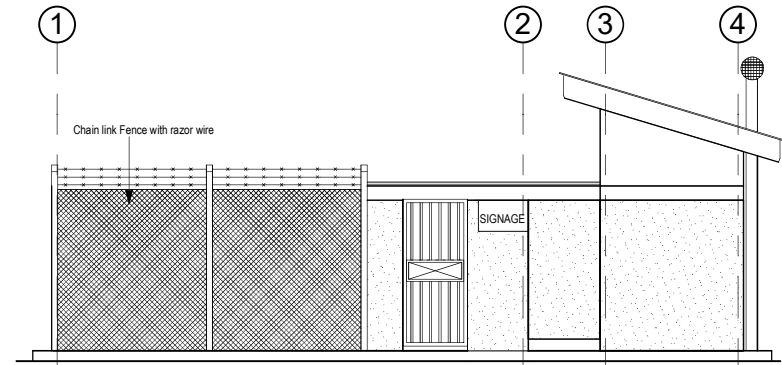
Elevation 01
Scale 1:75



Elevation 03
Scale 1:75



Elevation 02
Scale 1:75



Elevation 04
Scale 1:75

Project Title
**DESIGN STANDARDS FOR
HEALTH FACILITIES**

Client



CONSULTANTS:	
Project Mgrs:	Creations Consult (A) Ltd.
Architects:	EDON Consultants Int.
Quantity Surv:	DEC Consultants
Struc. Eng:	Sampar Consulting Engineers
M&E Eng:	M&E Associates Ltd.
Environ. Eng:	Air Water Earth

GENERAL NOTES:	
1. All Dimensions are in millimeters unless stated otherwise.	
2. Do not scale the drawings. In case of any discrepancy, consult the Architect.	
3. All External Walls are 230mm, including plaster.	
4. Refer to notes for finishes and details.	
5. These Drawings are to be read in conjunction with other specialists drawings.	

LEGEND:					
FINISHES:		1.0 FLOOR	2.0 SKIRTING	3.0 WALLS	4.0 CEILING
		1.1 Unpolished Terrazzo	2.1 Unpolished Terrazzo	3.1 Silk Vinyl Paint	4.1 Expanded Metal lath
		1.2 Polished Terrazzo	2.2 Polished Terrazzo	3.2 Glazed ceramic Tiles	4.2 Gypsum plaster board
		1.3 Cement Scribed	2.3 Cement Scribed	3.3 Roughcast & weather guard paint (External)	4.3 Open to roof
FLOOR	WALL				
1.0	3.0				
2.0	4.0				
SKIRTING	CEILING				
WALLS:					
—————		New Walls			
—————		Existing Walls to be kept			
-----		Existing Walls to be demolished			

REVISION NOTES:			
No.	Date	Particulars	Initials

Drawing Name: Laundry : Elevations	
Drawn by: NJEm	Date: Nov 2013
Checked by: Matoya Maroria	Date: Nov 2013
Layout ID: ARC/MoH/1303	Scale: 1:75

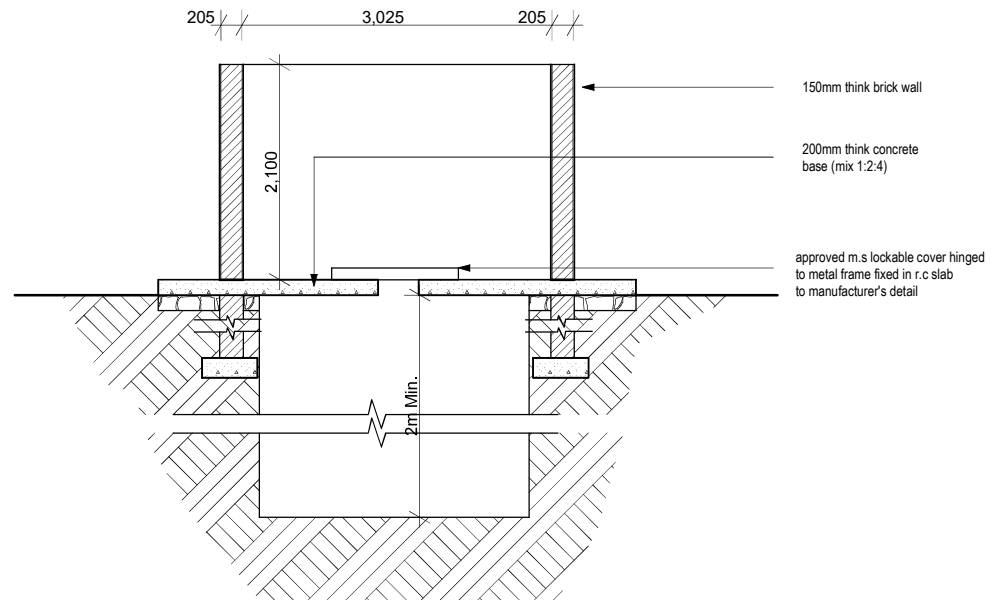
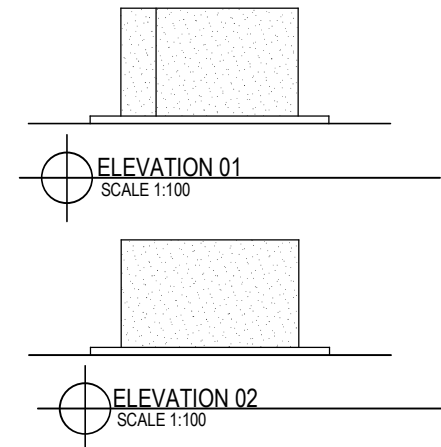
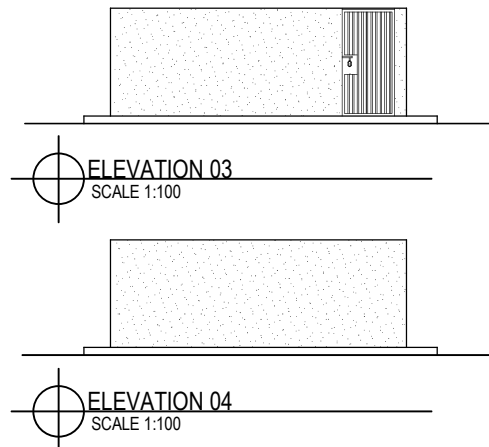
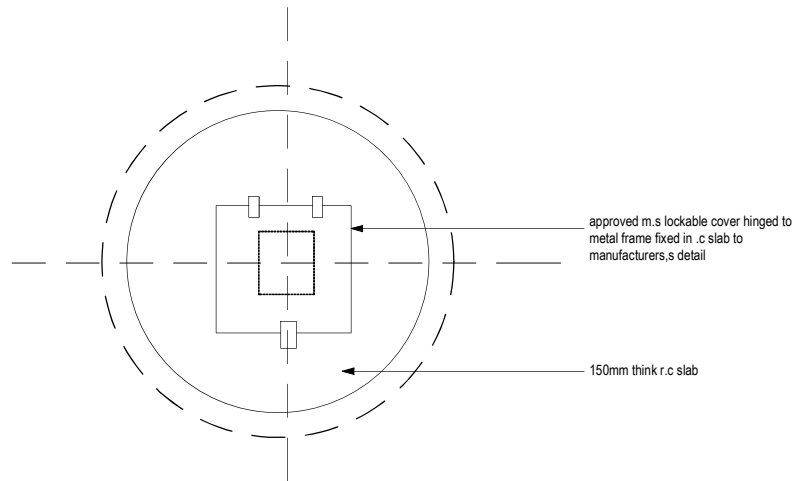
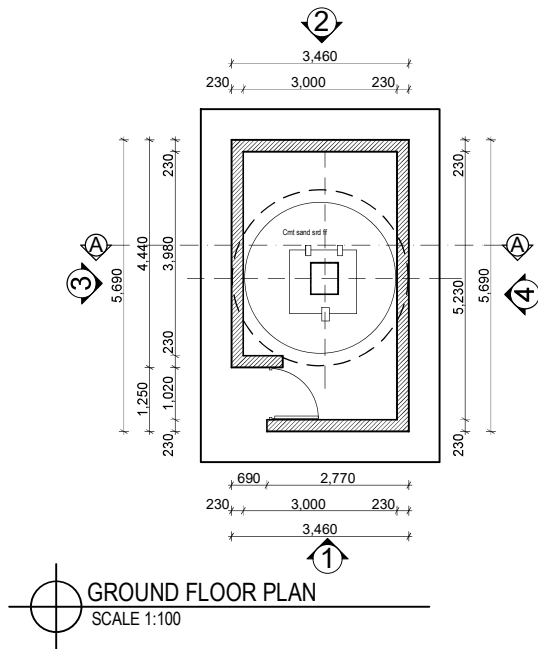
DOOR SCHEDULE		
MARK	D1	D2
ELEVATION		
SIZE(WXH)	900X2100 mm	800X2100 mm
TOTAL No.	01	04
DESCRIPTION	Metallic Steel grille door side hung double swinging thru.900 fixed on Steel frame to detail ,include all accessories. Include door sinage	Timber framed and batteded hardwood door well varnished 40mm thick, side hung swinging thru.900 fixed on a galvanised steel frame.Include door sinage


WINDOW SCHEDULE	
MARK	W1
ELEVATION	
SIZE(WXH)	500X800 MM
TOTAL No.	02
DESCRIPTION	Steel casement window.100x75mm anodised steel section with single 4mm thick clear glazing to Detail Precast concrete Window Cill 240mmW X 75mmH
LOCATION	
STAYS AND FASTENERS	Steel fabricated to Architect's Detail

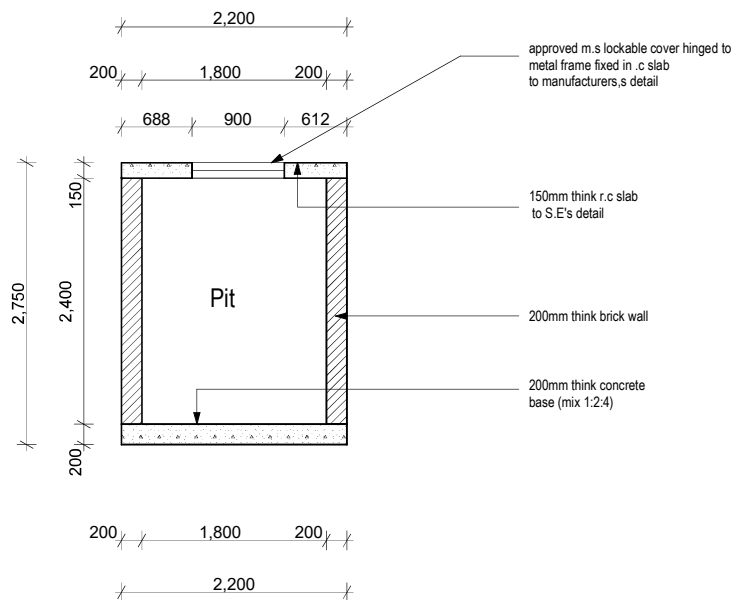
Project Title DESIGN STANDARDS FOR HEALTH FACILITIES Client REPUBLIC OF UGANDA MINISTRY OF HEALTH	CONSULTANTS:		GENERAL NOTES: 1. All Dimensions are in millimeters unless stated otherwise. 2. Do not scale the drawings. In case of any discrepancy, consult the Architect. 3. All External Walls are 230mm, including plaster. 4. Refer to notes for finishes and details. 5. These Drawings are to be read in conjunction with other specialists drawings.	LEGEND: FINISHES: WALLS: 	REVISION NOTES:				Drawing Name:	
	Project Mgrs:	Creations Consult (A) Ltd.			No.	Date	Particulars	Initials	Laundry : Door Schedule	
	Architects:	EDON Consultants Int.							Drawn by:	Date:
	Quantity Surv:	DEC Consultants							NJem	Nov 2013
	Struc. Eng:	Sampar Consulting Engineers							Checked by:	Date:
	M&E Eng:	M&E Associates Ltd.							Matoya Maroria	Nov 2013
	Environ. Eng:	Air Water Earth							Layout ID:	Scale: 1:50
									ARC/MoH/1304	

PROPOSED HEALTH CENTRE IV STANDARD DESIGN

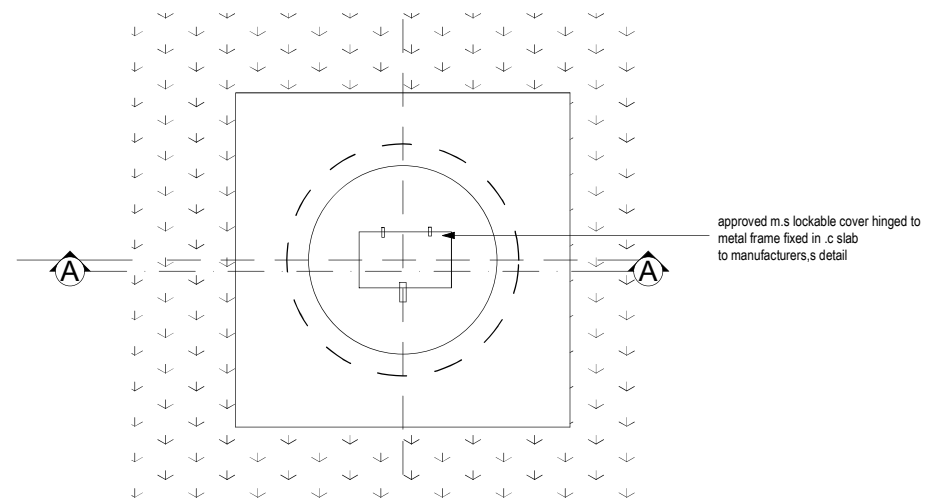
PLACENTA PIT




Project Title:		CONSULTANTS:		GENERAL NOTES:		LEGEND:				REVISION NOTES:				Drawing Name:			
DESIGN STANDARDS FOR HEALTH FACILITIES		Project Mgrs:		Creations Consult (A) Ltd.		1. All Dimensions are in millimeters unless stated otherwise.		FINISHES:				No.		Date		Placenta Pit : Plan, Section, Top Cover Plan, Elevations	
		Architects:		EDON Consultants Int.				1.0 FLOOR 1.1 Unpolished Terrazzo 1.2 Polished Terrazzo 1.3 Cement Screed 2.0 SKIRTING 2.1 Unpolished Terrazzo 2.2 Polished Terrazzo 2.3 Cement Screed 3.0 WALLS 3.1 Silk Vinyl Paint 3.2 Glazed ceramic Tiles 3.3 Roughcast & weather guard paint (External) 4.0 CEILING 4.1 Expanded Metal lath 4.2 Gypsum plaster board 4.3 Open to roof									
Client:		Quantity Surv:		DEC Consultants		2. Do not scale the drawings. In case of any discrepancy, consult the Architect.		WALLS:								Drawn by:	
 REPUBLIC OF UGANDA MINISTRY OF HEALTH		Struc. Eng:		Sampar Consulting Engineers								3. All External Walls are 230mm, including plaster.					
		M&E Eng:		M&E Associates Ltd.		4. Refer to notes for finishes and details.								Nov 2013			
		Environ. Eng:		Air Water Earth		5. These Drawings are to be read in conjunction with other specialists drawings.								Checked by:			
														Matoya Maroria			
																Date:	
																Nov 2013	
																Scale: 1:100, 1:50	
																ARC/MoH/1501	



SECTIONAL DETAIL
SCALE 1:50



TOP PLAN
SCALE 1:50

Project Title:		CONSULTANTS:		GENERAL NOTES:		LEGEND:				REVISION NOTES:				Drawing Name:							
<div>DESIGN STANDARDS FOR HEALTH FACILITIES</div> <div>Client:</div> <div><div>REPUBLIC OF UGANDA MINISTRY OF HEALTH</div></div>		Project Mgrs:	Creations Consult (A) Ltd.	1. All Dimensions are in millimeters unless stated otherwise.		FINISHES: <div><div><div><div>FLOOR</div><div>1.0 2.0 3.0</div><div>1.1 Unpolished Terrazzo 1.2 Polished Terrazzo 1.3 Cement Screed</div></div><div><div>WALL</div><div>2.0 3.0 4.0</div><div>2.1 Unpolished Terrazzo 2.2 Polished Terrazzo 2.3 Cement Screed</div></div><div><div>SKIRTING</div><div>1.0 2.0 3.0</div><div>2.1 Unpolished Terrazzo 2.2 Polished Terrazzo 2.3 Cement Screed</div></div><div><div>CEILING</div><div>4.0</div><div>4.1 Expanded Metal lathe 4.2 Gypsum plaster board 4.3 Open to roof</div></div></div></div>				No.		Date		Particulars		Initials		Medical Waste Pit : Top Plan Cover, Section		Date: Nov 2013	
		Architects:	EDON Consultants Int.	2. Do not scale the drawings. In case of any discrepancy, consult the Architect.		WALLS: <div><div><div><div></div><div>New Walls</div></div><div><div></div><div>Existing Walls to be kept</div></div><div><div></div><div>Existing Walls to be demolished</div></div></div></div>		2.0 SKIRTING 2.1 Unpolished Terrazzo 2.2 Polished Terrazzo 2.3 Cement Screed		3.0 WALLS 3.1 Silk Vinyl Paint 3.2 Glazed ceramic Tiles 3.3 Roughcast & weather guard paint (External)		4.0 CEILING 4.1 Expanded Metal lathe 4.2 Gypsum plaster board 4.3 Open to roof		Checked by: Matoya Maroria		Date: Nov 2013					
		Quantity Surv:	DEC Consultants	3. All External Walls are 230mm, including plaster.		4. Refer to notes for finishes and details.		5. These Drawings are to be read in conjunction with other specialists drawings.						Scale: 1:50							
Struc. Eng:	Sampar Consulting Engineers	4. Refer to notes for finishes and details.		5. These Drawings are to be read in conjunction with other specialists drawings.								ARC/MoH/1601									
M&E Eng:	M&E Associates Ltd.	5. These Drawings are to be read in conjunction with other specialists drawings.																			
Environ. Eng:	Air Water Earth																				