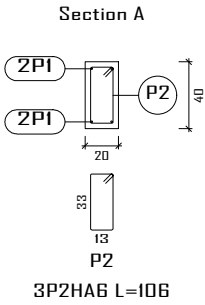
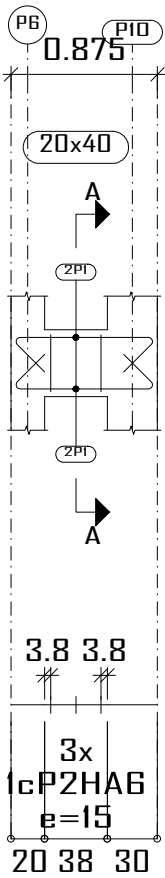
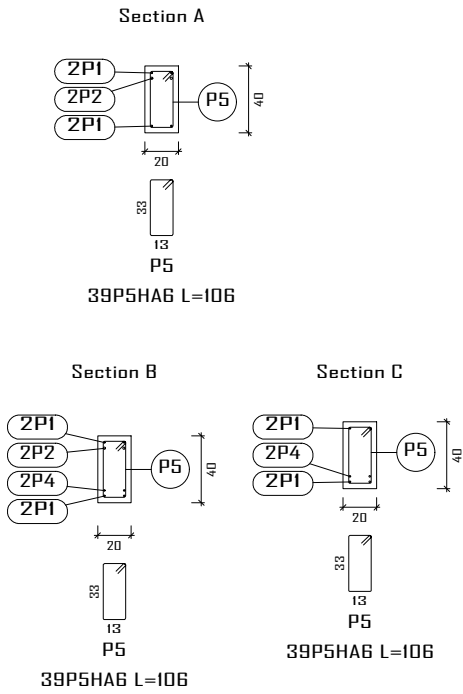
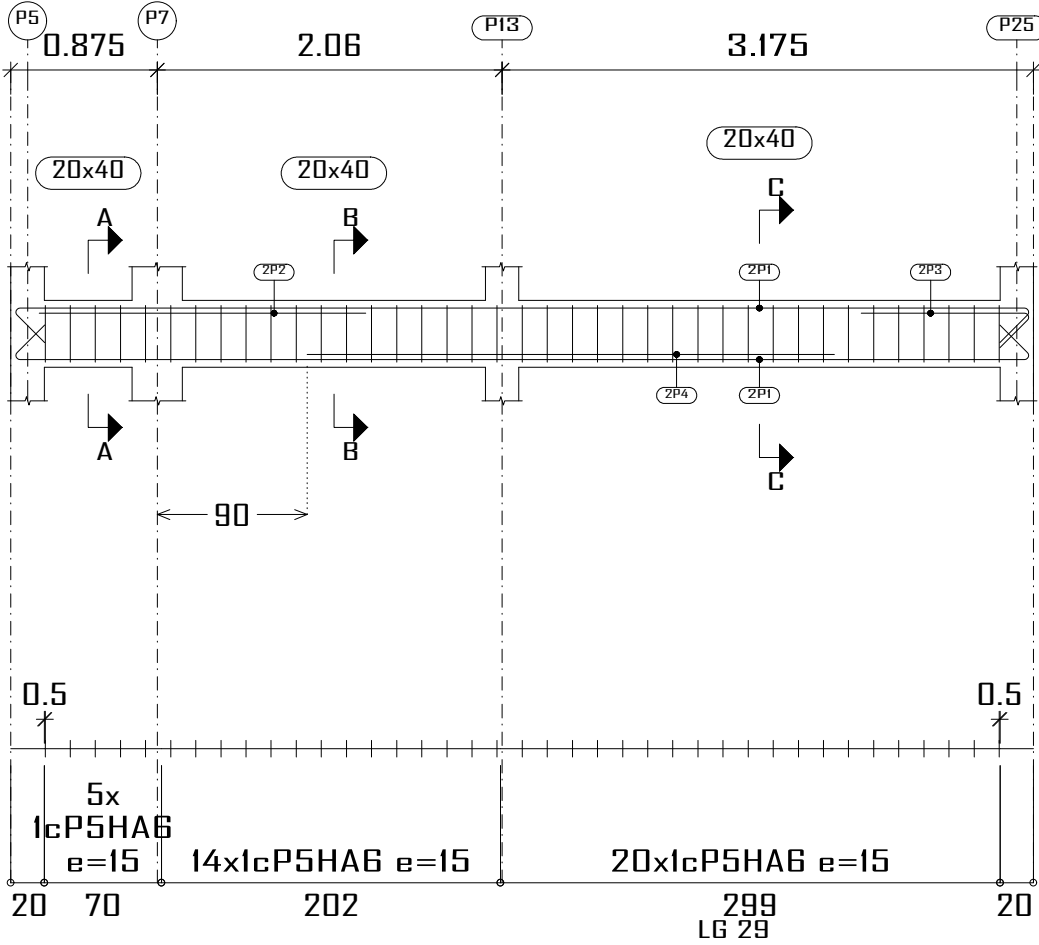
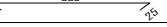
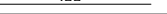

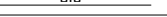

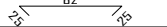
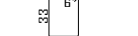


PB-RDC
Plan de ferrailage des poutres
Béton: B25
Acier des barres: Fe E400
Acier des cadres: Fe E400
Échelle portiques 1:40
Échelle sections 1:40
Échelle réservation 1:20

LG 23



Élément	Pos.	Diam.	No.	Schéma (cm)	Long. (cm)	Total (cm)	Fe E400 (kg)
LG 23	1	HA10	4		655	2620	16.2
	2	HA12	2		195	390	3.5
	3	HA10	2		125	250	1.5
	4	HA10	2		315	630	3.9
	5	HAG	39		106	4134	9.2
	Total+10%:						
LG 29	1	HA10	4		132	528	3.3
	2	HAG	3		106	318	0.7
	Total+10%:						
HAG: HA10: HA12: Total:							10.9 27.4 3.8 42.1

Etudes diagnostiques et technique de constructions ou d'extensions / réhabilitations d'infrastructures en vue de l'amélioration des soins de santé et de la qualité des services SOST dans les districts sanitaires de Boromo et de Dédougou, dans la région de la Boucle du Mouhoun au Burkina Faso

A3

BLOC OPERATOIRE CMA BOROMO: 14-Plan de ferrailage des longrines

Maitre d'ouvrage: ENABEL

Avant projet détaillé

11/07/2025

N° plan: 14/17

Echelle:

Dr.-Ing C. HEMA (IGC N° 709) & Ing. S. SALASSI

