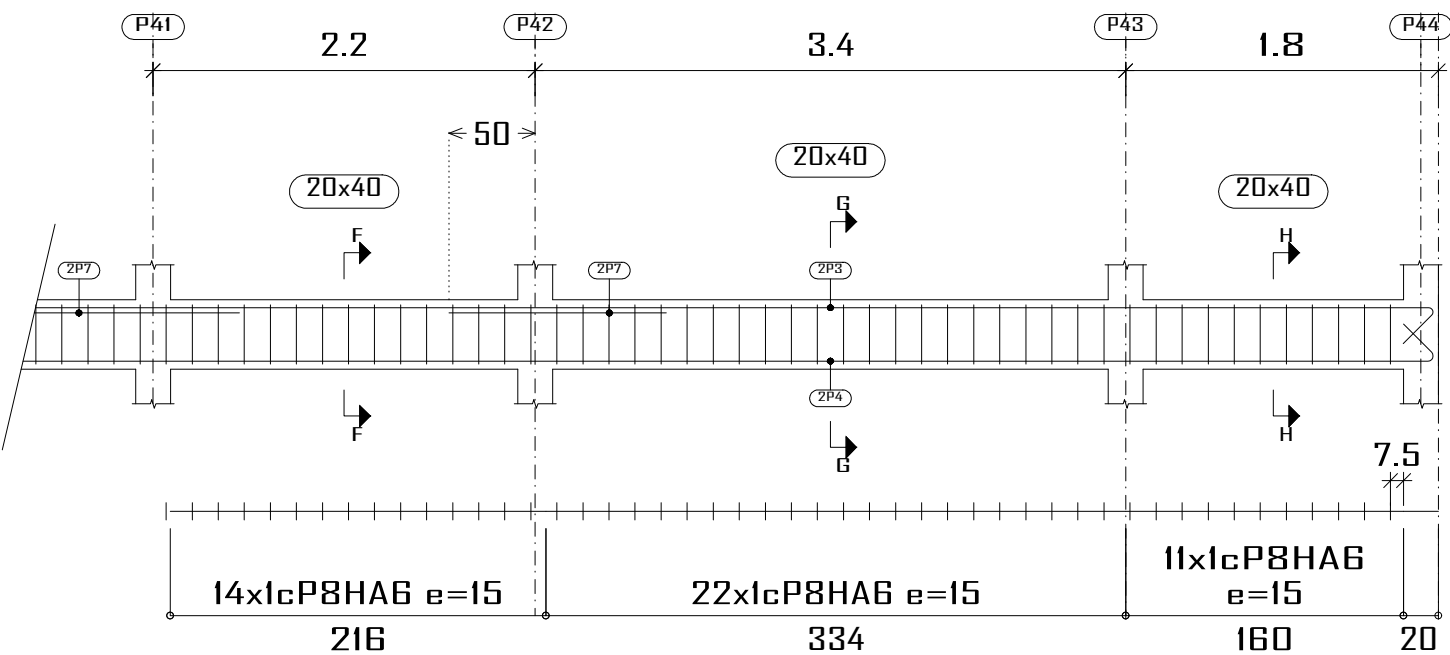
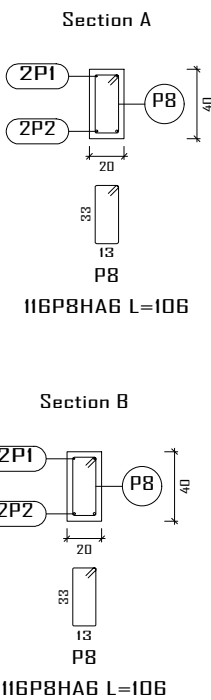
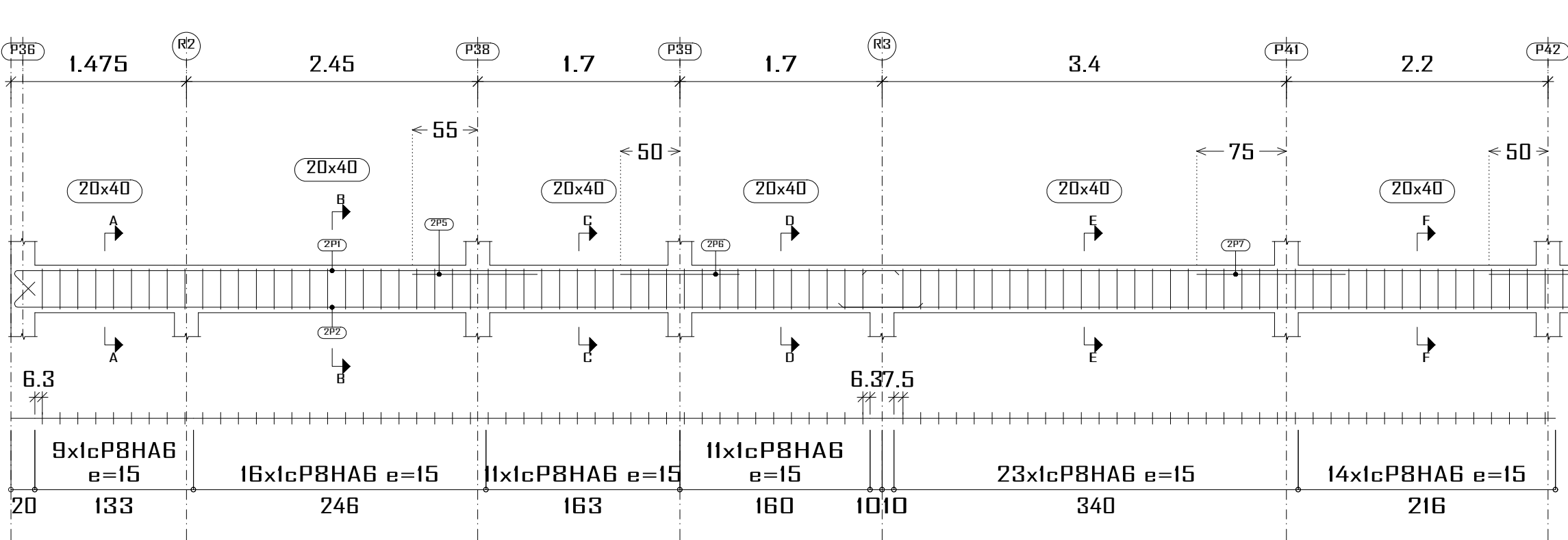


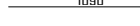
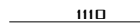
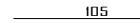





Pt 4



**PH-RDC**  
Plan de ferrailage des poutres  
Béton: B25  
Acier des barres: Fe E400  
Acier des cadres: Fe E400  
Échelle portiques 1:40  
Échelle sections 1:40  
Échelle réservation 1:20

Élément	Pos.	Diam.	No.	Schéma (cm)	Long. (cm)	Total (cm)	Fe E400 (kg)
Pt 4	1	HA10	2		765	1530	9.4
	2	HA12	2		785	1570	13.9
	3	HA10	2		1115	2230	13.7
	4	HA12	2		1135	2270	20.2
	5	HA10	2		105	210	1.3
	6	HA10	2		100	200	1.2
	7	HA10	4		125	500	3.1
	8	HAB	117		106	12402	27.5
	Total+10%:						99.3
HAB:						30.2	
HA10:						31.6	
HA12:						37.5	
Total:						99.3	

Construction, extension, réhabilitation d'infrastructures sanitaires à Boromo et Dédougou

Bloc opératoire CMA BOROMO Plan de ferrailage poutre PH-RDC

Maitre d'ouvrage ENABEL

Avant Projet Détaillé

12/07/2025

N° plan :

Echelle : 1/50

Dr.-Ing. Césaire HEMA (IGC N°709) & Ing. Simon SALASSI

