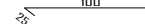

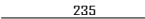
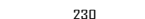
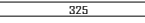
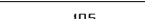


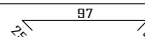
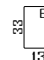
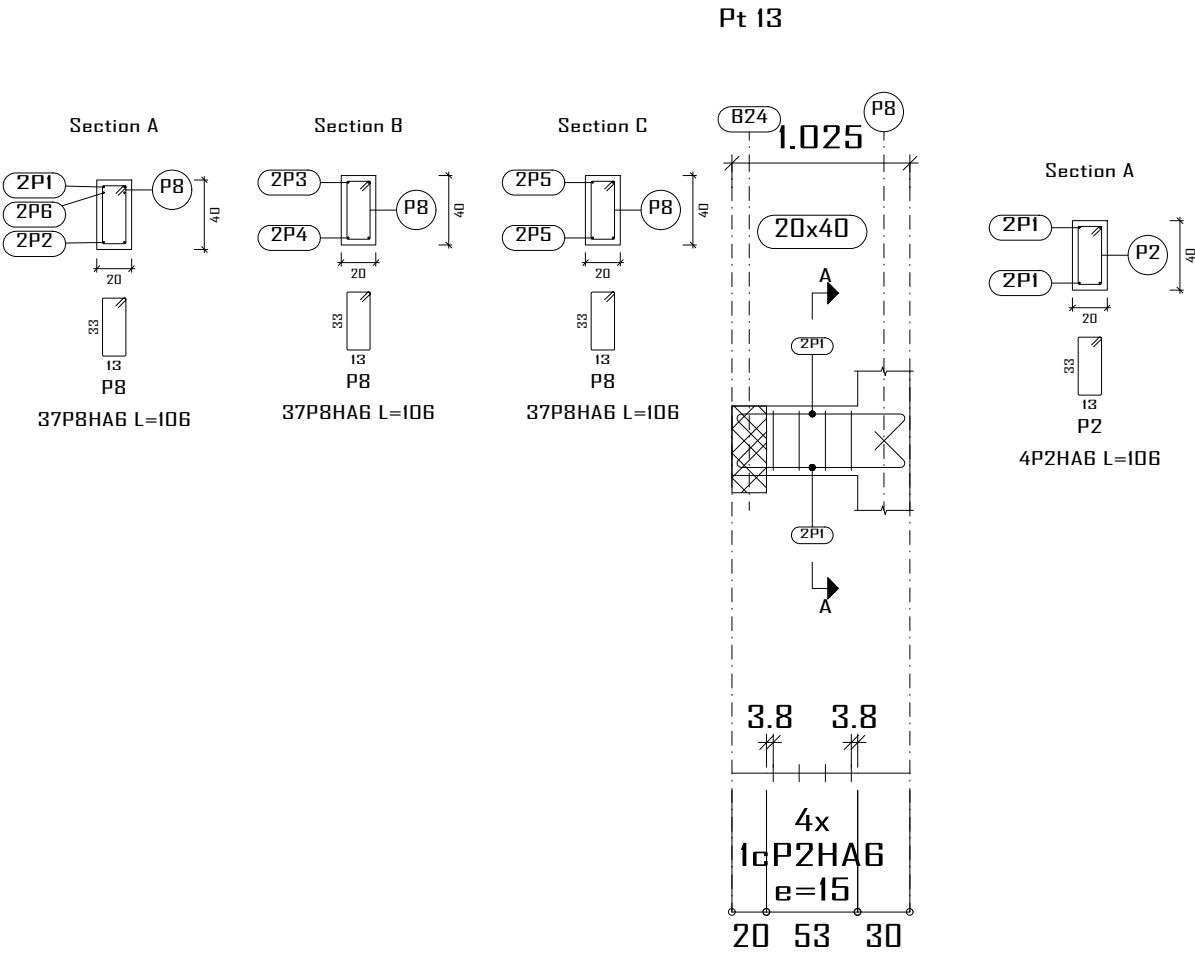
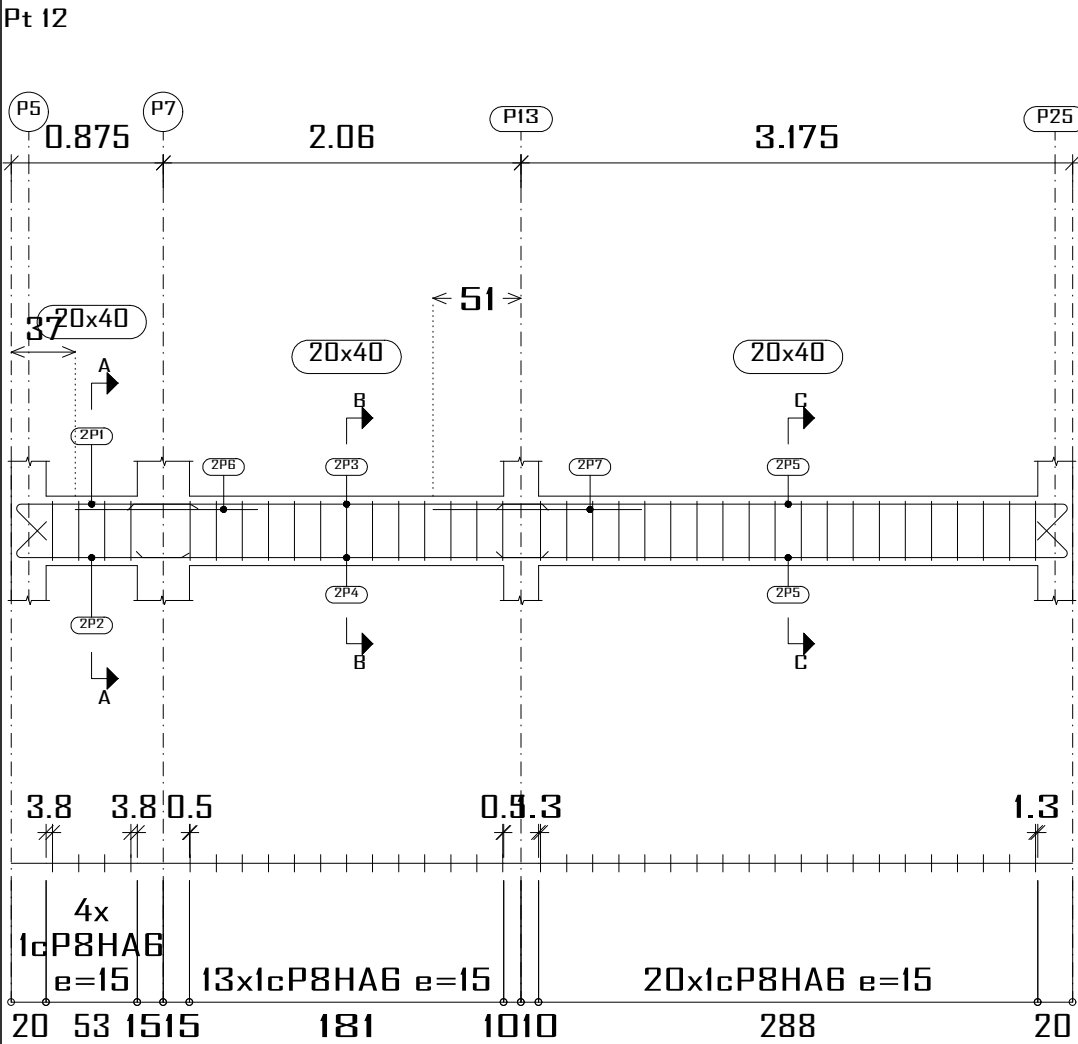


Élément	Pos.	Diam.	No.	Schéma (cm)	Long. (cm)	Total (cm)	Fe E400 (kg)
Pt I2	1	HA10	2		125	250	1.5
	2	HA10	2		120	240	1.5
	3	HA10	2		235	470	2.8
	4	HA10	2		230	460	2.8
	5	HA10	4		350	1400	8.6
	6	HA10	2		105	210	1.3
	7	HA10	2		120	240	1.5
	8	HA6	37		106	3922	8.7
Total+10%:							31.7
Pt I3	1	HA10	4		147	588	3.6
	2	HA6	4		106	424	0.9
	Total+10%:						
						HA6: HA10: Total:	10.6 26.1 36.7



PH-RDC
Plan de ferrailage des poutres
Béton: B25
Acier des barres: Fe E400
Acier des cadres: Fe E400
Échelle portiques 1:40
Échelle sections 1:40
Échelle réservation 1:20

Construction, extension, réhabilitation d'infrastructures sanitaires à Boromo et Dédougou		
Bloc opératoire CMA BOROMO		Plan de ferrailage poutre PH-RDC
Maitre d'ouvrage: ENABEL		Avant Projet Détaillé 12/07/2025
N° plan :	Echelle : 1/50	Dr.-Ing. Césaire HEMA (IGC N°709) & Ing. Simon SALASSI

