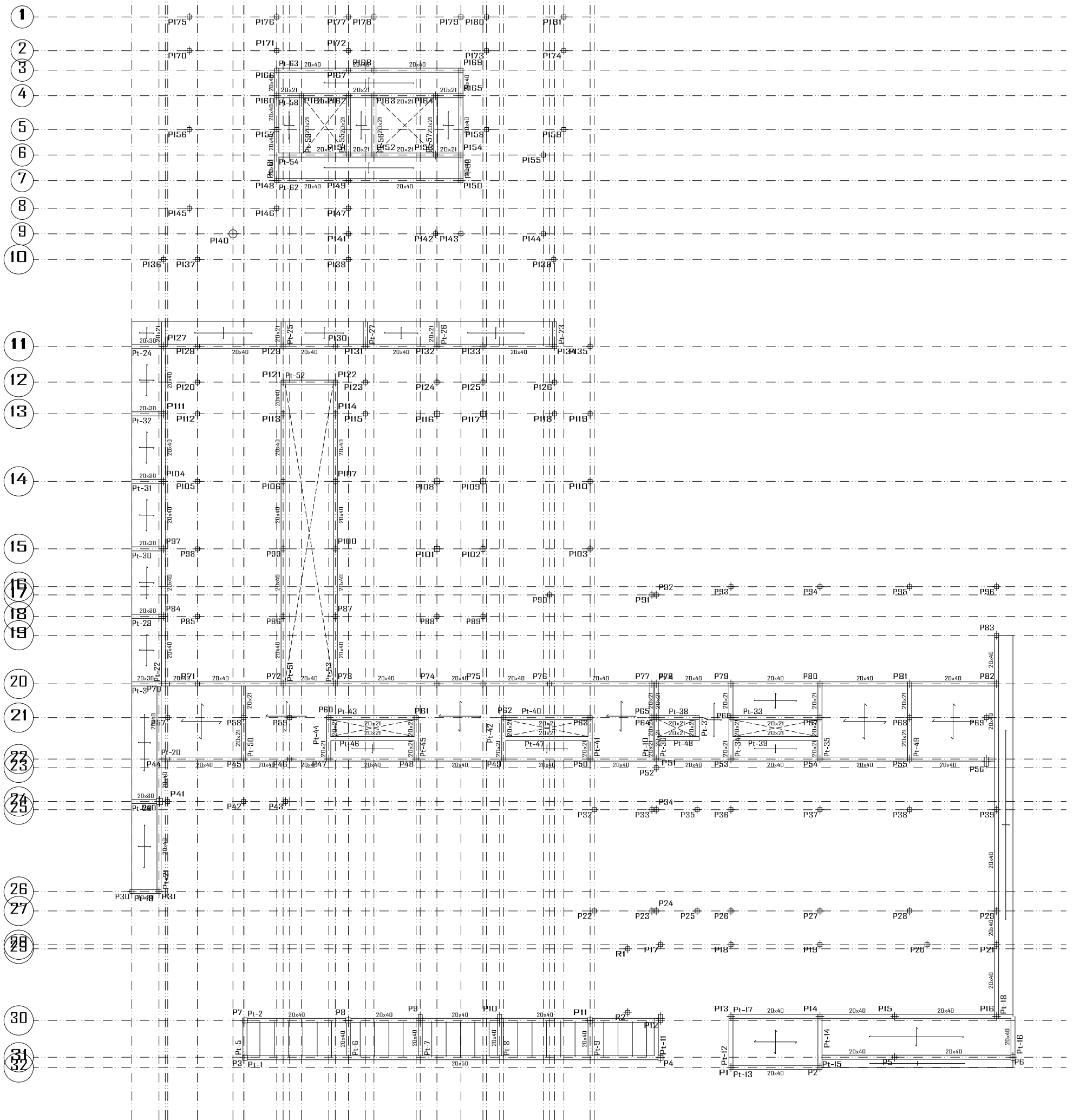


The diagram shows the letters A through Z arranged in a circular pattern. The letters are grouped into overlapping circles as follows: A, B, C, D, E, F, G, H, I, J, K, L, M, N, O, P, Q, R, S, T, U, V, W, X, Y, Z. The letters are arranged in a circular pattern, with some letters grouped together in overlapping circles.



Nervure pour corps creux: Inf 2HA8 Sup 1HA8

Dalle pleine e=15cm cadrillage HA10 esp=15cm