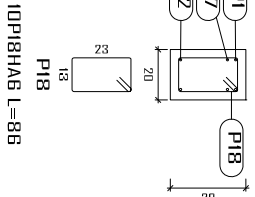
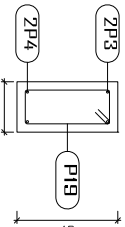


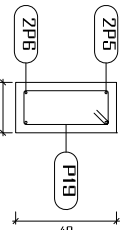
Section A



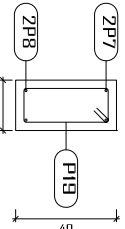
Section B



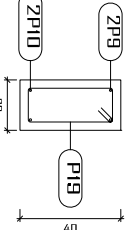
Section C



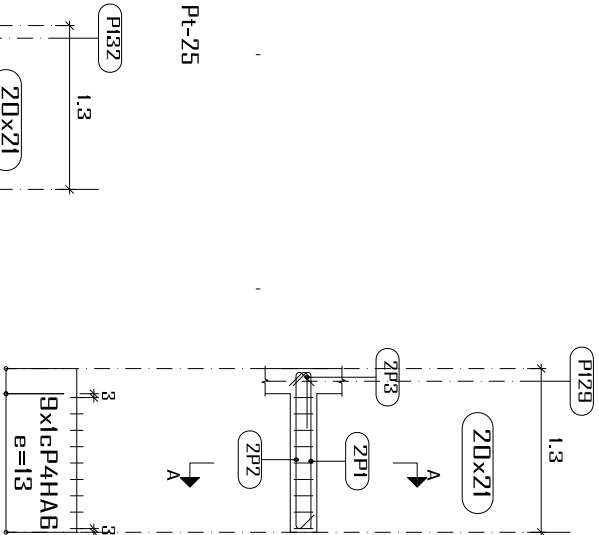
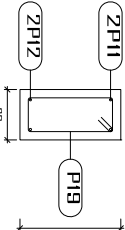
Section D



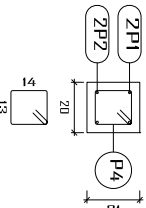
Section E



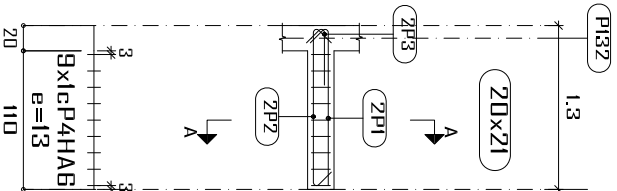
Section F



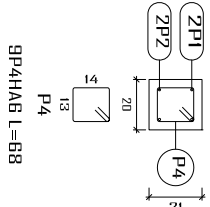
Section A



9P4HA6 L=68



Section A



9P4HA6 L=68

Élément	Pos. Diam. No.	Schéma (cm)	Long. (cm)	Total Fe E400 (kg)
Pt-23	1	HA10 2	210	420
	2	HA10 2	185	370
	3	HA10 2	236	470
	4	HA10 2	210	420
	5	HA10 2	490	980
	6	HA10 2	440	880
	7	HA10 2	325	650
	8	HA10 2	275	550
	9	HA10 2	220	440
	10	HA10 2	170	340
	11	HA10 2	420	840
	12	HA10 2	370	740
	13	HA10 2	295	590
	14	HA10 2	245	490
	15	HA10 2	420	840
	16	HA10 2	365	730
	17	HA10 2	165	330
	18	HA6 10	86	1.9
Total+10%:				101.9
HA6:				38.3
HA10:				78.2
Total:				114.5