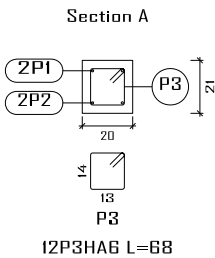
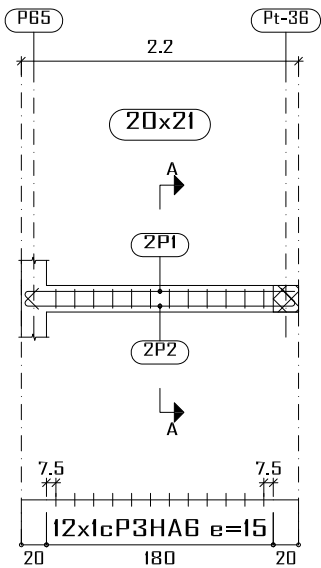
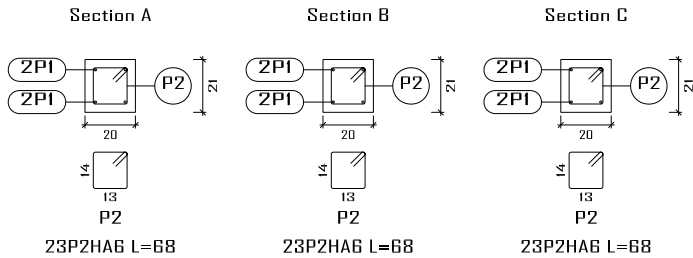
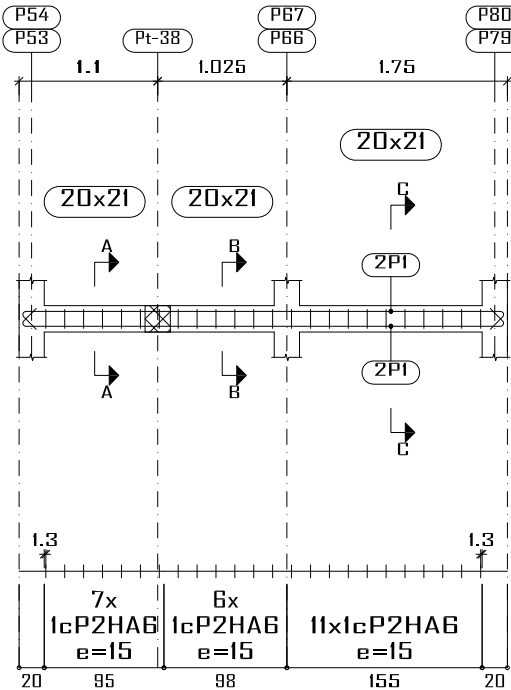


Pt-37



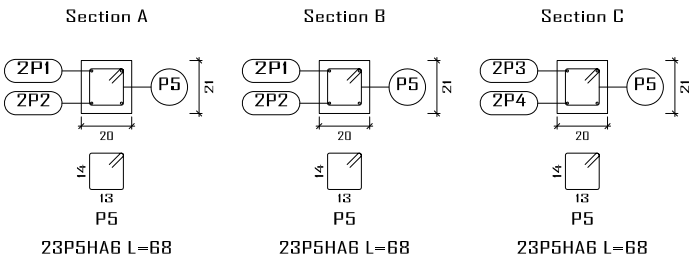
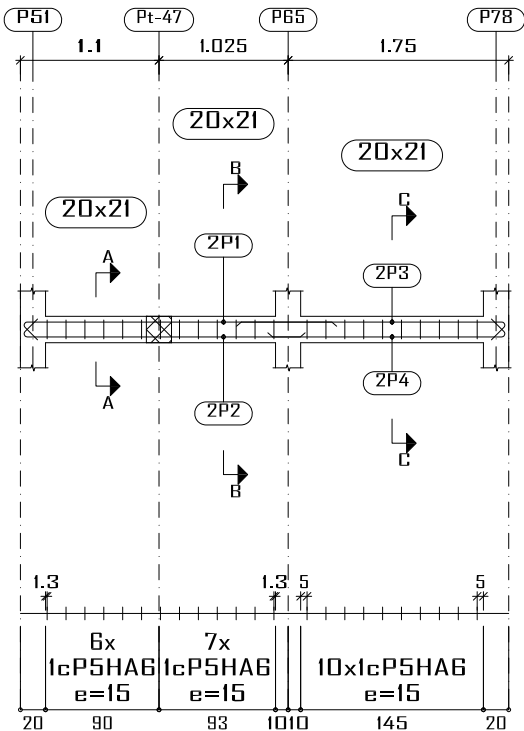
Élément	Pos.	Diam.	No.	Schéma (cm)	Long. (cm)	Total (cm)	Fe E400 (kg)
Pt-33=Pt-34	1	HA10	4		413	1652	10.2
	2	HA6	24		68	1632	3.6
	Total+10%: (x2):						15.2 30.4
Pt-35	1	HA10	2		260	520	3.2
	2	HA10	2		235	470	2.8
	3	HA10	2		225	450	2.8
	4	HA10	2		200	400	2.5
	5	HA6	23		68	1564	3.5
	Total+10%:						16.4
Pt-36	1	HA10	2		117	234	1.4
	2	HA10	2		148	286	1.8
	3	HA6	6		68	408	0.9
	Total+10%:						4.5
Pt-37	1	HA10	2		230	460	2.8
	2	HA10	2		246	492	3.0
	3	HA6	12		68	816	1.8
	Total+10%:						8.4
						HA6:	14.9
						HA10:	44.8
						Total:	59.7

Pt-33  
Pt-34

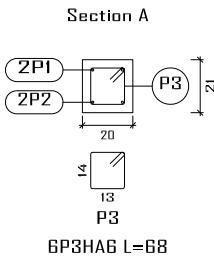
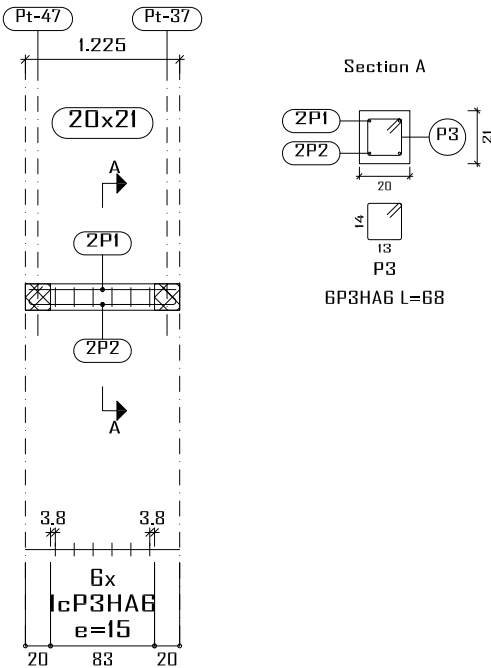


Dallage niveau +3.50  
Plan de ferrailage des poutres  
Béton: B25  
Acier des barres: Fe E400  
Acier des cadres: Fe E400  
Échelle portiques 1:60  
Échelle sections 1:30  
Échelle réservation 1:30

Pt-35



Pt-36



Construction, extension, réhabilitation d'infrastructures sanitaires à Boromo et Dédougou

Maternité de Boromo et Centre Onco-Burkina Faso  
Plan de ferrailage des poutres niveau +3.50

Maitre d'ouvrage: ENABEL

Avant Projet Détaillé

17/07/2025

N° plan :

Echelle : 1/100

Dr.-Ing. Césaire HEMA (IGC N°709)

