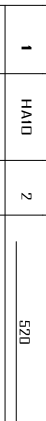
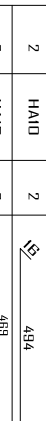
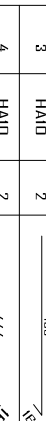
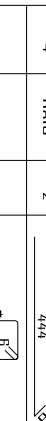
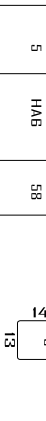
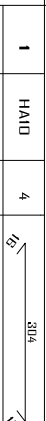
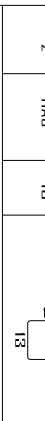
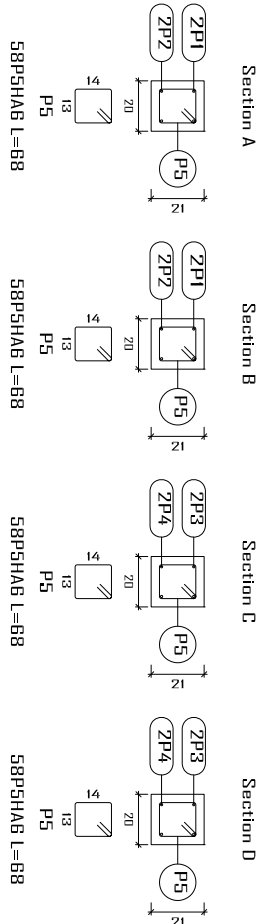
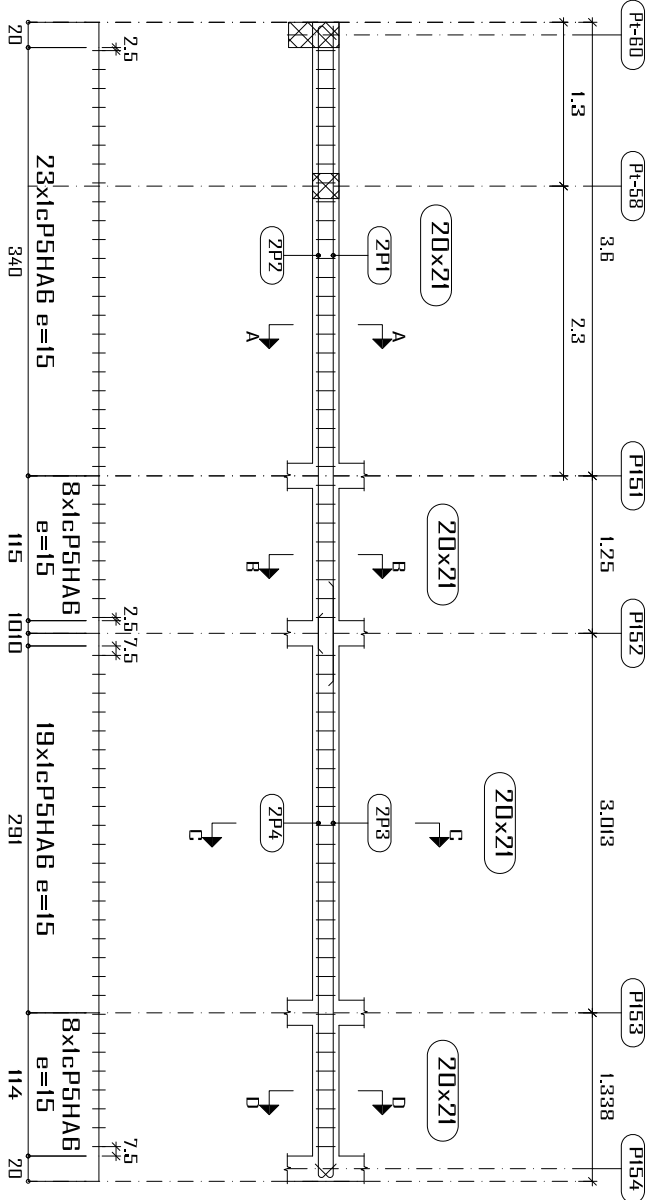


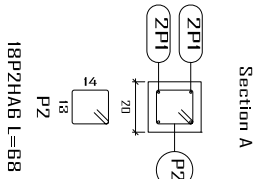
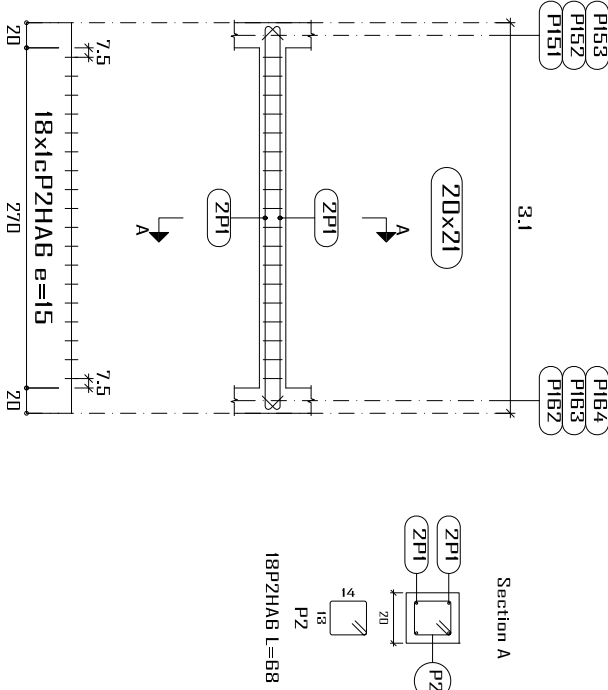
Dallage niveau +3.50
Plan de ferrailage des poutres
Béton: B25
Acier des barres: Fe E400
Acier des cadres: Fe E400
Échelle portiques 1:60
Échelle sections 1:30
Échelle réservation 1:30

Élément	Pos.	Diam.	No.	Schéma (cm)	Long. (cm)	Total Fe E400 (kg)
Pt-53	1	HA10	2		520	6,4
	2	HA10	2		510	6,3
	3	HA10	2		485	6,0
	4	HA10	2		460	5,7
	5	HA6	58		68	8,8
Total+10%:						36,5
Pt-54+Pt-55+Pt-56	1	HA10	4		336	8,3
	2	HA6	18		68	2,7
	Total+10%: (x3):					
HA6:						18,7
HA10:						54,1
Total:						72,8

Pt-53



Pt-54
Pt-55
Pt-56



Construction, extension, réhabilitation d'infrastructures sanitaires à Boromo et Dédougou		
Maternité de Boromo et Centre Onco de ferrailage des poutres niveau +3.50		
Maitre d'ouvrage: NABEL		Avant Projet Détaillé
N° plan : Echelle : 1/100		Dr.-Ing. Césaire HEMA (IGC N°709)
G5 ASSOCIATES		