
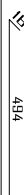

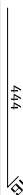
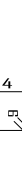


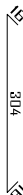
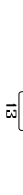

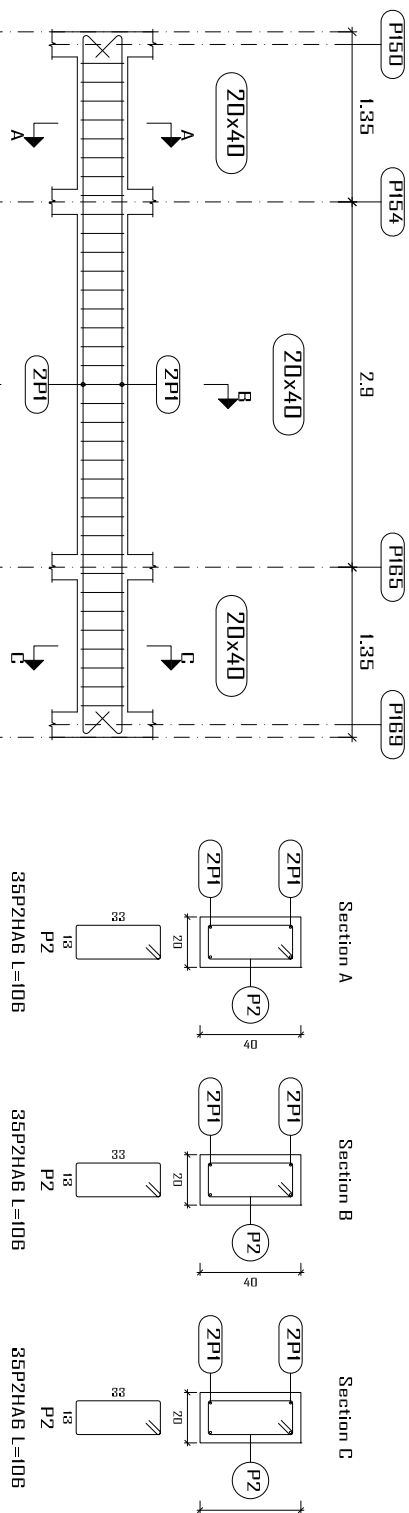
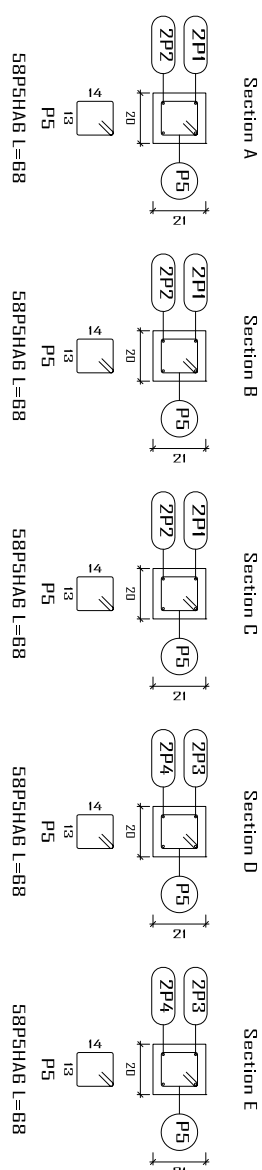
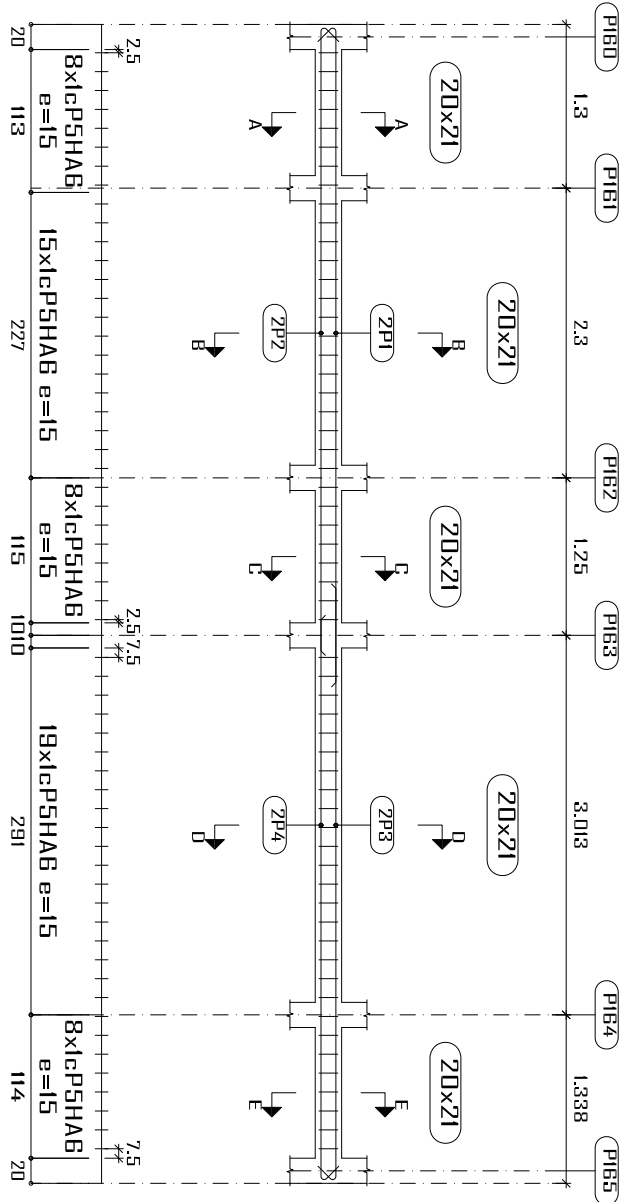
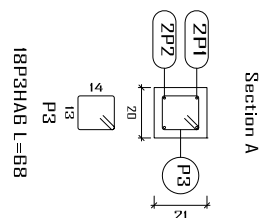
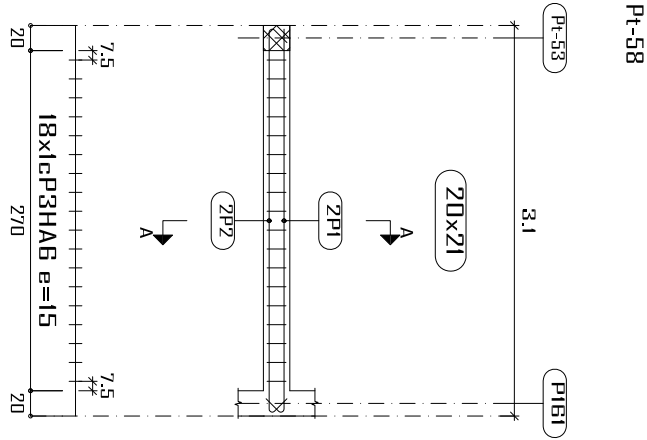
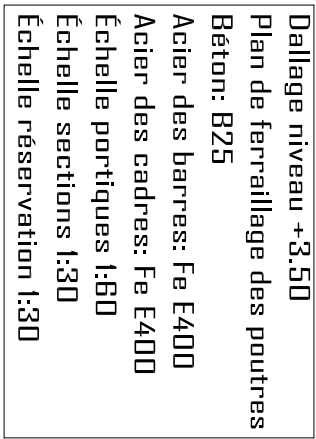



Élément	Pos.	Diam.	No.	Schéma (cm)	Long. (cm)	Total Fe E400 (kg)	
Pr-57	1	HA10	2		535	10770	6,6
	2	HA10	2		510	10220	6,3
	3	HA10	2		485	9770	6,0
	4	HA10	2		460	9220	5,7
	5	HA6	58		68	3944	8,8
	Total+10%:				36,7		
Pr-58	1	HA10	2		320	640	3,9
	2	HA10	2		336	672	4,1
	3	HA6	18		68	1224	2,7
	Total+10%:				11,8		
Pr-58	1	HA10	4		604	2416	14,9
	2	HA6	36		106	3710	8,2
		Total+10%:				25,4	
	HA6:				216		
	HA10:				523		
	Total:				73,9		



Construction, extension, réhabilitation d'infrastructures sanitaires à Boromo et Dedougou		
Maternité de Boromo et Centre d'accouchement de ferrailage des poutres niveau +3,50 A3		
Maitre d'ouvrage: ENABEL	Avant Projet Détaillé 17/07/2025	
N° plan :	Echelle : 1/100	Dr.-Ing. Césaire HEMA (IGC N°709)