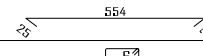

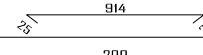
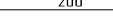

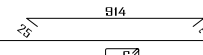

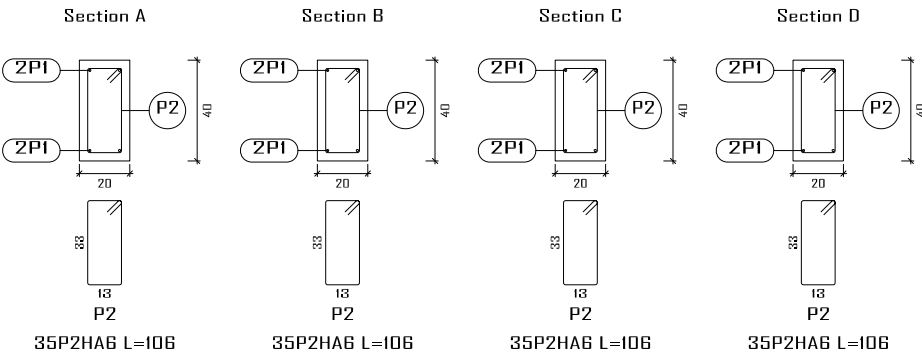
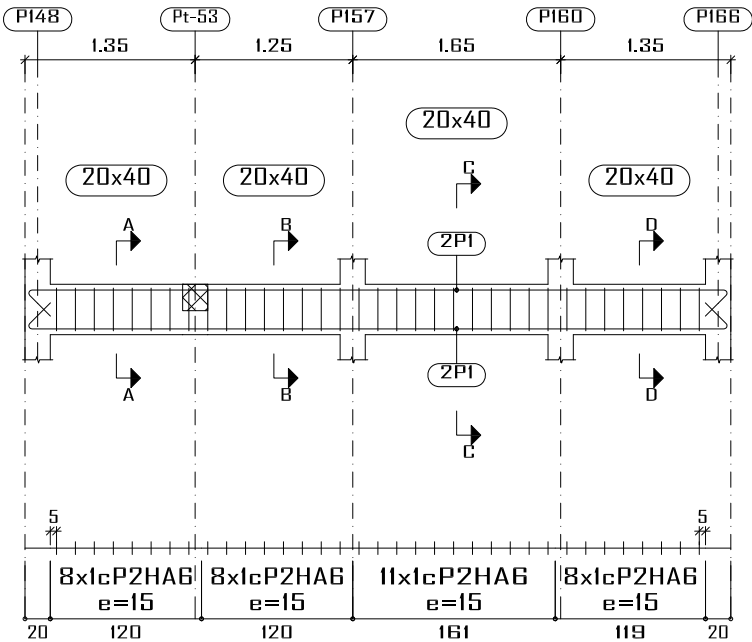


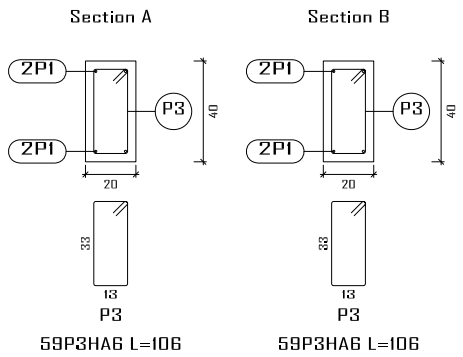
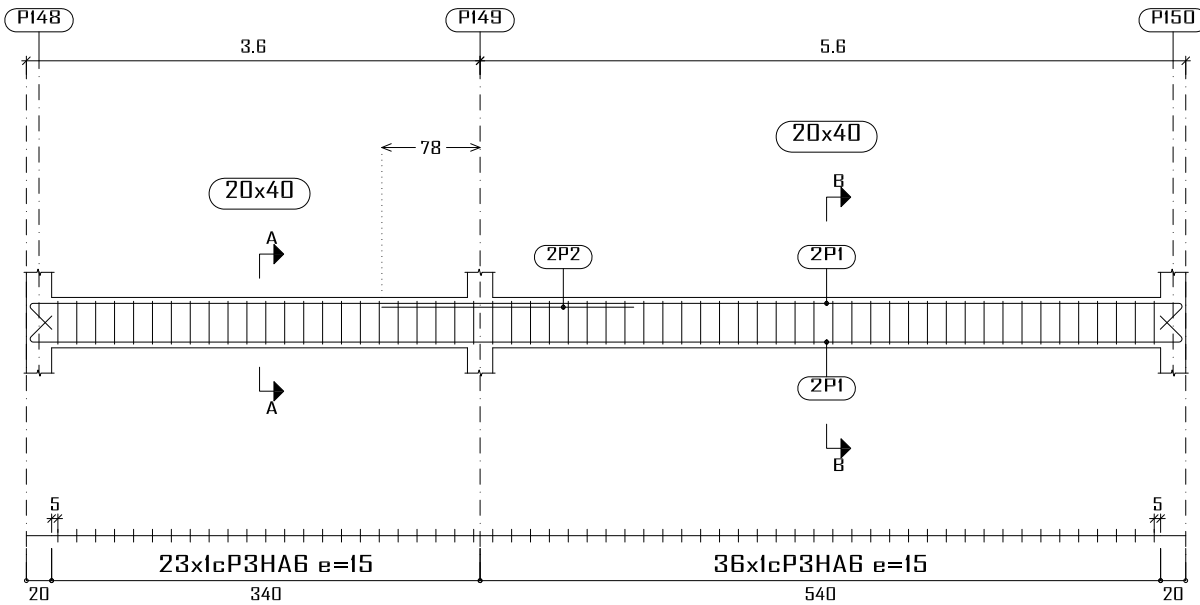
Dallage niveau +3.50
Plan de ferrailage des poutres
Béton: B25
Acier des barres: Fe E400
Acier des cadres: Fe E400
Échelle portiques 1:60
Échelle sections 1:30
Échelle réservation 1:30

Élément	Pos.	Diam.	No.	Schéma (cm)	Long. (cm)	Total (cm)	Fe E400 (kg)
Pt-60	1	HA10	4		554	2416	14.9
	2	HA6	35		106	3710	8.2
	Total+10%:						25.4
Pt-61	1	HA10	4		914	3856	23.8
	2	HA10	2		200	400	2.5
	3	HA6	59		106	6254	13.9
	Total+10%:						44.2
Pt-62	1	HA10	4		914	3856	23.8
	2	HA6	59		106	6254	13.9
	Total+10%:						41.5
						HA6:	39.6
						HA10:	71.5
						Total:	111.1

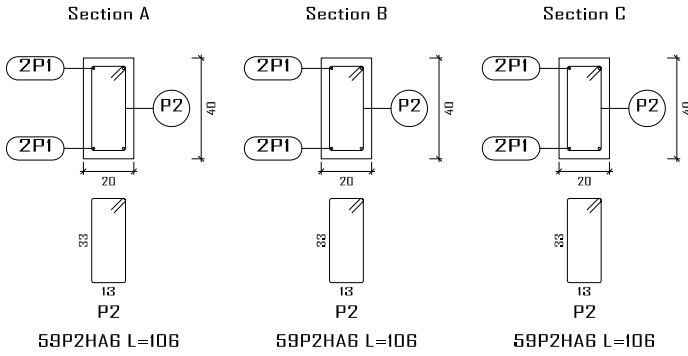
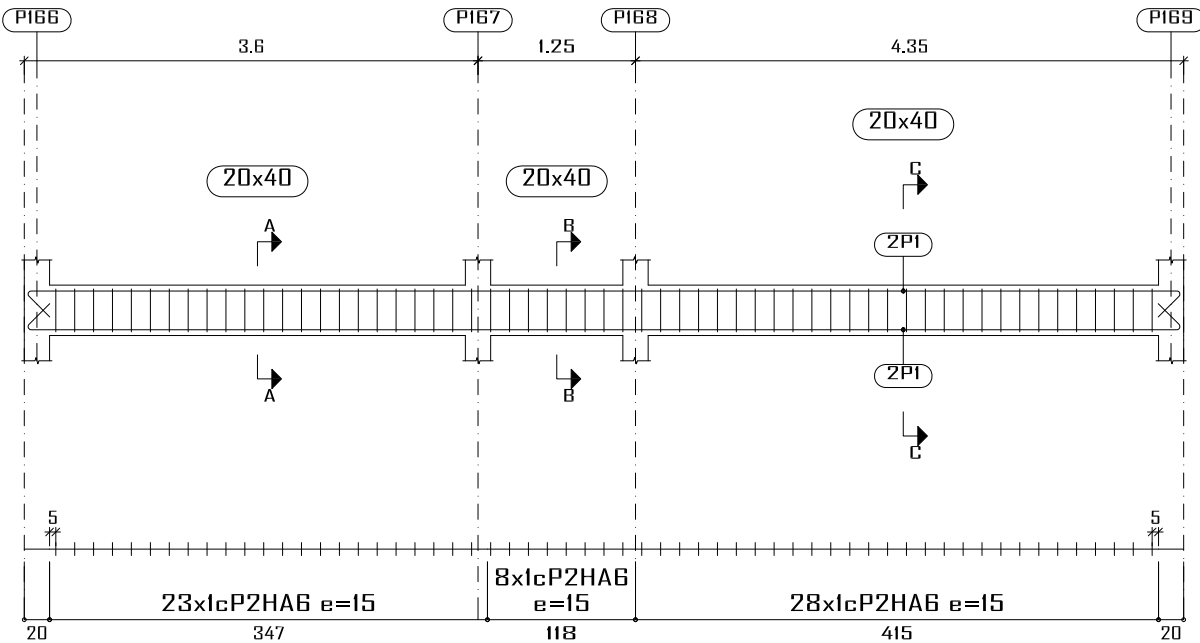
Pt-60



Pt-61



Pt-62



Construction, extension, réhabilitation d'infrastructures sanitaires à Boromo et Dédougou

Maternité de Boromo et Centre Onco-Boromo

Maitre d'ouvrage: ENABEL

Avant Projet Détaillé

17/07/2025

N° plan :

Echelle : 1/100

Dr.-Ing. Césaire HEMA (IGC N°709)

