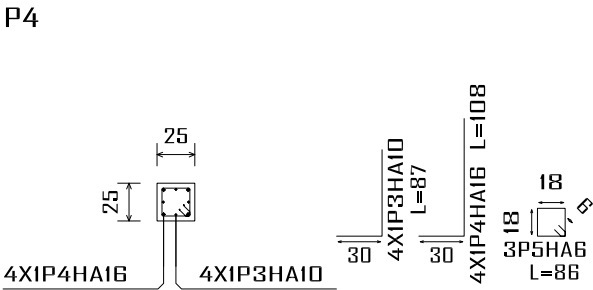
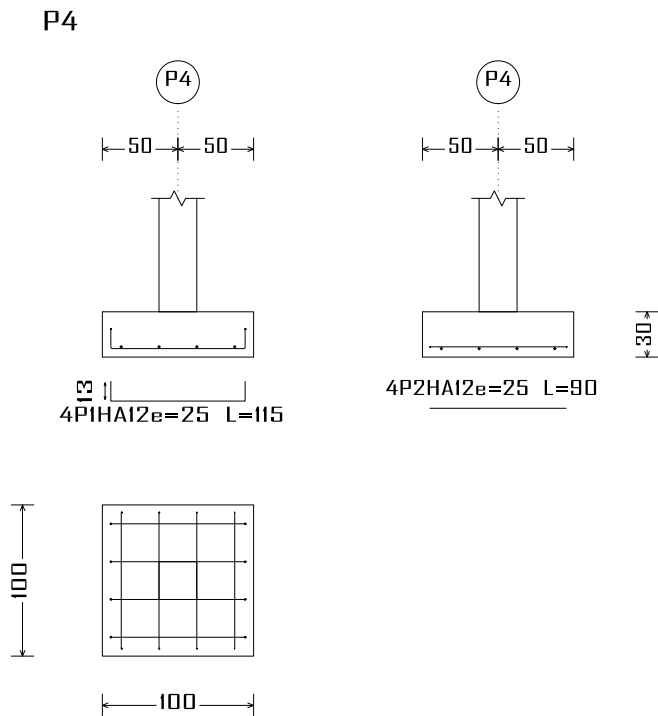
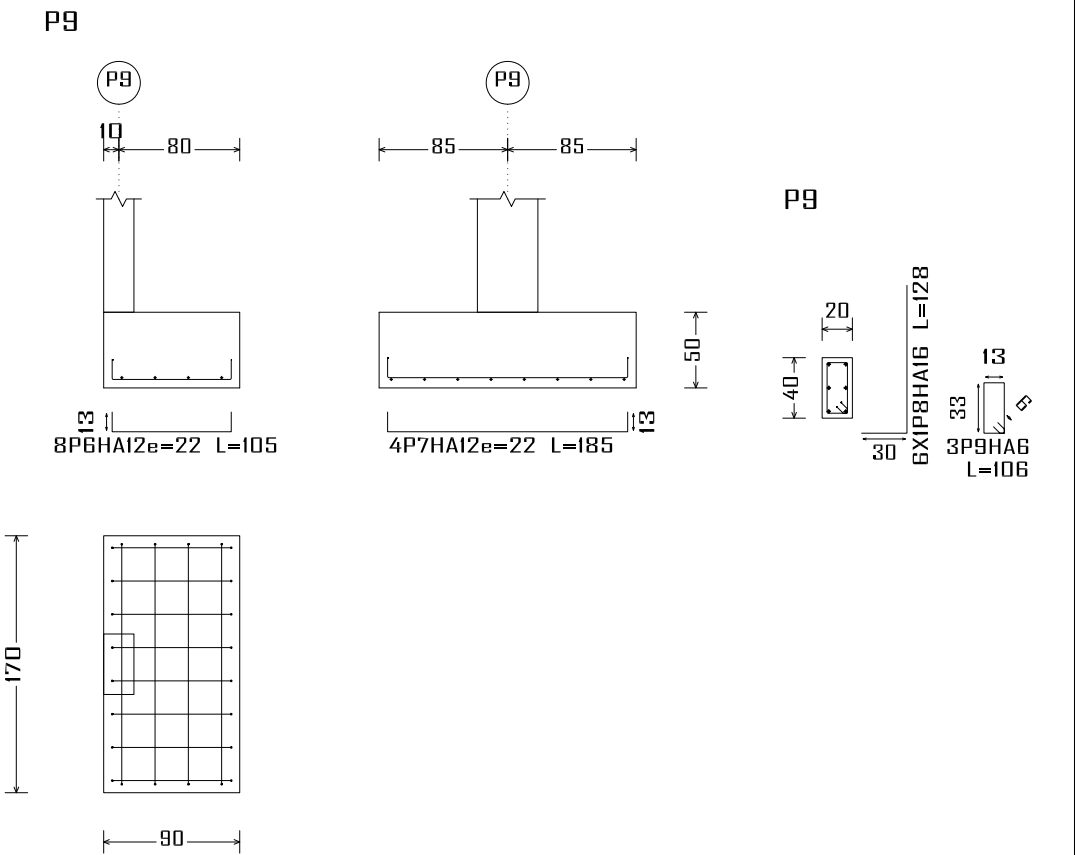



TABLE DES ÉLÉMENTS DE FONDATION						
Références	Dimensions (cm)	Épaisseur (cm)	Armature inf. X	Armature inf. Y	Armature sup. X	Armature sup. Y
P1, P2, P4, P14, P15, P16, P29, P35, P39, P73, P76, P79, P80, P81, P86, P87, P88, P90, P93, P94, P95, P100, P101, P102, P107, P108, P109, P110, P128, P137, P140, P144, P155, P156, P158, P159, P175 et P181	100x100	30	4HA12e=25	4HA12e=25		
P5, P25, P103, P142, P143 et P145	100x100	30	4HA12e=25	4HA12e=25		
P6	120x120	30	5HA12e=25	5HA12e=25		
P8	345x175	80	7HA16e=25	14HA16e=25	7HA16e=25	14HA16e=25
P9	90x170	50	8HA12e=22	4HA12e=22		
R1	70x45	50	2HA12e=22	3HA12e=22		
R2	70x45	50	2HA12e=22	3HA12e=22		
P10	85x170	50	8HA12e=22	4HA12e=22		
P11	315x160	75	10HA12e=15	21HA12e=15	10HA12e=15	21HA12e=15
P12 et P22	60x120	50	5HA12e=22	3HA12e=22		
P13, P60 et P63	80x80	50	4HA12e=22	4HA12e=22		
P17	45x90	50	4HA12e=22	2HA12e=22		
P18	70x70	50	3HA12e=22	3HA12e=22		
P19, P20, P21, P27, P28, P36, P37, P38, P45, P53, P54, P55, P57, P58, P67, P68, P69, P71, P72, P75, P82, P83, P84, P85, P89, P96, P97, P98, P104, P105, P111, P112, P114, P115, P116, P117, P118, P119, P120, P121, P122, P123, P124, P125, P126, P130, P131, P132, P133, P134, P135, P139, P146, P147, P148, P149, P150, P151, P152, P153, P154, P160, P161, P162, P163, P164, P165, P166, P167, P168, P169, P170, P171, P172, P173, P174, P176, P177, P178, P179 et P180	80x80	30	3HA12e=25	3HA12e=25		
P26	80x80	30	3HA12e=25	3HA12e=25		
P32	50x90	50	4HA12e=22	2HA12e=22		
P40	45x70	30	3HA12e=25	2HA12e=25		
P41	45x70	50	3HA12e=22	2HA12e=22		
P42	70x70	50	3HA12e=22	3HA12e=22		
P43	45x70	50	3HA12e=22	2HA12e=22		
P44 et P70	90x70	30	3HA12e=25	4HA12e=25		
P46	70x45	40	2HA12e=25	3HA12e=25		
P47	90x50	50	2HA12e=22	4HA12e=22		
P48 et P50	100x50	50	2HA12e=22	4HA12e=22		
P49	120x60	30	2HA12e=25	5HA12e=25		
P56	70x95	30	4HA12e=25	3HA12e=25		
P59	80x80	30	3HA12e=25	3HA12e=25		
P61	90x90	50	4HA12e=22	4HA12e=22		
P62	80x80	40	3HA12e=25	3HA12e=25		
P66	80x80	30	3HA12e=25	3HA12e=25		
P74	100x100	30	4HA12e=25	4HA12e=25		
P99	80x80	30	3HA12e=25	3HA12e=25		
P106	80x80	30	3HA12e=25	3HA12e=25		
P113	80x80	30	3HA12e=25	3HA12e=25		
P127	80x80	30	3HA12e=25	3HA12e=25		
P129	80x80	30	3HA12e=25	3HA12e=25		
P136	120x120	30	5HA12e=25	5HA12e=25		
P138	80x80	30	3HA12e=25	3HA12e=25		
P141	80x80	30	3HA12e=25	3HA12e=25		
P157	80x80	30	3HA12e=25	3HA12e=25		
(P3-P7)	325x255	60	14HA12e=18	18HA12e=18		
(P23-P24) et (P33-P34)	95x70	50	3HA12e=22	4HA12e=22		
(P30-P31)	205x205	50	9HA12e=22	9HA12e=22	9HA12e=22	9HA12e=22
(P51-P52)	115x115	30	5HA12e=25	5HA12e=25		
(P65-P64), (P78-P77) et (P81-P82)	105x80	30	3HA12e=25	4HA12e=25		

Élément	Pos.	Diam.	No.	Long. (cm)	Total (cm)	Fe E400 (kg)
P4	1	HA12	4	115	460	4.1
	2	HA12	4	90	360	3.2
	3	HA10	4	87	348	2.1
	4	HA16	4	108	432	6.8
	5	HA6	3	86	258	0.6
	Total+10%:					18.5
P8	6	HA12	8	105	840	7.5
	7	HA12	4	185	740	6.6
	8	HA16	6	128	768	12.1
	9	HA6	3	106	318	0.7
	Total+10%:					28.6
					HA6:	1.5
					HA10:	2.3
					HA12:	23.5
					HA16:	20.8
					Total:	48.1

Récapitulatif Acier Fondations		Long. total (m)	Poids+10% (kg)	Total
Plan de ferrailage fondation				
Fe E400	HA6	396.2	97	2950
	HA8	201.3	87	
	HA10	28.5	19	
	HA12	2308.9	2255	
	HA16	283.3	492	



Construction, extension, réhabilitation d'infrastructures sanitaires à Boromo et Dédougou			
Maternité de Boromo et Centre Onco		<b>Plan de ferrailage des semelles</b> A3	
<b>Maitre d'ouvrage: ENABEL</b>		<b>Avant Projet Détaillé</b> 17/07/2025	
N° plan :	Echelle : 1/100	Dr.-Ing. Césaire HEMA (IGC N°709)	