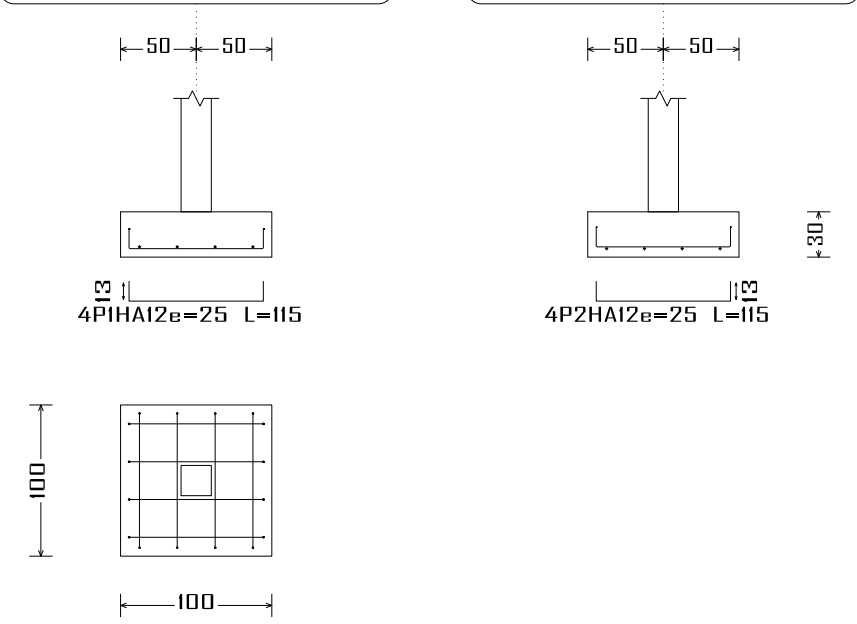


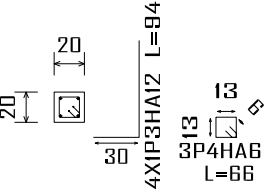
P5, P25, PI03, PI42, PI43 et PI45

P5, P25, PI03, PI42, PI43 et PI45

P5, P25, PI03, PI42, PI43 et PI45

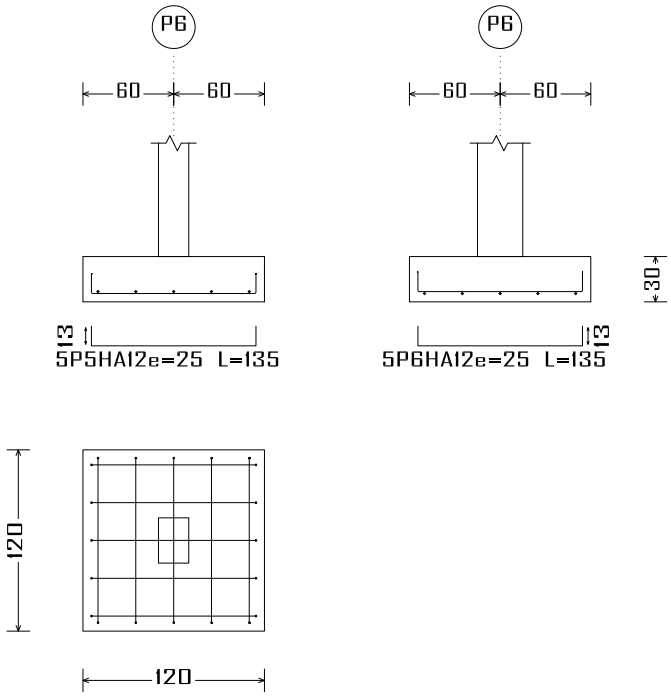


P5, P25, PI03, PI42, PI43 et PI45

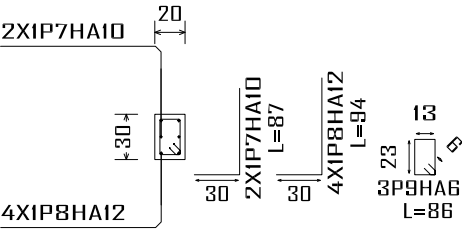


Récapitulatif Acier Fondations		Long. total (m)	Poids+10% (kg)	Total
Plan de ferrailage fondation				
Fe E400	HA6	396.2	97	
	HA8	201.3	87	
	HA10	28.5	19	
	HA12	2308.9	2255	
	HA16	283.3	492	

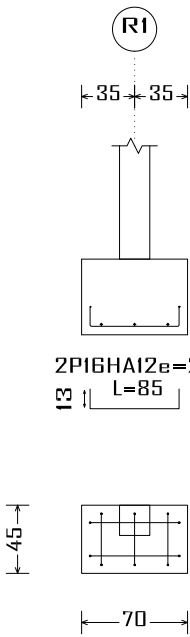
P6



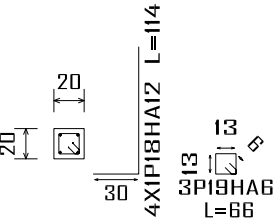
P6



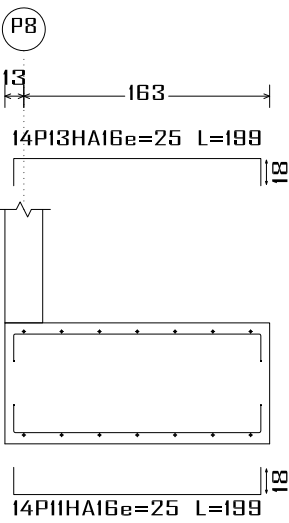
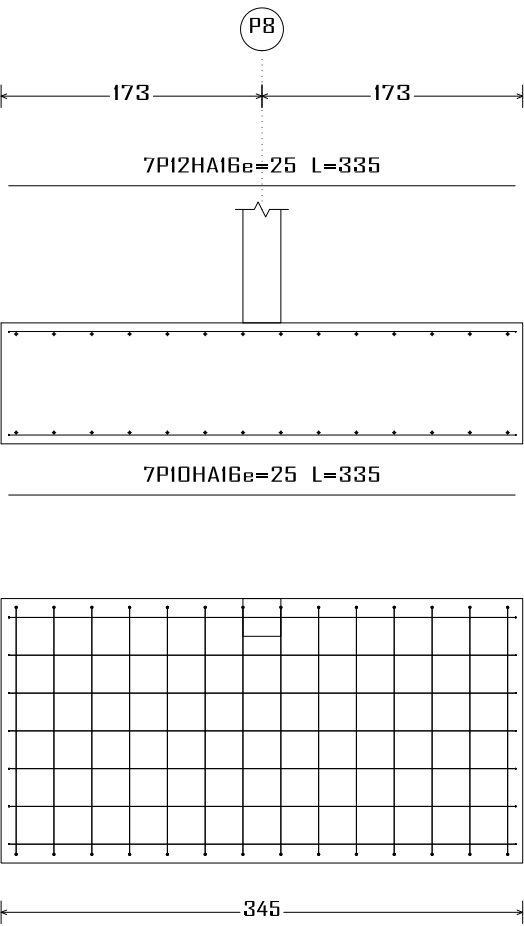
R1



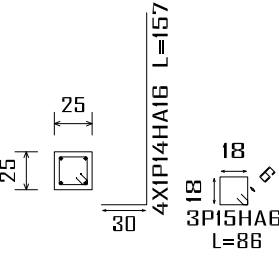
R1



P8



P8



Construction, extension, réhabilitation d'infrastructures sanitaires à Boromo et Dédougou

Maternité de Boromo et Centre Onco

Maitre d'ouvrage: ENABEL

N° plan :

Echelle : 1/100

Avant Projet Détaillé

Dr.-Ing. Césaire HEMA (IGC N°709)

A3

17/07/2025



Élément

Pos.

Diam.

No.

Long. (cm)

Total (cm)

Fe E400 (kg)

P5=P25=PI03=PI42=PI43
PI45

1
2
3
4

HA12
HA12
HA12
HA6

4
4
4
3

115
115
84
66

480
480
376
198

4.1
4.1
3.3
0.4

Total+10%:
(x6):

13.1
78.6

P6

5
6
7
8
9

HA12
HA12
HA10
HA12
HA6

5
5
2
4
3

135
135
87
84
86

675
675
174
376
258

6.0
6.0
1.1
3.3
0.6

Total+10%:

18.7

P8

10
11
12
13
14
15

HA16
HA16
HA16
HA16
HA16
HA6

7
14
7
14
4
3

335
199
335
199
157
86

2345
2786
2345
2786
628
258

37.0
44.0
37.0
44.0
9.9
0.6

Total+10%:

189.8

R1

16
17
18
19

HA12
HA12
HA12
HA6

2
3
4
3

85
60
114
66

170
180
456
188

1.5
1.6
4.0
0.4

Total+10%:

8.3

HA6:

4.3

HA10:

1.2

HA12:

100.8

HA16:

189.1

Total:

285.4