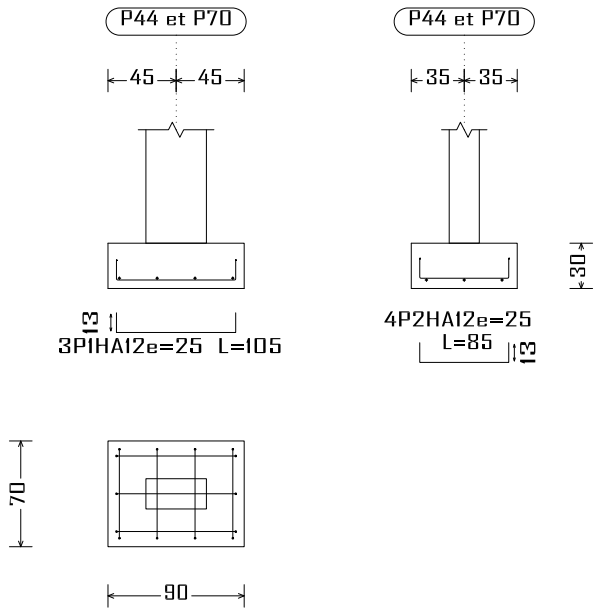
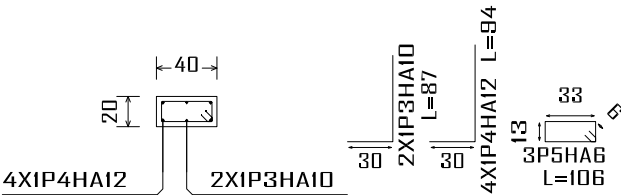


P44 et P70

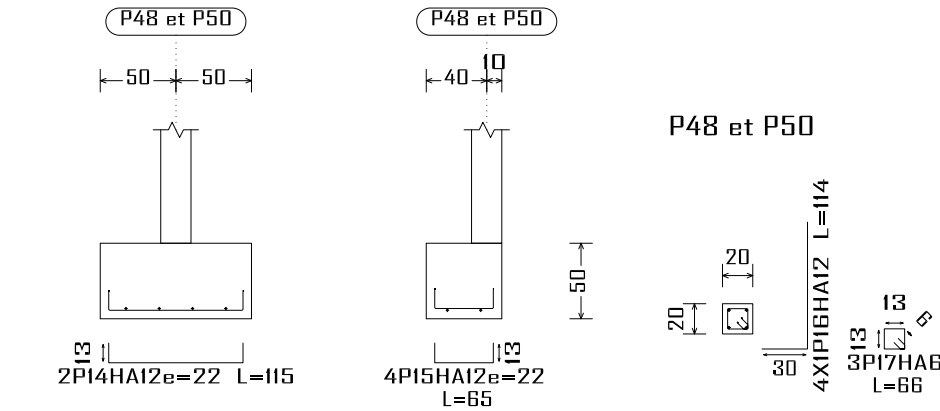


P44 et P70

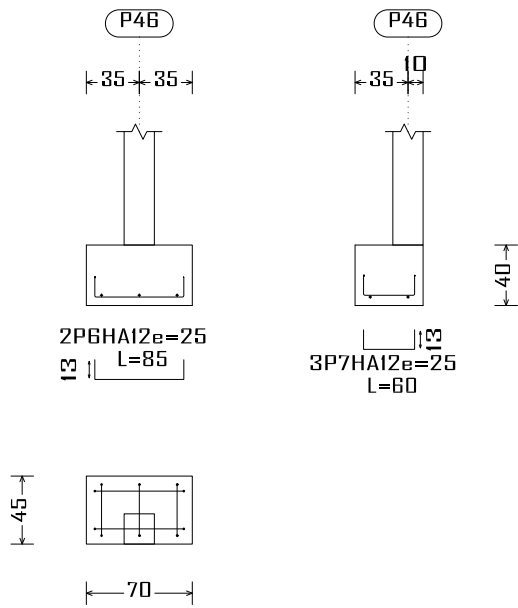


Récapitulatif Acier Fondations		Long. total (m)	Poids+10% (kg)	Total
Plan de ferrailage fondation	HA6	396.2	97	2950
	HA8	201.3	87	
	HA10	28.5	19	
	HA12	2308.9	2255	
	HA16	283.3	492	

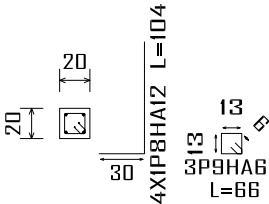
P48 et P50



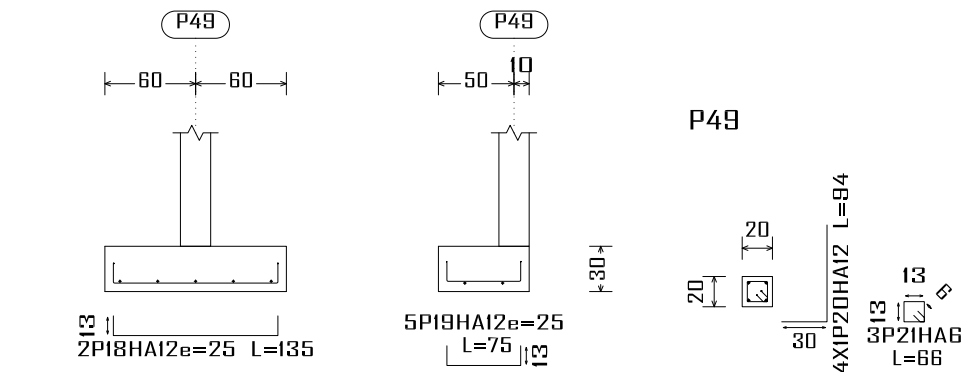
P46



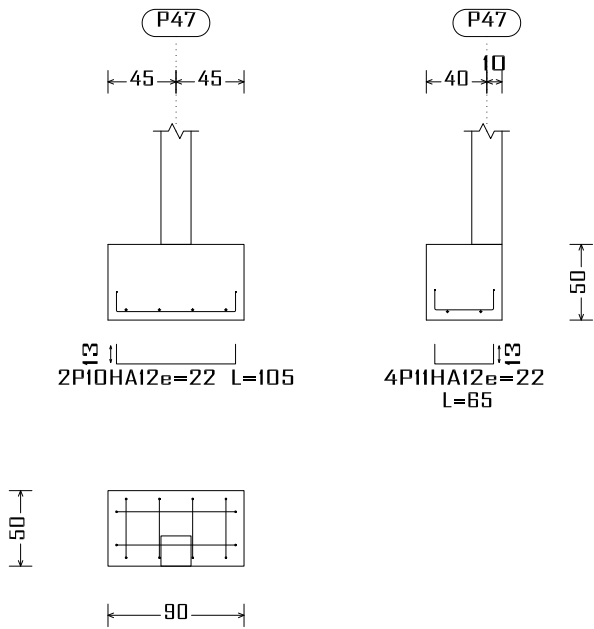
P46



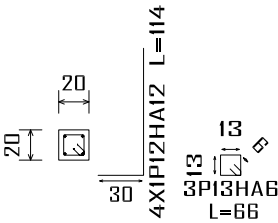
P49



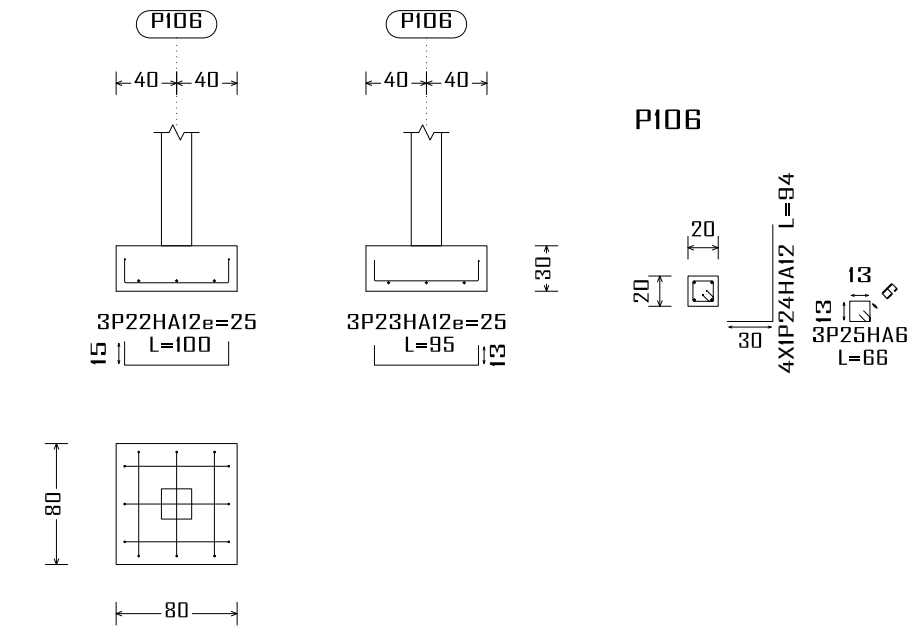
P47



P47



PI06



Construction, extension, réhabilitation d'infrastructures sanitaires à Boromo et Dédougou

Maternité de Boromo et Centre Onco-Burkina

Maitre d'ouvrage: ENABEL

N° plan :

Echelle : 1/100

Avant Projet Détaillé

Dr.-Ing. Césaire HEMA (IGC N°709)

A3

17/07/2025



Élément	Pos.	Diam.	No.	Long. (cm)	Total (cm)	Fe E400 (kg)
P44=P70	1	HA12	3	105	315	2.8
	2	HA12	4	85	340	3.0
	3	HA10	2	87	174	1.1
	4	HA12	4	94	376	3.3
	5	HA6	3	106	318	0.7
Total+10%: (x2):						12.0 24.0
P46	6	HA12	2	85	170	1.5
	7	HA12	3	60	180	1.6
	8	HA12	4	104	416	3.7
	9	HA6	3	66	198	0.4
Total+10%:						7.8
P47	10	HA12	2	105	210	1.9
	11	HA12	4	65	260	2.3
	12	HA12	4	114	456	4.0
	13	HA6	3	66	198	0.4
Total+10%:						9.5
P48=P50	14	HA12	2	115	230	2.0
	15	HA12	4	65	260	2.3
	16	HA12	4	114	456	4.0
	17	HA6	3	66	198	0.4
Total+10%: (x2):						9.6 19.2
P49	18	HA12	2	135	270	2.4
	19	HA12	5	75	375	3.3
	20	HA12	4	94	376	3.3
	21	HA6	3	66	198	0.4
Total+10%:						10.3
PI06	22	HA12	3	100	300	2.7
	23	HA12	3	95	285	2.5
	24	HA12	4	94	376	3.3
	25	HA6	3	66	198	0.4
Total+10%:						9.8
HA6:						4.3
HA10:						2.4
HA12:						74.0
Total:						80.7