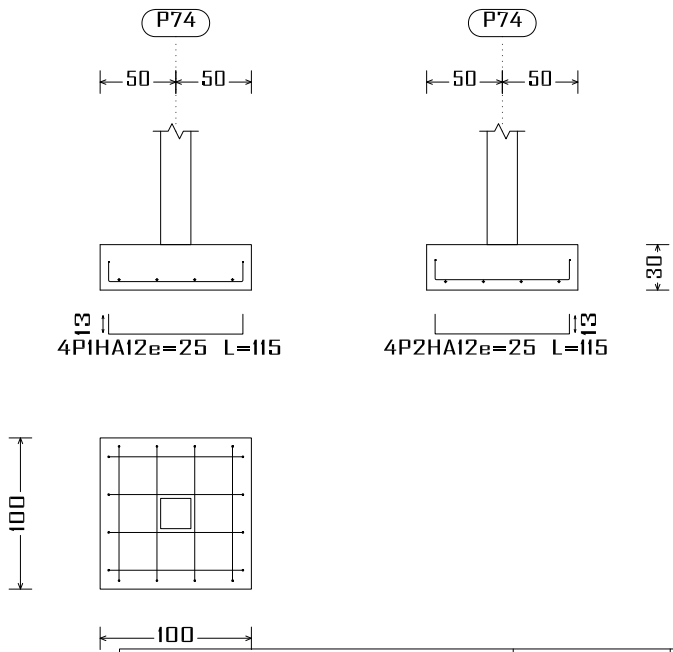
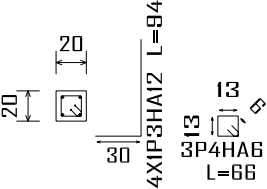


P74



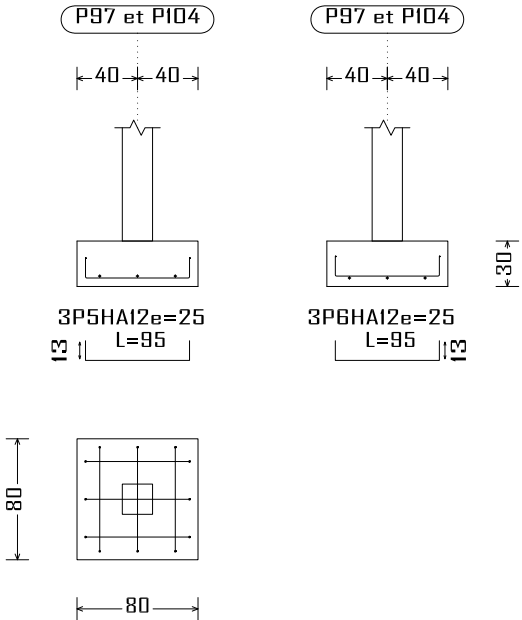
P74



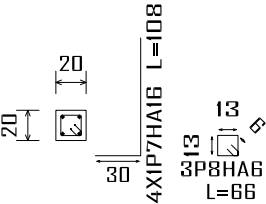
Récapitulatif Acier Fondations		Long. total (m)	Poids+10% (kg)	Total
Fe E400	HA6	396.2	97	
	HA8	201.3	87	
	HA10	28.5	19	
	HA12	2308.9	2255	
	HA16	283.3	492	

Élément	Pos.	Diam.	No.	Long. (cm)	Total (cm)	Fe E400 (kg)
P74	1	HA12	4	115	460	4.1
	2	HA12	4	115	460	4.1
	3	HA12	4	84	376	3.3
	4	HA6	3	66	198	0.4
Total+10%:						13.1
P97=PI04	5	HA12	3	95	285	2.5
	6	HA12	3	85	285	2.5
	7	HA16	4	108	432	6.8
	8	HA6	3	66	198	0.4
Total+10%: (x2):						13.4
						26.8
P99	9	HA12	3	99	297	2.6
	10	HA12	3	95	285	2.5
	11	HA12	4	84	376	3.3
	12	HA6	3	66	198	0.4
Total+10%:						9.7
PI01=PI08=PI09	13	HA12	4	115	460	4.1
	14	HA12	4	90	360	3.2
	15	HA12	4	94	376	3.3
	16	HA6	3	86	258	0.6
Total+10%: (x3):						12.3
						36.9
PI02	17	HA12	4	115	460	4.1
	18	HA12	4	90	360	3.2
	19	HA12	4	94	376	3.3
	20	HA6	3	76	228	0.5
Total+10%:						12.2
LR.T-I.I [P9 - PI0]	21	HA12	2	424	848	7.5
	22	HA12	3	424	1272	11.3
	23	HA16	4	434	1736	27.4
	24	HA8	13	161	2093	8.3
Total+10%:						60.0
						HA6: 4.0
						HA8: 9.2
						HA12: 100.4
						HA16: 45.1
						Total: 158.7

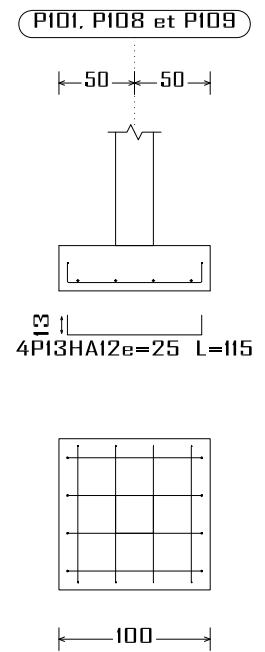
P97 et PI04



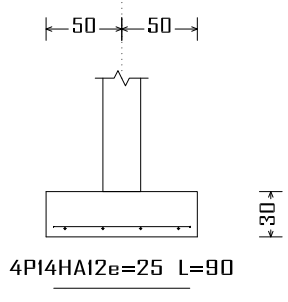
P97 et PI04



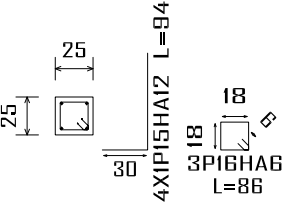
PI01, PI08 et PI09



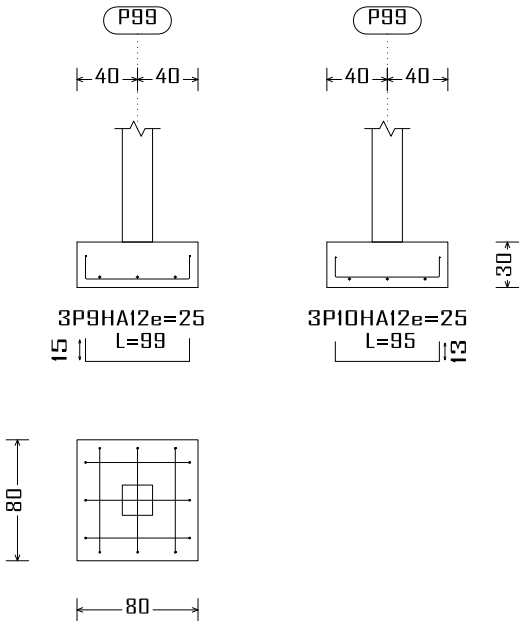
PI01, PI08 et PI09



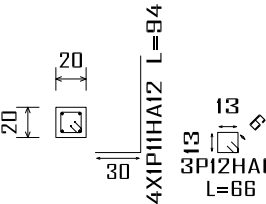
PI01, PI08 et PI09



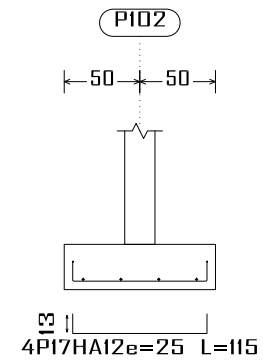
P99



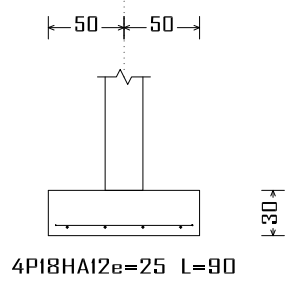
P99



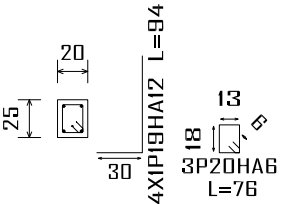
PI02



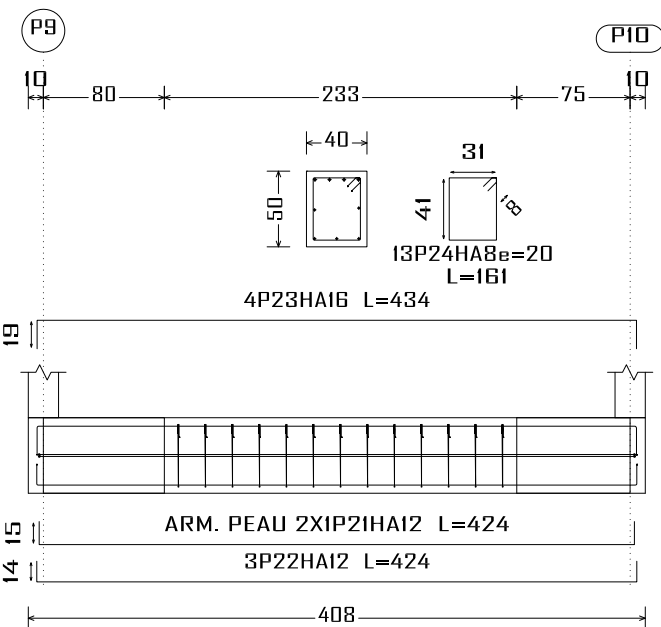
PI02



PI02



LR.T-I.I [P9 - PI0]



Construction, extension, réhabilitation d'infrastructures sanitaires à Boromo et Dédougou			
Maternité de Boromo et Centre Onco-Boromo		Plan de ferrailage des semelles	
Maitre d'ouvrage: ENABEL		A3	
N° plan :		17/07/2025	
Echelle : 1/100		Avant Projet Détaillé	
		Dr.-Ing. Césaire HEMA (IGC N°709)	

