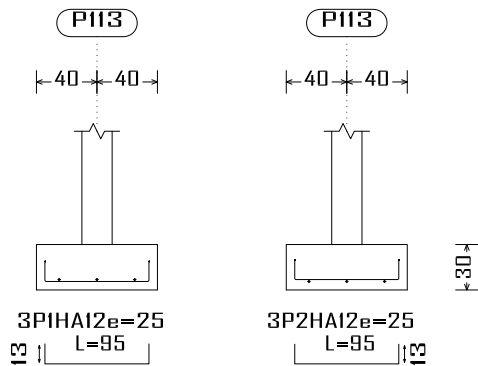
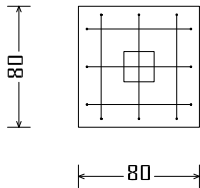
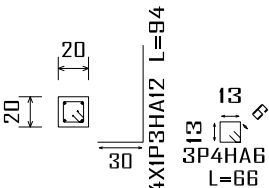


P113

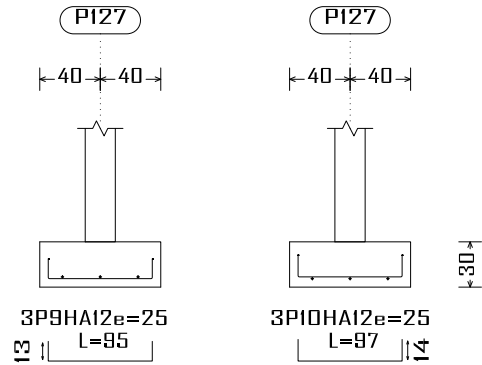


P113

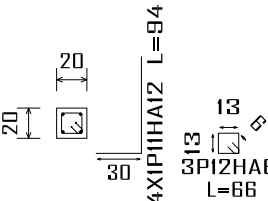


Récapitulatif Acier Fondations		Long. total (m)	Poids+10% (kg)	Total
Fe E400	HA6	396.2	97	
	HA8	201.3	87	
	HA10	28.5	19	
	HA12	2308.9	2255	
	HA16	283.3	492	
Plan de ferrailage fondation				2950

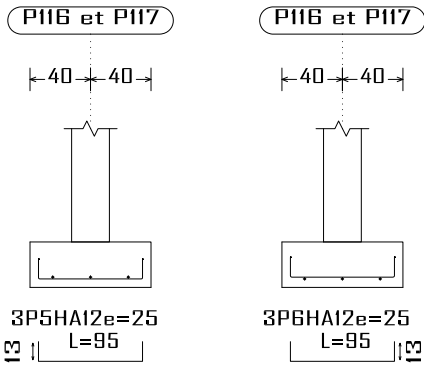
P127



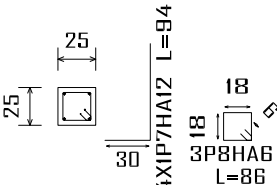
P127



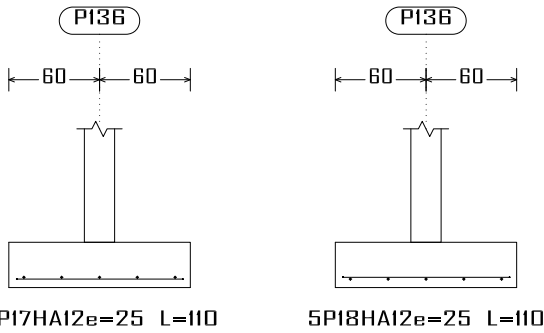
P116 et P117



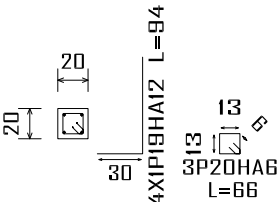
P116 et P117



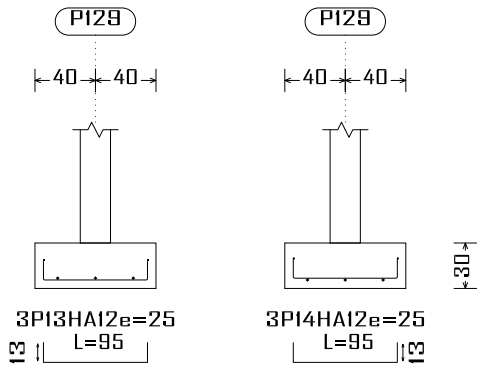
P136



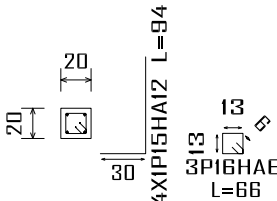
P136



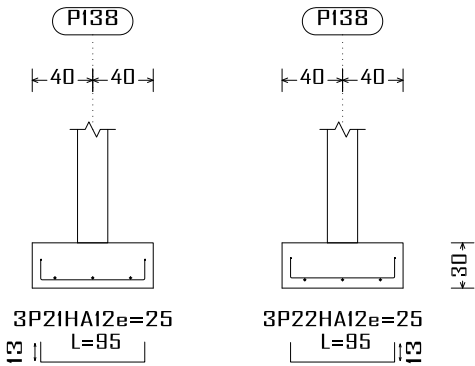
P129



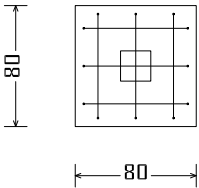
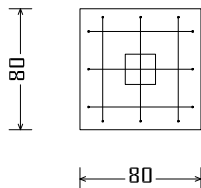
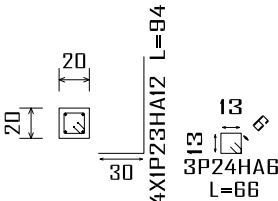
P129



P138



P138



Construction, extension, réhabilitation d'infrastructures sanitaires à Boromo et Dédougou

Maternité de Boromo et Centre Onco-Dép

Maitre d'ouvrage: ENABEL

N° plan :

Echelle : 1/100

Avant Projet Détaillé

Dr.-Ing. Césaire HEMA (IGC N°709)

A3

17/07/2025



Élément	Pos.	Diam.	No.	Long. (cm)	Total (cm)	Fe E400 (kg)
P113	1	HA12	3	95	285	2.5
	2	HA12	3	95	285	2.5
	3	HA12	4	94	376	3.3
	4	HA6	3	66	198	0.4
Total+10%:						8.6
P116=P117	5	HA12	3	95	285	2.5
	6	HA12	3	95	285	2.5
	7	HA12	4	94	376	3.3
	8	HA6	3	86	258	0.6
Total+10%: (x2):						9.8
						19.6
P127	9	HA12	3	95	285	2.5
	10	HA12	3	97	291	2.6
	11	HA12	4	94	376	3.3
	12	HA6	3	66	198	0.4
Total+10%:						9.7
P129	13	HA12	3	95	285	2.5
	14	HA12	3	95	285	2.5
	15	HA12	4	94	376	3.3
	16	HA6	3	66	198	0.4
Total+10%:						9.6
P136	17	HA12	5	110	550	4.8
	18	HA12	5	110	550	4.9
	19	HA12	4	94	376	3.3
	20	HA6	3	66	198	0.4
Total+10%:						14.8
P138	21	HA12	3	95	285	2.5
	22	HA12	3	95	285	2.5
	23	HA12	4	94	376	3.3
	24	HA6	3	66	198	0.4
Total+10%:						9.6
						HA6: 3.9
						HA12: 69.1
						Total: 73.0