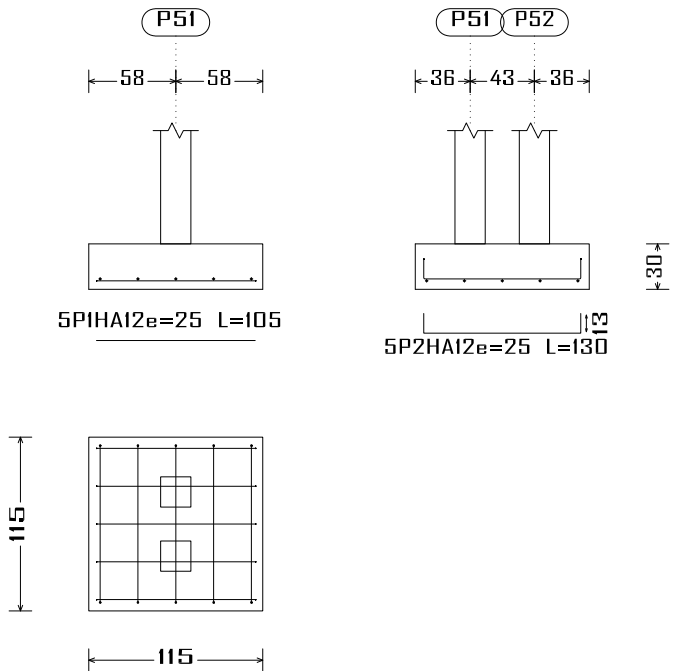


(P51-P52)

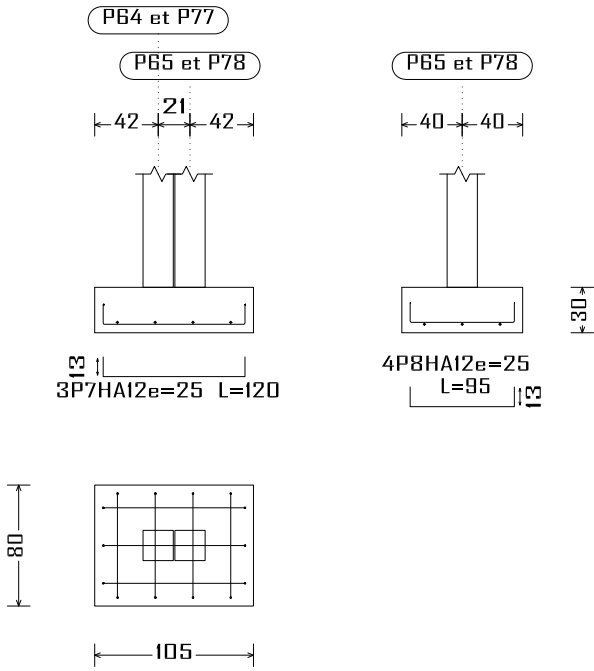


P51

P52

Récapitulatif Acier Fondations		Long. total (m)	Poids+10% (kg)	Total
Plan de ferrailage fondation				
Fe E400	HA6	396.2	97	
	HA8	201.3	87	
	HA10	28.5	19	
	HA12	2308.9	2255	
	HA16	283.3	492	

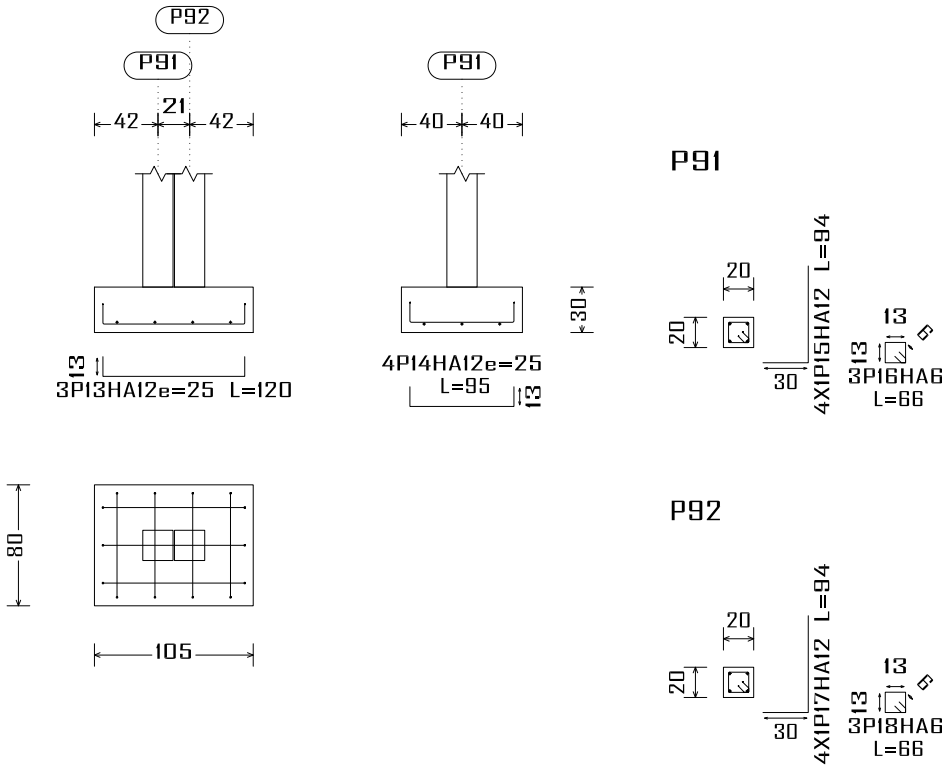
(P65-P64) et (P78-P77)



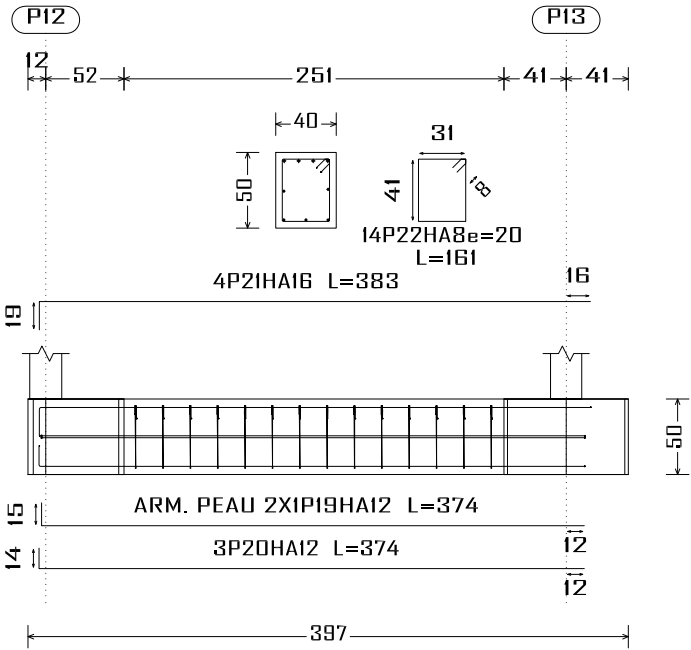
P65 et P78

P64 et P77

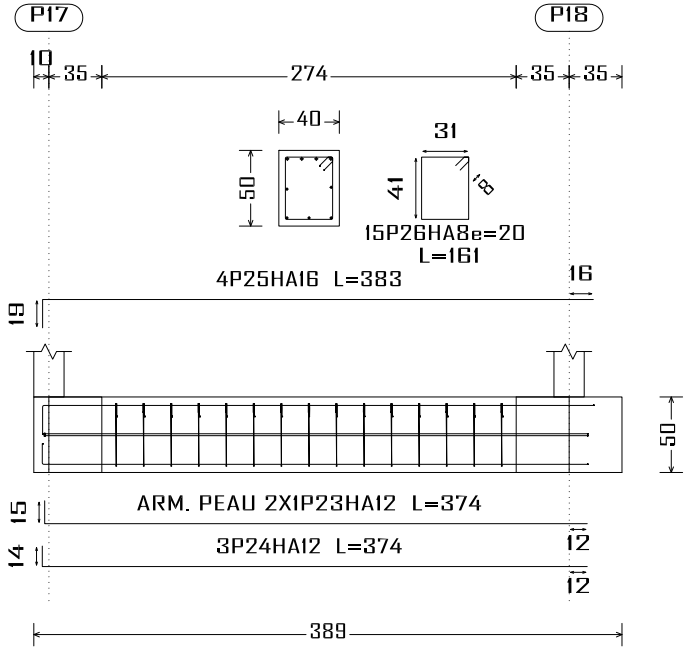
(P91-P92)



LR.T-I.1 [PI2 - PI3]



LR.T-I.1 [PI7 - PI8]



LR.T-I.1 [R2 - R1]

