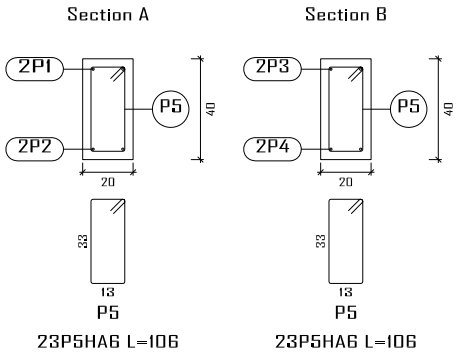
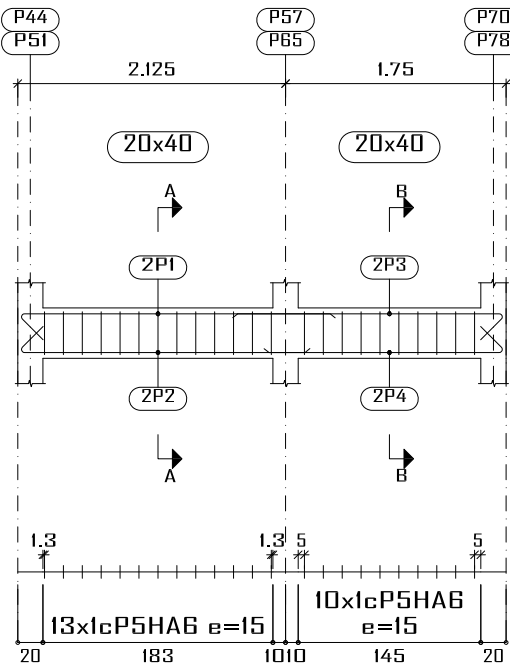


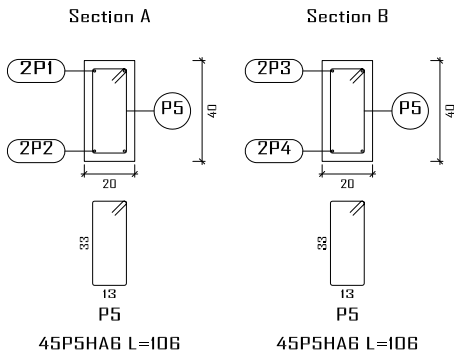
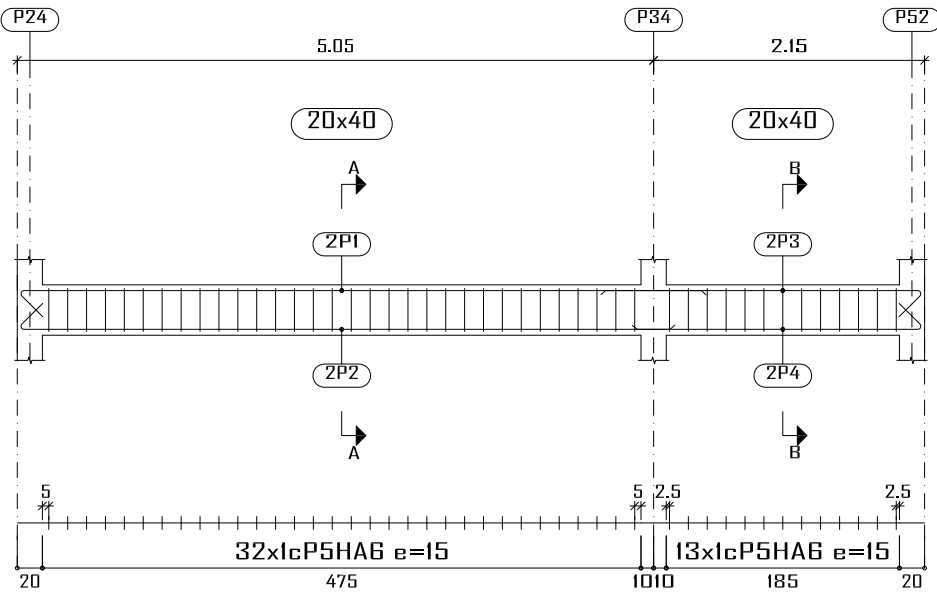
PB-RDC
Plan de ferrailage des poutres
Béton: B25
Acier des barres: Fe E400
Acier des cadres: Fe E400
Échelle portiques 1:60
Échelle sections 1:30
Échelle réservation 1:30

Lg17
Lg37

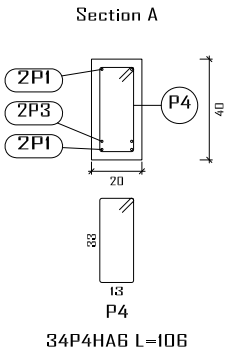
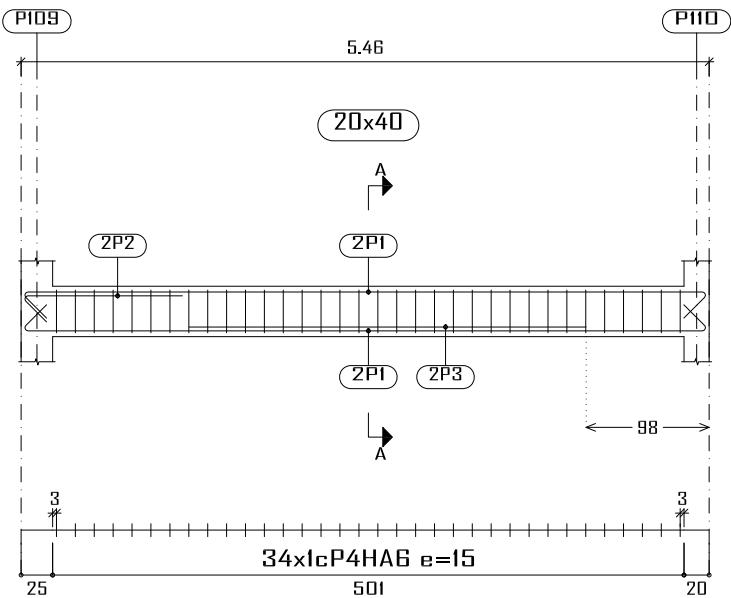


Élément	Pos.	Diam.	No.	Schéma (cm)	Long. (cm)	Total (cm)	Fe E400 (kg)
Lg16	1	HA10	2		565	1130	7.0
	2	HA10	2		540	1080	6.7
	3	HA10	2		275	550	3.4
	4	HA10	2		250	500	3.1
	5	HA6	45		106	4770	10.6
Total+10%:							33.8
Lg17=Lg37	1	HA10	2		270	540	3.3
	2	HA10	2		250	500	3.1
	3	HA10	2		235	470	2.9
	4	HA10	2		210	420	2.6
	5	HA6	23		106	2438	5.4
Total+10%: (x2):							19.0 38.0
Lg21	1	HA10	4		580	2360	14.6
	2	HA10	2		150	300	1.8
	3	HA10	2		315	630	3.9
	4	HA6	34		106	3604	8.0
Total+10%:							31.1
Lg22	1	HA10	4		588	2352	14.5
	2	HA10	4		150	600	3.7
	3	HA10	2		325	650	4.0
	4	HA6	34		106	3604	8.0
Total+10%:							33.2
							HA6: 41.1 HA10: 95.1 Total: 136.2

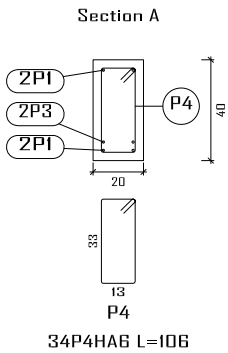
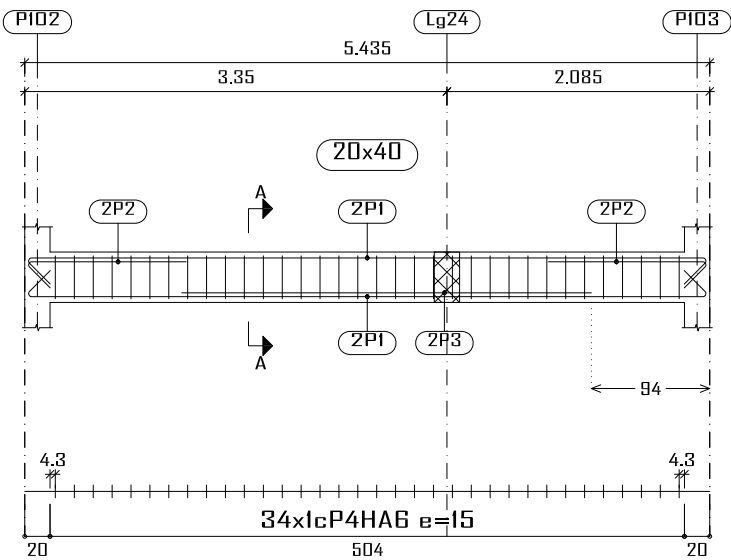
Lg16



Lg21



Lg22



Construction, extension, réhabilitation d'infrastructures sanitaires à Boromo et Dédougou

Maternité de Boromo et Centre Onco-Burkina Faso

Maitre d'ouvrage: ENABEL

N° plan :

Echelle : 1/100

Avant Projet Détaillé

Dr.-Ing. Césaire HEMA (IGC N°709)

A3

17/07/2025

