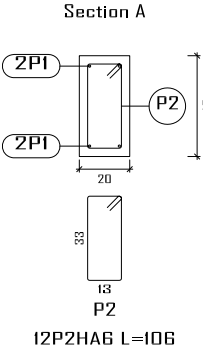
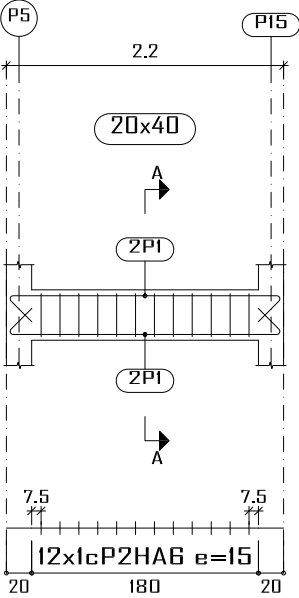
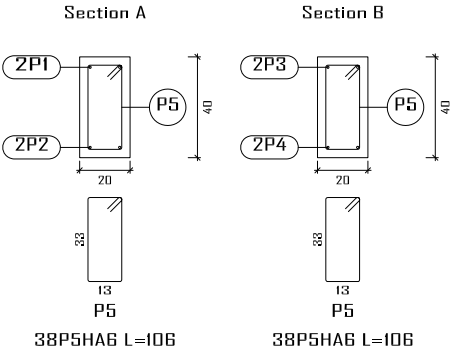
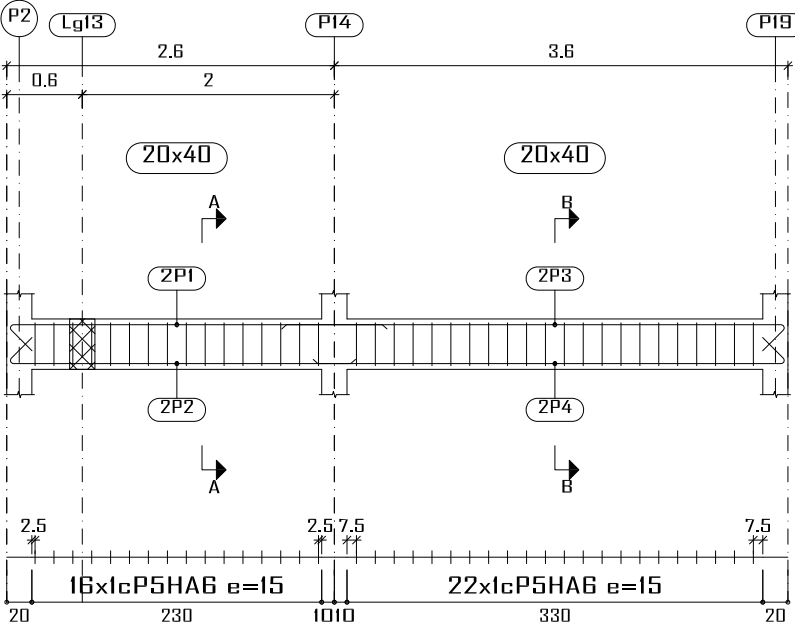


Lg12



Élément	Pos.	Diam.	No.	Schéma (cm)	Long. (cm)	Total (cm)	Fe E400 (kg)
Lg10	1	HA10	2		320	640	3.9
	2	HA10	2		295	590	3.6
	3	HA10	2		420	840	5.2
	4	HA10	2		395	790	4.9
	5	HA6	38		106	4028	8.9
Total+10%:							28.2
Lg11	1	HA10	2		435	870	5.4
	2	HA10	2		410	820	5.1
	3	HA10	2		645	1290	8.0
	4	HA10	2		620	1240	7.6
	5	HA10	2		205	410	2.5
	6	HA6	62		106	6572	14.6
Total+10%:							47.5
Lg12	1	HA10	4		264	1056	6.5
	2	HA6	12		106	1272	2.8
Total+10%:							10.2
							HA6: 28.8
							HA10: 58.1
							Total: 86.9

Lg10



Lg11

