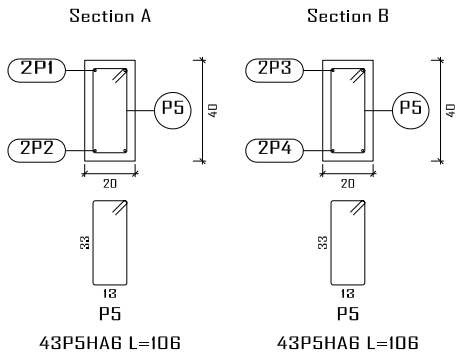
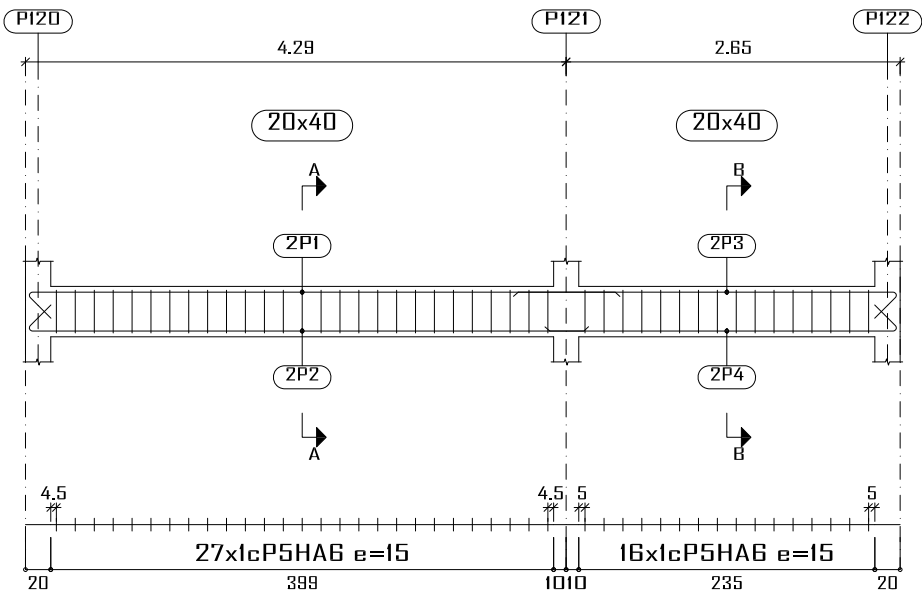


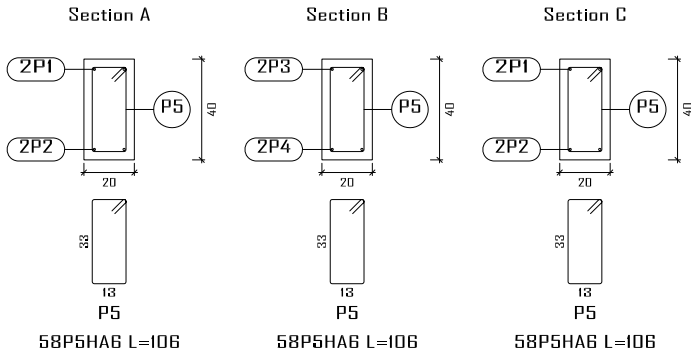
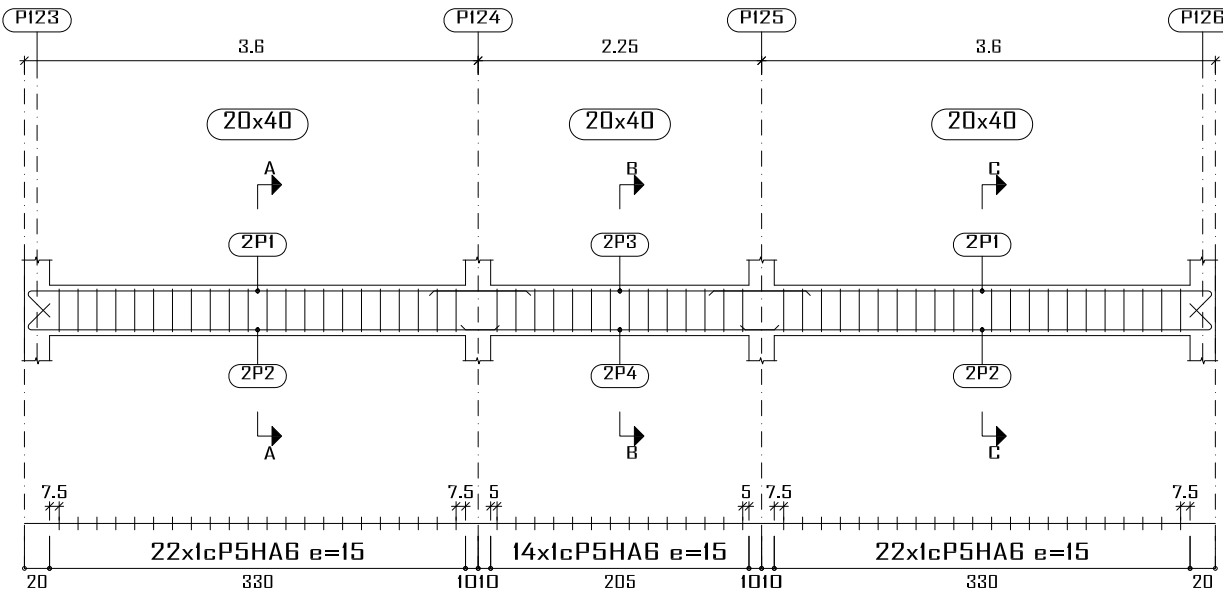
PB-RDC  
Plan de ferrailage des poutres  
Béton: B25  
Acier des barres: Fe E400  
Acier des cadres: Fe E400  
Échelle portiques 1:60  
Échelle sections 1:30  
Échelle réservation 1:30

Élément	Pos.	Diam.	No.	Schéma (cm)	Long. (cm)	Total (cm)	Fe E400 (kg)
Lg41	1	HA10	2		490	980	6.0
	2	HA10	2		465	930	5.7
	3	HA10	2		325	650	4.0
	4	HA10	2		300	600	3.7
	5	HAB	43		106	4558	10.1
	Total+10%:						32.5
Lg42	1	HA10	4		420	1680	10.4
	2	HA10	4		395	1580	9.7
	3	HA10	2		295	590	3.6
	4	HA10	2		245	490	3.0
	5	HAB	58		106	6148	13.6
	Total+10%:						44.3
Lg64	1	HA10	4		1068	4272	26.3
	2	HAB	66		106	6996	15.5
	Total+10%:						46.0
						HAB: 43.2 HA10: 79.6 Total: 122.8	

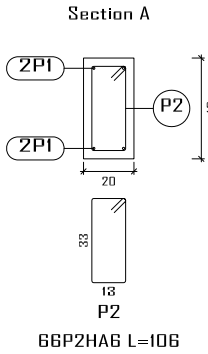
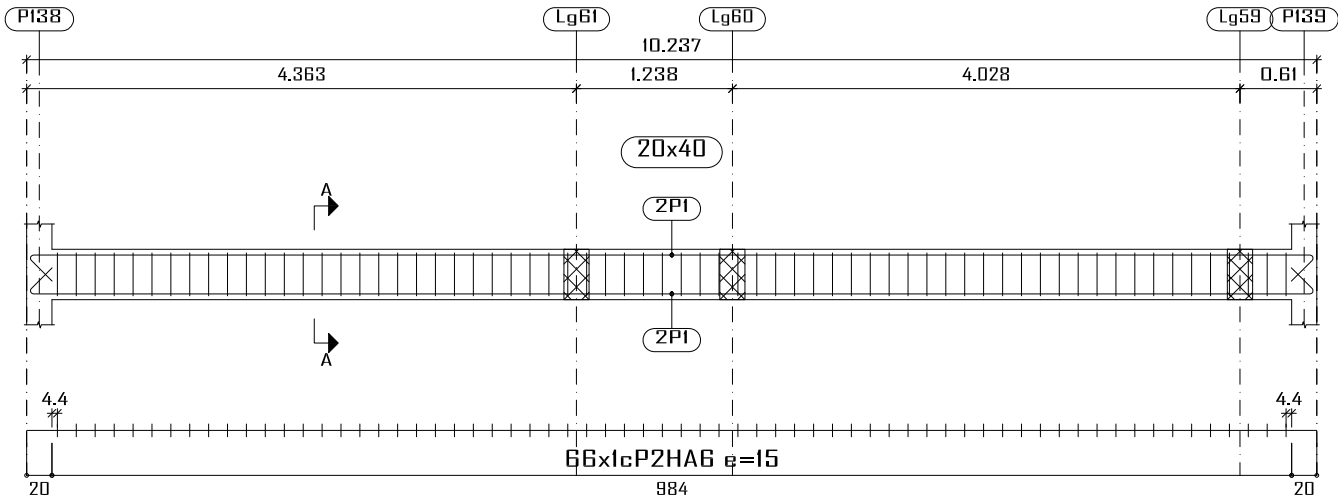
Lg41



Lg42



Lg64



Construction, extension, réhabilitation d'infrastructures sanitaires à Boromo et Dédougou

Maternité de Boromo et Centre Onco-Burkina

Maitre d'ouvrage: ENABEL

N° plan :

Echelle : 1/100

Avant Projet Détaillé

Dr.-Ing. Césaire HEMA (IGC N°709)

A3

17/07/2025

