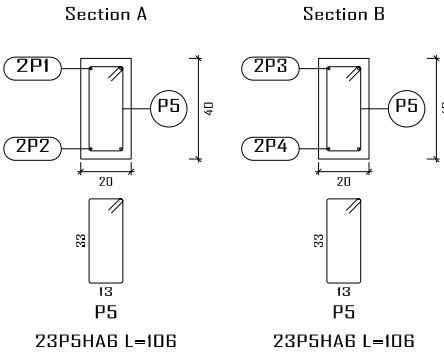
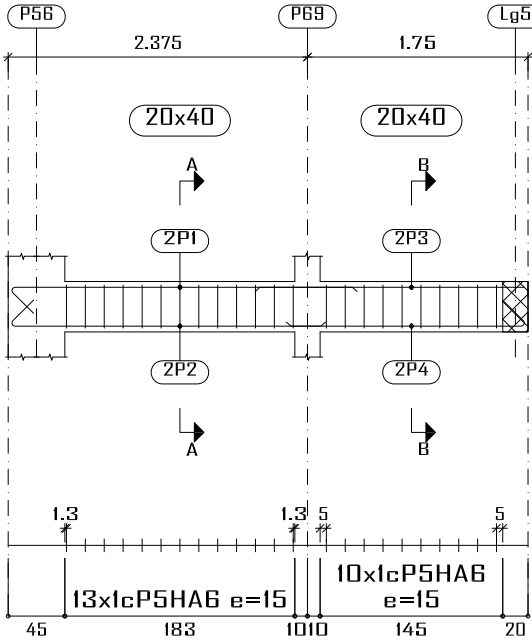
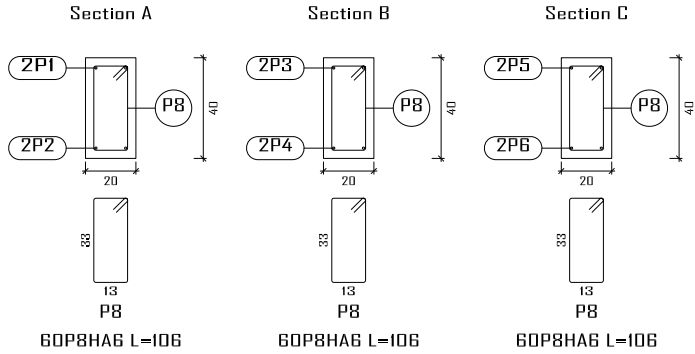
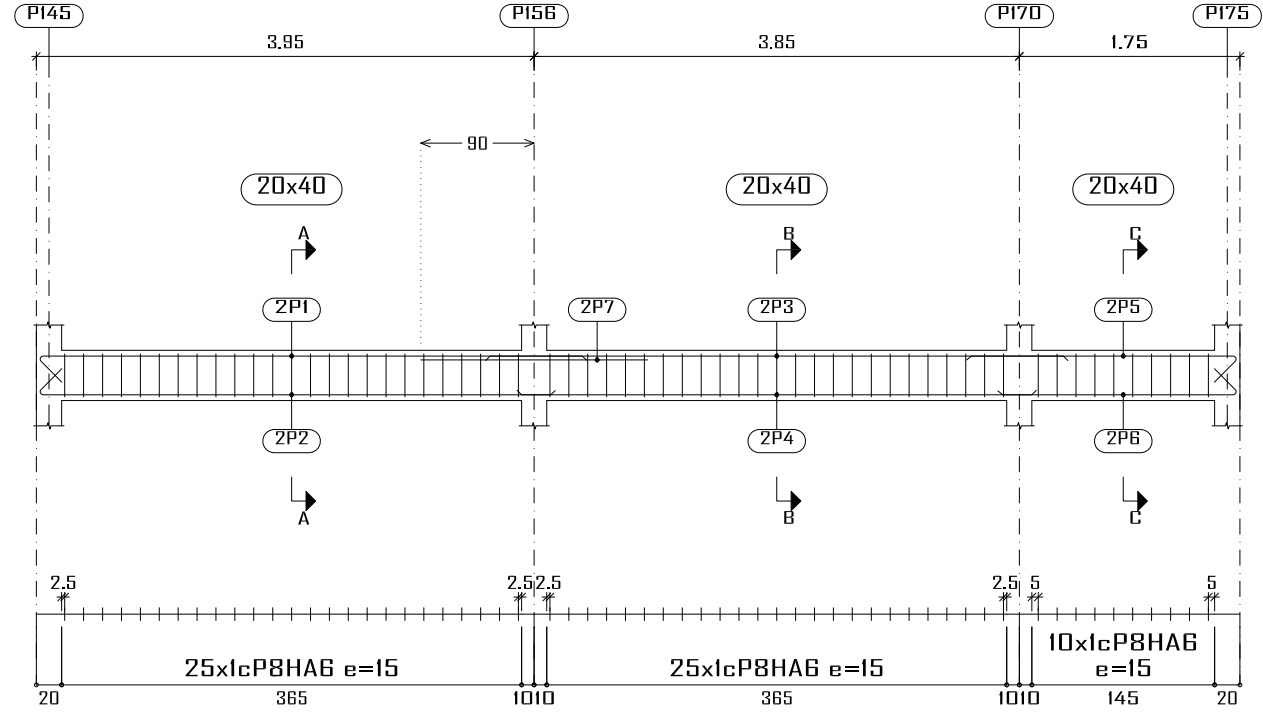


PB-RDC  
Plan de ferrailage des poutres  
Béton: B25  
Acier des barres: Fe E400  
Acier des cadres: Fe E400  
Échelle portiques 1:60  
Échelle sections 1:30  
Échelle réservation 1:30

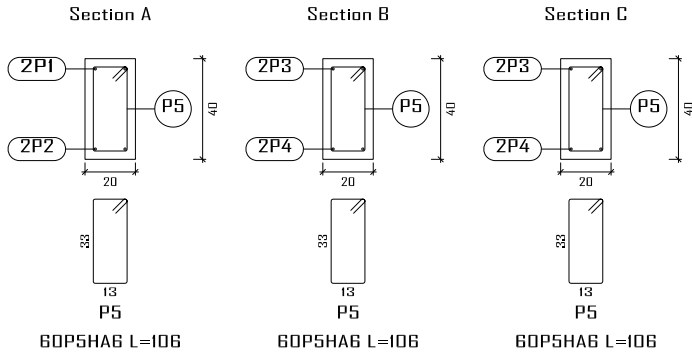
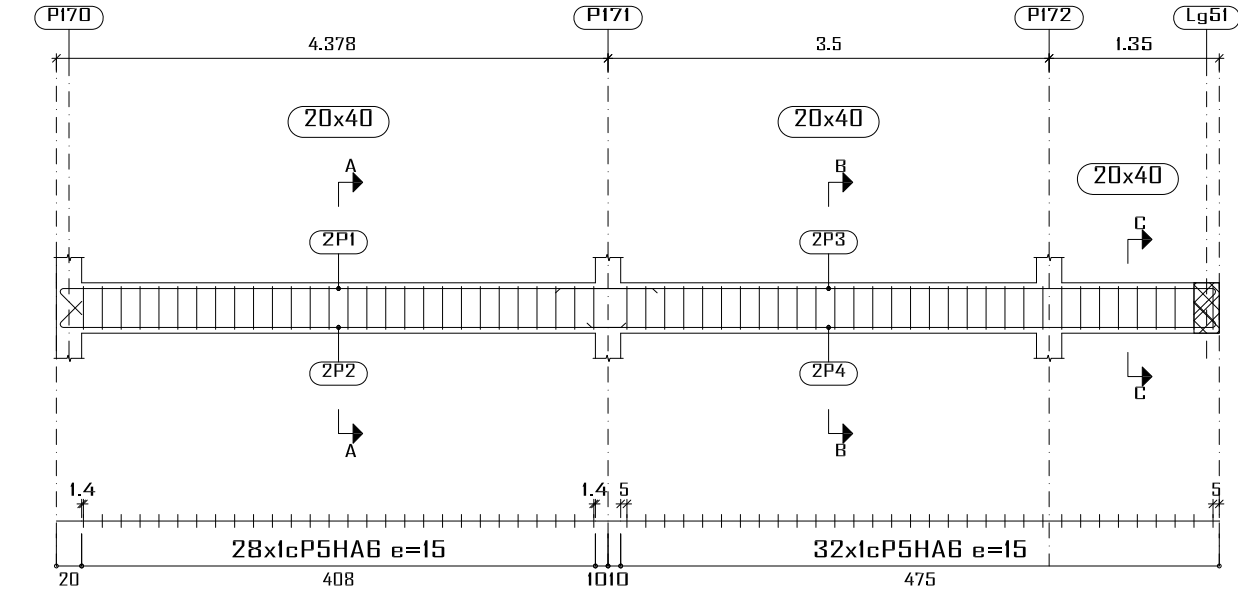
Lg80



Lg48



Lg50



Élément	Pos.	Diam.	No.	Schéma (cm)	Long. (cm)	Total (cm)	Fe E400 (kg)
Lg48	1	HA10	2		455	910	5.6
	2	HA10	2		430	860	5.3
	3	HA10	2		455	910	5.6
	4	HA10	2		405	810	5.0
	5	HA10	2		235	470	2.9
	6	HA10	2		210	420	2.6
	7	HA10	2		180	360	2.2
	8	HA6	60		106	6360	14.1
Total+10%:							47.6
Lg50	1	HA10	2		495	990	6.1
	2	HA10	2		470	940	5.8
	3	HA10	2		545	1090	6.7
	4	HA10	2		520	1040	6.4
	5	HA6	60		106	6360	14.1
Total+10%:							43.0
Lg80	1	HA10	2		295	590	3.6
	2	HA10	2		270	540	3.3
	3	HA10	2		210	420	2.6
	4	HA10	2		210	420	2.6
	5	HA6	23		106	2438	5.4
Total+10%:							19.3
HA6:							37.0
HA10:							72.9
Total:							109.9

Construction, extension, réhabilitation d'infrastructures sanitaires à Boromo et Dédougou

Maternité de Boromo et Centre Onco-Burkina Faso

Maitre d'ouvrage: ENABEL

N° plan :

Echelle : 1/100

Avant Projet Détaillé

Dr.-Ing. Césaire HEMA (IGC N°709)

A3

17/07/2025

