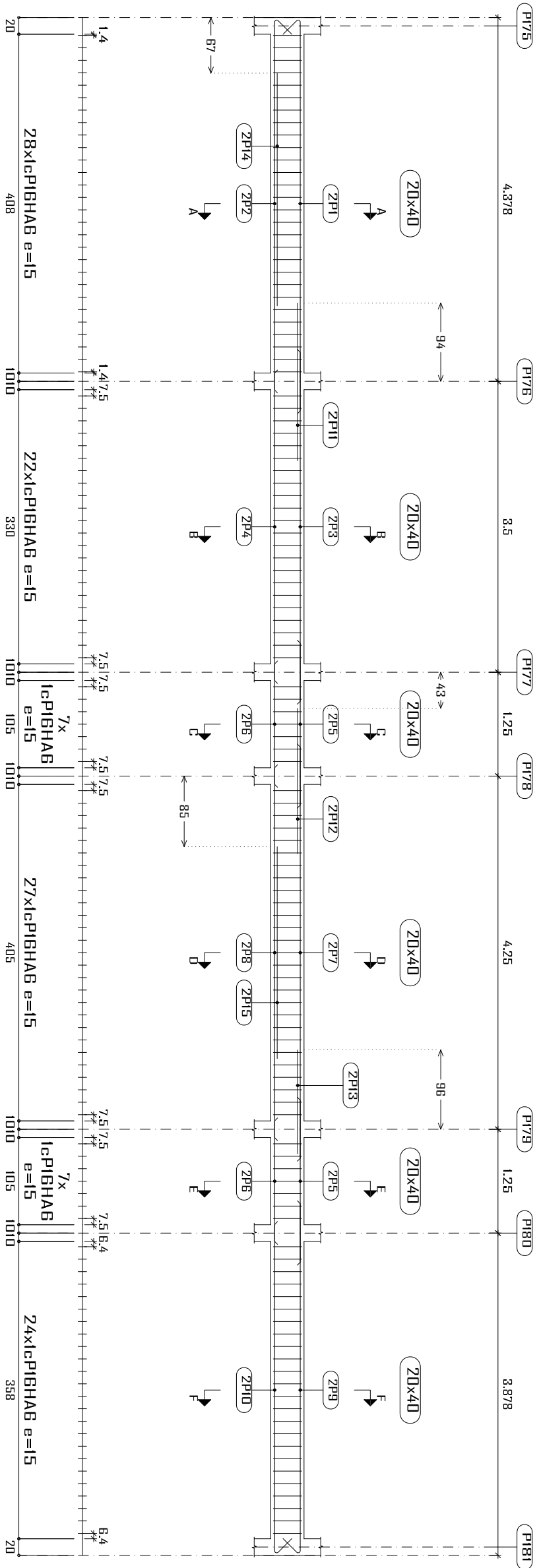

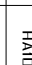
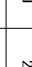
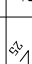



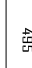

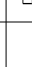
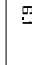





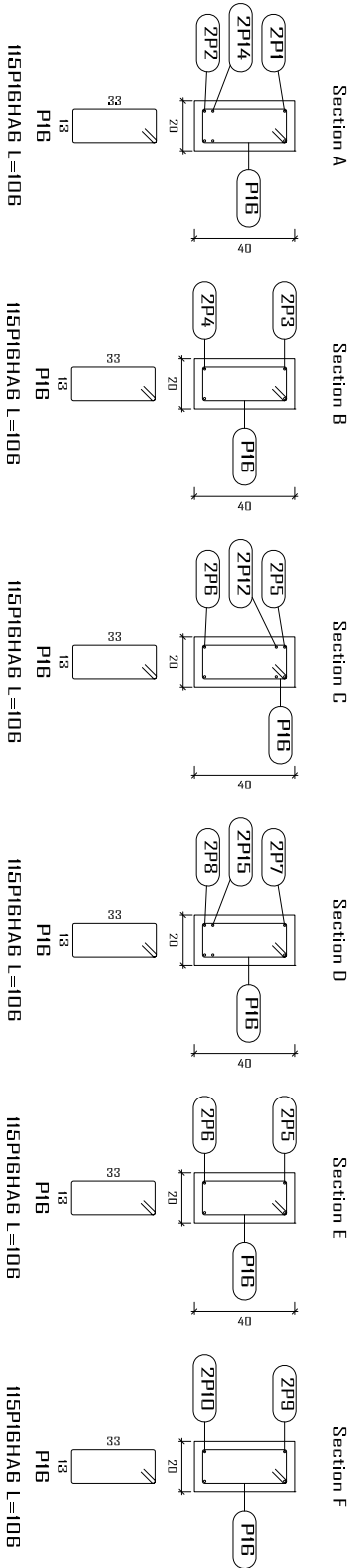


Lg49



Élément	Pos.	Diam.	No.	Schéma (cm)	Long. (cm)	Total Fe E400 (kg)	
Lg48	1	HA10	2		495	980	6.1
	2	HA10	2		470	940	5.8
	3	HA10	2		420	840	5.2
	4	HA10	2		370	740	4.6
	5	HA10	4		195	780	4.8
	6	HA10	4		145	580	3.6
	7	HA10	2		485	980	6.1
	8	HA10	2		445	880	5.5
	9	HA10	2		445	880	5.5
	10	HA10	2		420	840	5.2
	11	HA10	2		190	380	2.3
	12	HA10	2		175	350	2.2
	13	HA10	2		125	250	1.5
	14	HA10	2		280	560	3.5
	15	HA10	2		255	510	3.1
	16	HA6	115		106	12180	27.1
Total+10%:					101.3		
HA6: 29.8 HA10: 71.5 Total: 101.3							



Construction, extension, réhabilitation d'infrastructures sanitaires à Boromo et Dédougou

Maternité de Boromo et Centre Onf

A3

Maitre d'ouvrage: ENABEL

Avant Projet Détaillé

17/07/2025

N° plan : Echelle : 1/100

Dr.-Ing. Césaire HEMA (IGC N°709)

