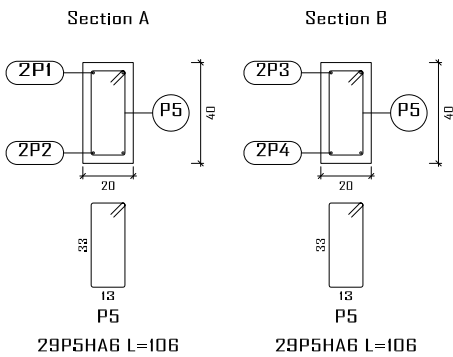
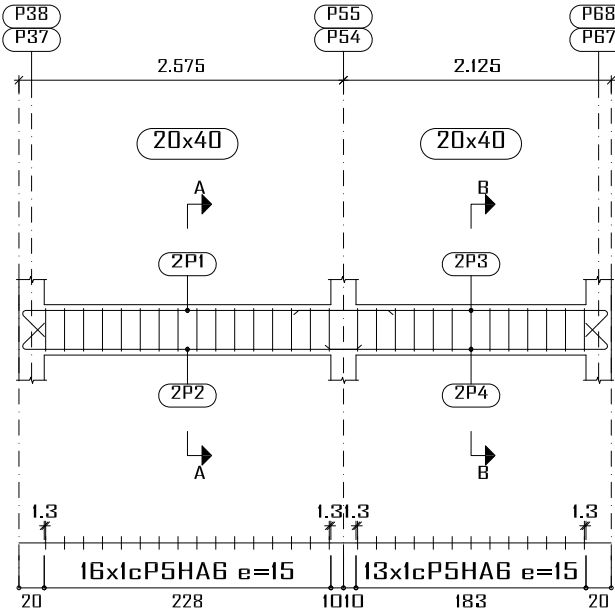
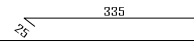
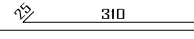
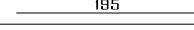
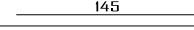
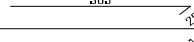
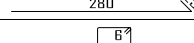
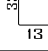
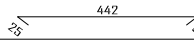
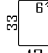
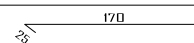
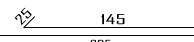
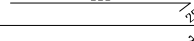
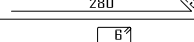
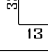
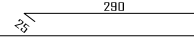
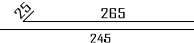
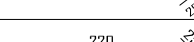

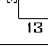
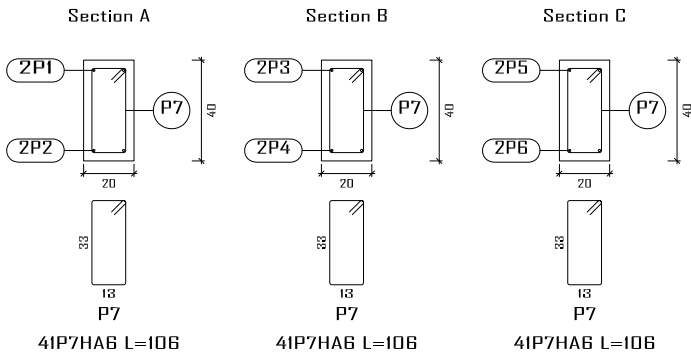
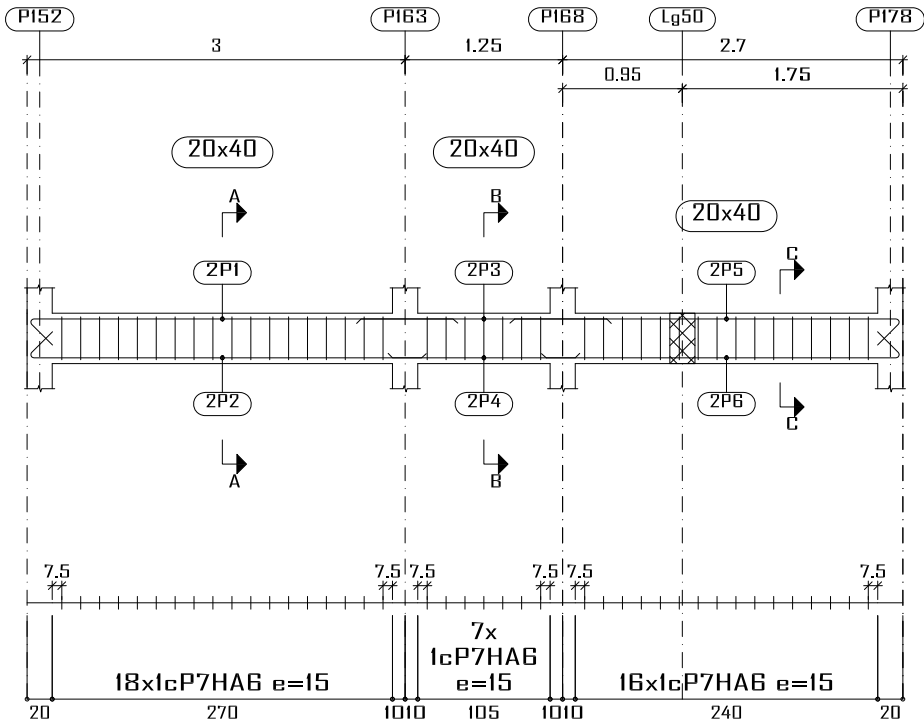


Lg78
Lg79



Élément	Pos.	Diam.	No.	Schéma (cm)	Long. (cm)	Total (cm)	Fe E400 (kg)
Lg51	1	HA10	2		360	720	4.4
	2	HA10	2		335	670	4.1
	3	HA10	2		195	390	2.4
	4	HA10	2		145	290	1.8
	5	HA10	2		330	660	4.1
	6	HA10	2		305	610	3.8
	7	HA6	41		106	4346	8.6
	Total+10%:						33.2
Lg52	1	HA10	4		482	1968	12.1
	2	HA6	28		106	2968	6.6
	Total+10%:						20.6
Lg53	1	HA10	2		195	390	2.4
	2	HA10	2		170	340	2.1
	3	HA10	2		330	660	4.1
	4	HA10	2		305	610	3.8
	5	HA6	23		106	2438	5.4
	Total+10%:						19.6
Lg78=Lg79	1	HA10	2		315	630	3.9
	2	HA10	2		290	580	3.6
	3	HA10	2		270	540	3.3
	4	HA10	2		245	490	3.0
	5	HA6	29		106	3074	6.8
	Total+10%: (x2):						22.7 46.4
HA6: HA10: Total:						38.8 80.0 118.8	

Lg51



Lg53

Lg52

