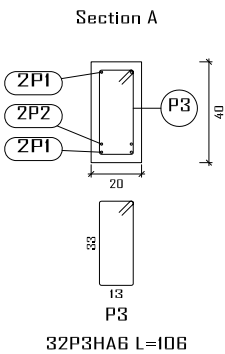
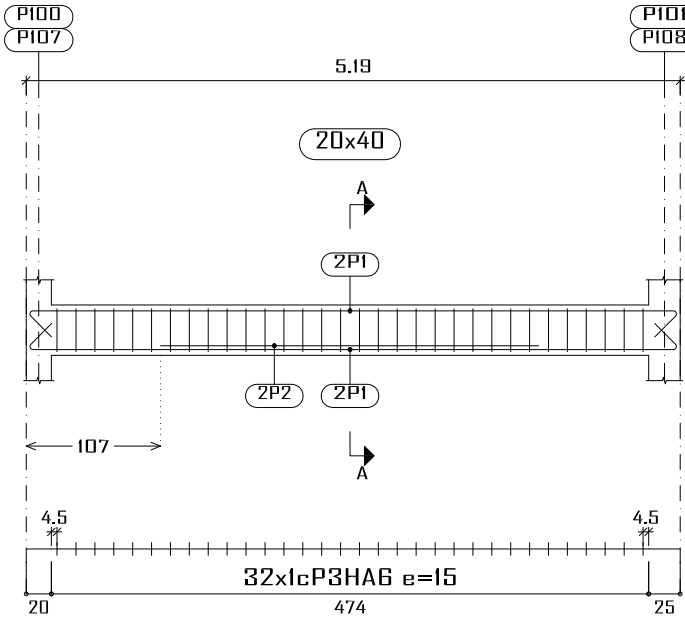
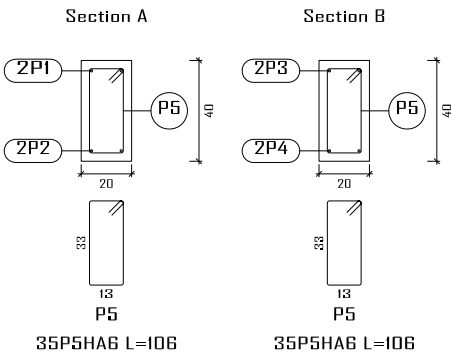
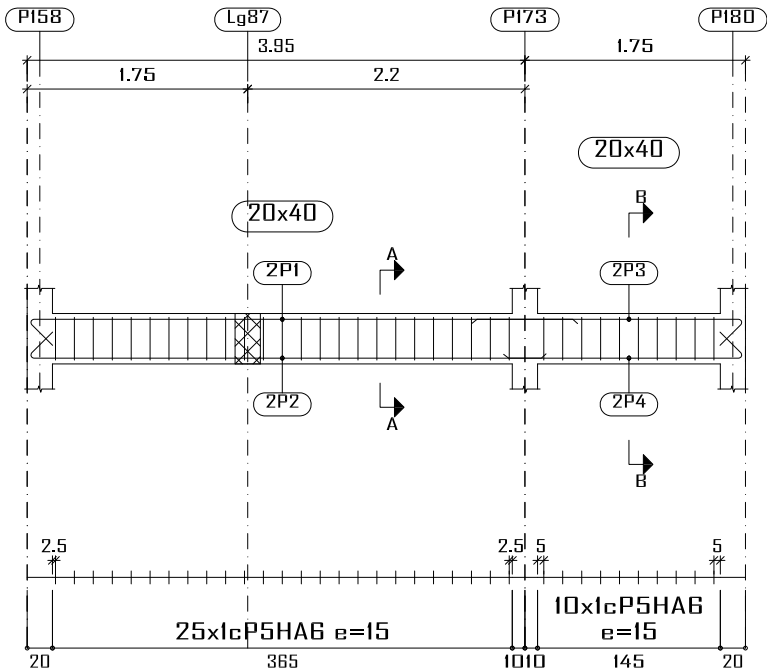


PB-RDC  
Plan de ferrailage des poutres  
Béton: B25  
Acier des barres: Fe E400  
Acier des cadres: Fe E400  
Échelle portiques 1:60  
Échelle sections 1:30  
Échelle réservation 1:30

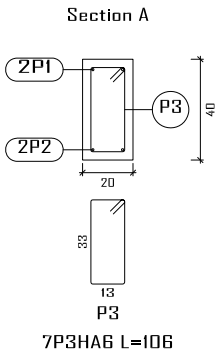
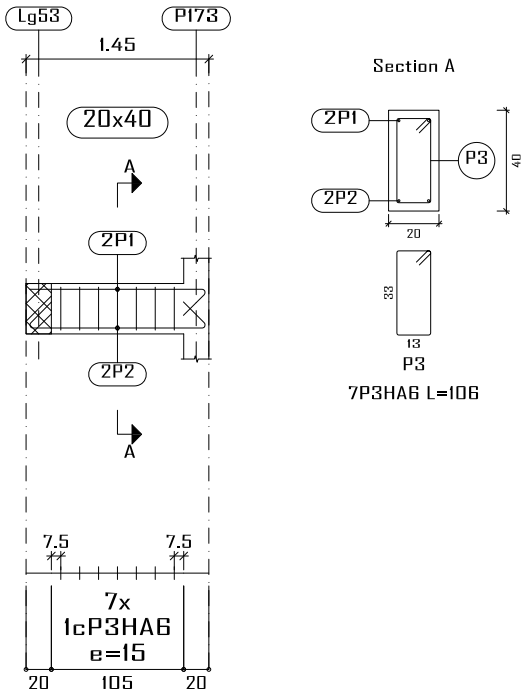
Lg66  
Lg68



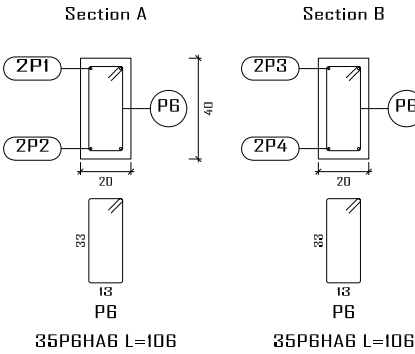
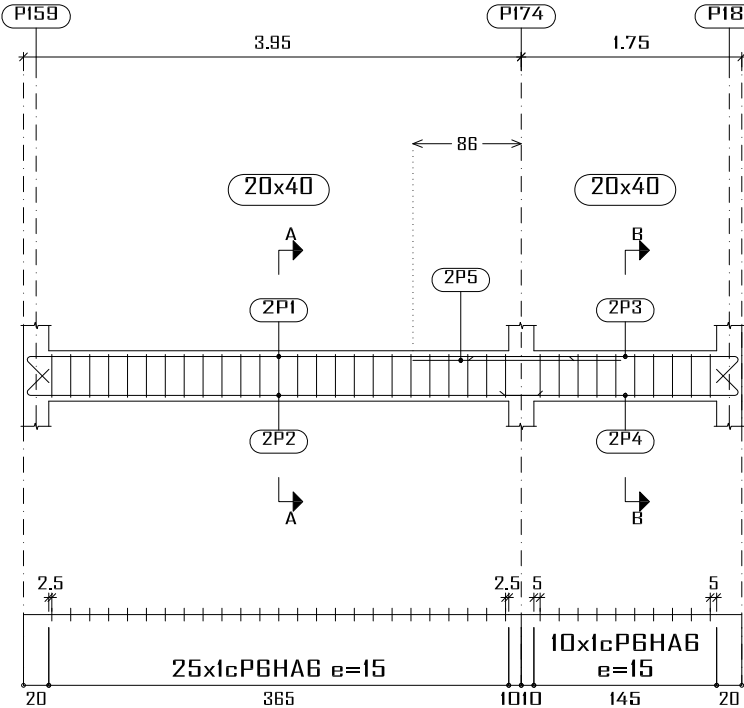
Lg54



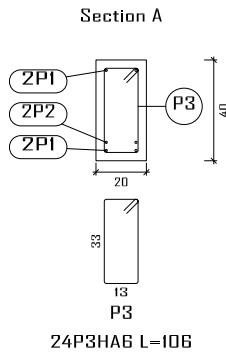
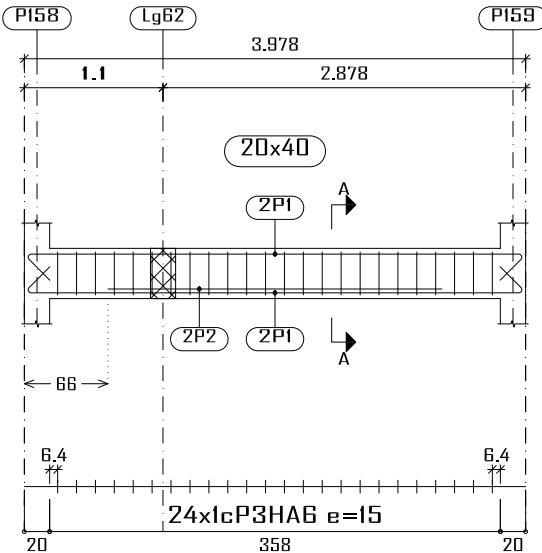
Lg55



Lg56



Lg57



Élément	Pos.	Diam.	No.	Schéma (cm)	Long. (cm)	Total (cm)	Fe E400 (kg)
Lg54	1	HA10	2		455	910	5.6
	2	HA10	2		430	860	5.3
	3	HA10	2		235	470	2.9
	4	HA10	2		210	420	2.6
	5	HA6	35		106	3710	8.2
Total+10%:							27.1
Lg55	1	HA10	2		164	328	2.0
	2	HA10	2		189	378	2.3
	3	HA6	7		106	742	1.6
Total+10%:							6.5
Lg56	1	HA10	2		455	910	5.6
	2	HA10	2		430	860	5.3
	3	HA10	2		235	470	2.9
	4	HA10	2		210	420	2.6
	5	HA10	2		165	330	2.0
	6	HA6	35		106	3710	8.2
Total+10%:							29.3
Lg57	1	HA10	4		442	1768	10.9
	2	HA10	2		265	530	3.3
	3	HA6	24		106	2544	5.6
Total+10%:							21.8
Lg66=Lg68	1	HA10	4		563	2252	13.9
	2	HA10	2		300	600	3.7
	3	HA6	32		106	3392	7.5
	Total+10%:						27.6
						(x2):	55.2
						HA6:	42.6
						HA10:	97.3
						Total:	139.9

Construction, extension, réhabilitation d'infrastructures sanitaires à Boromo et Dédougou

Maternité de Boromo et Centre Onco-Dép

Maitre d'ouvrage: ENABEL

N° plan :

Echelle : 1/100

Avant Projet Détaillé

Dr.-Ing. Césaire HEMA (IGC N°709)

A3

17/07/2025

