

## PB-RDC

## Plan de ferrailage des poutres

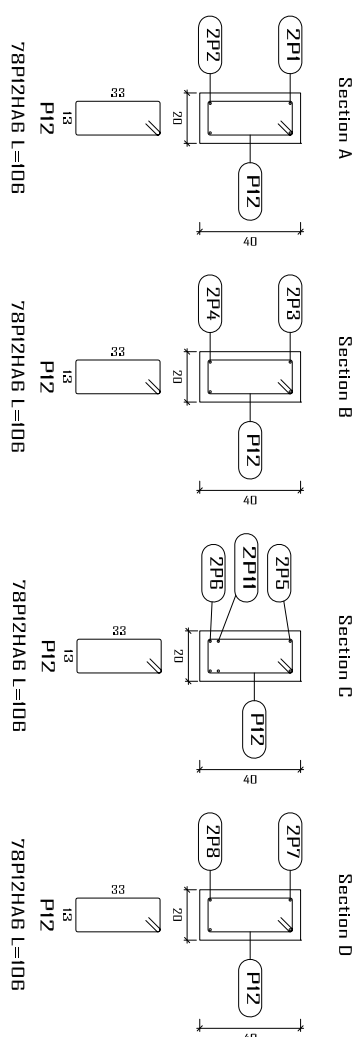
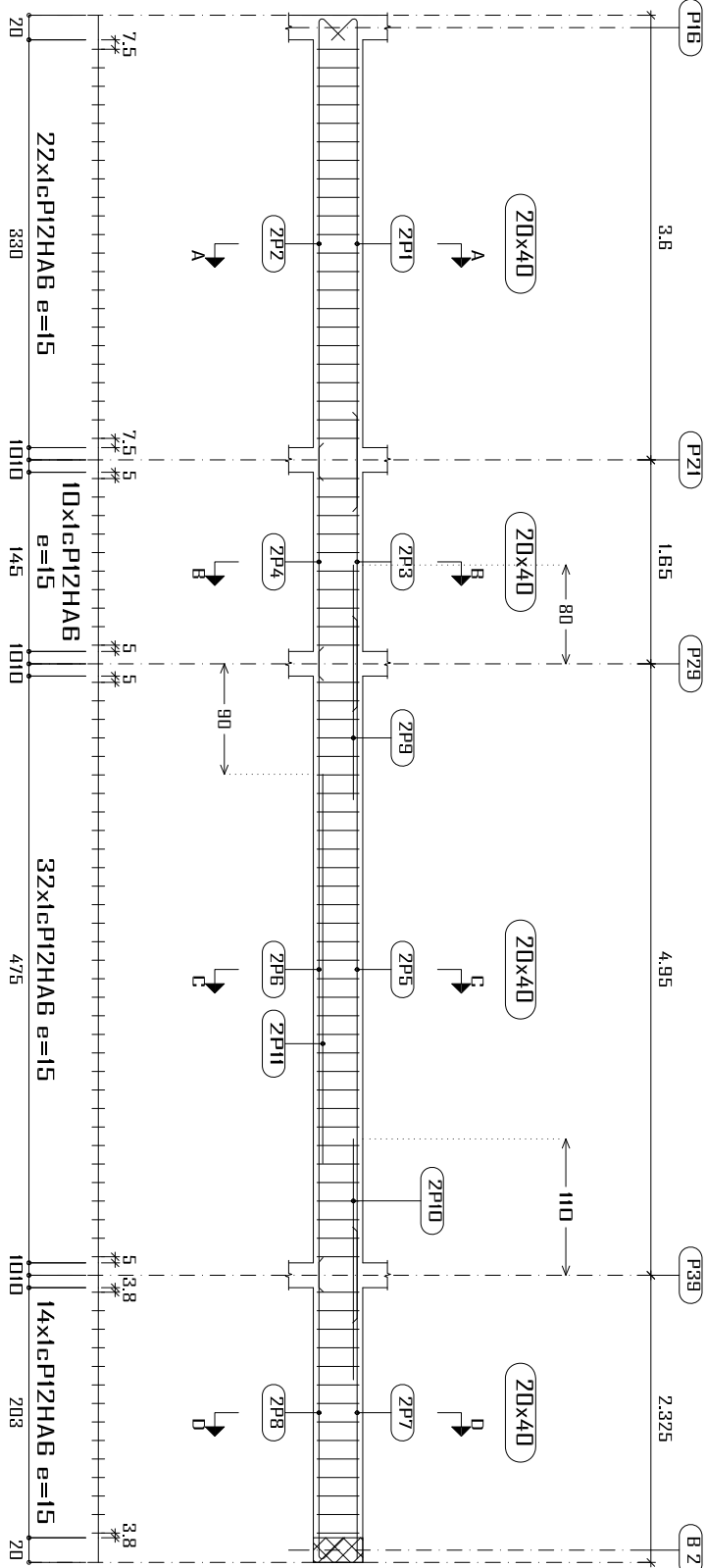
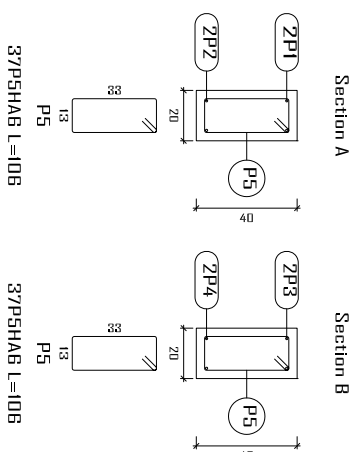
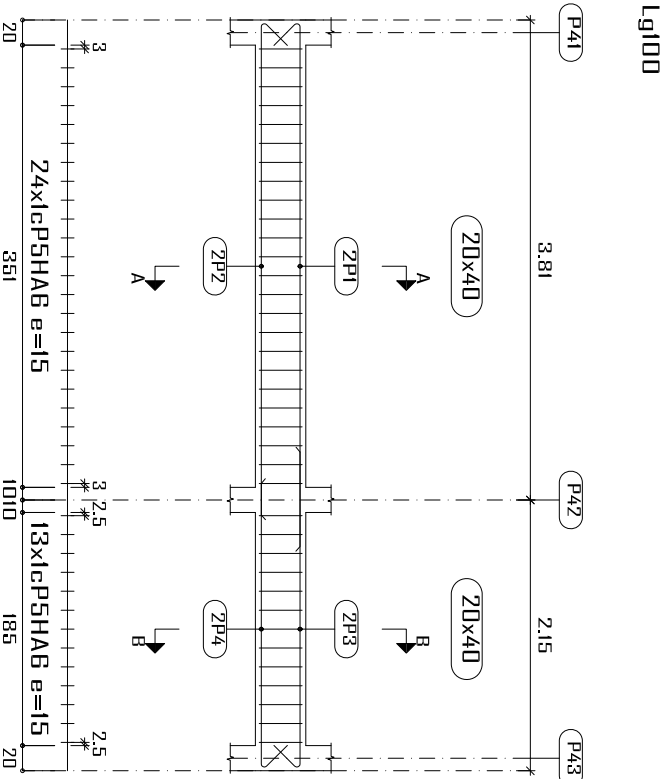
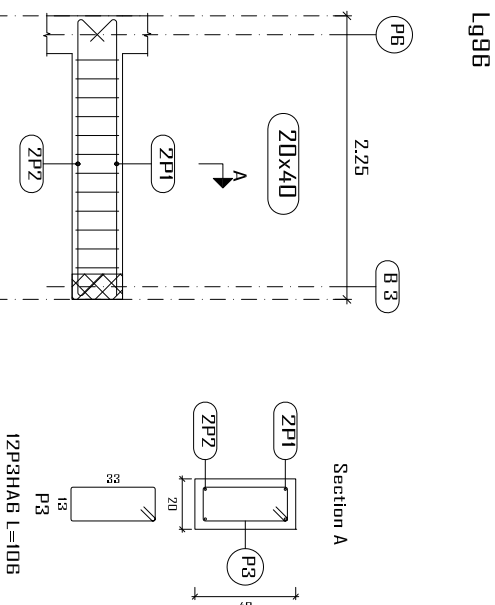
**Béton: B25**

Acier des barres: Fe E400

Échelle portiques 1:60

Échelle sections 1:30

Échelle réservation 1:30



Élément		Pos.	Diam. No.	Schéma (cm)	Long. (cm)	Total Fe E400 (cm) (kg)			
LgB3		1	HA10	2		840	5.2		
		2	HA10	2		385	4.9		
		3	HA10	2		470	2.9		
		4	HA10	2		185	2.3		
		5	HA10	2		565	7.0		
		6	HA10	2		515	6.4		
		7	HA10	2		265	3.3		
		8	HA10	2		265	3.3		
		9	HA10	2		190	2.3		
		10	HA10	2		195	2.4		
LgB6		11	HA10	2		315	3.9		
		12	HA6	78		106	18.3		
	Total+10%: 68.4								
		1	HA10	2		244	488	3.0	
		2	HA10	2		269	538	3.3	
		3	HA6	12		106	1272	2.8	
	Total+10%: 10.0								
	Lg100		1	HA10	2		440	880	5.4
			2	HA10	2		415	830	5.1
			3	HA10	2		275	550	3.4
		4	HA10	2		250	500	3.1	
		5	HA6	37		106	3822	8.7	
Total+10%: 28.3									
HA6: 32.8									
HA10: 73.9									
Total: 108.7									

Construction, extension, réhabilitation d'infrastructures sanitaires à Boromo et Dédougou

Maternité de Boromo et Centre Ondes de ferrailage des longrines

A3

Maitre d'ouvrage ENABEL

## Avant Projet Détaillé

17/07/2025

N° plan : Echelle : 1/100

Dr.-Ing. Césaire HEMA (IGC N°709)

