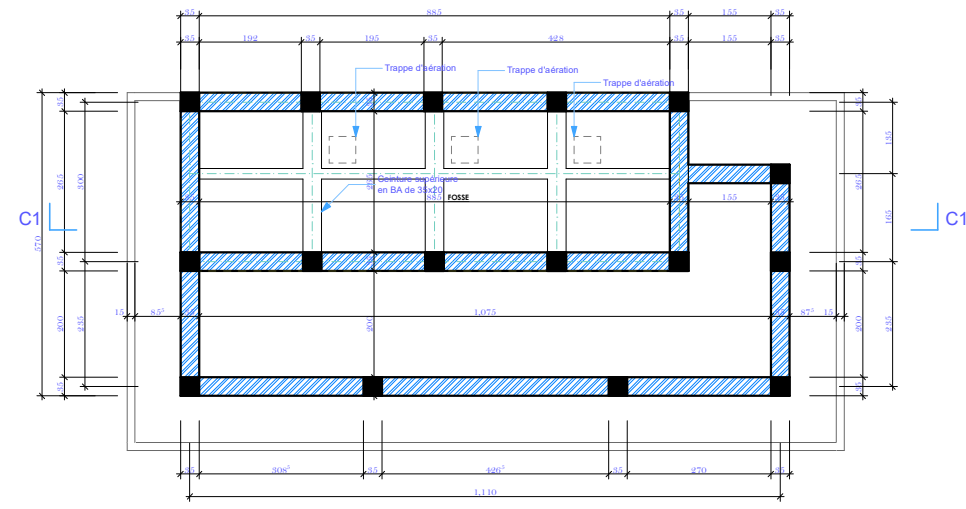
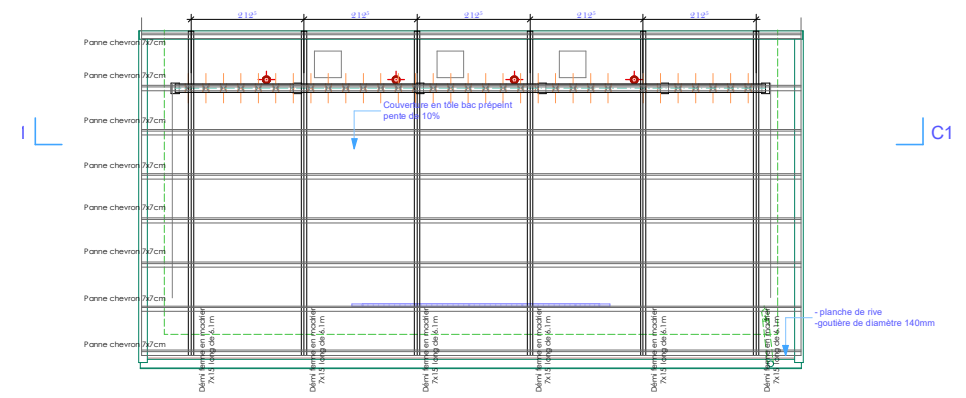


# TRAVAUX DE CONSTRUCTION DE 5 ECOLES PRIMAIRES A GEMENA DANS LA PROVINCE DU SUDUBANGI

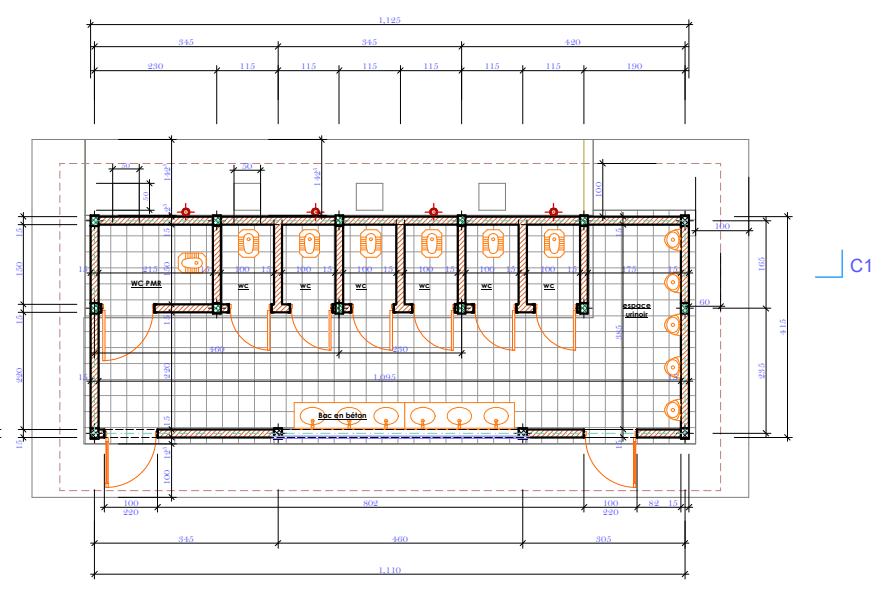
## PAN TYPE L1 latrine GARCON



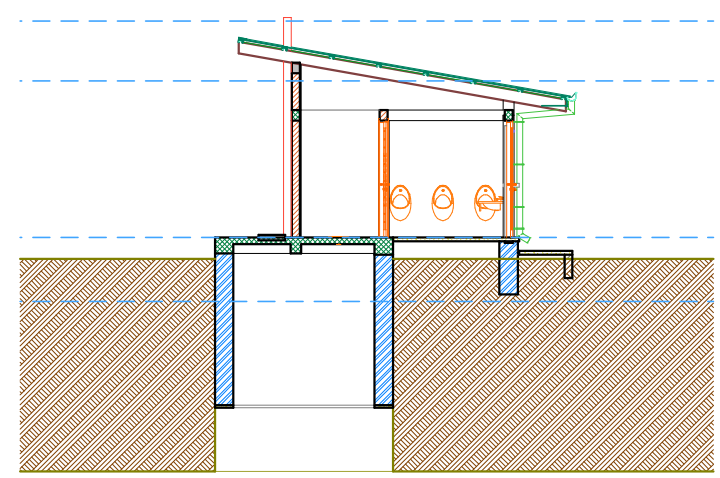
**Plan de fondation**



**Plan de Toiture**



**Vue en plan cotée**

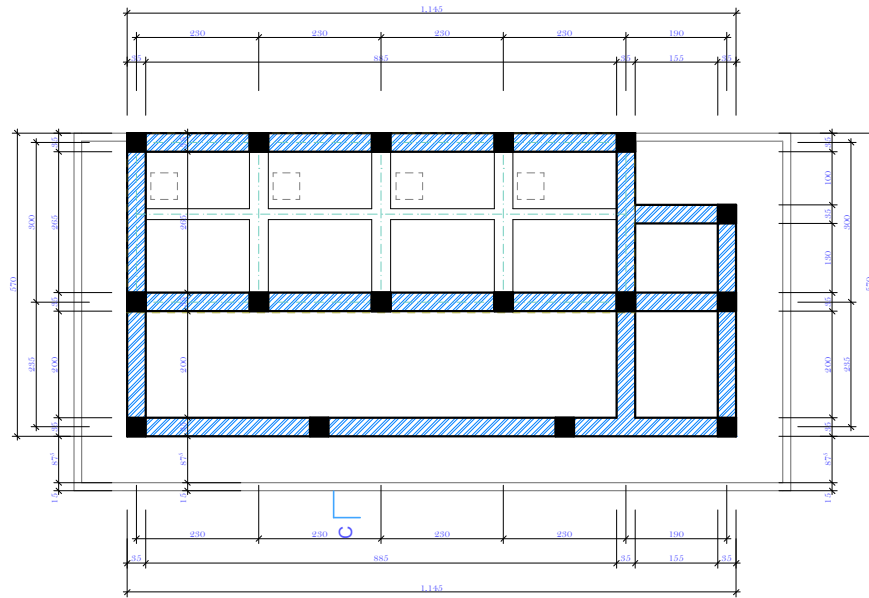


**Coupe transversale**

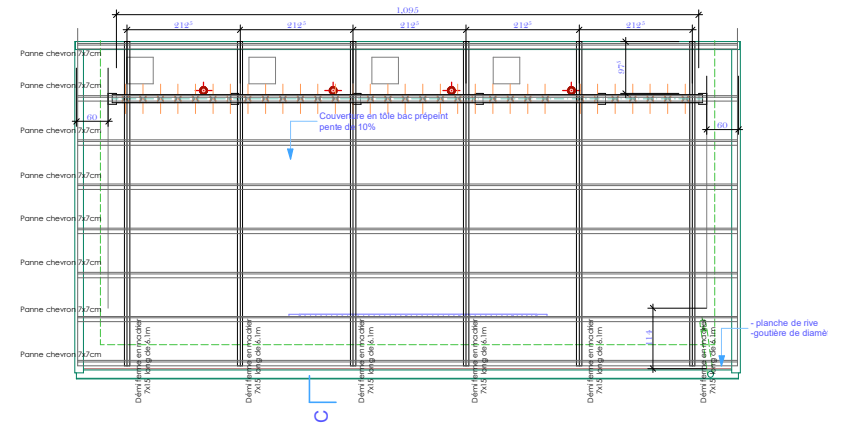
# TRAVAUX DE CONSTRUCTION DE 5 ECOLES PRIMAIRES A GEMENA DANS LA PROVINCE DU SUDUBANGI

## PAN TYPE L2

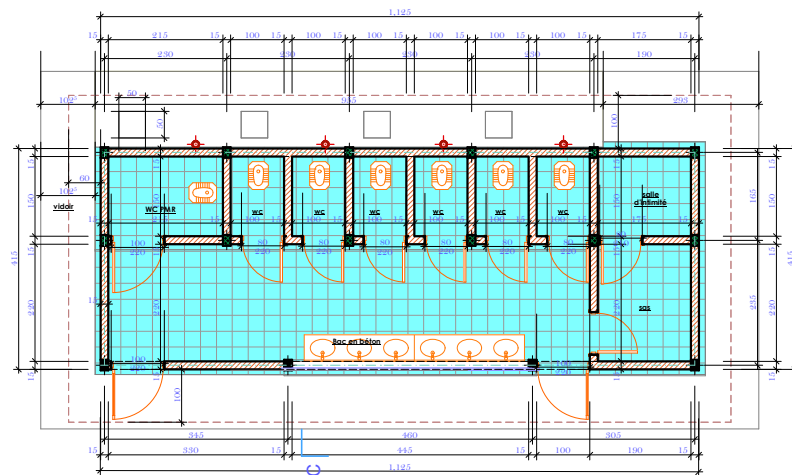
latrine Filles



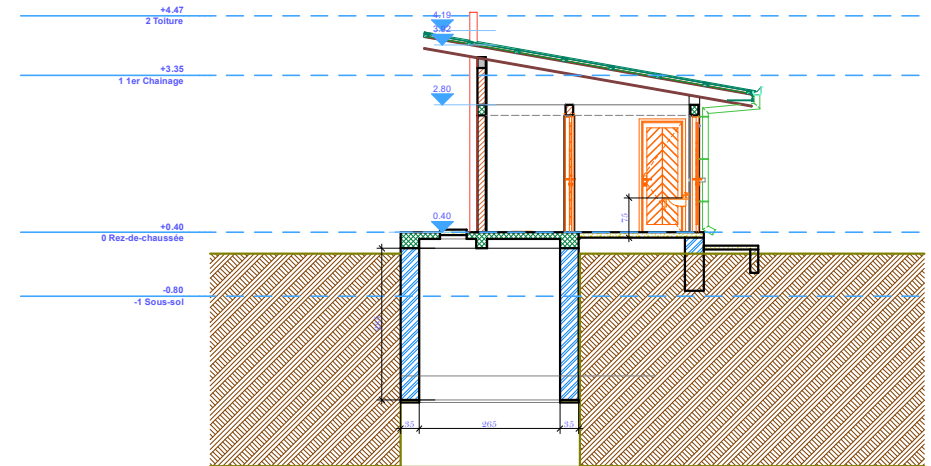
**Plan de fondation**



**Plan de Toiture**



**Vue en plan cotée**



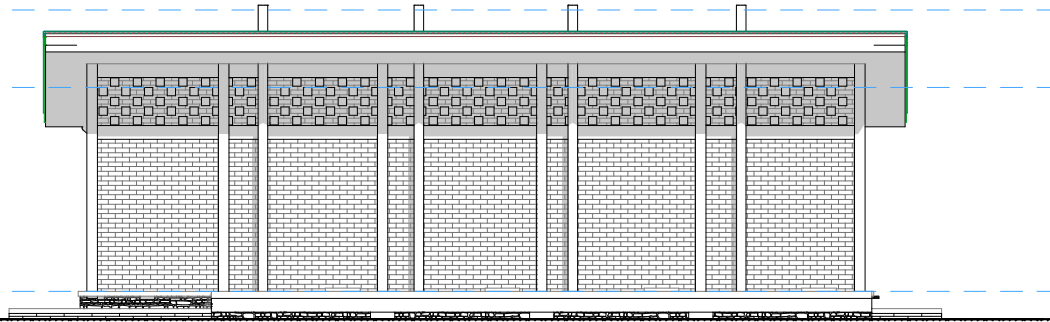
**Coupe transversale**

# TRAVAUX DE CONSTRUCTION DE 5 ECOLES PRIMAIRES A GEMENA DANS LA PROVINCE DU SUDUBANGI

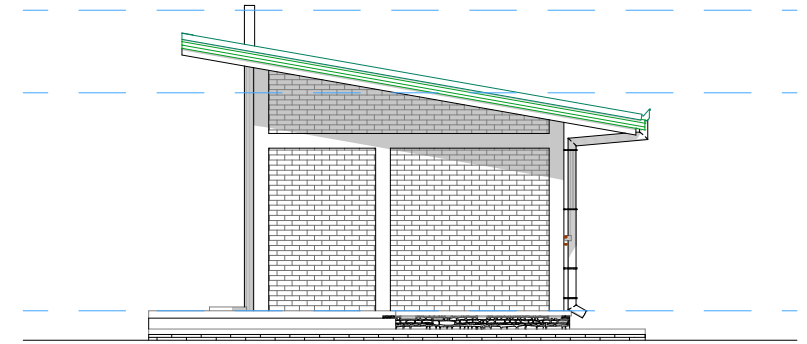
## PLAN TYPE L1

Latrine garçon

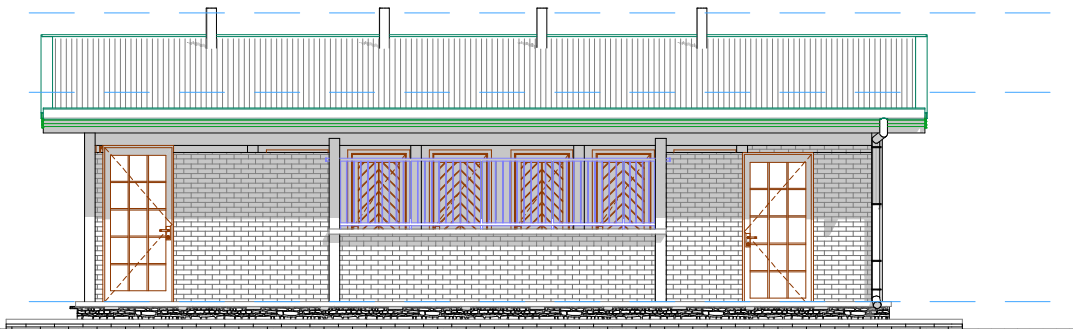
### PLANS SANITAIRES TYPE



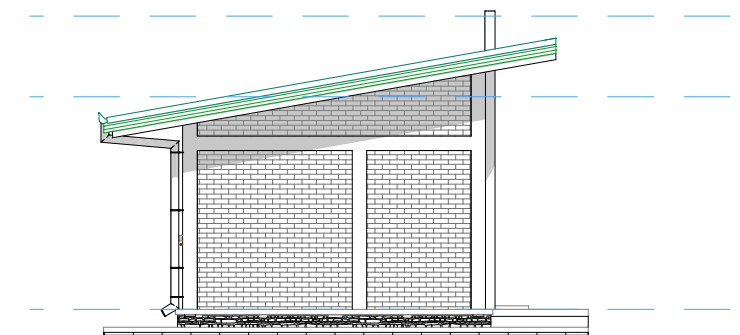
Façade postérieure



Façade latérale droite



Façade principale



Façade latérale gauche