

## CLIENT

REGIONAL COMMISSIONER'S OFFICE - KIGOMA  
P.O.BOX 125, KIGOMA  
EMAIL: ras@kigoma.go.tz

## PROJECT

WEZESHA BINTI PROJECT  
CONSTRUCTION OF DORMITORIES AND SWASH AT KIGOMA  
REGION

## ELECTRICAL DRAWINGS

## CONSULTANT



PEAKEY INTERNATIONAL  
CONSULTING ENGINEERING  
COMPANY LTD,  
P. O. BOX 41802, DAR ES SALAAM.  
Phone: +255 78 777 7072, +255 71 942 6043  
Email: peakeyinternational@gmail.com




## DONOR



BELGIAN DEVELOPMENT AGENCY,  
14/15 MASAKI, HAILE SELASSIE ROAD,  
OASIS OFFICE PARK 4TH FLOOR.  
P.O.BOX 23209 – DAR ES SALAM  
T +255 22 266 7724 |  
EMAIL: tanzania@enabel.be

# LIST OF ELECTRICAL DRAWINGS

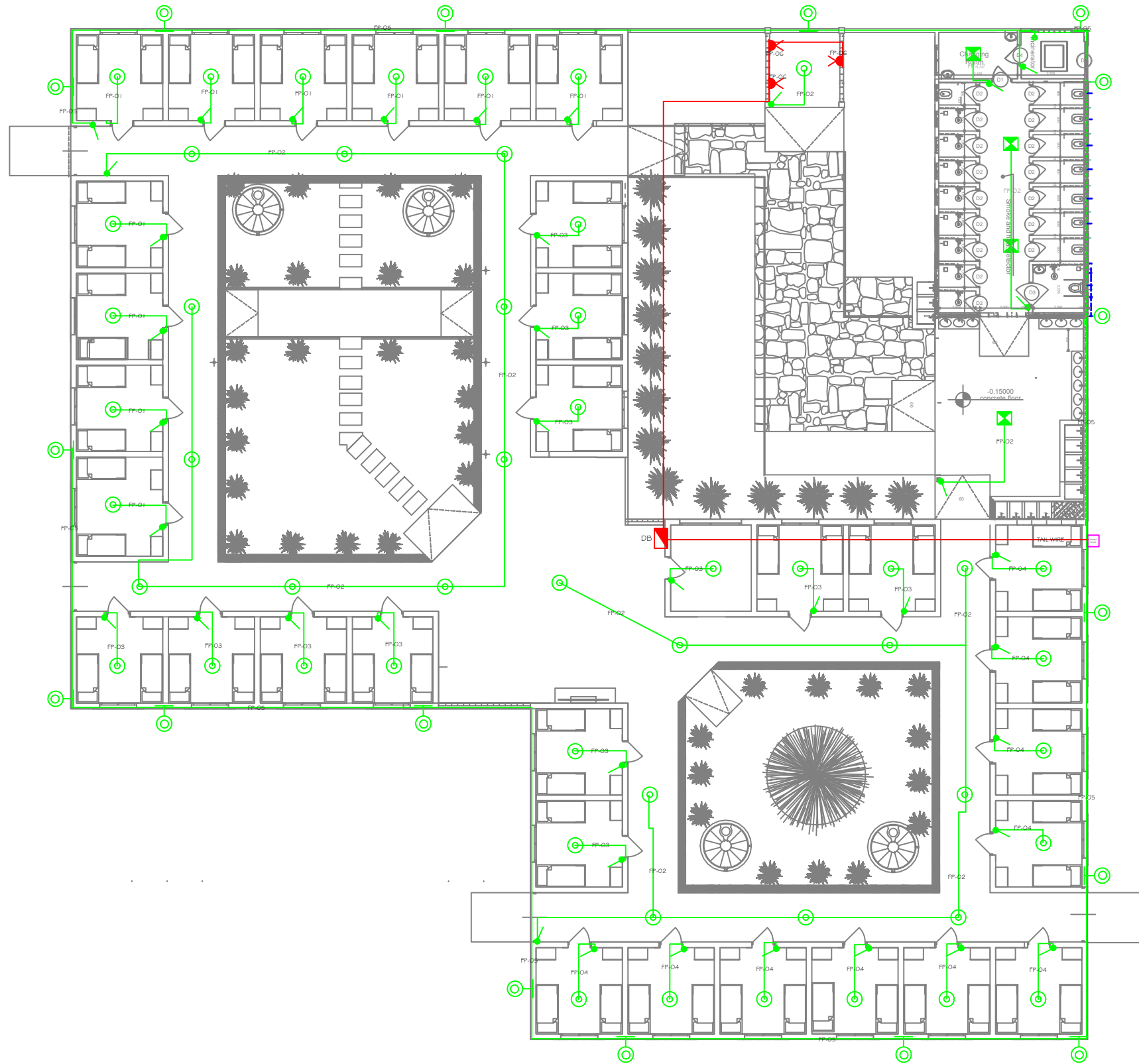
| S/No. | DESCRIPTION                         | DRAWING No.       | DATE/REV. |
|-------|-------------------------------------|-------------------|-----------|
| 1.    | LIST OF ELECTRICAL DRAWINGS         | WEZESHA-120-EE-00 | MAY, 2026 |
| 2     | ELECTRICAL LEGEND AND GENERAL NOTES | WEZESHA-120-EE-01 | MAY, 2026 |
| 3     | LIGHTING AND POWER LAYOUT.          | WEZESHA-120-EE-02 | MAY, 2026 |
| 4     | FIRE DETECTION AND ALARM SYSTEM     | WEZESHA-120-EE-03 | MAY, 2026 |
| 5     | LIGHTNING PROTECTION SYSTEM         | WEZESHA-120-EE-04 | MAY, 2026 |
| 6     | DISTRIBUTION BOARD SCHEMATIC        | WEZESHA-120-EE-05 | MAY, 2026 |

|   |   |  |             |   |   |   |               |                             |
|---|---|--|-------------|---|---|---|---------------|-----------------------------|
| <br><b>WEZESHA BINTI PROJECT</b><br>CONSTRUCTION OF DORMITORIES<br>AND SWASH AT KIGOMA REGION |  | Kigoma MC  | Client      | REGIONAL COMMISSIONER'S OFFICE - KIGOMA     | CONSULTANT<br><br><br><b>PEAKEY INTERNATIONAL CONSULTING ENGINEERING</b><br><small>Consulting Excellence</small> | <b>GENERAL NOTES</b><br>1. All dimensions are in mm<br>2. Depth of foundation may change due to soil condition<br>3. Scale: NTS<br><b>GENERAL NOTES</b> | Drawing Title | List od Electrical Drawings |
|   |   | Kigoma DC  | Supervisor  | PEAKEY INTERNATIONAL CONSULTING ENGINEERING |   |   | Date          | May/2026                    |
|   |   | Kigoma TC  |             |   |   |   | Scale         | NTS                         |
|   |   | Kigoma DC  |             |   |   |   | Designed by   | H.M                         |
|   |   | Kigoma DC  |             |   |   |   | Checked by    | P.M                         |
| Kigoma DC   | Donor   | WEZESHA BINTI ENABEL Belgian Development Agency, P.O.Box 24 Kigoma, Tanzania | Approved by | RE-RAS OFFICE KIGOMA                        |   |   |               |                             |
|   |   |  |             |   | Drawing No.   | WEZESHA-120-EE-00   |               |                             |

# ELECTRICAL LEGEND AND GENERAL NOTES

|     | ELECTRICAL LEGEND   | MOUNTING HEIGHT(mm)            | GENERAL NOTES:  |
|-----|---|--------------------------------|---|
| 1.  | LIGHTING TYPE A: LED5 PANEL RC-EH SQUARE 595-40W-6000-GY-GP LED PANEL LAMP AS OPPLP TYPE OR APPROVED EQUIVALENT   | CEILING                        | <ol style="list-style-type: none"> <li>1. THE ELECTRICAL INSTALLATIONS SHALL COMPLY WITH IEE WIRING REGULATIONS 17<sup>th</sup> EDITION BS 7671:2017 WITH CURRENT AMMENDMENTS AND GOVERNMENT LAWS, BY LAWS AND REGULATIONS.</li> <li>2. THE INTERNAL INSTALLATIONS SHALL BE CARRIED OUT USING PVC INSULATED COPPER CABLES DRAWN INTO CONCEALED CONDUITS, CABLE TRAYS, TRUNKING AND DUCTS</li> <li>3. SOCKET OUTLET, TV OUTLETS AND TELEPHONE POINTS SHALL BE MOUNTED AT 300mm AFFL.</li> <li>4. ALL WIRING ACCESSORRIES SHALL BE MOUNTED ON PVC BOXES i.e STEEL BOXES ARE NOT ACCEPTABLE.</li> <li>5. DP SWITCHES AND LIGHTING SWITCHES SHALL BE MOUNTED AT 1400mm AFFL</li> <li>6. EACH AC SHALL HAVE A 20A DP SWITCH MOUNTED CLOSE TO THE INDOOR UNIT AT LEAST 1.4M ABOVE THE FLOOR LEVEL.</li> <li>7. THE NUMBER OF EARTH RODS TO BE DETERMINED BY SOILRESISTIVITY SUCH THAT CONSUMER EARTH ELECTRODE RESISTANCE SHALL NOT EXCEED 2 OHMS.</li> <li>8. DISTRIBUTION BOARDS/CONSUMER UNIT SHALL BE INSTALLED AT 2000mm AFFL.</li> <li>9. ALL MCB'S, SWITCH SOCKET OUTLETS, DP SWITCHES AND LIGHT SWITCHES SHALL BE CLEARLY MARKED TO INDICATE THE CIRCUIT NUMBERS AS SHOWN IN DRAWINGS</li> <li>10. ALL LIGHTING FITTINGS SHALL BE SUPPLIED COMPLETE WITH LAMPS OF CORRECT WATTAGE.</li> <li>11. THE SENSITIVITY OF THE RCD SHALL BE AS PER SPECIFICATIONS. ANY OTHER RATING OTHER THAN THOSE SPECIFIED SHALL NOT BE ACCEPTED.</li> <li>12. NO MORE THAN ONE SUB-CIRCUIT CABLES SHALL BE INSTALLED IN ONE CONDUIT</li> <li>13. SWICTHES OF DIFF2ERENT SUB CIRCUITS SHALL BE MOUNTED ON THEIR OWN BOXES EXCEPT FOR GRID SWITCHES</li> <li>14. ALL ELECTRICAL MATERIAL OTHER THAN THOSE SPECIFIED SHALL BE SUBJECTED TO APPROVAL PRIOR TO PURCHASE/INSTALLATION.</li> <li>15. THE CONNECTION LINES FOR RING CIRCUITS AND LIGHTING POINTS ARE FOR GUIDANCE ONLY. THE CONTRACTOR SHALL DETERMINE THE EXACT CONNECTION LINES TAKING INTO ACCOUNT THE TRUNKING/CONDUIT ROUTES ADAPTED</li> <li>16. ALL TV OUTLETS INTERLINKED WITH 25mm DIAMETER PVC CONDUIT ORIGINATING FROM A 32mm DIAMETER DOWN PIPE FROM ROOR SLAB.</li> </ol> |
| 2.  | LIGHTING TYPE B: LED5 DOWNLIGHT RC- H100-12W-5000-WT-GP SAP CODE 140048186 AS OPPLP TYPE OR APPROVED EQUIVALENT   | CEILING                        |   |
| 3.  | LIGHTING TYPE B: LED5 DOWNLIGHT RC- H100-12W-5700-WT-GP WITH EMERGENCY FUNCTION SAP CODE 140048185 AS OPPLP TYPE OR APPROVED EQUIVALENT                                   | CEILING                        |   |
| 4.  | LIGHTING TYPE C: LED5 DOWNLIGHT RC- ESII R100-12W-6000 WH NV SAP CODE 140053271 AS OPPLP TYPE OR APPROVED EQUIVALENT  | CEILING                        |   |
| 5.  | LIGHTING TYPE D: LED BULKHEAD-E-20W-4000-GPIP65 PROTECTED,WITH CODE 543022000710 AS AS OPPLP TYPE   | CEILING                        |   |
| 6.  | LIGHTING TYPE E: LED BULKHEAD-E-20W-4000-GPIP65 PROTECTED,WITH CODE 543022000710 AS AS OPPLP TYPE   | WALL                           |   |
| 7.  | LIGHTING TYPE H: LED WALL MOUNTED DOWNLIGHT DECORATIVE BULKHEAD FITTING WITH PRODUCT NO.HC 420 10W 3000K WARM WHITE BY OPPLP TYPE OR APPROVED EQUIVALENT                  | WALL                           |   |
| 8.  | 60W CEILING FAN, BLADE 56 INCH NATIONAL / PANASONIC   | CEILING                        |   |
| 9.  | CEILING FAN REGULATOR AND SWITCH  | 1200mm AFFL                    |   |
| 10. | LIGHT SWITCH, 1 GA ONE WAY,ONE GANG FLUSH .   | 1200mm AFFL/ BED SWITCH750mm   |   |
| 11. | LIGHT SWITCH, 1 GA ONE WAY, TWO GANG FLUSH  | 1200mm AFFL                    |   |
| 12. | LIGHT SWITCH, 1 GA TWO WAY, ONE/TWO GANG,FLUSH,MOULDED,PLASTIC  | 1200mm AFFL                    |   |
| 13. | AIR CONDITIONER SWITCH, 20A DP WITH NEON LAMP AND MARK 'AIR CONDITIONER', MEM LIST .  | 1200mm AFFL                    |   |
| 14. | 20A DP WITH NEON INDICATOR FOR WATER HEATER OR WATER PUMP   | 1200mm AFFL                    |   |
| 15. | SOCKET OUTLET, 13A TWIN, SWITCHED, FLUSH MOULDED PLASTIC.   | 300mm AFFL                     |   |
| 16. | SOCKET OUTLET, 13A TWIN, SWITCHED, FLUSH MOULDED PLASTIC, WATER PROOF.  | 1000mm AFFL                    |   |
| 17. | ELECTRICAL SUBMETER   | 1200mm AFFL                    |   |
| 18. | DB DISTRIBUTION BOARD AS SPECIFIED IN SCHEMATIC DRAWINGS  | 2000 OR AS DECIDED ON SITE     |   |
| 19. | MDB MAIN DISTRIBUTION BOARD AS SPECIFIED IN SCHEMATIC DRAWINGS  | WALL OR AS DECIDED ON SITE     |   |
| 20. | OUTDOOR CAMERA  | WALL 350mm BELOW CEILING LEVEL |   |
| 21. | PASSIVE INFRARED MOTION SENSOR WITH ULTRASONIC PRESENCE SENSING   | CEILING                        |   |
| 22. | CCTV MONITOR AND DVR  | WALL                           |   |
| 23. | TV OUTLET, SINGLE, FLUSH MOULDED PLASTIC.   | 350 AFFL                       |   |
| 24. | Magnetic Sensor for Windows and Doors   | DOOR OR WINDOW                 |   |
| 25. | LITHIUM BATTERY STANDALONE SMOKE DETECTOR   | CEILING                        |   |
| 26. | SECURITY ALARM PANEL/ CONTROLLER  | WALL                           |   |
| 27. | 1500W WATER HEATER. WATER PROOF TYPE AS TESI GCA 1515 L52 RC OR APPROVED EQUIVALENT   | UNDERWATER                     |   |
| 28. | LIGHTING TYPE J: 100W DECORATIVE LIGHT FOR LIVING ROOM AND DINING ROOM  | CEILING                        |   |
| 29. | LIGHTING TYPE G: EXTERIOR BOLLARD LIGHT POWDER COATED BLACK FINISH, POLYCARBONATE LENS 46W MAX E27 LAMP IP65 AS RADIANT , PHILIPS, THORN LUX TYPE OR APPROVED EQUIVALENT. | GROUND                         |   |
| 30. | PTZ OUTDOOR CAMERA  | GROUND                         |   |

|  |       |  |             |   |  |  |               |                                     |
|--|-------|--|-------------|---|--|--|---------------|-------------------------------------|
| <br><b>WEZESHA BINTI PROJECT</b><br>CONSTRUCTION OF DORMITORIES AND SWASH AT KIGOMA REGION |       | Kigoma MC  | Client      | REGIONAL COMMISSIONER'S OFFICE - KIGOMA     | CONSULTANT<br><br><br>PEAKY INTERNATIONAL CONSULTING ENGINEERING | GENERAL NOTES<br>1. All dimensions are in mm<br>2. Depth of foundation may change due to soil condition<br>3. Scale: NTS | Drawing Title | Electrical legeng and general notes |
|  |       | Kigoma DC  | Supervisor  | PEAKEY INTERNATIONAL CONSULTING ENGINEERING |  |  | Date          | May/2026                            |
|  |       | Kigoma TC  |             |   |  |  | Scale         | NTS                                 |
|  |       | Kigoma DC  |             |   |  |  | Designed by   | H.M                                 |
|  |       | Kigoma DC  |             |   |  |  | Checked by    | P.M                                 |
| Kigoma DC  | Donor | WEZESHA BINTI ENABEL Belgian Development Agency, P.O.Box 24 Kigoma, Tanzania | Approved by | RE-RAS OFFICE KIGOMA                        | Drawing No.  | WEZESHA-120-EE-01  |               |                                     |



**Enabel**  
 WEZESHA BINTI PROJECT  
 CONSTRUCTION OF DORMITORIES  
 AND SWASH AT KIGOMA REGION



|           |            |  |
|-----------|------------|--|
| Kigoma MC | Client     | REGIONAL COMMISSIONER'S OFFICE - KIGOMA                                      |
| Kigoma DC |            |  |
| Kigoma TC | Supervisor | PEAKEY INTERNATIONAL CONSULTING ENGINEERING                                  |
| Kigoma DC |            |  |
| Kigoma DC | Donor      | WEZESHA BINTI ENABEL Belgian Development Agency, P.O.Box 24 Kigoma, Tanzania |
| Kigoma DC |            |  |

CONSULTANT

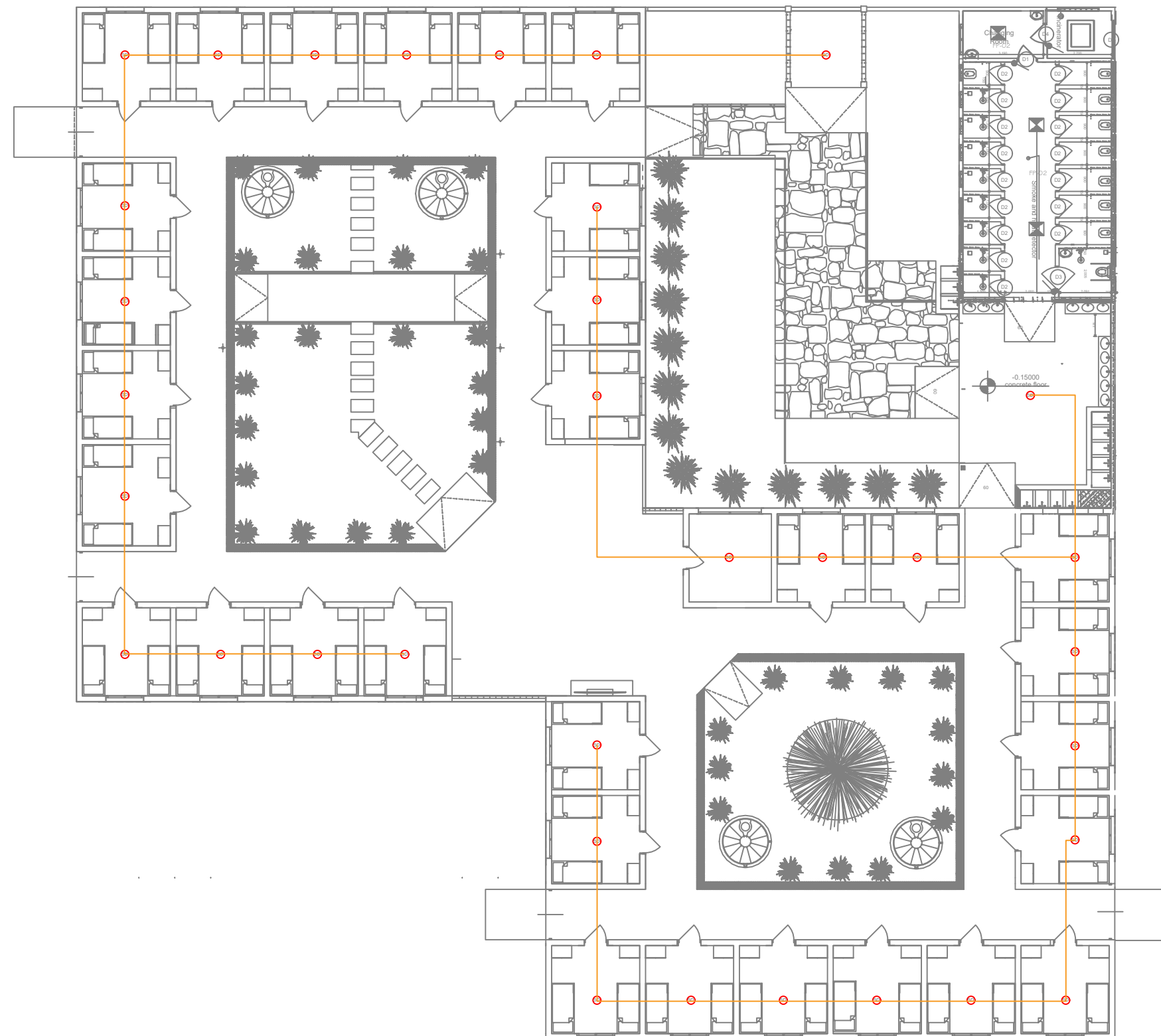
PEAKEY INTERNATIONAL CONSULTING ENGINEERING  
 Consulting Excellence

**GENERAL NOTES**

1. All dimensions are in mm
2. Depth of foundation may change due to soil condition
3. Scale: NTS

**GENERAL NOTES**

|               |                           |
|---------------|---------------------------|
| Drawing Title | Lighting and power layout |
| Date          | May/2026                  |
| Scale         | NTS                       |
| Designed by   | H.M                       |
| Checked by    | P.M                       |
| Approved by   | RE-RAS OFFICE KIGOMA      |
| Drawing No.   | WEZESHA-120-EE-02         |



**Enabel**  
 WEZESHA BINTI PROJECT  
 CONSTRUCTION OF DORMITORIES  
 AND SWASH AT KIGOMA REGION



Kigoma MC  
 Kigoma DC  
 Kigoma TC  
 Kigoma DC  
 Kigoma DC

|            |  |
|------------|--|
| Client     | REGIONAL COMMISSIONER'S OFFICE - KIGOMA                                      |
| Supervisor | PEAKEY INTERNATIONAL CONSULTING ENGINEERING                                  |
| Donor      | WEZESHA BINTI ENABEL Belgian Development Agency, P.O.Box 24 Kigoma, Tanzania |

CONSULTANT

PEAKEY INTERNATIONAL CONSULTING ENGINEERING  
 Consulting Excellence

GENERAL NOTES

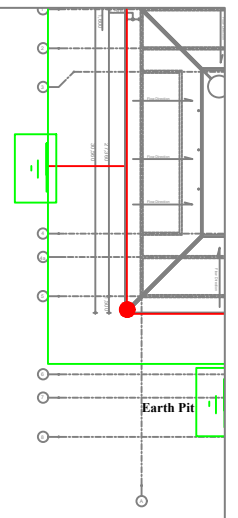
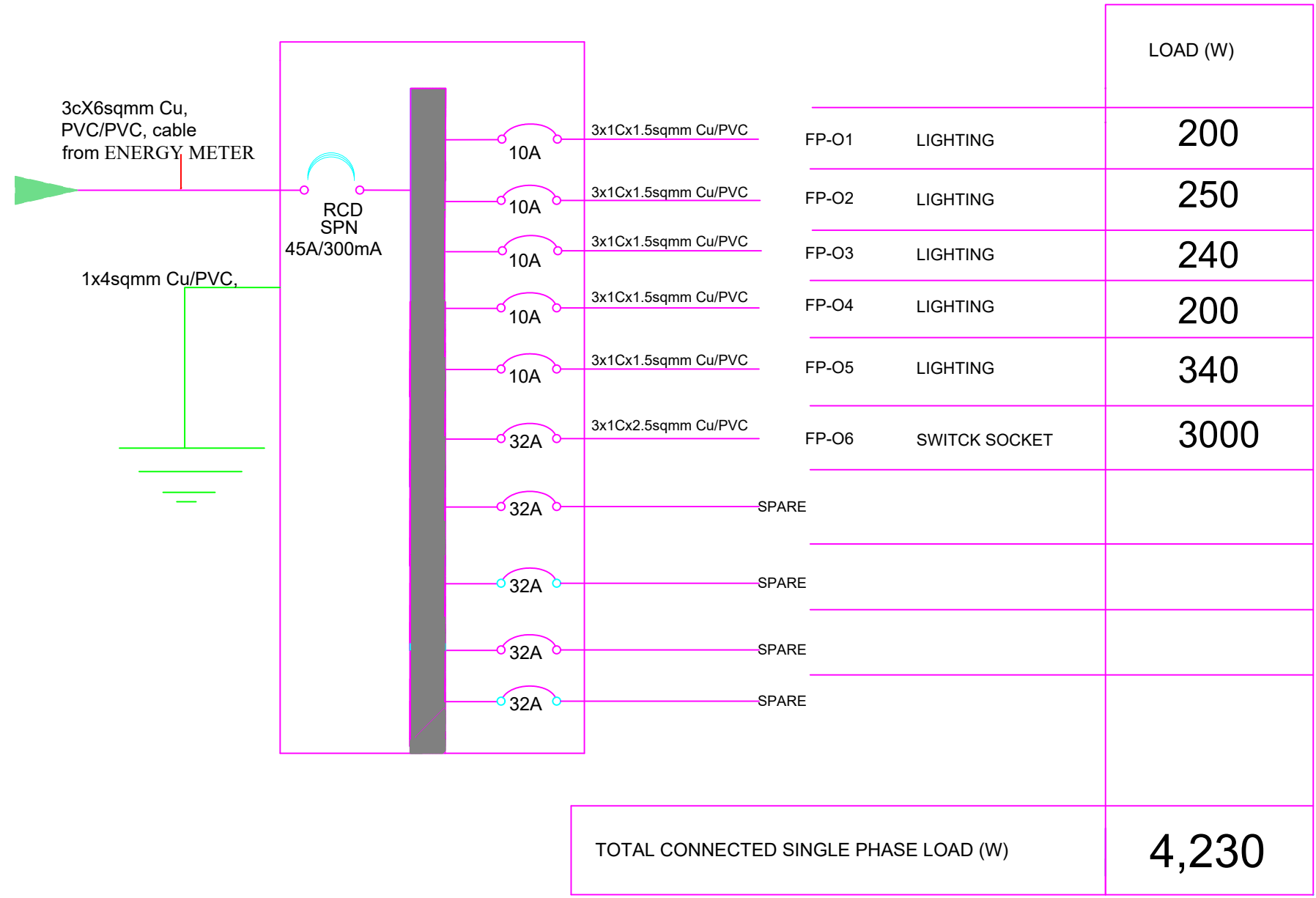
1. All dimensions are in mm
2. Depth of foundation may change due to soil condition
3. Scale: NTS

GENERAL NOTES

|               |                                 |
|---------------|---------------------------------|
| Drawing Title | Fire Detection and Alarm system |
| Date          | May/2026                        |
| Scale         | NTS                             |
| Designed by   | H.M                             |
| Checked by    | P.M                             |
| Approved by   | RE-RAS OFFICE KIGOMA            |
| Drawing No.   | WEZESHA-120-EE-03               |



# FLOOR PLAN DISTRIBUTION BOARD SCHEMATIC (DB-FP)



LIS

| S/No. | DESCRIPTION      |
|-------|------------------|
| 1.    | LIST OF ELECTRIC |
| 2.    | ELECTRICAL LEGE  |
| 3.    | LIGHTING AND PC  |
| 4.    | FIRE DETECTION A |
| 5.    | LIGHTNING PROTE  |
| 6.    | DISTRIBUTION BOA |

**SPECIFICATIONS :**

10-WAY SPN DISTRIBUTION BOARD, METALCLAD, FLUSH, WITH INTEGRAL 45A/300mA INCOMING RCD AND FINAL CIRCUIT MCB'S AS SHOWN COMPLETE WITH SPD, AS ABB OR APPROVED EQUIVALENT.

|  |             |                      |            |  |  |   |               |                              |
|--|-------------|----------------------|------------|--|--|---|---------------|------------------------------|
| <br><b>WEZESHA BINTI PROJECT</b><br>CONSTRUCTION OF DORMITORIES AND SWASH AT KIGOMA REGION |             | Kigoma MC            | Client     | REGIONAL COMMISSIONER'S OFFICE - KIGOMA                                      | CONSULTANT<br><br><br>PEAKY INTERNATIONAL CONSULTING ENGINEERING<br><small>Consulting Excellence</small> | GENERAL NOTES<br>1. All dimensions are in mm<br>2. Depth of foundation may change due to soil condition<br>3. Scale: NTS<br>GENERAL NOTES | Drawing Title | Distribution Board Schematic |
|  |             | Kigoma DC            | Supervisor | PEAKEY INTERNATIONAL CONSULTING ENGINEERING                                  |  |   | Date          | May/2026                     |
|  |             | Kigoma TC            |            |  |  |   | Scale         | NTS                          |
|  |             | Kigoma DC            |            |  |  |   | Designed by   | H.M                          |
|  |             | Kigoma DC            | Donor      | WEZESHA BINTI ENABEL Belgian Development Agency, P.O.Box 24 Kigoma, Tanzania |  |   | Checked by    | P.M                          |
| Kigoma DC  | Approved by | RE-RAS OFFICE KIGOMA |            |  |  |   |               |                              |
|  |             |                      |            |  |  |   | Drawing No.   | WEZESHA-120-EE-05            |