

**WEZESHA BINTI PROJECT:**  
**CONSTRUCTION OF DORMITORIES AND SWASH AT KIGOMA REGION.**

---

**A R C H I T E C T U R A L   D R A W I N G S**

**HOSTEL BUILDING**  
**CAPACITY FOR 120 STUDENTS**

---

**CLIENT :**



THE UNITED REPUBLIC OF TANZANIA  
PRESIDENT'S OFFICE REGIONAL  
ADMINISTRATION AND LOCAL GOVERNMENT  
KIGOMA REGION

P.O BOX 125  
ras@kigoma.go.tz

**DONOR:**



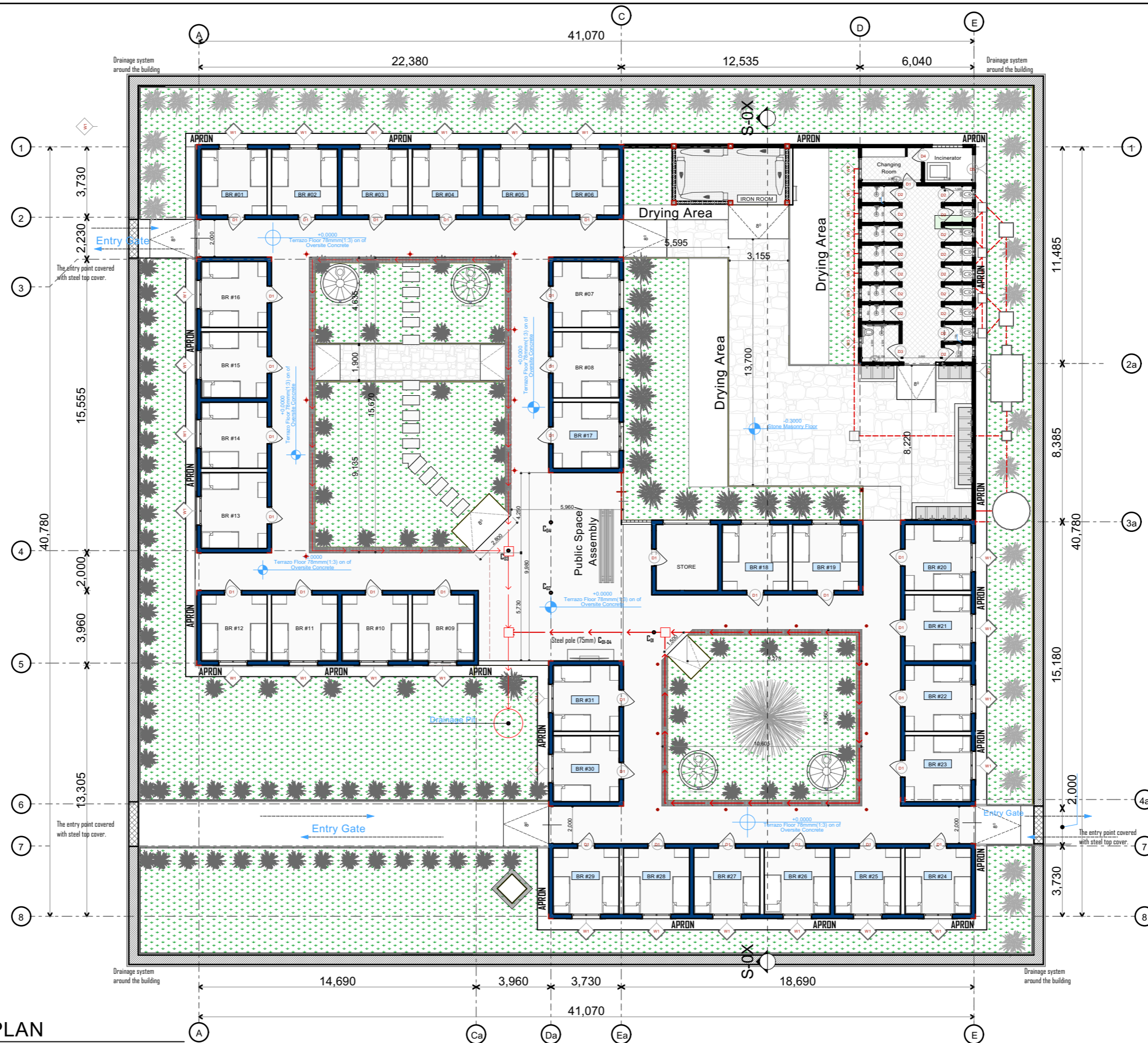
WEZESHA BINTI PROJECT - ENABEL  
BELGIAN DEVELOPMENT AGENCY  
P.O BOX 24 KIGOMA  
TANZANIA

**CONSULTANT :**



Peakey International Consulting  
Engineering Co. Ltd

PEAKEY INTERNATIONAL CONSULTING  
ENGINEERING  
Consulting Excellence



SITE LAYOUT PLAN

**Enabel**  
 WEZESHA BINTI PROJECT  
 CONSTRUCTION OF DORMITORIES  
 AND SWASH AT KIGOMA REGION



Kigoma MC	Client	REGIONAL COMMISSIONER'S OFFICE - KIGOMA
Kigoma DC		
Kasulu TC	Supervisor	PEAKEY INTERNATIONAL CONSULTING ENGINEERING
Kasulu DC		
Kibondo DC	Donor	WEZESHA BINTI ENABEL Belgian Development Agency P.O. Box 24 Kigoma, Tanzania

Consultant:

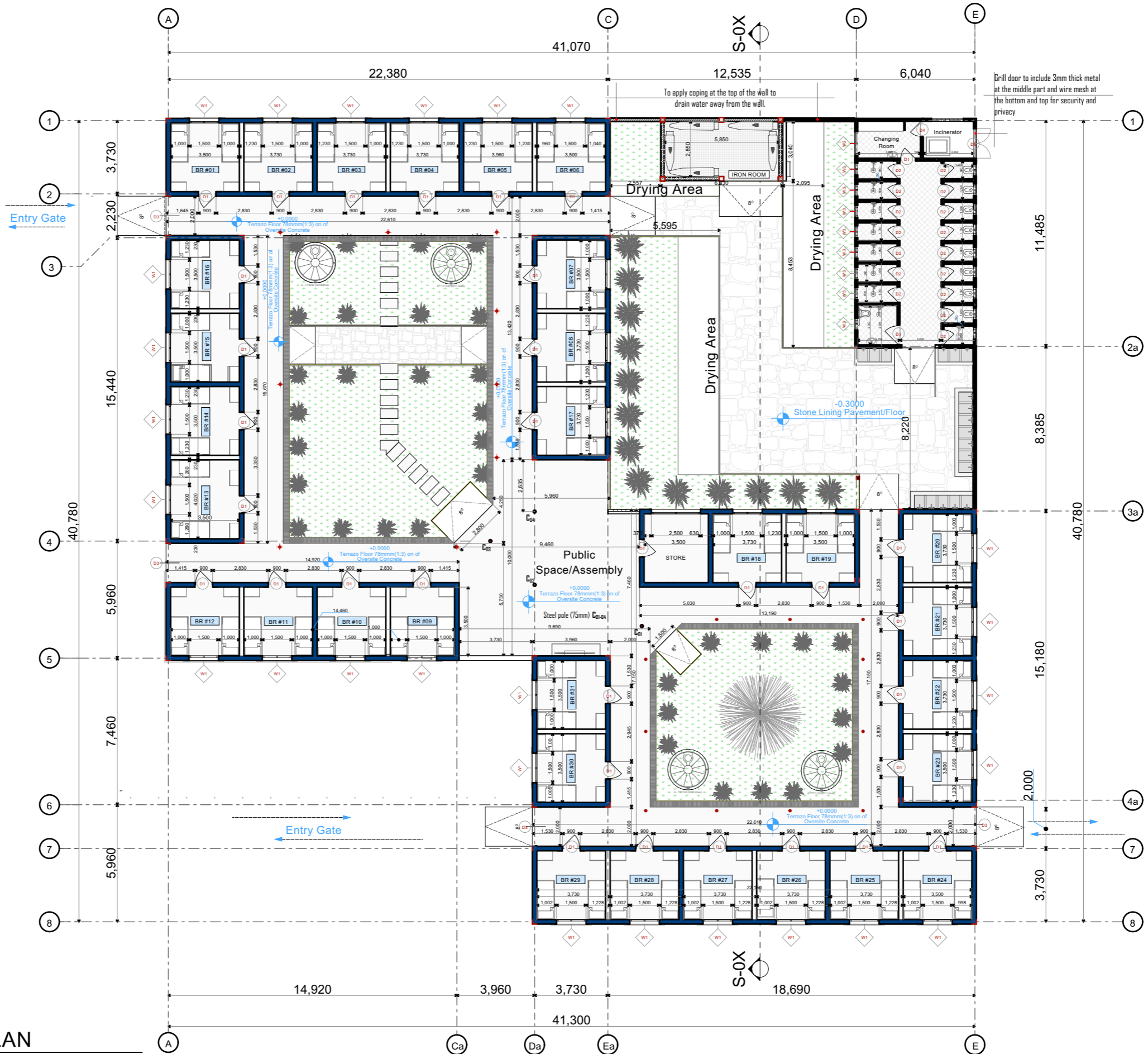
PEAKEY INTERNATIONAL CONSULTING ENGINEERING  
 Consulting Excellence

**GENERAL NOTES**

- All dimensions are in mm
- Depth of foundation may change due to subsoil condition
- Scale : Not to scale

**BUILDING TYPE 120 - Students Hostel Building**

Drawing Title	TANK RISER - DETAILS
Date	DECEMBER 2024
Scale	1:85
Design by	ENABEL
Checked by	PEAKEY INTERNATIONAL
Approved by	RE- RAS OFFICEKIGOMA



GROUND FLOOR PLAN

**Enabel**  
 WEZESHA BINTI PROJECT  
 CONSTRUCTION OF DORMITORIES  
 AND SWASH AT KIGOMA REGION



Kigoma MC	Client	REGIONAL COMMISSIONER'S OFFICE - KIGOMA
Kigoma DC		
Kasulu TC	Supervisor	PEAKEY INTERNATIONAL CONSULTING ENGINEERING
Kasulu DC		
Kibondo DC	Donor	WEZESHA BINTI ENABEL Belgian Development Agency P.O. Box 24 Kigoma, Tanzania

Consultant:

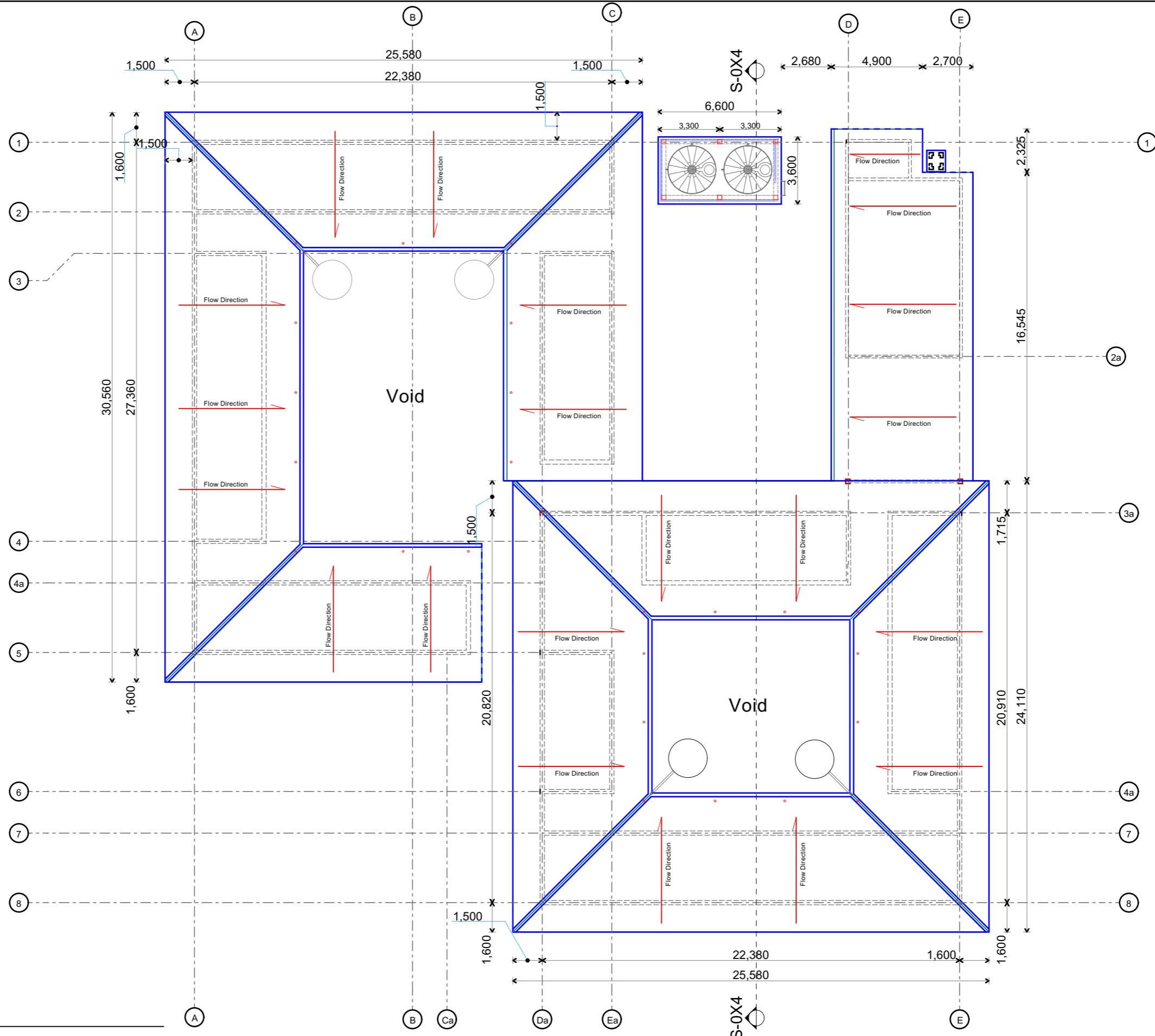
PEAKEY INTERNATIONAL CONSULTING  
ENGINEERING  
Consulting Excellence

**GENERAL NOTES**

- All dimensions are in mm
- Depth of foundation may change due to subsoil condition
- Scale : Not to scale

**BUILDING TYPE 120 - Students Hostel Building**

Drawing Title	TANK RISER - DETAILS
Date	DECEMBER 2024
Scale	1:85
Design by	ENABEL
Checked by	PEAKEY INTERNATIONAL
Approved by	RE- RAS OFFICEKIGOMA



ROOF LAYOUT

**Enabel**  
 WEZESHA BINTI PROJECT  
 CONSTRUCTION OF DORMITORIES  
 AND SWASH AT KIGOMA REGION



Kigoma MC	Client	REGIONAL COMMISSIONER'S OFFICE - KIGOMA
Kigoma DC		
Kasulu TC	Supervisor	PEAKEY INTERNATIONAL CONSULTING ENGINEERING
Kasulu DC		
Kibondo DC	Donor	WEZESHA BINTI ENABEL Belgian Development Agency P.O. Box 24 Kigoma, Tanzania

Consultant:

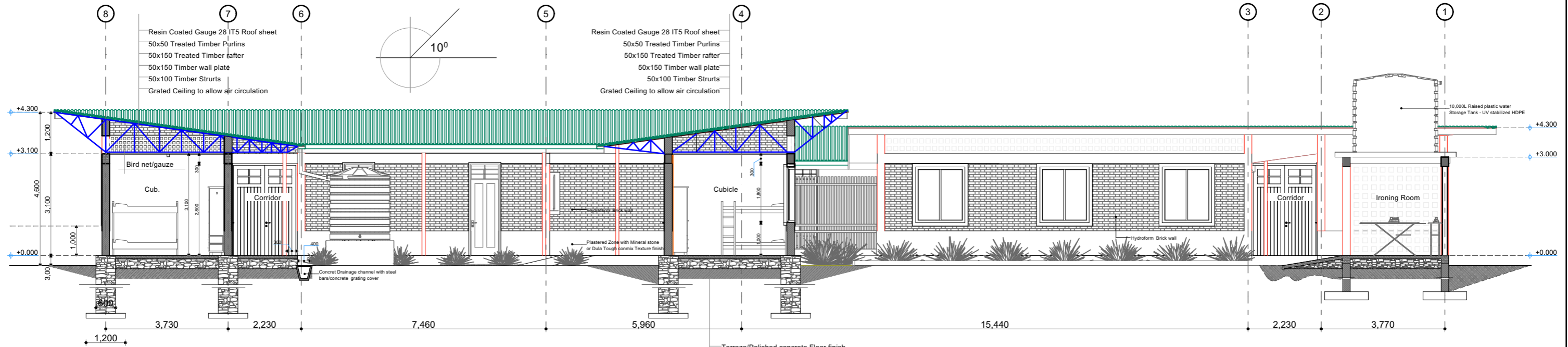
PEAKEY INTERNATIONAL CONSULTING ENGINEERING  
 Consulting Excellence

**GENERAL NOTES**

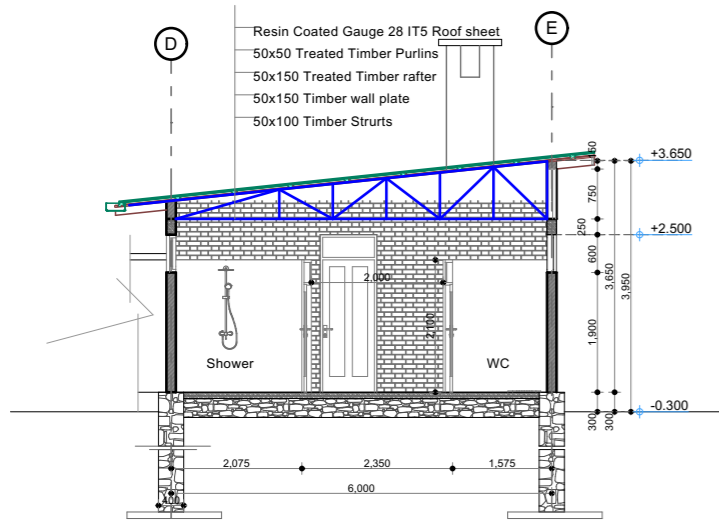
- All dimensions are in mm
- Depth of foundation may change due to subsoil condition
- Scale : Not to scale

**BUILDING TYPE 120 - Students Hostel Building**

Drawing Title	TANK RISER - DETAILS
Date	DECEMBER 2024
Scale	1:85
Design by	ENABEL
Checked by	PEAKEY INTERNATIONAL
Approved by	RE- RAS OFFICEKIGOMA



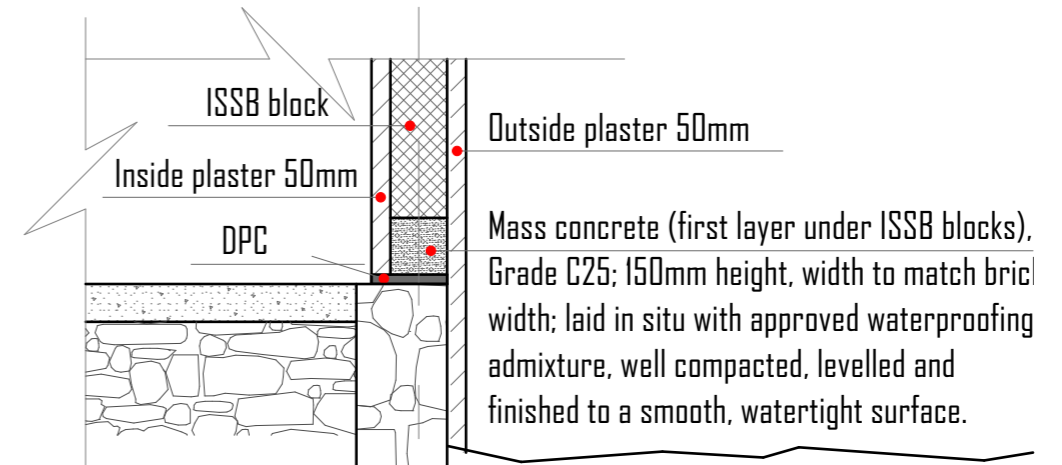
Terrazzo/Polished concrete Floor finish  
100mm Mass concrete  
DPM - Layer  
300mm - Well compacted Hardcore  
Well compacted backfills



DOOR SCHEDULE			
No.	TYPE	SIZE	LOCATION
01	D2	800/2100	WC & SHOWER
02	D1	800/2800	CUBICLES & STORE
03	D3	2000/2800	MAIN ENTRANCE
04	D4	900/2500	CHANGING ROOM & INCINERATOR
05	D5	1000/2100	DISABLED ROOM
06	D6	2000/2800	OPENING - NET AREAS
TOTAL 6			

WINDOW SCHEDULE			
No.	TYPE	SIZE	LOCATION
01	W1	1500/1800	CUBICLES & STORE
02	W2	800/800	TOILET & SHOWER
03	W3	1200/800	CHANGING ROOM & SHOWER
TOTAL 3			

NB: Aluminium windows: 6mm glass thickness, 8mm thick profile.



**SECTION DETAILS**

**Enabel**

WEZESHA BINTI PROJECT

CONSTRUCTION OF DORMITORIES AND SWASH AT KIGOMA REGION

Kigoma MC	Client	REGIONAL COMMISSIONER'S OFFICE - KIGOMA
Kigoma DC		
Kasulu TC	Supervisor	PEAKEY INTERNATIONAL CONSULTING ENGINEERING
Kasulu DC		
Kibondo DC	Donor	WEZESHA BINTI ENABEL Belgian Development Agency P.O. Box 24 Kigoma, Tanzania

Consultant:

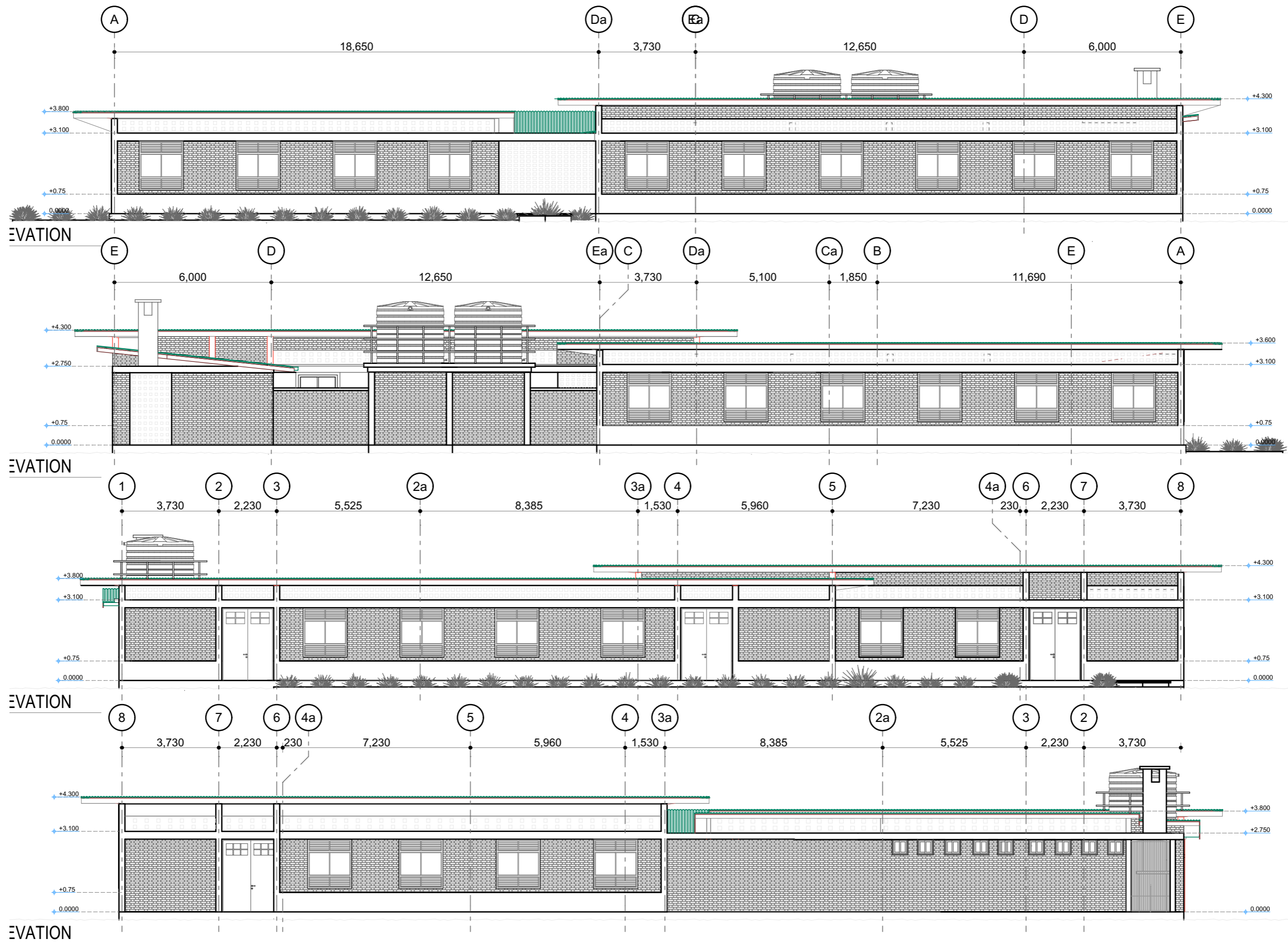

PEAKEY INTERNATIONAL CONSULTING ENGINEERING  
Consulting Excellence

**GENERAL NOTES**


- All dimensions are in mm
- Depth of foundation may change due to subsoil condition
- Scale: Not to scale

**BUILDING TYPE 120 - Students Hostel Building**

Drawing Title	TANK RISER - DETAILS
Date	DECEMBER 2024
Scale	1:85
Design by	ENABEL
Checked by	PEAKEY INTERNATIONAL
Approved by	RE- RAS OFFICEKIGOMA

**WEZESHA BINTI PROJECT**  
CONSTRUCTION OF DORMITORIES AND SWASH AT KIGOMA REGION



Kigoma MC	Client	REGIONAL COMMISSIONER'S OFFICE - KIGOMA
Kigoma DC		
Kasulu TC	Supervisor	PEAKEY INTERNATIONAL CONSULTING ENGINEERING
Kasulu DC		
Kibondo DC	Donor	WEZESHA BINTI ENABEL Belgian Development Agency P.O. Box 24 Kigoma, Tanzania

Consultant:



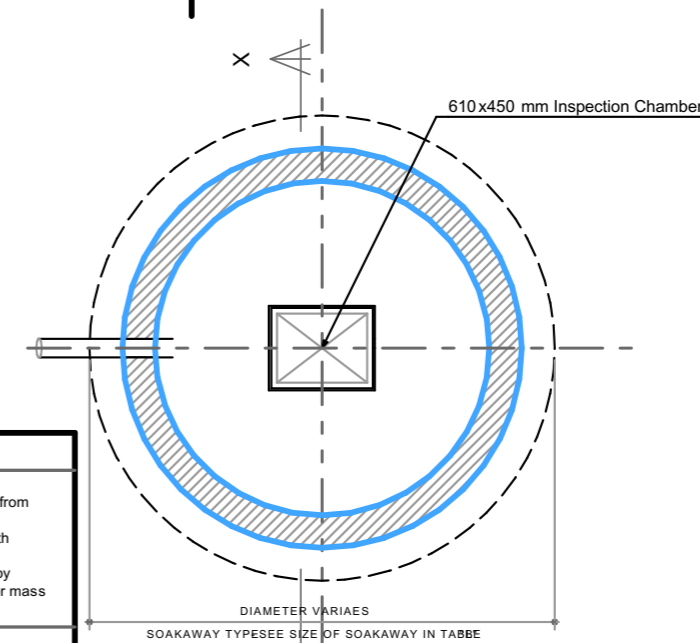
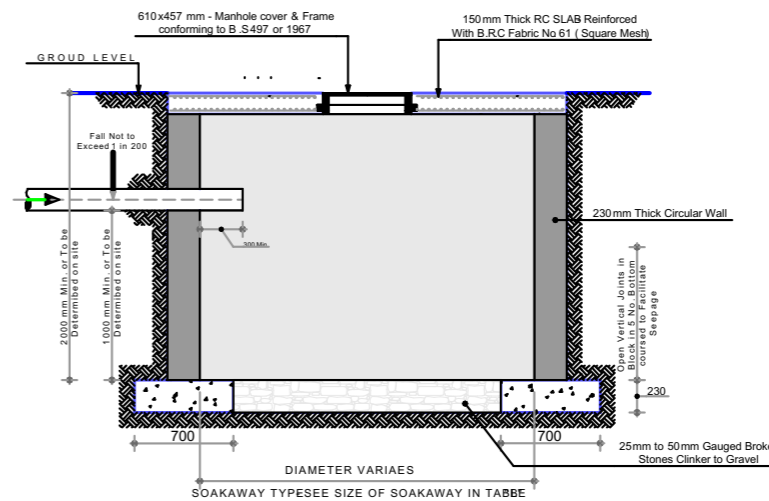
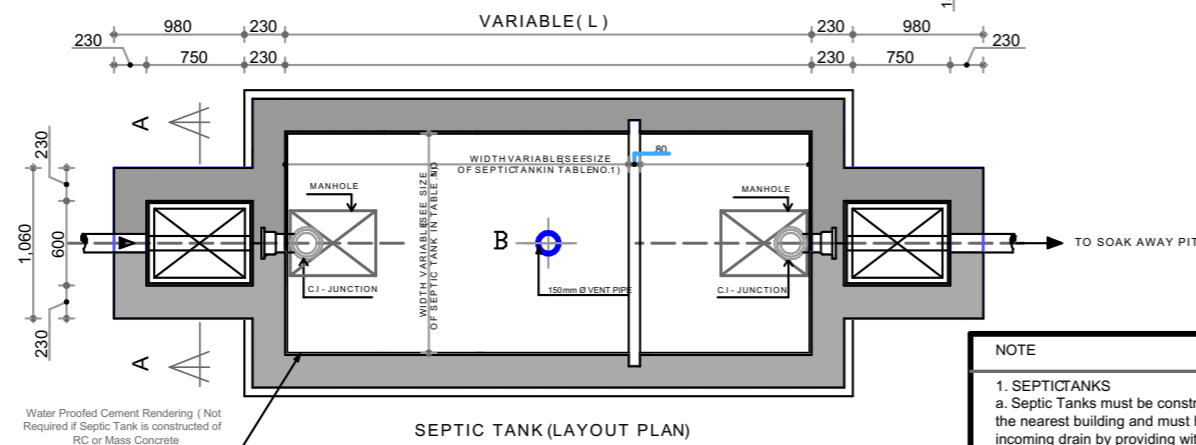
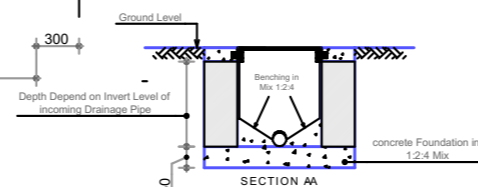
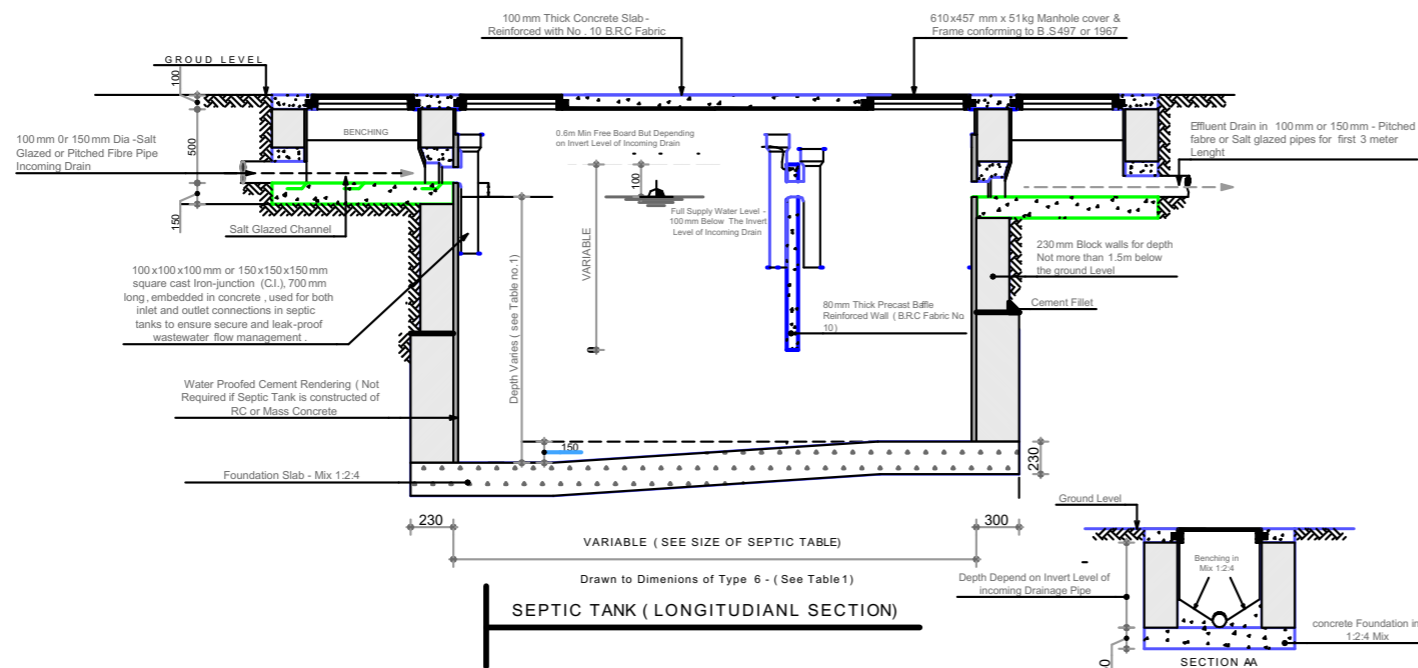
**PEAKEY INTERNATIONAL CONSULTING ENGINEERING**  
Consulting Excellence

**GENERAL NOTES**

- All dimensions are in mm
- Depth of foundation may change due to subsoil condition
- Scale : Not to scale

**BUILDING TYPE 120 - Students Hostel Building**

Drawing Title	TANK RISER - DETAILS
Date	DECEMBER 2024
Scale	1:85
Design by	ENABEL
Checked by	PEAKEY INTERNATIONAL
Approved by	RE- RAS OFFICEKIGOMA



**NOTE**

1. SEPTICTANKS  
 a. Septic Tanks must be constructed not less than 6m from the nearest building and must be vented back through incoming drain by providing with stack dully fitted with mosquito proofed screens  
 b. Septic Must be constructed proofed (Water Tight) by adding "PUBLO" or some other water proofing agent or mass concrete and rendering

2. SOAKAWAY PIT  
 a. PERCOLATION FACTOR  
 Is the time (In min) taken by clear water to seep in a certain soil in a depth of one centimeter  
 To ascertain a percolation factor  
 1.) Dig a hole about 30x30cm size to the required depth of trench  
 2.) Keep the wall filled with clear water for four hours so as to saturate the surrounding soil  
 3.) Pour in clear water to fill the hole to a depth about 20cm  
 4.) Note the time taken by the water to soakaway  
 5.) To calculate the percolation factor, Divide the time period in (Min) by the depth of water in (cm)

3. GENERAL NOTE  
 a. All dimensions are in mm except where mentioned otherwise  
 b. All house hold and solid wastes are to be taken to septic tanks where connections to main sewers have been planned normally the soil wastes only are taken by the septic tanks except in the case as above while all other household wastes are dealt with separately and disposed of directly into soakage pit

4. CONCRETE WORKS  
 a. For all reinforced concrete works the mixing shall be 1:2:4 by volume  
 b. For all mass concrete the mixing shall be 1:3:6 by volume except mass concrete in septic tank where it shall be 1:2:4 by volume

5. PERCOLATION FACTORS  
 Values less than 1.5 use sizes of soakage trenches, soakage pits and soakaways are given for percolations factors equal to greater than 1.5

type	all wastes no. of users	no. of soil wastes users	dimension (m)			volume m <sup>3</sup>	capacity litres
			L	W	D		
1		10	2.00	1.00	1.30	2.60	2.00
2	7	20	2.20	1.00	1.50	3.30	3.30
3	15	30	2.50	1.20	1.70	5.10	5.100
4	30	45	3.00	1.30	1.80	7.02	7.020
5	40	60	3.40	1.50	1.80	9.18	9.180
6	50	75	3.70	1.60	1.80	10.66	10.66
7	60	90	4.20	1.70	1.80	12.85	12.85
8	75	105	4.50	1.80	2.00	16.20	16.200
9	85	120	4.80	1.80	2.00	17.28	17.280

type	all wastes no. of users	soil wastes no. of users	diameter of soakaway (metres)							
			percolation factors							
			15	3.5	6.5	10	13	20		
1		10								
2	7	20	2.80	3.10	3.50	3.80	4.00	4.80		
3	15	30								
4	30	45	3.10	3.70	4.30	4.80	5.30	5.70		
5	40	60								
6	50	75	3.40	4.10	4.70	5.30	6.00	6.30		
7	60	90								
8	75	105	3.70	4.40	5.10	5.70	6.30	6.70		
9	85	120								

Kigoma MC	Client	REGIONAL COMMISSIONER'S OFFICE - KIGOMA	
Kigoma DC			
Kasulu TC	Supervisor	PEAKEY INTERNATIONAL CONSULTING ENGINEERING	
Kasulu DC			
Kibondo DC	Donor	WEZESHA BINTI ENABEL Belgian Development Agency P.O. Box 24 Kigoma, Tanzania	

Consultant:




**GENERAL NOTES**

- All dimensions are in mm
- Depth of foundation may change due to subsoil condition
- Scale: Not to scale




**BUILDING TYPE 120 - Students Hostel Building**

Drawing Title	TANK RISER - DETAILS
Date	DECEMBER 2024
Scale	1:85
Design by	ENABEL
Checked by	PEAKEY INTERNATIONAL
Approved by	RE- RAS OFFICE KIGOMA



 <b>WEZESHA BINTI PROJECT</b> CONSTRUCTION OF DORMITORIES AND SWASH AT KIGOMA REGION		Kigoma MC	Client	REGIONAL COMMISSIONER'S OFFICE - KIGOMA	Consultant:  <b>PEAKEY INTERNATIONAL CONSULTING ENGINEERING</b> <small>Consulting Excellence</small>	<b>GENERAL NOTES</b> 1. All dimensions are in mm 2. Depth of foundation may change due to subsoil condition 3. Scale : Not to scale <b>BUILDING TYPE 120 - Students Hostel Building</b>	Drawing Title	TANK RISER - DETAILS
		Kigoma DC					Date	DECEMBER 2024
		Kasulu TC	Supervisor	PEAKEY INTERNATIONAL CONSULTING ENGINEERING			Scale	1:85
		Kasulu DC					Design by	ENABEL
		Kibondo DC	Donor	WEZESHA BINTI ENABEL Belgian Development Agency P.O. Box 24 Kigoma, Tanzania			Checked by	PEAKEY INTERNATIONAL
							Approved by	RE- RAS OFFICEKIGOMA



 <b>WEZESHA BINTI PROJECT</b> CONSTRUCTION OF DORMITORIES AND SWASH AT KIGOMA REGION		Kigoma MC	Client	REGIONAL COMMISSIONER'S OFFICE - KIGOMA	Consultant:  <b>PEAKEY INTERNATIONAL CONSULTING ENGINEERING</b> <small>Consulting Excellence</small>	<b>GENERAL NOTES</b> 1. All dimensions are in mm 2. Depth of foundation may change due to subsoil condition 3. Scale : Not to scale <b>BUILDING TYPE 120 - Students Hostel Building</b>	Drawing Title	TANK RISER - DETAILS
		Kigoma DC					Date	DECEMBER 2024
		Kasulu TC	Supervisor	PEAKEY INTERNATIONAL CONSULTING ENGINEERING			Scale	1:85
		Kasulu DC					Design by	ENABEL
		Kibondo DC	Donor	WEZESHA BINTI ENABEL Belgian Development Agency P.O. Box 24 Kigoma, Tanzania			Checked by	PEAKEY INTERNATIONAL
							Approved by	RE- RAS OFFICEKIGOMA



**Enabel**  
 WEZESHA BINTI PROJECT  
 CONSTRUCTION OF DORMITORIES  
 AND SWASH AT KIGOMA REGION



Kigoma MC	Client	REGIONAL COMMISSIONER'S OFFICE - KIGOMA
Kigoma DC		
Kasulu TC	Supervisor	PEAKEY INTERNATIONAL CONSULTING ENGINEERING
Kasulu DC		
Kibondo DC	Donor	WEZESHA BINTI ENABEL Belgian Development Agency P.O. Box 24 Kigoma, Tanzania

Consultant:

PEAKEY INTERNATIONAL CONSULTING  
ENGINEERING  
Consulting Excellence

<b>GENERAL NOTES</b>
1. All dimensions are in mm
2. Depth of foundation may change due to subsoil condition
3. Scale : Not to scale
<b>BUILDING TYPE 120 - Students Hostel Building</b>

Drawing Title	TANK RISER - DETAILS
Date	DECEMBER 2024
Scale	1:85
Design by	ENABEL
Checked by	PEAKEY INTERNATIONAL
Approved by	RE- RAS OFFICEKIGOMA



**Enabel**  
 WEZESHA BINTI PROJECT  
 CONSTRUCTION OF DORMITORIES  
 AND SWASH AT KIGOMA REGION



Kigoma MC	Client	REGIONAL COMMISSIONER'S OFFICE - KIGOMA
Kigoma DC		
Kasulu TC	Supervisor	PEAKEY INTERNATIONAL CONSULTING ENGINEERING
Kasulu DC		
Kibondo DC	Donor	WEZESHA BINTI ENABEL Belgian Development Agency P.O. Box 24 Kigoma, Tanzania

Consultant:

PEAKEY INTERNATIONAL CONSULTING  
ENGINEERING  
Consulting Excellence

<b>GENERAL NOTES</b>
1. All dimensions are in mm
2. Depth of foundation may change due to subsoil condition
3. Scale : Not to scale
<b>BUILDING TYPE 120 - Students Hostel Building</b>

Drawing Title	TANK RISER - DETAILS
Date	DECEMBER 2024
Scale	1:85
Design by	ENABEL
Checked by	PEAKEY INTERNATIONAL
Approved by	RE- RAS OFFICEKIGOMA



**Enabel**  
 WEZESHA BINTI PROJECT  
 CONSTRUCTION OF DORMITORIES  
 AND SWASH AT KIGOMA REGION



Kigoma MC	Client	REGIONAL COMMISSIONER'S OFFICE - KIGOMA
Kigoma DC		
Kasulu TC	Supervisor	PEAKEY INTERNATIONAL CONSULTING ENGINEERING
Kasulu DC		
Kibondo DC	Donor	WEZESHA BINTI ENABEL Belgian Development Agency P.O. Box 24 Kigoma, Tanzania

Consultant:

PEAKEY INTERNATIONAL CONSULTING  
ENGINEERING  
Consulting Excellence

<b>GENERAL NOTES</b>
1. All dimensions are in mm
2. Depth of foundation may change due to subsoil condition
3. Scale : Not to scale
<b>BUILDING TYPE 120 - Students Hostel Building</b>

Drawing Title	TANK RISER - DETAILS
Date	DECEMBER 2024
Scale	1:85
Design by	ENABEL
Checked by	PEAKEY INTERNATIONAL
Approved by	RE- RAS OFFICEKIGOMA



**Enabel**  
 WEZESHA BINTI PROJECT  
 CONSTRUCTION OF DORMITORIES  
 AND SWASH AT KIGOMA REGION



Kigoma MC	Client	REGIONAL COMMISSIONER'S OFFICE - KIGOMA
Kigoma DC		
Kasulu TC	Supervisor	PEAKEY INTERNATIONAL CONSULTING ENGINEERING
Kasulu DC		
Kibondo DC	Donor	WEZESHA BINTI ENABEL Belgian Development Agency P.O. Box 24 Kigoma, Tanzania

Consultant:

PEAKEY INTERNATIONAL CONSULTING  
ENGINEERING  
Consulting Excellence

<b>GENERAL NOTES</b>
1. All dimensions are in mm
2. Depth of foundation may change due to subsoil condition
3. Scale : Not to scale
<b>BUILDING TYPE 120 - Students Hostel Building</b>

Drawing Title	TANK RISER - DETAILS
Date	DECEMBER 2024
Scale	1:85
Design by	ENABEL
Checked by	PEAKEY INTERNATIONAL
Approved by	RE- RAS OFFICEKIGOMA



**Enabel**  
 WEZESHA BINTI PROJECT  
 CONSTRUCTION OF DORMITORIES  
 AND SWASH AT KIGOMA REGION



Kigoma MC	Client	REGIONAL COMMISSIONER'S OFFICE - KIGOMA
Kigoma DC		
Kasulu TC	Supervisor	PEAKEY INTERNATIONAL CONSULTING ENGINEERING
Kasulu DC		
Kibondo DC	Donor	WEZESHA BINTI ENABEL Belgian Development Agency P.O. Box 24 Kigoma, Tanzania

Consultant:

PEAKEY INTERNATIONAL CONSULTING  
ENGINEERING  
Consulting Excellence

<b>GENERAL NOTES</b>
1. All dimensions are in mm
2. Depth of foundation may change due to subsoil condition
3. Scale : Not to scale
<b>BUILDING TYPE 120 - Students Hostel Building</b>

Drawing Title	TANK RISER - DETAILS
Date	DECEMBER 2024
Scale	1:85
Design by	ENABEL
Checked by	PEAKEY INTERNATIONAL
Approved by	RE- RAS OFFICEKIGOMA



**Enabel**  
 WEZESHA BINTI PROJECT  
 CONSTRUCTION OF DORMITORIES  
 AND SWASH AT KIGOMA REGION



Kigoma MC	Client	REGIONAL COMMISSIONER'S OFFICE - KIGOMA
Kigoma DC		
Kasulu TC	Supervisor	PEAKEY INTERNATIONAL CONSULTING ENGINEERING
Kasulu DC		
Kibondo DC	Donor	WEZESHA BINTI ENABEL Belgian Development Agency P.O. Box 24 Kigoma, Tanzania




Consultant:

PEAKEY INTERNATIONAL CONSULTING  
ENGINEERING  
Consulting Excellence

<b>GENERAL NOTES</b>
1. All dimensions are in mm
2. Depth of foundation may change due to subsoil condition
3. Scale : Not to scale
<b>BUILDING TYPE 120 - Students Hostel Building</b>

Drawing Title	TANK RISER - DETAILS
Date	DECEMBER 2024
Scale	1:85
Design by	ENABEL
Checked by	PEAKEY INTERNATIONAL
Approved by	RE- RAS OFFICEKIGOMA



 <p><b>WEZESHA BINTI PROJECT</b> CONSTRUCTION OF DORMITORIES AND SWASH AT KIGOMA REGION</p>		Kigoma MC	Client	REGIONAL COMMISSIONER'S OFFICE - KIGOMA	 <p>PEAKEY INTERNATIONAL CONSULTING ENGINEERING Consulting Excellence</p>	<b>GENERAL NOTES</b> 1. All dimensions are in mm 2. Depth of foundation may change due to subsoil condition 3. Scale : Not to scale <b>BUILDING TYPE 120 - Students Hostel Building</b>	Drawing Title	TANK RISER - DETAILS
		Kigoma DC	Supervisor	PEAKEY INTERNATIONAL CONSULTING ENGINEERING			Date	DECEMBER 2024
		Kasulu TC					Scale	1:85
		Kasulu DC					Design by	ENABEL
		Kibondo DC					Donor	WEZESHA BINTI ENABEL Belgian Development Agency P.O. Box 24 Kigoma, Tanzania
				Approved by	RE- RAS OFFICEKIGOMA			



**Enabel**  
 WEZESHA BINTI PROJECT  
 CONSTRUCTION OF DORMITORIES  
 AND SWASH AT KIGOMA REGION



Kigoma MC	Client	REGIONAL COMMISSIONER'S OFFICE - KIGOMA
Kigoma DC		
Kasulu TC	Supervisor	PEAKEY INTERNATIONAL CONSULTING ENGINEERING
Kasulu DC		
Kibondo DC	Donor	WEZESHA BINTI ENABEL Belgian Development Agency P.O. Box 24 Kigoma, Tanzania




Consultant:

PEAKEY INTERNATIONAL CONSULTING  
ENGINEERING  
Consulting Excellence




<b>GENERAL NOTES</b>
1. All dimensions are in mm
2. Depth of foundation may change due to subsoil condition
3. Scale : Not to scale
<b>BUILDING TYPE 120 - Students Hostel Building</b>

Drawing Title	TANK RISER - DETAILS
Date	DECEMBER 2024
Scale	1:85
Design by	ENABEL
Checked by	PEAKEY INTERNATIONAL
Approved by	RE- RAS OFFICEKIGOMA



 <b>WEZESHA BINTI PROJECT</b> CONSTRUCTION OF DORMITORIES AND SWASH AT KIGOMA REGION		Kigoma MC	Client	REGIONAL COMMISSIONER'S OFFICE - KIGOMA	Consultant:  <b>PEAKEY INTERNATIONAL CONSULTING ENGINEERING</b> <small>Consulting Excellence</small>	<b>GENERAL NOTES</b> 1. All dimensions are in mm 2. Depth of foundation may change due to subsoil condition 3. Scale : Not to scale <b>BUILDING TYPE 120 - Students Hostel Building</b>	Drawing Title	TANK RISER - DETAILS
		Kigoma DC	Supervisor	PEAKEY INTERNATIONAL CONSULTING ENGINEERING			Date	DECEMBER 2024
		Kasulu TC					Scale	1:85
		Kasulu DC					Design by	ENABEL
		Kibondo DC					Donor	WEZESHA BINTI ENABEL Belgian Development Agency P.O. Box 24 Kigoma, Tanzania
			Approved by	RE- RAS OFFICEKIGOMA				



 <b>WEZESHA BINTI PROJECT</b> CONSTRUCTION OF DORMITORIES AND SWASH AT KIGOMA REGION		Kigoma MC	Client	REGIONAL COMMISSIONER'S OFFICE - KIGOMA	 PEAKEY INTERNATIONAL CONSULTING ENGINEERING <small>Consulting Excellence</small>	<b>GENERAL NOTES</b> 1. All dimensions are in mm 2. Depth of foundation may change due to subsoil condition 3. Scale : Not to scale <b>BUILDING TYPE 120 - Students Hostel Building</b>	Drawing Title	TANK RISER - DETAILS
		Kigoma DC					Date	DECEMBER 2024
		Kasulu TC	Supervisor	PEAKEY INTERNATIONAL CONSULTING ENGINEERING			Scale	1:85
		Kasulu DC					Design by	ENABEL
		Kibondo DC	Donor	WEZESHA BINTI ENABEL Belgian Development Agency P.O. Box 24 Kigoma, Tanzania			Checked by	PEAKEY INTERNATIONAL
			Approved by	RE- RAS OFFICEKIGOMA				



**Enabel**  
 WEZESHA BINTI PROJECT  
 CONSTRUCTION OF DORMITORIES  
 AND SWASH AT KIGOMA REGION



Kigoma MC	Client	REGIONAL COMMISSIONER'S OFFICE - KIGOMA
Kigoma DC		
Kasulu TC	Supervisor	PEAKEY INTERNATIONAL CONSULTING ENGINEERING
Kasulu DC		
Kibondo DC	Donor	WEZESHA BINTI ENABEL Belgian Development Agency P.O. Box 24 Kigoma, Tanzania

Consultant :



**GENERAL NOTES**

1. All dimensions are in mm
2. Depth of foundation may change due to subsoil condition
3. Scale : Not to scale

**BUILDING TYPE 120 - Students Hostel Building**

Drawing Title	TANK RISER - DETAILS
Date	DECEMBER 2024
Scale	1:85
Design by	ENABEL
Checked by	PEAKEY INTERNATIONAL
Approved by	RE- RAS OFFICEKIGOMA



**Enabel**  
 WEZESHA BINTI PROJECT  
 CONSTRUCTION OF DORMITORIES  
 AND SWASH AT KIGOMA REGION



Kigoma MC	Client	REGIONAL COMMISSIONER'S OFFICE - KIGOMA
Kigoma DC		
Kasulu TC	Supervisor	PEAKEY INTERNATIONAL CONSULTING ENGINEERING
Kasulu DC		
Kibondo DC	Donor	WEZESHA BINTI ENABEL Belgian Development Agency P.O. Box 24 Kigoma, Tanzania

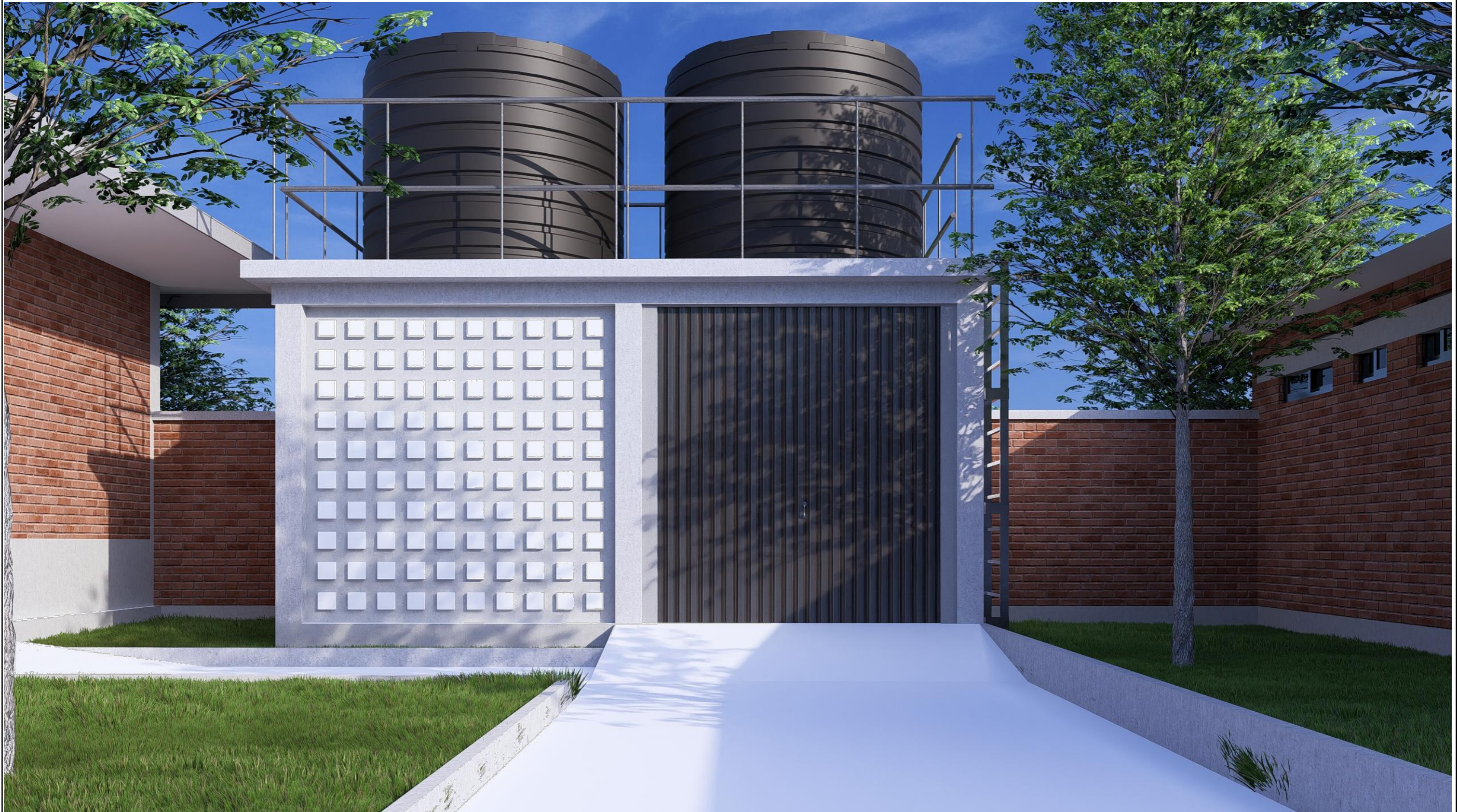
Consultant:



PEAKEY INTERNATIONAL CONSULTING  
ENGINEERING  
Consulting Excellence

<b>GENERAL NOTES</b>
1. All dimensions are in mm
2. Depth of foundation may change due to subsoil condition
3. Scale : Not to scale
<b>BUILDING TYPE 120 - Students Hostel Building</b>

Drawing Title	TANK RISER - DETAILS
Date	DECEMBER 2024
Scale	1:85
Design by	ENABEL
Checked by	PEAKEY INTERNATIONAL
Approved by	RE- RAS OFFICEKIGOMA



**Enabel**  
 WEZESHA BINTI PROJECT  
 CONSTRUCTION OF DORMITORIES  
 AND SWASH AT KIGOMA REGION



Kigoma MC	Client	REGIONAL COMMISSIONER'S OFFICE - KIGOMA
Kigoma DC		
Kasulu TC	Supervisor	PEAKEY INTERNATIONAL CONSULTING ENGINEERING
Kasulu DC		
Kibondo DC	Donor	WEZESHA BINTI ENABEL Belgian Development Agency P.O. Box 24 Kigoma, Tanzania

Consultant:

PEAKEY INTERNATIONAL CONSULTING  
ENGINEERING  
Consulting Excellence

<b>GENERAL NOTES</b>
1. All dimensions are in mm
2. Depth of foundation may change due to subsoil condition
3. Scale : Not to scale
<b>BUILDING TYPE 120 - Students Hostel Building</b>

Drawing Title	TANK RISER - DETAILS
Date	DECEMBER 2024
Scale	1:85
Design by	ENABEL
Checked by	PEAKEY INTERNATIONAL
Approved by	RE- RAS OFFICEKIGOMA